

**August 2019
KLOB(FM) Channel 234A
Thousand Palms, CA
Allocation Study**

This application proposes to relocate FM station KLOB from one tower to another, at the Edom Hill communications site.

The attached spacing study shows that the proposed operation meets the co-channel and adjacent channel spacing requirements for Class A stations as prescribed in §73.207 of the Commission's Rules, with the exception of a short-spacing to the licensed operation of KTWV on Channel 234B at Los Angeles. Processing pursuant to §73.215 of the Commission's Rules is requested with respect to KTWV, and the attached allocation study map is included to demonstrate the lack of prohibited contour overlap with that facility. This will be accomplished through use of a directional antenna on KLOB.

Hatfield & Dawson Consulting Engineers

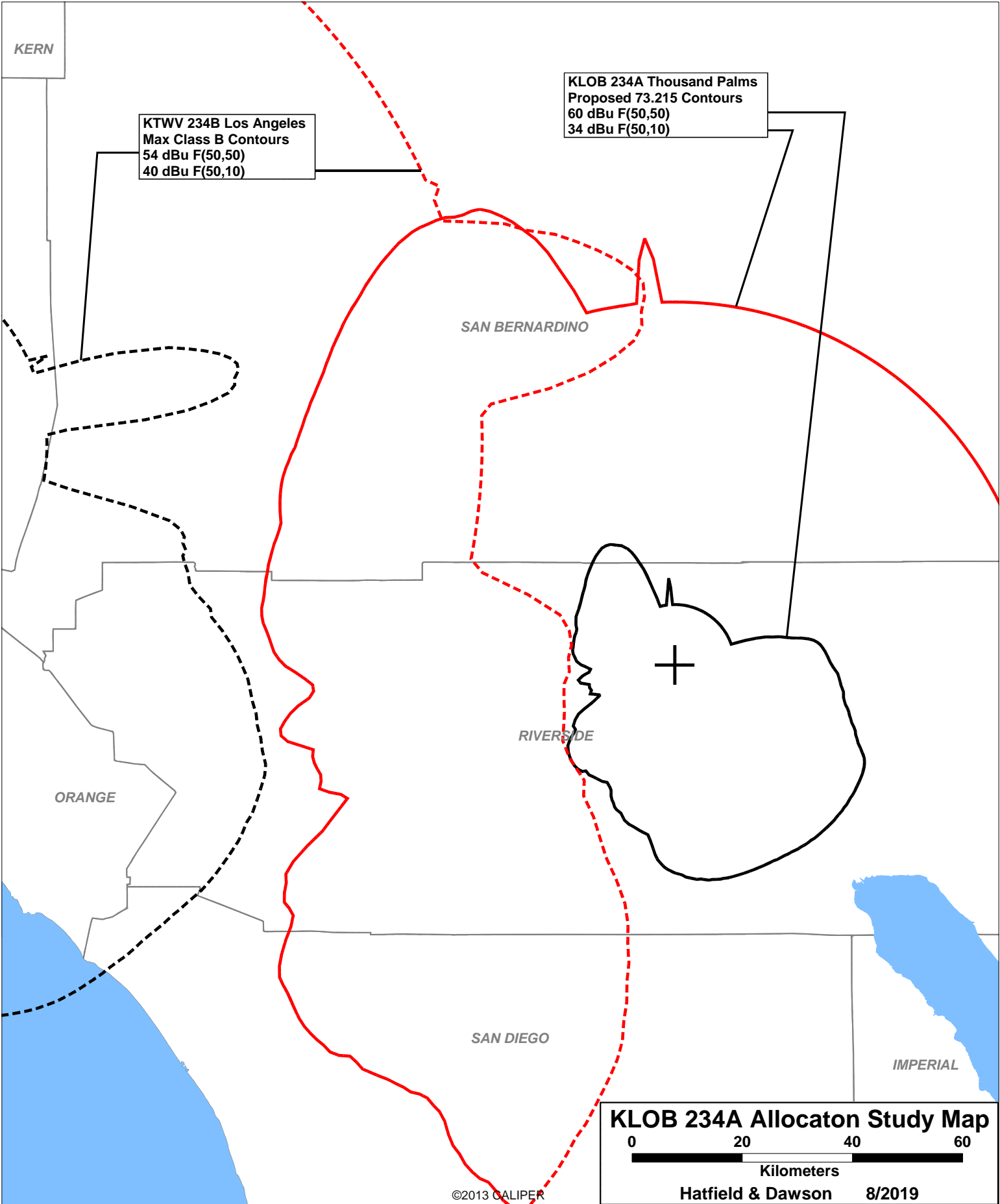
```

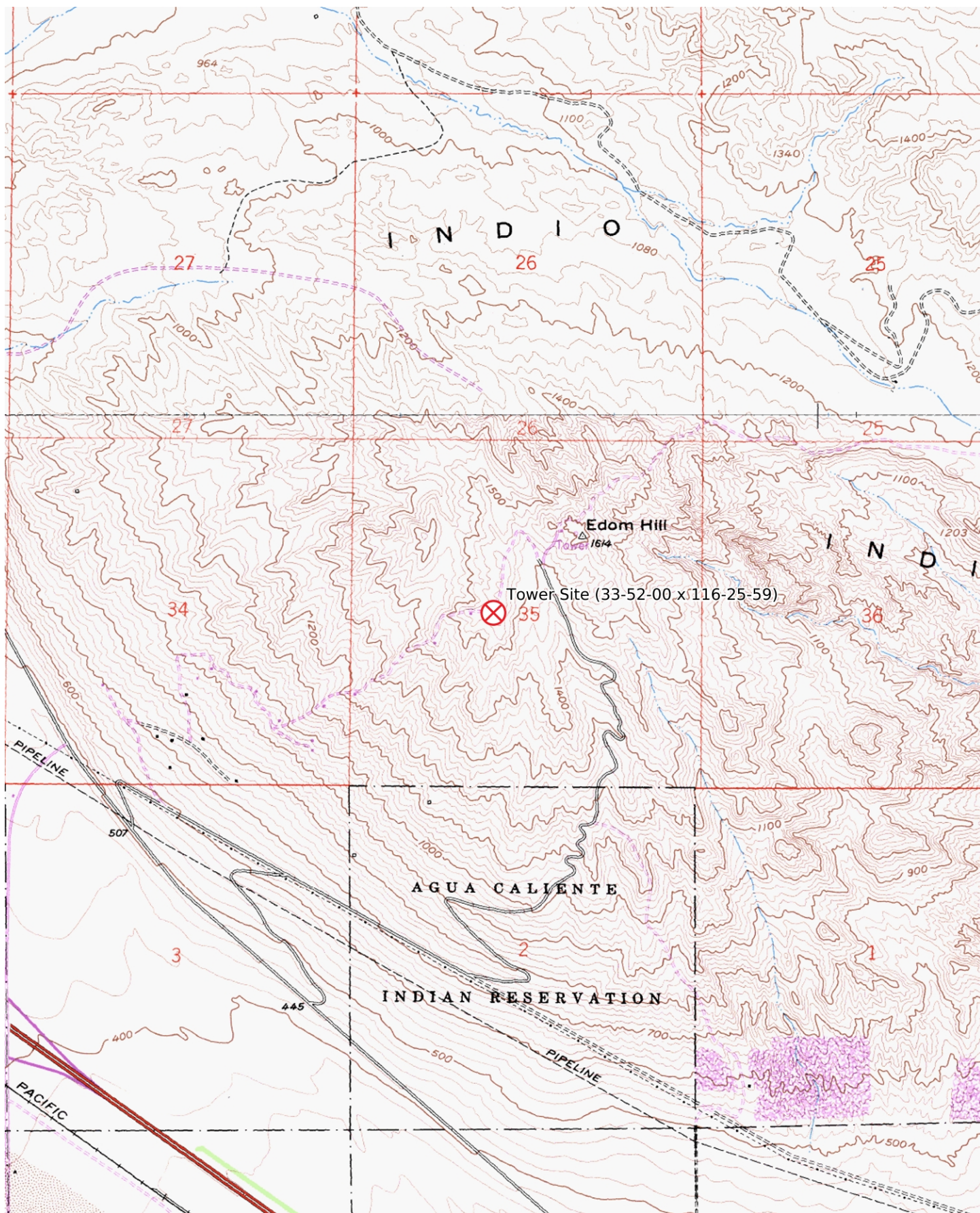
=====
SEARCH PARAMETERS                               FM Database Date: 190730
Channel: 234A      94.7 MHz                      Page 1
Latitude: 33 52 0
Longitude: 116 25 59
Safety Zone: 32 km
Job Title: KLOB 234A AT KMIR-TV

```

Call Status	City St	FCC File No.	Channel Freq.	ERP(kW) HAAT(m)	Latitude Longitude	Bearing deg-True	Dist (km)	Req (km)
KSVB-LP LIC	BIG BEAR CITY CA	BLL-70420AAK	231L1 94.1	0.100 27.0	34-14-44 116-51-42	317.0	57.72 0.00	0 LPFM
K232CX LIC	DESERT HOT SPRINGS CA	BLFT-91001AEE	232D 94.3	0.099 412.0	33-51-56 116-25-58	168.3	0.13 0.00	0 TRANS
KVBB-LP LIC	BIG BEAR LAKE CA	BLL-80426ABA	233L1 94.5	0.099 16.0	34-14-57 116-52-58	315.9	59.36 0.00	0 LPFM
KSEH LIC	BRAWLEY CA	BLH-20826AAQ	233B 94.5	50.000 92.0	32-54-40 115-31-40	141.4	135.37 22.37	113 CLEAR
KMYT LIC	TEMECULA CA	BMLH-40301ABM	233A 94.5	0.540 235.0	33-28-51 117-10-58	238.5	81.64 9.64	72 CLOSE
KFLG-FM LIC	BIG RIVER CA	BLH-80409ADN	234C0 94.7	19.500 834.0	34-33-06 114-11-37	69.1	219.93 4.93	215 CLOSE
KTWV LIC	LOS ANGELES CA	BMLH-21104ADN	234B 94.7	58.000 863.0	34-13-29 118-03-47	285.3	155.66 -22.34	178 SHORT
ABSOLUTE MINIMUM 73.215 SPACING = 143 KM								
KLOB LIC	THOUSAND PALMS CA	BLH-01020ABS	234A 94.7	1.650 195.0	33-51-56 116-25-58	168.3 SS	0.13 -114.87	115 SHORT
KBZT LIC	SAN DIEGO CA	BLH-10904AAE	235B 94.9	26.500 209.0	32-50-17 117-14-57	213.8	137.06 24.06	113 CLEAR
KWXZ-LP LIC	COACHELLA CA	BLL-70619AAO	236L1 95.1	0.050 -118.0	33-40-41 116-10-31	131.3	31.75 0.00	0 LPFM
KFRG LIC	SAN BERNARDINO CA	BMLH-40522ABS	236B 95.1	50.000 149.0	34-11-51 117-17-10	295.3	86.91 17.91	69 CLEAR
KAJI-LP LIC	PALM DESERT CA	BLL-70413AAN	237L1 95.3	0.050 -323.0	33-40-18 116-24-38	174.5	21.73 0.00	0 LPFM
K288DR LIC	DESERT HOT SPRINGS, CA	BMLFT-90127AEN	288D 105.5	0.010 396.0	33-51-56 116-26-04	226.1	0.18 0.00	0 TRANS

===== END OF FM SPACING STUDY FOR CHANNEL 234 =====





Mercator Projection
NAD27 Conus
USNG Zone 11SNT
CalTopo

