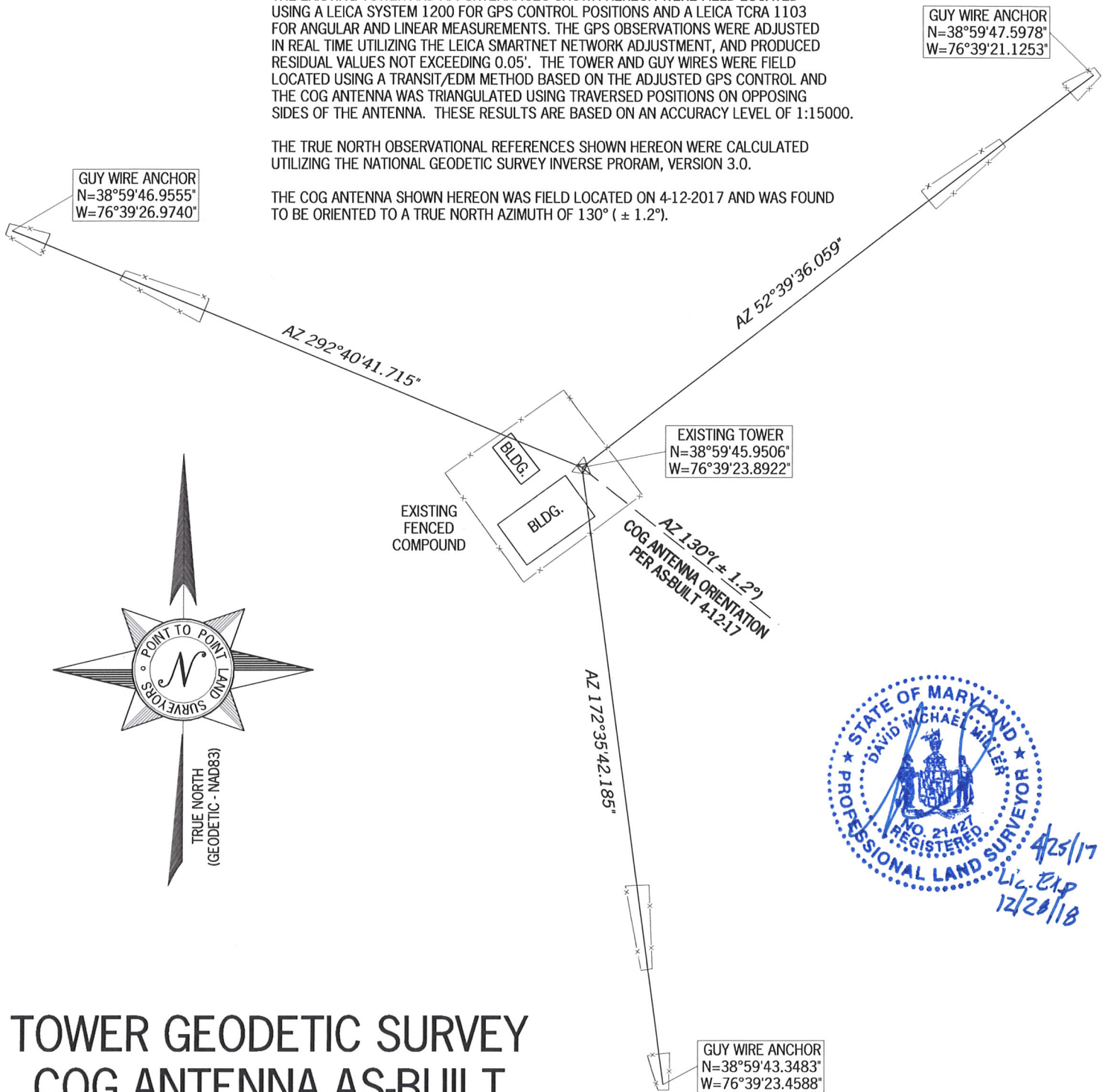


TOWER AS-BUILT CERTIFICATION

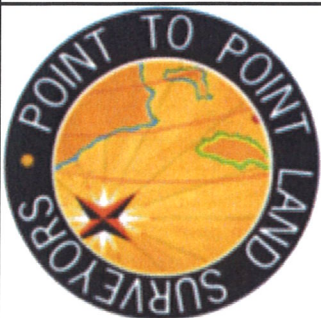
THE EXISTING TOWER AND APPURTENANCES SHOWN HEREON WERE FIELD LOCATED USING A LEICA SYSTEM 1200 FOR GPS CONTROL POSITIONS AND A LEICA TCRA 1103 FOR ANGULAR AND LINEAR MEASUREMENTS. THE GPS OBSERVATIONS WERE ADJUSTED IN REAL TIME UTILIZING THE LEICA SMARTNET NETWORK ADJUSTMENT, AND PRODUCED RESIDUAL VALUES NOT EXCEEDING 0.05". THE TOWER AND GUY WIRES WERE FIELD LOCATED USING A TRANSIT/EDM METHOD BASED ON THE ADJUSTED GPS CONTROL AND THE COG ANTENNA WAS TRIANGULATED USING TRAVERSED POSITIONS ON OPPOSING SIDES OF THE ANTENNA. THESE RESULTS ARE BASED ON AN ACCURACY LEVEL OF 1:15000.

THE TRUE NORTH OBSERVATIONAL REFERENCES SHOWN HEREON WERE CALCULATED UTILIZING THE NATIONAL GEODETIC SURVEY INVERSE PRORAM, VERSION 3.0.

THE COG ANTENNA SHOWN HEREON WAS FIELD LOCATED ON 4-12-2017 AND WAS FOUND TO BE ORIENTED TO A TRUE NORTH AZIMUTH OF 130° (± 1.2°).

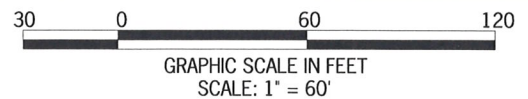


TOWER GEODETIC SURVEY COG ANTENNA AS-BUILT



POINT TO POINT LAND SURVEYORS

208 E. Ridgeville Blvd., Suite 204
Mount Airy, MD 21771
(p) 301-703-8319 (f) 301-703-8324
(w) pointtopointsurvey.com



CBS RADIO WASHINGTON DC
SITE ADDRESS: 1702 JUSTIN DR.
GAMBRILL, MD 21054
ANNE ARUNDEL COUNTY
MARYLAND

SCALE: 1" = 60'
CHECKED BY: CAD
DRAWN BY: DMM
DATE: 4-13-17
SHEET: 1 of 1
JOB #: MD17.0086