

W68AF CHANNEL 10 TRANSLATOR
DIGITAL FLASHCUT AND
DISPLACEMENT APPLICATION
TOCCOA, GEORGIA
(GEORGIA PUBLIC TELECOMMUNICATIONS COMMISSION)

KESSLER AND GEHMAN ASSOCIATES, INC.
TELECOMMUNICATIONS CONSULTING ENGINEERS

20060401

Prepared by William T. Godfrey, Jr.

KG&A

507 N.W. 60th Street, Suite C
Gainesville, Florida 32607

**ENGINEERING TECHNICAL STATEMENT PREPARED BY WILLIAM T. GODFREY, JR.
OF THE FIRM KESSLER AND GEHMAN ASSOCIATES, INC., TELECOMMUNICATIONS
CONSULTING ENGINEERS IN CONNECTION WITH A DISPLACEMENT / DIGITAL
CONVERSION APPLICATION FOR THE GEORGIA PUBLIC TELECOMMUNICATIONS
COMMISSION TELEVISION TRANSLATOR W68AF (BLTT-1916), TOCCOA, GEORGIA.**

The firm Kessler and Gehman Associates, Inc. has been retained by the Georgia Public Telecommunications Commission (GPTC), Atlanta, GA to prepare the engineering portion of a displacement/digital conversion application for the W68AF TV translator facility.

Background

The W68AF TV translator (TX) facility is licensed to operate on analog Channel 68 with an ERP of 0.867 kW using a nondirectional antenna (BLTT-1916) in the vicinity of Toccoa, GA. On January 26, 2006 the FCC released a Public Notice announcing a filing window for LPTV and TX digital companion channel applications beginning May 1, 2006. In response to the Public Notice, GPTC requested engineering services for its ten analog TV translators in preparation for the filing window.

Request for Displacement

Section 73.3572(a)(4)(ii) of the FCC rules states that a TV translator station authorized on a channel from channel 52 to 69 may at any time file a displacement relief application for a change in output channel and it will not be considered an application for a major change. GPTC is the licensee of the W68AF translator facility which is licensed to operate on out-of-core Channel 68. For this reason, GPTC hereby requests authorization to clear the lower 700 MHz band and displace to an in-core channel for the W68AF translator facility.

Request for Digital Conversion

The GPTC is in the process of awarding a government-funded contract to have its nine digital television broadcast facilities built. The contract includes tower upgrades, new transmitter buildings, transmitters, antennas, etc. Based on the budget for the Georgia digital conversion design-build project, there will not be sufficient funds available to build ten digital companion translators to operate simultaneously with GPTC's ten licensed analog translators. Therefore, in addition to its request for channel displacement, GPTC also respectfully requests authorization to convert the W68AF facility from analog to digital.

Accordingly, the purpose of this application is to obtain FCC authorization to convert the W68AF TX facility from analog to digital and displace channels from the licensed out-of-core analog Channel 68 to the proposed in-core digital Channel 10.

Interference Studies

Exhibit 11 depicts the output of a detailed Longley-Rice interference study that was calculated using the FCC's digital LPTV software and the same make/model Sun Sparc computer work station in order to produce the exact same calculations to ensure that the 0.5% interference threshold for full-service TV/DTV/Class A protection and 2.0% interference threshold for LPTV/TV translator protection would not be exceeded. The population counts and interference calculations were calculated using U.S. Census 1990 data.

An in-core frequency search was performed initially to establish a list of all in-core digital channels with potential for interference-free operation for the W68AF TX facility. Digital Channel 10 was clearly the best looking channel available for the W68AF TX facility with respect to spacing and channel congestion. Referring to the detailed Longley-Rice study depicted in Exhibit 11, it can be seen that the proposed W68AF digital Channel 10 TX facility would not be predicted to cause more than 2.0% interference to digital or analog LPTV/TX stations and would not be predicted to cause more than 0.5% interference to digital or analog

full-service stations or Class A stations. The WNTV-DT Channel 9 Greenville, SC facility is predicted to receive 0.5% interference from the proposed W68AF Channel 10 TX facility which is allowable in accordance with Section 74.793(e) of the FCC rules.

FAA & ASR

An ASR and/or FAA determination is not required since the overall height of the tower is less than 200 feet above ground level and because it passes the slope test for the Toccoa RG Letourneau Field Airport.

Exhibits

Exhibits 1 and 2 represent the proposed W68AF digital Channel 10 TX facility's administration data, antenna and antenna structure specifications.

Exhibit 3 depicts the profile view of the proposed antenna on the antenna structure with all the appropriate elevations.

Exhibit 4 depicts the proposed antenna azimuth pattern.

Exhibit 5 depicts the proposed antenna azimuth pattern tabulation.

Exhibit 6 depicts the proposed antenna elevation pattern.

Exhibit 7 depicts the proposed antenna elevation pattern tabulation.

Exhibit 8 depicts the location of the W68AF site on a 7.5-Minute (Series) Topographic map.

Exhibit 9 depicts the proposed W68AF digital Channel 10 TX facility's 48.0 dBuV/m noise limited contour and demonstrates that it would completely encompass the city of Toccoa, GA.

Exhibit 10 is a contour comparison map between the licensed W68AF analog Channel 68 TX facility and the proposed W68AF digital Channel 10 TX facility.

Exhibit 11 is a detailed Longley-Rice interference study that was calculated using the FCC's digital LPTV software on a Sun Sparc work station using U.S. Census 1990 data.

Exhibit 12 is an FCC TOWAIR study which demonstrates that an FAA authorization or FCC antenna structure registration is not required for the W68AF antenna support structure.

Environmental Impact

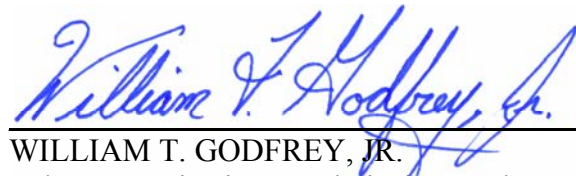
The proposed W68AF digital Channel 10 TX facility would have no significant environmental impact as defined in §1.1307 of the FCC Rules. The transmitter, transmission line and antenna system would produce an ERP of 0.2 kW. Assuming, as a worst case scenario, that the maximum lobe of radiation was oriented toward the base of the tower, it would produce a power density six feet above the ground of 0.002 mW/cm^2 . This is only 0.20% of the Maximum Permissible Exposure (MPE) limits for Occupational/Controlled Exposure and only 1.01% of the MPE limits for General Population/Uncontrolled Exposure authorized by the American National Standards Institute (ANSI). Since the operation of the proposed W68AF digital Channel 10 TX facility would not exceed 5.0% of the MPE limit for Occupational/Controlled Exposure or General Population/Uncontrolled Exposure at any point on the ground, the proposed W68AF TX facility would not be considered a "significant contributor" to the RF exposure environment pursuant to OET Bulletin 65, Edition 97-01. Therefore, contributions of exposure from other sources were not accounted for in this analysis. It is safe to conclude that the emissions would be insignificant and well within the maximum allowable requirements.

If other antennas are placed on the tower in the future, the applicant will cooperate with those users by reducing or completely terminating the power to the antenna when maintenance workers are in danger from the electromagnetic radiation emanating from the antenna.

Certification

This technical statement was prepared by William T. Godfrey, Jr., Telecommunications Technical Consultant with Kessler and Gehman Associates, Inc. having offices in Gainesville, Florida and has been working in the field of radio and television broadcast consulting since 1998. He graduated from the University of North Florida with a Bachelor of Arts degree in Criminal Justice and a minor in Mathematics in 1993. As a Professional in the field of Telecommunications he states under penalty of perjury that the information contained in this report is true and correct to the best of his knowledge and belief.




WILLIAM T. GODFREY, JR.
Telecommunications Technical Consultant

April 1, 2006

W68AF Digital Channel 10 TV Translator

Toccoa, Georgia

ENGINEERING SPECIFICATIONS

A. Transmitter Site:

Geographic coordinates (NAD27):

North Latitude 34° 36' 32"
West Longitude 83° 21' 51"

Transmitter Site: **Located 2.3 miles NW of Toccoa, GA**

**B. Main Studio Site Address: 260 14th Street N.W.
Atlanta, GA 30318**

C. Proposed Translator Facility:

Digital Channel: Number: **10**
Frequency: **192-198 MHz**
Frequency Offset: **N/A**
Emission Mask: **Simple**

D. Antenna Height:

Height of Site above Mean Sea Level (AMSL) **414.5 M**
Overall Height of Structure Above Ground **60.7 M**
(including all appurtenances)
Overall Height of Structure above Mean Sea Level **475.2 M**
(including all appurtenances)
Height of Site above Average Terrain: **63.7 M**
Antenna Height Radiation Center (R/C) Above Ground **59.5 M**
Antenna Height R/C Above Mean Sea Level **474.0 M**
Average of All Non-Odd Radials **350.8 M**
Antenna Height R/C Above Average Terrain **123.2 M**

E. System Parameters – Horizontal Polarization:

Average Power Required: **0.01 kW**
Input Power: **0.01 kW**
Transmission Line Loss: **0.79 dB**
Transmission Line Efficiency: **83.4%**
Maximum Antenna Gain in Beam Maximum: **12.30 dB**
Maximum Antenna Gain in Horizontal Plane: **12.08 dB**
Maximum Effective Radiated Power: **-6.99 dBk**
In Beam Maximum: **0.20 kW**
Maximum Effective Radiated Power: **-7.21 dBk**
In Horizontal Plane: **0.19 kW**

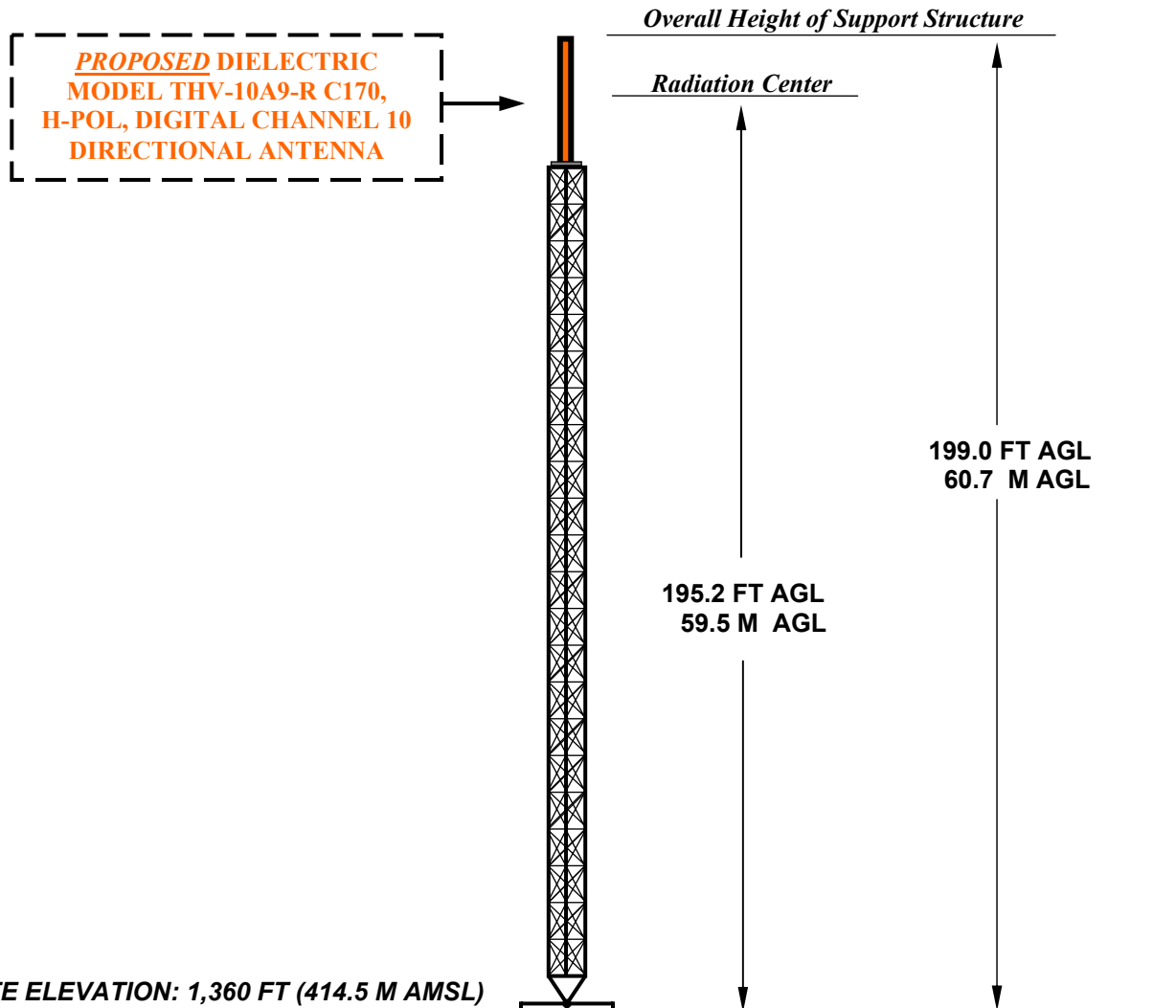
W68AF Digital Channel 10 Translator
Toccoa, Georgia

**DATA FOR PROPOSED DIRECTIONAL
TRANSMITTING ANTENNA**

- A. **Antenna:** Dielectric Model THV-10A9-R C170, Directional, Horizontally Polarized, Digital Channel 10 Antenna.
- B. **Electrical Beam Tilt:** 0.75°
- C. **Mechanical Beam Tilt:** None
- D.

<u>Maximum Power Gain</u>	<u>Horizontal Polarization</u>
Maximum: 17.0	(12.30 dB)
Horizontal: 16.1	(12.08 dB)
- E. **Polarization:** Horizontal
- F. **Transmitter Power Output:** 0.01 kW
- G. **Antenna Input Power:** 0.01 kW
- H. **Null Fill:** 1.2%
- I. **Transmission Line:** 1-5/8" 50-ohm FLEXLine®
- J. **Transmission Line Loss:** 0.316 dB/100-feet
- K. **Total Transmission Line:** 250 feet (76.2 meters)
- L. **Transmission Line Attenuation:** 0.79 dB
- M. **Emission Mask:** Simple

ANTENNA STRUCTURE ELEVATION VIEW



OVERALL HEIGHT AGL: 60.7 M
OVERALL HEIGHT AMSL: 475.2 M
RADIATION CENTER AGL: 59.5 M
RADIATION CENTER AMSL: 474.0 M
RADIATION CENTER HAAT: 123.2 M
AVERAGE OF NON-ODD RADIALS: 350.8 M
SITE ELEVATION HAAT: 63.7 M

COORDINATES: (NAD 27)
N. LATITUDE 34° 36' 32"
W. LONGITUDE 83° 21' 51"
Antenna Structure Registration Number:
N/A
FAA Aeronautical Study Number:
N/A

NOTE: NOT TO SCALE

KESSLER AND GEHMAN
TELECOMMUNICATIONS CONSULTING ENGINEERS
507 N.W. 60th Street, Suite C
Gainesville, Florida 32607

W68AF DIGITAL CHANNEL 10
TOCCOA, GEORGIA

20060401

EXHIBIT 3



Date	29 Mar 2006	
Call Letters	W68AF	Channel 10
Location	Toccoa, GA	
Customer	GPTC	
Antenna Type	THV-10A10-R C170	

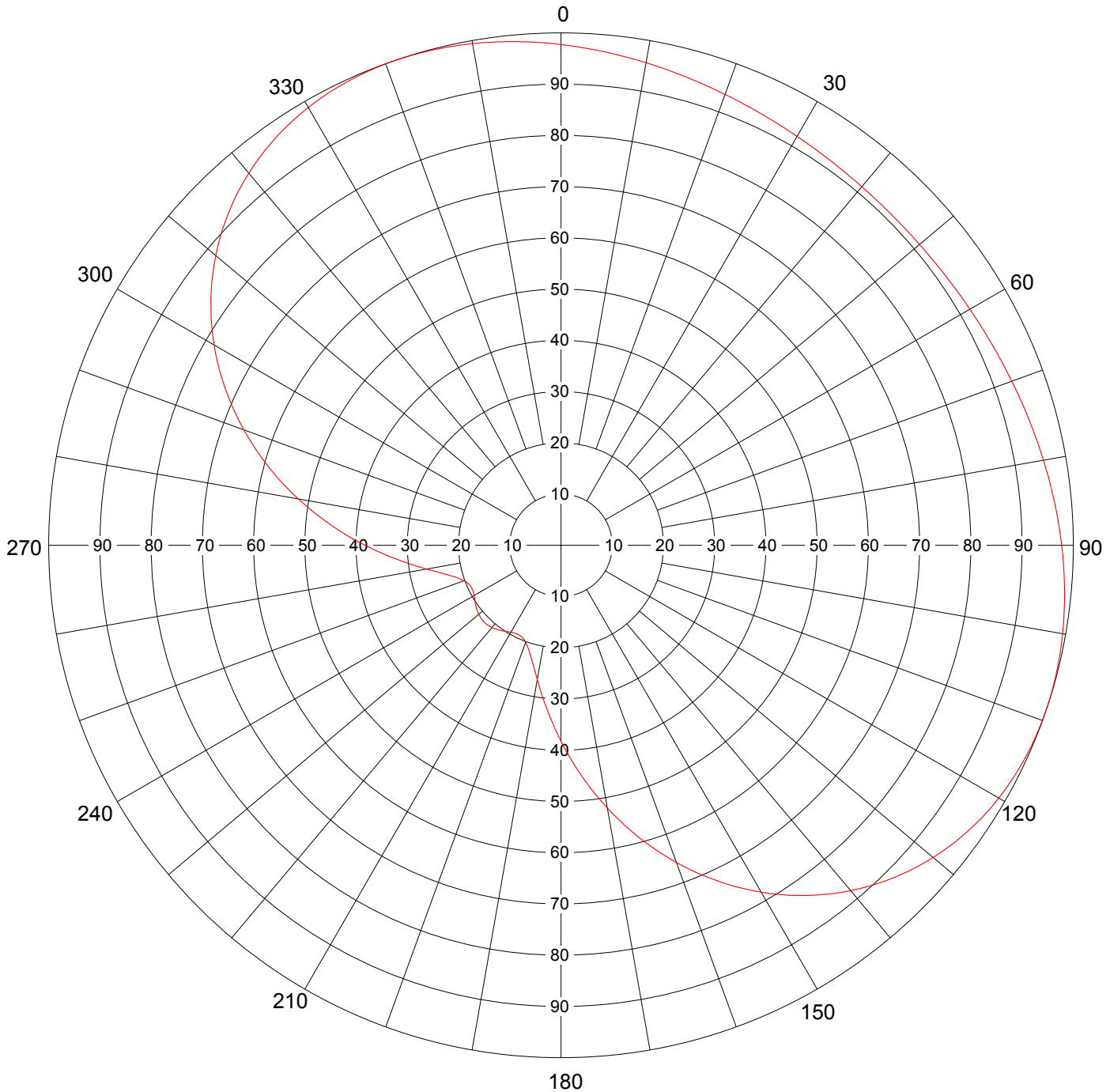
AZIMUTH PATTERN

Gain
Calculated / Measured

1.70 (2.30 dB)
Calculated

Frequency
Drawing #

195 MHz
THV-C170



Remarks: 45 degree rotation



Date **29 Mar 2006**
Call Letters **W68AF** Channel **10**
Location **Toccoa, GA**
Customer **GPTC**
Antenna Type **THV-10A10-R C170**

TABULATION OF AZIMUTH PATTERNAzimuth Pattern Drawing # **THV-C170**

Angle	Field	Angle	Field	Angle	Field	Angle	Field	Angle	Field	Angle	Field	Angle	Field	Angle	Field
0	0.977	45	0.912	90	0.977	135	0.918	180	0.383	225	0.212	270	0.383	315	0.918
1	0.975	46	0.913	91	0.979	136	0.911	181	0.369	226	0.212	271	0.396	316	0.924
2	0.973	47	0.913	92	0.981	137	0.904	182	0.357	227	0.212	272	0.409	317	0.931
3	0.971	48	0.913	93	0.983	138	0.896	183	0.344	228	0.211	273	0.423	318	0.937
4	0.969	49	0.913	94	0.985	139	0.888	184	0.332	229	0.211	274	0.437	319	0.943
5	0.967	50	0.914	95	0.987	140	0.880	185	0.320	230	0.210	275	0.450	320	0.948
6	0.965	51	0.914	96	0.988	141	0.871	186	0.309	231	0.209	276	0.464	321	0.953
7	0.963	52	0.915	97	0.990	142	0.862	187	0.297	232	0.207	277	0.478	322	0.958
8	0.960	53	0.915	98	0.991	143	0.853	188	0.287	233	0.206	278	0.492	323	0.963
9	0.958	54	0.916	99	0.993	144	0.844	189	0.276	234	0.205	279	0.507	324	0.967
10	0.956	55	0.917	100	0.994	145	0.834	190	0.267	235	0.203	280	0.521	325	0.971
11	0.954	56	0.917	101	0.995	146	0.824	191	0.257	236	0.202	281	0.535	326	0.974
12	0.952	57	0.918	102	0.996	147	0.814	192	0.249	237	0.200	282	0.549	327	0.978
13	0.950	58	0.919	103	0.997	148	0.804	193	0.240	238	0.199	283	0.563	328	0.981
14	0.948	59	0.920	104	0.998	149	0.793	194	0.233	239	0.197	284	0.577	329	0.984
15	0.946	60	0.921	105	0.999	150	0.782	195	0.226	240	0.196	285	0.591	330	0.987
16	0.944	61	0.923	106	0.999	151	0.771	196	0.220	241	0.195	286	0.605	331	0.989
17	0.942	62	0.924	107	1.000	152	0.759	197	0.214	242	0.194	287	0.618	332	0.991
18	0.940	63	0.925	108	1.000	153	0.747	198	0.210	243	0.193	288	0.632	333	0.993
19	0.938	64	0.927	109	1.000	154	0.735	199	0.205	244	0.193	289	0.646	334	0.995
20	0.936	65	0.928	110	1.000	155	0.723	200	0.202	245	0.193	290	0.659	335	0.996
21	0.935	66	0.930	111	0.999	156	0.710	201	0.199	246	0.194	291	0.672	336	0.997
22	0.933	67	0.931	112	0.999	157	0.698	202	0.197	247	0.195	292	0.685	337	0.998
23	0.931	68	0.933	113	0.998	158	0.685	203	0.195	248	0.197	293	0.698	338	0.999
24	0.930	69	0.935	114	0.997	159	0.672	204	0.194	249	0.199	294	0.710	339	1.000
25	0.928	70	0.936	115	0.996	160	0.659	205	0.193	250	0.202	295	0.723	340	1.000
26	0.927	71	0.938	116	0.995	161	0.646	206	0.193	251	0.205	296	0.735	341	1.000
27	0.925	72	0.940	117	0.993	162	0.632	207	0.193	252	0.210	297	0.747	342	1.000
28	0.924	73	0.942	118	0.991	163	0.618	208	0.194	253	0.214	298	0.759	343	1.000
29	0.923	74	0.944	119	0.989	164	0.605	209	0.195	254	0.220	299	0.771	344	0.999
30	0.921	75	0.946	120	0.987	165	0.591	210	0.196	255	0.226	300	0.782	345	0.999
31	0.920	76	0.948	121	0.984	166	0.577	211	0.197	256	0.233	301	0.793	346	0.998
32	0.919	77	0.950	122	0.981	167	0.563	212	0.199	257	0.240	302	0.804	347	0.997
33	0.918	78	0.952	123	0.978	168	0.549	213	0.200	258	0.249	303	0.814	348	0.996
34	0.917	79	0.954	124	0.974	169	0.535	214	0.202	259	0.257	304	0.824	349	0.995
35	0.917	80	0.956	125	0.971	170	0.521	215	0.203	260	0.267	305	0.834	350	0.994
36	0.916	81	0.958	126	0.967	171	0.507	216	0.205	261	0.276	306	0.844	351	0.993
37	0.915	82	0.960	127	0.963	172	0.492	217	0.206	262	0.287	307	0.853	352	0.991
38	0.915	83	0.963	128	0.958	173	0.478	218	0.207	263	0.297	308	0.862	353	0.990
39	0.914	84	0.965	129	0.953	174	0.464	219	0.209	264	0.309	309	0.871	354	0.988
40	0.914	85	0.967	130	0.948	175	0.450	220	0.210	265	0.320	310	0.880	355	0.987
41	0.913	86	0.969	131	0.943	176	0.437	221	0.211	266	0.332	311	0.888	356	0.985
42	0.913	87	0.971	132	0.937	177	0.423	222	0.211	267	0.344	312	0.896	357	0.983
43	0.913	88	0.973	133	0.931	178	0.409	223	0.212	268	0.357	313	0.904	358	0.981
44	0.913	89	0.975	134	0.924	179	0.396	224	0.212	269	0.369	314	0.911	359	0.979

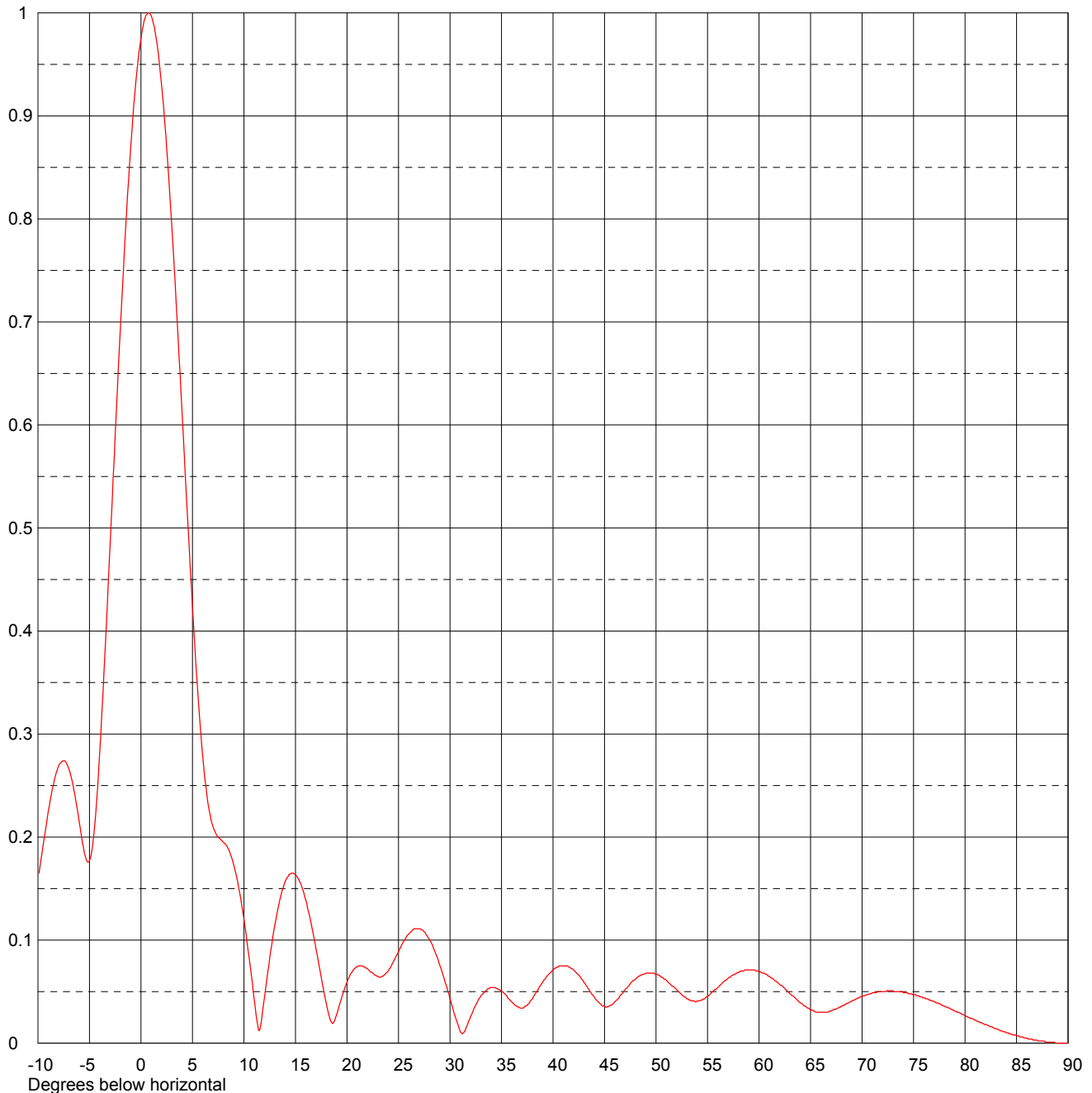
Remarks: 45 degree rotation



Date	29 Mar 2006	
Call Letters	W68AF	Channel 10
Location	Toccoa, GA	
Customer	GPTC	
Antenna Type	THV-10A10-R C170	

ELEVATION PATTERN

RMS Gain at Main Lobe	10.0 (10.00 dB)	Beam Tilt	0.75 Degrees
RMS Gain at Horizontal	9.5 (9.78 dB)	Frequency	195.00 MHz
Calculated / Measured	Calculated	Drawing #	10V100075-90



Remarks:



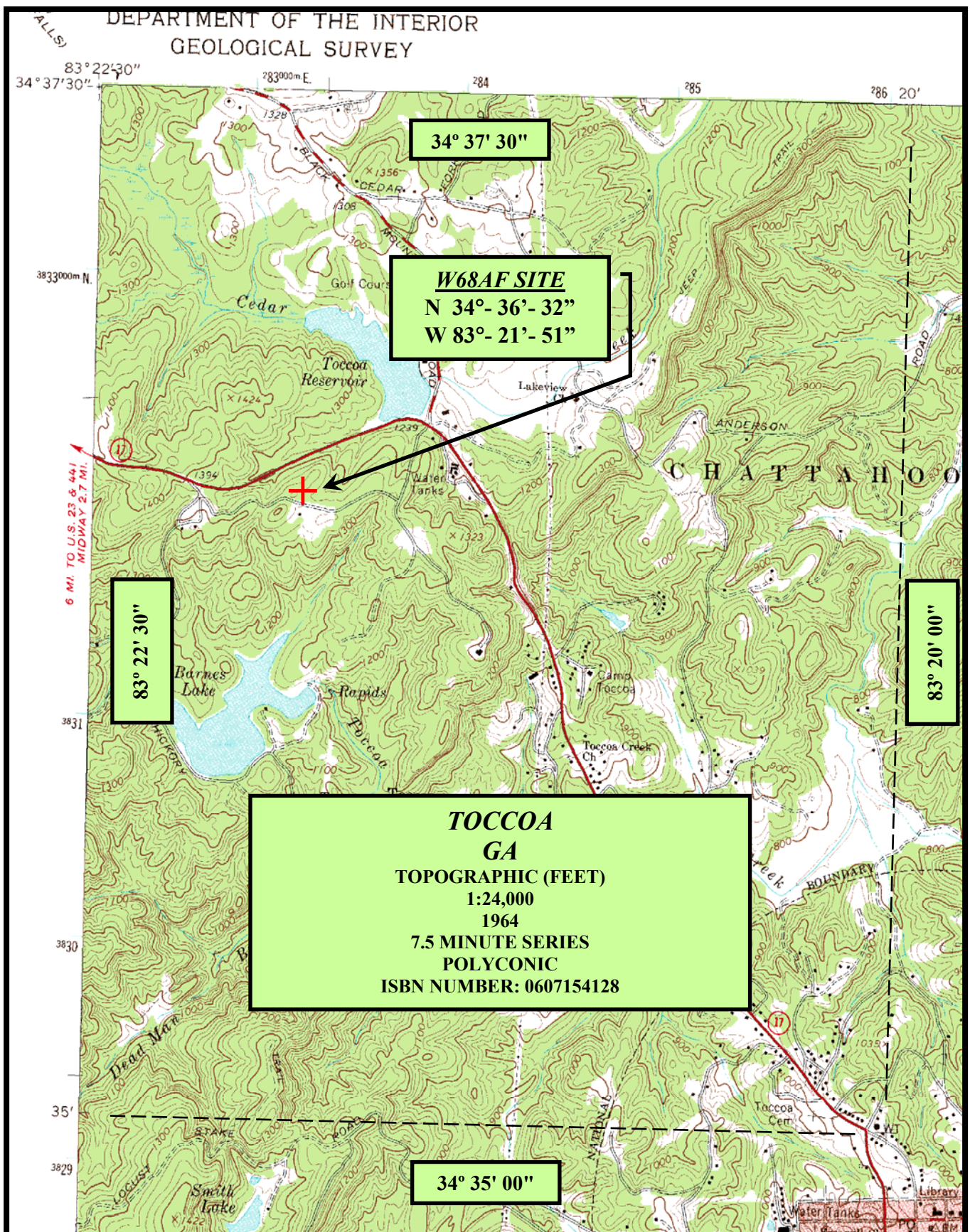
Date **29 Mar 2006**
 Call Letters **W68AF** Channel **10**
 Location **Toccoa, GA**
 Customer **GPTC**
 Antenna Type **THV-10A10-R C170**

TABULATION OF ELEVATION PATTERN

Elevation Pattern Drawing # **10V100075-90**

Angle	Field	Angle	Field	Angle	Field	Angle	Field	Angle	Field	Angle	Field
-10.0	0.158	2.4	0.882	10.6	0.075	30.5	0.026	51.0	0.061	71.5	0.050
-9.5	0.192	2.6	0.854	10.8	0.059	31.0	0.011	51.5	0.056	72.0	0.050
-9.0	0.225	2.8	0.824	11.0	0.042	31.5	0.013	52.0	0.052	72.5	0.051
-8.5	0.251	3.0	0.792	11.5	0.012	32.0	0.026	52.5	0.047	73.0	0.051
-8.0	0.269	3.2	0.757	12.0	0.045	32.5	0.037	53.0	0.043	73.5	0.050
-7.5	0.274	3.4	0.722	12.5	0.083	33.0	0.046	53.5	0.041	74.0	0.049
-7.0	0.266	3.6	0.685	13.0	0.115	33.5	0.051	54.0	0.041	74.5	0.048
-6.5	0.245	3.8	0.648	13.5	0.140	34.0	0.054	54.5	0.042	75.0	0.047
-6.0	0.215	4.0	0.610	14.0	0.157	34.5	0.053	55.0	0.045	75.5	0.046
-5.5	0.185	4.2	0.571	14.5	0.164	35.0	0.050	55.5	0.050	76.0	0.044
-5.0	0.177	4.4	0.533	15.0	0.164	35.5	0.046	56.0	0.054	76.5	0.042
-4.5	0.210	4.6	0.496	15.5	0.155	36.0	0.040	56.5	0.059	77.0	0.040
-4.0	0.283	4.8	0.459	16.0	0.139	36.5	0.036	57.0	0.063	77.5	0.038
-3.5	0.378	5.0	0.424	16.5	0.117	37.0	0.034	57.5	0.066	78.0	0.036
-3.0	0.483	5.2	0.390	17.0	0.091	37.5	0.037	58.0	0.069	78.5	0.034
-2.8	0.526	5.4	0.358	17.5	0.064	38.0	0.043	58.5	0.070	79.0	0.031
-2.6	0.569	5.6	0.328	18.0	0.038	38.5	0.051	59.0	0.071	79.5	0.029
-2.4	0.612	5.8	0.301	18.5	0.020	39.0	0.059	59.5	0.071	80.0	0.027
-2.2	0.654	6.0	0.278	19.0	0.028	39.5	0.066	60.0	0.070	80.5	0.024
-2.0	0.694	6.2	0.257	19.5	0.045	40.0	0.071	60.5	0.068	81.0	0.022
-1.8	0.733	6.4	0.241	20.0	0.059	40.5	0.074	61.0	0.065	81.5	0.020
-1.6	0.771	6.6	0.227	20.5	0.069	41.0	0.075	61.5	0.061	82.0	0.018
-1.4	0.806	6.8	0.217	21.0	0.074	41.5	0.074	62.0	0.057	82.5	0.016
-1.2	0.839	7.0	0.210	21.5	0.075	42.0	0.071	62.5	0.053	83.0	0.014
-1.0	0.869	7.2	0.205	22.0	0.072	42.5	0.066	63.0	0.048	83.5	0.012
-0.8	0.897	7.4	0.201	22.5	0.068	43.0	0.059	63.5	0.044	84.0	0.010
-0.6	0.921	7.6	0.199	23.0	0.065	43.5	0.052	64.0	0.039	84.5	0.009
-0.4	0.943	7.8	0.197	23.5	0.065	44.0	0.045	64.5	0.036	85.0	0.007
-0.2	0.961	8.0	0.195	24.0	0.070	44.5	0.039	65.0	0.032	85.5	0.006
0.0	0.976	8.2	0.193	24.5	0.079	45.0	0.036	65.5	0.030	86.0	0.005
0.2	0.987	8.4	0.190	25.0	0.089	45.5	0.036	66.0	0.030	86.5	0.004
0.4	0.995	8.6	0.186	25.5	0.099	46.0	0.040	66.5	0.030	87.0	0.003
0.6	0.999	8.8	0.180	26.0	0.106	46.5	0.046	67.0	0.031	87.5	0.002
0.8	1.000	9.0	0.173	26.5	0.111	47.0	0.052	67.5	0.033	88.0	0.001
1.0	0.997	9.2	0.165	27.0	0.111	47.5	0.058	68.0	0.036	88.5	0.001
1.2	0.990	9.4	0.156	27.5	0.108	48.0	0.062	68.5	0.038	89.0	0.000
1.4	0.980	9.6	0.145	28.0	0.101	48.5	0.066	69.0	0.041	89.5	0.000
1.6	0.967	9.8	0.133	28.5	0.090	49.0	0.068	69.5	0.043	90.0	0.000
1.8	0.950	10.0	0.120	29.0	0.076	49.5	0.068	70.0	0.045		
2.0	0.930	10.2	0.106	29.5	0.060	50.0	0.067	70.5	0.047		
2.2	0.908	10.4	0.090	30.0	0.043	50.5	0.064	71.0	0.049		

Remarks:

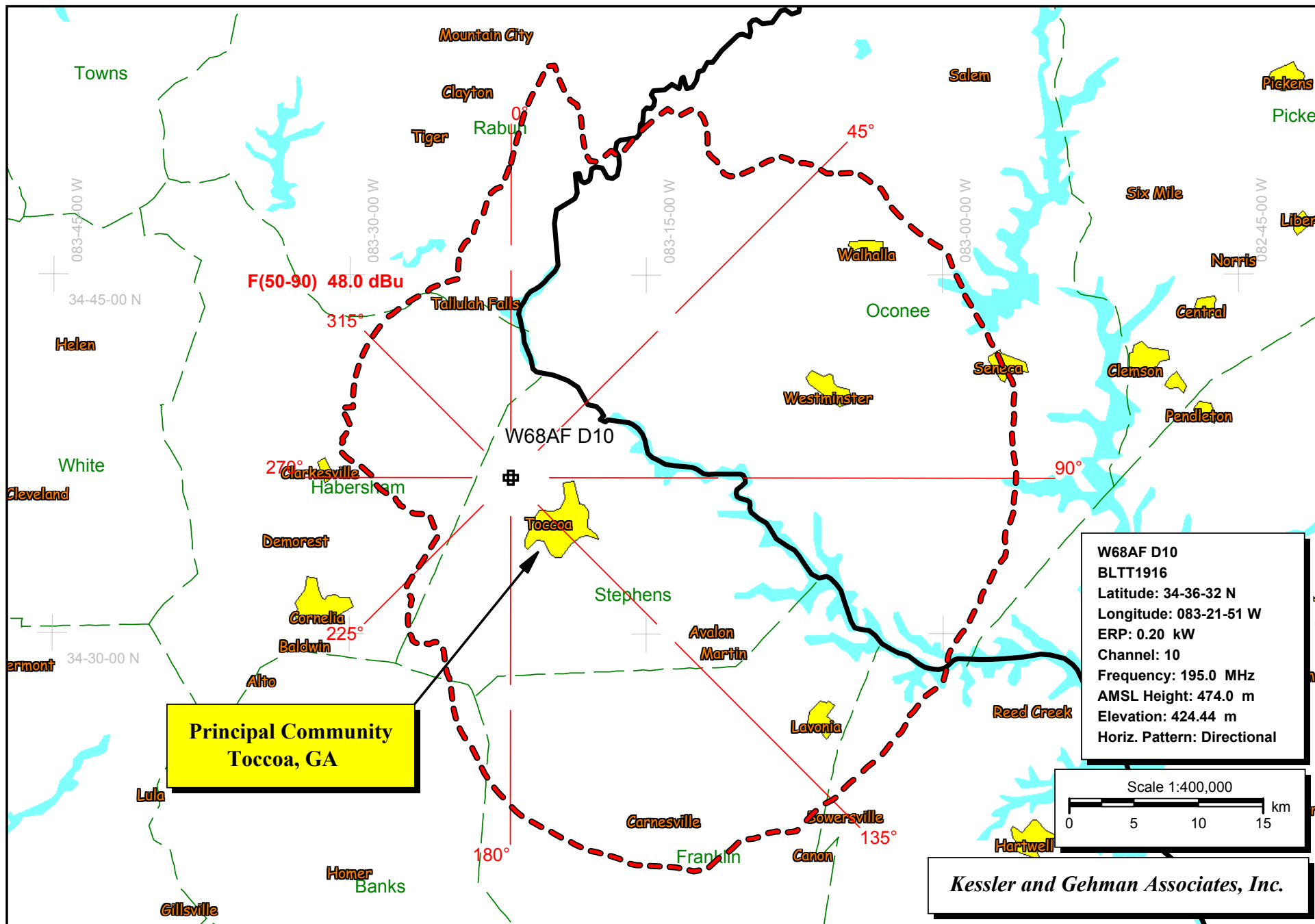


KESSLER AND GEHMAN
TELECOMMUNICATIONS CONSULTING ENGINEERS
507 N.W. 60th Street, Suite C
Gainesville, Florida 32607

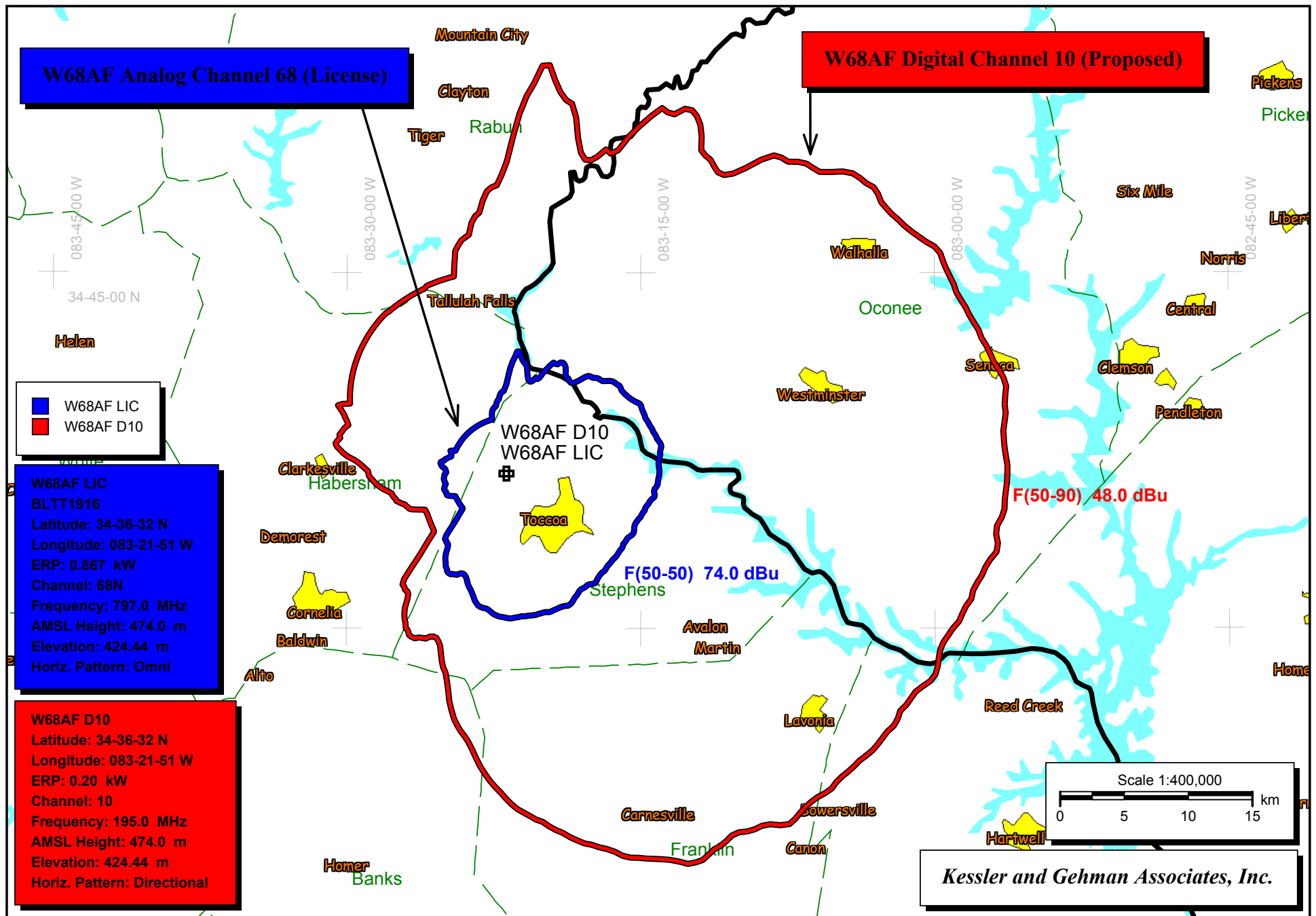
W68AF DIGITAL CHANNEL 10
Toccoa, Georgia

20060401

EXHIBIT 8



W68AF Digital Channel 10 Principal Community Contour



W68AF Analog Channel 68 (License) vs. W68AF Digital Channel 10 (Proposed)

1990 Census data selected
TV INTERFERENCE and SPACING ANALYSIS PROGRAM

Date: 04-01-2006 Time: 05:32:08

Record Selected for Analysis

W68AF D1 USERRECORD-01 TOCCOA GA US
Channel 10 ERP 0.2 kW HAAT 129. m RCAMSL 00474 m SIMPLE MASK
Latitude 034-36-32 Longitude 0083-21-51
Status APP Zone 2 Border
Dir Antenna Make usr Model USRPAT01 Beam tilt N Ref Azimuth 45.
Last update Cutoff date Docket
Comments
Applicant

Cell Size for Service Analysis 1.0 km/side

Distance Increments for Longley-Rice Analysis 1.00 km

Not full service station

Facility meets maximum power limit

Azimuth (Deg)	ERP (kW)	HAAT (m)	48.0 dBu F(50,90) (km)
0.0	0.191	83.7	25.2
45.0	0.166	172.9	33.6
90.0	0.191	239.8	39.0
135.0	0.168	191.3	35.1
180.0	0.030	212.5	25.6
225.0	0.009	65.2	10.7
270.0	0.030	36.2	10.7
315.0	0.168	33.0	15.5

Contour Overlap to Proposed Station

Contour Overlap Evaluation to Proposed Station Complete

Proposed facility OK to FCC Monitoring Stations

Proposed facility OK toward West Virginia quite zone

Proposed facility OK toward Table Mountain

Proposed facility is beyond the Canadian coordination distance

Proposed facility is beyond the Mexican coordination distance

Proposed station is OK toward AM broadcast stations

Start of Interference Analysis

Channel	Proposed Station Call	City/State	ARN
10	W68AF D1	TOCCOA GA	USERRECORD01

Stations Potentially Affected by Proposed Station

Chan	Call	City/State	Dist(km)	Status	Application	Ref. No.
09	W09AG	FRANKLIN NC	65.7	LIC	BLTTV	-19801112IF
09	W09AF	SYLVA, ETC. NC	85.3	LIC	BLTTV	-19781113IO
09	W09AD	WAYNESVILLE NC	101.8	LIC	BLTTV	-3897
09	W09AR	WEAVERVILLE NC	137.7	LIC	BLTTV	-19790607IA
09	WNTV	GREENVILLE SC	94.6	LIC	BLEDT	-20041123AKQ
09	WTVC	CHATTANOOGA TN	188.4	LIC	BLCT	-20021031ABE
10	WBIQ	BIRMINGHAM AL	340.8	APP	BFRCT	-20050815ACO
10	WBIQ	BIRMINGHAM AL	340.8	LIC	BLET	-20040412ACV
10	NEW	DOTHAN AL	416.4	APP	BNPTVL	-20000818AAN
10	NEW	DOTHAN AL	416.4	APP	BNPTVL	-20000830ADG
10	WALB	ALBANY GA	367.3	LIC	BLCT	-2413
10	WXIA-TV	ATLANTA GA	130.0	LIC	BLCDD	-20040302AAO
10	W10AQ	YOUNG HARRIS GA	62.4	LIC	BLTTV	-4061
10	WBLU-LP	LEXINGTON KY	395.5	CP	BPTVL	-20041208AAW
10	W10AR	LOUISA KY	395.0	LIC	BLTTV	-3958
10	W10CV	HATTIESBURG MS	419.7	CP	BNPTVL	-20000831BAC
10	W10AL	CHEROKEE, ETC. NC	97.7	LIC	BLTTV	-3607
10	W10AP	MARION, ETC. NC	170.6	LIC	BLTTV	-19800428IN
10	W10AD	MONTREAT, ETC. NC	146.4	LIC	BLTTV	-19790820IE
10	W10AK	SPRUCE PINE NC	181.8	LIC	BLTTV	-2068
10	WIS	COLUMBIA SC	245.2	LIC	BLCT	-20030210ABB
10	WIS	COLUMBIA SC	245.2	APP	BPCT	-20000501AEZ
10	W10AJ	GREENVILLE SC	94.0	LIC	BLTTV	-3015
10	WBIR-TV	KNOXVILLE TN	163.8	LIC	BLCT	-19800109KE
10	WLLP-CA	LAWRENCEBURG TN	366.7	LIC	BLTVL	-19891205ID
10	WSMV-TV	NASHVILLE TN	360.1	LIC	BLCDD	-20021029AAV
10	WSLS-TV	ROANOKE VA	408.4	LIC	BLCT	-19990813LD
11	WXIA-TV	ATLANTA GA	130.0	LIC	BMLCT	-19960208KF
11	W11AX	BAT CAVE, ETC. NC	136.1	LIC	BLTTV	-19800501IB
11	W11AN	BRYSON CITY, ETC. NC	86.0	LIC	BLTTV	-4960
11	W11AU	CANTON, ETC. NC	115.3	LIC	BLTTV	-19830425IF
11	W11AJ	FRANKLIN NC	65.4	LIC	BLTTV	-19811211IC
11	W11AQ	ROBBINSVILLE, ETC. NC	82.2	LIC	BLTTV	-19821008IB

Analysis of Interference to Affected Station 1

Analysis of current record

Channel	Call	City/State	Application	Ref. No.
09	W09AG	FRANKLIN NC	BLTTV	-19801112IF

Stations Potentially Affecting This Station

Chan	Call	City/State	Dist(km)	Status	Application	Ref. No.
08	W08BH	ANDREWS, ETC. NC	21.6	LIC	BLTT	-3301
08	W08AN	BRYSON CITY, ETC. NC	27.7	LIC	BLTTV	-19800725IC
08	W08AT	CHEROKEE, ETC. NC	40.8	LIC	BLTTV	-4878
08	WVLT-TV	KNOXVILLE TN	97.5	LIC	BLCT	-20040220ABY
09	WJSU-TV	ANNISTON AL	313.0	LIC	BPRM	-20030127AEY
09	WJSU-TV	ANNISTON AL	313.0	CP MOD	BMPCDT	-20040609ABL
09	WTVM	COLUMBUS GA	335.5	LIC	BLCT	-1079
09	WTVM	COLUMBUS GA	335.5	APP	BFRCT	-20050815ACC
09	WVAN-TV	SAVANNAH GA	382.2	LIC	BLET	-85
09	WSOC-TV	CHARLOTTE NC	259.4	LIC	BLCT	-20000726AAR
09	W09AF	SYLVA, ETC. NC	39.2	LIC	BLTTV	-19781113IO
09	W09AD	WAYNESVILLE NC	60.4	LIC	BLTTV	-3897
09	W09AR	WEAVERVILLE NC	106.5	LIC	BLTTV	-19790607IA
09	WNTV	GREENVILLE SC	109.6	LIC	BLEDT	-20041123AKQ
09	WNTV-DT	GREENVILLE SC	109.6	PLN	DTVPLN	-DTVP0059
09	WTVC	CHATTANOOGA TN	157.8	LIC	BLCT	-20021031ABE
09	WOPI-CA	KINGSPORT TN	191.1	CP	BPTVA	-20030910ACT
09	WOPI-CA	KINGSPORT TN	191.1	APP	BMPTVA	-20050314AKH
09	WOPI-CA	BRISTOL VA	191.1	LIC	BLTVA	-20021211AAB
09	WSWP-TV	GRANDVIEW WV	381.0	LIC	BLET	-19830831KF
10	W10AQ	YOUNG HARRIS GA	40.2	LIC	BLTTV	-4061
10	W10AL	CHEROKEE, ETC. NC	41.6	LIC	BLTTV	-3607
10	WBIR-TV	KNOXVILLE TN	98.0	LIC	BLCT	-19800109KE
10	W68AF D1	TOCCOA GA	65.7	APP	USERRECORD-01	

Proposal causes no interference

#####

Analysis of Interference to Affected Station 2

Analysis of current record

Channel	Call	City/State	Application	Ref. No.
09	W09AF	SYLVA, ETC. NC	BLTTV	-19781113IO

Stations Potentially Affecting This Station

Chan	Call	City/State	Dist(km)	Status	Application	Ref. No.
08	W08AN	BRYSON CITY, ETC. NC	25.8	LIC	BLTTV	-19800725IC
08	W08AT	CHEROKEE, ETC. NC	14.9	LIC	BLTTV	-4878
08	WVLT-TV	KNOXVILLE TN	96.3	LIC	BLCT	-20040220ABY
09	WJSU-TV	ANNISTON AL	352.1	LIC	BPRM	-20030127AEY
09	WJSU-TV	ANNISTON AL	352.1	CP MOD	BMPCDT	-20040609ABL
09	WTVM	COLUMBUS GA	367.6	LIC	BLCT	-1079
09	WTVM	COLUMBUS GA	367.6	APP	BFRCT	-20050815ACC
09	WVAN-TV	SAVANNAH GA	387.4	LIC	BLET	-85
09	WAPM-CA	LYNCH/BENHAM KY	174.4	LIC	BLTVL	-19970829JB
09	WSOC-TV	CHARLOTTE NC	226.5	LIC	BLCT	-20000726AAR
09	W09AG	FRANKLIN NC	39.2	LIC	BLTTV	-19801112IF
09	W09AD	WAYNESVILLE NC	21.2	LIC	BLTTV	-3897
09	W09AR	WEAVERVILLE NC	67.4	LIC	BLTTV	-19790607IA
09	WNTV	GREENVILLE SC	87.6	LIC	BLEDT	-20041123AKQ

09	WNTV-DT	GREENVILLE SC	87.7	PLN	DTVPLN	-DTVP0059
09	WTVC	CHATTANOOGA TN	191.7	LIC	BLCT	-20021031ABE
09	WOPI-CA	KINGSPORT TN	153.4	CP	BPTVA	-20030910ACT
09	WOPI-CA	KINGSPORT TN	153.4	APP	BMPTVA	-20050314AKH
09	WOPI-CA	BRISTOL VA	153.4	LIC	BLTVA	-20021211AAB
09	WSWP-TV	GRANDVIEW WV	344.4	LIC	BLET	-19830831KF
10	W10AL	CHEROKEE, ETC. NC	16.8	LIC	BLTTV	-3607
10	WBIR-TV	KNOXVILLE TN	96.1	LIC	BLCT	-19800109KE
10	W68AF D1	TOCCOA GA	85.3	APP	USERRECORD-01	

Proposal causes no interference

#####

Analysis of Interference to Affected Station 3

Analysis of current record

Channel	Call	City/State	Application	Ref. No.
09	W09AD	WAYNESVILLE NC	BLTTV	-3897

Stations Potentially Affecting This Station

Chan	Call	City/State	Dist(km)	Status	Application	Ref. No.
08	W08AO	CANTON, ETC. NC	15.5	LIC	BLTTV	-1158
08	W08AT	CHEROKEE, ETC. NC	26.0	LIC	BLTTV	-4878
08	WVLT-TV	KNOXVILLE TN	100.6	LIC	BLCT	-20040220ABY
09	WJSU-TV	ANNISTON AL	373.3	LIC	BPRM	-20030127AEY
09	WJSU-TV	ANNISTON AL	373.3	CP MOD	BMPCDT	-20040609ABL
09	WTVM	COLUMBUS GA	386.4	LIC	BLCT	-1079
09	WTVM	COLUMBUS GA	386.4	APP	BFRCT	-20050815ACC
09	WVAN-TV	SAVANNAH GA	393.4	LIC	BLET	-85
09	WAPM-CA	LYNCH/BENHAM KY	159.4	LIC	BLTVL	-19970829JB
09	WSOC-TV	CHARLOTTE NC	210.7	LIC	BLCT	-20000726AAR
09	W09AG	FRANKLIN NC	60.4	LIC	BLTTV	-19801112IF
09	W09AF	SYLVA, ETC. NC	21.2	LIC	BLTTV	-19781113IO
09	W09AR	WEAVERVILLE NC	46.4	LIC	BLTTV	-19790607IA
09	WNTV	GREENVILLE SC	82.9	LIC	BLEDT	-20041123AKQ
09	WNTV-DT	GREENVILLE SC	83.0	PLN	DTVPLN	-DTVP0059
09	WTVC	CHATTANOOGA TN	210.1	LIC	BLCT	-20021031ABE
09	WOPI-CA	KINGSPORT TN	132.7	CP	BPTVA	-20030910ACT
09	WOPI-CA	KINGSPORT TN	132.7	APP	BMPTVA	-20050314AKH
09	WOPI-CA	BRISTOL VA	132.7	LIC	BLTVA	-20021211AAB
09	WSWP-TV	GRANDVIEW WV	324.2	LIC	BLET	-19830831KF
10	W10AL	CHEROKEE, ETC. NC	26.9	LIC	BLTTV	-3607
10	WBIR-TV	KNOXVILLE TN	99.9	LIC	BLCT	-19800109KE
10	W68AF D1	TOCCOA GA	101.8	APP	USERRECORD-01	

Proposal causes no interference

#####

Analysis of Interference to Affected Station 4

Analysis of current record

Channel	Call	City/State	Application	Ref. No.
---------	------	------------	-------------	----------

09 W09AR WEAVERVILLE NC BLTTV -19790607IA

Stations Potentially Affecting This Station

Chan	Call	City/State	Dist(km)	Status	Application	Ref. No.
08	W08BP	BEAVER DAM NC	16.9	LIC	BLTTV	-20011001AKM
08	W08AO	CANTON, ETC. NC	31.8	LIC	BLTTV	-1158
08	W08AX	MARSHALL NC	19.1	LIC	BLTTV	-1737
08	WVLT-TV	KNOXVILLE TN	129.9	LIC	BLCT	-20040220ABY
09	WAPM-CA	LYNCH/BENHAM KY	141.7	LIC	BLTVL	-19970829JB
09	WSOC-TV	CHARLOTTE NC	173.1	LIC	BLCT	-20000726AAR
09	W09AG	FRANKLIN NC	106.5	LIC	BLTTV	-19801112IF
09	W09AF	SYLVA, ETC. NC	67.4	LIC	BLTTV	-19781113IO
09	W09AD	WAYNESVILLE NC	46.4	LIC	BLTTV	-3897
09	WHMC-TV	CONWAY SC	369.2	LIC	BPRM	-20030318AIM
09	WHMC	CONWAY SC	369.2	LIC	BLEDT	-20050830ACK
09	WNTV	GREENVILLE SC	81.8	LIC	BLEDT	-20041123AKQ
09	WNTV-DT	GREENVILLE SC	81.9	PLN	DTVPLN	-DTVP0059
09	WTVC	CHATTANOOGA TN	254.9	LIC	BLCT	-20021031ABE
09	WOPI-CA	KINGSPORT TN	93.7	CP	BPTVA	-20030910ACT
09	WOPI-CA	KINGSPORT TN	93.7	APP	BMPTVA	-20050314AKH
09	WOPI-CA	BRISTOL VA	93.7	LIC	BLTVA	-20021211AAB
09	WSWP-TV	GRANDVIEW WV	285.2	LIC	BLET	-19830831KF
10	W10AD	MONTREAT, ETC. NC	20.9	LIC	BLTTV	-19790820IE
10	WBIR-TV	KNOXVILLE TN	128.8	LIC	BLCT	-19800109KE
10	W68AF D1	TOCCOA GA	137.7	APP	USERRECORD-01	

Proposed station is beyond the site to
nearest cell evaluation distance

#####

Analysis of Interference to Affected Station 5

DTV Baseline Analysis

Channel	Call	City/State	Application	Ref. No.
09	WNTV-DT	GREENVILLE SC	DTVPLN	-DTVP0059

Stations Potentially Affecting This Station

Chan	Call	City/State	Dist(km)	Status	Application	Ref. No.
08	WGTV	ATHENS GA	203.1	PLN	DTVPLN	-NPLN0528
08	WOLO-DT	COLUMBIA SC	163.8	PLN	DTVPLN	-DTVP0049
08	WVLT-TV	KNOXVILLE TN	182.0	PLN	DTVPLN	-NPLN0565
09	WTVM	COLUMBUS GA	364.2	PLN	DTVPLN	-NPLN0588
09	WVANTV	SAVANNAH GA	319.1	PLN	DTVPLN	-NPLN0589
09	WSOCTV	CHARLOTTE NC	157.2	PLN	DTVPLN	-NPLN0608
09	WTVC	CHATTANOOGA TN	265.6	PLN	DTVPLN	-NPLN0624
09	WSWPTV	GRANDVIEW WV	352.2	PLN	DTVPLN	-NPLN0634
10	WXIA-DT	ATLANTA GA	220.0	PLN	DTVPLN	-DTVP0070
10	WIS	COLUMBIA SC	176.5	PLN	DTVPLN	-NPLN0680
10	WBIRTV	KNOXVILLE TN	182.1	PLN	DTVPLN	-NPLN0682

Results for: 9A SC GREENVILLE DTVPLN DTVP0059 PLN
HAAT 392.0 m, ATV ERP 5.1 kW

	POPULATION	AREA (sq km)
within Noise Limited Contour	1369847	22466.8
not affected by terrain losses	1267225	20849.2
lost to NTSC IX	88341	2119.4
lost to additional IX by ATV	0	0.0
lost to ATV IX only	0	0.0
lost to all IX	88341	2119.4

NTSC Baseline Analysis

Channel	Call	City/State	Application	Ref. No.
29	WNTV	GREENVILLE SC	DTVPLN	-NPLN1366

Stations Potentially Affecting This Station

Chan	Call	City/State	Dist(km)	Status	Application	Ref. No.
21	WHNS	ASHEVILLE NC	36.5	PLN	DTVPLN	-NPLN1115
22	WCNC-DT	CHARLOTTE NC	121.4	PLN	DTVPLN	-DTVP0492
25	WUNF-DT	ASHEVILLE NC	62.4	PLN	DTVPLN	-DTVP0608
28	WCYB-DT	BRISTOL VA	169.9	PLN	DTVPLN	-DTVP0731
29	WDCOTV	COCHRAN GA	285.5	PLN	DTVPLN	-NPLN1354
29	WKSOTV	SOMERSET KY	329.0	PLN	DTVPLN	-NPLN1357
29	WUNJ-DT	WILMINGTON NC	396.9	PLN	DTVPLN	-DTVP0750
29	WXLV-DT	WINSTON-SALEM NC	243.9	PLN	DTVPLN	-DTVP0751
29	WTCI-DT	CHATTANOOGA TN	262.8	PLN	DTVPLN	-DTVP0766
29	WKRPTV	CHARLESTON WV	396.3	PLN	DTVPLN	-NPLN1371
30	WAGT-DT	AUGUSTA GA	176.9	PLN	DTVPLN	-DTVP0782
30	WNSCTV	ROCK HILL SC	127.4	PLN	DTVPLN	-NPLN1391
30	WVLT-DT	KNOXVILLE TN	182.0	PLN	DTVPLN	-DTVP0802
32	WNEGTV	TOCCOA GA	94.7	PLN	DTVPLN	-NPLN1425
33	WUNFTV	ASHEVILLE NC	62.4	PLN	DTVPLN	-NPLN1453
36	WCNCTV	CHARLOTTE NC	121.4	PLN	DTVPLN	-NPLN1522
43	WRET-DT	SPARTANBURG SC	54.1	PLN	DTVPLN	-DTVP1242
43	WTNZ	KNOXVILLE TN	182.5	PLN	DTVPLN	-NPLN1649
44	WAGV	HARLAN KY	224.2	PLN	DTVPLN	-NPLN1662

Results for: 29N SC GREENVILLE DTVPLN NPLN1366 PLN

	POPULATION	AREA (sq km)
within Noise Limited Contour	1368884	22454.1
not affected by terrain losses	1217984	20171.6
lost to NTSC IX	17714	744.9
lost to additional IX by ATV	2195	85.9
lost to all IX	19909	830.8

Analysis of current record

Channel	Call	City/State	Application	Ref. No.
09	WNTV	GREENVILLE SC	BLEDT	-20041123AKQ

Stations Potentially Affecting This Station

Chan	Call	City/State	Dist(km)	Status	Application	Ref. No.
08	WGTV	ATHENS GA	203.1	LIC	BMLET	-19890727KG
08	WOLO-TV	COLUMBIA SC	176.5	LIC	BLCDDT	-20021106AAU
08	WOLO-DT	COLUMBIA SC	163.8	PLN	DTVPLN	-DTVP0049
08	WVLT-TV	KNOXVILLE TN	182.5	LIC	BLCT	-20040220ABY
09	WJSU-TV	ANNISTON AL	396.8	LIC	BPRM	-20030127AEY
09	WJSU-TV	ANNISTON AL	396.8	CP MOD	BMPCDDT	-20040609ABL
09	WTVM	COLUMBUS GA	364.3	LIC	BLCT	-1079

09	WTVM	COLUMBUS GA	364.3	APP	BFRCT	-20050815ACC
09	WVAN-TV	SAVANNAH GA	319.2	LIC	BLET	-85
09	WXGA-TV	WAYCROSS GA	413.8	LIC	BPRM	-20010327AJD
09	WXGA-TV	WAYCROSS GA	413.8	CP MOD	BMPEDT	-20020923ABU
09	WSOC-TV	CHARLOTTE NC	157.2	LIC	BLCT	-20000726AAR
09	WHMC-TV	CONWAY SC	322.1	LIC	BPRM	-20030318AIM
09	WHMC	CONWAY SC	322.1	LIC	BLEDT	-20050830ACK
09	WTV	CHATTANOOGA TN	265.7	LIC	BLCT	-20021031ABE
09	WSWP-TV	GRANDVIEW WV	352.2	LIC	BLET	-19830831KF
10	WXIA-TV	ATLANTA GA	220.1	LIC	BLCDT	-20040302AAO
10	WXIA-DT	ATLANTA GA	220.1	PLN	DTVPLN	-DTVP0070
10	WIS	COLUMBIA SC	176.6	LIC	BLCT	-20030210ABB
10	WIS	COLUMBIA SC	176.6	APP	BPCT	-20000501AEZ
10	WBIR-TV	KNOXVILLE TN	182.0	LIC	BLCT	-19800109KE
10	W68AF D1	TOCCOA GA	94.6	APP	USERRECORD-01	

Total scenarios = 2

Result key: 1
 Scenario 1 Affected station 5
 Before Analysis

Results for: 9A SC GREENVILLE BLEDT 20041123AKQ LIC
 HAAT 378.0 m, ATV ERP 65.0 kW

	POPULATION	AREA (sq km)
within Noise Limited Contour	1650522	34026.6
not affected by terrain losses	1514872	30732.4
lost to NTSC IX	48098	2068.8
lost to additional IX by ATV	35	1.0
lost to ATV IX only	382	26.0
lost to all IX	48133	2069.8

Potential Interfering Stations Included in above Scenario 1

9N GA COLUMBUS	BLCT	1079	LIC
9N GA SAVANNAH	BLET	85	LIC
9N NC CHARLOTTE	BLCT	20000726AAR	LIC
9N TN CHATTANOOGA	BLCT	20021031ABE	LIC
9N WV GRANDVIEW	BLET	19830831KF	LIC
9A SC CONWAY	BPRM	20030318AIM	LIC

After Analysis

Results for: 9A SC GREENVILLE BLEDT 20041123AKQ LIC
 HAAT 378.0 m, ATV ERP 65.0 kW

	POPULATION	AREA (sq km)
within Noise Limited Contour	1650522	34026.6
not affected by terrain losses	1514872	30732.4
lost to NTSC IX	48098	2068.8
lost to additional IX by ATV	6323	179.1
lost to ATV IX only	9043	291.1
lost to all IX	54421	2247.8

Potential Interfering Stations Included in above Scenario 1

9N GA COLUMBUS	BLCT	1079	LIC
----------------	------	------	-----

9N GA SAVANNAH	BLET	85	LIC
9N NC CHARLOTTE	BLCT	20000726AAR	LIC
9N TN CHATTANOOGA	BLCT	20021031ABE	LIC
9N WV GRANDVIEW	BLET	19830831KF	LIC
9A SC CONWAY	BPRM	20030318AIM	LIC
10A GA TOCCOA	USERRECORD01		APP

The following station failed the de minimis interference criteria.

10D GA TOCCOA USERRECORD01
 ERP 0.20 kW HAAT 129.0 m RCAMSL 474.0 m
 Antenna usr USRPAT01

Due to interference to the following station and scenario: 1

9D SC GREENVILLE BLEDT 20041123AKQ
 ERP 65.00 kW HAAT 378.0 m RCAMSL 683.0 m
 Antenna CDB 00000000064722

Percent Service lost without proposal:	-22.2	to BLEDT	20041123AKQ
Percent Service lost with proposal:	-21.7	to BLEDT	20041123AKQ

Result key: 2
 Scenario 2 Affected station 5
 Before Analysis

Results for: 9A SC GREENVILLE BLEDT 20041123AKQ LIC
 HAAT 378.0 m, ATV ERP 65.0 kW

	POPULATION	AREA (sq km)
within Noise Limited Contour	1650522	34026.6
not affected by terrain losses	1514872	30732.4
lost to NTSC IX	48098	2068.8
lost to additional IX by ATV	35	1.0
lost to ATV IX only	382	25.0
lost to all IX	48133	2069.8

Potential Interfering Stations Included in above Scenario 2

9N GA COLUMBUS	BLCT	1079	LIC
9N GA SAVANNAH	BLET	85	LIC
9N NC CHARLOTTE	BLCT	20000726AAR	LIC
9N TN CHATTANOOGA	BLCT	20021031ABE	LIC
9N WV GRANDVIEW	BLET	19830831KF	LIC
9A SC CONWAY	BLEDT	20050830ACK	LIC

After Analysis

Results for: 9A SC GREENVILLE BLEDT 20041123AKQ LIC
 HAAT 378.0 m, ATV ERP 65.0 kW

	POPULATION	AREA (sq km)
within Noise Limited Contour	1650522	34026.6
not affected by terrain losses	1514872	30732.4
lost to NTSC IX	48098	2068.8
lost to additional IX by ATV	6323	179.1
lost to ATV IX only	9043	290.1
lost to all IX	54421	2247.8

Potential Interfering Stations Included in above Scenario 2

9N GA COLUMBUS	BLCT	1079	LIC
9N GA SAVANNAH	BLET	85	LIC
9N NC CHARLOTTE	BLCT	20000726AAR	LIC
9N TN CHATTANOOGA	BLCT	20021031ABE	LIC
9N WV GRANDVIEW	BLET	19830831KF	LIC
9A SC CONWAY	BLEDT	20050830ACK	LIC
10A GA TOCCOA	USERRECORD01		APP

The following station failed the de minimis interference criteria.

10D GA TOCCOA USERRECORD01
 ERP 0.20 kW HAAT 129.0 m RCAMSL 474.0 m
 Antenna usr USRPAT01

Due to interference to the following station and scenario: 2

9D SC GREENVILLE BLEDT 20041123AKQ
 ERP 65.00 kW HAAT 378.0 m RCAMSL 683.0 m
 Antenna CDB 00000000064722

Percent Service lost without proposal: -22.2 to BLEDT 20041123AKQ
 Percent Service lost with proposal: -21.7 to BLEDT 20041123AKQ

#####

Analysis of Interference to Affected Station 6

NTSC Baseline Analysis

Channel	Call	City/State	Application	Ref. No.
09	WTVG	CHATTANOOGA TN	DTVPLN	-NPLN0624

Stations Potentially Affecting This Station

Chan	Call	City/State	Dist(km)	Status	Application	Ref. No.
08	WGTV	ATHENS GA	185.1	PLN	DTVPLN	-NPLN0528
08	WVLT	KNOXVILLE TN	156.7	PLN	DTVPLN	-NPLN0565
08	WDCN	NASHVILLE TN	168.5	PLN	DTVPLN	-NPLN0566
09	WTVM	COLUMBUS GA	319.3	PLN	DTVPLN	-NPLN0588
09	WNIN	EVANSVILLE IN	366.8	PLN	DTVPLN	-NPLN0596
09	WTVA	TUPELO MS	377.4	PLN	DTVPLN	-NPLN0604
09	WSOCTV	CHARLOTTE NC	417.0	PLN	DTVPLN	-NPLN0608
09	WNTV-DT	GREENVILLE SC	265.6	PLN	DTVPLN	-DTVP0059
10	WXIA-DT	ATLANTA GA	180.4	PLN	DTVPLN	-DTVP0070
10	WBIRTV	KNOXVILLE TN	155.9	PLN	DTVPLN	-NPLN0682
10	WSMV-DT	NASHVILLE TN	177.2	PLN	DTVPLN	-DTVP0077

Results for:	9N TN CHATTANOOGA	DTVPLN	NPLN0624	PLN
		POPULATION	AREA (sq km)	
within Noise Limited Contour		1146787	30561.5	
not affected by terrain losses		946451	23630.1	
lost to NTSC IX		57773	1604.2	
lost to additional IX by ATV		0	2.0	
lost to all IX		57773	1606.2	

Analysis of current record

Channel	Call	City/State	Application Ref. No.
09	WTVC	CHATTANOOGA TN	BLCT -20021031ABE

Stations Potentially Affecting This Station

Chan	Call	City/State	Dist(km)	Status	Application Ref. No.
08	WGTW	ATHENS GA	185.1	LIC	BMLET -19890727KG
08	WVLT-TV	KNOXVILLE TN	154.2	LIC	BLCT -20040220ABY
08	WNPT	NASHVILLE TN	168.4	LIC	BLET -363
09	WJSU-TV	ANNISTON AL	200.0	LIC	BPRM -20030127AEY
09	WJSU-TV	ANNISTON AL	200.0	CP MOD	BMPCDT -20040609ABL
09	WTVM	COLUMBUS GA	319.2	LIC	BLCT -1079
09	WTVM	COLUMBUS GA	319.2	APP	BFRCT -20050815ACC
09	WNIN	EVANSVILLE IN	358.9	LIC	BLET -20030423ABK
09	WTVA	TUPELO MS	377.2	LIC	BLCT -1234
09	WSOC-TV	CHARLOTTE NC	417.0	LIC	BLCT -20000726AAR
09	WNTV	GREENVILLE SC	265.7	LIC	BLEDT -20041123AKQ
09	WNTV-DT	GREENVILLE SC	265.7	PLN	DTVPLN -DTVP0059
10	WXIA-TV	ATLANTA GA	180.3	LIC	BLCDDT -20040302AAO
10	WXIA-DT	ATLANTA GA	180.3	PLN	DTVPLN -DTVP0070
10	WBIR-TV	KNOXVILLE TN	156.0	LIC	BLCT -19800109KE
10	WSMV-DT	NASHVILLE TN	177.2	PLN	DTVPLN -DTVP0077
10	W68AF D1	TOCCOA GA	188.4	APP	USERRECORD-01

Proposal causes no interference

#####

Analysis of Interference to Affected Station 7

Analysis of current record

Channel	Call	City/State	Application Ref. No.
10	WBIQ	BIRMINGHAM AL	BFRCT -20050815ACO

Stations Potentially Affecting This Station

Chan	Call	City/State	Dist(km)	Status	Application Ref. No.
09	WJSU-TV	ANNISTON AL	38.5	LIC	BPRM -20030127AEY
09	WJSU-TV	ANNISTON AL	38.5	CP MOD	BMPCDT -20040609ABL
09	WTVA	TUPELO MS	213.9	LIC	BLCT -1234
10	WALA-TV	MOBILE AL	324.5	LIC	BLCT -2347
10	WALB	ALBANY GA	365.5	LIC	BLCT -2413
10	WXIA-TV	ATLANTA GA	231.1	LIC	BLCDDT -20040302AAO
10	WXIA-DT	ATLANTA GA	231.1	PLN	DTVPLN -DTVP0070
10	WMAB-TV	MISSISSIPPI STATE MS	217.9	LIC	BLEDT -20030326ABX
10	WMAB-DT	MISSISSIPPI STATE MS	217.9	LIC	BPRM -20010629ACP
10	WBIR-TV	KNOXVILLE TN	383.5	LIC	BLCT -19800109KE
10	WKNO	MEMPHIS TN	333.2	LIC	BLET -20031020ABF
10	WSMV-DT	NASHVILLE TN	295.3	PLN	DTVPLN -DTVP0077
11	WDIQ	DOZIER AL	218.0	LIC	BLEDT -20031023AAG
11	WDIQ	DOZIER AL	218.0	LIC	BPRM -20000328AAJ
11	WTOK-TV	MERIDIAN MS	217.8	LIC	BLCT -2503
10	W68AF D1	TOCCOA GA	340.8	APP	USERRECORD-01

Proposal causes no interference

#####

Analysis of Interference to Affected Station 8

NTSC Baseline Analysis

Channel	Call	City/State	Application	Ref. No.
10	WBIQ	BIRMINGHAM AL	DTVPLN	-NPLN0636

Stations Potentially Affecting This Station

Chan	Call	City/State	Dist(km)	Status	Application	Ref. No.
09	WTVA	TUPELO MS	214.5	PLN	DTVPLN	-NPLN0604
10	WALATV	MOBILE AL	325.2	PLN	DTVPLN	-NPLN0637
10	WALBT	ALBANY GA	365.3	PLN	DTVPLN	-NPLN0645
10	WXIA-DT	ATLANTA GA	230.3	PLN	DTVPLN	-DTVP0070
10	WBIRTV	KNOXVILLE TN	382.7	PLN	DTVPLN	-NPLN0682
10	WKNO	MEMPHIS TN	333.6	PLN	DTVPLN	-NPLN0683
10	WSMV-DT	NASHVILLE TN	294.9	PLN	DTVPLN	-DTVP0077
11	WTOKTV	MERIDIAN MS	218.7	PLN	DTVPLN	-NPLN0722

Results for: 10N AL BIRMINGHAM DTVPLN NPLN0636 PLN

	POPULATION	AREA (sq km)
within Noise Limited Contour	1582648	34241.6
not affected by terrain losses	1476781	30524.2
lost to NTSC IX	46253	2053.7
lost to additional IX by ATV	28771	712.3
lost to all IX	75024	2766.0

Analysis of current record

Channel	Call	City/State	Application	Ref. No.
10	WBIQ	BIRMINGHAM AL	BLET	-20040412ACV

Stations Potentially Affecting This Station

Chan	Call	City/State	Dist(km)	Status	Application	Ref. No.
09	WJSU-TV	ANNISTON AL	38.5	LIC	BPRM	-20030127AEY
09	WJSU-TV	ANNISTON AL	38.5	CP MOD	BMPCDT	-20040609ABL
09	WTVA	TUPELO MS	213.9	LIC	BLCT	-1234
10	WALA-TV	MOBILE AL	324.5	LIC	BLCT	-2347
10	WALB	ALBANY GA	365.5	LIC	BLCT	-2413
10	WXIA-TV	ATLANTA GA	231.1	LIC	BLCDDT	-20040302AAO
10	WXIA-DT	ATLANTA GA	231.1	PLN	DTVPLN	-DTVP0070
10	WMAB-TV	MISSISSIPPI STATE MS	217.9	LIC	BLEDT	-20030326ABX
10	WMAB-DT	MISSISSIPPI STATE MS	217.9	LIC	BPRM	-20010629ACP
10	WBIR-TV	KNOXVILLE TN	383.5	LIC	BLCT	-19800109KE
10	WKNO	MEMPHIS TN	333.2	LIC	BLET	-20031020ABF
10	WSMV-DT	NASHVILLE TN	295.3	PLN	DTVPLN	-DTVP0077
11	WDIQ	DOZIER AL	218.0	LIC	BLEDT	-20031023AAG
11	WDIQ	DOZIER AL	218.0	LIC	BPRM	-20000328AAJ
11	WTOK-TV	MERIDIAN MS	217.8	LIC	BLCT	-2503
10	W68AF D1	TOCCOA GA	340.8	APP	USERRECORD-01	

Proposal causes no interference

#####

Analysis of Interference to Affected Station 9

Analysis of current record

Channel	Call	City/State	Application Ref. No.
10	NEW	DOTHAN AL	BNPTVL -20000818AAN

Stations Potentially Affecting This Station

Chan	Call	City/State	Dist(km)	Status	Application Ref. No.
09	NEW	DOTHAN AL	8.5	APP	BNPTVL -20000828BEG
09	WPGX-RM	PANAMA CITY FL	115.5	LIC	BPRM -20000411AAB
09	WPGX	PANAMA CITY FL	98.1	CP MOD	BMPCDT -20041026AGL
09	WTVM	COLUMBUS GA	130.6	LIC	BLCT -1079
09	WTVM	COLUMBUS GA	130.6	APP	BFRCT -20050815ACC
10	WBIQ	BIRMINGHAM AL	280.0	APP	BFRCT -20050815ACO
10	WBIQ	BIRMINGHAM AL	280.0	LIC	BLET -20040412ACV
10	NEW	DOTHAN AL	0.0	APP	BNPTVL -20000830ADG
10	WALA-TV	MOBILE AL	238.7	LIC	BLCT -2347
10	WJXX	ORANGE PARK FL	382.4	LIC	BLCDT -20041102AEE
10	WJXX-DT	ORANGE PARK FL	367.1	PLN	DTVPLN -DTVP0069
10	W36BU	PANAMA CITY FL	108.5	LIC	BLTVL -20060208AEC
10	WALB	ALBANY GA	145.0	LIC	BLCT -2413
10	WXIA-TV	ATLANTA GA	293.7	LIC	BLCDT -20040302AAO
10	WXIA-DT	ATLANTA GA	293.7	PLN	DTVPLN -DTVP0070
10	W10CV	HATTIESBURG MS	23.8	CP	BNPTVL -20000831BAC
11	WDIQ	DOZIER AL	100.5	LIC	BLEDT -20031023AAG
11	WDIQ	DOZIER AL	100.5	LIC	BPRM -20000328AAJ
11	WFSU-TV	TALLAHASSEE FL	125.4	LIC	BLET -343
10	W68AF D1	TOCCOA GA	416.4	APP	USERRECORD-01

Proposed station is beyond the site to
nearest cell evaluation distance

#####

Analysis of Interference to Affected Station 10

Analysis of current record

Channel	Call	City/State	Application Ref. No.
10	NEW	DOTHAN AL	BNPTVL -20000830ADG

Stations Potentially Affecting This Station

Chan	Call	City/State	Dist(km)	Status	Application Ref. No.
09	NEW	DOTHAN AL	8.5	APP	BNPTVL -20000828BEG
09	WPGX-RM	PANAMA CITY FL	115.5	LIC	BPRM -20000411AAB
09	WPGX	PANAMA CITY FL	98.1	CP MOD	BMPCDT -20041026AGL
09	WTVM	COLUMBUS GA	130.6	LIC	BLCT -1079
09	WTVM	COLUMBUS GA	130.6	APP	BFRCT -20050815ACC
10	WBIQ	BIRMINGHAM AL	280.0	APP	BFRCT -20050815ACO
10	WBIQ	BIRMINGHAM AL	280.0	LIC	BLET -20040412ACV
10	NEW	DOTHAN AL	0.0	APP	BNPTVL -20000818AAN
10	WALA-TV	MOBILE AL	238.7	LIC	BLCT -2347
10	WJXX	ORANGE PARK FL	382.4	LIC	BLCDT -20041102AEE

10	WJXX-DT	ORANGE PARK FL	367.1	PLN	DTVPLN	-DTVP0069
10	NEW	PANAMA CITY FL	118.2	APP	BNPTVL	-20000828BGK
10	NEW	PANAMA CITY FL	121.6	APP	BNPTVL	-20000830BNT
10	W36BU	PANAMA CITY FL	108.5	LIC	BLTVL	-20060208AEC
10	WALB	ALBANY GA	145.0	LIC	BLCT	-2413
10	WXIA-TV	ATLANTA GA	293.7	LIC	BLCDDT	-20040302AAO
10	WXIA-DT	ATLANTA GA	293.7	PLN	DTVPLN	-DTVP0070
10	W10CV	HATTIESBURG MS	23.8	CP	BNPTVL	-20000831BAC
11	WDIQ	DOZIER AL	100.5	LIC	BLEDT	-20031023AAG
11	WDIQ	DOZIER AL	100.5	LIC	BPRM	-20000328AAJ
11	WFSU-TV	TALLAHASSEE FL	125.4	LIC	BLET	-343
10	W68AF D1	TOCCOA GA	416.4	APP	USERRECORD-01	

Proposed station is beyond the site to
nearest cell evaluation distance

#####

Analysis of Interference to Affected Station 11

NTSC Baseline Analysis

Channel	Call	City/State	Application	Ref. No.
10	WALBTB	ALBANY GA	DTVPLN	-NPLN0645

Stations Potentially Affecting This Station

Chan	Call	City/State	Dist(km)	Status	Application	Ref. No.
09	WTVM	COLUMBUS GA	140.3	PLN	DTVPLN	-NPLN0588
10	WBIQ	BIRMINGHAM AL	365.3	PLN	DTVPLN	-NPLN0636
10	WALATV	MOBILE AL	381.7	PLN	DTVPLN	-NPLN0637
10	WJXX-DT	ORANGE PARK FL	241.1	PLN	DTVPLN	-DTVP0069
10	WTSP	ST. PETERSBURG FL	365.5	PLN	DTVPLN	-NPLN0644
10	WXIA-DT	ATLANTA GA	273.2	PLN	DTVPLN	-DTVP0070
11	WFSUTV	TALLAHASSEE FL	129.6	PLN	DTVPLN	-NPLN0705

Results for: 10N GA ALBANY	DTVPLN	NPLN0645	PLN
	POPULATION	AREA (sq km)	
within Noise Limited Contour	594403	28288.9	
not affected by terrain losses	590066	27622.5	
lost to NTSC IX	48054	2085.4	
lost to additional IX by ATV	2510	335.7	
lost to all IX	50564	2421.0	

Analysis of current record

Channel	Call	City/State	Application	Ref. No.
10	WALB	ALBANY GA	BLCT	-2413

Stations Potentially Affecting This Station

Chan	Call	City/State	Dist(km)	Status	Application	Ref. No.
09	WPGX-RM	PANAMA CITY FL	190.4	LIC	BPRM	-20000411AAB
09	WPGX	PANAMA CITY FL	190.4	CP MOD	BMPCDDT	-20041026AGL
09	WTVM	COLUMBUS GA	140.3	LIC	BLCT	-1079
09	WTVM	COLUMBUS GA	140.3	APP	BFRCCCT	-20050815ACC
09	WXGA-TV	WAYCROSS GA	123.0	LIC	BPRM	-20010327AJD

09	WXGA-TV	WAYCROSS GA	123.0	CP MOD	BMPEDT	-20020923ABU
10	WBIQ	BIRMINGHAM AL	365.5	APP	BFR CET	-20050815ACO
10	WBIQ	BIRMINGHAM AL	365.5	LIC	BLET	-20040412ACV
10	WALA-TV	MOBILE AL	381.7	LIC	BLCT	-2347
10	WJXX	ORANGE PARK FL	249.8	LIC	BLC DT	-20041102AEE
10	WJXX-DT	ORANGE PARK FL	241.1	PLN	DTVPLN	-DTVP0069
10	WTSP	ST. PETERSBURG FL	365.5	CP	BPCT	-20041025ADK
10	WXIA-TV	ATLANTA GA	273.2	LIC	BLC DT	-20040302AAO
10	WXIA-DT	ATLANTA GA	273.2	PLN	DTVPLN	-DTVP0070
11	WFSU-TV	TALLAHASSEE FL	129.6	LIC	BLET	-343
10	W68AF D1	TOCCOA GA	367.3	APP	USERRECORD-01	

Proposal causes no interference

#####

Analysis of Interference to Affected Station 12

DTV Baseline Analysis

Channel	Call	City/State	Application	Ref. No.
10	WXIA-DT	ATLANTA GA	DTVPLN	-DTVP0070

Stations Potentially Affecting This Station

Chan	Call	City/State	Dist(km)	Status	Application	Ref. No.
09	WTVM	COLUMBUS GA	164.7	PLN	DTVPLN	-NPLN0588
09	WNTV-DT	GREENVILLE SC	220.0	PLN	DTVPLN	-DTVP0059
09	WTVC	CHATTANOOGA TN	180.4	PLN	DTVPLN	-NPLN0624
10	WBIQ	BIRMINGHAM AL	230.3	PLN	DTVPLN	-NPLN0636
10	WALBT	ALBANY GA	273.2	PLN	DTVPLN	-NPLN0645
10	WIS	COLUMBIA SC	332.2	PLN	DTVPLN	-NPLN0680
10	WBIRTV	KNOXVILLE TN	252.5	PLN	DTVPLN	-NPLN0682
10	WSMV-DT	NASHVILLE TN	351.4	PLN	DTVPLN	-DTVP0077
11	WXIATV	ATLANTA GA	0.0	PLN	DTVPLN	-NPLN0706

Results for: 10A GA ATLANTA DTVPLN DTVP0070 PLN

HAAT 320.0 m, ATVP ERP 15.7 kW

	POPULATION	AREA (sq km)
within Noise Limited Contour	3467399	30038.0
not affected by terrain losses	3385906	27972.6
lost to NTSC IX	47425	1385.8
lost to additional IX by ATVP	13	1.0
lost to ATVP IX only	2862	78.1
lost to all IX	47438	1386.8

NTSC Baseline Analysis

Channel	Call	City/State	Application	Ref. No.
11	WXIATV	ATLANTA GA	DTVPLN	-NPLN0706

Stations Potentially Affecting This Station

Chan	Call	City/State	Dist(km)	Status	Application	Ref. No.
10	WXIA-DT	ATLANTA GA	0.0	PLN	DTVPLN	-DTVP0070
11	WFSUTV	TALLAHASSEE FL	378.7	PLN	DTVPLN	-NPLN0705
11	WT OCTV	SAVANNAH GA	336.5	PLN	DTVPLN	-NPLN0707
11	WJHLTV	JOHNSON CITY TN	358.1	PLN	DTVPLN	-NPLN0741

12 WDEFTV CHATTANOOGA TN 178.1 PLN DTVPLN -NPLN0795

Results for: 11N GA ATLANTA DTVPLN NPLN0706 PLN
 POPULATION AREA (sq km)
 within Noise Limited Contour 3465897 30015.2
 not affected by terrain losses 3354720 27087.3
 lost to NTSC IX 24837 1138.5
 lost to additional IX by ATV 0 0.0
 lost to all IX 24837 1138.5

Analysis of current record

Channel	Call	City/State	Application	Ref. No.
10	WXIA-TV	ATLANTA GA	BLCDT	-20040302AAO

Stations Potentially Affecting This Station

Chan	Call	City/State	Dist(km)	Status	Application	Ref. No.
09	WJSU-TV	ANNISTON AL	193.6	LIC	BPRM	-20030127AEY
09	WJSU-TV	ANNISTON AL	193.6	CP MOD	BMPCDT	-20040609ABL
09	WTVM	COLUMBUS GA	164.7	LIC	BLCT	-1079
09	WTVM	COLUMBUS GA	164.7	APP	BFRCT	-20050815ACC
09	WNTV	GREENVILLE SC	220.1	LIC	BLEDT	-20041123AKQ
09	WNTV-DT	GREENVILLE SC	220.0	PLN	DTVPLN	-DTVP0059
09	WTVG	CHATTANOOGA TN	180.3	LIC	BLCT	-20021031ABE
10	WBIQ	BIRMINGHAM AL	231.1	APP	BFRCT	-20050815ACO
10	WBIQ	BIRMINGHAM AL	231.1	LIC	BLET	-20040412ACV
10	WALB	ALBANY GA	273.2	LIC	BLCT	-2413
10	WIS	COLUMBIA SC	332.2	LIC	BLCT	-20030210ABB
10	WIS	COLUMBIA SC	332.2	APP	BPCT	-20000501AEZ
10	WBIR-TV	KNOXVILLE TN	252.5	LIC	BLCT	-19800109KE
10	WSMV-DT	NASHVILLE TN	351.4	PLN	DTVPLN	-DTVP0077
11	WXIA-TV	ATLANTA GA	0.0	LIC	BMLCT	-19960208KF
10	W68AF D1	TOCCOA GA	130.0	APP	USERRECORD-01	

Total scenarios = 5

Result key: 3

Scenario 1 Affected station 12
 Before Analysis

Results for: 10A GA ATLANTA BLCDT 20040302AAO LIC
 HAAT 303.0 m, ATV ERP 80.0 kW
 POPULATION AREA (sq km)
 within Noise Limited Contour 3671007 38414.0
 not affected by terrain losses 3595913 35391.2
 lost to NTSC IX 79239 2133.6
 lost to additional IX by ATV 0 5.9
 lost to ATV IX only 5734 112.8
 lost to all IX 79239 2139.6

Potential Interfering Stations Included in above Scenario 1

9N GA COLUMBUS	BLCT	1079	LIC
10N AL BIRMINGHAM	BLET	20040412ACV	LIC
10N GA ALBANY	BLCT	2413	LIC
10N SC COLUMBIA	BLCT	20030210ABB	LIC

10N TN KNOXVILLE	BLCT	19800109KE	LIC
10A TN NASHVILLE	DTVPLN	DTVP0077	PLN

After Analysis

Results for: 10A GA ATLANTA BLC DT 20040302AAO LIC

HAAT 303.0 m, ATV ERP 80.0 kW

	POPULATION	AREA (sq km)
within Noise Limited Contour	3671007	38414.0
not affected by terrain losses	3595913	35391.2
lost to NTSC IX	79239	2133.6
lost to additional IX by ATV	7142	253.2
lost to ATV IX only	16195	496.6
lost to all IX	86381	2386.8

Potential Interfering Stations Included in above Scenario 1

9N GA COLUMBUS	BLCT	1079	LIC
10N AL BIRMINGHAM	BLET	20040412ACV	LIC
10N GA ALBANY	BLCT	2413	LIC
10N SC COLUMBIA	BLCT	20030210ABB	LIC
10N TN KNOXVILLE	BLCT	19800109KE	LIC
10A TN NASHVILLE	DTVPLN	DTVP0077	PLN
10A GA TOCCOA	USERRECORD01		APP
*Percent Service lost without proposal:	-5.3	to BLC DT	20040302AAO
*Percent Service lost with proposal:	-5.1	to BLC DT	20040302AAO

Result key: 4
Scenario 2 Affected station 12
Before Analysis

Results for: 10A GA ATLANTA BLC DT 20040302AAO LIC

HAAT 303.0 m, ATV ERP 80.0 kW

	POPULATION	AREA (sq km)
within Noise Limited Contour	3671007	38414.0
not affected by terrain losses	3595913	35391.2
lost to NTSC IX	79239	2133.6
lost to additional IX by ATV	0	5.9
lost to ATV IX only	9508	305.7
lost to all IX	79239	2139.6

Potential Interfering Stations Included in above Scenario 2

9N GA COLUMBUS	BLCT	1079	LIC
10N AL BIRMINGHAM	BLET	20040412ACV	LIC
10N GA ALBANY	BLCT	2413	LIC
10N SC COLUMBIA	BLCT	20030210ABB	LIC
10N TN KNOXVILLE	BLCT	19800109KE	LIC
10A AL BIRMINGHAM	BFR CET	20050815ACO	APP
10A TN NASHVILLE	DTVPLN	DTVP0077	PLN

After Analysis

Results for: 10A GA ATLANTA BLC DT 20040302AAO LIC

HAAT 303.0 m, ATV ERP 80.0 kW

	POPULATION	AREA (sq km)
--	------------	--------------

within Noise Limited Contour	3671007	38414.0
not affected by terrain losses	3595913	35391.2
lost to NTSC IX	79239	2133.6
lost to additional IX by ATV	7142	253.2
lost to ATV IX only	19969	689.4
lost to all IX	86381	2386.8

Potential Interfering Stations Included in above Scenario 2

9N GA COLUMBUS	BLCT	1079	LIC
10N AL BIRMINGHAM	BLET	20040412ACV	LIC
10N GA ALBANY	BLCT	2413	LIC
10N SC COLUMBIA	BLCT	20030210ABB	LIC
10N TN KNOXVILLE	BLCT	19800109KE	LIC
10A AL BIRMINGHAM	BFR CET	20050815ACO	APP
10A TN NASHVILLE	DTVPLN	DTVP0077	PLN
10A GA TOCCOA	USERRECORD01		APP
*Percent Service lost without proposal:	-5.3	to BLC DT	20040302AAO
*Percent Service lost with proposal:	-5.1	to BLC DT	20040302AAO

Result key: 5
 Scenario 3 Affected station 12
 Before Analysis

Results for: 10A GA ATLANTA BLC DT 20040302AAO LIC
 HAAT 303.0 m, ATV ERP 80.0 kW

	POPULATION	AREA (sq km)
within Noise Limited Contour	3671007	38414.0
not affected by terrain losses	3595913	35391.2
lost to NTSC IX	79239	2133.6
lost to additional IX by ATV	0	5.9
lost to ATV IX only	5734	112.8
lost to all IX	79239	2139.6

Potential Interfering Stations Included in above Scenario 3

9N GA COLUMBUS	BLCT	1079	LIC
10N AL BIRMINGHAM	BLET	20040412ACV	LIC
10N GA ALBANY	BLCT	2413	LIC
10N SC COLUMBIA	BLCT	20030210ABB	LIC
10N TN KNOXVILLE	BLCT	19800109KE	LIC
10A TN NASHVILLE	DTVPLN	DTVP0077	PLN

After Analysis

Results for: 10A GA ATLANTA BLC DT 20040302AAO LIC
 HAAT 303.0 m, ATV ERP 80.0 kW

	POPULATION	AREA (sq km)
within Noise Limited Contour	3671007	38414.0
not affected by terrain losses	3595913	35391.2
lost to NTSC IX	79239	2133.6
lost to additional IX by ATV	7142	253.2
lost to ATV IX only	16195	496.6
lost to all IX	86381	2386.8

Potential Interfering Stations Included in above Scenario 3

9N GA COLUMBUS	BLCT	1079	LIC	
10N AL BIRMINGHAM	BLET	20040412ACV	LIC	
10N GA ALBANY	BLCT	2413	LIC	
10N SC COLUMBIA	BLCT	20030210ABB	LIC	
10N TN KNOXVILLE	BLCT	19800109KE	LIC	
10A TN NASHVILLE	DTVPLN	DTVP0077	PLN	
10A GA TOCCOA	USERRECORD01		APP	
*Percent Service lost without proposal:		-5.3	to BLCDT	20040302AAO
*Percent Service lost with proposal:		-5.1	to BLCDT	20040302AAO

Result key: 6
 Scenario 4 Affected station 12
 Before Analysis

Results for: 10A GA ATLANTA BLCDT 20040302AAO LIC
 HAAT 303.0 m, ATV ERP 80.0 kW

	POPULATION	AREA (sq km)
within Noise Limited Contour	3671007	38414.0
not affected by terrain losses	3595913	35391.2
lost to NTSC IX	79239	2133.6
lost to additional IX by ATV	0	5.9
lost to ATV IX only	9508	305.7
lost to all IX	79239	2139.6

Potential Interfering Stations Included in above Scenario 4

9N GA COLUMBUS	BLCT	1079	LIC
10N AL BIRMINGHAM	BLET	20040412ACV	LIC
10N GA ALBANY	BLCT	2413	LIC
10N SC COLUMBIA	BPCT	20000501AEZ	APP
10N TN KNOXVILLE	BLCT	19800109KE	LIC
10A AL BIRMINGHAM	BFR CET	20050815ACO	APP
10A TN NASHVILLE	DTVPLN	DTVP0077	PLN

After Analysis

Results for: 10A GA ATLANTA BLCDT 20040302AAO LIC
 HAAT 303.0 m, ATV ERP 80.0 kW

	POPULATION	AREA (sq km)
within Noise Limited Contour	3671007	38414.0
not affected by terrain losses	3595913	35391.2
lost to NTSC IX	79239	2133.6
lost to additional IX by ATV	7142	253.2
lost to ATV IX only	19969	689.4
lost to all IX	86381	2386.8

Potential Interfering Stations Included in above Scenario 4

9N GA COLUMBUS	BLCT	1079	LIC
10N AL BIRMINGHAM	BLET	20040412ACV	LIC
10N GA ALBANY	BLCT	2413	LIC
10N SC COLUMBIA	BPCT	20000501AEZ	APP
10N TN KNOXVILLE	BLCT	19800109KE	LIC
10A AL BIRMINGHAM	BFR CET	20050815ACO	APP
10A TN NASHVILLE	DTVPLN	DTVP0077	PLN

10A GA TOCCOA USERRECORD01 APP
 *Percent Service lost without proposal: -5.3 to BLCDT 20040302AAO
 *Percent Service lost with proposal: -5.1 to BLCDT 20040302AAO

Result key: 7
 Scenario 5 Affected station 12
 Before Analysis

Results for: 10A GA ATLANTA BLCDT 20040302AAO LIC
 HAAT 303.0 m, ATV ERP 80.0 kW

	POPULATION	AREA (sq km)
within Noise Limited Contour	3671007	38414.0
not affected by terrain losses	3595913	35391.2
lost to NTSC IX	79239	2133.6
lost to additional IX by ATV	0	5.9
lost to ATV IX only	5734	112.8
lost to all IX	79239	2139.6

Potential Interfering Stations Included in above Scenario 5

9N GA COLUMBUS	BLCT	1079	LIC
10N AL BIRMINGHAM	BLET	20040412ACV	LIC
10N GA ALBANY	BLCT	2413	LIC
10N SC COLUMBIA	BPCT	20000501AEZ	APP
10N TN KNOXVILLE	BLCT	19800109KE	LIC
10A TN NASHVILLE	DTVPLN	DTVP0077	PLN

After Analysis

Results for: 10A GA ATLANTA BLCDT 20040302AAO LIC
 HAAT 303.0 m, ATV ERP 80.0 kW

	POPULATION	AREA (sq km)
within Noise Limited Contour	3671007	38414.0
not affected by terrain losses	3595913	35391.2
lost to NTSC IX	79239	2133.6
lost to additional IX by ATV	7142	253.2
lost to ATV IX only	16195	496.6
lost to all IX	86381	2386.8

Potential Interfering Stations Included in above Scenario 5

9N GA COLUMBUS	BLCT	1079	LIC
10N AL BIRMINGHAM	BLET	20040412ACV	LIC
10N GA ALBANY	BLCT	2413	LIC
10N SC COLUMBIA	BPCT	20000501AEZ	APP
10N TN KNOXVILLE	BLCT	19800109KE	LIC
10A TN NASHVILLE	DTVPLN	DTVP0077	PLN
10A GA TOCCOA	USERRECORD01		APP
*Percent Service lost without proposal:	-5.3	to BLCDT	20040302AAO
*Percent Service lost with proposal:	-5.1	to BLCDT	20040302AAO

#####

Analysis of Interference to Affected Station 13

Analysis of current record

Channel	Call	City/State	Application	Ref. No.
10	W10AQ	YOUNG HARRIS GA	BLTTV	-4061

Stations Potentially Affecting This Station

Chan	Call	City/State	Dist(km)	Status	Application	Ref. No.
09	W09AG	FRANKLIN NC	40.2	LIC	BLTTV	-19801112IF
09	WTVC	CHATTANOOGA TN	129.9	LIC	BLCT	-20021031ABE
10	WBIQ	BIRMINGHAM AL	310.9	APP	BFR CET	-20050815ACO
10	WBIQ	BIRMINGHAM AL	310.9	LIC	BLET	-20040412ACV
10	WXIA-TV	ATLANTA GA	136.7	LIC	BLC DT	-20040302AAO
10	WXIA-DT	ATLANTA GA	136.7	PLN	DTVPLN	-DTVP0070
10	W10AL	CHEROKEE, ETC. NC	80.8	LIC	BLTTV	-3607
10	W10AD	MONTREAT, ETC. NC	161.9	LIC	BLTTV	-19790820IE
10	WIS	COLUMBIA SC	303.2	LIC	BLCT	-20030210ABB
10	WIS	COLUMBIA SC	303.2	APP	BPCT	-20000501AEZ
10	W10AJ	GREENVILLE SC	136.6	LIC	BLTTV	-3015
10	WBIR-TV	KNOXVILLE TN	118.6	LIC	BLCT	-19800109KE
10	WSMV-DT	NASHVILLE TN	298.3	PLN	DTVPLN	-DTVP0077
11	W11AQ	ROBBINSVILLE, ETC. NC	37.1	LIC	BLTTV	-19821008IB
10	W68AF D1	TOCCOA GA	62.4	APP	USERRECORD-01	

Proposal causes no interference

#####

Analysis of Interference to Affected Station 14

Analysis of current record

Channel	Call	City/State	Application	Ref. No.
10	WBLU-LP	LEXINGTON KY	BPTVL	-20041208AAW

Stations Potentially Affecting This Station

Chan	Call	City/State	Dist(km)	Status	Application	Ref. No.
09	WCPO-TV	CINCINNATI OH	119.8	LIC	BMLCT	-19830302KF
10	WTHI-TV	TERRE HAUTE IN	283.6	LIC	BLCT	-1464
10	WCPO-DT	CINCINNATI OH	119.8	PLN	DTVPLN	-DTVP0075
10	WBNS-TV	COLUMBUS OH	248.7	LIC	BLCT	-19820708KF
10	WBIR-TV	KNOXVILLE TN	232.4	LIC	BLCT	-19800109KE
10	WSMV-DT	NASHVILLE TN	298.2	PLN	DTVPLN	-DTVP0077
10	WVFX	CLARKSBURG WV	386.5	CP MOD	BMPCDT	-20020930AAV
10	WVFX	CLARKSBURG WV	386.5	LIC	BPRM	-20000328AAA
11	WHAS-TV	LOUISVILLE KY	122.7	LIC	BLCT	-19820811KF
10	W68AF D1	TOCCOA GA	395.5	APP	USERRECORD-01	

Proposed station is beyond the site to nearest cell evaluation distance

#####

Analysis of Interference to Affected Station 15

Analysis of current record

Channel	Call	City/State	Application Ref. No.
10	W10AR	LOUISA KY	BLTTV -3958

Stations Potentially Affecting This Station

Chan	Call	City/State	Dist(km)	Status	Application Ref. No.
10	WBLU-LP	LEXINGTON KY	165.5	CP	BPTVL -20041208AAW
10	WCPO-DT	CINCINNATI OH	199.1	PLN	DTVPLN -DTVP0075
10	WBNS-TV	COLUMBUS OH	210.0	LIC	BLCT -19820708KF
10	WOIO	SHAKER HEIGHTS OH	372.6	LIC	BLCDT -19991110AAR
10	WOIO-DT	SHAKER HEIGHTS OH	372.6	PLN	DTVPLN -DTVP0076
10	WBIR-TV	KNOXVILLE TN	262.0	LIC	BLCT -19800109KE
10	WSLS-TV	ROANOKE VA	239.0	LIC	BLCT -19990813LD
10	WVFX	CLARKSBURG WV	236.9	CP MOD	BMPCDT -20020930AAV
10	WVFX	CLARKSBURG WV	236.9	LIC	BPRM -20000328AAA
11	WVAH-TV	CHARLESTON WV	70.0	CP	BPCT -20030728ADD
10	W68AF D1	TOCCOA GA	395.0	APP	USERRECORD-01

Proposed station is beyond the site to
nearest cell evaluation distance

#####

Analysis of Interference to Affected Station 16

Analysis of current record

Channel	Call	City/State	Application Ref. No.
10	W10CV	HATTIESBURG MS	BNPTVL -20000831BAC

Stations Potentially Affecting This Station

Chan	Call	City/State	Dist(km)	Status	Application Ref. No.
09	NEW	DOTHAN AL	23.5	APP	BNPTVL -20000828BEG
09	WPGX-RM	PANAMA CITY FL	125.6	LIC	BPRM -20000411AAB
09	WPGX	PANAMA CITY FL	105.6	CP MOD	BMPCDT -20041026AGL
10	WBIQ	BIRMINGHAM AL	262.8	APP	BFRCT -20050815ACO
10	WBIQ	BIRMINGHAM AL	262.8	LIC	BLET -20040412ACV
10	NEW	DOTHAN AL	23.8	APP	BNPTVL -20000818AAN
10	NEW	DOTHAN AL	23.8	APP	BNPTVL -20000830ADG
10	WALA-TV	MOBILE AL	219.7	LIC	BLCT -2347
10	WJXX-DT	ORANGE PARK FL	390.9	PLN	DTVPLN -DTVP0069
10	NEW	PANAMA CITY FL	124.1	APP	BNPTVL -20000828BGK
10	NEW	PANAMA CITY FL	127.5	APP	BNPTVL -20000830BNT
10	W36BU	PANAMA CITY FL	112.8	LIC	BLTVL -20060208AEC
10	WALB	ALBANY GA	167.1	LIC	BLCT -2413
10	WXIA-TV	ATLANTA GA	294.4	LIC	BLCDT -20040302AAO
10	WXIA-DT	ATLANTA GA	294.4	PLN	DTVPLN -DTVP0070
11	WDIQ	DOZIER AL	76.7	LIC	BLEDT -20031023AAG
11	WDIQ	DOZIER AL	76.7	LIC	BPRM -20000328AAJ
10	W68AF D1	TOCCOA GA	419.7	APP	USERRECORD-01

Proposed station is beyond the site to

nearest cell evaluation distance

#####

Analysis of Interference to Affected Station 17

Analysis of current record

Channel	Call	City/State	Application	Ref. No.
10	W10AL	CHEROKEE, ETC. NC	BLTTV	-3607

Stations Potentially Affecting This Station

Chan	Call	City/State	Dist(km)	Status	Application	Ref. No.
09	W09AG	FRANKLIN NC	41.6	LIC	BLTTV	-19801112IF
09	W09AF	SYLVA, ETC. NC	16.8	LIC	BLTTV	-19781113IO
09	W09AD	WAYNESVILLE NC	26.9	LIC	BLTTV	-3897
09	WNTV	GREENVILLE SC	103.5	LIC	BLEDT	-20041123AKQ
09	WNTV-DT	GREENVILLE SC	103.6	PLN	DTVPLN	-DTVP0059
10	WBIQ	BIRMINGHAM AL	388.3	APP	BFCET	-20050815ACO
10	WBIQ	BIRMINGHAM AL	388.3	LIC	BLET	-20040412ACV
10	WXIA-TV	ATLANTA GA	212.9	LIC	BLCDDT	-20040302AAO
10	WXIA-DT	ATLANTA GA	212.9	PLN	DTVPLN	-DTVP0070
10	W10AQ	YOUNG HARRIS GA	80.8	LIC	BLTTV	-4061
10	W10AP	MARION, ETC. NC	121.7	LIC	BLTTV	-19800428IN
10	W10AD	MONTREAT, ETC. NC	90.7	LIC	BLTTV	-19790820IE
10	W10AK	SPRUCE PINE NC	119.3	LIC	BLTTV	-2068
10	WIS	COLUMBIA SC	279.8	LIC	BLCT	-20030210ABB
10	WIS	COLUMBIA SC	279.8	APP	BPCT	-20000501AEZ
10	W10AJ	GREENVILLE SC	102.9	LIC	BLTTV	-3015
10	WBIR-TV	KNOXVILLE TN	79.4	LIC	BLCT	-19800109KE
10	WSMV-DT	NASHVILLE TN	326.5	PLN	DTVPLN	-DTVP0077
10	WSLS-TV	ROANOKE VA	342.9	LIC	BLCT	-19990813LD
11	W11AN	BRYSON CITY, ETC. NC	13.9	LIC	BLTTV	-4960
10	W68AF D1	TOCCOA GA	97.7	APP	USERRECORD-01	

Proposal causes no interference

#####

Analysis of Interference to Affected Station 18

Analysis of current record

Channel	Call	City/State	Application	Ref. No.
10	W10AP	MARION, ETC. NC	BLTTV	-19800428IN

Stations Potentially Affecting This Station

Chan	Call	City/State	Dist(km)	Status	Application	Ref. No.
09	WSOC-TV	CHARLOTTE NC	124.4	LIC	BLCT	-20000726AAR
09	WNTV	GREENVILLE SC	88.8	LIC	BLEDT	-20041123AKQ
09	WNTV-DT	GREENVILLE SC	88.9	PLN	DTVPLN	-DTVP0059
10	WXIA-TV	ATLANTA GA	300.5	LIC	BLCDDT	-20040302AAO
10	WXIA-DT	ATLANTA GA	300.5	PLN	DTVPLN	-DTVP0070
10	W10AL	CHEROKEE, ETC. NC	121.7	LIC	BLTTV	-3607

10	W10AD	MONTREAT, ETC. NC	31.0	LIC	BLTTV	-19790820IE
10	W10AK	SPRUCE PINE NC	25.0	LIC	BLTTV	-2068
10	WIS	COLUMBIA SC	206.1	LIC	BLCT	-20030210ABB
10	WIS	COLUMBIA SC	206.1	APP	BPCT	-20000501AEZ
10	W10AJ	GREENVILLE SC	89.1	LIC	BLTTV	-3015
10	WBIR-TV	KNOXVILLE TN	178.1	LIC	BLCT	-19800109KE
10	WSLS-TV	ROANOKE VA	237.9	LIC	BLCT	-19990813LD
11	WTVI	CHARLOTTE NC	126.0	LIC	BMLEDT	-20030428AAT
11	WTVI-DR	CHARLOTTE NC	126.0	LIC	BPRM	-20000411AAG
11	WJHL-TV	JOHNSON CITY TN	85.6	LIC	BLCT	-2111
10	W68AF D1	TOCCOA GA	170.6	APP	USERRECORD-01	

Proposal causes no interference

#####

Analysis of Interference to Affected Station 19

Analysis of current record

Channel	Call	City/State	Application	Ref. No.
10	W10AD	MONTREAT, ETC. NC	BLTTV	-19790820IE

Stations Potentially Affecting This Station

Chan	Call	City/State	Dist(km)	Status	Application	Ref. No.
09	W09AR	WEAVERVILLE NC	20.9	LIC	BLTTV	-19790607IA
09	WNTV	GREENVILLE SC	76.6	LIC	BLEDT	-20041123AKQ
09	WNTV-DT	GREENVILLE SC	76.7	PLN	DTVPLN	-DTVP0059
10	WXIA-TV	ATLANTA GA	276.1	LIC	BLCDT	-20040302AAO
10	WXIA-DT	ATLANTA GA	276.1	PLN	DTVPLN	-DTVP0070
10	W10AQ	YOUNG HARRIS GA	161.9	LIC	BLTTV	-4061
10	W10AL	CHEROKEE, ETC. NC	90.7	LIC	BLTTV	-3607
10	W10AP	MARION, ETC. NC	31.0	LIC	BLTTV	-19800428IN
10	W10AK	SPRUCE PINE NC	35.5	LIC	BLTTV	-2068
10	WIS	COLUMBIA SC	221.3	LIC	BLCT	-20030210ABB
10	WIS	COLUMBIA SC	221.3	APP	BPCT	-20000501AEZ
10	W10AJ	GREENVILLE SC	76.7	LIC	BLTTV	-3015
10	WBIR-TV	KNOXVILLE TN	149.6	LIC	BLCT	-19800109KE
10	WSLS-TV	ROANOKE VA	263.0	LIC	BLCT	-19990813LD
11	W11AX	BAT CAVE, ETC. NC	23.5	LIC	BLTTV	-19800501IB
11	WJHL-TV	JOHNSON CITY TN	91.2	LIC	BLCT	-2111
10	W68AF D1	TOCCOA GA	146.4	APP	USERRECORD-01	

Proposal causes no interference

#####

Analysis of Interference to Affected Station 20

Analysis of current record

Channel	Call	City/State	Application	Ref. No.
10	W10AK	SPRUCE PINE NC	BLTTV	-2068

Stations Potentially Affecting This Station

Chan	Call	City/State	Dist(km)	Status	Application	Ref. No.
09	WNTV	GREENVILLE SC	108.0	LIC	BLEDT	-20041123AKQ
09	WNTV-DT	GREENVILLE SC	108.1	PLN	DTVPLN	-DTVP0059
09	WOPI-CA	KINGSPORT TN	61.4	CP	BPTVA	-20030910ACT
09	WOPI-CA	KINGSPORT TN	61.4	APP	BMPTVA	-20050314AKH
09	WOPI-CA	BRISTOL VA	61.4	LIC	BLTVA	-20021211AAB
10	WXIA-TV	ATLANTA GA	311.5	LIC	BLCDDT	-20040302AAO
10	WXIA-DT	ATLANTA GA	311.5	PLN	DTVPLN	-DTVP0070
10	W10AL	CHEROKEE, ETC. NC	119.3	LIC	BLTTV	-3607
10	W10AP	MARION, ETC. NC	25.0	LIC	BLTTV	-19800428IN
10	W10AD	MONTREAT, ETC. NC	35.5	LIC	BLTTV	-19790820IE
10	WIS	COLUMBIA SC	230.5	LIC	BLCT	-20030210ABB
10	WIS	COLUMBIA SC	230.5	APP	BPCT	-20000501AEZ
10	W10AJ	GREENVILLE SC	108.1	LIC	BLTTV	-3015
10	WBIR-TV	KNOXVILLE TN	165.8	LIC	BLCT	-19800109KE
10	WSLS-TV	ROANOKE VA	228.1	LIC	BLCT	-19990813LD
11	WJHL-TV	JOHNSON CITY TN	61.4	LIC	BLCT	-2111
10	W68AF D1	TOCCOA GA	181.8	APP	USERRECORD-01	

Proposal causes no interference

#####

Analysis of Interference to Affected Station 21

NTSC Baseline Analysis

Channel	Call	City/State	Application	Ref. No.
10	WIS	COLUMBIA SC	DTVPLN	-NPLN0680

Stations Potentially Affecting This Station

Chan	Call	City/State	Dist(km)	Status	Application	Ref. No.
09	WSOCTV	CHARLOTTE NC	126.4	PLN	DTVPLN	-NPLN0608
09	WNTV-DT	GREENVILLE SC	176.5	PLN	DTVPLN	-DTVP0059
10	WXIA-DT	ATLANTA GA	332.2	PLN	DTVPLN	-DTVP0070
10	WNCT-DT	GREENVILLE NC	336.7	PLN	DTVPLN	-DTVP0073
10	WBIRTV	KNOXVILLE TN	357.1	PLN	DTVPLN	-NPLN0682
10	WSLSTV	ROANOKE VA	346.3	PLN	DTVPLN	-NPLN0689

Results for: 10N SC COLUMBIA		DTVPLN	NPLN0680	PLN
	POPULATION	AREA (sq km)		
within Noise Limited Contour	1499413	38285.6		
not affected by terrain losses	1446386	37015.1		
lost to NTSC IX	222460	3594.7		
lost to additional IX by ATV	4938	300.4		
lost to all IX	227398	3895.0		

Analysis of current record

Channel	Call	City/State	Application	Ref. No.
10	WIS	COLUMBIA SC	BLCT	-20030210ABB

Stations Potentially Affecting This Station

Chan	Call	City/State	Dist(km)	Status	Application	Ref. No.
09	WSOC-TV	CHARLOTTE NC	126.4	LIC	BLCT	-20000726AAR
09	WHMC-TV	CONWAY SC	153.0	LIC	BPRM	-20030318AIM

09	WHMC	CONWAY SC	153.0	LIC	BLEDT	-20050830ACK
09	WNTV	GREENVILLE SC	176.6	LIC	BLEDT	-20041123AKQ
09	WNTV-DT	GREENVILLE SC	176.5	PLN	DTVPLN	-DTVP0059
10	WXIA-TV	ATLANTA GA	332.2	LIC	BLCDDT	-20040302AAO
10	WXIA-DT	ATLANTA GA	332.2	PLN	DTVPLN	-DTVP0070
10	WNCT-DT	GREENVILLE NC	336.6	PLN	DTVPLN	-DTVP0073
10	WNCT-TV	GREENVILLE NC	336.6	CP MOD	BMPCDDT	-20040730ARH
10	WBIR-TV	KNOXVILLE TN	357.1	LIC	BLCT	-19800109KE
10	WSLS-TV	ROANOKE VA	346.3	LIC	BLCT	-19990813LD
11	WTVI	CHARLOTTE NC	129.3	LIC	BMLEDT	-20030428AAT
11	WTVI-DR	CHARLOTTE NC	129.3	LIC	BPRM	-20000411AAG
10	W68AF D1	TOCCOA GA	245.2	APP	USERRECORD-01	

Proposal causes no interference

#####

Analysis of Interference to Affected Station 22

Analysis of current record

Channel	Call	City/State	Application	Ref. No.
10	WIS	COLUMBIA SC	BPCT	-20000501AEZ

Stations Potentially Affecting This Station

Chan	Call	City/State	Dist(km)	Status	Application	Ref. No.
09	WSOC-TV	CHARLOTTE NC	126.4	LIC	BLCT	-20000726AAR
09	WHMC-TV	CONWAY SC	153.0	LIC	BPRM	-20030318AIM
09	WHMC	CONWAY SC	153.0	LIC	BLEDT	-20050830ACK
09	WNTV	GREENVILLE SC	176.6	LIC	BLEDT	-20041123AKQ
09	WNTV-DT	GREENVILLE SC	176.5	PLN	DTVPLN	-DTVP0059
10	WXIA-TV	ATLANTA GA	332.2	LIC	BLCDDT	-20040302AAO
10	WXIA-DT	ATLANTA GA	332.2	PLN	DTVPLN	-DTVP0070
10	WNCT-DT	GREENVILLE NC	336.6	PLN	DTVPLN	-DTVP0073
10	WNCT-TV	GREENVILLE NC	336.6	CP MOD	BMPCDDT	-20040730ARH
10	WBIR-TV	KNOXVILLE TN	357.1	LIC	BLCT	-19800109KE
10	WSLS-TV	ROANOKE VA	346.3	LIC	BLCT	-19990813LD
11	WTVI	CHARLOTTE NC	129.3	LIC	BMLEDT	-20030428AAT
11	WTVI-DR	CHARLOTTE NC	129.3	LIC	BPRM	-20000411AAG
10	W68AF D1	TOCCOA GA	245.2	APP	USERRECORD-01	

Proposal causes no interference

#####

Analysis of Interference to Affected Station 23

Analysis of current record

Channel	Call	City/State	Application	Ref. No.
10	W10AJ	GREENVILLE SC	BLTTV	-3015

Stations Potentially Affecting This Station

Chan	Call	City/State	Dist(km)	Status	Application	Ref. No.
09	WNTV	GREENVILLE SC	0.7	LIC	BLEDT	-20041123AKQ

09	WNTV-DT	GREENVILLE SC	0.7	PLN	DTVPLN	-DTVP0059
10	WXIA-TV	ATLANTA GA	219.5	LIC	BLCDDT	-20040302AAO
10	WXIA-DT	ATLANTA GA	219.5	PLN	DTVPLN	-DTVP0070
10	W10AQ	YOUNG HARRIS GA	136.6	LIC	BLTTV	-4061
10	W10AL	CHEROKEE, ETC. NC	102.9	LIC	BLTTV	-3607
10	W10AP	MARION, ETC. NC	89.1	LIC	BLTTV	-19800428IN
10	W10AD	MONTREAT, ETC. NC	76.7	LIC	BLTTV	-19790820IE
10	W10AK	SPRUCE PINE NC	108.1	LIC	BLTTV	-2068
10	WIS	COLUMBIA SC	177.2	LIC	BLCT	-20030210ABB
10	WIS	COLUMBIA SC	177.2	APP	BPCT	-20000501AEZ
10	WBIR-TV	KNOXVILLE TN	181.5	LIC	BLCT	-19800109KE
10	WLSL-TV	ROANOKE VA	323.4	LIC	BLCT	-19990813LD
10	W68AF D1	TOCCOA GA	94.0	APP	USERRECORD-01	

Total scenarios = 8

Result key: 8
 Scenario 1 Affected station 23
 Before Analysis

Results for: 10N SC GREENVILLE	BLTTV	3015	LIC
	POPULATION	AREA (sq km)	
within Noise Limited Contour	6208	19.0	
not affected by terrain losses	6208	18.0	
lost to NTSC IX	2063	7.0	
lost to additional IX by ATV	4145	11.0	
lost to all IX	6208	18.0	

Potential Interfering Stations Included in above Scenario 1

10N SC COLUMBIA	BLCT	20030210ABB	LIC
9A SC GREENVILLE	BLEDT	20041123AKQ	LIC
10A GA ATLANTA	BLCDDT	20040302AAO	LIC

After Analysis

Results for: 10N SC GREENVILLE	BLTTV	3015	LIC
	POPULATION	AREA (sq km)	
within Noise Limited Contour	6208	19.0	
not affected by terrain losses	6208	18.0	
lost to NTSC IX	2063	7.0	
lost to additional IX by ATV	4145	11.0	
lost to all IX	6208	18.0	

Potential Interfering Stations Included in above Scenario 1

10N SC COLUMBIA	BLCT	20030210ABB	LIC
9A SC GREENVILLE	BLEDT	20041123AKQ	LIC
10A GA ATLANTA	BLCDDT	20040302AAO	LIC
10A GA TOCCOA	USERRECORD01	APP	
*Percent new DTV interference without proposal:	100.0	BLTTV	3015
*Percent new DTV interference with proposal:	100.0	BLTTV	3015

Result key: 9
 Scenario 2 Affected station 23

Before Analysis

Results for: 10N SC GREENVILLE	BLTTV	3015	LIC
	POPULATION	AREA (sq km)	
within Noise Limited Contour	6208	19.0	
not affected by terrain losses	6208	18.0	
lost to NTSC IX	2063	7.0	
lost to additional IX by ATV	4145	11.0	
lost to all IX	6208	18.0	

Potential Interfering Stations Included in above Scenario 2

10N SC COLUMBIA	BLCT	20030210ABB	LIC
9A SC GREENVILLE	BLEDT	20041123AKQ	LIC
10A GA ATLANTA	DTVPLN	DTVP0070	PLN

After Analysis

Results for: 10N SC GREENVILLE	BLTTV	3015	LIC
	POPULATION	AREA (sq km)	
within Noise Limited Contour	6208	19.0	
not affected by terrain losses	6208	18.0	
lost to NTSC IX	2063	7.0	
lost to additional IX by ATV	4145	11.0	
lost to all IX	6208	18.0	

Potential Interfering Stations Included in above Scenario 2

10N SC COLUMBIA	BLCT	20030210ABB	LIC
9A SC GREENVILLE	BLEDT	20041123AKQ	LIC
10A GA ATLANTA	DTVPLN	DTVP0070	PLN
10A GA TOCCOA	USERRECORD01		APP
*Percent new DTV interference without proposal:		100.0	BLTTV 3015
*Percent new DTV interference with proposal:		100.0	BLTTV 3015

Result key: 10
Scenario 3 Affected station 23
Before Analysis

Results for: 10N SC GREENVILLE	BLTTV	3015	LIC
	POPULATION	AREA (sq km)	
within Noise Limited Contour	6208	19.0	
not affected by terrain losses	6208	18.0	
lost to NTSC IX	2063	7.0	
lost to additional IX by ATV	4145	11.0	
lost to all IX	6208	18.0	

Potential Interfering Stations Included in above Scenario 3

10N SC COLUMBIA	BLCT	20030210ABB	LIC
9A SC GREENVILLE	DTVPLN	DTVP0059	PLN
10A GA ATLANTA	BLCDDT	20040302AAO	LIC

After Analysis

Results for: 10N SC GREENVILLE	BLTTV	3015	LIC
--------------------------------	-------	------	-----

	POPULATION	AREA (sq km)
within Noise Limited Contour	6208	19.0
not affected by terrain losses	6208	18.0
lost to NTSC IX	2063	7.0
lost to additional IX by ATV	4145	11.0
lost to all IX	6208	18.0

Potential Interfering Stations Included in above Scenario 3

10N SC COLUMBIA	BLCT	20030210ABB	LIC	
9A SC GREENVILLE	DTVPLN	DTVP0059	PLN	
10A GA ATLANTA	BLCDDT	20040302AAO	LIC	
10A GA TOCCOA	USERRECORD01		APP	
*Percent new DTV interference without proposal:			100.0	BLTTV 3015
*Percent new DTV interference with proposal:			100.0	BLTTV 3015

Result key: 11
 Scenario 4 Affected station 23
 Before Analysis

Results for: 10N SC GREENVILLE		BLTTV	3015	LIC
	POPULATION	AREA (sq km)		
within Noise Limited Contour	6208	19.0		
not affected by terrain losses	6208	18.0		
lost to NTSC IX	2063	7.0		
lost to additional IX by ATV	4145	11.0		
lost to all IX	6208	18.0		

Potential Interfering Stations Included in above Scenario 4

10N SC COLUMBIA	BLCT	20030210ABB	LIC
9A SC GREENVILLE	DTVPLN	DTVP0059	PLN
10A GA ATLANTA	DTVPLN	DTVP0070	PLN

After Analysis

Results for: 10N SC GREENVILLE		BLTTV	3015	LIC
	POPULATION	AREA (sq km)		
within Noise Limited Contour	6208	19.0		
not affected by terrain losses	6208	18.0		
lost to NTSC IX	2063	7.0		
lost to additional IX by ATV	4145	11.0		
lost to all IX	6208	18.0		

Potential Interfering Stations Included in above Scenario 4

10N SC COLUMBIA	BLCT	20030210ABB	LIC	
9A SC GREENVILLE	DTVPLN	DTVP0059	PLN	
10A GA ATLANTA	DTVPLN	DTVP0070	PLN	
10A GA TOCCOA	USERRECORD01		APP	
*Percent new DTV interference without proposal:			100.0	BLTTV 3015
*Percent new DTV interference with proposal:			100.0	BLTTV 3015

Result key: 12
 Scenario 5 Affected station 23

Before Analysis

Results for: 10N SC GREENVILLE	BLTTV	3015	LIC
	POPULATION	AREA (sq km)	
within Noise Limited Contour	6208	19.0	
not affected by terrain losses	6208	18.0	
lost to NTSC IX	2063	7.0	
lost to additional IX by ATV	4145	11.0	
lost to all IX	6208	18.0	

Potential Interfering Stations Included in above Scenario 5

10N SC COLUMBIA	BPCT	20000501AEZ	APP
9A SC GREENVILLE	BLEDT	20041123AKQ	LIC
10A GA ATLANTA	BLCDD	20040302AAO	LIC

After Analysis

Results for: 10N SC GREENVILLE	BLTTV	3015	LIC
	POPULATION	AREA (sq km)	
within Noise Limited Contour	6208	19.0	
not affected by terrain losses	6208	18.0	
lost to NTSC IX	2063	7.0	
lost to additional IX by ATV	4145	11.0	
lost to all IX	6208	18.0	

Potential Interfering Stations Included in above Scenario 5

10N SC COLUMBIA	BPCT	20000501AEZ	APP
9A SC GREENVILLE	BLEDT	20041123AKQ	LIC
10A GA ATLANTA	BLCDD	20040302AAO	LIC
10A GA TOCCOA	USERRECORD01		APP
*Percent new DTV interference without proposal:		100.0	BLTTV 3015
*Percent new DTV interference with proposal:		100.0	BLTTV 3015

Result key: 13
 Scenario 6 Affected station 23
 Before Analysis

Results for: 10N SC GREENVILLE	BLTTV	3015	LIC
	POPULATION	AREA (sq km)	
within Noise Limited Contour	6208	19.0	
not affected by terrain losses	6208	18.0	
lost to NTSC IX	2063	7.0	
lost to additional IX by ATV	4145	11.0	
lost to all IX	6208	18.0	

Potential Interfering Stations Included in above Scenario 6

10N SC COLUMBIA	BPCT	20000501AEZ	APP
9A SC GREENVILLE	BLEDT	20041123AKQ	LIC
10A GA ATLANTA	DTVPLN	DTVP0070	PLN

After Analysis

Results for: 10N SC GREENVILLE	BLTTV	3015	LIC
--------------------------------	-------	------	-----

	POPULATION	AREA (sq km)
within Noise Limited Contour	6208	19.0
not affected by terrain losses	6208	18.0
lost to NTSC IX	2063	7.0
lost to additional IX by ATV	4145	11.0
lost to all IX	6208	18.0

Potential Interfering Stations Included in above Scenario 6

10N SC COLUMBIA	BPCT	20000501AEZ	APP		
9A SC GREENVILLE	BLEDT	20041123AKQ	LIC		
10A GA ATLANTA	DTVPLN	DTVP0070	PLN		
10A GA TOCCOA	USERRECORD01		APP		
*Percent new DTV interference without proposal:			100.0	BLTTV	3015
*Percent new DTV interference with proposal:			100.0	BLTTV	3015

Result key: 14
 Scenario 7 Affected station 23
 Before Analysis

Results for: 10N SC GREENVILLE		BLTTV	3015	LIC
	POPULATION	AREA (sq km)		
within Noise Limited Contour	6208	19.0		
not affected by terrain losses	6208	18.0		
lost to NTSC IX	2063	7.0		
lost to additional IX by ATV	4145	11.0		
lost to all IX	6208	18.0		

Potential Interfering Stations Included in above Scenario 7

10N SC COLUMBIA	BPCT	20000501AEZ	APP
9A SC GREENVILLE	DTVPLN	DTVP0059	PLN
10A GA ATLANTA	BLCDDT	20040302AAO	LIC

After Analysis

Results for: 10N SC GREENVILLE		BLTTV	3015	LIC
	POPULATION	AREA (sq km)		
within Noise Limited Contour	6208	19.0		
not affected by terrain losses	6208	18.0		
lost to NTSC IX	2063	7.0		
lost to additional IX by ATV	4145	11.0		
lost to all IX	6208	18.0		

Potential Interfering Stations Included in above Scenario 7

10N SC COLUMBIA	BPCT	20000501AEZ	APP		
9A SC GREENVILLE	DTVPLN	DTVP0059	PLN		
10A GA ATLANTA	BLCDDT	20040302AAO	LIC		
10A GA TOCCOA	USERRECORD01		APP		
*Percent new DTV interference without proposal:			100.0	BLTTV	3015
*Percent new DTV interference with proposal:			100.0	BLTTV	3015

Result key: 15
 Scenario 8 Affected station 23

Before Analysis

Results for: 10N SC GREENVILLE	BLTTV	3015	LIC
	POPULATION	AREA (sq km)	
within Noise Limited Contour	6208	19.0	
not affected by terrain losses	6208	18.0	
lost to NTSC IX	2063	7.0	
lost to additional IX by ATV	4145	11.0	
lost to all IX	6208	18.0	

Potential Interfering Stations Included in above Scenario 8

10N SC COLUMBIA	BPCT	20000501AEZ	APP
9A SC GREENVILLE	DTVPLN	DTVP0059	PLN
10A GA ATLANTA	DTVPLN	DTVP0070	PLN

After Analysis

Results for: 10N SC GREENVILLE	BLTTV	3015	LIC
	POPULATION	AREA (sq km)	
within Noise Limited Contour	6208	19.0	
not affected by terrain losses	6208	18.0	
lost to NTSC IX	2063	7.0	
lost to additional IX by ATV	4145	11.0	
lost to all IX	6208	18.0	

Potential Interfering Stations Included in above Scenario 8

10N SC COLUMBIA	BPCT	20000501AEZ	APP
9A SC GREENVILLE	DTVPLN	DTVP0059	PLN
10A GA ATLANTA	DTVPLN	DTVP0070	PLN
10A GA TOCCOA	USERRECORD01		APP
*Percent new DTV interference without proposal:	100.0	BLTTV	3015
*Percent new DTV interference with proposal:	100.0	BLTTV	3015

#####

Analysis of Interference to Affected Station 24

NTSC Baseline Analysis

Channel	Call	City/State	Application	Ref. No.
10	WBIRTV	KNOXVILLE TN	DTVPLN	-NPLN0682

Stations Potentially Affecting This Station

Chan	Call	City/State	Dist(km)	Status	Application	Ref. No.
09	WNTV-DT	GREENVILLE SC	182.1	PLN	DTVPLN	-DTVP0059
09	WTVC	CHATTANOOGA TN	155.9	PLN	DTVPLN	-NPLN0624
10	WBIQ	BIRMINGHAM AL	382.7	PLN	DTVPLN	-NPLN0636
10	WXIA-DT	ATLANTA GA	252.5	PLN	DTVPLN	-DTVP0070
10	WCPO-DT	CINCINNATI OH	350.3	PLN	DTVPLN	-DTVP0075
10	WIS	COLUMBIA SC	357.1	PLN	DTVPLN	-NPLN0680
10	WSMV-DT	NASHVILLE TN	263.3	PLN	DTVPLN	-DTVP0077
10	WSLSTV	ROANOKE VA	363.4	PLN	DTVPLN	-NPLN0689

11 WJHLTV JOHNSON CITY TN 168.4 PLN DTVPLN -NPLN0741

Results for: 10N TN KNOXVILLE DTVPLN NPLN0682 PLN
 POPULATION AREA (sq km)
 within Noise Limited Contour 1415797 42098.8
 not affected by terrain losses 1177030 31593.6
 lost to NTSC IX 54821 1720.1
 lost to additional IX by ATV 26928 1279.7
 lost to all IX 81749 2999.8

Analysis of current record

Channel	Call	City/State	Application	Ref. No.
10	WBIR-TV	KNOXVILLE TN	BLCT	-19800109KE

Stations Potentially Affecting This Station

Chan	Call	City/State	Dist(km)	Status	Application	Ref. No.
09	WNTV	GREENVILLE SC	182.0	LIC	BLEDT	-20041123AKQ
09	WNTV-DT	GREENVILLE SC	182.1	PLN	DTVPLN	-DTVP0059
09	WTVC	CHATTANOOGA TN	156.0	LIC	BLCT	-20021031ABE
10	WBIQ	BIRMINGHAM AL	383.5	APP	BFRCT	-20050815ACO
10	WBIQ	BIRMINGHAM AL	383.5	LIC	BLET	-20040412ACV
10	WXIA-TV	ATLANTA GA	252.5	LIC	BLCDDT	-20040302AAO
10	WXIA-DT	ATLANTA GA	252.5	PLN	DTVPLN	-DTVP0070
10	WCPO-DT	CINCINNATI OH	350.3	PLN	DTVPLN	-DTVP0075
10	WIS	COLUMBIA SC	357.1	LIC	BLCT	-20030210ABB
10	WIS	COLUMBIA SC	357.1	APP	BPCT	-20000501AEZ
10	WSMV-DT	NASHVILLE TN	263.3	PLN	DTVPLN	-DTVP0077
10	WSLS-TV	ROANOKE VA	363.4	LIC	BLCT	-19990813LD
11	WJHL-TV	JOHNSON CITY TN	168.4	LIC	BLCT	-2111
10	W68AF D1	TOCCOA GA	163.8	APP	USERRECORD-01	

Total scenarios = 4

Result key: 16
 Scenario 1 Affected station 24
 Before Analysis

Results for: 10N TN KNOXVILLE BLCT 19800109KE LIC
 POPULATION AREA (sq km)
 within Noise Limited Contour 1415797 42098.8
 not affected by terrain losses 1177030 31593.6
 lost to NTSC IX 56357 1722.1
 lost to additional IX by ATV 29915 1434.7
 lost to all IX 86272 3156.8

Potential Interfering Stations Included in above Scenario 1

9N TN CHATTANOOGA	BLCT	20021031ABE	LIC
10N AL BIRMINGHAM	BLET	20040412ACV	LIC
10N SC COLUMBIA	BLCT	20030210ABB	LIC
10N VA ROANOKE	BLCT	19990813LD	LIC
11N TN JOHNSON CITY	BLCT	2111	LIC
10A GA ATLANTA	BLCDDT	20040302AAO	LIC
10A OH CINCINNATI	DTVPLN	DTVP0075	PLN
10A TN NASHVILLE	DTVPLN	DTVP0077	PLN

After Analysis

Results for: 10N TN KNOXVILLE	BLCT	19800109KE	LIC
	POPULATION	AREA (sq km)	
within Noise Limited Contour	1415797	42098.8	
not affected by terrain losses	1177030	31593.6	
lost to NTSC IX	56357	1722.1	
lost to additional IX by ATV	29915	1438.7	
lost to all IX	86272	3160.7	

Potential Interfering Stations Included in above Scenario 1

9N TN CHATTANOOGA	BLCT	20021031ABE	LIC	
10N AL BIRMINGHAM	BLET	20040412ACV	LIC	
10N SC COLUMBIA	BLCT	20030210ABB	LIC	
10N VA ROANOKE	BLCT	19990813LD	LIC	
11N TN JOHNSON CITY	BLCT	2111	LIC	
10A GA ATLANTA	BLC DT	20040302AAO	LIC	
10A OH CINCINNATI	DTVPLN	DTVP0075	PLN	
10A TN NASHVILLE	DTVPLN	DTVP0077	PLN	
10A GA TOCOGA	USERRECORD01		APP	
*Percent new DTV interference without proposal:		6.1	BLCT	19800109KE
*Percent new DTV interference with proposal:		6.1	BLCT	19800109KE

Result key: 17
 Scenario 2 Affected station 24
 Before Analysis

Results for: 10N TN KNOXVILLE	BLCT	19800109KE	LIC
	POPULATION	AREA (sq km)	
within Noise Limited Contour	1415797	42098.8	
not affected by terrain losses	1177030	31593.6	
lost to NTSC IX	56357	1722.1	
lost to additional IX by ATV	27117	1285.6	
lost to all IX	83474	3007.7	

Potential Interfering Stations Included in above Scenario 2

9N TN CHATTANOOGA	BLCT	20021031ABE	LIC
10N AL BIRMINGHAM	BLET	20040412ACV	LIC
10N SC COLUMBIA	BLCT	20030210ABB	LIC
10N VA ROANOKE	BLCT	19990813LD	LIC
11N TN JOHNSON CITY	BLCT	2111	LIC
10A GA ATLANTA	DTVPLN	DTVP0070	PLN
10A OH CINCINNATI	DTVPLN	DTVP0075	PLN
10A TN NASHVILLE	DTVPLN	DTVP0077	PLN

After Analysis

Results for: 10N TN KNOXVILLE	BLCT	19800109KE	LIC
	POPULATION	AREA (sq km)	
within Noise Limited Contour	1415797	42098.8	
not affected by terrain losses	1177030	31593.6	
lost to NTSC IX	56357	1722.1	
lost to additional IX by ATV	27117	1292.5	

lost to all IX 83474 3014.6

Potential Interfering Stations Included in above Scenario 2

9N TN CHATTANOOGA	BLCT	20021031ABE	LIC
10N AL BIRMINGHAM	BLET	20040412ACV	LIC
10N SC COLUMBIA	BLCT	20030210ABB	LIC
10N VA ROANOKE	BLCT	19990813LD	LIC
11N TN JOHNSON CITY	BLCT	2111	LIC
10A GA ATLANTA	DTVPLN	DTVP0070	PLN
10A OH CINCINNATI	DTVPLN	DTVP0075	PLN
10A TN NASHVILLE	DTVPLN	DTVP0077	PLN
10A GA TOCCOA	USERRECORD01		APP

*Percent new DTV interference without proposal: 5.9 BLCT 19800109KE

*Percent new DTV interference with proposal: 5.9 BLCT 19800109KE

Result key: 18
 Scenario 3 Affected station 24
 Before Analysis

Results for: 10N TN KNOXVILLE	BLCT	19800109KE	LIC
	POPULATION	AREA (sq km)	
within Noise Limited Contour	1415797	42098.8	
not affected by terrain losses	1177030	31593.6	
lost to NTSC IX	56357	1722.1	
lost to additional IX by ATV	29915	1434.7	
lost to all IX	86272	3156.8	

Potential Interfering Stations Included in above Scenario 3

9N TN CHATTANOOGA	BLCT	20021031ABE	LIC
10N AL BIRMINGHAM	BLET	20040412ACV	LIC
10N SC COLUMBIA	BPCT	20000501AEZ	APP
10N VA ROANOKE	BLCT	19990813LD	LIC
11N TN JOHNSON CITY	BLCT	2111	LIC
10A GA ATLANTA	BLCDDT	20040302AAO	LIC
10A OH CINCINNATI	DTVPLN	DTVP0075	PLN
10A TN NASHVILLE	DTVPLN	DTVP0077	PLN

After Analysis

Results for: 10N TN KNOXVILLE	BLCT	19800109KE	LIC
	POPULATION	AREA (sq km)	
within Noise Limited Contour	1415797	42098.8	
not affected by terrain losses	1177030	31593.6	
lost to NTSC IX	56357	1722.1	
lost to additional IX by ATV	29915	1438.7	
lost to all IX	86272	3160.7	

Potential Interfering Stations Included in above Scenario 3

9N TN CHATTANOOGA	BLCT	20021031ABE	LIC
10N AL BIRMINGHAM	BLET	20040412ACV	LIC
10N SC COLUMBIA	BPCT	20000501AEZ	APP
10N VA ROANOKE	BLCT	19990813LD	LIC
11N TN JOHNSON CITY	BLCT	2111	LIC

10A GA ATLANTA	BLCDT	20040302AAO	LIC	
10A OH CINCINNATI	DTVPLN	DTVP0075	PLN	
10A TN NASHVILLE	DTVPLN	DTVP0077	PLN	
10A GA TOCCOA	USERRECORD01		APP	
*Percent new DTV interference without proposal:			6.1	BLCT 19800109KE
*Percent new DTV interference with proposal:			6.1	BLCT 19800109KE

Result key: 19
Scenario 4 Affected station 24
Before Analysis

Results for: 10N TN KNOXVILLE	BLCT	19800109KE	LIC
	POPULATION	AREA (sq km)	
within Noise Limited Contour	1415797	42098.8	
not affected by terrain losses	1177030	31593.6	
lost to NTSC IX	56357	1722.1	
lost to additional IX by ATV	27117	1285.6	
lost to all IX	83474	3007.7	

Potential Interfering Stations Included in above Scenario 4

9N TN CHATTANOOGA	BLCT	20021031ABE	LIC
10N AL BIRMINGHAM	BLET	20040412ACV	LIC
10N SC COLUMBIA	BPCT	20000501AEZ	APP
10N VA ROANOKE	BLCT	19990813LD	LIC
11N TN JOHNSON CITY	BLCT	2111	LIC
10A GA ATLANTA	DTVPLN	DTVP0070	PLN
10A OH CINCINNATI	DTVPLN	DTVP0075	PLN
10A TN NASHVILLE	DTVPLN	DTVP0077	PLN

After Analysis

Results for: 10N TN KNOXVILLE	BLCT	19800109KE	LIC
	POPULATION	AREA (sq km)	
within Noise Limited Contour	1415797	42098.8	
not affected by terrain losses	1177030	31593.6	
lost to NTSC IX	56357	1722.1	
lost to additional IX by ATV	27117	1292.5	
lost to all IX	83474	3014.6	

Potential Interfering Stations Included in above Scenario 4

9N TN CHATTANOOGA	BLCT	20021031ABE	LIC
10N AL BIRMINGHAM	BLET	20040412ACV	LIC
10N SC COLUMBIA	BPCT	20000501AEZ	APP
10N VA ROANOKE	BLCT	19990813LD	LIC
11N TN JOHNSON CITY	BLCT	2111	LIC
10A GA ATLANTA	DTVPLN	DTVP0070	PLN
10A OH CINCINNATI	DTVPLN	DTVP0075	PLN
10A TN NASHVILLE	DTVPLN	DTVP0077	PLN
10A GA TOCCOA	USERRECORD01		APP
*Percent new DTV interference without proposal:			5.9 BLCT 19800109KE
*Percent new DTV interference with proposal:			5.9 BLCT 19800109KE

#####

Analysis of Interference to Affected Station 25

Analysis of current record

Channel	Call	City/State	Application	Ref. No.
10	WLLP-CA	LAWRENCEBURG TN	BLTVL	-19891205ID

Stations Potentially Affecting This Station

Chan	Call	City/State	Dist(km)	Status	Application	Ref. No.
10	WBIQ	BIRMINGHAM AL	213.8	APP	BFCET	-20050815ACO
10	WBIQ	BIRMINGHAM AL	213.8	LIC	BLET	-20040412ACV
10	WXIA-TV	ATLANTA GA	324.1	LIC	BLCDT	-20040302AAO
10	WXIA-DT	ATLANTA GA	324.1	PLN	DTVPLN	-DTVP0070
10	WMAB-TV	MISSISSIPPI STATE MS	281.8	LIC	BLEDT	-20030326ABX
10	WMAB-DT	MISSISSIPPI STATE MS	281.8	LIC	BPRM	-20010629ACP
10	WBIR-TV	KNOXVILLE TN	310.1	LIC	BLCT	-19800109KE
10	WKNO	MEMPHIS TN	231.6	LIC	BLET	-20031020ABF
10	WSMV-DT	NASHVILLE TN	93.9	PLN	DTVPLN	-DTVP0077
11	WLJT	LEXINGTON TN	125.0	LIC	BLET	-203
10	W68AF D1	TOCCOA GA	366.7	APP	USERRECORD-01	

Proposed station is beyond the site to
nearest cell evaluation distance

#####

Analysis of Interference to Affected Station 26

DTV Baseline Analysis

Channel	Call	City/State	Application	Ref. No.
10	WSMV-DT	NASHVILLE TN	DTVPLN	-DTVP0077

Stations Potentially Affecting This Station

Chan	Call	City/State	Dist(km)	Status	Application	Ref. No.
09	WNIN	EVANSVILLE IN	213.9	PLN	DTVPLN	-NPLN0596
09	WTVN	CHATTANOOGA TN	177.2	PLN	DTVPLN	-NPLN0624
10	WBIQ	BIRMINGHAM AL	294.9	PLN	DTVPLN	-NPLN0636
10	WXIA-DT	ATLANTA GA	351.4	PLN	DTVPLN	-DTVP0070
10	WTHITV	TERRE HAUTE IN	347.9	PLN	DTVPLN	-NPLN0649
10	WCPO-DT	CINCINNATI OH	391.7	PLN	DTVPLN	-DTVP0075
10	WBIRTV	KNOXVILLE TN	263.3	PLN	DTVPLN	-NPLN0682
10	WKNO	MEMPHIS TN	288.7	PLN	DTVPLN	-NPLN0683
11	WLJTTV	LEXINGTON TN	163.8	PLN	DTVPLN	-NPLN0742

Results for: 10A TN NASHVILLE DTVPLN DTVP0077 PLN
HAAT 434.0 m, ATV ERP 39.7 kW

	POPULATION	AREA (sq km)
within Noise Limited Contour	1693672	41124.7
not affected by terrain losses	1653865	38204.5
lost to NTSC IX	45224	1611.8
lost to additional IX by ATV	160	3.9

lost to ATV IX only	1471	59.1
lost to all IX	45384	1615.7

NTSC Baseline Analysis

Channel	Call	City/State	Application	Ref. No.
04	WSMVTV	NASHVILLE TN	DTVPLN	-NPLN0319

Stations Potentially Affecting This Station

Chan	Call	City/State	Dist(km)	Status	Application	Ref. No.
03	WRCBTB	CHATTANOOGA TN	177.4	PLN	DTVPLN	-NPLN0258
04	WTTV	BLOOMINGTON IN	368.5	PLN	DTVPLN	-NPLN0289
04	WDKY-DT	DANVILLE KY	266.8	PLN	DTVPLN	-DTVP0014
04	KMOV	ST. LOUIS MO	403.2	PLN	DTVPLN	-NPLN0297
04	WCBITV	COLUMBUS MS	322.7	PLN	DTVPLN	-NPLN0298
04	WYFF	GREENVILLE SC	401.6	PLN	DTVPLN	-NPLN0317

Results for:	4N TN NASHVILLE	DTVPLN	NPLN0319	PLN
		POPULATION	AREA (sq km)	
within Noise Limited Contour		1693649	41118.7	
not affected by terrain losses		1647636	38079.4	
lost to NTSC IX		76681	3407.8	
lost to additional IX by ATV		1089	20.7	
lost to all IX		77770	3428.5	

Analysis of current record

Channel	Call	City/State	Application	Ref. No.
10	WSMV-TV	NASHVILLE TN	BLCDDT	-20021029AAV

Stations Potentially Affecting This Station

Chan	Call	City/State	Dist(km)	Status	Application	Ref. No.
09	WNIN	EVANSVILLE IN	207.9	LIC	BLET	-20030423ABK
09	WTVC	CHATTANOOGA TN	177.2	LIC	BLCT	-20021031ABE
10	WBIQ	BIRMINGHAM AL	295.3	APP	BFRCT	-20050815ACO
10	WBIQ	BIRMINGHAM AL	295.3	LIC	BLET	-20040412ACV
10	WXIA-TV	ATLANTA GA	351.4	LIC	BLCDDT	-20040302AAO
10	WXIA-DT	ATLANTA GA	351.4	PLN	DTVPLN	-DTVP0070
10	WTHI-TV	TERRE HAUTE IN	347.9	LIC	BLCT	-1464
10	WMAB-TV	MISSISSIPPI STATE MS	373.4	LIC	BLEDT	-20030326ABX
10	WMAB-DT	MISSISSIPPI STATE MS	373.4	LIC	BPRM	-20010629ACP
10	WCPO-DT	CINCINNATI OH	391.7	PLN	DTVPLN	-DTVP0075
10	WBIR-TV	KNOXVILLE TN	263.3	LIC	BLCT	-19800109KE
10	WKNO	MEMPHIS TN	288.7	LIC	BLET	-20031020ABF
11	WLJT	LEXINGTON TN	163.8	LIC	BLET	-203
10	W68AF D1	TOCCOA GA	360.1	APP	USERRECORD-01	

Proposal causes no interference

#####

Analysis of Interference to Affected Station 27

NTSC Baseline Analysis

Channel	Call	City/State	Application	Ref. No.
10	WSLSTV	ROANOKE VA	DTVPLN	-NPLN0689

Stations Potentially Affecting This Station

Chan	Call	City/State	Dist(km)	Status	Application	Ref. No.
09	WSWPTV	GRANDVIEW WV	107.1	PLN	DTVPLN	-NPLN0634
10	WNCT-DT	GREENVILLE NC	320.2	PLN	DTVPLN	-DTVP0073
10	WBNSTV	COLUMBUS OH	396.7	PLN	DTVPLN	-NPLN0673
10	WTAJTV	ALTOONA PA	402.2	PLN	DTVPLN	-NPLN0677
10	WIS	COLUMBIA SC	346.3	PLN	DTVPLN	-NPLN0680
10	WBIRTV	KNOXVILLE TN	363.4	PLN	DTVPLN	-NPLN0682
10	WAVYTV	PORTSMOUTH VA	325.6	PLN	DTVPLN	-NPLN0688
11	WJHLTV	JOHNSON CITY TN	196.5	PLN	DTVPLN	-NPLN0741
11	WVPT-DT	STAUNTON VA	129.9	PLN	DTVPLN	-DTVP0091
11	WVAHTV	CHARLESTON WV	206.6	PLN	DTVPLN	-NPLN0749

Results for: 10N VA ROANOKE			DTVPLN	NPLN0689	PLN
			POPULATION	AREA (sq km)	
within Noise Limited Contour			1390145	42226.8	
not affected by terrain losses			1145943	33969.4	
lost to NTSC IX			51835	2519.9	
lost to additional IX by ATV			1062	45.8	
lost to all IX			52897	2565.7	

Analysis of current record

Channel	Call	City/State	Application	Ref. No.
10	WSLS-TV	ROANOKE VA	BLCT	-19990813LD

Stations Potentially Affecting This Station

Chan	Call	City/State	Dist(km)	Status	Application	Ref. No.
09	WSWP-TV	GRANDVIEW WV	107.1	LIC	BLET	-19830831KF
10	WNCT-DT	GREENVILLE NC	320.2	PLN	DTVPLN	-DTVP0073
10	WNCT-TV	GREENVILLE NC	320.2	CP MOD	BMPCDT	-20040730ARH
10	WBNS-TV	COLUMBUS OH	396.7	LIC	BLCT	-19820708KF
10	WTAJ-TV	ALTOONA PA	402.2	LIC	BMLCT	-20041201AWB
10	WIS	COLUMBIA SC	346.3	LIC	BLCT	-20030210ABB
10	WIS	COLUMBIA SC	346.3	APP	BPCT	-20000501AEZ
10	WBIR-TV	KNOXVILLE TN	363.4	LIC	BLCT	-19800109KE
10	WAVY-TV	PORTSMOUTH VA	325.5	LIC	BMLCT	-19960821KE
10	WVFX	CLARKSBURG WV	234.0	CP MOD	BMPCDT	-20020930AAV
10	WVFX	CLARKSBURG WV	234.0	LIC	BPRM	-20000328AAA
11	WTVI	CHARLOTTE NC	218.3	LIC	BMLEDT	-20030428AAT
11	WTVI-DR	CHARLOTTE NC	218.3	LIC	BPRM	-20000411AAG
11	WJHL-TV	JOHNSON CITY TN	196.5	LIC	BLCT	-2111
11	WVPT	STAUNTON VA	129.9	LIC	BLEDT	-20021220ADX
11	WVPT-DT	STAUNTON VA	129.9	PLN	DTVPLN	-DTVP0091
11	WVAH-TV	CHARLESTON WV	204.3	CP	BPCT	-20030728ADD
10	W68AF D1	TOCCOA GA	408.4	APP	USERRECORD-01	

Proposal causes no interference

#####

Analysis of Interference to Affected Station 28

NTSC Baseline Analysis

Channel	Call	City/State	Application Ref. No.
11	WXIATV	ATLANTA GA	DTVPLN -NPLN0706

Stations Potentially Affecting This Station

Chan	Call	City/State	Dist(km)	Status	Application Ref. No.
10	WXIA-DT	ATLANTA GA	0.0	PLN	DTVPLN -DTVP0070
11	WFSUTV	TALLAHASSEE FL	378.7	PLN	DTVPLN -NPLN0705
11	WTOCTV	SAVANNAH GA	336.5	PLN	DTVPLN -NPLN0707
11	WJHLTV	JOHNSON CITY TN	358.1	PLN	DTVPLN -NPLN0741
12	WDEFTV	CHATTANOOGA TN	178.1	PLN	DTVPLN -NPLN0795

Results for: 11N GA ATLANTA	DTVPLN	NPLN0706	PLN
	POPULATION	AREA (sq km)	
within Noise Limited Contour	3465897	30015.2	
not affected by terrain losses	3354720	27087.3	
lost to NTSC IX	24837	1138.5	
lost to additional IX by ATV	0	0.0	
lost to all IX	24837	1138.5	

Analysis of current record

Channel	Call	City/State	Application Ref. No.
11	WXIA-TV	ATLANTA GA	BMLCT -19960208KF

Stations Potentially Affecting This Station

Chan	Call	City/State	Dist(km)	Status	Application Ref. No.
10	WXIA-TV	ATLANTA GA	0.0	LIC	BLC DT -20040302AAO
10	WXIA-DT	ATLANTA GA	0.0	PLN	DTVPLN -DTVP0070
11	WDIQ	DOZIER AL	311.6	LIC	BLEDT -20031023AAG
11	WDIQ	DOZIER AL	311.6	LIC	BPRM -20000328AAJ
11	WFSU-TV	TALLAHASSEE FL	378.7	LIC	BLET -343
11	WTOC-TV	SAVANNAH GA	336.5	LIC	BLCT -2311
11	WTVI	CHARLOTTE NC	373.9	LIC	BMLED T -20030428AAT
11	WTVI-DR	CHARLOTTE NC	373.9	LIC	BPRM -20000411AAG
11	WJHL-TV	JOHNSON CITY TN	358.1	LIC	BLCT -2111
12	WGTV	ATHENS GA	18.1	CP MOD	BMPED T -20020923ABE
12	WGTV-TV	ATHENS GA	18.1	LIC	BPRM -20010226ABP
12	WDEF-TV	CHATTANOOGA TN	178.1	LIC	BLCT -1619
10	W68AF D1	TOCCOA GA	130.0	APP	USERRECORD-01

Total scenarios = 1

Result key: 20
Scenario 1 Affected station 28
Before Analysis

Results for: 11N GA ATLANTA	BMLCT	19960208KF	LIC
	POPULATION	AREA (sq km)	
within Noise Limited Contour	3470482	30115.1	
not affected by terrain losses	3358234	27179.3	
lost to NTSC IX	25070	1144.5	
lost to additional IX by ATV	0	0.0	
lost to all IX	25070	1144.5	

Potential Interfering Stations Included in above Scenario 1

11N FL TALLAHASSEE	BLET	343	LIC
11N GA SAVANNAH	BLCT	2311	LIC
11N TN JOHNSON CITY	BLCT	2111	LIC
12N TN CHATTANOOGA	BLCT	1619	LIC

After Analysis

Results for: 11N GA ATLANTA BMLCT 19960208KF LIC

	POPULATION	AREA (sq km)
within Noise Limited Contour	3470482	30115.1
not affected by terrain losses	3358234	27179.3
lost to NTSC IX	25070	1144.5
lost to additional IX by ATV	0	0.0
lost to all IX	25070	1144.5

Potential Interfering Stations Included in above Scenario 1

11N FL TALLAHASSEE	BLET	343	LIC
11N GA SAVANNAH	BLCT	2311	LIC
11N TN JOHNSON CITY	BLCT	2111	LIC
12N TN CHATTANOOGA	BLCT	1619	LIC
10A GA TOCCOA	USERRECORD01	APP	

*Percent new DTV interference without proposal: 0.7 BMLCT 19960208KF

*Percent new DTV interference with proposal: 0.7 BMLCT 19960208KF

#####

Analysis of Interference to Affected Station 29

Analysis of current record

Channel	Call	City/State	Application Ref. No.
11	W11AX	BAT CAVE, ETC. NC	BLTTV -19800501IB

Stations Potentially Affecting This Station

Chan	Call	City/State	Dist(km)	Status	Application Ref. No.
10	W10AP	MARION, ETC. NC	34.8	LIC	BLTTV -19800428IN
10	W10AD	MONTREAT, ETC. NC	23.5	LIC	BLTTV -19790820IE
11	WXIA-TV	ATLANTA GA	265.9	LIC	BMLCT -19960208KF
11	WTOC-TV	SAVANNAH GA	384.5	LIC	BLCT -2311
11	W11AN	BRYSON CITY, ETC. NC	105.2	LIC	BLTTV -4960
11	W11AU	CANTON, ETC. NC	61.2	LIC	BLTTV -19830425IF
11	WTVI	CHARLOTTE NC	142.2	LIC	BMLEDT -20030428AAT
11	WTVI-DR	CHARLOTTE NC	142.2	LIC	BPRM -20000411AAG
11	WTVI	DURHAM NC	337.6	LIC	BLCT -20010709ACP
11	W11AJ	FRANKLIN NC	123.8	LIC	BLTTV -19811211IC
11	W11AQ	ROBBINSVILLE, ETC. NC	141.1	LIC	BLTTV -19821008IB
11	WJHL-TV	JOHNSON CITY TN	111.8	LIC	BLCT -2111
11	WVAH-TV	CHARLESTON WV	332.4	CP	BPCT -20030728ADD
12	W12AQ	BLACK MOUNTAIN NC	22.5	LIC	BLTTV -1804
10	W68AF D1	TOCCOA GA	136.1	APP	USERRECORD-01

Proposal causes no interference

#####

Analysis of Interference to Affected Station 30

Analysis of current record

Channel	Call	City/State	Application	Ref. No.
11	W11AN	BRYSON CITY, ETC. NC	BLTTV	-4960

Stations Potentially Affecting This Station

Chan	Call	City/State	Dist(km)	Status	Application	Ref. No.
10	W10AL	CHEROKEE, ETC. NC	13.9	LIC	BLTTV	-3607
10	WBIR-TV	KNOXVILLE TN	84.0	LIC	BLCT	-19800109KE
11	WXIA-TV	ATLANTA GA	199.2	LIC	BMLCT	-19960208KF
11	W11AX	BAT CAVE, ETC. NC	105.2	LIC	BLTTV	-19800501IB
11	W11AU	CANTON, ETC. NC	50.8	LIC	BLTTV	-19830425IF
11	WTVI	CHARLOTTE NC	246.7	LIC	BMLEDT	-20030428AAT
11	WTVI-DR	CHARLOTTE NC	246.7	LIC	BPRM	-20000411AAG
11	W11AJ	FRANKLIN NC	28.0	LIC	BLTTV	-19811211IC
11	W11AQ	ROBBINSVILLE, ETC. NC	37.3	LIC	BLTTV	-19821008IB
11	WJHL-TV	JOHNSON CITY TN	163.9	LIC	BLCT	-2111
11	WVAH-TV	CHARLESTON WV	362.2	CP	BPCT	-20030728ADD
12	W12AR	WAYNESVILLE, ETC. NC	36.2	LIC	BLTTV	-4877
10	W68AF D1	TOCCOA GA	86.0	APP	USERRECORD-01	

Proposal causes no interference

#####

Analysis of Interference to Affected Station 31

Analysis of current record

Channel	Call	City/State	Application	Ref. No.
11	W11AU	CANTON, ETC. NC	BLTTV	-19830425IF

Stations Potentially Affecting This Station

Chan	Call	City/State	Dist(km)	Status	Application	Ref. No.
10	W10AL	CHEROKEE, ETC. NC	39.9	LIC	BLTTV	-3607
10	WBIR-TV	KNOXVILLE TN	104.6	LIC	BLCT	-19800109KE
11	WXIA-TV	ATLANTA GA	240.6	LIC	BMLCT	-19960208KF
11	W11AX	BAT CAVE, ETC. NC	61.2	LIC	BLTTV	-19800501IB
11	W11AN	BRYSON CITY, ETC. NC	50.8	LIC	BLTTV	-4960
11	WTVI	CHARLOTTE NC	202.8	LIC	BMLEDT	-20030428AAT
11	WTVI-DR	CHARLOTTE NC	202.8	LIC	BPRM	-20000411AAG
11	W11AJ	FRANKLIN NC	76.0	LIC	BLTTV	-19811211IC
11	W11AQ	ROBBINSVILLE, ETC. NC	88.0	LIC	BLTTV	-19821008IB
11	WJHL-TV	JOHNSON CITY TN	117.6	LIC	BLCT	-2111
11	WVAH-TV	CHARLESTON WV	327.1	CP	BPCT	-20030728ADD
12	W12AR	WAYNESVILLE, ETC. NC	15.4	LIC	BLTTV	-4877
10	W68AF D1	TOCCOA GA	115.3	APP	USERRECORD-01	

Proposal causes no interference

#####

Analysis of Interference to Affected Station 32

Analysis of current record

Channel	Call	City/State	Application	Ref. No.
11	W11AJ	FRANKLIN NC	BLTTV	-19811211IC

Stations Potentially Affecting This Station

Chan	Call	City/State	Dist(km)	Status	Application	Ref. No.
10	W10AQ	YOUNG HARRIS GA	40.0	LIC	BLTTV	-4061
10	W10AL	CHEROKEE, ETC. NC	41.8	LIC	BLTTV	-3607
10	WBIR-TV	KNOXVILLE TN	98.3	LIC	BLCT	-19800109KE
11	WXIA-TV	ATLANTA GA	171.5	LIC	BMLCT	-19960208KF
11	W11AX	BAT CAVE, ETC. NC	123.8	LIC	BLTTV	-19800501IB
11	W11AN	BRYSON CITY, ETC. NC	28.0	LIC	BLTTV	-4960
11	W11AU	CANTON, ETC. NC	76.0	LIC	BLTTV	-19830425IF
11	WTVI	CHARLOTTE NC	262.3	LIC	BMLEDT	-20030428AAT
11	WTVI-DR	CHARLOTTE NC	262.3	LIC	BPRM	-20000411AAG
11	W11AQ	ROBBINSVILLE, ETC. NC	21.8	LIC	BLTTV	-19821008IB
11	WJHL-TV	JOHNSON CITY TN	191.4	LIC	BLCT	-2111
11	WETV-LP	MURFREESBORO TN	264.9	APP	BPTVA	-20030822AGE
11	WVAH-TV	CHARLESTON WV	389.6	CP	BPCT	-20030728ADD
10	W68AF D1	TOCCOA GA	65.4	APP	USERRECORD-01	

Proposal causes no interference

#####

Analysis of Interference to Affected Station 33

Analysis of current record

Channel	Call	City/State	Application	Ref. No.
11	W11AQ	ROBBINSVILLE, ETC. NC	BLTTV	-19821008IB

Stations Potentially Affecting This Station

Chan	Call	City/State	Dist(km)	Status	Application	Ref. No.
10	W10AQ	YOUNG HARRIS GA	37.1	LIC	BLTTV	-4061
10	W10AL	CHEROKEE, ETC. NC	49.1	LIC	BLTTV	-3607
10	WBIR-TV	KNOXVILLE TN	84.1	LIC	BLCT	-19800109KE
11	WXIA-TV	ATLANTA GA	173.9	LIC	BMLCT	-19960208KF
11	WHAS-TV	LOUISVILLE KY	389.8	LIC	BLCT	-19820811KF
11	W11AX	BAT CAVE, ETC. NC	141.1	LIC	BLTTV	-19800501IB
11	W11AN	BRYSON CITY, ETC. NC	37.3	LIC	BLTTV	-4960
11	W11AU	CANTON, ETC. NC	88.0	LIC	BLTTV	-19830425IF
11	WTVI	CHARLOTTE NC	281.4	LIC	BMLEDT	-20030428AAT
11	WTVI-DR	CHARLOTTE NC	281.4	LIC	BPRM	-20000411AAG
11	W11AJ	FRANKLIN NC	21.8	LIC	BLTTV	-19811211IC
11	WJHL-TV	JOHNSON CITY TN	198.5	LIC	BLCT	-2111
11	WETV-LP	MURFREESBORO TN	243.4	APP	BPTVA	-20030822AGE
11	WVAH-TV	CHARLESTON WV	388.5	CP	BPCT	-20030728ADD
10	W68AF D1	TOCCOA GA	82.2	APP	USERRECORD-01	

Proposal causes no interference

#####

Analysis of Interference to Affected Station 34

Analysis of current record

Channel	Call	City/State	Application Ref. No.
10	W68AF D1	TOCCOA GA	USERRECORD-01

Stations Potentially Affecting This Station

Chan	Call	City/State	Dist(km)	Status	Application Ref. No.
09	WNTV	GREENVILLE SC	94.6	LIC	BLEDT -20041123AKQ
09	WNTV-DT	GREENVILLE SC	94.5	PLN	DTVPLN -DTVP0059
10	WBIQ	BIRMINGHAM AL	340.8	APP	BFCET -20050815ACO
10	WBIQ	BIRMINGHAM AL	340.8	LIC	BLET -20040412ACV
10	WALB	ALBANY GA	367.3	LIC	BLCT -2413
10	WXIA-TV	ATLANTA GA	130.0	LIC	BLCDT -20040302AAO
10	WXIA-DT	ATLANTA GA	130.0	PLN	DTVPLN -DTVP0070
10	W10AQ	YOUNG HARRIS GA	62.4	LIC	BLTTV -4061
10	W10AL	CHEROKEE, ETC. NC	97.7	LIC	BLTTV -3607
10	W10AD	MONTREAT, ETC. NC	146.4	LIC	BLTTV -19790820IE
10	WIS	COLUMBIA SC	245.2	LIC	BLCT -20030210ABB
10	WIS	COLUMBIA SC	245.2	APP	BPCT -20000501AEZ
10	W10AJ	GREENVILLE SC	94.0	LIC	BLTTV -3015
10	WBIR-TV	KNOXVILLE TN	163.8	LIC	BLCT -19800109KE
10	WSMV-DT	NASHVILLE TN	360.1	PLN	DTVPLN -DTVP0077
11	WXIA-TV	ATLANTA GA	130.0	LIC	BMLCT -19960208KF

Total scenarios = 4

Result key: 21
Scenario 1 Affected station 34
Before Analysis

Results for: 10A GA TOCCOA USERRECORD01 APP

HAAT 129.0 m, ATV ERP 0.2 kW	POPULATION	AREA (sq km)
within Noise Limited Contour	68000	2212.1
not affected by terrain losses	68000	2212.1
lost to NTSC IX	98	5.9
lost to additional IX by ATV	1238	93.0
lost to ATV IX only	1336	98.9
lost to all IX	1336	98.9

Potential Interfering Stations Included in above Scenario 1

10N SC COLUMBIA	BLCT	20030210ABB	LIC
9A SC GREENVILLE	BLEDT	20041123AKQ	LIC
10A GA ATLANTA	BLCDT	20040302AAO	LIC

*Percent Service lost without proposal: 0.0 to USERRECORD01
*Percent Service lost with proposal: 0.0 to USERRECORD01

Result key: 22
 Scenario 2 Affected station 34
 Before Analysis

Results for: 10A GA TOCCOA USERRECORD01 APP
 HAAT 129.0 m, ATV ERP 0.2 kW

	POPULATION	AREA (sq km)
within Noise Limited Contour	68000	2212.1
not affected by terrain losses	68000	2212.1
lost to NTSC IX	98	5.9
lost to additional IX by ATV	251	34.3
lost to ATV IX only	349	39.2
lost to all IX	349	40.1

Potential Interfering Stations Included in above Scenario 2

10N SC COLUMBIA	BLCT	20030210ABB	LIC
9A SC GREENVILLE	BLEDT	20041123AKQ	LIC
10A GA ATLANTA	DTVPLN	DTVP0070	PLN
*Percent Service lost without proposal:		0.0	to USERRECORD01
*Percent Service lost with proposal:		0.0	to USERRECORD01

Result key: 23
 Scenario 3 Affected station 34
 Before Analysis

Results for: 10A GA TOCCOA USERRECORD01 APP
 HAAT 129.0 m, ATV ERP 0.2 kW

	POPULATION	AREA (sq km)
within Noise Limited Contour	68000	2212.1
not affected by terrain losses	68000	2212.1
lost to NTSC IX	98	5.9
lost to additional IX by ATV	1238	93.0
lost to ATV IX only	1336	98.9
lost to all IX	1336	98.9

Potential Interfering Stations Included in above Scenario 3

10N SC COLUMBIA	BPCT	20000501AEZ	APP
9A SC GREENVILLE	BLEDT	20041123AKQ	LIC
10A GA ATLANTA	BLCDDT	20040302AAO	LIC
*Percent Service lost without proposal:		0.0	to USERRECORD01
*Percent Service lost with proposal:		0.0	to USERRECORD01

Result key: 24
 Scenario 4 Affected station 34
 Before Analysis

Results for: 10A GA TOCCOA USERRECORD01 APP
 HAAT 129.0 m, ATV ERP 0.2 kW

	POPULATION	AREA (sq km)
within Noise Limited Contour	68000	2212.1
not affected by terrain losses	68000	2212.1
lost to NTSC IX	98	5.9
lost to additional IX by ATV	251	34.3

lost to ATV IX only	349	39.2
lost to all IX	349	40.1

Potential Interfering Stations Included in above Scenario 4

10N SC COLUMBIA	BPCT	20000501AEZ	APP
9A SC GREENVILLE	BLEDT	20041123AKQ	LIC
10A GA ATLANTA	DTVPLN	DTVP0070	PLN
*Percent Service lost without proposal:		0.0	to USERRECORD01
*Percent Service lost with proposal:		0.0	to USERRECORD01

#####

FINISHED FINISHED FINISHED FINISHED FINISHED FINISHED

TOWAIR Determination Results

A routine check of the coordinates, heights, and structure type you provided indicates that this structure does not require registration.

*** NOTICE ***

TOWAIR's findings are not definitive or binding, and we cannot guarantee that the data in TOWAIR are fully current and accurate. In some instances, TOWAIR may yield results that differ from application of the criteria set out in 47 C.F.R. Section 17.7 and 14 C.F.R. Section 77.13. A positive finding by TOWAIR recommending notification should be given considerable weight. On the other hand, a finding by TOWAIR recommending either for or against notification is not conclusive. It is the responsibility of each ASR participant to exercise due diligence to determine if it must coordinate its structure with the FAA. TOWAIR is only one tool designed to assist ASR participants in exercising this due diligence, and further investigation may be necessary to determine if FAA coordination is appropriate.

DETERMINATION Results							
PASS SLOPE(100:1): NO FAA REQ-RWY MORE THAN 10499 MTRS & 6363.91 MTRS (6.36390 KM) AWAY							
Type	C/R	Latitude	Longitude	Name	Address	Lowest Elevation (m)	Runway Length (m)
AIRP	R	34-35-15.00N	083-17-59.00W	TOCCOA RG LETOURNEAU FIELD	STEPHENS TOCCOA, GA	289.0	1220.0999999999999
PASS SLOPE(100:1): NO FAA REQ-RWY MORE THAN 10499 MTRS & 6191.70 MTRS (6.1917 KM) AWAY							
Type	C/R	Latitude	Longitude	Name	Address	Lowest Elevation (m)	Runway Length (m)
AIRP	R	34-35-43.00N	083-17-55.00W	TOCCOA RG LETOURNEAU FIELD	STEPHENS TOCCOA, GA	289.0	1220.0999999999999
Your Specifications							
NAD83 Coordinates							
Latitude						34-36-32.4 north	
Longitude						083-21-50.6 west	
Measurements (Meters)							
Overall Structure Height (AGL)						60.7	

Support Structure Height (AGL)	42.3
Site Elevation (AMSL)	414.5
Structure Type	
TOWER - Free standing or Guyed Structure used for Communications Purposes	

Tower Construction Notification

Notify Tribes and Historic Preservation Officers of your plans to build a tower.

Note: Notification does NOT replace [Section 106 Consultation](#).

CLOSE WINDOW