

WVAN-DT CHANNEL 9 MINOR  
MODIFICATION OF CONSTRUCTION  
PERMIT APPLICATION FOR MAXIMIZED  
POST-TRANSITION DTV OPERATION  
SAVANNAH, GEORGIA  
*(Georgia Public Telecommunications Commission)*

KESSLER AND GEHMAN ASSOCIATES, INC.  
TELECOMMUNICATIONS CONSULTING ENGINEERS

20080619

*Prepared by William T. Godfrey, Jr.*

KG&A

507 N.W. 60th Street, Suite C  
Gainesville, Florida 32607



**Kessler and Gehman Associates, Inc.**

Telecommunications Consulting Engineers

**ENGINEERING TECHNICAL STATEMENT PREPARED BY WILLIAM T. GODFREY, JR. OF THE FIRM KESSLER AND GEHMAN ASSOCIATES, INC., TELECOMMUNICATIONS CONSULTING ENGINEERS IN CONNECTION WITH A MINOR MODIFICATION OF CONSTRUCTION PERMIT APPLICATION (BPEDT-20080313ACQ) REQUESTING A CONSTRUCTION PERMIT FOR AUTHORIZATION TO OPERATE THE GEORGIA PUBLIC TELECOMMUNICATION COMMISSION (GPTC) DIGITAL TELEVISION BROADCAST FACILITY, WVAN-DT CHANNEL 9, WITH MAXIMIZED PARAMETERS ON ITS POST-TRANSITION DIGITAL CHANNEL AS ADOPTED IN APPENDIX B.**

The firm Kessler and Gehman Associates, Inc. has been retained by Georgia Public Telecommunications Commission (GPTC), Atlanta, GA to prepare engineering studies and the engineering portion of a minor modification of construction permit application (BPEDT-20080313ACQ) requesting authorization to maximize the WVAN-DT Channel 9 post-transition DTV facility pursuant to the procedures outlined in the Third Periodic Review Report and Order (MB Docket No. 07-91) and the Public Notice released on May 30, 2008 lifting the freeze on maximization application filings (DA-08-1213). The following table depicts the allotted (Appendix B), authorized (CP) and proposed (maximization) parameters respectively for the WVAN-DT post-transition DTV facility.

<i>Facility ID</i>	<i>State</i>	<i>City</i>	<i>Call Sign</i>	<i>DTV Chan</i>	<i>DTV ERP (kW)</i>	<i>DTV HAAT (m)</i>	<i>DTV Antenna ID</i>	<i>DTV Latitude (DDMMSS)</i>	<i>DTV Longitude (DDMMSS)</i>
--------------------	--------------	-------------	------------------	-----------------	---------------------	---------------------	-----------------------	------------------------------	-------------------------------

***Final DTV Table of Allotments (Appendix B) Parameters:***

23947	GA	SAVANNAH	WVAN	9	15.2	320.0	80230	320848	813705
-------	----	----------	------	---	------	-------	-------	--------	--------

***Authorized Parameters (BPEDT-20080313ACQ):***

23947	GA	SAVANNAH	WVAN	9	7.5	388.3	OMNI	320848	813705
-------	----	----------	------	---	-----	-------	------	--------	--------

***Proposed Maximized Parameters:***

23947	GA	SAVANNAH	WVAN	9	20.0	388.3	OMNI	320848	813705
-------	----	----------	------	---	------	-------	------	--------	--------



Accordingly, GPTC proposes to maximize operation of the WVAN-DT Channel 9 post-transition DTV facility by making the following modifications to its existing post-transition DTV Channel 9 construction permit:

- 1) Increase maximum Effective Radiated Power (ERP) from 7.5 kW to 20.0 kW.

All other operating parameters shall remain as authorized in the underlying post-transition DTV construction permit (BPEDT-20080313ACQ).

### **Post-Transition Interference Protection**

The proposed facility satisfies the post-transition interference protection provisions of §73.616 of the FCC Rules. Exhibits 10 (Part1) and 11 (Part2) are Longley-Rice interference studies that were computed using a Sun Microsystems SPARC 5 computer work station loaded with the FCC's DTV analysis software. The interference percentages are exactly the same as the FCC calculations since the studies were performed using the same type computers and the same interference analysis software. Exhibit 10 was run to determine the interference predicted to each desired station from the proposed WVAN-DT Channel 9 post-transition DTV maximized facility. The FCC program recognized a mutually exclusive situation between the proposed WVAN-DT maximized facility and the allotted WVAN-DT Appendix B facility because they both had the same community of license (Savannah) and they both were assigned Channel 9. As a result, the program threw out the allotted Channel 9 facility in the "Before" studies and used the proposed Channel 9 maximized facility in the "After" studies. Therefore, only the populations in the "After" studies are used in Exhibit 10 to identify the population predicted to receive interference from the proposed maximized facility. Exhibit 11 is the exact same study as Exhibit 10 except the community of license was purposely changed from "Savannah" to "Savannah\_2" for the proposed maximized facility so that the program would not throw out the allotted Channel 9 facility. Referring to Exhibit 11, it can be seen that the "Before" studies now contain the allotted Channel 9 facility so that the interference predicted to be received within the desired stations protected noise limited contour from the allotted Channel 9 facility can be calculated for masking purposes. Referring to Exhibit



10, it can be seen that the following stations are within the prescribed culling distance and are potentially affected by the proposed facility:

Chan	Call	City/State	Dist(km)	Status	Application	Ref. No.
08	WXGA-TV	WAYCROSS GA	136.9	LIC	BDTV	-0429
09	960920WR	GAINESVILLE FL	294.2	LIC	BDTV	-0308
09	WPGX	PANAMA CITY FL	419.8	LIC	BDTV	-0354
09	WTVM	COLUMBUS GA	297.9	LIC	BDTV	-0406
09	WHMC	CONWAY SC	307.9	LIC	BDTV	-1397
09	WNTV	GREENVILLE SC	319.2	LIC	BDTV	-1403
10	WJXX	ORANGE PARK FL	208.3	LIC	BDTV	-0345

The following post-transition DTV stations listed above are either beyond the site to the nearest cell evaluation distance or are not predicted to receive interference from the proposed WVAN-DT facility:

Chan	Call	City/State	Dist(km)	Status	Application	Ref. No.
09	WPGX	PANAMA CITY FL	419.8	LIC	BDTV	-0354
09	WHMC	CONWAY SC	307.9	LIC	BDTV	-1397
09	WNTV	GREENVILLE SC	319.2	LIC	BDTV	-1403
10	WJXX	ORANGE PARK FL	208.3	LIC	BDTV	-0345

Therefore, the only post-transition DTV stations within the prescribed culling distance that are predicted to receive new interference from the proposed WVAN-DT facility are:

Chan	Call	City/State	Dist(km)	Status	Application	Ref. No.
08	WXGA-TV	WAYCROSS GA	136.9	LIC	BDTV	-0429
09	960920WR	GAINESVILLE FL	294.2	LIC	BDTV	-0308
09	WTVM	COLUMBUS GA	297.9	LIC	BDTV	-0406

It can be seen in the “Before” analysis in Exhibit 11 that 27,038 persons within the WXGA-DT Channel 8 post-transition DTV facility’s protected noise limited contour are predicted to receive interference from one or more of the following post-transition DTV stations, which does not include the proposed WVAN-DT facility but does include the WVAN-DT allotted facility:

7A	FL	JACKSONVILLE	BDTV	0313	LIC
8A	GA	ATHENS	BDTV	0386	LIC
8A	GA	DAWSON	BDTV	0413	LIC
8A	SC	COLUMBIA	BDTV	1391	LIC
9A	GA	SAVANNAH	BDTV	0422	LIC



Referring to the “After” analysis in Exhibit 10, it can be seen that 27,744 persons within the WXGA-DT Channel 8 post-transition DTV facility’s protected noise limited contour are predicted to receive interference from one or more of the following post-transition DTV stations, which includes the proposed WVAN-DT facility but does not include the allotted facility:

7A FL JACKSONVILLE	BDTV	0313	LIC
8A GA ATHENS	BDTV	0386	LIC
8A GA DAWSON	BDTV	0413	LIC
8A SC COLUMBIA	BDTV	1391	LIC
9A GA SAVANNAH	USERRECORD01		APP

Accordingly, the proposed WVAN-DT post-transition DTV facility is predicted to cause 0.166% new interference to the WXGA-DT Channel 8 post-transition DTV facility [(27,744-27,038)/425,569] which rounds up to 0.2%.

Again, referring to the “Before” analysis in Exhibit 11, it can be seen that 8,910 persons within the Gainesville, FL Channel 9 post-transition DTV facility’s protected noise limited contour are predicted to receive interference from one or more of the following post-transition DTV stations, which does not include the proposed WVAN-DT facility but includes the WVAN-DT allotted facility:

9A GA SAVANNAH	BDTV	0422	LIC
10A FL ORANGE PARK	BDTV	0345	LIC

Referring to the “After” analysis in Exhibit 10, it can be seen that 10,456 persons within the Gainesville, FL Channel 9 post-transition DTV facility’s protected noise limited contour are predicted to receive interference from one or more of the following post-transition DTV stations, which does not include the WVAN-DT allotted facility, but includes the proposed WVAN-DT facility:

10A FL ORANGE PARK	BDTV	0345	LIC
9A GA SAVANNAH	USERRECORD01		APP



Accordingly, the proposed WVAN-DT post-transition DTV facility is predicted to cause 0.309% new interference to the Gainesville, FL Channel 9 post-transition DTV facility [(10,456-8,910)/500,900] which rounds down to 0.3%.

Once again, referring to the “Before” analysis in Exhibit 11, it can be seen that 31,406 persons within the WTVM-DT Channel 9 post-transition DTV facility’s protected noise limited contour are predicted to receive interference from one or more of the following post-transition DTV stations, which does not include the proposed WVAN-DT facility but includes the WVAN-DT allotted facility:

8A GA DAWSON	BDTV	0413	LIC
9A AL ANNISTON	BDTV	0019	LIC
9A AL MOBILE	BDTV	0043	LIC
9A FL PANAMA CITY	BDTV	0354	LIC
9A GA SAVANNAH	BDTV	0422	LIC
9A SC GREENVILLE	BDTV	1403	LIC
9A TN CHATTANOOGA	BDTV	1443	LIC

Referring to the “After” analysis in Exhibit 10, it can be seen that 31,744 persons within the WTVM-DT Channel 9 post-transition DTV facility’s protected noise limited contour are predicted to receive interference from one or more of the following post-transition DTV stations, which does not include the WVAN-DT allotted facility but includes the proposed WVAN-DT facility:

8A GA DAWSON	BDTV	0413	LIC
9A AL ANNISTON	BDTV	0019	LIC
9A AL MOBILE	BDTV	0043	LIC
9A FL PANAMA CITY	BDTV	0354	LIC
9A SC GREENVILLE	BDTV	1403	LIC
9A TN CHATTANOOGA	BDTV	1443	LIC
9A GA SAVANNAH	USERRECORD01		APP

Accordingly, the proposed WVAN-DT post-transition DTV facility is predicted to cause 0.053% new interference to the WTVM-DT Channel 9 post-transition DTV facility [(31,744-31,406)/642,296] which rounds up to 0.1%.



**Kessler and Gehman Associates, Inc.**

Telecommunications Consulting Engineers

The interference studies demonstrate that the proposed facility is predicted to cause no more than 0.3% new interference, to all post-transition DTV stations considered in the culling list, which is below the 0.5% new interference standard. Accordingly, the 0.5% new interference standard, pursuant to §V.F. (¶155) of the Third Periodic Review Report and Order, has been satisfied.

### **Exhibits**

Exhibits 1 and 2 represent WVAN's administration data, antenna and antenna structure specifications.

Exhibit 3 depicts the profile view of the proposed antenna on the antenna structure with all the appropriate elevations.

Exhibits 4 (11 deg) and 5 (90 deg) display the elevation pattern and Exhibit 6 displays the elevation pattern tabulation.

Exhibit 7 depicts the location of the WVAN-DT transmitter site on a USGS 7.5-Minute (Series) Topographic map.

Exhibit 8 is a principal community contour map demonstrating that the proposed (maximized) WVAN-DT Channel 9 post-transition DTV facility's F(50,90) 43.0 dBuV/m Principal Community contour would completely encompass the principal community of Savannah, GA.

Exhibit 9 is a contour map comparing the authorized WVAN-DT Channel 9 F(50,90) 36.0 dBuV/m contour (green) and the proposed (maximized) WVAN-DT Channel 9 F(50,90) 36.0 dBuV/m contour (red).



Exhibits 10 and 11 are Longley-Rice interference studies that were computed using a Sun Microsystems SPARC 5 computer work station loaded with the FCC's DTV analysis software. The exhibits demonstrate compliance with the 0.5% new interference standard.

### **Environmental Impact**

The proposed construction would have no significant environmental impact as defined in §1.1307 of the FCC Rules. The digital transmitter, 4-inch transmission line and antenna system shall produce an ERP of 20.0 kW (horizontal polarization). It was determined that the maximum lobe of radiation from the base of the tower would occur at approximately 266.8 feet from the base of the tower (1,283.0-foot radial distance from the antenna center). At approximately 266.8 feet from the base of the tower, the depression angle of the main lobe will be approximately 78° below the horizontal. At that point, the relative field is 0.043 and the power density six feet above the ground will be approximately 0.00001 mW/cm<sup>2</sup>. This equates to only 0.001% of the Maximum Permissible Exposure (MPE) limits for Occupational/Controlled Exposure and only 0.004% of the MPE limits for General Population/Uncontrolled Exposure authorized by the American National Standards Institute (ANSI). Since operation of the proposed (maximized) WVAN-DT Channel 9 post-transition DTV facility will not exceed 5.0% of the MPE limit for Occupational/Controlled Exposure or General Population/Uncontrolled Exposure at any point on the ground, the proposed (maximized) WVAN-DT facility is not considered a "significant contributor" to the RF exposure environment pursuant to OET Bulletin 65, Edition 97-01. Therefore, contributions of exposure from other sources were not accounted for in this analysis. It is safe to conclude that the emissions would be insignificant and well within the maximum allowable requirements.

If other antennas are placed on the tower in the future, the licensee will cooperate with those users by reducing or completely terminating the power to the antenna when maintenance workers are in danger from the electromagnetic radiation emanating from the antenna. It is also understood that additional antennas on the support structure could increase the overall RF exposure levels and it is the responsibility of each licensee to ensure that the total RF exposure





**Kessler and Gehman Associates, Inc.**

Telecommunications Consulting Engineers


resulting from the operation of all antennas on the support structure do not exceed the maximum permissible exposure level at any point on the ground.

### **Certification**

This technical statement was prepared by William T. Godfrey, Telecommunications Consultant with Kessler and Gehman Associates, Inc. having offices in Gainesville, Florida and has been working in the field of radio and television broadcast consulting since 1998. He graduated from the University of North Florida with a Bachelor of Arts degree in Criminal Justice and a minor in Mathematics in 1993. As a Professional in the field of Telecommunications he states under penalty of perjury that the information contained in this report is true and correct to the best of his knowledge and belief.



KESSLER AND GEHMAN ASSOCIATES, INC.

  
WILLIAM T. GODFREY, JR.  
Telecommunications Technical Consultant

19 June, 2008

# WVAN-DT CHANNEL 9 MAXIMIZED DTV FACILITY

SAVANNAH, GEORGIA

## ENGINEERING SPECIFICATIONS

**A. Transmitter Site:**

Geographic coordinates (NAD 27):

North Latitude ..... 32° 08' 48"

West Longitude ..... 81° 37' 05"

Street Address

1.27 km NNE (18.3 degrees) of Pembroke, GA  
(WVAN Tower)

**B. Main Studio Site:**

Street Address ..... 260 14<sup>th</sup> Street N.W. Atlanta, Georgia 30318

**C. Post-Transition Facility:**

DTV Channel ..... Number ..... 9

Frequency ..... 186 - 192 MHz

Offset ..... N/A

**D. Antenna Height:**

Height of Site Above Mean Sea Level (AMSL) ..... 29.0 M

Overall Height of Structure Above Ground ..... 437.4 M

(including all appurtenances)

Overall Height of Structure Above Mean Sea Level ..... 466.4 M

(including all appurtenances)

Height of Site Above Average Terrain ..... 3.9 M

Antenna Height Radiation Center (R/C) Above Ground ..... 384.4 M

Antenna Height R/C Above Average Terrain ..... 388.3 M

Antenna Height R/C Above Mean Sea Level ..... 413.4 M

Average of All Non-Odd Radials ..... 25.1 M

**E. System Parameters – Horizontal Polarization:**

Transmitter Power Required ..... 2.2 kW

Maximum Power Input to Antenna ..... 1.4 kW

Transmission Line Loss ..... 2.13 dB

Transmission Line Efficiency ..... 61.2%

Maximum Antenna Gain in Beam Maximum ..... 11.64 dB

Maximum Antenna Gain in Horizontal Plane ..... 11.43 dB

Maximum Effective Radiated Power ..... 13.01 dBk

In Beam Maximum ..... 20.0 kW

Maximum Effective Radiated Power ..... 12.80 dBk

In Horizontal Plane ..... 19.1 kW

# WVAN-DT CHANNEL 9 MAXIMIZED DTV FACILITY

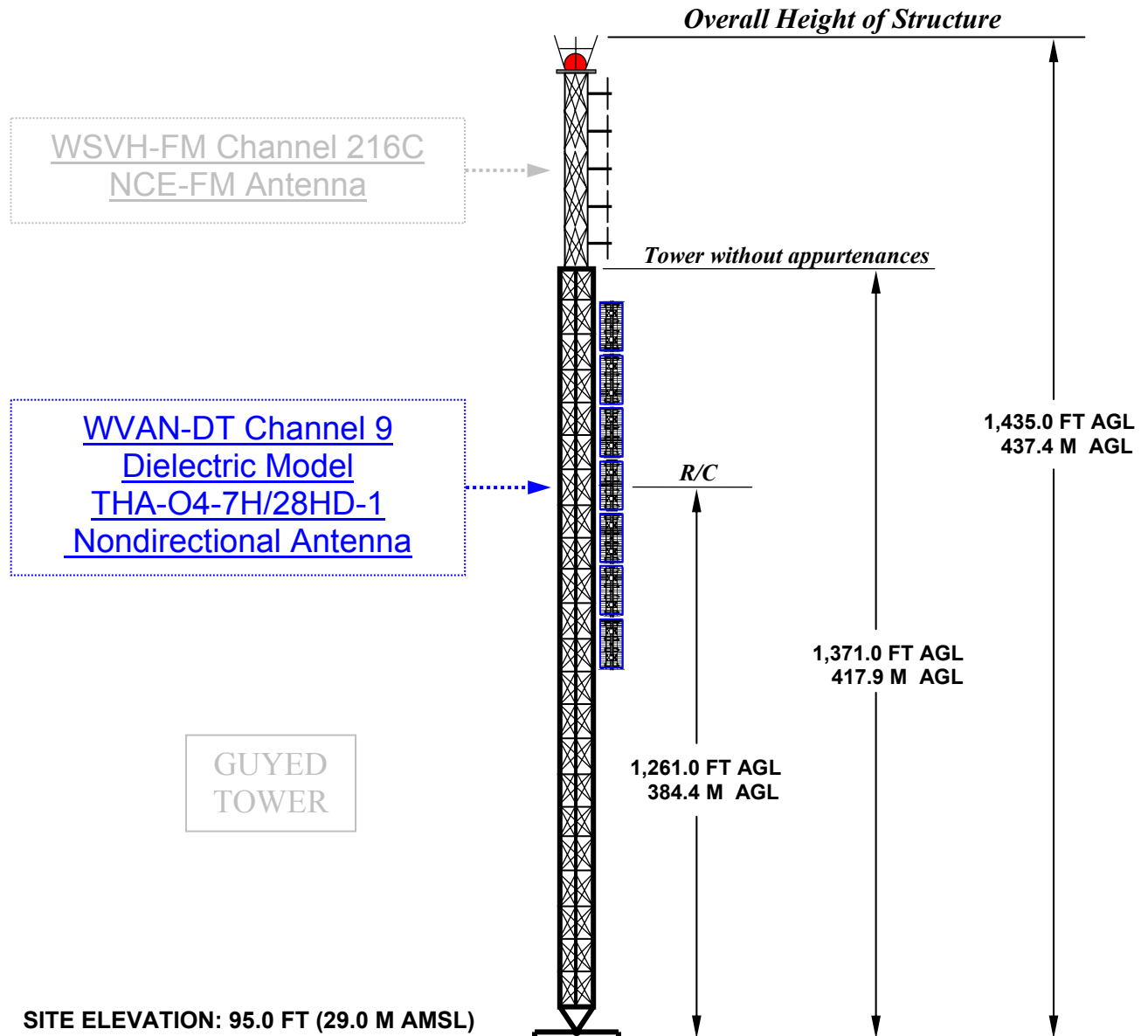
*SAVANNAH, GEORGIA*

## DATA FOR PROPOSED NONDIRECTIONAL TRANSMITTING ANTENNA

- A. **Antenna:** Dielectric Model THA-O4-7H/28HD-1 horizontally polarized, nondirectional antenna.
- B. **Electrical Beam Tilt:** 0.5 degrees
- C. **Mechanical Beam Tilt:** None
- D. 

<b><u>Peak Directional Gain</u></b>	<b><u>Horizontal Polarization</u></b>
Maximum:	14.6 (11.64 dBd)
Horizontal:	13.9 (11.43 dBd)
- E. **Length:** 72.9 feet (22.2 meters)
- F. **Transmitter Power Output (TPO):** 2.2 kW
- G. **Transmission Line:** 4" 50-ohm Heliax®
- H. **Transmission Line Efficiency:** 61.2%
- I. **Transmission Line Length:** 1,315 feet
- J. **Transmission Line Loss:** 0.162 dB/100 ft
- K. **Transmission Line Attenuation:** 2.13 dB

## ELEVATION VIEW



OVERALL HEIGHT AGL: 437.4 M  
OVERALL HEIGHT AMSL: 466.4 M  
RADIATION CENTER AGL: 384.4 M  
RADIATION CENTER AMSL: 413.4 M  
RADIATION CENTER HAAT: 388.3 M  
AVG OF ALL NON-ODD RADIALS: 25.1 M  
SITE HAAT: 3.9 M

### COORDINATES (NAD 27):

N. LATITUDE 32° 08' 48"

W. LONGITUDE 81° 37' 05"

### FAA Aeronautical Study Number:

1261487

**NOTE: NOT TO SCALE**

**KESSLER AND GEHMAN**

TELECOMMUNICATIONS CONSULTING ENGINEERS

507 N.W. 60th Street, Suite C  
Gainesville, Florida 32607

**WVAN-DT CHANNEL 9**

SAVANNAH, GEORGIA

20080619

EXHIBIT 3



Proposal Number	<b>C-00908</b>	Revision:	<b>3</b>
Date	<b>11-Jun-07</b>		
Call Letters	<b>WVAN</b>	Channel	<b>9</b>
Location	<b>Savannah, GA</b>		
Customer	<b>GPTV</b>		
Antenna Type	<b>THA-O4-7H/28HD-1</b>		

## ELEVATION PATTERN

RMS Gain at Main Lobe	<b>14.60 ( 11.64 dB )</b>
RMS Gain at Horizontal	<b>13.90 ( 11.43 dB )</b>
Calculated / Measured	<b>Calculated</b>

Beam Tilt	<b>0.50 deg</b>
Frequency	<b>189.00 MHz</b>
Drawing #	<b>07H146050</b>



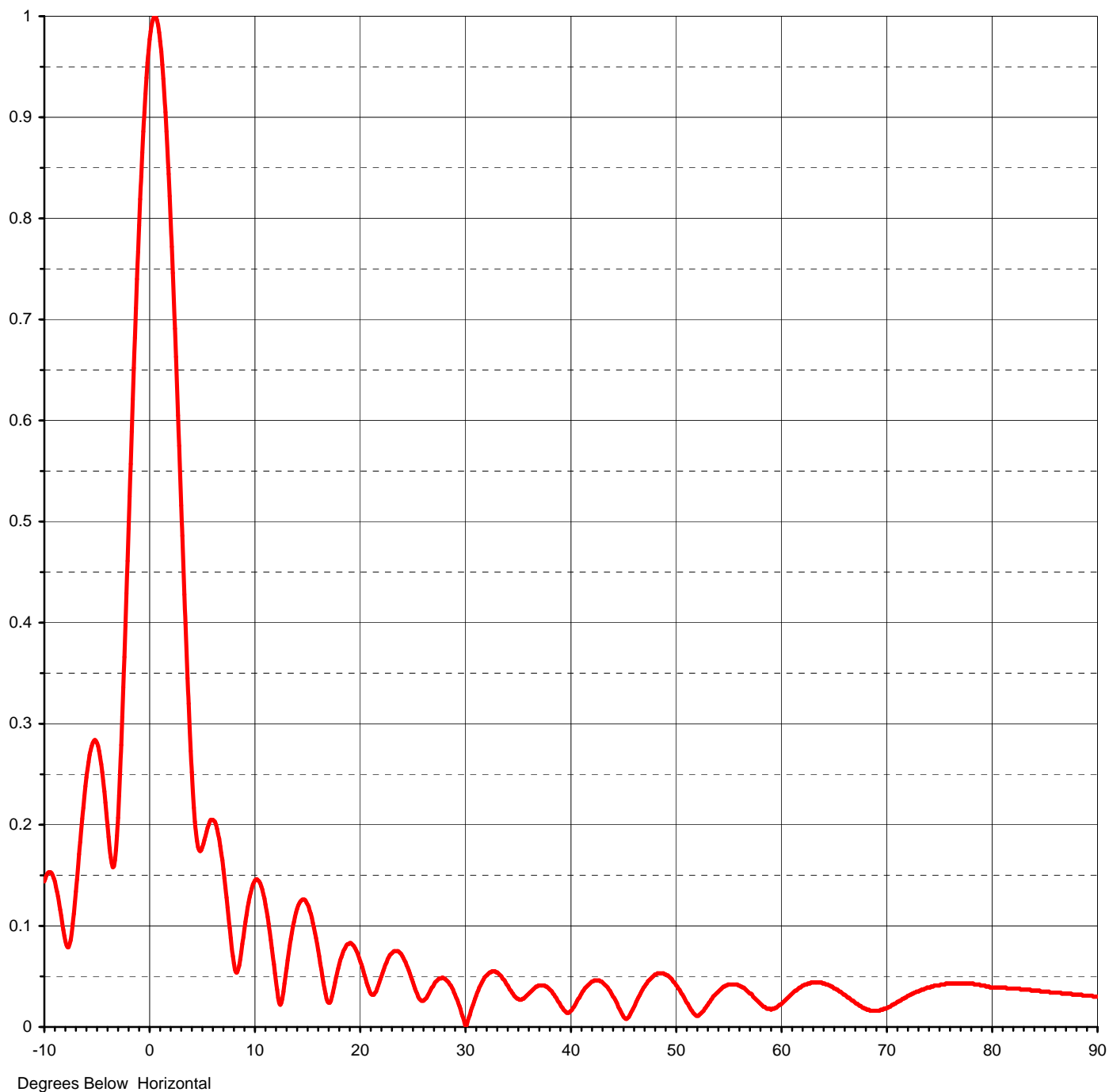


Proposal Number	<b>C-00908</b>	Revision:	<b>3</b>
Date	<b>11-Jun-07</b>		
Call Letters	<b>WVAN</b>	Channel	<b>9</b>
Location	<b>Savannah, GA</b>		
Customer	<b>GPTV</b>		
Antenna Type	<b>THA-O4-7H/28HD-1</b>		

## ELEVATION PATTERN

RMS Gain at Main Lobe	<b>14.60 ( 11.64 dB )</b>
RMS Gain at Horizontal	<b>13.90 ( 11.43 dB )</b>
Calculated / Measured	<b>Calculated</b>

Beam Tilt	<b>0.50 deg</b>
Frequency	<b>189.00 MHz</b>
Drawing #	<b>07H146050-90</b>





Proposal Number **C-00908**      Revision: **3**  
 Date **11-Jun-07**  
 Call Letters **WVAN**      Channel **9**  
 Location **Savannah, GA**  
 Customer **GPTV**  
 Antenna Type **THA-O4-7H/28HD-1**

## TABULATION OF ELEVATION PATTERN

Elevation Pattern Drawing #: **07H146050-90**

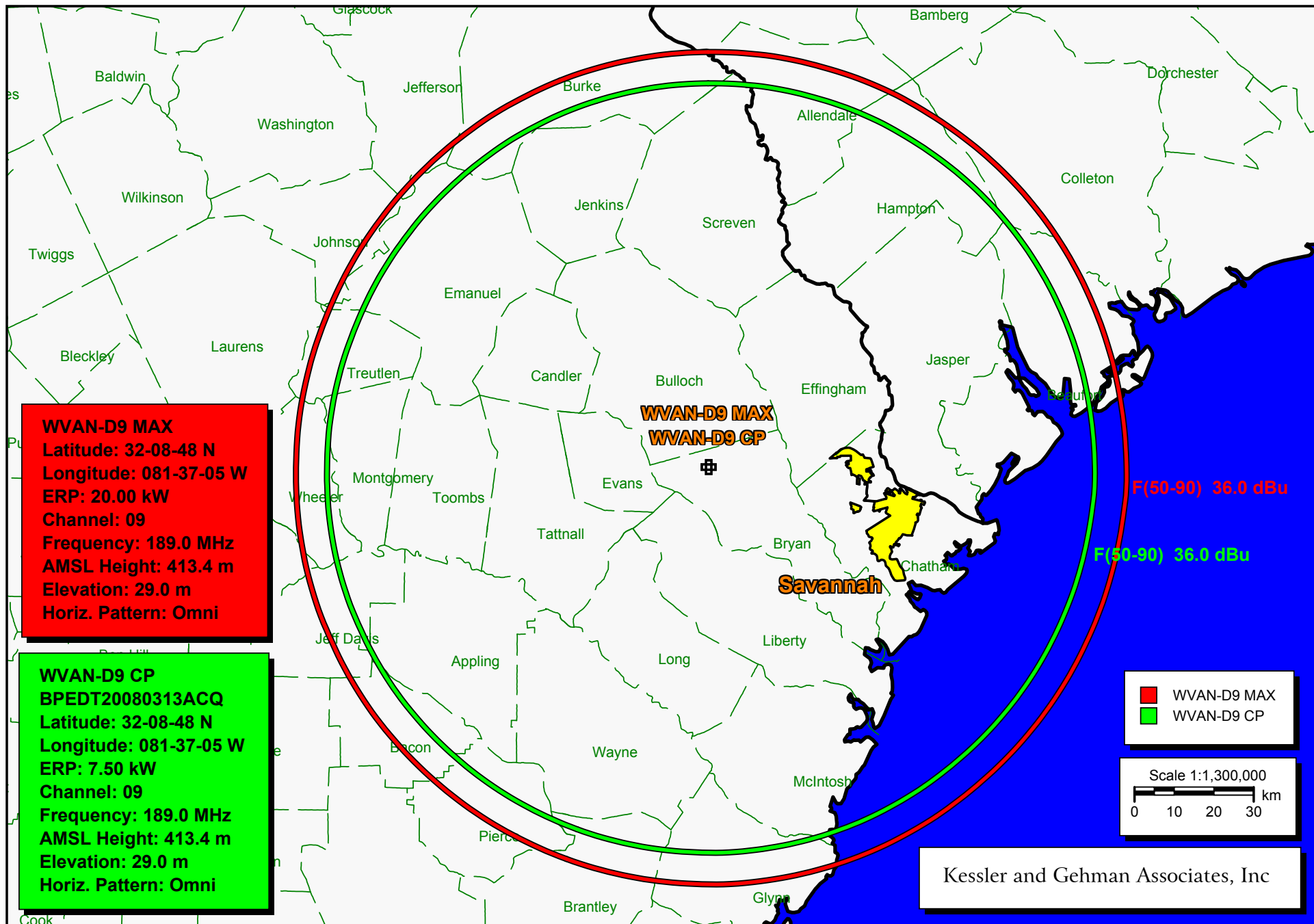
Angle	Field	Angle	Field	Angle	Field	Angle	Field	Angle	Field	Angle	Field
-10.0	0.144	2.4	0.691	10.6	0.142	30.5	0.012	51.0	0.026	71.5	0.028
-9.5	0.153	2.6	0.634	10.8	0.136	31.0	0.028	51.5	0.017	72.0	0.031
-9.0	0.144	2.8	0.575	11.0	0.127	31.5	0.041	52.0	0.011	72.5	0.033
-8.5	0.116	3.0	0.516	11.5	0.094	32.0	0.050	52.5	0.014	73.0	0.035
-8.0	0.085	3.2	0.457	12.0	0.053	32.5	0.054	53.0	0.021	73.5	0.037
-7.5	0.086	3.4	0.399	12.5	0.022	33.0	0.054	53.5	0.028	74.0	0.039
-7.0	0.134	3.6	0.345	13.0	0.050	33.5	0.050	54.0	0.034	74.5	0.041
-6.5	0.195	3.8	0.295	13.5	0.087	34.0	0.042	54.5	0.039	75.0	0.041
-6.0	0.247	4.0	0.252	14.0	0.113	34.5	0.034	55.0	0.042	75.5	0.042
-5.5	0.278	4.2	0.217	14.5	0.125	35.0	0.028	55.5	0.042	76.0	0.043
-5.0	0.281	4.4	0.192	15.0	0.123	35.5	0.028	56.0	0.041	76.5	0.043
-4.5	0.252	4.6	0.178	15.5	0.108	36.0	0.032	56.5	0.039	77.0	0.043
-4.0	0.199	4.8	0.174	16.0	0.082	36.5	0.037	57.0	0.034	77.5	0.043
-3.5	0.158	5.0	0.178	16.5	0.050	37.0	0.041	57.5	0.029	78.0	0.043
-3.0	0.207	5.2	0.185	17.0	0.025	37.5	0.041	58.0	0.024	78.5	0.042
-2.8	0.253	5.4	0.193	17.5	0.034	38.0	0.038	58.5	0.020	79.0	0.041
-2.6	0.307	5.6	0.200	18.0	0.058	38.5	0.032	59.0	0.018	79.5	0.040
-2.4	0.366	5.8	0.205	18.5	0.075	39.0	0.024	59.5	0.019	80.0	0.039
-2.2	0.429	6.0	0.205	19.0	0.082	39.5	0.016	60.0	0.022	80.5	0.039
-2.0	0.493	6.2	0.203	19.5	0.080	40.0	0.015	60.5	0.027	81.0	0.039
-1.8	0.557	6.4	0.196	20.0	0.068	40.5	0.022	61.0	0.032	81.5	0.038
-1.6	0.621	6.6	0.186	20.5	0.051	41.0	0.031	61.5	0.036	82.0	0.038
-1.4	0.682	6.8	0.172	21.0	0.035	41.5	0.039	62.0	0.040	82.5	0.038
-1.2	0.740	7.0	0.156	21.5	0.034	42.0	0.044	62.5	0.042	83.0	0.037
-1.0	0.793	7.2	0.138	22.0	0.047	42.5	0.046	63.0	0.044	83.5	0.037
-0.8	0.842	7.4	0.118	22.5	0.062	43.0	0.045	63.5	0.044	84.0	0.036
-0.6	0.886	7.6	0.098	23.0	0.072	43.5	0.040	64.0	0.043	84.5	0.036
-0.4	0.923	7.8	0.078	23.5	0.075	44.0	0.032	64.5	0.041	85.0	0.035
-0.2	0.954	8.0	0.063	24.0	0.072	44.5	0.023	65.0	0.038	85.5	0.034
0.0	0.977	8.2	0.054	24.5	0.061	45.0	0.012	65.5	0.035	86.0	0.034
0.2	0.992	8.4	0.057	25.0	0.047	45.5	0.009	66.0	0.032	86.5	0.034
0.4	0.999	8.6	0.067	25.5	0.033	46.0	0.018	66.5	0.028	87.0	0.033
0.6	0.999	8.8	0.082	26.0	0.026	46.5	0.029	67.0	0.024	87.5	0.033
0.8	0.991	9.0	0.097	26.5	0.031	47.0	0.039	67.5	0.021	88.0	0.032
1.0	0.975	9.2	0.111	27.0	0.040	47.5	0.046	68.0	0.018	88.5	0.032
1.2	0.952	9.4	0.123	27.5	0.047	48.0	0.051	68.5	0.016	89.0	0.031
1.4	0.922	9.6	0.133	28.0	0.048	48.5	0.053	69.0	0.016	89.5	0.031
1.6	0.886	9.8	0.137	28.5	0.044	49.0	0.052	69.5	0.017	90.0	0.030
1.8	0.844	10.0	0.143	29.0	0.034	49.5	0.049	70.0	0.019		
2.0	0.797	10.2	0.146	29.5	0.021	50.0	0.043	70.5	0.022		
2.2	0.746	10.4	0.145	30.0	0.004	50.5	0.035	71.0	0.025		











WVAN-D9 CP (green) vs. WVAN-D9 Proposed (red)

TV INTERFERENCE and SPACING ANALYSIS PROGRAM

Date: 06-13-2008 Time: 09:07:20

Record Selected for Analysis

WVAN-D9 USERRECORD-01 SAVANNAH GA US  
Channel 09 ERP 20. kW HAAT 388. m RCAMSL 00413 m  
Latitude 032-08-48 Longitude 0081-37-05  
Status APP Zone 2 Border  
Dir Antenna Make usr Model USRPAT01 Beam tilt N Ref Azimuth 0.  
Last update Cutoff date Docket  
Comments  
Applicant

Cell Size for Service Analysis 2.0 km/side

Distance Increments for Longley-Rice Analysis 1.00 km

Facility meets maximum height/power limits

Azimuth (Deg)	ERP (kW)	HAAT (m)	36.0 dBu F(50,90) (km)
0.0	20.000	386.2	104.4
45.0	20.000	392.9	104.9
90.0	20.000	395.5	105.1
135.0	20.000	390.7	104.7
180.0	20.000	393.8	104.9
225.0	20.000	391.0	104.7
270.0	20.000	377.8	103.8
315.0	20.000	375.1	103.6

Evaluation toward Class A Stations

No Spacing violations or contour overlap to Class A stations

Class A Evaluation Complete

SPACING VIOLATION FOUND BETWEEN STATION

WVAN-D9 09 SAVANNAH GA USERRECORD01

and station

SHORT TO: WVANTV 09 SAVANNAH GA BDTV 0422  
 32 -08-48 081 -37-05  
 Req. separation 273.6 Actual separation 0.0 Short 273.6 km

Proposed facility OK to FCC Monitoring Stations

Proposed facility OK toward West Virginia quite zone

Proposed facility OK toward Table Mountain

Proposed facility is beyond the Canadian coordination distance

Proposed facility is beyond the Mexican coordination distance

Proposed station is OK toward AM broadcast stations

\*\*\*\*\*

# Start of Interference Analysis

Channel	Proposed Station Call	City/State	ARN
09	WVAN-D9	SAVANNAH GA	USERRECORD01

## Stations Potentially Affected by Proposed Station

Chan	Call	City/State	Dist(km)	Status	Application	Ref. No.
08	WXGA-TV	WAYCROSS GA	136.9	LIC	BDTV	-0429
09	960920WR	GAINESVILLE FL	294.2	LIC	BDTV	-0308
09	WPGX	PANAMA CITY FL	419.8	LIC	BDTV	-0354
09	WTVM	COLUMBUS GA	297.9	LIC	BDTV	-0406
09	WHMC	CONWAY SC	307.9	LIC	BDTV	-1397
09	WNTV	GREENVILLE SC	319.2	LIC	BDTV	-1403
10	WJXX	ORANGE PARK FL	208.3	LIC	BDTV	-0345

%%%

## Analysis of Interference to Affected Station 1

### Analysis of current record

Channel	Call	City/State	Application	Ref. No.
08	WXGA-TV	WAYCROSS GA	BDTV	-0429

## Stations Potentially Affecting This Station

Chan	Call	City/State	Dist(km)	Status	Application	Ref. No.
07	WJCT	JACKSONVILLE FL	141.8	LIC	BDTV	-0313
07	WDCO-TV	COCHRAN GA	152.9	LIC	BDTV	-0405
08	WGTV	ATHENS GA	322.7	LIC	BDTV	-0386
08	WACS-TV	DAWSON GA	203.8	LIC	BDTV	-0413
08	WOLO-TV	COLUMBIA SC	363.5	LIC	BDTV	-1391
09	960920WR	GAINESVILLE FL	176.9	LIC	BDTV	-0308
09	WVAN-D9	SAVANNAH GA	136.9	APP	USERRECORD-01	

Total scenarios = 1

Result key: 1  
Scenario 1 Affected station 1  
Before Analysis

Results for: 8A GA WAYCROSS BDTV 0429 LIC  
HAAT 286.0 m, ATV ERP 20.0 kW

	POPULATION	AREA (sq km)
within Noise Limited Contour	453613	29579.2
not affected by terrain losses	452607	29353.7
lost to NTSC IX	0	0.0
lost to additional IX by ATV	26140	716.8
lost to ATV IX only	26140	716.8
lost to all IX	26140	716.8

Potential Interfering Stations Included in above Scenario 1

7A FL JACKSONVILLE	BDTV	0313	LIC
8A GA ATHENS	BDTV	0386	LIC
8A GA DAWSON	BDTV	0413	LIC
8A SC COLUMBIA	BDTV	1391	LIC

#### After Analysis

Results for: 8A GA WAYCROSS BDTV 0429 LIC  
HAAT 286.0 m, ATV ERP 20.0 kW

	POPULATION	AREA (sq km)
within Noise Limited Contour	453613	29579.2
not affected by terrain losses	452607	29353.7
lost to NTSC IX	0	0.0
lost to additional IX by ATV	27744	853.7
lost to ATV IX only	27744	853.7
lost to all IX	27744	853.7

Potential Interfering Stations Included in above Scenario 1

7A FL JACKSONVILLE	BDTV	0313	LIC
8A GA ATHENS	BDTV	0386	LIC
8A GA DAWSON	BDTV	0413	LIC
8A SC COLUMBIA	BDTV	1391	LIC
9A GA SAVANNAH	USERRECORD01		APP
*Percent Service lost without proposal:	0.0	to BDTV	0429
*Percent Service lost with proposal:	0.4	to BDTV	0429

#####

Analysis of Interference to Affected Station 2

Analysis of current record

Channel	Call	City/State	Application	Ref. No.
09	960920WR	GAINESVILLE FL	BDTV	-0308

# Stations Potentially Affecting This Station

Chan	Call	City/State	Dist(km)	Status	Application	Ref. No.
08	WXGA-TV	WAYCROSS GA	176.9	LIC	BDTV	-0429
09	WINK-TV	FORT MYERS FL	324.3	LIC	BDTV	-0300
09	WPGX	PANAMA CITY FL	297.3	LIC	BDTV	-0354
09	WTVM	COLUMBUS GA	365.8	LIC	BDTV	-0406
10	WJXX	ORANGE PARK FL	121.5	LIC	BDTV	-0345
10	WTSP	ST. PETERSBURG FL	161.7	LIC	BDTV	-0363
10	WALB	ALBANY GA	225.8	LIC	BDTV	-0384
09	WVAN-D9	SAVANNAH GA	294.2	APP	USERRECORD-01	

Total scenarios = 1

Result key: 2  
Scenario 1 Affected station 2  
Before Analysis

Results for: 9A FL GAINESVILLE BDTV 0308 LIC  
HAAT 278.0 m, ATV ERP 3.2 kW

	POPULATION	AREA (sq km)
within Noise Limited Contour	516596	18752.5
not affected by terrain losses	509810	18635.4
lost to NTSC IX	0	0.0
lost to additional IX by ATV	8501	177.7
lost to ATV IX only	8501	177.7
lost to all IX	8501	177.7

Potential Interfering Stations Included in above Scenario 1

10A FL ORANGE PARK BDTV 0345 LIC

## After Analysis

Results for: 9A FL GAINESVILLE BDTV 0308 LIC  
HAAT 278.0 m, ATV ERP 3.2 kW

	POPULATION	AREA (sq km)
within Noise Limited Contour	516596	18752.5
not affected by terrain losses	509810	18635.4
lost to NTSC IX	0	0.0
lost to additional IX by ATV	10456	262.5
lost to ATV IX only	10456	262.5
lost to all IX	10456	262.5

Potential Interfering Stations Included in above Scenario 1

10A FL ORANGE PARK BDTV 0345 LIC  
9A GA SAVANNAH USERRECORD01 APP  
\*Percent Service lost without proposal: 0.0 to BDTV 0308  
\*Percent Service lost with proposal: 0.4 to BDTV 0308

#####

# Analysis of Interference to Affected Station 3

## Analysis of current record

Channel	Call	City/State	Application	Ref. No.
09	WPGX	PANAMA CITY FL	BDTV	-0354

## Stations Potentially Affecting This Station

Chan	Call	City/State	Dist(km)	Status	Application	Ref. No.
08	WACS-TV	DAWSON GA	195.1	LIC	BDTV	-0413
09	WJSU-TV	ANNISTON AL	366.6	LIC	BDTV	-0019
09	WALA-TV	MOBILE AL	219.2	LIC	BDTV	-0043
09	960920WR	GAINESVILLE FL	297.3	LIC	BDTV	-0308
09	WTVM	COLUMBUS GA	226.0	LIC	BDTV	-0406
10	WDIQ	DOZIER AL	152.6	LIC	BDTV	-0029
10	WALB	ALBANY GA	190.4	LIC	BDTV	-0384
09	WVAN-D9	SAVANNAH GA	419.8	APP	USERRECORD-01	

Proposed station is beyond the site to  
nearest cell evaluation distance

#####

# Analysis of Interference to Affected Station 4

## Analysis of current record

Channel	Call	City/State	Application	Ref. No.
09	WTVM	COLUMBUS GA	BDTV	-0406

## Stations Potentially Affecting This Station

Chan	Call	City/State	Dist(km)	Status	Application	Ref. No.
08	WGTW	ATHENS GA	175.0	LIC	BDTV	-0386
08	WACS-TV	DAWSON GA	47.9	LIC	BDTV	-0413
09	WJSU-TV	ANNISTON AL	209.0	LIC	BDTV	-0019
09	WALA-TV	MOBILE AL	338.9	LIC	BDTV	-0043
09	960920WR	GAINESVILLE FL	365.8	LIC	BDTV	-0308
09	WPGX	PANAMA CITY FL	226.0	LIC	BDTV	-0354
09	WNTV	GREENVILLE SC	364.3	LIC	BDTV	-1403
09	WTVG	CHATTANOOGA TN	319.3	LIC	BDTV	-1443
10	WDIQ	DOZIER AL	174.5	LIC	BDTV	-0029
10	WALB	ALBANY GA	140.3	LIC	BDTV	-0384
10	WXIA-TV	ATLANTA GA	164.7	LIC	BDTV	-0388
09	WVAN-D9	SAVANNAH GA	297.9	APP	USERRECORD-01	

Total scenarios = 1

Result key: 3  
Scenario 1 Affected station 4  
Before Analysis

Results for: 9A GA COLUMBUS BDTV 0406 LIC  
HAAT 503.0 m, ATV ERP 1.0 kW

	POPULATION	AREA (sq km)
within Noise Limited Contour	681101	24071.8
not affected by terrain losses	673702	23567.9
lost to NTSC IX	0	0.0
lost to additional IX by ATV	31336	1132.8
lost to ATV IX only	31336	1132.8
lost to all IX	31336	1132.8

Potential Interfering Stations Included in above Scenario 1

8A GA DAWSON	BDTV	0413	LIC
9A AL ANNISTON	BDTV	0019	LIC
9A AL MOBILE	BDTV	0043	LIC
9A FL PANAMA CITY	BDTV	0354	LIC
9A SC GREENVILLE	BDTV	1403	LIC
9A TN CHATTANOOGA	BDTV	1443	LIC

#### After Analysis

Results for: 9A GA COLUMBUS BDTV 0406 LIC  
 HAAT 503.0 m, ATV ERP 1.0 kW

	POPULATION	AREA (sq km)
within Noise Limited Contour	681101	24071.8
not affected by terrain losses	673702	23567.9
lost to NTSC IX	0	0.0
lost to additional IX by ATV	31744	1193.3
lost to ATV IX only	31744	1193.3
lost to all IX	31744	1193.3

Potential Interfering Stations Included in above Scenario 1

8A GA DAWSON	BDTV	0413	LIC
9A AL ANNISTON	BDTV	0019	LIC
9A AL MOBILE	BDTV	0043	LIC
9A FL PANAMA CITY	BDTV	0354	LIC
9A SC GREENVILLE	BDTV	1403	LIC
9A TN CHATTANOOGA	BDTV	1443	LIC
9A GA SAVANNAH	USERRECORD01		APP
*Percent Service lost without proposal:	0.0	to BDTV	0406
*Percent Service lost with proposal:	0.1	to BDTV	0406

#####

#### Analysis of Interference to Affected Station 5

##### Analysis of current record

Channel	Call	City/State	Application	Ref. No.
09	WHMC	CONWAY SC	BDTV	-1397

##### Stations Potentially Affecting This Station

Chan	Call	City/State	Dist(km)	Status	Application	Ref. No.
08	WGHP	HIGH POINT NC	217.6	LIC	BDTV	-0967
08	WOLO-TV	COLUMBIA SC	153.6	LIC	BDTV	-1391



09	WSKY-TV	MANTEO NC	392.0	LIC	BDTV	-0974
09	WNTV	GREENVILLE SC	322.1	LIC	BDTV	-1403
10	WNCT-TV	GREENVILLE NC	222.1	LIC	BDTV	-0962
10	WIS	COLUMBIA SC	153.0	LIC	BDTV	-1392
09	WVAN-D9	SAVANNAH GA	307.9	APP	USERRECORD-01	

Proposal causes no interference

#####

# Analysis of Interference to Affected Station 6

## Analysis of current record

Channel	Call	City/State	Application	Ref. No.
09	WNTV	GREENVILLE SC	BDTV	-1403

## Stations Potentially Affecting This Station

Chan	Call	City/State	Dist(km)	Status	Application	Ref. No.
08	WGTW	ATHENS GA	203.1	LIC	BDTV	-0386
08	WOLO-TV	COLUMBIA SC	176.5	LIC	BDTV	-1391
09	WJSU-TV	ANNISTON AL	396.8	LIC	BDTV	-0019
09	WTVM	COLUMBUS GA	364.3	LIC	BDTV	-0406
09	WHMC	CONWAY SC	322.1	LIC	BDTV	-1397
09	WTVG	CHATTANOOGA TN	265.6	LIC	BDTV	-1443
10	WXIA-TV	ATLANTA GA	220.1	LIC	BDTV	-0388
10	WIS	COLUMBIA SC	176.6	LIC	BDTV	-1392
10	WBIR-TV	KNOXVILLE TN	182.2	LIC	BDTV	-1460
09	WVAN-D9	SAVANNAH GA	319.2	APP	USERRECORD-01	

Total scenarios = 1

Result key: 4  
Scenario 1 Affected station 6  
Before Analysis

Results for: 9A SC GREENVILLE BDTV 1403 LIC  
HAAT 378.0 m, ATV ERP 65.0 kW

	POPULATION	AREA (sq km)
within Noise Limited Contour	1922638	34015.9
not affected by terrain losses	1755005	30596.7
lost to NTSC IX	0	0.0
lost to additional IX by ATV	982	92.3
lost to ATV IX only	982	92.3
lost to all IX	982	92.3

## Potential Interfering Stations Included in above Scenario 1

9A SC CONWAY	BDTV	1397	LIC
9A TN CHATTANOOGA	BDTV	1443	LIC

## After Analysis

Results for: 9A SC GREENVILLE BDTV 1403 LIC  
HAAT 378.0 m, ATV ERP 65.0 kW

	POPULATION	AREA (sq km)
within Noise Limited Contour	1922638	34015.9
not affected by terrain losses	1755005	30596.7
lost to NTSC IX	0	0.0
lost to additional IX by ATV	1353	144.5
lost to ATV IX only	1353	144.5
lost to all IX	1353	144.5

Potential Interfering Stations Included in above Scenario 1

9A SC CONWAY	BDTV	1397	LIC
9A TN CHATTANOOGA	BDTV	1443	LIC
9A GA SAVANNAH	USERRECORD01		APP
*Percent Service lost without proposal:	0.0	to BDTV	1403
*Percent Service lost with proposal:	0.0	to BDTV	1403

#####

#### Analysis of Interference to Affected Station 7

##### Analysis of current record

Channel	Call	City/State	Application	Ref. No.
10	WJXX	ORANGE PARK FL	BDTV	-0345

##### Stations Potentially Affecting This Station

Chan	Call	City/State	Dist(km)	Status	Application	Ref. No.
09	960920WR	GAINESVILLE FL	121.5	LIC	BDTV	-0308
10	WTSP	ST. PETERSBURG FL	260.0	LIC	BDTV	-0363
10	WALB	ALBANY GA	249.8	LIC	BDTV	-0384
11	WESH	DAYTONA BEACH FL	191.0	LIC	BDTV	-0296
11	WTOC-TV	SAVANNAH GA	198.9	LIC	BDTV	-0423
09	WVAN-D9	SAVANNAH GA	208.3	APP	USERRECORD-01	

Proposed station is beyond the site to  
nearest cell evaluation distance

#####

#### Analysis of Interference to Affected Station 8

##### Analysis of current record

Channel	Call	City/State	Application	Ref. No.
09	WVAN-D9	SAVANNAH GA	USERRECORD-01	

##### Stations Potentially Affecting This Station

Chan	Call	City/State	Dist(km)	Status	Application	Ref. No.
08	WXGA-TV	WAYCROSS GA	136.9	LIC	BDTV	-0429
09	960920WR	GAINESVILLE FL	294.2	LIC	BDTV	-0308
09	WPGX	PANAMA CITY FL	419.8	LIC	BDTV	-0354
09	WTVM	COLUMBUS GA	297.9	LIC	BDTV	-0406

09	WHMC	CONWAY SC	307.9	LIC	BDTV	-1397
09	WNTV	GREENVILLE SC	319.2	LIC	BDTV	-1403
10	WJXX	ORANGE PARK FL	208.3	LIC	BDTV	-0345

Total scenarios = 1

Result key: 5  
 Scenario 1 Affected station 8  
 Before Analysis

Results for: 9A GA SAVANNAH USERRECORD01 APP  
 HAAT 388.0 m, ATV ERP 20.0 kW

	POPULATION	AREA (sq km)
within Noise Limited Contour	836481	34325.7
not affected by terrain losses	835440	34123.7
lost to NTSC IX	0	0.0
lost to additional IX by ATV	4637	476.7
lost to ATV IX only	4637	476.7
lost to all IX	4637	476.7

Potential Interfering Stations Included in above Scenario 1

8A GA WAYCROSS	BDTV	0429	LIC
9A SC CONWAY	BDTV	1397	LIC
9A SC GREENVILLE	BDTV	1403	LIC

#####

FINISHED FINISHED FINISHED FINISHED FINISHED FINISHED

TV INTERFERENCE and SPACING ANALYSIS PROGRAM

Date: 06-13-2008 Time: 09:11:45

Record Selected for Analysis

WVAN-D9 USERRECORD-01 SAVANNAH\_2 GA US  
Channel 09 ERP 20. kW HAAT 388. m RCAMSL 00413 m  
Latitude 032-08-48 Longitude 0081-37-05  
Status APP Zone 2 Border  
Dir Antenna Make usr Model USRPAT01 Beam tilt N Ref Azimuth 0.  
Last update Cutoff date Docket  
Comments  
Applicant

Cell Size for Service Analysis 2.0 km/side

Distance Increments for Longley-Rice Analysis 1.00 km

Facility meets maximum height/power limits

Azimuth (Deg)	ERP (kW)	HAAT (m)	36.0 dBu F(50,90) (km)
0.0	20.000	386.2	104.4
45.0	20.000	392.9	104.9
90.0	20.000	395.5	105.1
135.0	20.000	390.7	104.7
180.0	20.000	393.8	104.9
225.0	20.000	391.0	104.7
270.0	20.000	377.8	103.8
315.0	20.000	375.1	103.6

Evaluation toward Class A Stations

No Spacing violations or contour overlap to Class A stations

Class A Evaluation Complete

SPACING VIOLATION FOUND BETWEEN STATION

WVAN-D9 09 SAVANNAH\_2 GA USERRECORD01

and station

SHORT TO: WVANTV 09 SAVANNAH GA BDTV 0422  
 32 -08-48 081 -37-05  
 Req. separation 273.6 Actual separation 0.0 Short 273.6 km

Proposed facility OK to FCC Monitoring Stations

Proposed facility OK toward West Virginia quite zone

Proposed facility OK toward Table Mountain

Proposed facility is beyond the Canadian coordination distance

Proposed facility is beyond the Mexican coordination distance

Proposed station is OK toward AM broadcast stations

\*\*\*\*\*

# Start of Interference Analysis

Channel	Proposed Station Call	City/State	ARN
09	WVAN-D9	SAVANNAH_2 GA	USERRECORD01

## Stations Potentially Affected by Proposed Station

Chan	Call	City/State	Dist(km)	Status	Application	Ref. No.
08	WXGA-TV	WAYCROSS GA	136.9	LIC	BDTV	-0429
09	960920WR	GAINESVILLE FL	294.2	LIC	BDTV	-0308
09	WPGX	PANAMA CITY FL	419.8	LIC	BDTV	-0354
09	WTVM	COLUMBUS GA	297.9	LIC	BDTV	-0406
09	WVANTV	SAVANNAH GA	0.0	LIC	BDTV	-0422
09	WHMC	CONWAY SC	307.9	LIC	BDTV	-1397
09	WNTV	GREENVILLE SC	319.2	LIC	BDTV	-1403
10	WJXX	ORANGE PARK FL	208.3	LIC	BDTV	-0345

%%%

## Analysis of Interference to Affected Station 1

### Analysis of current record

Channel	Call	City/State	Application	Ref. No.
08	WXGA-TV	WAYCROSS GA	BDTV	-0429

## Stations Potentially Affecting This Station

Chan	Call	City/State	Dist(km)	Status	Application	Ref. No.
07	WJCT	JACKSONVILLE FL	141.8	LIC	BDTV	-0313
07	WDCO-TV	COCHRAN GA	152.9	LIC	BDTV	-0405
08	WGTV	ATHENS GA	322.7	LIC	BDTV	-0386
08	WACS-TV	DAWSON GA	203.8	LIC	BDTV	-0413
08	WOLO-TV	COLUMBIA SC	363.5	LIC	BDTV	-1391
09	960920WR	GAINESVILLE FL	176.9	LIC	BDTV	-0308

09	WVANTV	SAVANNAH GA	136.9	LIC	BDTV	-0422
09	WVAN-D9	SAVANNAH_2 GA	136.9	APP	USERRECORD-01	

Total scenarios = 2

Result key: 1  
 Scenario 1 Affected station 1  
 Before Analysis

Results for: 8A GA WAYCROSS BDTV 0429 LIC  
 HAAT 286.0 m, ATV ERP 20.0 kW

	POPULATION	AREA (sq km)
within Noise Limited Contour	453613	29579.2
not affected by terrain losses	452607	29353.7
lost to NTSC IX	0	0.0
lost to additional IX by ATV	27038	741.0
lost to ATV IX only	27038	741.0
lost to all IX	27038	741.0

Potential Interfering Stations Included in above Scenario 1

7A FL JACKSONVILLE	BDTV	0313	LIC
8A GA ATHENS	BDTV	0386	LIC
8A GA DAWSON	BDTV	0413	LIC
8A SC COLUMBIA	BDTV	1391	LIC
9A GA SAVANNAH	BDTV	0422	LIC

After Analysis

Results for: 8A GA WAYCROSS BDTV 0429 LIC  
 HAAT 286.0 m, ATV ERP 20.0 kW

	POPULATION	AREA (sq km)
within Noise Limited Contour	453613	29579.2
not affected by terrain losses	452607	29353.7
lost to NTSC IX	0	0.0
lost to additional IX by ATV	27744	853.7
lost to ATV IX only	27744	853.7
lost to all IX	27744	853.7

Potential Interfering Stations Included in above Scenario 1

7A FL JACKSONVILLE	BDTV	0313	LIC
8A GA ATHENS	BDTV	0386	LIC
8A GA DAWSON	BDTV	0413	LIC
8A SC COLUMBIA	BDTV	1391	LIC
9A GA SAVANNAH	BDTV	0422	LIC
9A GA SAVANNAH_2	USERRECORD01		APP
*Percent Service lost without proposal:	0.0	to BDTV	0429
*Percent Service lost with proposal:	0.2	to BDTV	0429

Result key: 2  
 Scenario 2 Affected station 1  
 Before Analysis

Results for: 8A GA WAYCROSS BDTV 0429 LIC

HAAT	286.0 m,	ATV ERP	20.0 kW
		POPULATION	AREA (sq km)
within Noise Limited Contour		453613	29579.2
not affected by terrain losses		452607	29353.7
lost to NTSC IX		0	0.0
lost to additional IX by ATV		27038	741.0
lost to ATV IX only		27038	741.0
lost to all IX		27038	741.0

Potential Interfering Stations Included in above Scenario 2

7A FL JACKSONVILLE	BDTV	0313	LIC
8A GA ATHENS	BDTV	0386	LIC
8A GA DAWSON	BDTV	0413	LIC
8A SC COLUMBIA	BDTV	1391	LIC
9A GA SAVANNAH	BDTV	0422	LIC

After Analysis

Results for: 8A GA WAYCROSS BDTV 0429 LIC

HAAT	286.0 m,	ATV ERP	20.0 kW
		POPULATION	AREA (sq km)
within Noise Limited Contour		453613	29579.2
not affected by terrain losses		452607	29353.7
lost to NTSC IX		0	0.0
lost to additional IX by ATV		27744	853.7
lost to ATV IX only		27744	853.7
lost to all IX		27744	853.7

Potential Interfering Stations Included in above Scenario 2

7A FL JACKSONVILLE	BDTV	0313	LIC
8A GA ATHENS	BDTV	0386	LIC
8A GA DAWSON	BDTV	0413	LIC
8A SC COLUMBIA	BDTV	1391	LIC
9A GA SAVANNAH	BDTV	0422	LIC
9A GA SAVANNAH_2	USERRECORD01		APP
*Percent Service lost without proposal:	0.0	to BDTV	0429
*Percent Service lost with proposal:	0.2	to BDTV	0429

#####

Analysis of Interference to Affected Station 2

Analysis of current record

Channel	Call	City/State	Application Ref. No.
09	960920WR	GAINESVILLE FL	BDTV -0308

Stations Potentially Affecting This Station

Chan	Call	City/State	Dist(km)	Status	Application Ref. No.
08	WXGA-TV	WAYCROSS GA	176.9	LIC	BDTV -0429
09	WINK-TV	FORT MYERS FL	324.3	LIC	BDTV -0300
09	WPGX	PANAMA CITY FL	297.3	LIC	BDTV -0354

09	WTVM	COLUMBUS GA	365.8	LIC	BDTV	-0406
09	WVANTV	SAVANNAH GA	294.2	LIC	BDTV	-0422
10	WJXX	ORANGE PARK FL	121.5	LIC	BDTV	-0345
10	WTSP	ST. PETERSBURG FL	161.7	LIC	BDTV	-0363
10	WALB	ALBANY GA	225.8	LIC	BDTV	-0384
09	WVAN-D9	SAVANNAH_2 GA	294.2	APP	USERRECORD-01	

Total scenarios = 2

Result key: 3  
Scenario 1 Affected station 2  
Before Analysis

Results for: 9A FL GAINESVILLE BDTV 0308 LIC  
HAAT 278.0 m, ATV ERP 3.2 kW

	POPULATION	AREA (sq km)
within Noise Limited Contour	516596	18752.5
not affected by terrain losses	509810	18635.4
lost to NTSC IX	0	0.0
lost to additional IX by ATV	8910	234.2
lost to ATV IX only	8910	234.2
lost to all IX	8910	234.2

Potential Interfering Stations Included in above Scenario 1

9A GA SAVANNAH	BDTV	0422	LIC
10A FL ORANGE PARK	BDTV	0345	LIC

After Analysis

Results for: 9A FL GAINESVILLE BDTV 0308 LIC  
HAAT 278.0 m, ATV ERP 3.2 kW

	POPULATION	AREA (sq km)
within Noise Limited Contour	516596	18752.5
not affected by terrain losses	509810	18635.4
lost to NTSC IX	0	0.0
lost to additional IX by ATV	10456	262.5
lost to ATV IX only	10456	262.5
lost to all IX	10456	262.5

Potential Interfering Stations Included in above Scenario 1

9A GA SAVANNAH	BDTV	0422	LIC
10A FL ORANGE PARK	BDTV	0345	LIC
9A GA SAVANNAH_2	USERRECORD01		APP
*Percent Service lost without proposal:	0.0	to BDTV	0308
*Percent Service lost with proposal:	0.3	to BDTV	0308

Result key: 4  
Scenario 2 Affected station 2  
Before Analysis

Results for: 9A FL GAINESVILLE BDTV 0308 LIC  
HAAT 278.0 m, ATV ERP 3.2 kW

	POPULATION	AREA (sq km)
--	------------	--------------



within Noise Limited Contour	516596	18752.5
not affected by terrain losses	509810	18635.4
lost to NTSC IX	0	0.0
lost to additional IX by ATV	8910	234.2
lost to ATV IX only	8910	234.2
lost to all IX	8910	234.2

Potential Interfering Stations Included in above Scenario 2

9A GA SAVANNAH	BDTV	0422	LIC
10A FL ORANGE PARK	BDTV	0345	LIC

After Analysis

Results for: 9A FL GAINESVILLE BDTV 0308 LIC  
HAAT 278.0 m, ATV ERP 3.2 kW

	POPULATION	AREA (sq km)
within Noise Limited Contour	516596	18752.5
not affected by terrain losses	509810	18635.4
lost to NTSC IX	0	0.0
lost to additional IX by ATV	10456	262.5
lost to ATV IX only	10456	262.5
lost to all IX	10456	262.5

Potential Interfering Stations Included in above Scenario 2

9A GA SAVANNAH	BDTV	0422	LIC
10A FL ORANGE PARK	BDTV	0345	LIC
9A GA SAVANNAH_2	USERRECORD01		APP
*Percent Service lost without proposal:	0.0	to BDTV	0308
*Percent Service lost with proposal:	0.3	to BDTV	0308

#####

Analysis of Interference to Affected Station 3

Analysis of current record

Channel	Call	City/State	Application	Ref. No.
09	WPGX	PANAMA CITY FL	BDTV	-0354

Stations Potentially Affecting This Station

Chan	Call	City/State	Dist(km)	Status	Application	Ref. No.
08	WACS-TV	DAWSON GA	195.1	LIC	BDTV	-0413
09	WJSU-TV	ANNISTON AL	366.6	LIC	BDTV	-0019
09	WALA-TV	MOBILE AL	219.2	LIC	BDTV	-0043
09	960920WR	GAINESVILLE FL	297.3	LIC	BDTV	-0308
09	WTVM	COLUMBUS GA	226.0	LIC	BDTV	-0406
09	WVANTV	SAVANNAH GA	419.8	LIC	BDTV	-0422
10	WDIQ	DOZIER AL	152.6	LIC	BDTV	-0029
10	WALB	ALBANY GA	190.4	LIC	BDTV	-0384
09	WVAN-D9	SAVANNAH_2 GA	419.8	APP	USERRECORD-01	

Proposed station is beyond the site to

nearest cell evaluation distance

#####

#### Analysis of Interference to Affected Station 4

Analysis of current record

Channel	Call	City/State	Application	Ref. No.
09	WTVM	COLUMBUS GA	BDTV	-0406

#### Stations Potentially Affecting This Station

Chan	Call	City/State	Dist(km)	Status	Application	Ref. No.
08	WGTW	ATHENS GA	175.0	LIC	BDTV	-0386
08	WACS-TV	DAWSON GA	47.9	LIC	BDTV	-0413
09	WJSU-TV	ANNISTON AL	209.0	LIC	BDTV	-0019
09	WALA-TV	MOBILE AL	338.9	LIC	BDTV	-0043
09	960920WR	GAINESVILLE FL	365.8	LIC	BDTV	-0308
09	WPGX	PANAMA CITY FL	226.0	LIC	BDTV	-0354
09	WVANTV	SAVANNAH GA	297.9	LIC	BDTV	-0422
09	WNTV	GREENVILLE SC	364.3	LIC	BDTV	-1403
09	WTVN	CHATTANOOGA TN	319.3	LIC	BDTV	-1443
10	WDIQ	DOZIER AL	174.5	LIC	BDTV	-0029
10	WALB	ALBANY GA	140.3	LIC	BDTV	-0384
10	WXIA-TV	ATLANTA GA	164.7	LIC	BDTV	-0388
09	WVAN-D9	SAVANNAH_2 GA	297.9	APP	USERRECORD-01	

Total scenarios = 2

Result key: 5  
Scenario 1 Affected station 4  
Before Analysis

Results for: 9A GA COLUMBUS BDTV 0406 LIC  
HAAT 503.0 m, ATV ERP 1.0 kW

	POPULATION	AREA (sq km)
within Noise Limited Contour	681101	24071.8
not affected by terrain losses	673702	23567.9
lost to NTSC IX	0	0.0
lost to additional IX by ATV	31406	1157.0
lost to ATV IX only	31406	1157.0
lost to all IX	31406	1157.0

#### Potential Interfering Stations Included in above Scenario 1

8A GA DAWSON	BDTV	0413	LIC
9A AL ANNISTON	BDTV	0019	LIC
9A AL MOBILE	BDTV	0043	LIC
9A FL PANAMA CITY	BDTV	0354	LIC
9A GA SAVANNAH	BDTV	0422	LIC
9A SC GREENVILLE	BDTV	1403	LIC
9A TN CHATTANOOGA	BDTV	1443	LIC

After Analysis

Results for: 9A GA COLUMBUS BDTV 0406 LIC  
 HAAT 503.0 m, ATV ERP 1.0 kW

	POPULATION	AREA (sq km)
within Noise Limited Contour	681101	24071.8
not affected by terrain losses	673702	23567.9
lost to NTSC IX	0	0.0
lost to additional IX by ATV	31744	1193.3
lost to ATV IX only	31744	1193.3
lost to all IX	31744	1193.3

Potential Interfering Stations Included in above Scenario 1

8A GA DAWSON	BDTV	0413	LIC
9A AL ANNISTON	BDTV	0019	LIC
9A AL MOBILE	BDTV	0043	LIC
9A FL PANAMA CITY	BDTV	0354	LIC
9A GA SAVANNAH	BDTV	0422	LIC
9A SC GREENVILLE	BDTV	1403	LIC
9A TN CHATTANOOGA	BDTV	1443	LIC
9A GA SAVANNAH_2	USERRECORD01		APP
*Percent Service lost without proposal:	0.0	to BDTV	0406
*Percent Service lost with proposal:	0.1	to BDTV	0406

Result key: 6  
 Scenario 2 Affected station 4  
 Before Analysis

Results for: 9A GA COLUMBUS BDTV 0406 LIC  
 HAAT 503.0 m, ATV ERP 1.0 kW

	POPULATION	AREA (sq km)
within Noise Limited Contour	681101	24071.8
not affected by terrain losses	673702	23567.9
lost to NTSC IX	0	0.0
lost to additional IX by ATV	31406	1157.0
lost to ATV IX only	31406	1157.0
lost to all IX	31406	1157.0

Potential Interfering Stations Included in above Scenario 2

8A GA DAWSON	BDTV	0413	LIC
9A AL ANNISTON	BDTV	0019	LIC
9A AL MOBILE	BDTV	0043	LIC
9A FL PANAMA CITY	BDTV	0354	LIC
9A GA SAVANNAH	BDTV	0422	LIC
9A SC GREENVILLE	BDTV	1403	LIC
9A TN CHATTANOOGA	BDTV	1443	LIC

After Analysis

Results for: 9A GA COLUMBUS BDTV 0406 LIC  
 HAAT 503.0 m, ATV ERP 1.0 kW

	POPULATION	AREA (sq km)
within Noise Limited Contour	681101	24071.8
not affected by terrain losses	673702	23567.9
lost to NTSC IX	0	0.0

lost to additional IX by ATV	31744	1193.3
lost to ATV IX only	31744	1193.3
lost to all IX	31744	1193.3

Potential Interfering Stations Included in above Scenario 2

8A GA DAWSON	BDTV	0413	LIC
9A AL ANNISTON	BDTV	0019	LIC
9A AL MOBILE	BDTV	0043	LIC
9A FL PANAMA CITY	BDTV	0354	LIC
9A GA SAVANNAH	BDTV	0422	LIC
9A SC GREENVILLE	BDTV	1403	LIC
9A TN CHATTANOOGA	BDTV	1443	LIC
9A GA SAVANNAH_2	USERRECORD01		APP
*Percent Service lost without proposal:	0.0	to BDTV	0406
*Percent Service lost with proposal:	0.1	to BDTV	0406

#####

Analysis of Interference to Affected Station 5

Analysis of current record

Channel	Call	City/State	Application	Ref. No.
09	WVANTV	SAVANNAH GA	BDTV	-0422

Stations Potentially Affecting This Station

Chan	Call	City/State	Dist(km)	Status	Application	Ref. No.
08	WXGA-TV	WAYCROSS GA	136.9	LIC	BDTV	-0429
09	960920WR	GAINESVILLE FL	294.2	LIC	BDTV	-0308
09	WPGX	PANAMA CITY FL	419.8	LIC	BDTV	-0354
09	WTVM	COLUMBUS GA	297.9	LIC	BDTV	-0406
09	WHMC	CONWAY SC	307.9	LIC	BDTV	-1397
09	WNTV	GREENVILLE SC	319.2	LIC	BDTV	-1403
10	WJXX	ORANGE PARK FL	208.3	LIC	BDTV	-0345
09	WVAN-D9	SAVANNAH_2 GA	0.0	APP	USERRECORD-01	

Total scenarios = 2

Result key: 7

Scenario 1 Affected station 5  
Before Analysis

Results for: 9A GA SAVANNAH BDTV 0422 LIC  
HAAT 320.0 m, ATV ERP 15.2 kW

	POPULATION	AREA (sq km)
within Noise Limited Contour	763228	29421.6
not affected by terrain losses	761799	29227.7
lost to NTSC IX	0	0.0
lost to additional IX by ATV	1910	262.6
lost to ATV IX only	1910	262.6
lost to all IX	1910	262.6

Potential Interfering Stations Included in above Scenario 1

8A GA WAYCROSS	BDTV	0429	LIC
9A FL GAINESVILLE	BDTV	0308	LIC
9A GA COLUMBUS	BDTV	0406	LIC
9A SC CONWAY	BDTV	1397	LIC
9A SC GREENVILLE	BDTV	1403	LIC

#### After Analysis

Results for: 9A GA SAVANNAH BDTV 0422 LIC  
 HAAT 320.0 m, ATV ERP 15.2 kW

	POPULATION	AREA (sq km)
within Noise Limited Contour	763228	29421.6
not affected by terrain losses	761799	29227.7
lost to NTSC IX	0	0.0
lost to additional IX by ATV	753943	28545.0
lost to ATV IX only	753943	28545.0
lost to all IX	753943	28545.0

Potential Interfering Stations Included in above Scenario 1

8A GA WAYCROSS	BDTV	0429	LIC
9A FL GAINESVILLE	BDTV	0308	LIC
9A GA COLUMBUS	BDTV	0406	LIC
9A SC CONWAY	BDTV	1397	LIC
9A SC GREENVILLE	BDTV	1403	LIC
9A GA SAVANNAH_2	USERRECORD01		APP

The following station failed the de minimis interference criteria.

9D GA SAVANNAH\_2 USERRECORD01  
 ERP 20.00 kW HAAT 388.0 m RCAMSL 413.0 m  
 Antenna usr USRPAT01

Due to interference to the following station and scenario: 1

9D GA SAVANNAH BDTV 0422  
 ERP 15.23 kW HAAT 320.0 m RCAMSL 343.0 m  
 Antenna CDB 00000000080230

Percent Service lost without proposal:	0.0	to BDTV	0422
Percent Service lost with proposal:	99.0	to BDTV	0422

Result key: 8  
 Scenario 2 Affected station 5  
 Before Analysis

Results for: 9A GA SAVANNAH BDTV 0422 LIC  
 HAAT 320.0 m, ATV ERP 15.2 kW

	POPULATION	AREA (sq km)
within Noise Limited Contour	763228	29421.6
not affected by terrain losses	761799	29227.7
lost to NTSC IX	0	0.0
lost to additional IX by ATV	1910	262.6
lost to ATV IX only	1910	262.6
lost to all IX	1910	262.6

Potential Interfering Stations Included in above Scenario 2

8A GA WAYCROSS	BDTV	0429	LIC
9A FL GAINESVILLE	BDTV	0308	LIC
9A GA COLUMBUS	BDTV	0406	LIC
9A SC CONWAY	BDTV	1397	LIC
9A SC GREENVILLE	BDTV	1403	LIC

#### After Analysis

Results for: 9A GA SAVANNAH BDTV 0422 LIC

HAAT 320.0 m, ATV ERP 15.2 kW

	POPULATION	AREA (sq km)
within Noise Limited Contour	763228	29421.6
not affected by terrain losses	761799	29227.7
lost to NTSC IX	0	0.0
lost to additional IX by ATV	753943	28545.0
lost to ATV IX only	753943	28545.0
lost to all IX	753943	28545.0

Potential Interfering Stations Included in above Scenario 2

8A GA WAYCROSS	BDTV	0429	LIC
9A FL GAINESVILLE	BDTV	0308	LIC
9A GA COLUMBUS	BDTV	0406	LIC
9A SC CONWAY	BDTV	1397	LIC
9A SC GREENVILLE	BDTV	1403	LIC
9A GA SAVANNAH_2	USERRECORD01		APP

The following station failed the de minimis interference criteria.

9D GA SAVANNAH\_2 USERRECORD01  
 ERP 20.00 kW HAAT 388.0 m RCAMSL 413.0 m  
 Antenna usr USRPAT01

Due to interference to the following station and scenario: 2

9D GA SAVANNAH BDTV 0422  
 ERP 15.23 kW HAAT 320.0 m RCAMSL 343.0 m  
 Antenna CDB 00000000080230

Percent Service lost without proposal:	0.0	to BDTV	0422
Percent Service lost with proposal:	99.0	to BDTV	0422

#####

#### Analysis of Interference to Affected Station 6

##### Analysis of current record

Channel	Call	City/State	Application Ref. No.
09	WHMC	CONWAY SC	BDTV -1397

##### Stations Potentially Affecting This Station

Chan	Call	City/State	Dist(km)	Status	Application Ref. No.
08	WGHP	HIGH POINT NC	217.6	LIC	BDTV -0967

08	WOLO-TV	COLUMBIA SC	153.6	LIC	BDTV	-1391
09	WVANTV	SAVANNAH GA	307.9	LIC	BDTV	-0422
09	WSKY-TV	MANTEO NC	392.0	LIC	BDTV	-0974
09	WNTV	GREENVILLE SC	322.1	LIC	BDTV	-1403
10	WNCT-TV	GREENVILLE NC	222.1	LIC	BDTV	-0962
10	WIS	COLUMBIA SC	153.0	LIC	BDTV	-1392
09	WVAN-D9	SAVANNAH_2 GA	307.9	APP	USERRECORD-01	

Proposal causes no interference

#####

# Analysis of Interference to Affected Station 7

## Analysis of current record

Channel	Call	City/State	Application	Ref. No.
09	WNTV	GREENVILLE SC	BDTV	-1403

## Stations Potentially Affecting This Station

Chan	Call	City/State	Dist(km)	Status	Application	Ref. No.
08	WGTV	ATHENS GA	203.1	LIC	BDTV	-0386
08	WOLO-TV	COLUMBIA SC	176.5	LIC	BDTV	-1391
09	WJSU-TV	ANNISTON AL	396.8	LIC	BDTV	-0019
09	WTVM	COLUMBUS GA	364.3	LIC	BDTV	-0406
09	WVANTV	SAVANNAH GA	319.2	LIC	BDTV	-0422
09	WHMC	CONWAY SC	322.1	LIC	BDTV	-1397
09	WTVC	CHATTANOOGA TN	265.6	LIC	BDTV	-1443
10	WXIA-TV	ATLANTA GA	220.1	LIC	BDTV	-0388
10	WIS	COLUMBIA SC	176.6	LIC	BDTV	-1392
10	WBIR-TV	KNOXVILLE TN	182.2	LIC	BDTV	-1460
09	WVAN-D9	SAVANNAH_2 GA	319.2	APP	USERRECORD-01	

Total scenarios = 2

Result key: 9  
Scenario 1 Affected station 7  
Before Analysis

Results for: 9A SC GREENVILLE BDTV 1403 LIC  
HAAT 378.0 m, ATV ERP 65.0 kW

	POPULATION	AREA (sq km)
within Noise Limited Contour	1922638	34015.9
not affected by terrain losses	1755005	30596.7
lost to NTSC IX	0	0.0
lost to additional IX by ATV	1055	120.4
lost to ATV IX only	1055	120.4
lost to all IX	1055	120.4

## Potential Interfering Stations Included in above Scenario 1

9A GA SAVANNAH	BDTV	0422	LIC
9A SC CONWAY	BDTV	1397	LIC
9A TN CHATTANOOGA	BDTV	1443	LIC

After Analysis

Results for: 9A SC GREENVILLE BDTV 1403 LIC  
 HAAT 378.0 m, ATV ERP 65.0 kW

	POPULATION	AREA (sq km)
within Noise Limited Contour	1922638	34015.9
not affected by terrain losses	1755005	30596.7
lost to NTSC IX	0	0.0
lost to additional IX by ATV	1353	144.5
lost to ATV IX only	1353	144.5
lost to all IX	1353	144.5

Potential Interfering Stations Included in above Scenario 1

9A GA SAVANNAH	BDTV	0422	LIC
9A SC CONWAY	BDTV	1397	LIC
9A TN CHATTANOOGA	BDTV	1443	LIC
9A GA SAVANNAH_2	USERRECORD01		APP
*Percent Service lost without proposal:	0.0	to BDTV	1403
*Percent Service lost with proposal:	0.0	to BDTV	1403

Result key: 10  
 Scenario 2 Affected station 7  
 Before Analysis

Results for: 9A SC GREENVILLE BDTV 1403 LIC  
 HAAT 378.0 m, ATV ERP 65.0 kW

	POPULATION	AREA (sq km)
within Noise Limited Contour	1922638	34015.9
not affected by terrain losses	1755005	30596.7
lost to NTSC IX	0	0.0
lost to additional IX by ATV	1055	120.4
lost to ATV IX only	1055	120.4
lost to all IX	1055	120.4

Potential Interfering Stations Included in above Scenario 2

9A GA SAVANNAH	BDTV	0422	LIC
9A SC CONWAY	BDTV	1397	LIC
9A TN CHATTANOOGA	BDTV	1443	LIC

After Analysis

Results for: 9A SC GREENVILLE BDTV 1403 LIC  
 HAAT 378.0 m, ATV ERP 65.0 kW

	POPULATION	AREA (sq km)
within Noise Limited Contour	1922638	34015.9
not affected by terrain losses	1755005	30596.7
lost to NTSC IX	0	0.0
lost to additional IX by ATV	1353	144.5
lost to ATV IX only	1353	144.5
lost to all IX	1353	144.5

Potential Interfering Stations Included in above Scenario 2

9A GA SAVANNAH	BDTV	0422	LIC
----------------	------	------	-----



9A SC CONWAY	BDTV	1397	LIC
9A TN CHATTANOOGA	BDTV	1443	LIC
9A GA SAVANNAH_2	USERRECORD01		APP
*Percent Service lost without proposal:	0.0	to BDTV	1403
*Percent Service lost with proposal:	0.0	to BDTV	1403

#####

#### Analysis of Interference to Affected Station 8

##### Analysis of current record

Channel	Call	City/State	Application Ref. No.
10	WJXX	ORANGE PARK FL	BDTV -0345

##### Stations Potentially Affecting This Station

Chan	Call	City/State	Dist(km)	Status	Application Ref. No.
09	960920WR	GAINESVILLE FL	121.5	LIC	BDTV -0308
09	WVANTV	SAVANNAH GA	208.3	LIC	BDTV -0422
10	WTSP	ST. PETERSBURG FL	260.0	LIC	BDTV -0363
10	WALB	ALBANY GA	249.8	LIC	BDTV -0384
11	WESH	DAYTONA BEACH FL	191.0	LIC	BDTV -0296
11	WTOC-TV	SAVANNAH GA	198.9	LIC	BDTV -0423
09	WVAN-D9	SAVANNAH_2 GA	208.3	APP	USERRECORD-01

Proposed station is beyond the site to  
nearest cell evaluation distance

#####

#### Analysis of Interference to Affected Station 9

##### Analysis of current record

Channel	Call	City/State	Application Ref. No.
09	WVAN-D9	SAVANNAH_2 GA	USERRECORD-01

##### Stations Potentially Affecting This Station

Chan	Call	City/State	Dist(km)	Status	Application Ref. No.
08	WXGA-TV	WAYCROSS GA	136.9	LIC	BDTV -0429
09	960920WR	GAINESVILLE FL	294.2	LIC	BDTV -0308
09	WPGX	PANAMA CITY FL	419.8	LIC	BDTV -0354
09	WTVM	COLUMBUS GA	297.9	LIC	BDTV -0406
09	WVANTV	SAVANNAH GA	0.0	LIC	BDTV -0422
09	WHMC	CONWAY SC	307.9	LIC	BDTV -1397
09	WNTV	GREENVILLE SC	319.2	LIC	BDTV -1403
10	WJXX	ORANGE PARK FL	208.3	LIC	BDTV -0345

Total scenarios = 1

Result key: 11

Scenario 1 Affected station 9  
Before Analysis

Results for: 9A GA SAVANNAH\_2 USERRECORD01 APP  
HAAT 388.0 m, ATV ERP 20.0 kW

	POPULATION	AREA (sq km)
within Noise Limited Contour	836481	34325.7
not affected by terrain losses	835440	34123.7
lost to NTSC IX	0	0.0
lost to additional IX by ATV	826628	33352.1
lost to ATV IX only	826628	33352.1
lost to all IX	826628	33352.1

Potential Interfering Stations Included in above Scenario 1

8A GA WAYCROSS	BDTV	0429	LIC
9A GA SAVANNAH	BDTV	0422	LIC
9A SC CONWAY	BDTV	1397	LIC
9A SC GREENVILLE	BDTV	1403	LIC

#####

FINISHED FINISHED FINISHED FINISHED FINISHED FINISHED