

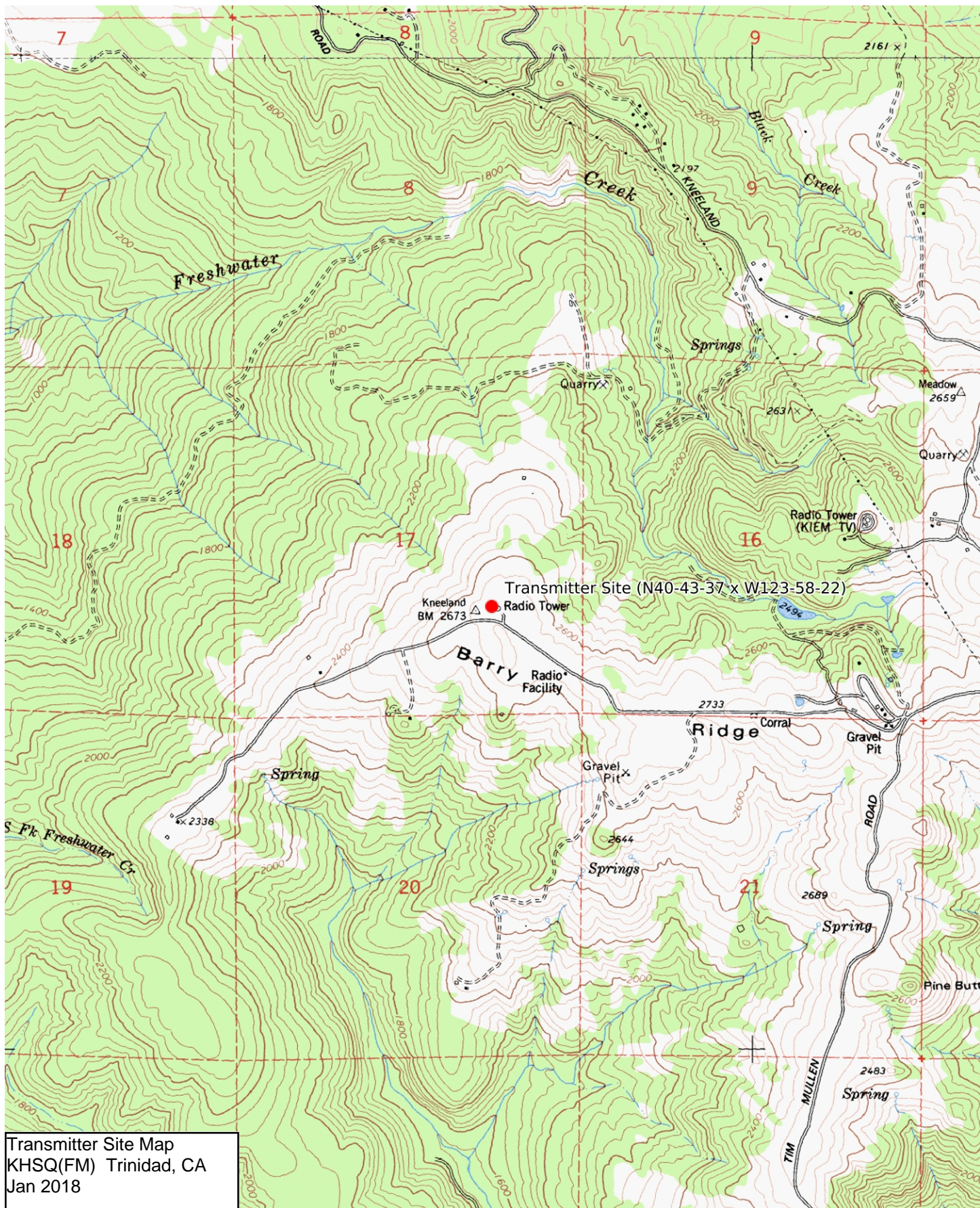
January 2018
KHSQ(FM) Channel 299C3
Trinidad, CA
Allocation Study

The attached spacing study shows that the proposed operation meets the co-channel and adjacent channel spacing requirements for Class C3 stations as prescribed in §73.207 of the Commission's Rules.

```
FMSTUDY.EXE      Copyright 2016, Hatfield & Dawson, LLC      Version 4.01
=====
SEARCH PARAMETERS      FM Database Date: 180118
      Channel: 299C3 107.7 MHz      Page 1
      Latitude: 40 43 37
      Longitude: 123 58 22
      Safety Zone: 50 km
      Job Title: KHSQ 299C3 KNEELAND SITE
```

Call Status	City St	FCC File No.	Channel Freq.	ERP(kW) HAAT(m)	Latitude Longitude	Bearing deg-True	Dist (km)	Req (km)
KCHP-LP LIC	ARCATA CA	BMLL-70403ACL	246L1 97.1	0.093 -41.2	40-52-32 124-05-21	329.4	19.20 0.00	0 LPFM
K296BF LIC	WEAVERVILLE, ETC. CA	BLFT-781026IB	296D 107.1	0.057 DA 656.0	40-43-09 122-58-48	90.3	83.88 0.00	0 TRANS
NEW-T APP	ARCATA CA	BNPFT-70731AFQ	297D 107.3	0.250 DA 0.0	40-43-37 123-58-25	293.7	0.08 0.00	0 TRANS
K298AF LIC	SHASTA CA	BLFT-10701ABY	298D 107.5	0.010 859.0	40-39-15 122-31-26	93.3	122.74 0.00	0 TRANS
KBAE CP	TRINIDAD CA	BPH-70905ACH	299C3 107.7	3.900 258.0	41-05-58 124-07-33	342.8	43.33 -109.67	153 SHORT
KKLC LIC	FALL RIVER MILLS CA	BLED-50826ABC	300C1 107.9	13.000 650.0	40-54-23 121-49-39	83.0 SS	182.09 38.09	144 CLEAR
K300AI LIC	WILLOW CREEK CA	BLFT-10817ACH	300D 107.9	0.010 1121.0	40-52-29 123-43-54	50.9	26.14 0.00	0 TRANS

===== END OF FM SPACING STUDY FOR CHANNEL 299 =====



Transmitter Site Map
KHSQ(FM) Trinidad, CA
Jan 2018

Mercator Projection
NAD27 Conus
USNG Zone 10TDL
CalTopo.com

