

Protection to WRTR from Interference

The site for the proposed facility is located within the protected contour on a channel which is second-adjacent to WRTR, the affected station. We predict the affected station protected contour at the proposed site is 62 dBu F[50,50] as displayed in **Figure 1**. According to established third-adjacent channel contour Undesired-to-Desired (U/D) protection ratios, the contour from the interfering station should be 40 dB higher than the protected contour. Therefore the respective interfering contour for this proposed amendment is 102dBu F[50,10], which is 306 meters from the proposed radiation center. Displayed in **Figure 2** is the site with a dashed blue circle marking the radius of the potential interference area.

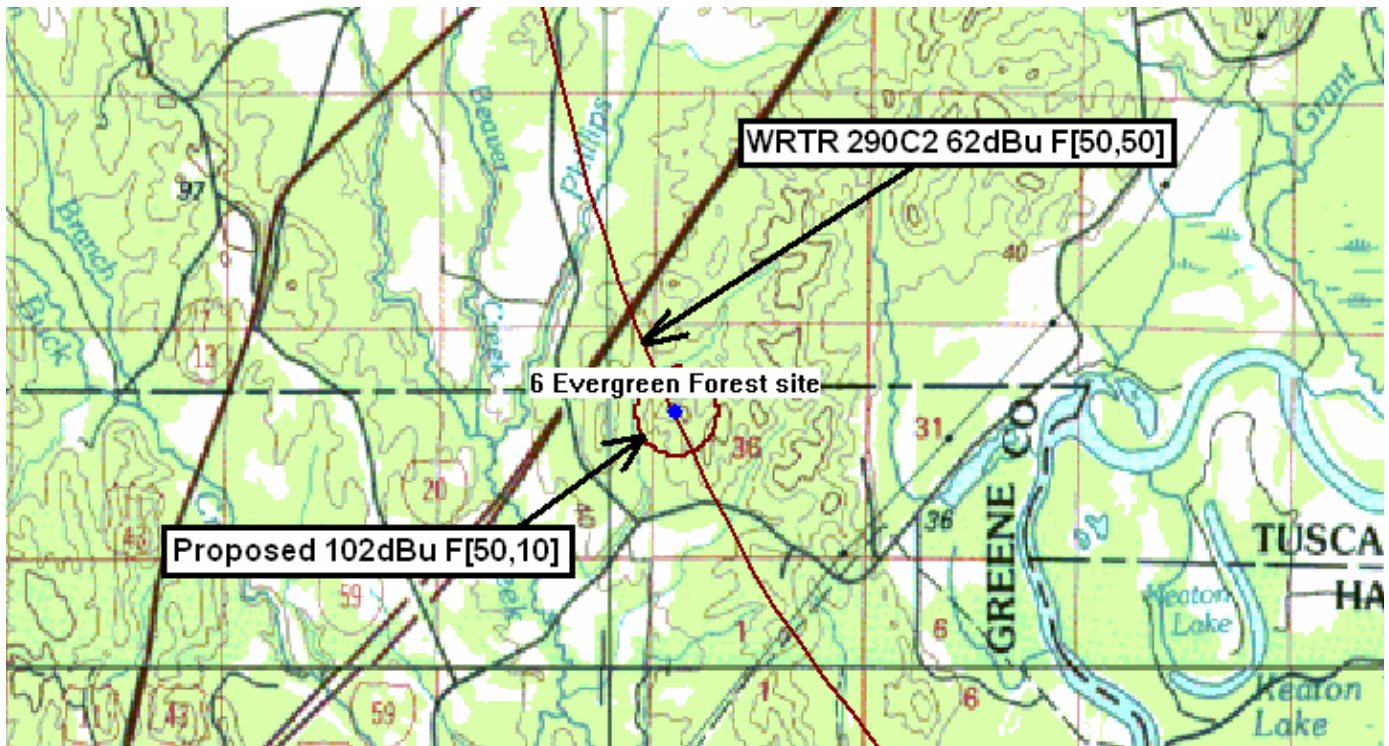


Figure 1

The entire area within that radius is located within Evergreen Forest, which has been clear-cut since the aerial photos were made. There are no public roads, residences, buildings or any other man-made structures where the public might be located within the radius.

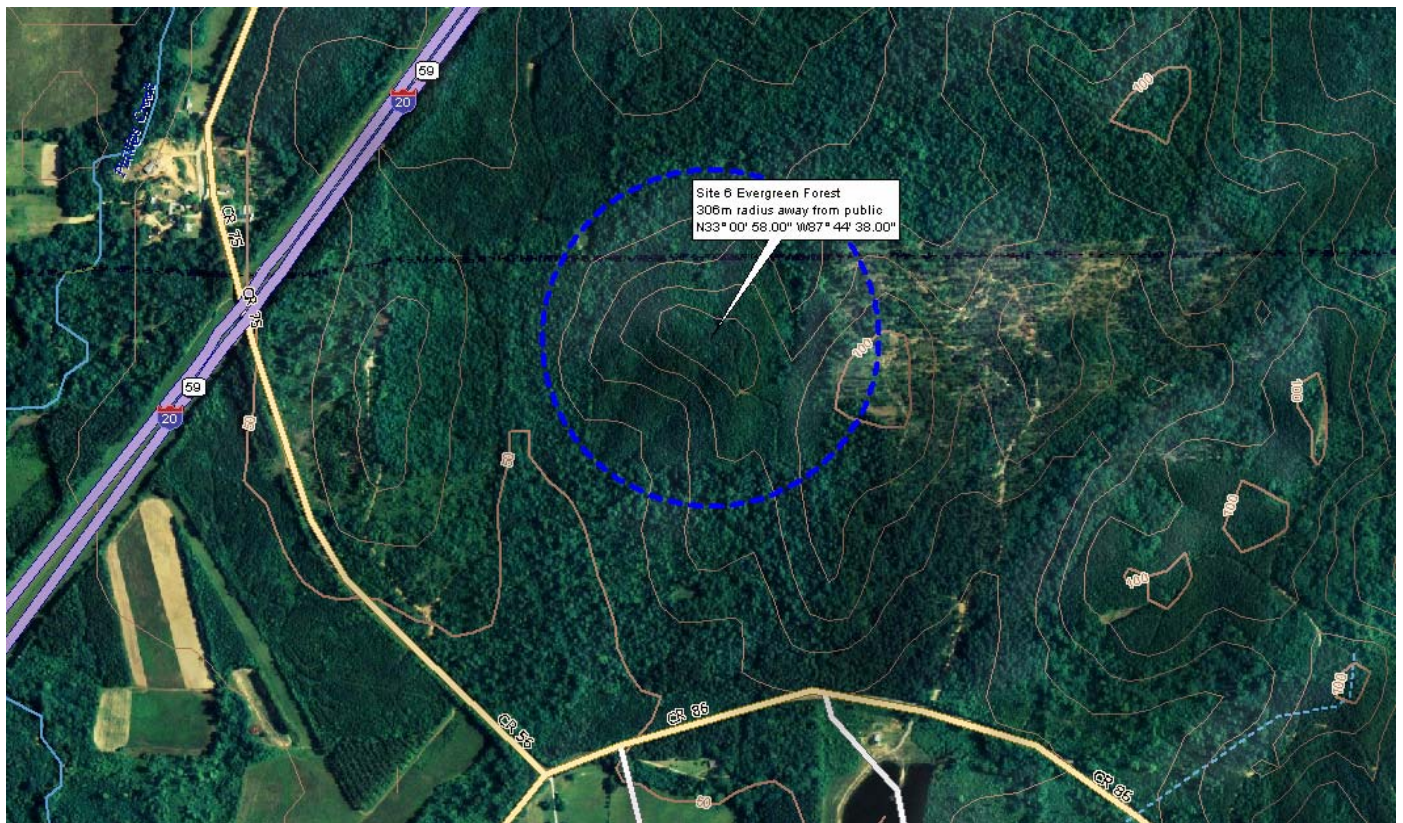


Figure 2

Request for Waiver

Since this proposal complies with 47CFR74.1204(d) based upon the fact that no actual interference will occur due to no population and no public locations within the areas of interference, we hereby request waiver of 47CFR74.1204(a)(3) for separation between this proposed facility and the affected station.