

Oxford, Mississippi

WMAV-FM CHANNEL 212

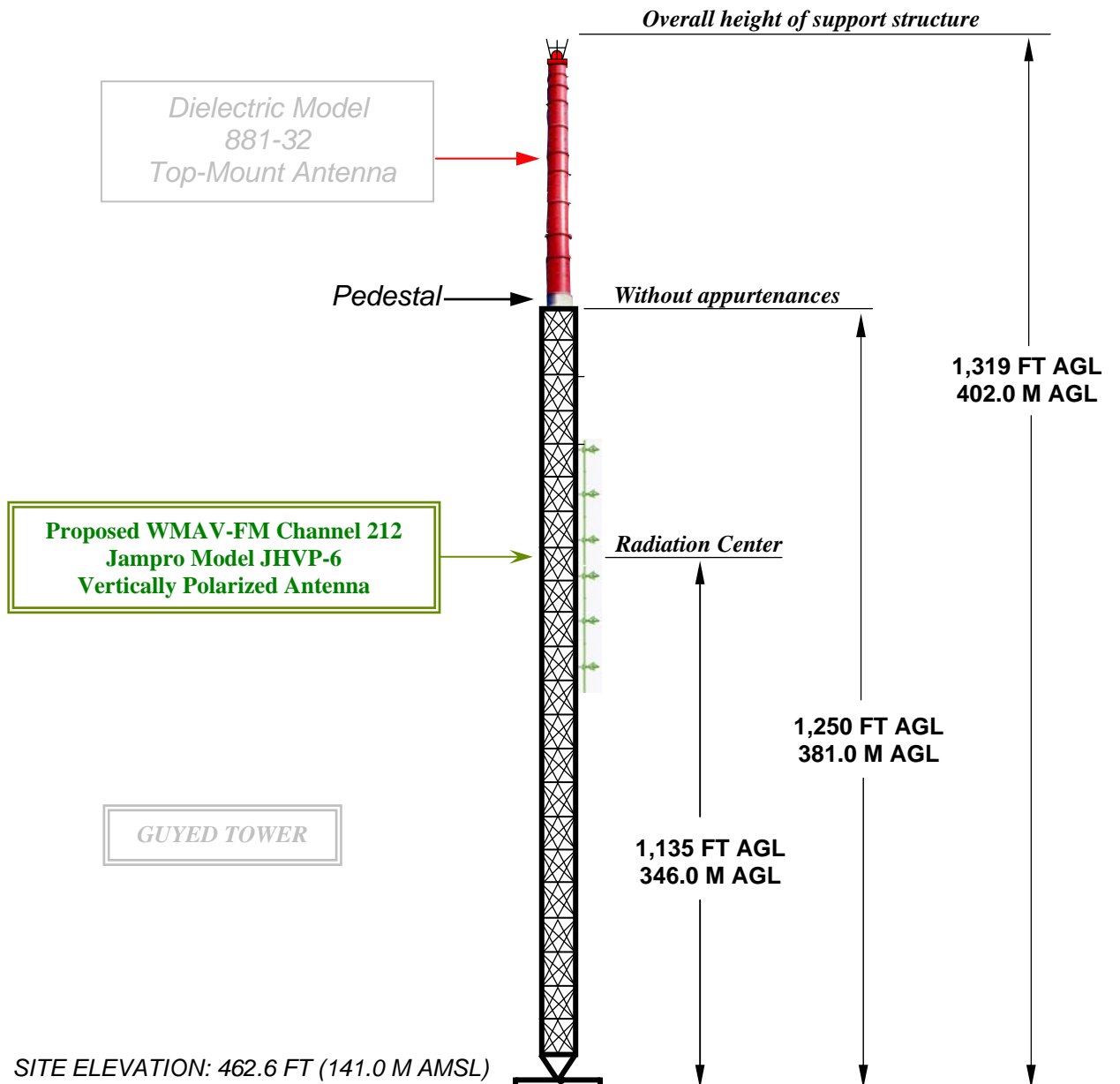
Oxford, Mississippi

DATA FOR PROPOSED NONDIRECTIONAL TRANSMITTING ANTENNA

- A. **Antenna:** Jampro Model JHVP-6 vertically polarized, nondirectional, side-mount antenna.
- B. **Electrical Beam Tilt:** None
- C. **Mechanical Beam Tilt:** None
- D.

<u>Peak Gain</u>	<u>Horizontal Polarization</u>
Maximum:	6.4 (8.05 dB)
Horizontal:	6.4 (8.05 dB)
- E. **Length:** 54.5 feet (16.6 meters)
- F. **Transmitter Power Output (TPO):** 20.0 kW
- G. **Transmission Line:** 3" Rigid
- H. **Transmission Line Efficiency:** 78.4%
- I. **Transmission Line Length:** 1,200 feet (365.8 meters)
- J. **Transmission Line Attenuation:** 0.088 dB/100 ft
- K. **Transmission Line Loss:** 1.06 dB

Support Structure Elevation View



OVERALL HEIGHT AGL:	402.0 M
OVERALL HEIGHT AMSL:	543.0 M
RADIATION CENTER AGL:	346.0 M
RADIATION CENTER AMSL:	487.0 M
RADIATION CENTER HAAT:	378.1 M
AVG OF ALL NON-ODD RADIALS:	108.9 M
SITE HAAT:	32.1 M

COORDINATES (NAD 27):

N. LATITUDE	34° 17' 28"
W. LONGITUDE	89° 42' 21"

Antenna Structure Registration Number:
1041044

NOTE: NOT TO SCALE

KESSLER AND GEHMAN

TELECOMMUNICATIONS CONSULTING ENGINEERS

507 N.W. 60th Street, Suite C
Gainesville, Florida 32607

WMAV-FM CHANNEL 212

Oxford, Mississippi

20090520

EXHIBIT 3