

## **EXHIBIT 12**

### **Waiver Request of Section 74.1204**

K218DX Rapid City, SD 34 Watts ERP

Minor Channel Change to 219 and City Change to Rapid City - February 2008

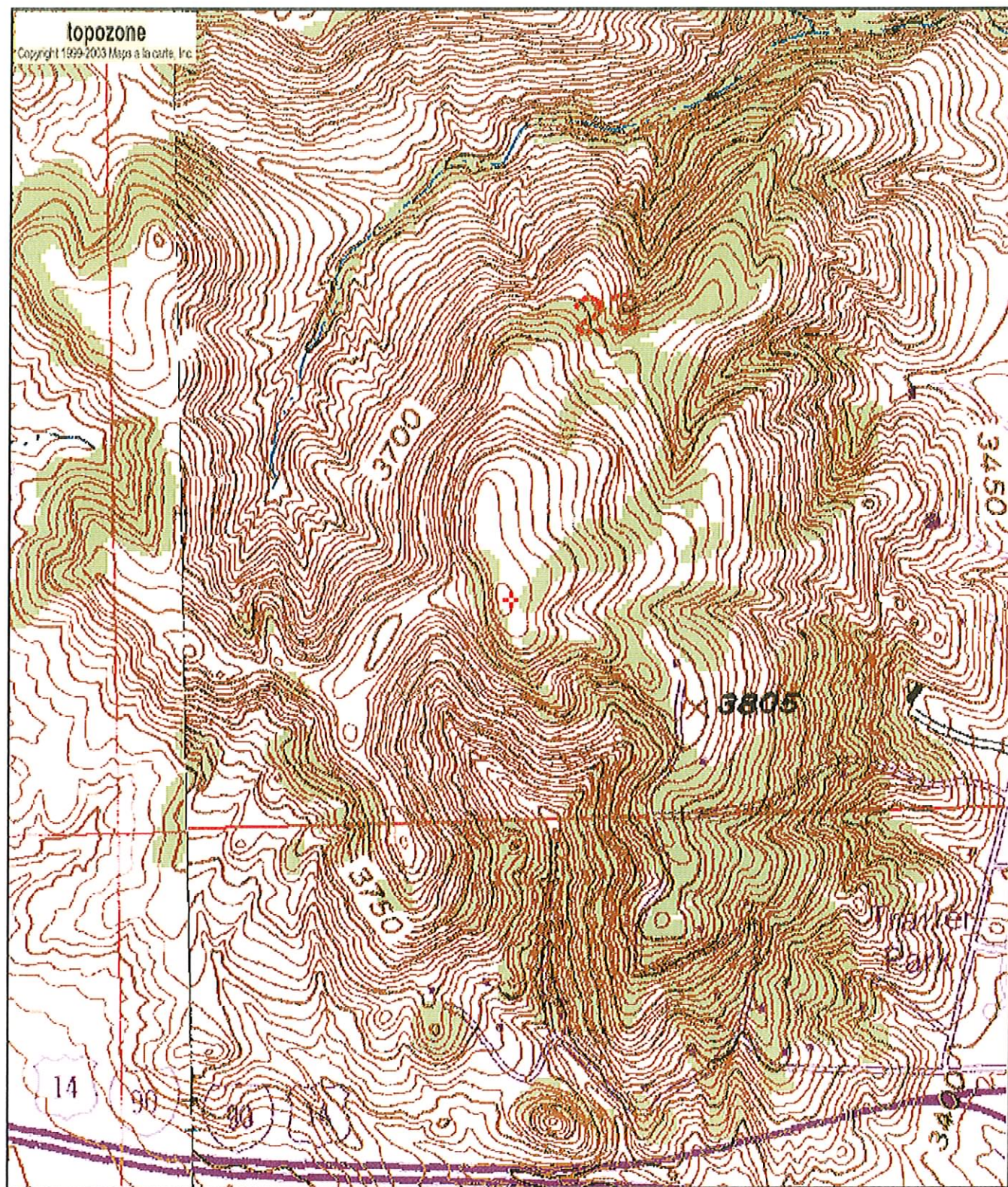
Calvary Chapel of Twin Falls, Inc.

The proposed site is contained entirely inside the service contour of third-adjacent FM Station KQKR Rapid City, SD

### **KQKR**

The proposed site is contained entirely inside the service contour of third-adjacent FM Station KQKR, 222C1, 100kW, Rapid City, SD. The level of least arriving protected F(50,50) signal at the proposed transmitter site is 108.5-dBu. Using the Undesired-to-Desired method for calculating proposed interference, the interfering contour with respect to KQKR is 148.5-dBu (free-space contour method employed). The interfering signal would, in the worst case at the maximum radial, extend 2 meters from the center of radiation, presently licensed at 32 meters AGL. There is no proposal to remove the cable or change the antenna, only a channel change is proposed. Attached is a section of the USGS Rapid City East (SD) Quadrangle showing that this tower is not located in a populated area and there are no residences, businesses or major roadways that are located within the interfering contour, which does not touch the ground. Calvary Chapel of Twin Falls, Inc. respectfully requests a waiver of the FM translator contour overlap regulations with respect to third-adjacent channel KQKR.





0 0.1 0.2 0.3 0.4 0.5 km  
0 0.09 0.18 0.27 0.36 0.45 mi

44° 06' 52"N, 103° 14' 36"W (NAD27)  
**USGS Rapid City East (SD) Quadrangle**  
Projection is UTM Zone 13 NAD83 Datum

M=8.776  
G=1.223