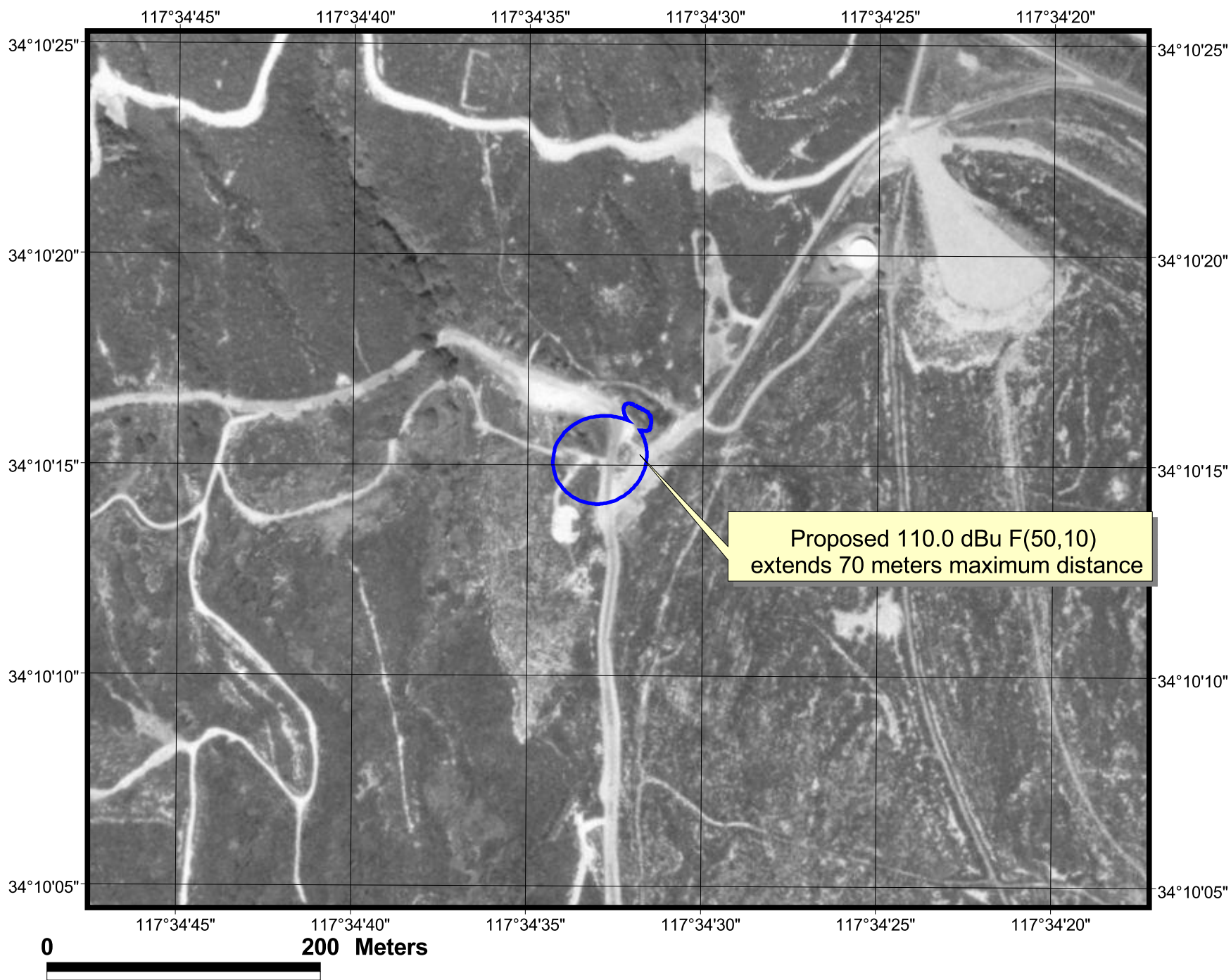


**K212GC, DEVORE, CA : MINOR CHANGE TO LICENSED FACILITY**  
 Minor change showing, and 1st adj. channel contour protection



**K212GC, DEVORE, CA : MINOR CHANGE TO LICENSED FACILITY**  
**Proposed 110.0 dBu interference area with respect to KSGN (no population)**

**Figure 2** 

Table 1

**K212GC Minor Change to Licensed Facility 2011  
Channel Study**

Chan	Class	Call Letters	Type	Status	City	State	Country	Owner	Distance (km)	Bearing TO (deg)	Req. Dist. (km)	Clearance (km)	
209	A	KSGN	FM	LIC	RIVERSIDE	CA	US	GOOD NEWS RADIO	26.8	83.9	44.9	-18.1	(See note and Figure 2)
210	D	K210DL	FX	LIC	APPLE VALLEY	CA	US	CALVARY CHAPEL OF TWIN FAL	55.5	28.3	12.5	43.0	
210	B	KCRW	FM	LIC	SANTA MONICA	CA	US	SANTA MONICA COMMUNITY C	75.3	265.7	47.1	28.2	
211	D	KSAK	FM	LIC	WALNUT	CA	US	MOUNT SAN ANTONIO COMMUN	29.7	242.0	16.9	12.9	
211	D	K211DK	FX	LIC	SANTA ANA	CA	US	THE ASSOCIATION FOR COMML	42.0	186.0	15.2	26.7	
211	D	KBPK	FM	LIC	BUENA PARK	CA	US	BUENA PARK SCHOOL DISTRIC	53.3	229.5	19.3	34.0	
211	B	KLRD	FM	CP	YUCAIPA	CA	US	EDUCATIONAL MEDIA FOUNDA1	64.0	100.8	59.9	4.0	
211	B	KLRD	FM	LIC	YUCAIPA	CA	US	EDUCATIONAL MEDIA FOUNDA1	64.2	101.5	61.1	3.0	
212	D	K205DZ	FX	CP	DEVORE	CA	US	ONDAS DE VIDA, INC.	8.3	56.4	43.4	-35.0	(same as applicant)
212	D	K212FA	FX	LIC	TEMPLE CITY	CA	US	EDUCATIONAL MEDIA FOUNDA1	44.9	276.0	10.9	34.0	
212	D	K212EK	FX	LIC	VICTORVILLE	CA	US	CALVARY CHAPEL OF TWIN FAL	55.5	28.3	16.9	38.6	
214	B	KPFFK	FM	LIC	LOS ANGELES	CA	US	PACIFICA FOUNDATION, INC.	45.7	278.1	95.0	-49.3	(See note and Figure 2)
265	A	KAEH	FM	APP	BEAUMONT	CA	US	MBR LICENSEE LLC	59.9	114.5	10.0	49.9	
266	B	KRTH	FM	LIC	LOS ANGELES	CA	US	CBS RADIO EAST INC.	45.6	277.9	15.0	30.6	

**NOTE:**

**(with respect to KSGN)** 3rd adjacent KSGN has a field strength of 70.0 dBu F(50,50) at the proposed K205DZ site. Therefore K205DZ's interfering contour is the 110.0 dBu F(50,10) contour. K205DZ's 110.0 dBu F(50,10) interfering contour does not contain any structures or population. Therefore this proposal is compliant with the allowance of Rule 74.1204(d).

**(with respect to KPFFK)** 2nd adjacent KPFFK has a field strength of 80.78 dBu F(50,50) at the proposed K205DZ site. Since this field strength is greater than that of KSGN (mentioned above) any potential to KSGN is a "worst-case" potential relative to KPFFK which has higher field strength. Therefore this proposal is compliant with the allowance of Rule 74.1204(d).

## Radiofrequency Electromagnetic Exposure Analysis

Source	Height AGL(m)	Antenna type	Bays	Horizontal ERP (kw)	Vertical ERP (kw)	Power Density $\mu\text{W}/\text{cm}^2$ at 2 meters AGL				
						within 10 meters distance	% controlled environment limit (1000 $\mu\text{W}/\text{cm}^2$ )	Max. PD	% uncontrolled environment limit (200 $\mu\text{W}/\text{cm}^2$ )	Distance to maximum PD (m)
PROPOSED	9	EPA (dipole - worst case)	1	0.000	0.010	6.5	0.7%	6.5	3.3%	1.6
						6.5	<b>0.7%</b>	6.5	<b>3.3%</b>	1.6

The proposed facility is excluded from environmental processing under 47. C.F.R. Section 1.1306 (i.e., The facility will not have a significant environmental impact and complies with the maximum permissible radiofrequency electromagnetic exposure limits for controlled and uncontrolled environments).

Calculations made using FCC FM Model v2.10 Beta