

July 8, 2011

P07052011

Mr. Jim Withers
Pacific Broadcasting of Missouri, LLC
1921 Crampton Ct.
Chesterfield, MO. 63017-8038

RE: REPORT ON ANTENNA ORIENTATION OF KYRK TOWER ANTENNA

Dear Mr. Withers:

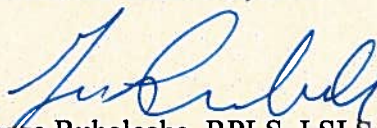
We conducted a survey of the orientation on the above referenced antenna on Friday, July 1, 2011 and confirmed that the orientation of the antenna is on an Azimuth of 310 degrees based on the information provided by you.

We conducted our survey using the north guy wires being on an Azimuth of 0 degrees as relayed to us by you and stated by you as being determined from a previous survey. Using this orientation, we then surveyed control points that were on a 0 degree Azimuth with the antenna tower and one on a 310 degree Azimuth with the proposed location and orientation of the antenna. Using these two control points, we verified that the antenna, as set up, is on an Azimuth of 310 degrees.

We're attaching the drawings provided by you as part of this report showing the orientation of the guy wires and the orientation of the antenna, which you provided as the basis for this survey.

Respectfully submitted,

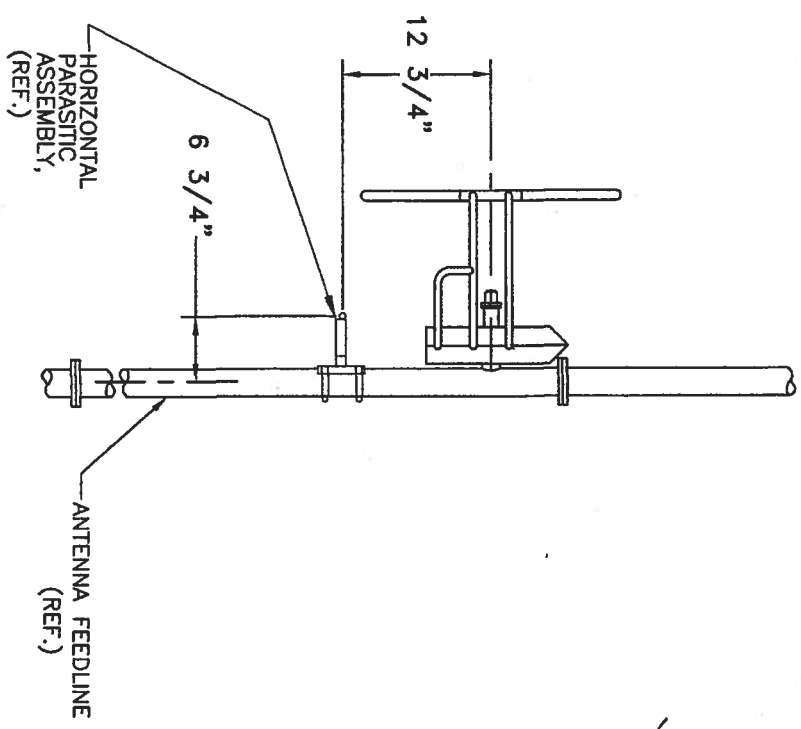
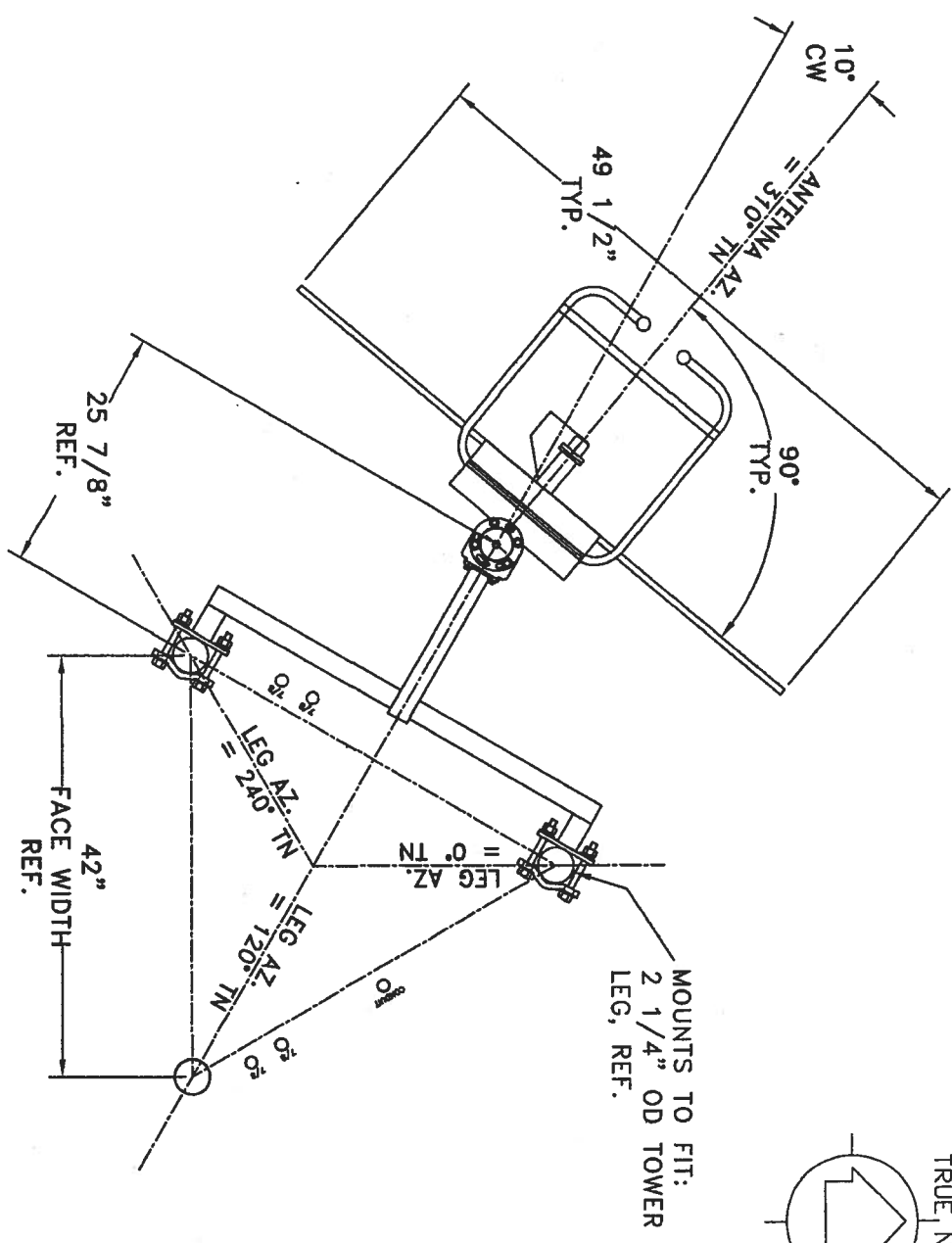
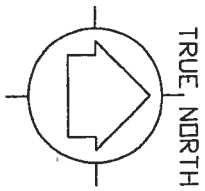
HDR ENGINEERING, INC.



George Rubalcaba, RPLS, LSLS
Survey Group Manager



Attachments: Guy wire and antenna orientation drawings (2)



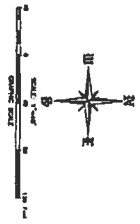
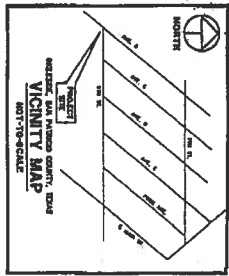
SIDE VIEW

TOP VIEW
TOWER: ALLIED 42" FACE

ANTENNA HEADING 310° TRUE NORTH

SHIVELY LABS			
A DIVISION OF HOWELL LABORATORIES INC., BRIDGTON, MAINE			
SHOP ORDER:	FREQUENCY:	SCALE:	DRAWN BY:
29127	106.5	N.T.S.	ASP
MODEL-6810-5-SS-DIRECTIONAL ANTENNA		APPROVED BY: DAB	
TITLE:			
DATE:			
6/21/11	FIGURE 2		

FIGURE 2



4,728 ACRES
PER VOL. 205, PG. 89
S.F.C.C.

4,728 ACRES
PER S.F.C.C. NO. 459869

4,728 ACRES
PER VOL. 205, PG. 89
S.F.C.C.

W. M. McDONOUGH SURVEY, ABSTRACT NO. 184
SAN PATRICIO COUNTY, TEXAS

4,728 ACRES
PER VOL. 205, PG. 89
S.F.C.C. NO. 459869

4,728 ACRES
PER VOL. 205, PG. 89
S.F.C.C.

SECTION	ACRES	OWNER
1	1.19	W. M. McDONOUGH
2	1.19	W. M. McDONOUGH
3	1.19	W. M. McDONOUGH
4	1.19	W. M. McDONOUGH
5	1.19	W. M. McDONOUGH
6	1.19	W. M. McDONOUGH
7	1.19	W. M. McDONOUGH
8	1.19	W. M. McDONOUGH
9	1.19	W. M. McDONOUGH
10	1.19	W. M. McDONOUGH
11	1.19	W. M. McDONOUGH
12	1.19	W. M. McDONOUGH
13	1.19	W. M. McDONOUGH
14	1.19	W. M. McDONOUGH
15	1.19	W. M. McDONOUGH
16	1.19	W. M. McDONOUGH
17	1.19	W. M. McDONOUGH
18	1.19	W. M. McDONOUGH
19	1.19	W. M. McDONOUGH
20	1.19	W. M. McDONOUGH
21	1.19	W. M. McDONOUGH
22	1.19	W. M. McDONOUGH
23	1.19	W. M. McDONOUGH
24	1.19	W. M. McDONOUGH



SURVEYOR'S CERTIFICATION
I, the undersigned, being a duly qualified Surveyor of the State of Texas, do hereby certify that the foregoing is a true and correct copy of the original survey as the same appears in my records.

GENERAL NOTES

1. The survey was made by the undersigned, or by a duly qualified Surveyor, and the same is a true and correct copy of the original survey as the same appears in my records.
2. The survey was made by the undersigned, or by a duly qualified Surveyor, and the same is a true and correct copy of the original survey as the same appears in my records.
3. The survey was made by the undersigned, or by a duly qualified Surveyor, and the same is a true and correct copy of the original survey as the same appears in my records.
4. The survey was made by the undersigned, or by a duly qualified Surveyor, and the same is a true and correct copy of the original survey as the same appears in my records.
5. The survey was made by the undersigned, or by a duly qualified Surveyor, and the same is a true and correct copy of the original survey as the same appears in my records.
6. The survey was made by the undersigned, or by a duly qualified Surveyor, and the same is a true and correct copy of the original survey as the same appears in my records.
7. The survey was made by the undersigned, or by a duly qualified Surveyor, and the same is a true and correct copy of the original survey as the same appears in my records.
8. The survey was made by the undersigned, or by a duly qualified Surveyor, and the same is a true and correct copy of the original survey as the same appears in my records.
9. The survey was made by the undersigned, or by a duly qualified Surveyor, and the same is a true and correct copy of the original survey as the same appears in my records.
10. The survey was made by the undersigned, or by a duly qualified Surveyor, and the same is a true and correct copy of the original survey as the same appears in my records.
11. The survey was made by the undersigned, or by a duly qualified Surveyor, and the same is a true and correct copy of the original survey as the same appears in my records.
12. The survey was made by the undersigned, or by a duly qualified Surveyor, and the same is a true and correct copy of the original survey as the same appears in my records.
13. The survey was made by the undersigned, or by a duly qualified Surveyor, and the same is a true and correct copy of the original survey as the same appears in my records.
14. The survey was made by the undersigned, or by a duly qualified Surveyor, and the same is a true and correct copy of the original survey as the same appears in my records.
15. The survey was made by the undersigned, or by a duly qualified Surveyor, and the same is a true and correct copy of the original survey as the same appears in my records.
16. The survey was made by the undersigned, or by a duly qualified Surveyor, and the same is a true and correct copy of the original survey as the same appears in my records.
17. The survey was made by the undersigned, or by a duly qualified Surveyor, and the same is a true and correct copy of the original survey as the same appears in my records.
18. The survey was made by the undersigned, or by a duly qualified Surveyor, and the same is a true and correct copy of the original survey as the same appears in my records.
19. The survey was made by the undersigned, or by a duly qualified Surveyor, and the same is a true and correct copy of the original survey as the same appears in my records.
20. The survey was made by the undersigned, or by a duly qualified Surveyor, and the same is a true and correct copy of the original survey as the same appears in my records.
21. The survey was made by the undersigned, or by a duly qualified Surveyor, and the same is a true and correct copy of the original survey as the same appears in my records.
22. The survey was made by the undersigned, or by a duly qualified Surveyor, and the same is a true and correct copy of the original survey as the same appears in my records.
23. The survey was made by the undersigned, or by a duly qualified Surveyor, and the same is a true and correct copy of the original survey as the same appears in my records.
24. The survey was made by the undersigned, or by a duly qualified Surveyor, and the same is a true and correct copy of the original survey as the same appears in my records.

Windcross Earth Services, Inc.
Surveyors
4,728 ACRES ON 20441 SQUARE FEET
W. M. McDONOUGH SURVEY
SAN PATRICIO COUNTY, TEXAS
ABSTRACT NO. 184
S.F.C.C. NO. 459869