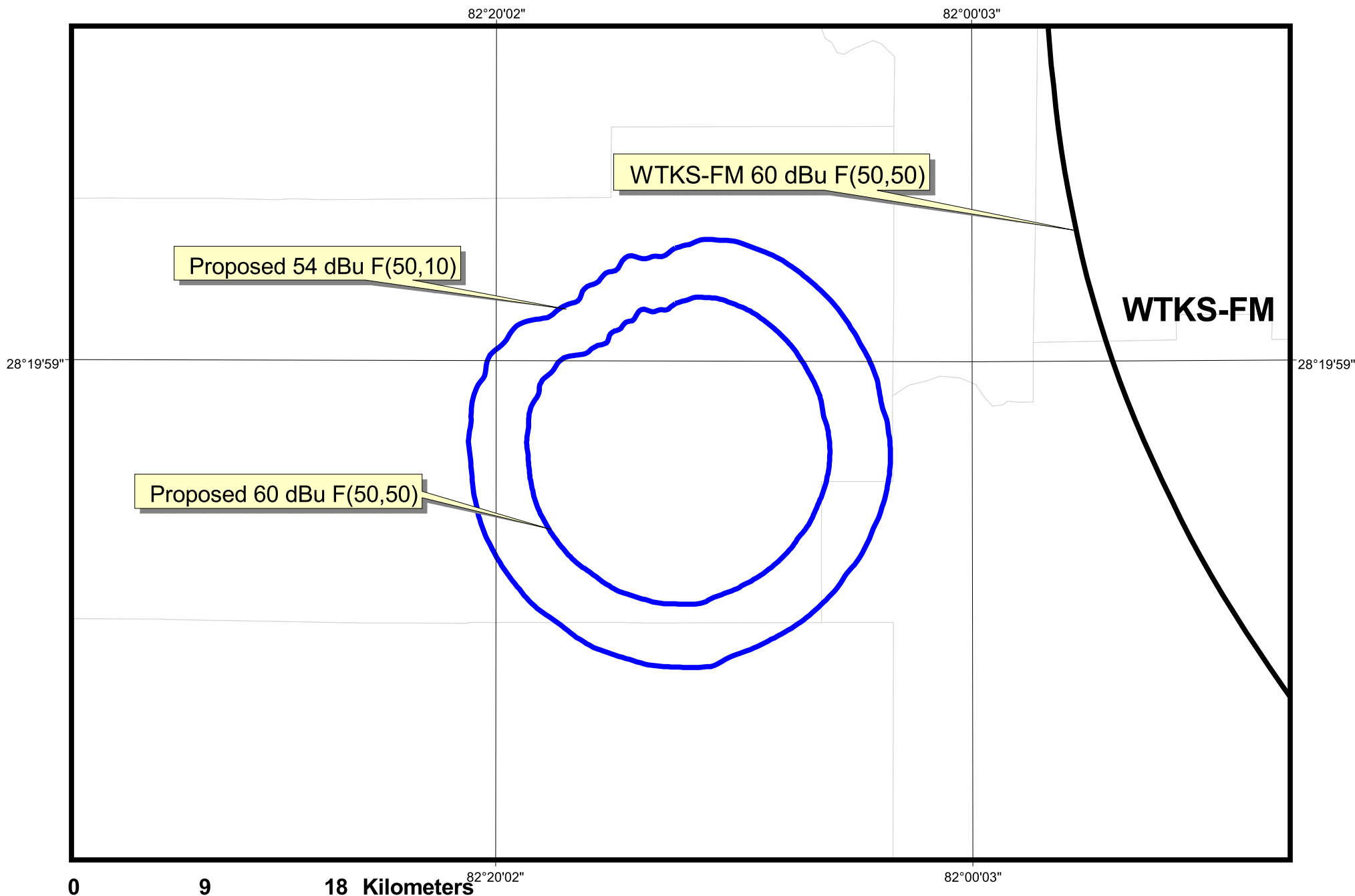


MINOR CHANGE TO LICENSED FACILITY (250-mile window application)
Co-channel study

Figure 2



0 9 18 Kilometers

MINOR CHANGE TO LICENSED FACILITY (250-mile window application)
1st adjacent channel study

Figure 3

Table 1

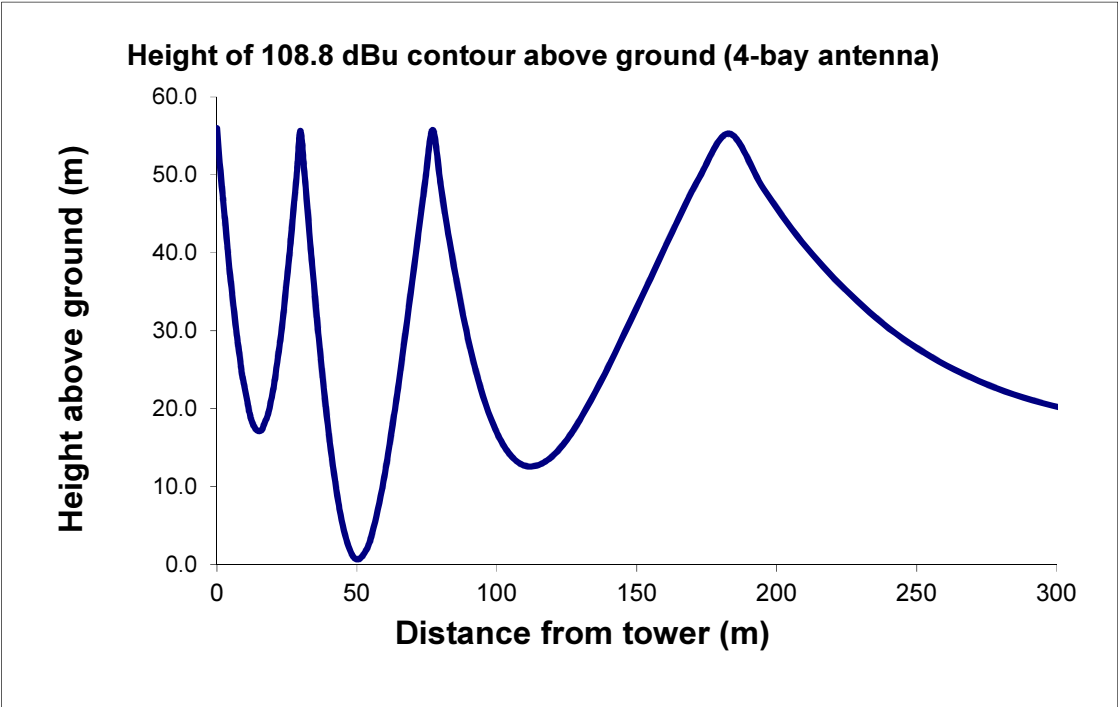
MINOR CHANGE TO LICENSED FACILITY (250-mile window application): Proposed Channel 282

Channel Study

Chan	Class	Call Letters	Type	Status	City	State	Country	Owner	Distance (km)	Bearing TO (deg)	Req. Dist. (km)	Clearance (km)	Field Strength (dBu)
280	D	W280DW	FX	LIC	TAMPA	FL	US	UNIVERSITY OF SOUTH FLORIDA E	31.4	220.6	14.6	16.8	
280	D	W280DK	FX	LIC	SPRING HILL	FL	US	HERNANDO BROADCASTING COM	40.3	314.6	12.6	27.7	
281	L1	WZIG-LP	FL	LIC	PALM HARBOR	FL	US	PALM HARBOR RADIO INC	54.9	249.5	20.0	34.9	
281	C	WTKS-FM	FM	LIC	COCOA BEACH	FL	US	CLEAR CHANNEL BROADCASTING	115.8	73.0	99.7	16.1	
282	C3	WYKE	FM	LIC	INGLIS	FL	US	CITRUS COUNTY ASSOCIATION FC	94.5	330.4	68.2	26.4	
282	C3	WKZM	FM	LIC	SARASOTA	FL	US	THE MOODY BIBLE INSTITUTE OF (114.8	193.6	71.5	43.3	
284	C1	WRBQ-FM	FM	LIC	TAMPA	FL	US	WXTU LICENSE LIMITED PARTNER	43.2	206.0	62.3	-19.1	68.8 (see NOTE)

NOTE:

(No interference CAUSED to WRBQ-FM) 2nd adjacent WRBQ-FM has a field strength of 68.8 dBu F(50,50) at the proposed site. Therefore the proposed translator's interfering contour is the 108.8 dBu F(50,10) contour. At 250 watts ERP, the proposed translator's 108.8 dBu F(50,10) extends 403 meters horizontally from the antenna. However, using a 4-bay SHIVELY 6812B-4 antenna mounted at 56 meters AGL, the antenna's vertical elevation pattern is such that the interfering contour does not reach any lower than 12.8 meters above ground level (42 feet AGL) beyond 115 meters from the tower, and does not reach any occupied structures or population. Therefore this proposal is compliant with the allowance of Rule 74.1204(d). (See Figure 4 below and Figure 5)

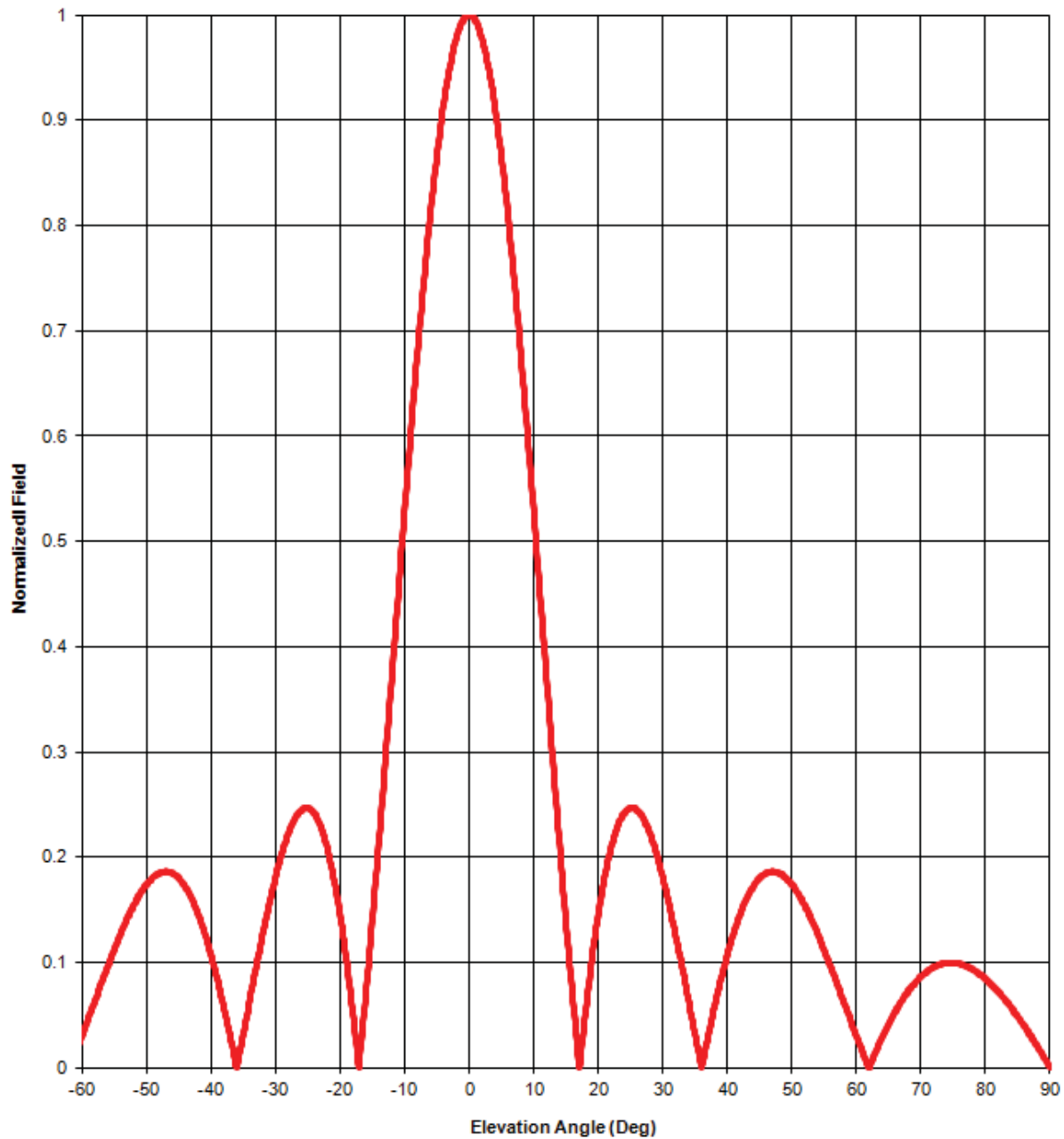




**MINOR CHANGE TO LICENSED FACILITY (250-mile window application)
2nd adjacent channel study with respect to WRBQ-FM**

Figure 5

Elevation pattern



Antenna model: 6812b, 4-bay full-wave-spaced

Test frequency: 98.1 MHz

Gain (maximum):

Power	dB
2.09	3.19 dB

Document No. 6812b 4-bay fw (130701)

A Division of Howell Laboratories, Inc., P. O. Box 389, Bridgton, Maine 04009 USA

(207) 647-3327

1-888-SHIVELY

Fax: (207)647-8273

An Employee-Owned Company

www.shively.com

sales@shively.com

Certified to ISO-9001

Degrees	Rel. Field	Degrees	Rel. Field	Degrees	Rel. Field	Degrees	Rel. Field	Degrees	Rel. Field
1	0.994	19	0.102	37	0.029	55	0.112	73	0.098
2	0.978	20	0.146	38	0.057	56	0.096	74	0.100
3	0.951	21	0.181	39	0.084	57	0.080	75	0.100
4	0.913	22	0.209	40	0.108	58	0.063	76	0.099
5	0.866	23	0.229	41	0.128	59	0.047	77	0.097
6	0.811	24	0.242	42	0.146	60	0.030	78	0.093
7	0.748	25	0.247	43	0.161	61	0.014	79	0.089
8	0.680	26	0.245	44	0.172	62	0.001	80	0.084
9	0.606	27	0.237	45	0.180	63	0.016	81	0.079
10	0.529	28	0.223	46	0.185	64	0.029	82	0.072
11	0.450	29	0.204	47	0.186	65	0.042	83	0.065
12	0.370	30	0.181	48	0.185	66	0.053	84	0.057
13	0.291	31	0.155	49	0.181	67	0.064	85	0.049
14	0.214	32	0.126	50	0.174	68	0.073	86	0.040
15	0.140	33	0.096	51	0.165	69	0.080	87	0.030
16	0.070	34	0.064	52	0.154	70	0.087	88	0.021
17	0.006	35	0.032	53	0.142	71	0.092	89	0.011
18	0.051	36	0.001	54	0.127	72	0.096	90	0.000

Elevation Pattern Tabulation

Antenna model: 6812b, 4-bay full-wave-spaced

Relative Field at 0° Depression = 1.000

Radiofrequency Electromagnetic Exposure Analysis

Source	Height AGL(m)	Antenna type	Bays	Horizontal ERP (kw)	Vertical ERP (kw)	Power Density $\mu\text{W}/\text{cm}^2$ at 2 meters AGL				
						within 10 meters distance	% controlled environment limit (1000 $\mu\text{W}/\text{cm}^2$)	Max. PD	% uncontrolled environment limit (200 $\mu\text{W}/\text{cm}^2$)	Distance to maximum PD (m)
Proposed translator	56	SHIVELY 6812B-4	4	0.250	0.250	0.140	0.0140%	0.42	0.21%	24.4
						0.140	0.0140%	0.42	0.21%	24.4

The proposed facility is excluded from environmental processing under 47. C.F.R. Section 1.1306 (i.e., The facility will not have a significant environmental impact and complies with the maximum permissible radiofrequency electromagnetic exposure limits for controlled and uncontrolled environments).

Calculations made using FCC FMModel