

# **EXHIBIT 13**

## **Waiver Request of Section 74.1204**

K203EU Hutchinson KS 75 Watts ERP

Minor Modification – Channel Change 203

Calvary Chapel of Twin Falls, Inc.

May 2015

The proposed site is contained entirely inside the service contour of second-adjacent Station KJVL Hutchinson, KS and third-adjacent Station KMUW Wichita, KS

### **KJVL**

The proposed site is contained entirely inside the service contour of second-adjacent FM Station KJVL, 201A, .57kW, Hutchinson, KS. The level of least arriving protected F(50,50) signal at the proposed transmitter site is 67.3-dBu. Using the U/D method for calculating, the proposed interference contour is 107.3-dBu (free-space contour method employed). The interfering signal would, in the worst case at the maximum radial, extend 267 meters, or 875 feet from the base of the tower. This tower is located in a sparsely populated area SW of Hutchinson. There are equipment enclosures around the tower. The larger structure at this site is an old shipping container being used to house equipment. Attached is a portion of the USGS Yaggy(KS) Quadrangle with a slightly larger interference contour marked in yellow. Also attached is an aerial view from Google Earth of the tower location, showing the nearest resident located at approximately 1604 Feet from the base of the tower. There are no other residences, businesses or major roadways located within the interference contour, therefore Calvary Chapel of Twin Falls, Inc. respectfully requests a waiver of the FM translator contour overlap regulations with respect to second -adjacent FM Station KJVL Hutchinson, KS.

### **KMUW**

The proposed site is contained entirely inside the service contour of third-adjacent FM Station KMUW, 206C1, 100kW, Wichita, KS. The level of least arriving protected F(50,50) signal at the proposed transmitter site is 65.6-dBu. Using the U/D method for calculating proposed interference, the interfering contour is 105.6-dBu (free-space contour method employed). The interfering signal would, in the worst case at the maximum radial, extend 325 meters, or 1064 feet from the base of the tower. This tower is located in a sparsely populated area SW of Hutchinson. There are equipment enclosures around the tower. The larger structure at this site is an old shipping container being used to house equipment. Attached is a portion of the USGS Yaggy(KS) Quadrangle with a slightly larger interference contour marked in yellow. Also attached is an aerial view from Google Earth of the tower location, showing the nearest resident located at approximately 1604 Feet from the base of the tower. There are no other residences, businesses or major roadways located within the interference contour, therefore Calvary Chapel of Twin Falls, Inc. respectfully requests a waiver of the FM translator contour overlap regulations with respect to third-adjacent FM Station KMUW Wichita, KS.

Calvary Chapel of Twin Falls, Inc.

Hutchinson KS K203EU Minor Mod of CP

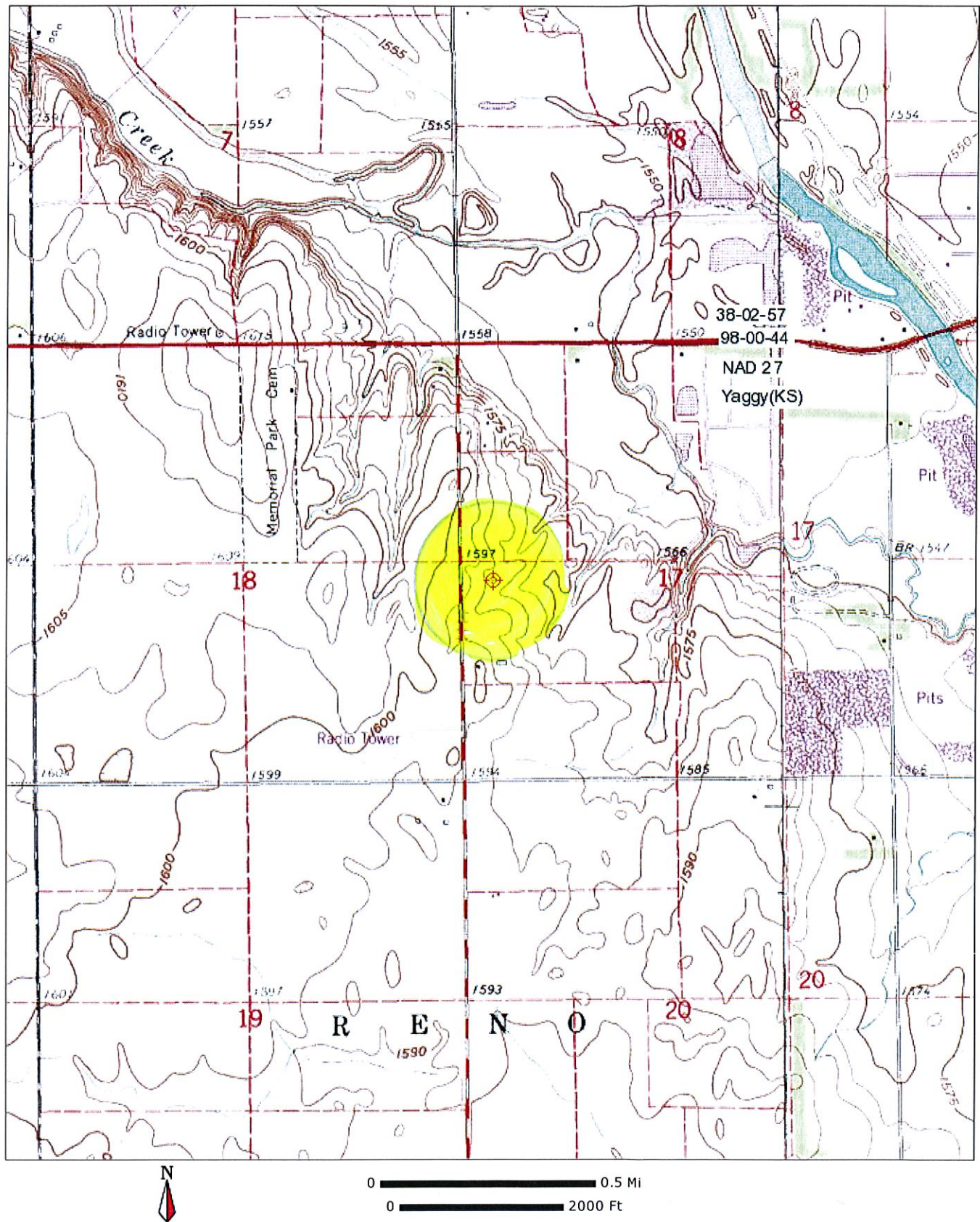
Calvary Chapel Of Twin Falls, Inc.

REFERENCE 38 02 57.0 N. 98 00 44.0 W. CH# 203D - 88.5 MHz, Pwr= 0.075 kW DA, HAAT= 108.1 M, COR= 588 M DISPLAY DATES DATA 04-23-15 SEARCH 05-12-15

Average Protected F(50-50)= 9.98 km Standard Directional

CH CITY	CALL	TYPE STATE	ANT STATE	AZI <--	DIST FILE #	LAT LNG	PWR(kW) HAAT(M)	INT(km) COR(M)	PRO(km) LICENSEE	*IN* (Overlap in km)	*OUT* (in km)
06Z2 Hutchinson	616942	AP	_HN KS	242.9 62.7	29.38 BPRM20011009AEG	37 55 43.0 98 18 36.0	0.000	166.0 0	0.0 Sierra Grande Broadcasting	166.0R	-136.6M
203C2 Salina	KAKA	LIC	DCN KS	6.9 187.0	114.15 BLED19980619KA	39 04 12.0 97 51 14.0	46.000 120	131.6 531	47.1 American Family Associati o	-26.3*	37.6
203D Hutchinson	<del>K203EU</del>	LIC	_V_ KS	44.5 224.6	16.52 BLFT20110922ACU	38 09 18.0 97 52 47.0	0.013 144	24.2 615	7.2 Calvary Chapel Of Twin Fal	-17.4*	-23.6*
206C1 Wichita	KMUW	LIC	DCX KS	124.9 305.2	53.38 BMLED20100907AAZ	37 46 26.0 97 30 51.8	100.000 278	8.6 699	65.7 Wichita State University	34.3	-12.9*
201A Hutchinson	KJVL	LIC	_CX KS	85.3 265.3	7.19 BLED20111025AIG	38 03 16.0 97 55 50.0	0.570 57	1.6 527	11.1 Great Plains Christian Rad	-4.9*	-4.5*
204D Hutchinson	<del>K203EU</del>	CP	DV_ KS	44.5 224.6	16.52 BPFT20130423AAG	38 09 18.0 97 52 47.0	0.013 144	10.2 615	7.2 Calvary Chapel Of Twin Fal	-3.4	-4.4
204D Mcpherson	K204CR	LIC	_CN KS	39.5 219.7	46.50 BLFT19980311TG	38 22 17.0 97 40 22.0	0.250 46	12.8 505	9.2 Bible Broadcasting Network	24.0	23.8
202C3 Wichita	KYFW	LIC	_CX KS	125.0 305.4	72.73 BMLED20090403ABO	37 40 22.0 97 20 08.0	17.000 43	35.5 446	22.9 Bible Broadcasting Network	26.8	35.1
205C1 Hays	KPRD	LIC	_CN KS	322.0 141.5	102.18 BLED19940902KF	38 46 16.0 98 44 17.0	83.000 194	7.3 744	59.7 The Praise Network, Inc.	87.3	42.1
201A North Newton	KBCU	LIC	_CN KS	87.1 267.5	58.79 BMLED19990310KC	38 04 26.0 97 20 35.0	0.150 17	0.9 463	6.2 Bethel College	47.5	51.9
204D Wichita	K204DQ	LIC	_C_ KS	124.1 304.5	71.54 BMLFT20130109AER	37 41 13.0 97 20 23.0	0.065 68	10.5 472	7.3 Calvary Chapel Of Twin Fal	50.5	49.4
201A Great Bend	KRTT	LIC	_VX KS	298.2 117.7	74.47 BLED20110124ADK	38 21 46.0 98 45 50.0	0.900 39	1.6 609	12.3 Divine Mercy Radio, Inc.	65.9	61.9
06 2C Ensign	KBSD-DT	LI	_HN KS	258.2 76.8	210.19 BLCDT20090717AAS	37 38 28.0 100 20 39.0	31.000 217	0.5 1046	70.7 Sunflower Broadcasting, In	142.5R	67.7M
06 2 Hayes Center	KWNB-DR	APR	_HN NE	318.8 136.9	386.61 BPRM20080801BDB	40 37 32.0 101 01 45.0	3.000 221	0.5 1160	70.7 Pappas Telecasting Of Cent	142.5R	244.1M
06 2C Hayes Center	KWNB-TV	AP	_HN NE	318.8 136.9	386.61 BDSTA20110930BHG	40 37 32.0 101 01 45.0	6.300 221	166.0 1160	0.0 Pappas Telecasting Of Cent	142.5R	244.1M
06 2C Hayes Center	KWNB-TV	AP	_HN NE	318.8 136.9	386.61 BDSTA20121024ABA	40 37 32.0 101 01 45.0	6.300 221	166.0 1160	0.0 Pappas Telecasting Of Cent	142.5R	244.1M
06 2C Hayes Center	KWNB-TV	LI	_HN NE	318.8 136.9	386.61 BLCDT20090604ABL	40 37 32.0 101 01 45.0	11.900 221	166.0 1160	0.0 Pappas Telecasting Of Cent	142.5R	244.1M

Terrain database is USGS 03 SEC , R= 73.215 qualifying spacings or FCC minimum Spacings in KM, M= Margin in KM  
 Contour distances are on direct line to and from reference station. Reference zone= , Co to 3rd adjacent.  
 All separation margins (if shown) include rounding. Call signs with strikeout need not be protected.  
 Ant Column: (D= DA Standard, Z= DA 73.215, N= Not DA 73.215, \_= Omni), Polarization (C,H,V,E), Beamtilt(Y,N,X)  
 "\*\*\*affixed to 'IN' or 'OUT' values = site inside restricted contour.



1600 Feet - House



Shipping Container used for Equipment



Base of Tower



Communications Tower



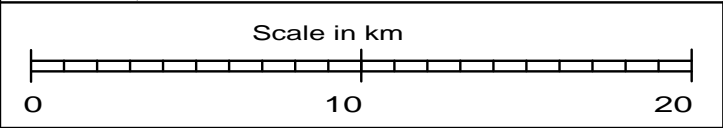
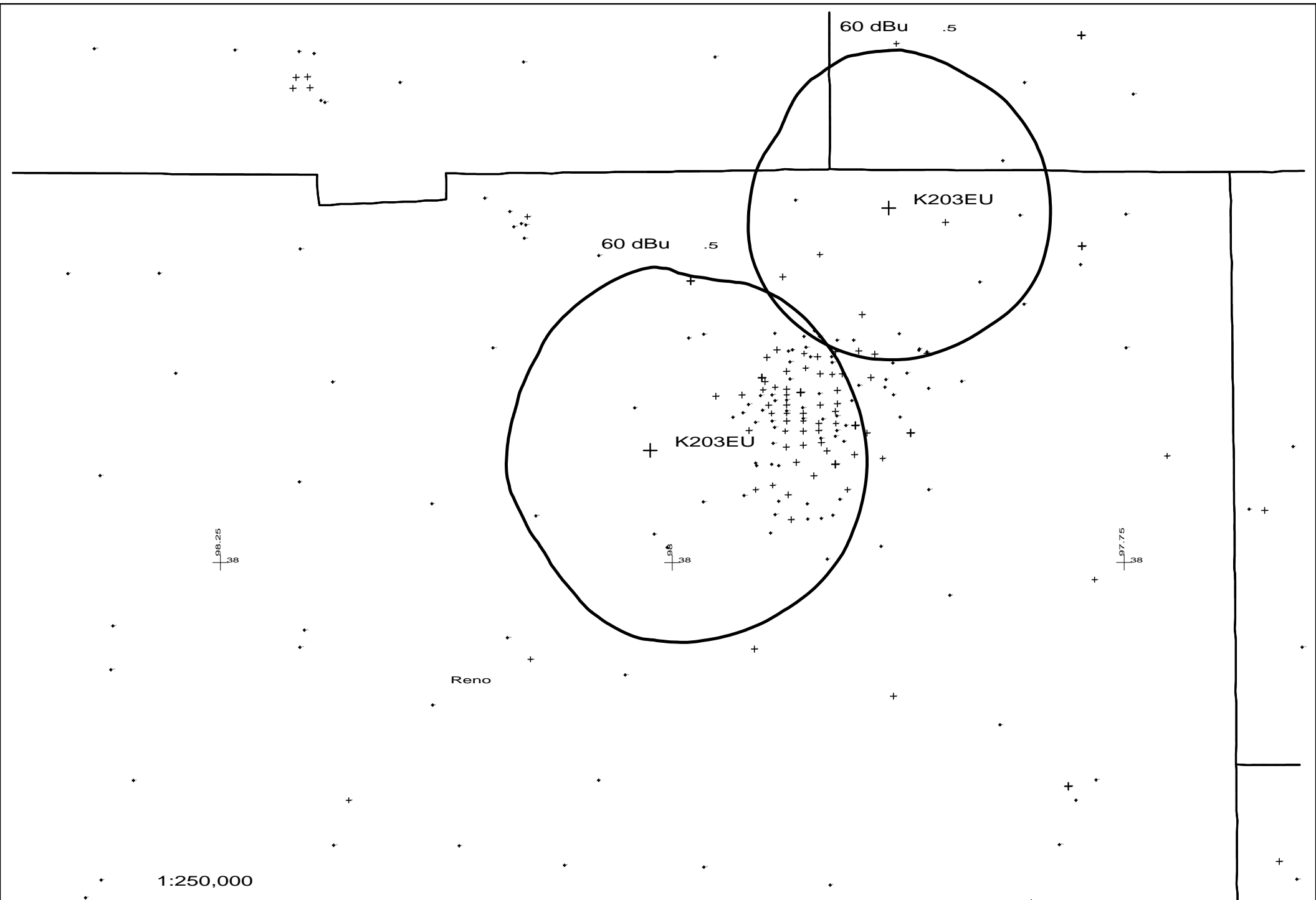
Google earth



Equipment Encloser



1000 ft



K203EU 203D .075kW 588M AMSL  
N. Lat. 38 02 57 W. Lng. 98 00 44

K203EU 60 Contours  
Calvary Chapel of