

COMPREHENSIVE EXHIBIT

***Pro Forma* Applications for the Restructuring
of the
Broadcast Licensee Subsidiaries of
Tribune Company, Debtor-in-Possession**

Table of Contents

| | |
|--|---|
| I. Introduction and Overview | 2 |
| II. Relationship of the Restructuring Applications to the Exit Applications..... | 3 |
| III. Basis for <i>Pro Forma</i> Treatment..... | 3 |
| IV. Description of Restructuring Transactions | 4 |
| V. Permit-but-Disclose Status..... | 5 |
| VI. Agreements for the Proposed Restructuring Transactions..... | 5 |
| VII. Specific Changes in Tribune Licensee Subsidiaries | 6 |

ATTACHMENT A: Broadcast Licenses Held by Tribune Subsidiaries, with a Description of the Consents Transfers and Assignments Being Sought in Separate Applications to Implement the Restructuring

ATTACHMENT B: Non-Broadcast Licenses Held by Tribune Subsidiaries, with a Description of the Consents Transfers and Assignments Being Sought in Separate Applications to Implement the Restructuring

ATTACHMENT C: Fourth Amended Plan of Reorganization for Tribune Company prepared by certain of Tribune's debtors, creditors and lenders, as amended (the "DCL Plan").

ATTACHMENT D: Chart Depicting Ownership of Tribune after Consummation of the Restructuring Transactions

Attachment C is being filed with the Restructuring Application for WGN Continental Broadcasting Company, Debtor-in- Possession, licensee of WGN(AM) and WGN-TV, Chicago, Illinois, and is incorporated by reference in the other broadcast, satellite, wireless and CARS Restructuring Applications being filed concurrently with the WGN application.

COMPREHENSIVE EXHIBIT

Pro Forma Applications for the Restructuring of the Broadcast Licensee Subsidiaries of Tribune Company, Debtor-in-Possession

I. Introduction and Overview

FCC Form 314 applications currently are pending before the Commission seeking Commission consent for Tribune Company, Debtor-in-Possession (“Tribune”) and the other Tribune Debtors to emerge from bankruptcy (the “Exit Applications”).¹

This application and other concurrently filed FCC Form 316 applications, together with additional non-broadcast applications (collectively, the “Restructuring Applications”), seek the Commission’s consent to implement, prior to the Tribune Debtor’s emergence from bankruptcy, an internal restructuring of the subsidiaries of Tribune.² The Restructuring Applications include both the broadcast applications identified in Attachment A of this Exhibit and concurrently filed applications for assignment or transfer of non-broadcast licenses, as described in Attachment B to this Exhibit. These transactions are contemplated by the Plan of Reorganization for Tribune Company prepared by certain of Tribune’s debtors, creditors and lenders, as amended (the “DCL Plan”), by which Tribune and certain of its direct and indirect subsidiaries (collectively, the “Tribune Debtors”) will emerge from bankruptcy as reorganized entities

¹ On December 8, 2008, Tribune and certain of its subsidiaries submitted voluntary petitions for relief under chapter 11 of title 11 of the United States Code to the United States Bankruptcy Court, District of Delaware (the “Bankruptcy Court”), to reorganize under Chapter 11 of the Bankruptcy Code. *See In re Tribune Company et al.*, Case No. 08-13141 (Chapter 11) (Bankr. D. Del.) (jointly administered). Tribune subsequently filed, and the Commission granted, a series of FCC Form 316 involuntary *pro forma* applications to assign the broadcast licenses held by certain Tribune subsidiaries to those same subsidiaries operating as debtors-in-possession and to reflect control of those subsidiaries by Tribune as a debtor-in-possession. *See* WPIX, Inc.: WPIX(TV), New York, NY, BALCT-20081217ACB, *et al.* On April 28, 2010, Tribune filed applications on FCC Form 314 for consent to assign out of bankruptcy the licenses of its broadcast subsidiaries, and those applications remain pending before the Commission. *See* WPIX, Inc.: WPIX(TV), New York, NY, BALCDT-20100428ADP, *et al.*

² As Tribune noted in the Exit Applications as initially submitted,

The Plan of Reorganization authorizes Tribune to enter into transactions to change the organizational structure of its current subsidiaries. If Tribune determines to enter into such transactions with respect to Tribune licensee subsidiaries while the Exit Applications are pending, the applicants, as appropriate, will amend the Exit Applications and/or file separate applications for *pro forma* transfer or assignment to obtain any necessary authority for any changes affecting the Tribune licensee subsidiaries.

(the reorganized Tribune Company is hereinafter referred to as “Reorganized Tribune”). These transactions for internal reorganization of Tribune’s broadcast and non-broadcast licensee subsidiaries as described in this Exhibit are referred to hereafter as the “Restructuring Transactions.”

II. Relationship of the Restructuring Applications to the Exit Applications

As part of the implementation of the DCL Plan, Tribune proposes to consummate the Restructuring Transactions (1) following the Commission’s issuance of consent for Tribune to emerge from bankruptcy pursuant to the Exit Applications and (2) prior to the consummation of the transactions described in the Exit Applications and Tribune’s emergence from bankruptcy.³ Tribune’s consummation of the Restructuring Transactions while in bankruptcy will result in changes in the identity of Tribune subsidiaries proposed to be the assignees under the Exit Applications. In each case in which the assignee is a new entity, the change will be a minor change from one wholly owned indirect subsidiary of Tribune to another wholly owned direct or indirect subsidiary of Tribune. Accordingly, Tribune, in connection with the filing of this and the other Restructuring Applications, also is amending the Exit Applications so that a Commission grant of the Exit Applications will reflect the changes in the identity of the Tribune licensee subsidiaries that will be effectuated through the pre-emergence consummation of the Restructuring Transactions.

III. Basis for *Pro Forma* Treatment

The Restructuring Applications propose changes only in the structure of Tribune’s subsidiaries and do not otherwise propose to make any changes or introduce any new parties into Tribune itself, other than newly created wholly owned subsidiaries of Tribune. The Commission’s rules specifically recognize that an applicant may use *pro forma* procedures for

Assignment or transfer from a corporation to a wholly owned subsidiary thereof or vice versa, or where there is an assignment from a corporation to a corporation owned or controlled by the assignor stockholders without substantial change in their interests.

See 47 C.F.R. §73.3540(f)(6). Each of the assignments and transfers proposed in the Restructuring Applications involves either the assignment of Tribune licenses from one indirect, wholly-owned subsidiary of Tribune to another or the transfer of a Tribune licensee from control by one indirect, wholly owned subsidiary of Tribune to control by another indirect, wholly owned subsidiary of Tribune.

³ Pursuant to Wireless Bureau authorization, Tribune plans to consummate prior to the approval of the Exit Applications a limited number of Restructuring Transactions that involve only non-broadcast authorizations.

IV. Description of Restructuring Transactions

At present, Tribune indirectly holds its broadcast licenses through its direct wholly owned subsidiary Tribune Broadcasting Holdco, LLC, which, in turn, holds all of the issued and outstanding stock of Tribune Broadcasting Company. Each of Tribune's current broadcasting licensee subsidiaries is a direct or indirect wholly owned subsidiary of Tribune Broadcasting Company.

Concurrently with the consummation of the *pro forma* license assignments and *pro forma* transfer,⁴ and as a part of the Restructuring Transactions, Tribune Broadcasting Holdco, LLC will merge into Tribune Broadcasting Company. Tribune Broadcasting Company will then convert to a limited liability company, Tribune Broadcasting Company, LLC. In addition, the Restructuring Applications contemplate that each of the Tribune broadcast licenses — except for the licenses for KPLR-TV, St. Louis, Missouri, held by KPLR, Inc., and those for WGNO(TV) and WNOL-TV, held by Tribune Broadcasting New Orleans, Inc. — will be assigned to a Delaware limited liability company following the Restructuring Transactions as a result of:

- a direct assignment of the licenses of an existing subsidiary to one or more newly formed Delaware limited liability company licensee subsidiaries;
- a merger of the present licensee subsidiary into the corresponding newly formed Delaware limited liability company licensee subsidiary, with such newly formed Delaware limited liability company subsidiary as the surviving entity in the merger; or
- a conversion of the present licensee subsidiary from a corporation to a limited liability corporation under applicable provisions of state law, which would result in a new business form (limited liability company) and a new name.

KPLR, Inc. will remain the licensee of KPLR-TV, St. Louis, Missouri, and Tribune Television New Orleans, Inc. will remain the licensee of WGNO(TV) and WNOL-TV, New Orleans, Louisiana, as the Restructuring Transactions do not contemplate any merger, conversion or similar transaction involving KPLR, Inc. or Tribune Television New Orleans, Inc. Each of KPLR, Inc. and Tribune Television New Orleans, Inc. will become a direct wholly-owned subsidiary of Tribune Broadcasting Company, LLC following the merger of Tribune Broadcast Holdco, LLC into Tribune Broadcasting Company and the conversion of Tribune Broadcasting Company into a limited liability company, as described above. Thus, KPLR, Inc. and Tribune Television

⁴ Most of the Restructuring Applications for broadcast licensees propose a *pro forma* assignment of license to a new entity. The Restructuring Applications for KPLR, Inc., and for Tribune Television New Orleans, Inc., however, seek consent to a *pro forma* transfer of control.

New Orleans, Inc. will continue in existence as corporations, but will undergo a *pro forma* transfer of control.

As a result of the Restructuring Transactions described above, Tribune Broadcasting Company, LLC will become the direct or indirect parent company of each of Tribune's broadcast licensee subsidiaries, which are the assignees (or licensees undergoing a transfer of control) pursuant to the *pro forma* assignment (or transfer) applications described in Section VII.

V. Permit-but-Disclose Status

The Commission already has granted "permit-but-disclose" status under the Commission's *ex parte* rules for Tribune's Exit Applications. See Public Notice, "Media Bureau Announces Filing of Applications for Consent to Assignment of Broadcast Station Licenses by Tribune and Its Subsidiary Companies and Permit-but-Disclose Ex Parte Status for the Proceeding," MM Docket No. 10-104, FCC No. DA 10-840, released May 13, 2010; see also 47 C.F.R. § 1.1200 *et seq.* The Restructuring Applications also request Commission consent to implement the Plan of Reorganization. Accordingly, Tribune understands that the permit-but-disclose *ex parte* procedures applicable to non-restricted proceedings also will govern the Commission's consideration of the Restructuring Applications. See 47 C.F.R. § 1.1206.

VI. Agreements for the Proposed Restructuring Transactions

The principal document governing the Restructuring Transactions is the DCL Plan. A copy of the DCL Plan is being filed with the Restructuring Application for WGN Continental Broadcasting Company, licensee of WGN(AM) and WGN-TV, Chicago, Illinois, and incorporated by reference in the other broadcast Restructuring Applications. Because the Restructuring Applications are wholly internal to Tribune, other anticipated transaction documents will consist of those associated with the notices, assignments, merger, conversion, and related filings under state law that will be prepared to reflect the changes in Tribune subsidiaries detailed in Section VII, and Attachments A and B, below, and in the chart included in Attachment D. The documents will be voluminous and will contain information that is not germane to the FCC's consideration of the Restructuring Applications. Documents relating to the bankruptcy proceeding generally will be available to the public through the Bankruptcy Court.⁵

⁵ See *LUJ, Inc. and Long Nine, Inc.*, 17 FCC Rcd 16980 (2002). Epiq Bankruptcy Solutions, LLC offers a list on its website of the publicly available filings in the Tribune bankruptcy docket as a service to the public. The list is available at <http://chapter11.epiqsystems.com/tribune> (last visited June 8, 2012). The website is not the website of the United States Bankruptcy Court and does not purport to contain the complete, official record of the Bankruptcy Court. All documents filed with the Bankruptcy Court are available for inspection at the office of the Clerk of the Bankruptcy Court during its normal business hours or may be accessed online for a fee via PACER at: <http://www.deb.uscourts.gov>.

VII. Specific Changes in Tribune Licensee Subsidiaries

The following chart (the “Restructuring Transactions Chart”) describes the changes in Tribune licensee subsidiaries that will result from the consummation of each of the Restructuring Transactions. As indicated on the Restructuring Transactions Chart, the Restructuring Transactions involve only transfers and assignments among wholly owned direct or indirect subsidiaries of Tribune. Tribune’s broadcast licenses will be held by subsidiaries of Tribune Broadcasting Company, LLC, a wholly-owned subsidiary of Tribune Company. Attachment D hereto includes a diagram of the ownership structure of Tribune’s broadcast licensee subsidiaries following the consummation of the Restructuring Transactions. Each assignee and transferee is a debtor-in-possession; the phrase “debtor-in-possession” is omitted in the description column.

ATTACHMENT A: BROADCAST LICENSES HELD BY TRIBUNE SUBSIDIARIES

| Assignor or Transferor | Assignee/ Transferee | Call Sign and FCC ID | Community of License | Description |
|--|---|---|-----------------------------|---|
| Tribune Television Northwest, Inc., Debtor-in-Possession (<i>Assignor</i>) | Tribune Broadcasting Seattle, LLC, Debtor-in-Possession (<i>Assignee</i>) | KCPQ(TV) (33894) | Tacoma, WA | Assignor will convert into Tribune Broadcasting Seattle, LLC, a wholly owned subsidiary of Tribune Broadcasting Company, LLC. |
| | | K25CG-D ¹ (33898) | Aberdeen, WA | |
| | | K42CM-D ² (33895) | Centralia/ Chehalis, WA | |
| | | K07ZC-D ³ [formerly K54DX] (33896) | Ellensburg-Kittitas, WA | |
| | | K28KJ-D ⁴ [formerly K64ES] (33899) | Chelan, WA | |
| Channel 40, Inc., Debtor-in-Possession (<i>Assignor</i>) | KXTL, LLC, Debtor-in-Possession (<i>Assignee</i>) | KTXL(TV) (10205) | Sacramento, CA | Assignor will merge with and into KTXL, LLC, a wholly owned subsidiary of Tribune Broadcasting Company, LLC. |
| KIAH Inc., Debtor-in-Possession (<i>Assignor</i>) | KIAH, LLC, Debtor-in-Possession (<i>Assignee</i>) | KIAH(TV) (23394) | Houston, TX | Assignor will convert into KIAH, LLC, a wholly owned subsidiary of Tribune Broadcasting Company, LLC. |
| KSWB Inc., Debtor-in-Possession (<i>Assignor</i>) | KSWB, LLC, Debtor-in-Possession (<i>Assignee</i>) | KSWB-TV (58827) | San Diego, CA | Assignor will merge with and into KSWB, LLC, a wholly owned subsidiary of Tribune Broadcasting Company, LLC. |
| KTLA Inc., Debtor-in-Possession (<i>Assignor</i>) | KTLA, LLC, Debtor-in-Possession (<i>Assignee</i>) | KTLA(TV) (35670) | Los Angeles, CA | Assignor will merge with and into KTLA, LLC, a wholly owned subsidiary of Tribune Broadcasting Company, LLC. |

¹ Call sign change reflecting digital conversion.² Call sign change reflecting digital conversion.³ Call sign change reflecting digital conversion.⁴ Call sign change reflecting digital conversion.

| Assignor or Transferor | Assignee/ Transferee | Call Sign and FCC ID | Community of License | Description |
|---|--|---|-----------------------------|--|
| Tribune Television Holdings, Inc., Debtor-in-Possession (<i>Assignor</i>) | Tribune Broadcasting Seattle, LLC, Debtor-in-Possession (<i>Assignee</i>) | KZJO(TV) (formerly KMYQ(TV)) (69571) | Seattle, WA | The licenses for KZJO(TV) will be assigned to Tribune Broadcasting Seattle, LLC, a wholly owned subsidiary of Tribune Broadcasting Company, LLC. |
| | | K25CH-D ⁵ (69575) | North Bend, WA | |
| | | K29ED-D ⁶ (69574) | Everett, WA | |
| Tribune Television Holdings, Inc., Debtor-in-Possession (<i>Assignor</i>) | WXMI, LLC, Debtor-in-Possession (<i>Assignee</i>) | WXMI(TV) (68433) | Grand Rapids, MI | The licenses for WXMI(TV) will be assigned to WXMI, LLC, a wholly owned subsidiary of Tribune Broadcasting Company, LLC. |
| | | W42CB-D ⁷ (64440) | Hesperia, MI | |
| | | W17DF-D ⁸ (formerly W52DB) (64442) | Muskegon, MI | |
| Tribune Television Company, Debtor-in-Possession (<i>Assignor</i>) | KDAF, LLC, Debtor-in-Possession (<i>Assignee</i>) | KDAF(TV) (22201) | Dallas, TX | The licenses for KDAF(TV) will be assigned to KDAF, LLC, a wholly owned subsidiary of Tribune Broadcasting Company, LLC. |
| Tribune Television Company, Debtor-in-Possession (<i>Assignor</i>) | Tribune Broadcasting Hartford, LLC, Debtor-in-Possession (<i>Assignee</i>) | WTIC-TV (147) | Hartford, CT | The licenses for WTIC-TV will be assigned to Tribune Broadcasting Hartford, LLC, a wholly owned subsidiary of Tribune Broadcasting Company, LLC. |
| Tribune Television Company, Debtor-in-Possession (<i>Assignor</i>) | WPMT, LLC, Debtor-in-Possession (<i>Assignee</i>) | WPMT(TV) (10213) | York, PA | The licenses for WPMT(TV) will be assigned to WPMT, LLC, a wholly owned subsidiary of Tribune Broadcasting Company, LLC. |

⁵ Call sign change reflecting digital conversion.

⁶ Call sign change reflecting digital conversion.

⁷ Call sign change reflecting digital conversion.

⁸ Call sign change reflecting digital conversion.

| Assignor or Transferor | Assignee/ Transferee | Call Sign and FCC ID | Community of License | Description |
|--|---|--------------------------------|----------------------|--|
| Tribune Television Company, Debtor-in-Possession (<i>Assignor</i>) | WPHL, LLC, Debtor-in-Possession (<i>Assignee</i>) | WPHL-TV (73879) | Philadelphia, PA | The licenses for WPHL-TV will be assigned to WPHL, LLC, a wholly owned subsidiary of Tribune Broadcasting Company, LLC. |
| Tribune Television Company, Debtor-in-Possession (<i>Assignor</i>) | Tribune Broadcasting Indianapolis, LLC, Debtor-in-Possession (<i>Assignee</i>) | WXIN(TV) (146) | Indianapolis, IN | The licenses for WXIN(TV) will be assigned to Tribune Broadcasting Indianapolis, LLC, a wholly owned subsidiary of Tribune Broadcasting Company, LLC. |
| Tribune Broadcast Holdings, Inc., Debtor-in-Possession (<i>Assignor</i>) | KRCW, LLC, Debtor-in-Possession (<i>Assignee</i>) | KRCW-TV (10192) | Salem, OR | The licenses for KRCW-TV will be assigned to KRCW, LLC, a wholly owned subsidiary of Tribune Broadcasting Company, LLC. |
| | | [K13ZE] ⁹ (129666)] | Prineville, OR | |
| | | K20ES (12671) | Pendleton, etc., OR | |
| | | K24DX (12678) | Pendleton, etc., OR | |
| | | KRCW-LP (35151) | Portland, OR | |
| Tribune Broadcast Holdings, Inc., Debtor-in-Possession (<i>Assignor</i>) | Tribune Broadcasting Indianapolis, LLC, Debtor-in-Possession (<i>Assignee</i>) | WTTV(TV) (56523) | Bloomington, IN | The licenses for WTTV(TV) and WTTK(TV) will be assigned to Tribune Broadcasting Indianapolis, LLC, a wholly owned subsidiary of Tribune Broadcasting Company, LLC. |
| | | WTTK(TV) ¹⁰ (56526) | Kokomo, IN | |
| WGN Continental Broadcasting Company, Debtor-in-Possession (<i>Assignor</i>) | WGN Continental Broadcasting Company, LLC, Debtor-in-Possession (<i>Assignee</i>) | WGN(AM) (72114) | Chicago, IL | Assignor will convert into WGN Continental Broadcasting Company, LLC, a wholly owned subsidiary of Tribune Broadcasting Company, LLC. |
| | | WGN-TV (72115) | Chicago, IL | |

⁹ Construction permit surrendered for cancellation on August 8, 2011.

¹⁰ Tribune Broadcast Holdings, Inc. operates WTTK(TV), Kokomo, Indiana, as a satellite of WTTV(TV), Bloomington, Indiana. *See Shareholders of Tribune Co.*, 22 FCC Rcd at 21284-21286.

| Assignor or Transferor | Assignee/ Transferee | Call Sign and FCC ID | Community of License | Description |
|--|---|------------------------------------|----------------------|---|
| Channel 39, Inc., Debtor-in-Possession (<i>Assignor</i>) | WSFL, LLC, Debtor-in-Possession (<i>Assignee</i>) | WSFL-TV (10203) | Miami, FL | Assignor will convert into WSFL, LLC, a wholly owned subsidiary of Tribune Broadcasting Company, LLC. |
| KWGN Inc., Debtor-in-Possession (<i>Assignor</i>) | KWGN, LLC, Debtor-in-Possession (<i>Assignee</i>) | KWGN-TV (35883) | Denver, CO | Assignor will convert into KWGN, LLC, a wholly owned subsidiary of Tribune Broadcasting Company, LLC. |
| Tribune Television New Orleans, Inc., Debtor-in-Possession (<i>Licensee</i>), a subsidiary of Tribune Broadcasting Company (<i>Transferor</i>) | Tribune Broadcasting Company, LLC, Debtor-in-Possession (<i>Transferee</i>) | WGNO(TV) (72119) | New Orleans, LA | Control of Tribune Television New Orleans, Inc., licensee of WGNO(TV) and WNOL-TV, will be transferred to Tribune Broadcasting Company, LLC, and Tribune Television New Orleans, Inc. will become a wholly owned subsidiary of Tribune Broadcasting Company, LLC. |
| | | WNOL-TV (54280) | New Orleans, LA | |
| WPIX, Inc., Debtor-in-Possession (<i>Assignor</i>) | WPIX, LLC, Debtor-in-Possession (<i>Assignee</i>) | WPIX(TV) (73881) | New York, NY | Assignor will convert into WPIX, LLC, a wholly owned subsidiary of Tribune Broadcasting Company, LLC. |
| WDCW Broadcasting, Inc., Debtor-in-Possession (<i>Assignor</i>) | WDCW, LLC, Debtor-in-Possession (<i>Assignee</i>) | WDCW(TV) (30576) | Washington, DC | Assignor will convert into WDCW, LLC, a wholly owned subsidiary of Tribune Broadcasting Company, LLC. |
| | | [W51CY (64680)] ¹¹ | Chambersburg, PA | |
| WCCT, Inc., Debtor-in-Possession (formerly named WTXX Inc.) (<i>Assignor</i>) | Tribune Broadcasting Hartford, LLC, Debtor-in-Possession (<i>Assignee</i>) | WCCT-TV (formerly WTXX(TV) (14050) | Waterbury, CT | Assignor will convert into Tribune Broadcasting Hartford, LLC, a wholly owned subsidiary of Tribune Broadcasting Company, LLC. |

¹¹ Authorization surrendered for cancellation on August 12, 2011.

| Assignor or Transferor | Assignee/ Transferee | Call Sign and FCC ID | Community of License | Description |
|--|---|-----------------------------|-----------------------------|---|
| KPLR, Inc., Debtor-in-Possession <i>(Licensee), a subsidiary of</i> Tribune Broadcasting Company <i>(Transferor)</i> | Tribune Broadcasting Company, LLC, Debtor-in-Possession, <i>(Transferee)</i> | KPLR-TV (35417) | St. Louis, MO | Tribune Broadcasting Company, which owns all of the issued and outstanding stock of KPLR, Inc., will be converted into a Delaware limited liability company, Tribune Broadcasting Company, LLC, which will be a wholly owned subsidiary of Tribune Company. |

**ATTACHMENT B: NON-BROADCAST LICENSES HELD BY TRIBUNE
SUBSIDIARIES**

| Assignor or Transferor | Assignee or Transferee | Call Sign | Description |
|---|--|-------------------------|---|
| Channel 39, Inc., Debtor-in-Possession (Assignor) | WSFL, LLC, Debtor-in-Possession (Assignee) | [E090016] ¹² | Assignor will convert into WSFL, LLC, a wholly owned subsidiary of Tribune Broadcasting Company, LLC, a wholly owned subsidiary of Tribune Company. |
| | | E5159 | |
| Channel 40, Inc., Debtor-in-Possession (Assignor) | KXTL, LLC, Debtor-in-Possession (Assignee) | WNEU600 | Assignor will merge with and into KTXL, LLC, a wholly owned subsidiary of Tribune Broadcasting Company, LLC, a wholly owned subsidiary of Tribune Company. |
| | | WNEU601 | |
| | | E070263 | |
| | | KG62 | |
| Chicago Tribune Company, Debtor-in-Possession (Assignor) | Chicago Tribune Company, LLC, Debtor-in-Possession (Assignee) | WQP427 | Assignor will merge with and into Chicago Tribune Company, LLC, a wholly owned subsidiary of Tribune Publishing Company, LLC, a wholly owned subsidiary of Tribune Company. |
| Chicagoland Microwave Licensee, Inc., Debtor-in-Possession (Assignor) | Chicagoland Television News, LLC, Debtor-in-Possession. (Assignee) | WNTQ776 | Assignor will merge with and into Chicagoland Television News, Inc., which will then convert into Chicagoland Television News, LLC, a wholly owned subsidiary of Tribune Broadcasting Company, LLC, a wholly owned subsidiary of Tribune Company. |
| | | WOF49 | |
| | | E040146 | |
| | | KB60125 | |
| | | [WLY387] ¹³ | |
| | | [WLY388] ¹⁴ | |

¹² License assigned to and now held by WGN Continental Broadcasting Company, Debtor-in-Possession.

¹³ Surrendered for cancellation on August 12, 2011.

¹⁴ Surrendered for cancellation on August 12, 2011.

| Assignor or Transferor | Assignee or Transferee | Call Sign | Description |
|--|--|------------------|---|
| The Hartford Courant Company, Debtor-in-Possession (<i>Assignor</i>) | The Hartford Courant Company, LLC, Debtor-in-Possession (<i>Assignee</i>) | WQDX448 | Assignor will merge with and into The Hartford Courant Company, LLC, a wholly owned subsidiary of Tribune Publishing Company, LLC, a wholly owned subsidiary of Tribune Company. |
| KIAH Inc., Debtor-in-Possession (<i>Assignor</i>) | KIAH, LLC, Debtor-in-Possession (<i>Assignee</i>) | WNSZ973 | Assignor will convert into KIAH, LLC, a wholly owned subsidiary of Tribune Broadcasting Company, a wholly owned subsidiary of Tribune Company. |
| | | E000330 | |
| <i>Licensee:</i> KPLR, Inc., Debtor-in-Possession <i>Transferor:</i> Tribune Broadcasting Company | <i>Transferee:</i> Tribune Broadcasting Company, LLC, Debtor-in-Possession. <i>Licensee remains:</i> KPLR, Inc., Debtor-in-Possession | WPWC614 | Tribune Broadcasting Company, which owns all of the issued and outstanding stock of KPLR, Inc., will be converted into a Delaware limited liability company, Tribune Broadcasting Company, LLC, which will be a wholly owned subsidiary of Tribune Company. |
| | | WPWC616 | |
| | | WPWC859 | |
| KSWB, Inc., Debtor-in-Possession (<i>Assignor</i>) | KSWB, LLC, Debtor-in-Possession (<i>Assignee</i>) | E080179 | Assignor will merge with and into KSWB, LLC, a wholly owned subsidiary of Tribune Broadcasting Company, LLC, a wholly owned subsidiary of Tribune Company. |

| Assignor or Transferor | Assignee or Transferee | Call Sign | Description |
|--|--|-----------------------|---|
| KTLA Inc., Debtor-in-Possession (Assignor) | KTLA, LLC, Debtor-in-Possession (Assignee) | KA69871 | Assignor will merge with and into KTLA, LLC, a wholly owned subsidiary of Tribune Broadcasting Company, LLC, a wholly owned subsidiary of Tribune Company. |
| | | WPQT713 | |
| | | WPQT714 | |
| | | WPYW951 | |
| | | WPZF492 | |
| | | WPZV880 | |
| | | WQHV526 | |
| | | E010013 | |
| | | E040245 | |
| | | E870836 | |
| | | E110041 ¹⁵ | |
| | | Pending Applications | |
| | | 0005166830 | |
| | | 0005163816 | |
| | | 0005157978 | |
| | | 0005157947 | |
| KWGN, Inc., Debtor-in-Possession (Assignor) | KWGN, LLC, Debtor-in-Possession (Assignee) | KNGW910 | Assignee will convert into KWGN, LLC, a wholly owned subsidiary of Tribune Broadcasting Company, LLC, a wholly owned subsidiary of Tribune Company. |
| | | WNTY263 | |
| | | WNTZ340 | |
| | | WPTJ722 | |
| | | WPXF213 | |
| | | E020240 | |
| | | E990179 | |
| <i>Licensee:</i> Los Angeles Times Communications, LLC, Debtor-in-Possession <i>Transferor:</i> Tribune Company, Debtor-in-Possession | <i>Transferee:</i> Tribune Publishing Company, LLC, Debtor-in-Possession <i>Licensee remains as:</i> Los Angeles Times Communications LLC, Debtor-in-Possession | KNNJ823 | Ownership and control of Los Angeles Times Communications, LLC, will be transferred from Tribune Company to Tribune Publishing Company, LLC, a wholly owned subsidiary of Tribune Company, and Tribune Los Angeles, Inc. will be merged into Los Angeles Times Communications, LLC. |
| | | KMH964 | |
| | | KNGL886 | |
| | | KRJ233 | |
| | | WNML710 | |
| | | WNML711 | |
| | | WXM802 | |
| | | KD26376 | |
| | | WPGW829 | |
| | | WPLR391 | |
| | | WPNY772 | |
| | | WPSD866 | |

¹⁵ Authorization issued after the filing of the Exit Applications.

| Assignor or Transferor | Assignee or Transferee | Call Sign | Description |
|---|--|------------------|---|
| Orlando Sentinel Communications Company, Debtor-in-Possession (<i>Assignee</i>) | Orlando Sentinel Communications Company, LLC, Debtor-in-Possession (<i>Assignor</i>) | KIM936 | Assignor will convert into Orlando Sentinel Communications Company, LLC, and the interests in the Orlando Sentinel Communications Company, LLC, will be assigned from Tribune Company to Tribune Publishing Company, LLC, so that Orlando Sentinel Communications Company, LLC, will become a wholly owned subsidiary of Tribune Publishing Company, LLC, a wholly owned subsidiary of Tribune Company. |
| | | WNYH803 | |
| | | WPNL352 | |
| Sun-Sentinel Company, Debtor-in-Possession (<i>Assignor</i>) | Sun-Sentinel Company, LLC, Debtor-in-Possession (<i>Assignee</i>) | WQFE854 | Assignor will convert into Sun-Sentinel Company, LLC, and the interests in Sun-Sentinel Company will be conveyed from Tribune Company to Tribune Publishing Company, LLC, so that Sun-Sentinel Company, LLC, will become a wholly owned subsidiary of Tribune Publishing Company, LLC, a wholly owned subsidiary of Tribune Company. |
| | | WPVI791 | |
| The Morning Call, Inc., Debtor-in-Possession (<i>Assignor</i>) | The Morning Call, LLC, Debtor-in-Possession. (<i>Assignee</i>) | WPDT670 | Assignor will merge with and into The Morning Call, LLC, a wholly owned subsidiary of Tribune Publishing Company, LLC, a wholly owned subsidiary of Tribune Company. |
| | | KER671 | |
| | | WPMP325 | |
| Tribune Broadcast Holdings, Inc., Debtor-in-Possession (<i>Assignor</i>) | Tribune Broadcasting Indianapolis, LLC, Debtor-in-Possession (<i>Assignee</i>) | E000117 | The licenses will be assigned to Tribune Broadcasting Indianapolis, LLC, a wholly owned subsidiary of Tribune Broadcasting Company, LLC, a wholly owned subsidiary of Tribune Company. |
| | | E940434 | |

| Assignor or Transferor | Assignee or Transferee | Call Sign | Description |
|--|--|------------------|--|
| Tribune Television Company, Debtor-in-Possession (<i>Assignor</i>) | KDAF, LLC, Debtor-in-Possession (<i>Assignee</i>) | WPPB659 | The licenses will be assigned to KDAF, LLC, a wholly owned subsidiary of Tribune Broadcasting Company, LLC, a wholly owned subsidiary of Tribune Company. |
| | | E000143 | |
| Tribune Television Company, Debtor-in-Possession (<i>Assignor</i>) | Tribune Broadcasting Hartford, LLC, Debtor-in-Possession (<i>Assignee</i>) | E880192 | The licenses will be assigned to Tribune Broadcasting Hartford, LLC, a wholly owned subsidiary of Tribune Broadcasting Company, LLC, a wholly owned subsidiary of Tribune Company. |
| | | E960251 | |
| | | E090014 | |
| Tribune Television Company, Debtor-in-Possession (<i>Assignor</i>) | WPMT, LLC, Debtor-in-Possession (<i>Assignee</i>) | WPVV416 | The licenses will be assigned to WPMT, LLC, a wholly owned subsidiary of Tribune Broadcasting Company, LLC, a wholly owned subsidiary of Tribune Company. |
| | | WPWD615 | |
| | | E030089 | |
| | | E910286 | |
| Tribune Television Company, Debtor-in-Possession (<i>Assignor</i>) | WPHL, LLC, Debtor-in-Possession (<i>Assignee</i>) | E861091 | The license will be assigned to WPHL, LLC, a wholly owned subsidiary of Tribune Broadcasting Company, LLC, a wholly owned subsidiary of Tribune Company. |

| Assignor or Transferor | Assignee or Transferee | Call Sign | Description |
|--|--|-----------------------|--|
| Tribune Television Company, Debtor-in-Possession (<i>Assignor</i>) | Tribune Broadcasting Indianapolis, LLC, Debtor-in-Possession (<i>Assignee</i>) | E010294 | The licenses will be assigned to Tribune Broadcasting Indianapolis, LLC, a wholly owned subsidiary of Tribune Broadcasting Company, LLC, a wholly owned subsidiary of Tribune Company. |
| | | E050094 | |
| | | E940358 | |
| | | E110039 ¹⁶ | |
| Tribune Television Holdings, Inc., Debtor-in-Possession (<i>Assignor</i>) | WXMI, LLC, Debtor-in-Possession (<i>Assignee</i>) | WNDA663 | The licenses will be assigned to WXMI, LLC, a wholly owned subsidiary of Tribune Broadcasting Company, LLC, a wholly owned subsidiary of Tribune Company. |
| | | WPOS479 | |
| | | WPXL969 | |
| | | E980505 | |
| | | WQOX723 ¹⁷ | |
| | | WQPE760 ¹⁸ | |
| Tribune Television New Orleans, Inc., Debtor-in-Possession (<i>Licensee</i>), a subsidiary of Tribune Broadcasting Company (<i>Transferor</i>) | Tribune Broadcasting Company, LLC, Debtor-in-Possession (<i>Transferee</i>) | E060339 | Control of Tribune Television New Orleans, Inc., will be transferred to Tribune Broadcasting Company, LLC, a wholly owned subsidiary of Tribune Company. |
| | | E070143 | |
| | | E090031 | |
| | | E960025 | |
| | | WPJD417 | |
| | | WPJD418 | |
| | | WPTC527 | |
| | | WPTC528 | |

¹⁶ Authorization issued after the filing of the Exit Applications.

¹⁷ The authorization for WQOX723 was issued after the filing of the Exit Applications. A notice of completion of construction has been filed for WQOX723.

¹⁸ The authorization for WQPE760 was issued after the filing of the Exit Applications. A notification of the completion of construction of the facility was filed with the Commission on June 7, 2012.

| Assignor or Transferor | Assignee or Transferee | Call Sign | Description |
|--|---|-----------------------|---|
| Tribune Television Northwest, Inc., Debtor-in-Possession (<i>Assignor</i>) | Tribune Broadcasting Seattle, LLC, Debtor-in-Possession (<i>Assignee</i>) | WPND900 | Assignor will convert into Tribune Broadcasting Seattle, LLC, a wholly owned subsidiary of Tribune Broadcasting Company, LLC, a wholly owned subsidiary of Tribune Company. |
| | | WPLP484 | |
| | | WPND901 | |
| | | WPNJ210 | |
| | | WPON880 | |
| | | WPON881 | |
| | | WPSS919 | |
| | | WPYH836 | |
| | | WQDR693 | |
| | | WPOQ408 | |
| | | E030207 | |
| | | E050057 | |
| | | E990062 | |
| | | E120001 ¹⁹ | |
| WGN Continental Broadcasting Company, Debtor-in-Possession (<i>Assignor</i>) | WGN Continental Broadcasting Company, LLC, Debtor-in-Possession (<i>Assignee</i>) | KNN1895 | Assignor will convert into WGN Continental Broadcasting Company, LLC, a wholly owned subsidiary of Tribune Broadcasting Company, LLC, a wholly owned subsidiary of Tribune Company. |
| | | WNTH421 | |
| | | WPMW586 | |
| | | WPNJ494 | |
| | | E030276 | |
| | | E040339 | |
| | | E980088 | |
| | | E090016 ²⁰ | |
| WPIX, Inc., Debtor-in-Possession (<i>Assignor</i>) | WPIX, LLC, Debtor-in-Possession (<i>Assignee</i>) | E110038 ²¹ | Assignor will convert into WPIX, LLC, a wholly owned subsidiary of Tribune Broadcasting Company, LLC, a wholly owned subsidiary of Tribune Company. |
| | | E860695 | |
| | | E970060 | |
| | | E040317 | |
| | | E120002 ²² | |
| | | WPNM862 | |
| | | WPOR428 | |

¹⁹ Authorization issued after the filing of the Exit Applications.

²⁰ License acquired from Channel 39, Inc., Debtor-in-Possession.

²¹ Authorization issued after the filing of the Exit Applications.

²² Authorization issued after the filing of the Exit Applications.

ATTACHMENT C

Attachment C is being filed with the Restructuring Application for WGN Continental Broadcasting Company, Debtor-in- Possession, licensee of WGN(AM) and WGN-TV, Chicago, Illinois, and is incorporated by reference in the other broadcast, satellite, wireless and CARS Restructuring Applications being filed concurrently with the WGN application.

ATTACHMENT D

Tribune's Broadcast Licensees
Prior to the Restructuring Transactions and Prior to Emergence from Bankruptcy
(Each is a Debtor-in-Possession.)

Tribune Company

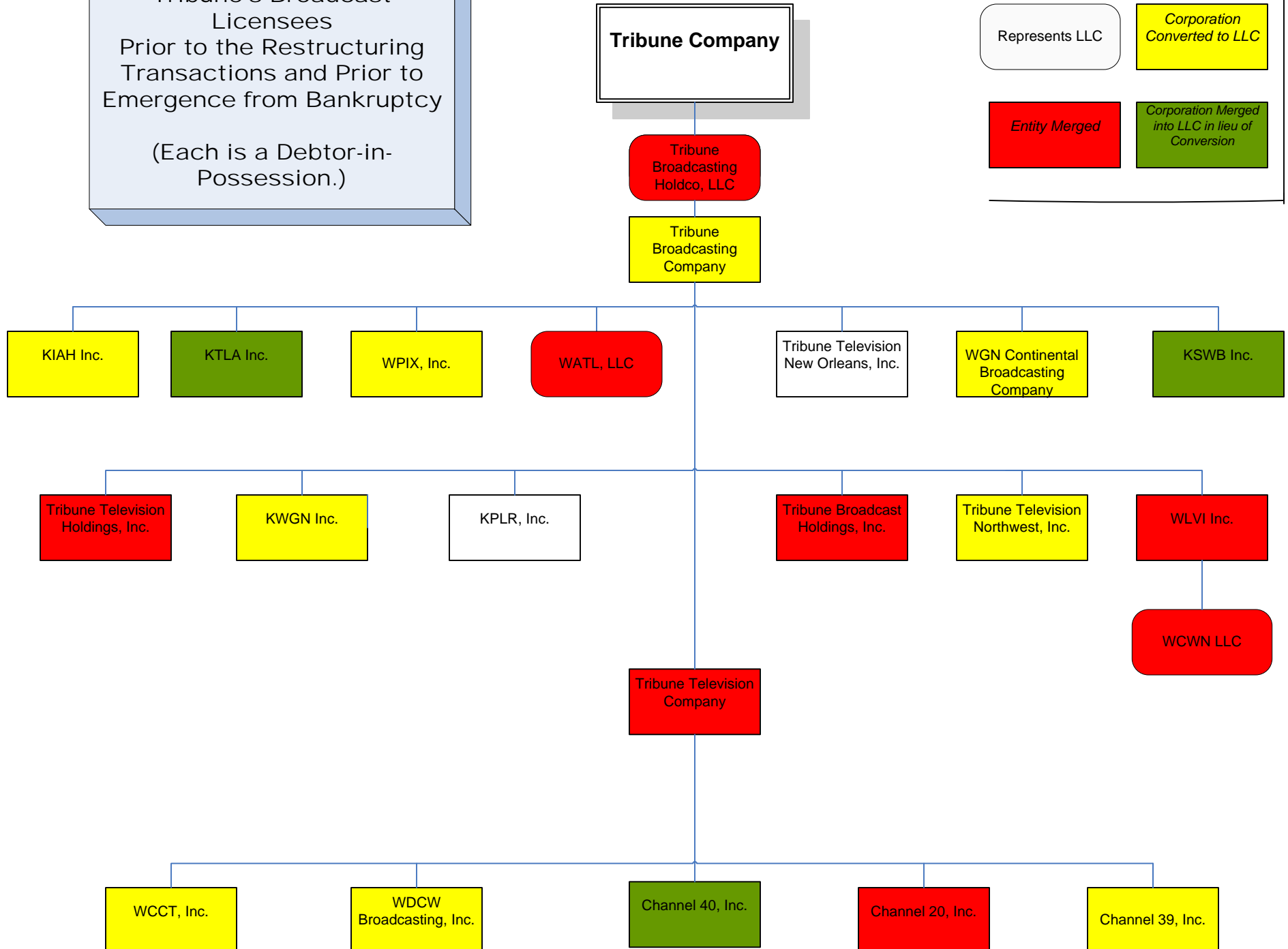
Legend

Represents LLC

Corporation
Converted to LLC

Entity Merged

Corporation Merged
into LLC in lieu of
Conversion



Legend

Represents LLC

Survivor of
Merger in lieu of
Conversion

LLC Converted
from a
Corporation

New Entity

Tribune's Broadcast Licensees After Consummation of the Restructuring Transactions

(The licensees remain as debtors-in-
possession until emergence from
bankruptcy following the grant of the Exit
Applications)

Tribune Company

Tribune
Broadcasting
Company, LLC

KPLR, Inc.

KTLA, LLC

KWGN, LLC

KIAH, LLC

WGN Continental
Broadcasting
Company, LLC

Tribune Television
New Orleans, Inc.

KSWB, LLC

WPIX, LLC

WDCW, LLC

WSFL, LLC

KTXL, LLC

WXMI, LLC

KDAF, LLC

WPHL, LLC

WPMT, LLC

KRCW, LLC

Tribune
Broadcasting
Hartford, LLC
(WTIC(TV) and
WCCT(TV))

Tribune
Broadcasting
Indianapolis, LLC
(WTTV(TV) and
WXIN(TV))

Tribune
Broadcasting
Seattle, LLC
(KCPQ(TV) and
KZJO(TV))