

Exhibit 19 Page 1
Community Public Radio, Inc.

The purpose of this exhibit is to show compliance with §73.525 of the Commission's Rules. The Rules require that an applicant proposing operation on FM Channel 201 must be 265 kilometers from a television Channel 6 facility.

There are four affected TV 6 stations.

1. WCES-DT - 107 km distant
2. WJBF - 135 km distant
3. WOOT-LP - 243 km distant
4. WATE-TV - 245 km distant

First, the relative HAAT figures were generated for the above stations using the NGDC 30 Second Database and the data from the FCC TV Database. The distance to the 47 dBu contour was predicted according to the procedures specified in §73.684 of the Commission's Rules, "Prediction of Coverage," using the F(50,50) curves in Figure 9 of §73.699.

The applicant chooses to use mixed polarity, and adjustments for television receiving antenna directivity have been utilized. As required in §73.525(e)(4)(ii) the permissible ERP is given by the following formula:

[H + (V/A)] is no greater than P

Where: H is the horizontally polarized ERP in kilowatts for mixed polarity;

V is the vertically polarized ERP in kilowatts for mixed polarity;

A is 40 dB if the predicted interference area lies entirely outside the limits of a city of 50,000 persons or more, or 10 if it does not; and

P is the maximum permitted horizontally polarized-only power in kilowatts.

The predicted interference area lies inside the limits of a city of 50,000 or more persons, thus the value of 10 was used for "A".

$$\begin{aligned} \text{ERP} &= [\text{ERPH} + (\text{ERPv}/10)] \\ &= 0.001 + (20.000/10) \\ &= 2.001 \text{ kW} \end{aligned}$$

Exhibit 19 Page 2
Community Public Radio, Inc.
NCE FM Interference to Television Channel 6
Patterson, Georgia

The interfering, 48 dB μ , contour was calculated using the maximum permitted horizontally polarized ERP of 2.001 kilowatts.

A table of the proposed NCE-FM F(50,10) interfering contour to the television channel 6 F(50,50) protected contour may be seen as Table 1 of this exhibit.

A plot of the proposed NCE-FM stations' 48.0 dB μ F(50,10) interfering contour to television channel 6 47 dB μ F(50,50) protected contour may be seen as Figures 1, 2 & 3 of this exhibit, note that the WATE-TV & WOOT-LP contours do not overlap. Therefore, it may be concluded that the proposed NCE FM station will not cause any interference to the reception of these TV-6 stations. The total area receiving interference is 419 square kilometers within the WCES-DT protected contour. The total population (2000 Census) receiving interference is 2,128 persons. The total area receiving interference is 675 square kilometers within the WJBF protected contour. The total population (2000 Census) receiving interference is 2,988 persons.

Because the population receiving interference is less than 3,000 persons, the application complies with §73.525 of the Commission's Rules as pertains to interference to the reception of TV Channel 6 by NCE-FM stations.

Exhibit 19 Table 1
Community Public Radio, Inc.
NCE FM Interfering Contour to TV 6
Patterson, Georgia

TV Contour dB	U/D Ratio dB	FM Contour dB
47.0	1.0	48.0

Interference Area to TV 6

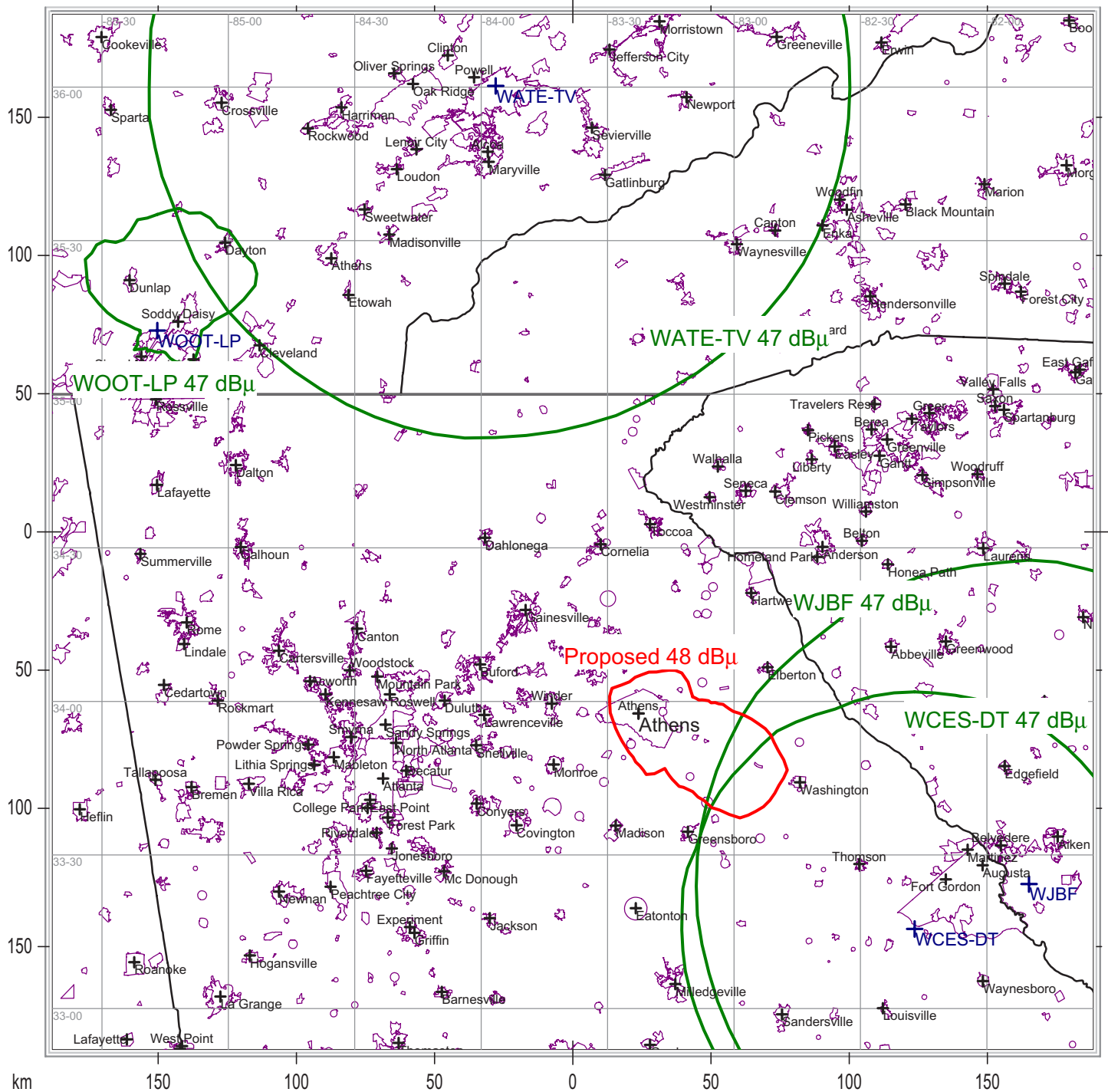


Exhibit 19 Figure 1
Community Public Radio, Inc.
Interference Area to TV 6
Patterson, Georgia

State Borders City Borders Lat/Lon Grid

Interference Area to WCES-DT TV 6

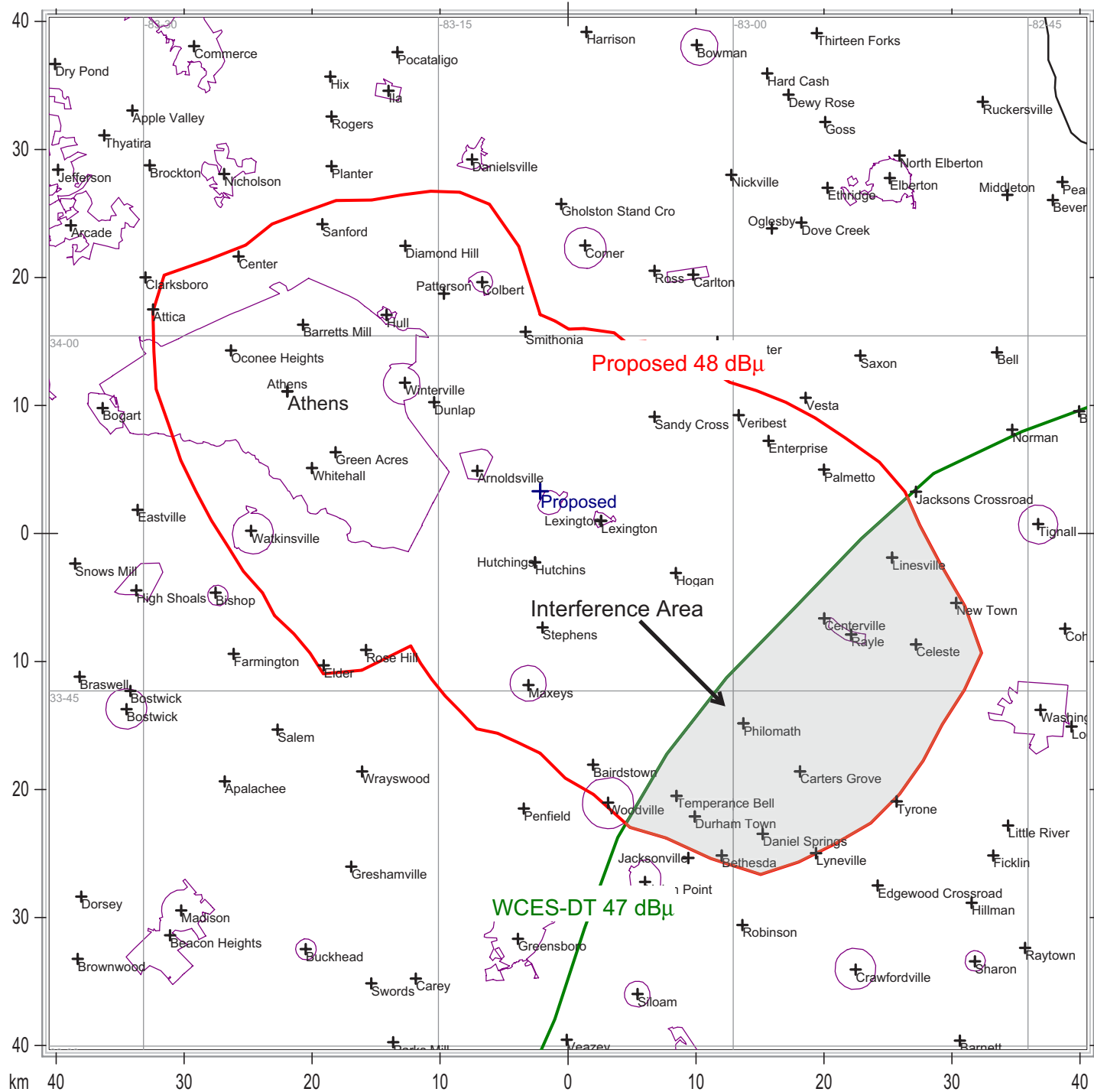


Exhibit 19 Figure 2
Community Public Radio, Inc.
Interference Area to WCES-DT TV 6
Patterson, Georgia

State Borders City Borders Lat/Lon Grid

Interference Area to WJBF TV 6

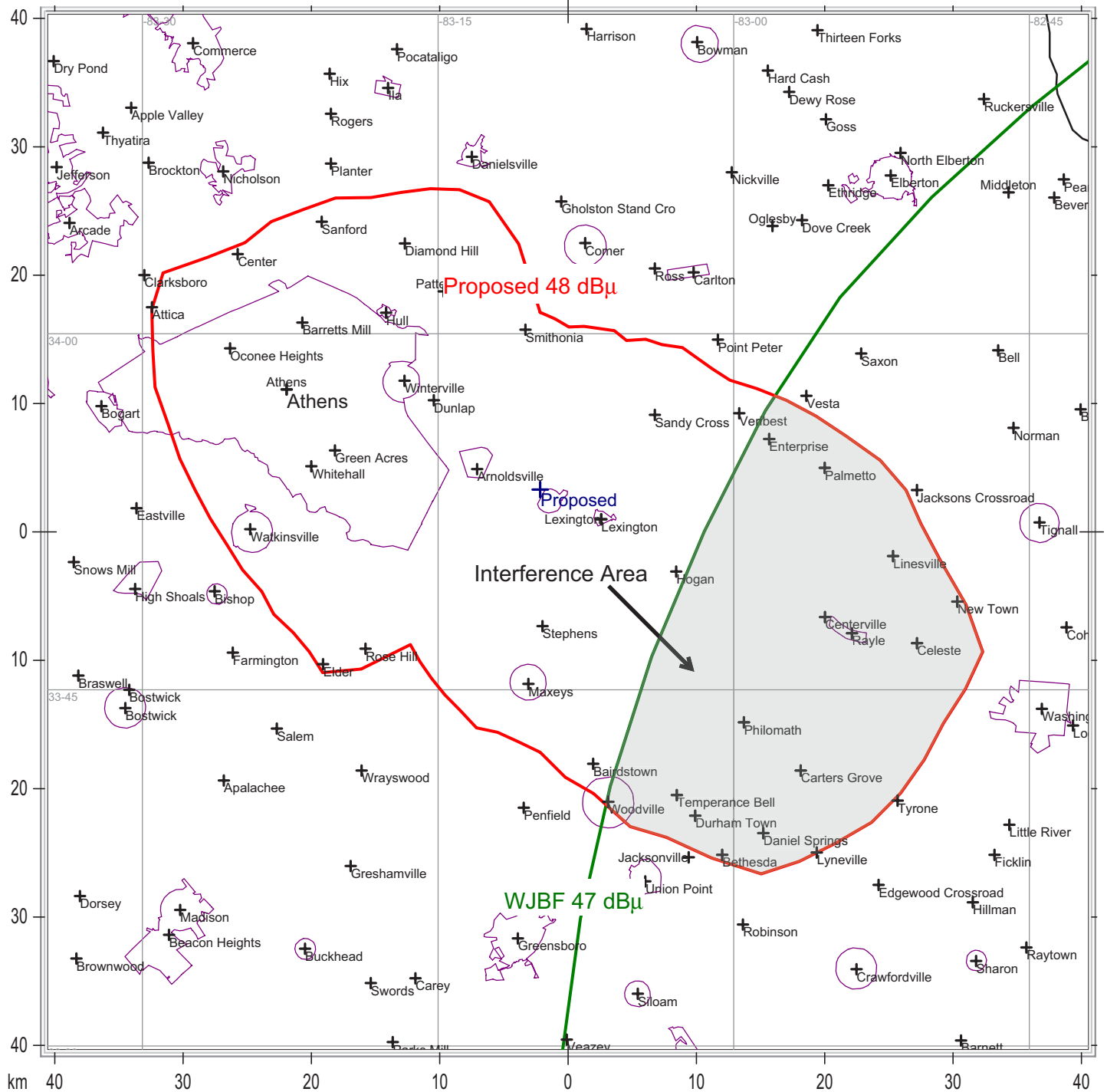


Exhibit 19 Figure 3
Community Public Radio, Inc.
Interference Area to WJBF TV 6
Patterson, Georgia

State Borders City Borders Lat/Lon Grid