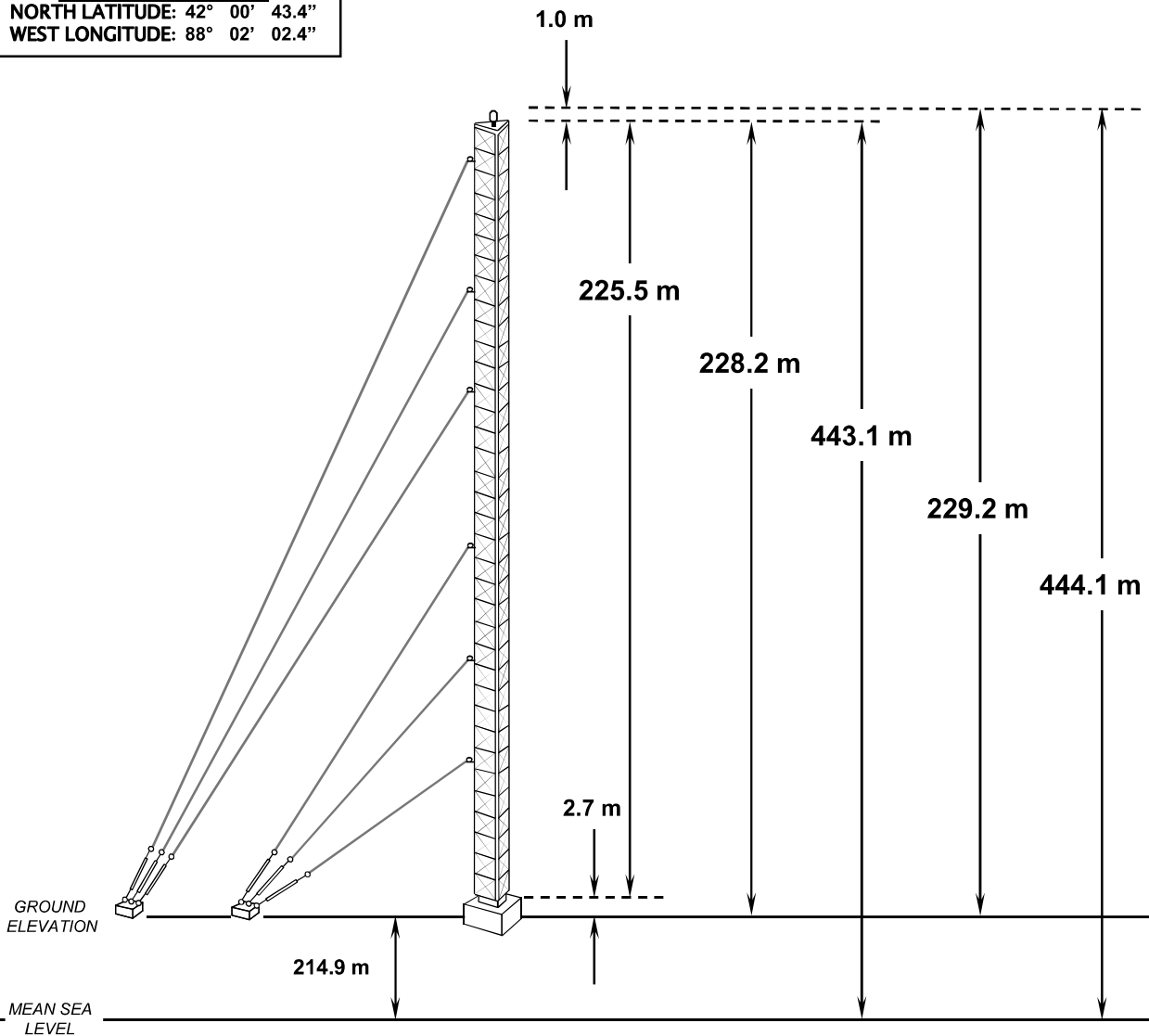


**COORDINATES NAD-27**  
NORTH LATITUDE: 42° 00' 43"  
WEST LONGITUDE: 88° 02' 02"

**COORDINATES NAD-83**  
NORTH LATITUDE: 42° 00' 43.4"  
WEST LONGITUDE: 88° 02' 02.4"

**FIGURE 1**



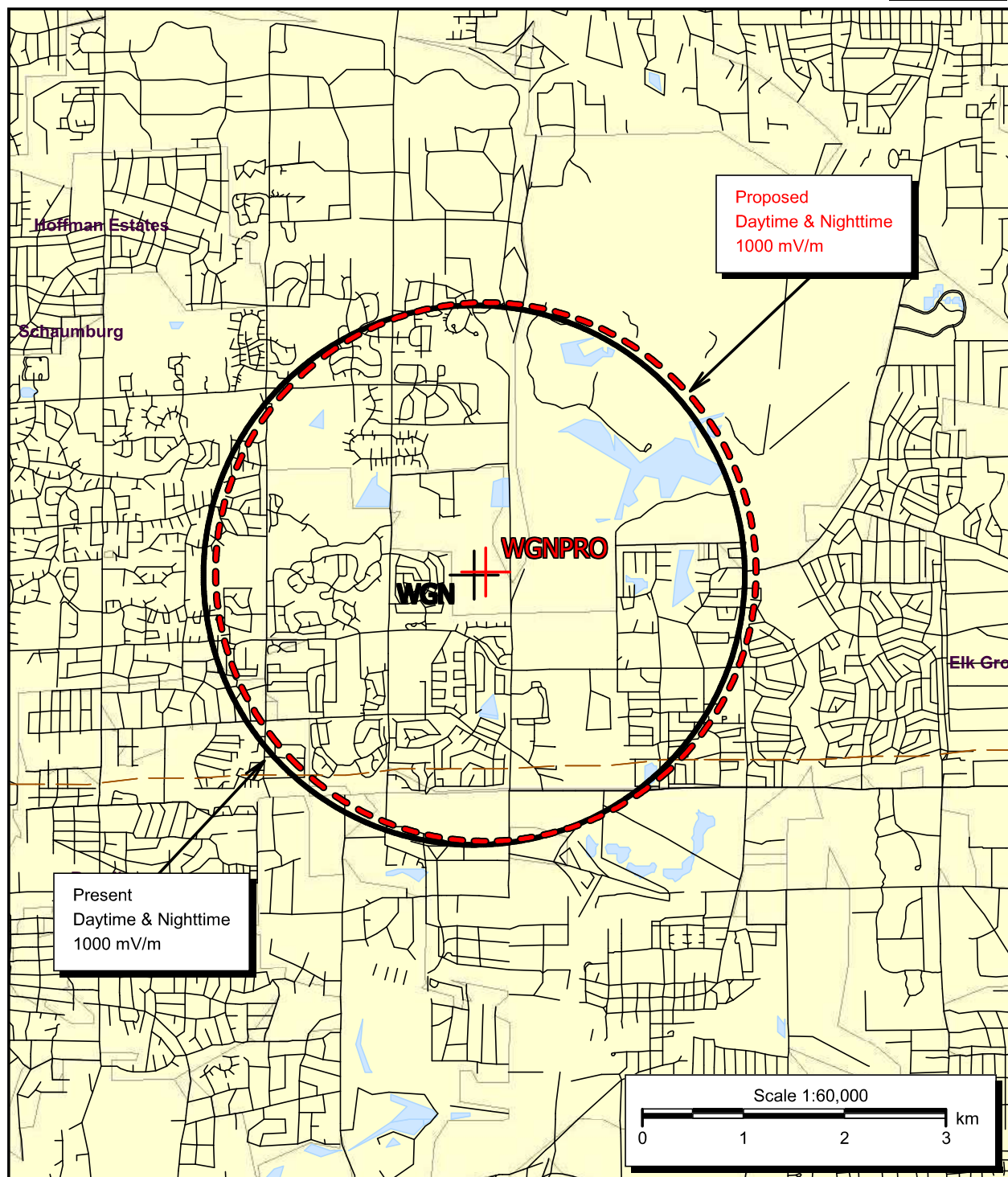
**VERTICAL PLAN ANTENNA SKETCH**

WGN - CHICAGO, ILLINOIS  
720 kHz - 50.0 kW DAY/50.0 kW NIGHT - ND-1  
OCTOBER, 2022



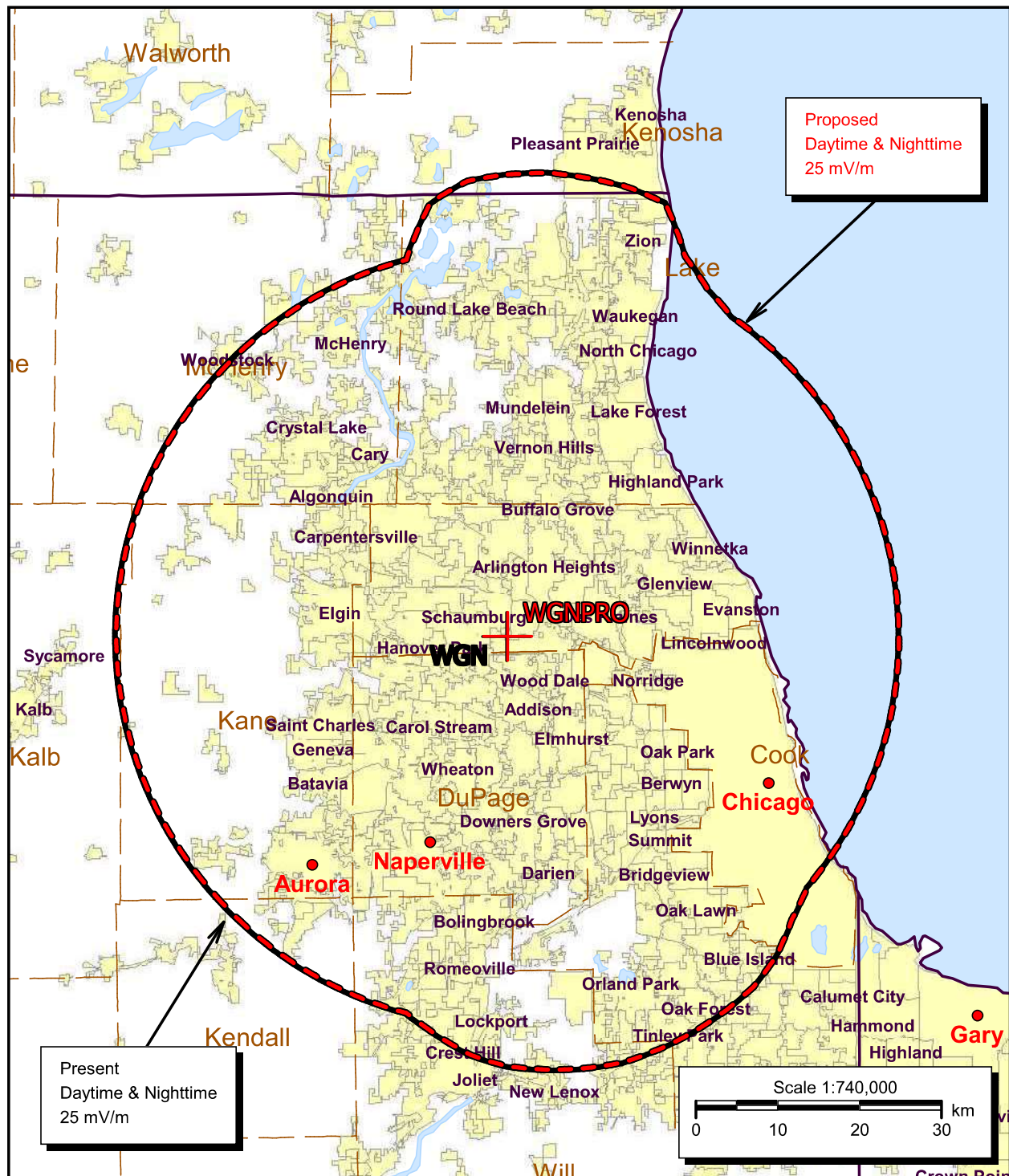
NOT DRAWN TO SCALE

FIGURE 2



PRESENT AND PROPOSED 1000 MV/M  
DAYTIME AND NIGHTTIME CONTOURS  
WGN - CHICAGO, ILLINOIS  
720 KHZ - 50.0 KW DAY/50.0 KW NIGHT - ND-1  
OCTOBER, 2022

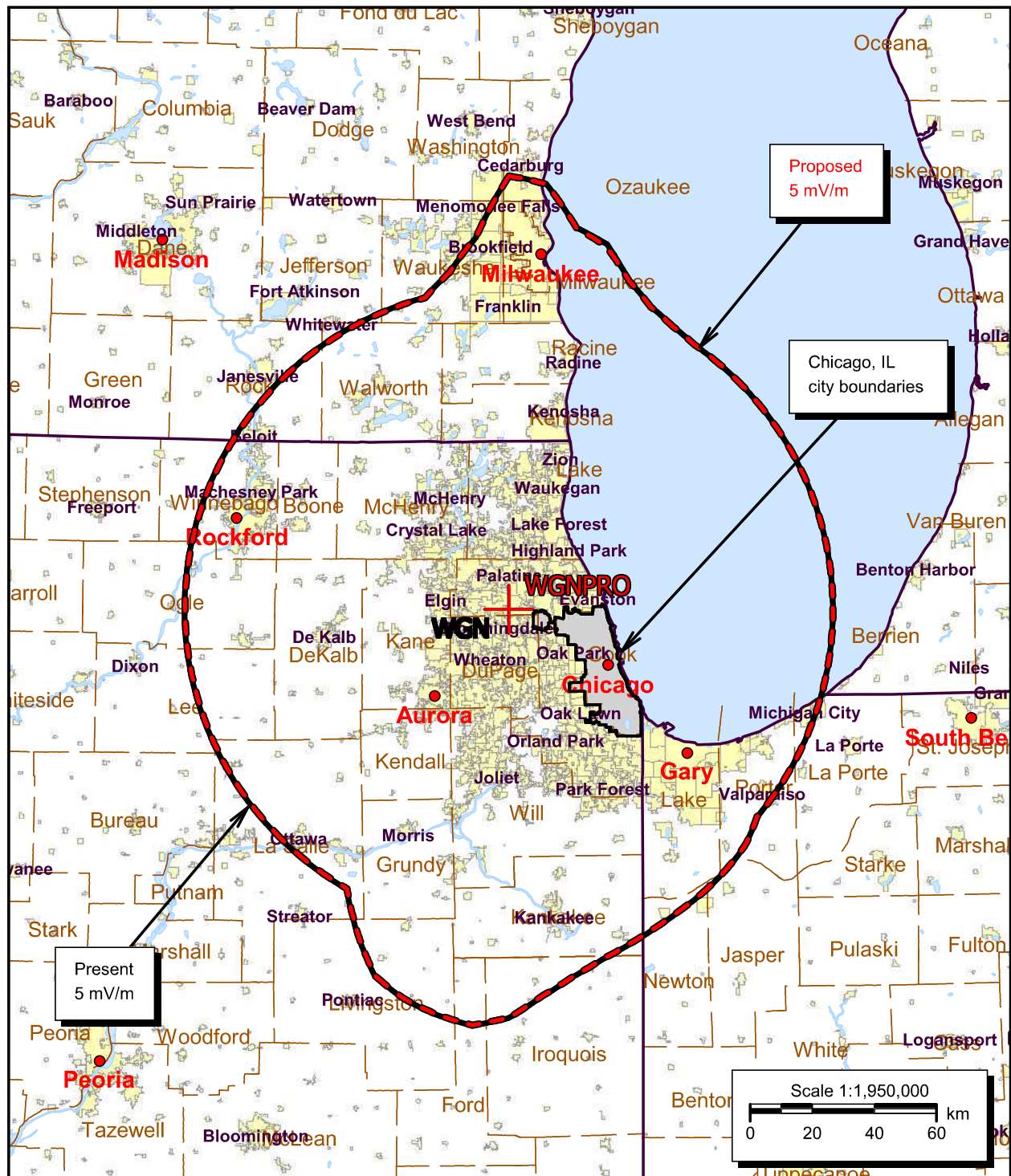
FIGURE 3



PRESENT AND PROPOSED 25.0 MV/M  
DAYTIME AND NIGHTTIME CONTOURS  
WGN - CHICAGO, ILLINOIS  
720 KHZ - 50.0 KW DAY/50.0 KW NIGHT - ND-1  
OCTOBER, 2022



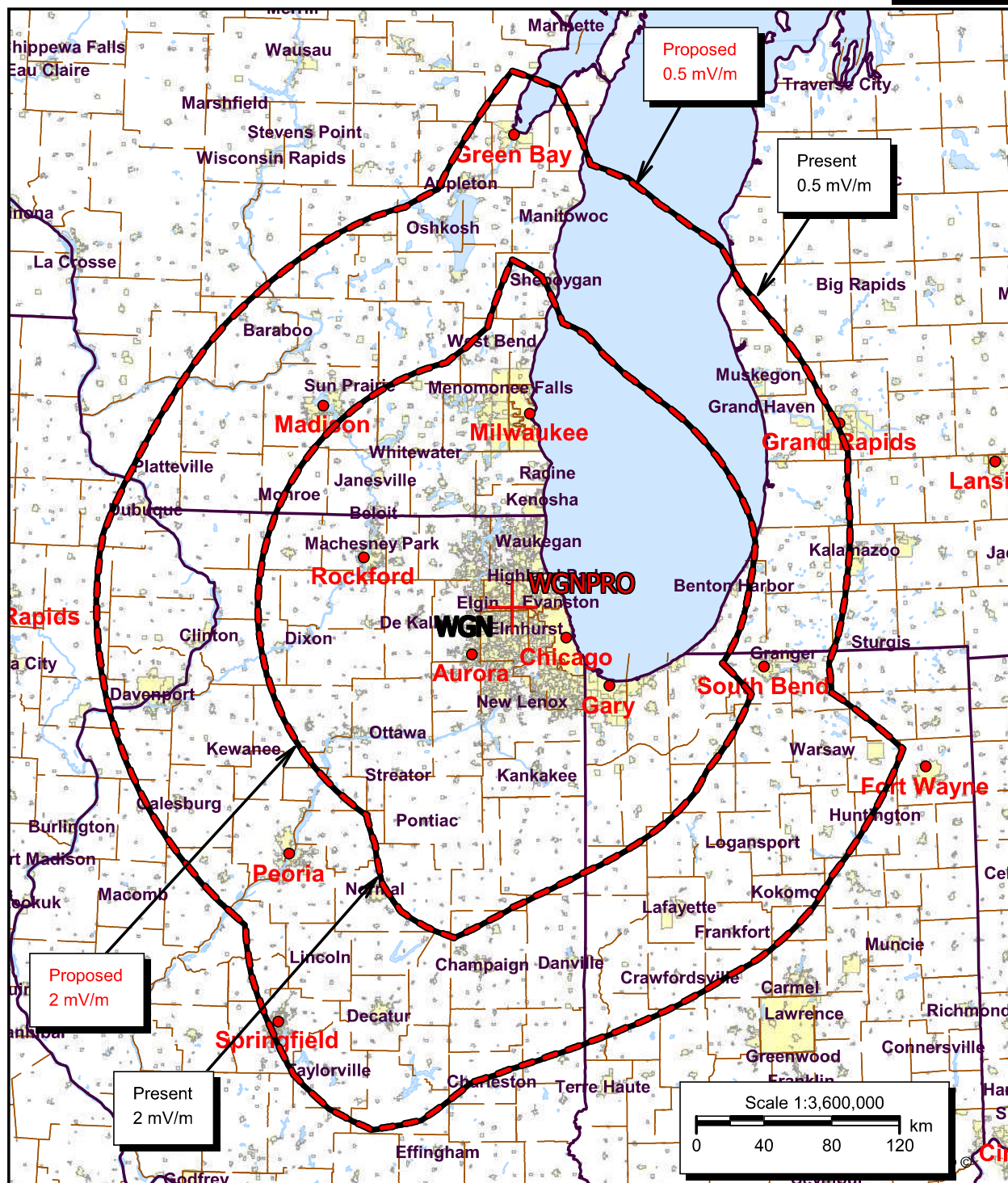
FIGURE 4



PRESENT AND PROPOSED 5.0 MV/M  
DAYTIME CONTOURS  
WGN - CHICAGO, ILLINOIS  
720 KHZ - 50.0 KW DAY/50.0 KW NIGHT - ND-1  
OCTOBER, 2022



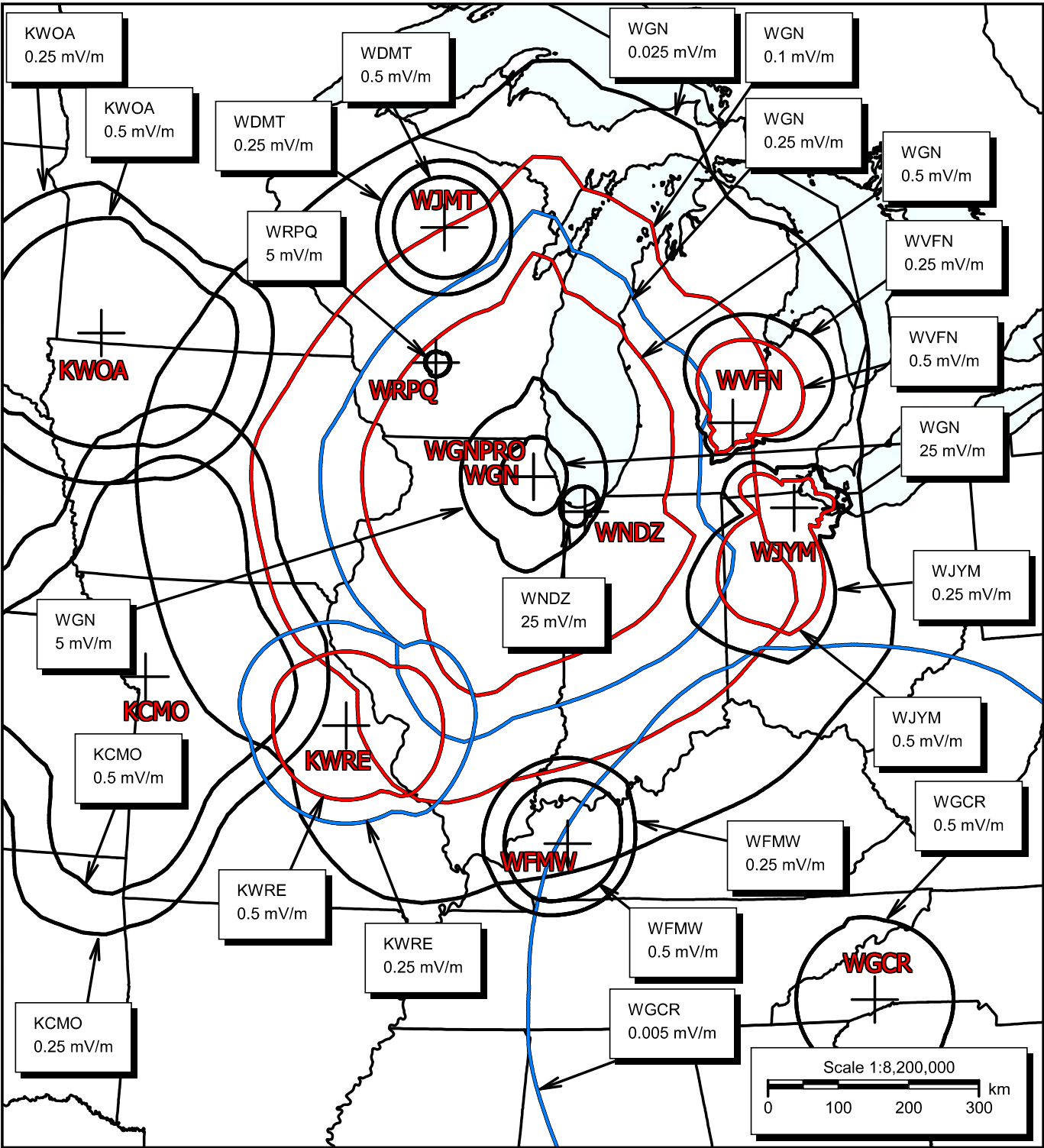
FIGURE 5



PRESENT AND PROPOSED 2.0 & 0.5 MV/M  
DAYTIME CONTOURS  
WGN - CHICAGO, ILLINOIS  
720 KHZ - 50.0 KW DAY/50.0 KW NIGHT - ND-1  
OCTOBER, 2022



FIGURE 6



DAYTIME ALLOCATION STUDY  
WGN - CHICAGO, ILLINOIS  
720 KHZ - 50.0 KW DAY/50.0 KW NIGHT - ND-1  
OCTOBER, 2022



## Night Allocation Protection Report

Call: WGN  
Freq: 720 kHz  
CHICAGO, IL, US  
Hours: U  
Lat: 42-00-43 N [NAD27]  
Lng: 088-02-02 W  
Power: 50.0 kW  
Theo RMS: 403.2 mV/m @ 1km @ 1kW

#	Field Ratio	Phase (deg)	Spacing (deg)	Orient (deg)	Height (deg)	Ref Swch	TL Swch	A (deg)	B (deg)	C (deg)	D (deg)
1	1.000	0.0	0.0	0.0	195.0	0	0	0.0	0.0	0.0	0.0

Call Letters	Ct	St	City	SWFF (100uV/m)	Req Prot (mV/m)	Permis (mV/m)	Cur Rad (mV/m)	Margin (mV/m)
WOR (0)	US	NY	NEW YORK	26.17	0.500	2813.02E	2808.65	4.37
WOR (5)	US	NY	NEW YORK	25.65	0.500	2814.89E	2810.52	4.38
WOR (10)	US	NY	NEW YORK	25.09	0.500	2816.73E	2812.34	4.38
WOR (15)	US	NY	NEW YORK	24.51	0.500	2818.52E	2814.13	4.39
WOR (20)	US	NY	NEW YORK	23.93	0.500	2820.27E	2815.87	4.40
WOR (25)	US	NY	NEW YORK	23.98	0.500	2820.27E	2815.87	4.40
WOR (30)	US	NY	NEW YORK	23.84	0.500	2821.98E	2817.57	4.41
WOR (35)	US	NY	NEW YORK	23.49	0.500	2821.99E	2817.57	4.41
WOR (40)	US	NY	NEW YORK	23.15	0.500	2823.65E	2819.24	4.42
WOR (45)	US	NY	NEW YORK	22.89	0.500	2825.28E	2820.86	4.42
WOR (50)	US	NY	NEW YORK	22.60	0.500	2825.28E	2820.86	4.43
WOR (55)	US	NY	NEW YORK	22.25	0.500	2826.87E	2822.44	4.43
WOR (60)	US	NY	NEW YORK	21.64	0.500	2829.91E	2825.47	4.44
WOR (65)	US	NY	NEW YORK	18.82	0.500	2838.05E	2833.57	4.47
WOR (70)	US	NY	NEW YORK	16.74	0.500	2843.68E	2839.18	4.50
WOR (75)	US	NY	NEW YORK	15.28	1.681	5501.55g	2842.91	2658.64
WOR (80)	US	NY	NEW YORK	20.40	0.500	2834.18E	2829.71	4.47
WOR (85)	US	NY	NEW YORK	21.26	0.500	2831.38E	2826.92	4.46
WOR (90)	US	NY	NEW YORK	20.72	0.658	2832.80E	2828.34	4.47
WOR (95)	US	NY	NEW YORK	21.92	1.370	3126.16g	2825.47	300.69
WOR (100)	US	NY	NEW YORK	22.67	2.680	5910.67g	2822.44	3088.23
WOR (105)	US	NY	NEW YORK	23.18	3.897	8407.38g	2820.86	5586.52
WOR (110)	US	NY	NEW YORK	23.56	5.257	11153.52g	2820.86	8332.66
WOR (115)	US	NY	NEW YORK	23.88	5.590	11704.14g	2819.24	8884.90
WOR (120)	US	NY	NEW YORK	24.14	5.766	11941.25g	2819.24	9122.01
WOR (125)	US	NY	NEW YORK	24.37	9.652	19800.79g	2817.57	16983.21
WOR (130)	US	NY	NEW YORK	24.58	22.268	45303.45g	2817.57	42485.88
WOR (135)	US	NY	NEW YORK	24.76	21.423	43264.10g	2815.87	40448.23
WOR (140)	US	NY	NEW YORK	24.93	16.201	32498.75g	2815.87	29682.88
WOR (145)	US	NY	NEW YORK	25.08	12.811	25538.11g	2815.87	22722.24

FIGURE 7  
Page 2 of 13

Call Letters	Ct	St	City	SWFF (100uV/m)	Req Prot (mV/m)	Permis (mV/m)	Cur Rad (mV/m)	Margin (mV/m)
WOR (150)	US	NY	NEW YORK	25.23	13.822	27390.00g	2815.87	24574.13
WOR (155)	US	NY	NEW YORK	25.22	13.886	27526.43g	2815.87	24710.56
WOR (160)	US	NY	NEW YORK	25.08	12.687	25296.87g	2815.87	22481.00
WOR (165)	US	NY	NEW YORK	25.13	20.706	41193.34g	2815.87	38377.47
WOR (170)	US	NY	NEW YORK	25.20	10.746	21318.17g	2815.87	18502.30
WOR (175)	US	NY	NEW YORK	25.29	4.666	9224.54g	2817.57	6406.96
WOR (180)	US	NY	NEW YORK	25.65	2.323	4526.88g	2815.87	1711.01
WOR (185)	US	NY	NEW YORK	26.10	0.918	2818.57E	2814.13	4.44
WOR (190)	US	NY	NEW YORK	26.63	0.682	2816.78E	2812.34	4.44
WOR (195)	US	NY	NEW YORK	27.26	0.500	2814.95E	2810.52	4.44
WOR (200)	US	NY	NEW YORK	27.92	0.500	2813.08E	2808.65	4.43
WOR (205)	US	NY	NEW YORK	28.62	0.500	2811.16E	2806.74	4.42
WOR (210)	US	NY	NEW YORK	29.34	0.500	2807.21E	2802.80	4.41
WOR (215)	US	NY	NEW YORK	30.12	0.500	2805.17E	2800.77	4.40
WOR (220)	US	NY	NEW YORK	30.90	0.500	2803.09E	2798.70	4.39
WOR (225)	US	NY	NEW YORK	32.16	0.500	2796.62E	2792.25	4.38
WOR (230)	US	NY	NEW YORK	32.41	0.500	2796.62E	2792.25	4.37
WOR (235)	US	NY	NEW YORK	33.08	0.500	2792.10E	2787.74	4.35
WOR (240)	US	NY	NEW YORK	33.65	0.500	2789.77E	2785.43	4.34
WOR (245)	US	NY	NEW YORK	34.09	0.500	2787.41E	2783.08	4.33
WOR (250)	US	NY	NEW YORK	34.36	0.500	2787.40E	2783.08	4.33
WOR (255)	US	NY	NEW YORK	34.44	0.500	2785.00E	2780.69	4.32
WOR (260)	US	NY	NEW YORK	34.28	0.500	2785.00E	2780.69	4.31
WOR (265)	US	NY	NEW YORK	33.24	0.500	2789.75E	2785.43	4.32
WOR (270)	US	NY	NEW YORK	32.25	0.500	2792.07E	2787.74	4.33
WOR (275)	US	NY	NEW YORK	31.24	0.500	2796.59E	2792.25	4.34
WOR (280)	US	NY	NEW YORK	29.96	0.500	2800.94E	2796.59	4.35
WOR (285)	US	NY	NEW YORK	30.07	0.500	2800.94E	2796.59	4.35
WOR (290)	US	NY	NEW YORK	30.22	0.500	2800.94E	2796.59	4.35
WOR (295)	US	NY	NEW YORK	29.60	0.500	2803.05E	2798.70	4.35
WOR (300)	US	NY	NEW YORK	29.39	0.500	2803.05E	2798.70	4.35
WOR (305)	US	NY	NEW YORK	29.56	0.500	2800.94E	2796.59	4.35
WOR (310)	US	NY	NEW YORK	29.52	0.500	2800.93E	2796.59	4.34
WOR (315)	US	NY	NEW YORK	29.37	0.500	2803.05E	2798.70	4.35
WOR (320)	US	NY	NEW YORK	29.07	0.500	2803.05E	2798.70	4.35
WOR (325)	US	NY	NEW YORK	28.65	0.500	2805.13E	2800.77	4.35
WOR (330)	US	NY	NEW YORK	28.16	0.500	2807.16E	2802.80	4.36
WOR (335)	US	NY	NEW YORK	27.69	0.500	2809.16E	2804.79	4.37
WOR (340)	US	NY	NEW YORK	27.48	0.500	2809.16E	2804.79	4.37
WOR (345)	US	NY	NEW YORK	27.29	0.500	2809.16E	2804.79	4.37
WOR (350)	US	NY	NEW YORK	26.94	0.500	2811.11E	2806.74	4.37
WOR (355)	US	NY	NEW YORK	26.60	0.500	2811.11E	2806.74	4.37
CHTN/A	CA	PE	CHARLOTTETOWN	9.98	5.697	2854.53	2850.03	4.50
50% = 6.523, 25% = 6.523; WGN=5.70 UNK-A=3.18								
CHTN/A	CA	PE	CHARLOTTETOWN	9.98	5.697	2854.53	2850.03	4.50
50% = 6.523, 25% = 6.523; WGN=5.70 UNK-A=3.18								



FIGURE 7  
Page 3 of 13

Call Letters	Ct	St	City	SWFF (100uV/m)	Req Prot (mV/m)	Permis (mV/m)	Cur Rad (mV/m)	Margin (mV/m)
WDSM	US	WI	SUPERIOR	72.86	3.743	2568.44	2563.74	4.70
50% = 11.438, 25% = 12.789; KCMO=11.44 KNUS=4.33 WGN=3.74								
UNK-A (0)	GL		SIMIUTAQ	2.17	1.242	2856.22S	2851.39	4.83
50% = 1.819, 25% = 1.875; CHTN/A=1.33 WGN=1.24 NEW MEDICINE HAT/ =0.46								
UNK-A (5)	GL		SIMIUTAQ	2.11	1.204	2856.22S	2851.39	4.83
50% = 1.761, 25% = 1.816; CHTN/A=1.29 WGN=1.20 NEW MEDICINE HAT/ =0.44								
UNK-A (10)	GL		SIMIUTAQ	2.05	1.172	2856.24S	2851.39	4.85
50% = 1.713, 25% = 1.713; CHTN/A=1.25 WGN=1.17								
UNK-A (15)	GL		SIMIUTAQ	2.00	1.145	2856.24S	2851.39	4.85
50% = 1.671, 25% = 1.671; CHTN/A=1.22 WGN=1.14								
UNK-A (20)	GL		SIMIUTAQ	1.96	1.119	2856.23S	2851.39	4.84
50% = 1.635, 25% = 1.635; CHTN/A=1.19 WGN=1.12								
UNK-A (25)	GL		SIMIUTAQ	1.92	1.095	2856.23S	2851.39	4.84
50% = 1.604, 25% = 1.604; CHTN/A=1.17 WGN=1.10								
UNK-A (30)	GL		SIMIUTAQ	1.88	1.074	2856.22S	2851.39	4.83
50% = 1.579, 25% = 1.628; CHTN/A=1.16 WGN=1.07 ZYI-770-A=0.40								
UNK-A (35)	GL		SIMIUTAQ	1.85	1.054	2856.22S	2851.39	4.83
50% = 1.557, 25% = 1.608; CHTN/A=1.15 WGN=1.05 ZYI-770-A=0.40								
UNK-A (40)	GL		SIMIUTAQ	1.81	1.037	2856.22S	2851.39	4.83
50% = 1.541, 25% = 1.592; CHTN/A=1.14 WGN=1.04 ZYI-770-A=0.40								
UNK-A (45)	GL		SIMIUTAQ	1.79	1.022	2856.22S	2851.39	4.82
50% = 1.528, 25% = 1.582; CHTN/A=1.14 WGN=1.02 ZYI-770-A=0.41								
UNK-A (50)	GL		SIMIUTAQ	1.77	1.009	2856.21S	2851.39	4.81
50% = 1.521, 25% = 1.575; CHTN/A=1.14 WGN=1.01 ZYI-770-A=0.41								
UNK-A (55)	GL		SIMIUTAQ	1.75	0.999	2856.21S	2851.39	4.81
50% = 1.517, 25% = 1.574; CHTN/A=1.14 WGN=1.00 ZYI-770-A=0.42								
UNK-A (60)	GL		SIMIUTAQ	1.74	0.991	2856.20S	2851.39	4.81
50% = 1.519, 25% = 1.577; CHTN/A=1.15 WGN=0.99 ZYI-770-A=0.42								
UNK-A (65)	GL		SIMIUTAQ	1.73	0.986	2856.20S	2851.39	4.81
50% = 1.526, 25% = 1.585; CHTN/A=1.16 WGN=0.99 ZYI-770-A=0.43								
UNK-A (70)	GL		SIMIUTAQ	1.72	0.984	2856.20S	2851.39	4.81
50% = 1.541, 25% = 1.6; CHTN/A=1.19 WGN=0.98 ZYI-770-A=0.43								
UNK-A (75)	GL		SIMIUTAQ	1.72	0.984	2856.20S	2851.39	4.80
50% = 1.561, 25% = 1.621; CHTN/A=1.21 WGN=0.98 ZYI-770-A=0.44								
UNK-A (80)	GL		SIMIUTAQ	1.73	0.987	2856.20S	2851.39	4.80
50% = 1.587, 25% = 1.648; CHTN/A=1.24 WGN=0.99 ZYI-770-A=0.45								
UNK-A (85)	GL		SIMIUTAQ	1.74	0.992	2856.19S	2851.39	4.80
50% = 1.62, 25% = 1.682; CHTN/A=1.28 WGN=0.99 ZYI-770-A=0.45								
UNK-A (90)	GL		SIMIUTAQ	1.75	1.000	2856.19S	2851.39	4.80
50% = 1.664, 25% = 1.726; CHTN/A=1.33 WGN=1.00 ZYI-770-A=0.46								
UNK-A (95)	GL		SIMIUTAQ	1.77	1.010	2856.19S	2851.39	4.80
50% = 1.717, 25% = 1.778; CHTN/A=1.39 WGN=1.01 ZYI-770-A=0.47								
UNK-A (100)	GL		SIMIUTAQ	1.79	1.023	2856.20S	2851.39	4.81
50% = 1.769, 25% = 1.831; CHTN/A=1.44 WGN=1.02 ZYI-770-A=0.47								
UNK-A (105)	GL		SIMIUTAQ	1.82	1.038	2856.20S	2851.39	4.80
50% = 1.821, 25% = 1.883; CHTN/A=1.50 WGN=1.04 ZYI-770-A=0.48								

FIGURE 7  
Page 4 of 13

Call Letters	Ct	St	City	SWFF (100uV/m)	Req Prot (mV/m)	Permis (mV/m)	Cur Rad (mV/m)	Margin (mV/m)
UNK-A (110)	GL		SIMIUTAQ	1.85	1.056	2856.20S	2851.39	4.80
50% = 1.887,	25%		1.949; CHTN/A=1.56 WGN=1.06					
UNK-A (115)	GL		SIMIUTAQ	1.88	1.076	2856.20S	2851.39	4.81
50% = 1.982,	25%		1.982; CHTN/A=1.66 WGN=1.08					
UNK-A (120)	GL		SIMIUTAQ	1.92	1.098	2856.20S	2851.39	4.81
50% = 2.088,	25%		2.088; CHTN/A=1.78 WGN=1.10					
UNK-A (125)	GL		SIMIUTAQ	1.96	1.122	2856.20S	2851.39	4.81
50% = 2.205,	25%		2.205; CHTN/A=1.90 WGN=1.12					
UNK-A (130)	GL		SIMIUTAQ	2.01	1.148	2856.21S	2851.39	4.81
50% = 2.34,	25%		2.34; CHTN/A=2.04 WGN=1.15					
UNK-A (135)	GL		SIMIUTAQ	2.06	1.176	2856.21S	2851.39	4.81
50% = 2.497,	25%		2.497; CHTN/A=2.20 WGN=1.18					
UNK-A (140)	GL		SIMIUTAQ	2.12	1.208	2856.18S	2851.39	4.78
50% = 2.699,	25%		2.699; CHTN/A=2.41 WGN=1.21					
UNK-A (145)	GL		SIMIUTAQ	2.18	1.335	3058.98S	2851.39	207.59
50% = 2.67,	25%		2.947; CHTN/A=2.67 WGN=1.25					
UNK-A (150)	GL		SIMIUTAQ	2.26	1.479	3272.83S	2851.39	421.44
50% = 2.959,	25%		3.228; CHTN/A=2.96 WGN=1.29					
UNK-A (155)	GL		SIMIUTAQ	2.35	1.646	3505.90S	2851.39	654.50
50% = 3.292,	25%		3.555; CHTN/A=3.29 WGN=1.34					
UNK-A (160)	GL		SIMIUTAQ	2.44	1.845	3786.98S	2851.39	935.59
50% = 3.69,	25%		3.943; CHTN/A=3.69 WGN=1.39					
UNK-A (165)	GL		SIMIUTAQ	2.53	2.082	4114.39S	2851.39	1262.99
50% = 4.163,	25%		4.407; CHTN/A=4.16 WGN=1.45					
UNK-A (170)	GL		SIMIUTAQ	2.64	2.357	4470.49S	2851.39	1619.09
50% = 4.713,	25%		4.948; CHTN/A=4.71 WGN=1.51					
UNK-A (175)	GL		SIMIUTAQ	2.75	2.659	4832.22S	2851.39	1980.83
50% = 5.317,	25%		5.545; CHTN/A=5.32 WGN=1.57					
UNK-A (180)	GL		SIMIUTAQ	2.87	2.960	5149.32S	2851.39	2297.93
50% = 5.92,	25%		6.144; CHTN/A=5.92 WGN=1.64					
UNK-A (185)	GL		SIMIUTAQ	2.99	3.274	5467.73S	2851.39	2616.33
50% = 6.548,	25%		6.768; CHTN/A=6.55 WGN=1.71					
UNK-A (190)	GL		SIMIUTAQ	3.12	3.596	5764.59S	2851.39	2913.20
50% = 7.193,	25%		7.193; CHTN/A=7.19					
UNK-A (195)	GL		SIMIUTAQ	3.26	3.913	5996.99S	2851.39	3145.60
50% = 7.825,	25%		7.825; CHTN/A=7.83					
UNK-A (200)	GL		SIMIUTAQ	3.40	4.209	6188.05S	2851.39	3336.66
50% = 8.418,	25%		8.418; CHTN/A=8.42					
UNK-A (205)	GL		SIMIUTAQ	3.53	4.475	6334.72S	2851.39	3483.33
50% = 8.95,	25%		8.95; CHTN/A=8.95					
UNK-A (210)	GL		SIMIUTAQ	3.67	4.697	6403.21S	2851.39	3551.81
50% = 9.393,	25%		9.393; CHTN/A=9.39					
UNK-A (215)	GL		SIMIUTAQ	3.80	4.858	6387.12S	2851.39	3535.73
50% = 9.717,	25%		9.717; CHTN/A=9.72					
UNK-A (220)	GL		SIMIUTAQ	3.93	4.949	6292.02S	2851.39	3440.63
50% = 9.899,	25%		9.899; CHTN/A=9.90					
UNK-A (225)	GL		SIMIUTAQ	4.06	4.966	6120.51S	2851.39	3269.12
50% = 9.933,	25%		9.933; CHTN/A=9.93					

FIGURE 7  
Page 5 of 13

Call Letters	Ct	St	City	SWFF (100uV/m)	Req Prot (mV/m)	Permis (mV/m)	Cur Rad (mV/m)	Margin (mV/m)
UNK-A (230)	GL		SIMIUTAQ	4.17	4.907	5889.89S	2851.39	3038.49
50% = 9.815,	25% = 9.815;		CHTN/A=9.81					
UNK-A (235)	GL		SIMIUTAQ	4.26	4.769	5601.39S	2851.39	2749.99
50% = 9.539,	25% = 9.844;		CHTN/A=9.54 WGN=2.43					
UNK-A (240)	GL		SIMIUTAQ	4.33	4.565	5270.78S	2851.39	2419.39
50% = 9.131,	25% = 9.46;		CHTN/A=9.13 WGN=2.47					
UNK-A (245)	GL		SIMIUTAQ	4.38	4.308	4917.02S	2851.39	2065.63
50% = 8.616,	25% = 8.972;		CHTN/A=8.62 WGN=2.50					
UNK-A (250)	GL		SIMIUTAQ	4.41	4.011	4552.80S	2851.39	1701.40
50% = 8.022,	25% = 8.408;		CHTN/A=8.02 WGN=2.52					
UNK-A (255)	GL		SIMIUTAQ	4.40	3.689	4188.74S	2851.39	1337.35
50% = 7.378,	25% = 7.795;		CHTN/A=7.38 WGN=2.52					
UNK-A (260)	GL		SIMIUTAQ	4.38	3.360	3838.52S	2851.39	987.12
50% = 6.719,	25% = 7.169;		CHTN/A=6.72 WGN=2.50					
UNK-A (265)	GL		SIMIUTAQ	4.32	3.037	3511.87S	2851.39	660.48
50% = 6.074,	25% = 6.557;		CHTN/A=6.07 WGN=2.47					
UNK-A (270)	GL		SIMIUTAQ	4.25	2.717	3198.71S	2851.39	347.31
50% = 5.435,	25% = 5.952;		CHTN/A=5.43 WGN=2.43					
UNK-A (275)	GL		SIMIUTAQ	4.15	2.404	2893.08S	2851.39	41.68
50% = 4.808,	25% = 5.361;		CHTN/A=4.81 WGN=2.37					
UNK-A (280)	GL		SIMIUTAQ	4.04	2.310	2856.14S	2851.39	4.75
50% = 4.841,	25% = 4.841;		CHTN/A=4.25 WGN=2.31					
UNK-A (285)	GL		SIMIUTAQ	3.92	2.238	2856.15S	2851.39	4.75
50% = 4.393,	25% = 4.393;		CHTN/A=3.78 WGN=2.24					
UNK-A (290)	GL		SIMIUTAQ	3.79	2.164	2856.16S	2851.39	4.77
50% = 4.019,	25% = 4.019;		CHTN/A=3.39 WGN=2.16					
UNK-A (295)	GL		SIMIUTAQ	3.65	2.086	2856.17S	2851.39	4.77
50% = 3.696,	25% = 3.696;		CHTN/A=3.05 WGN=2.09					
UNK-A (300)	GL		SIMIUTAQ	3.52	2.009	2856.19S	2851.39	4.79
50% = 3.41,	25% = 3.41;		CHTN/A=2.75 WGN=2.01					
UNK-A (305)	GL		SIMIUTAQ	3.39	1.934	2856.19S	2851.39	4.80
50% = 3.158,	25% = 3.158;		CHTN/A=2.50 WGN=1.93					
UNK-A (310)	GL		SIMIUTAQ	3.25	1.854	2856.18S	2851.39	4.78
50% = 2.952,	25% = 2.952;		CHTN/A=2.30 WGN=1.85					
UNK-A (315)	GL		SIMIUTAQ	3.10	1.773	2856.18S	2851.39	4.79
50% = 2.768,	25% = 2.768;		CHTN/A=2.13 WGN=1.77					
UNK-A (320)	GL		SIMIUTAQ	2.98	1.703	2856.21S	2851.39	4.81
50% = 2.615,	25% = 2.615;		CHTN/A=1.98 WGN=1.70					
UNK-A (325)	GL		SIMIUTAQ	2.86	1.634	2856.19S	2851.39	4.80
50% = 2.472,	25% = 2.472;		CHTN/A=1.86 WGN=1.63					
UNK-A (330)	GL		SIMIUTAQ	2.74	1.564	2856.20S	2851.39	4.80
50% = 2.338,	25% = 2.338;		CHTN/A=1.74 WGN=1.56					
UNK-A (335)	GL		SIMIUTAQ	2.62	1.499	2856.21S	2851.39	4.81
50% = 2.22,	25% = 2.22;		CHTN/A=1.64 WGN=1.50					
UNK-A (340)	GL		SIMIUTAQ	2.52	1.438	2856.21S	2851.39	4.81
50% = 2.132,	25% = 2.132;		CHTN/A=1.57 WGN=1.44					
UNK-A (345)	GL		SIMIUTAQ	2.43	1.386	2856.22S	2851.39	4.82
50% = 2.053,	25% = 2.053;		CHTN/A=1.51 WGN=1.39					