

Table 1

**K267BH Minor Change to Licensed Facility October 7, 2009  
Channel Study**

Chan	Class	Call Letters	Type	Status	City	State	Country	Owner	Distance (km)	Bearing TO (deg)	Req. Dist. (km)	Clearance (km)
213	C	KSOS	FM	LIC	LAS VEGAS	NV	US	FAITH COMMUNICATIONS CORPORA	61.7	124.0	29.0	32.7
265	D	NEW	FX	APP	MOAPA	NV	US	CALVARY CHAPEL OF TWIN FALLS, II	54.2	106.6	17.9	36.3
265	D	NEW	FX	APP	HENDERSON	SC	US	EDUCATIONAL MEDIA FOUNDATION	61.7	124.0	17.3	44.4
265	D	NEW	FX	APP	SOUTH LAS VEGAS	NV	US	BROADCAST TOWERS, INC.	61.7	124.0	17.3	44.4
266	C	KPKK	FM	APP	AMARGOSA VALLEY	NV	US	SKY MEDIA, L.L.C.	47.2	319.2	114.8	-67.5 (see note)
266	D	NEW	FX	APP	BOULDER CITY	NV	US	ADVANCE MINISTRIES, INC. D/B/A NE	73.2	119.2	41.3	31.9
266	C1	KPKK	FM	LIC	AMARGOSA VALLEY	NV	US	SKY MEDIA, L.L.C.	81.9	296.3	39.8	42.1
267	D	K267BH	FX	LIC	NORTH LAS VEGAS	NV	US	ONDAS DE VIDA NETWORK, INC.	14.1	100.6	70.6	-56.5 (same as applicant)
268	D	NEW	FX	APP	HENDERSON	NV	US	LOTUS BROADCASTING CORP.	61.7	124.0	57.4	4.3
268	D	NEW	FX	APP	LAS VEGAS	NV	US	SOUTHERN NEVADA EDUCATIONAL I	73.4	119.1	41.5	31.9
268	B	KIXF	FM	LIC	BAKER	CA	US	KHWY, INC.	103.1	197.9	69.9	33.2
270	C	KWID	FM	LIC	LAS VEGAS	NV	US	TEXAS LOTUS CORP.	61.7	123.9	83.9	-22.2 (see figure 2)
270	C	KWID	FM	CP	LAS VEGAS	NV	US	TEXAS LOTUS CORP.	61.7	124.0	88.6	-26.9 (see figure 2)

Note: The current licensed facility for K267BH is short-spaced to the recent KPKK application. Therefore, this proposal does not increase interference to any existing facility.

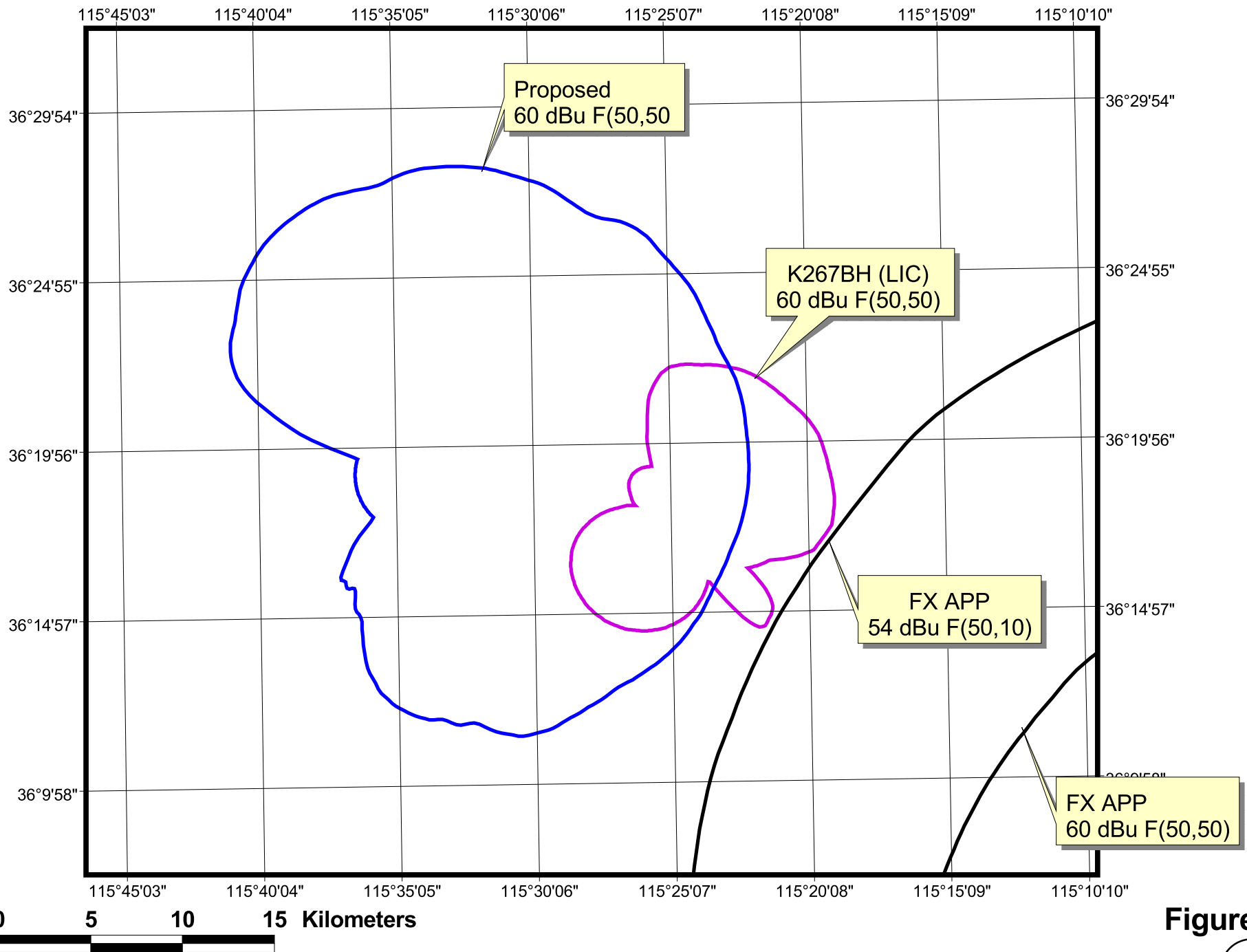
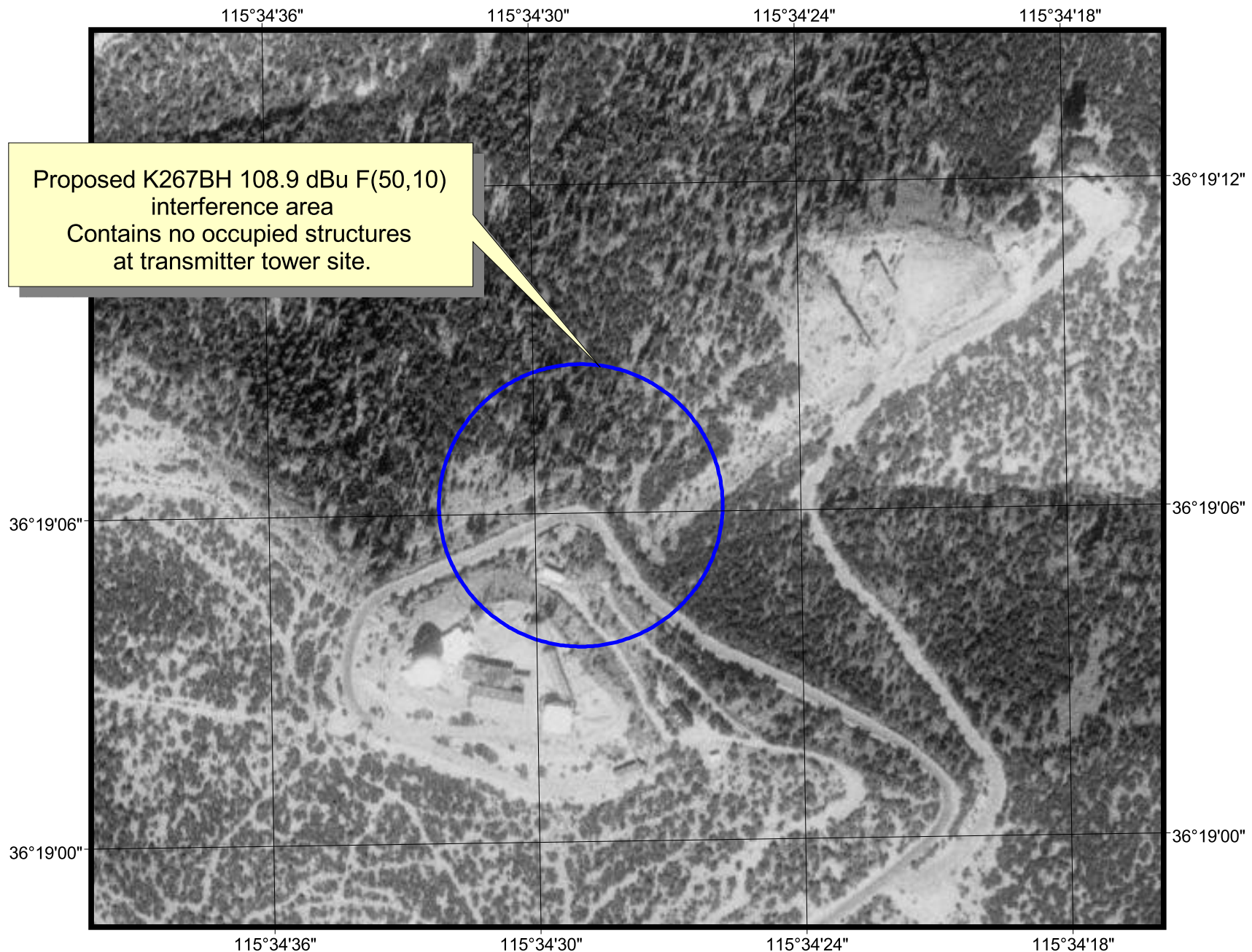


Figure 1

**K267BH, NORTH LAS VEGAS, NV : MINOR CHANGE TO LICENSED FACILITY**  
Minor change showing, and contour protection



**Figure 2**



**K267BH, NORTH LAS VEGAS, NV : MINOR CHANGE TO LICENSED FACILITY**  
**Proposed 108.9 dBu F(50,10) interference area with respect to KWID**

[www.radiodataservices.com](http://www.radiodataservices.com)

**Table 2.**

## Radiofrequency Electromagnetic Exposure Analysis for K267BH

Source	Height AGL(m)	Antenna type	Bays	Horizontal ERP (kw)	Vertical ERP (kw)	Power Density $\mu\text{W}/\text{cm}^2$ at 2 meters AGL				
						at 10 meters distance	% controlled environment limit (1000 $\mu\text{W}/\text{cm}^2$ )	Max. PD	% uncontrolled environment limit (200 $\mu\text{W}/\text{cm}^2$ )	Distance to maximum PD (m)
<b>K267BH</b>	<b>9</b>	<b>SHI-6812B</b>	<b>1</b>	<b>0.01</b>	<b>0.01</b>	<b>2.7</b>	<b>0.3%</b>	<b>2.9</b>	<b>1.5%</b>	<b>7.3</b>
						2.7	0.3%	2.9	1.5%	7.3

**(proposed)**

The proposed facility is excluded from environmental processing under 47. C.F.R. Section 1.1306 (i.e., The facility will not have a significant environmental impact and complies with the maximum permissible radiofrequency electromagnetic exposure limits for controlled and uncontrolled environments).

Calculations made using FCC FM Model v2.10 Beta