

Report Of Intermodulation Product Findings

**WRRM 98.5 MHz. Cincinnati, OH.
WGRR 103.5 MHz. Cincinnati, OH.**

Project# 33565

July 1, 2015

**Electronics Research Inc.
7777 Gardner Road
Chandler, Indiana 47610
Phone (812) 925-6000 Fax (812) 925- 4030**

**EXHIBIT C
MODIFICATION OF STATION LICENSE
RADIO LICENSE HOLDING SRC, LLC
WRRM (FM) RADIO STATION
CH 253B - 98.5 MHZ - 18.0 KW
CINCINNATI, OHIO
July 2015**

TABLE OF CONTENTS

Report of Findings for Intermodulation Product Measurements

Page 3-4	Introduction
Page 5	Carrier Reference Levels
Page 5	Table of Third order Products Expected
Page 6	Intermodulation Product Measurements
Page 7	Conclusion
Page 8	Affidavit

Exhibits Accompanying This Report

EXHIBIT A	Antenna and Combiner Specification Sheet and Drawing
A-1.....	Drawing Depicting Antenna
A-2.....	ERI Antenna Specification Sheet
A-3.....	Drawing Depicting Combiner Module
A-4.....	ERI Combiner Specification Sheet
A-5.....	Theoretical Vertical Plane Relative Field Antenna Plots
EXHIBIT B -1.....	Intermodulation Product Measurement Equipment Layout
B-2.....	Broadcasting Scheme of the Multiplexed System

REPORT OF FINDINGS
WRRM / WGRR
98.5 MHz. / 103.5 MHz.

Introduction: This report of findings is based on data collected at the WRRM and WGRR broadcast facility located in Cincinnati, Ohio. The report includes measurements offered as proof that the combined operations of WRRM (98.5 MHz.) and WGRR (103.5) transmitters are in compliance with the FCC Rules and Regulations as required by the Code of Federal Regulations (CFR) Title 47 section 73.317 paragraph (b) through (d). In brief, the collection of measurements presented in this report shows that all possible third order inter-modulation (IM) products generated by this duplex system are less than the maximum allowable level as required by section 73.317 (b) through (d). Jeff Taylor of Electronics Research, Inc. located in Chandler, Indiana performed the measurements summarized herein on July 1, 2015.

The following exhibits are provided:

Exhibit A:

- A-1 Drawing Depicting Antenna.
- A-2 SHPX-4AC-SP Antenna Specification Sheet.
- A-3 Drawing Depicting Multiplexed Scheme.
- A-4 Multiplexer Specification Sheet.
- A-5 Theoretical Vertical Plane Relative Field Antenna Plots

Exhibit B:

- B-1 Equipment Employed In Intermodulation Product Measurement.
 - B-2 Broadcasting Scheme of the Multiplexed Systems.
- Table 1. Carrier Reference Levels.
- Table 2. Calculated Third Order Products.
- Table 3. Intermodulation Analysis Measurements.

Exhibits Accompanying Report: Exhibit A provides comprehensive information on both antenna and filters used by these radio stations. Exhibit B illustrates the broadcasting scheme of each station, the layout of the equipment used to isolate and measure potential intermodulation products and forward carrier reference levels. Found within Table 1 are the narrow band carrier frequency measurements that provide relative output signal levels for the IM analysis. Table 2 lists the calculated third order products that can be generated from FM transmitters broadcasting from the multiplexed system. The IM Analysis Measurements, in Table 3, provides detailed information obtained from the product frequency investigation.

The Nature of Intermodulation Products (IM): Intermodulation products result from inadequate transmitter-to-transmitter isolation. Intermodulation products are commonly generated from radio stations operating into multiplexed facilities and congested antenna broadcast sites. The mechanics associated with the phenomenon have been well documented. When two or more transmitters are coupled to each other, new spectral components are produced by the mixing of the station frequencies in the active circuits of each transmitter. The common term used to describe this phenomenon is third order product denoted by the mathematical expression $[2(F_1)-(F_2)]$, where F_1 signifies the frequency of the transmitter that is generating the intermodulation product, and F_2 signifies the frequency causing the interference.

The Multiplexed System: These measurements were taken with both FM stations operating from the combined antenna system. The WRRM and WGRR multiplexed system is fundamentally comprised of antenna, feed line and multiplexer unit. The SHPX-4AC-SP (antenna), combiner units, are products of Electronics Research, Inc., while the feedline are products of Cablewave & Myat. Refer to Exhibit B-1, for an illustration of the Broadcasting Scheme of these stations.

To accomplish the aggregation of two transmitter signals into a common antenna feed and provide transmitter-to-transmitter isolation, a multiplexing scheme consisting of a 963 "TEE" combiner. Specifically, the combiner uses two ERI Model 963-3 modules for each frequency (98.5 MHz. and 103.5 MHz.). An interconnecting "T" is required to complete the combiner which is illustrated in the attached Exhibit A-3. The multiplexer, fully assembled, exhibited transmitter port-to-port isolation in excess of -70 dB. Other performance measurements, such as match, loss, group-delay, etc, revealed that the multiplexer unit was in proper working condition. Refer to Exhibit A-4 for the Combiner Specification Sheet.

The IM Investigation: Directional Couplers were placed at key locations throughout the combiner to monitor and maintain the multiplexer's performance. All couplers furnished with the system are factory calibrated and capable of delivering accurate and repeatable RF measurements. To facilitate the taking of the measurements, the coupler located at the antenna output of the multiplexed system was used. Care was taken in the selection of the measurement location to insure that the measurements would be made far removed from transmitters and any filtering used to reduce broadcast emissions. The coupler selected would normally be used for antenna reflection measurements and thus would provide greater than -31 dB directivity and a forward signal sample of -53 dB.

The IM sampled signal was fed by shielded cable into a Band Pass Filter where all extraneous energy was steeply attenuated. Various attenuation pads were used, when needed, on the band pass filter and/or the FIM71 to ensure an adequate signal level for measurements without overloading the measurement equipment. A Potomac Instruments FIM-71 Field Strength Receiver Serial # 686 was employed to record the level of all signals investigated. To facilitate the selective tuning of the Receiver and Band Pass Filter a Wavetek Model 3000 Serial # 5362199 signal generator was used. A Rhode & Schwarz ZVL3 Spectrum Analyzer Serial # 100396 was used to measure the close in spectral attenuation of each carrier and wide band search for any anomalies that may need further investigation. See attached Exhibit A-2 for an illustration of the measurement equipment.

Prior to recording measurements, all pertinent broadcasting equipment including Transmitters, Multiplexer, Feed Line and Antenna were adjusted to optimal performance. Also, it was confirmed before taking any measurements that both transmitters were operating at maximum power. From the equipment setup described above, the relative output signal level of each stations forward carrier was made. The resulting signal levels of these measurements are listed in Table 1, column labeled "Adjusted Level". This level will be used as the reference level for possible IM products of each carrier and was necessary to confirm that no significant levels of spurious energy, referenced to each carrier, were present from any transmitter operating from the multiplexed system.

Table 1 - Carrier Reference Levels.

Carrier Frequency (MHz)	Pad One (dB)	Full Scale Range (dB)	Measured Level (dBm)	Adjusted Level (dBm)	Notes
98.5	6	-	16.5	109.5	
103.5	6	-	8.9	117.1	

Predictable third-order products due to system harmonics mixed with all on-site interfering frequencies that could be generated from the multiplexed system are calculated and listed in Table 2.

Table 2 - Third order Products.

Interfering Frequencies	Carrier Frequencies	
	98.5	100.3
98.5 MHz.	----	108.5
100.3 MHz.	96.7	106.7
103.5 MHz.	93.5	----

Using the equipment previously described the IM product measurements were recorded and are listed in Table 3. The signal levels referenced to the carriers are calculated and listed in the column labeled "Level Referenced to Carrier". Refer to Exhibit B-2 for a layout of the measurement equipment.

Table 3 – Intermodulation Measurements

IM Measurements Taken in Cincinnati, OH. Aux System											
Product Frequency (MHz)	Transmitter Frequency (MHz)	Interfering Frequency (MHz)	Pad (dB)	Bandpass Filter Loss (dB)	Total Loss	Full Scale Range (dBμ)	Scale Reading (dBμ)	Adjusted Level (dBμ)	Carrier Reference Level (dBμ)	Level Referenced to Carrier (dB)	Notes*
Transmitter Mixes											
	98.5	Ref.	6		6	120	16.5		109.5		
	100.3	Ref.	6		6	120	4.5		121.5		
	103.5	Ref.	6		6	120	8.9		117.1		
93.5	98.5	103.5	6	9.1	15.1	20	20	19.2	109.5	-90.3	
96.7	98.5	100.3	6	9.2	15.2	20	19.9	15.3	109.5	-94.2	
97.1	100.3	103.5	6	9.3	15.3	40	12.5	42.8	121.5	-78.7	WYGY 97.3
102.1	100.3	98.5	6	8.7	14.7	40	13.8	40.9	121.5	-80.6	WKQR 101.9
106.7	103.5	100.3	6	9.3	15.3	20	10.8	24.5	117.1	-92.6	
108.5	103.5	98.5	6	9.1	15.1	20	19.9	15.2	117.1	-101.9	

Local Stations in the Area

WYGY 97.3 Local Carrier No Discernible Signal Detected

WKQR 101.9 Local Carrier No Discernible Signal Detected

The Spectrum Analyzer was used to check the close in spectral attenuation of the carrier to confirm the operation of the transmitter is in compliance with Sections (b) and (c) of the FCC Rules and Regulations.

As a final proof of the systems IM Product performance, a wide band search was undertaken using the Spectrum Analyzer. The purpose for this measurement was to look for suspicious anomalies that may warrant further investigation. My search ranged the complete frequency span of the receiver and resulted in no additional investigations.

Conclusion: Based upon my observations and measurements taken on July 1, 2015 as summarized in this document, I, Jeff Taylor, find the subject system, specifically the transmitter and filter system for the operation of WRRM and WGRR into the antenna to be in proper working order. Furthermore, based on the measured data, it is my opinion that there are no inter-modulation products in excess of 80 dB below carrier levels generated from or within the station operating on the installed system. Based on this recorded data, I conclude that WRRM and WGRR are in compliance with the requirements of Section 73.317 paragraph (b) through (d) of the FCC Rules and Regulations.

Respectfully submitted,
Electronics Research, Inc.

Jeff Taylor, Field Technician

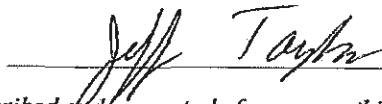
State of Indiana)
) SS:
County of Warrick)

AFFIDAVIT

I, Jeff Taylor, hereby declare that the following statements are true and correct to the best of my knowledge and belief :

- 1.) I am a Field Technician for Electronics Research, Inc ("ERI ") and have been employed by ERI for 18 years. I am familiar with and have assisted in the design, manufacturing and installation of FM Antennas and FM Multiplexers in my long tenure with ERI.
- 2.) I have either prepared and/or directly supervised the preparation of all technical information contained in this Report of Findings and to my knowledge to be accurate and true.
- 3.) ERI has been requested by Cumulus Radio on behalf of radio Stations WRRM and WGRR in Cincinnati, OH. to prepare this Report Of Findings.

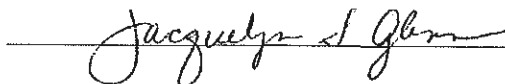
Jeff Taylor; Field Technician



Subscribed and sworn to before me on this 2nd, day of July, 2015.

Jacquelyn Glenn; Notary Public
My commission expires July 5, 2015





EXHIBIT, A-1

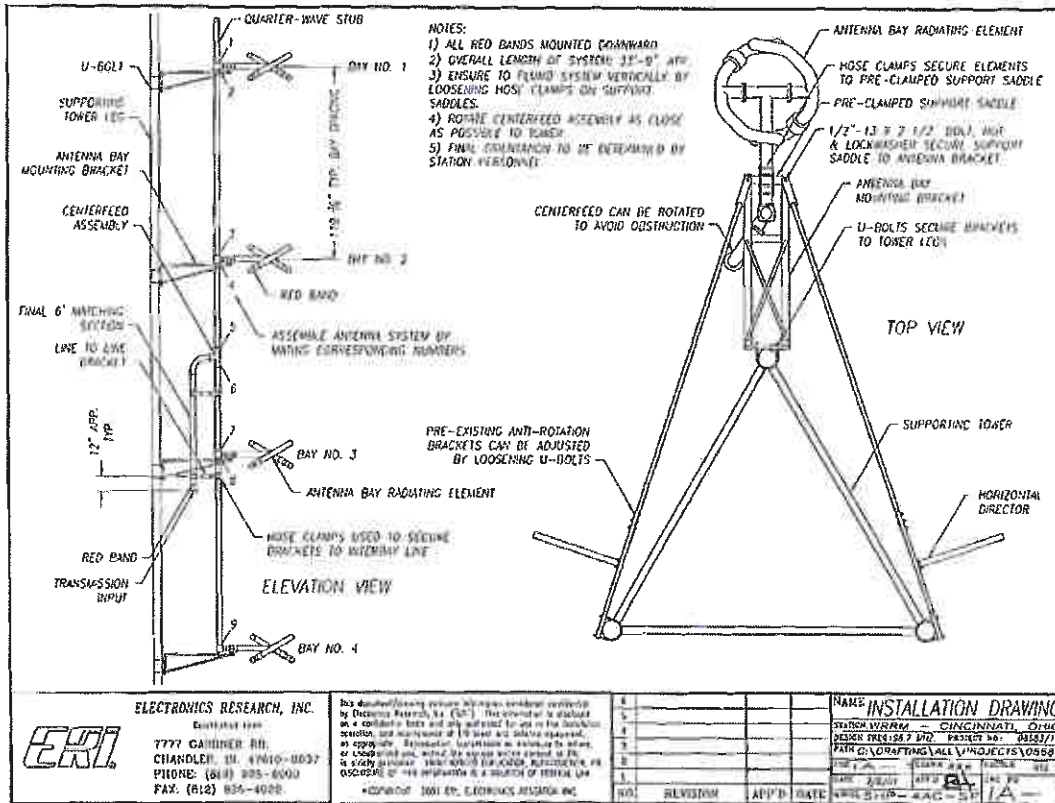


EXHIBIT A-1

A-2 ERI Antenna Specification Sheet**MULTIPLEXED TRANSMISSION SITE****Cincinnati, Ohio****General Specifications**

Antenna Type High Power FM-Broadcast, Suitable For Multiplexing
 Model Number SHPX-4AC-SP
 Number of Bay Levels Four
 Polarization Left Hand Circular

Electrical Specifications

Antenna Input Power Capability 13 kW Max ⁽¹⁾
 Operating Frequency Band 98.5 ~ 103.5 Megahertz.
 VSWR <1.07:1 @ Operating Frequencies ⁽²⁾
 Azimuthal Pattern Circularity Better Than +/- 1dB From RMS (Free Space)
 Power Split 50/50 (Horizontal & Vertical)
 Frequency Specific Information:

<u>Frequency</u>	<u>Station ERP</u>	<u>Beam Tilt</u>	<u>First Null Fill</u>	<u>Second Null Fill</u>	<u>Power Gain</u>	<u>Line Loss</u> ⁽³⁾	<u>Filter Loss</u> ⁽⁴⁾	<u>Computed TPO</u>
98.5	18 KW	-1.0°	10.0 %	0.0 %	2.061	-0.940 dB	-.194 dB	11.504 kW
103.5	3.0 KW	-1.1°	22.0 %	1.2 %	1.949	-0.963 dB	-.158 dB	2.025 kW

Mechanical Specifications

Antenna Feed System Fed with One 3 1/8" Line
 Input Connector 3 1/8"-50 Ohm EIA Flanged
 Element Deicing Heaters
 Interbay Spacing 119.39" Center to Center
 Array Length 32.5 Feet
 Construction Material (Antenna) Galvanized Plated Steel and Stainless Steel
 Construction Material (Mounting) Leg Mount

1) Power Capability Has Been Rated Assuming an Operating Transmission VSWR of 1.5:1

2) VSWR Specification Achieved After On Site Tuning For User Specific Frequencies.

3) Line Loss Assumes A Feed Run of 666 Feet of HCC-300-50J Flex and 177 Feet of Myat 3 1/8" Rigid, Section Lengths 20'.

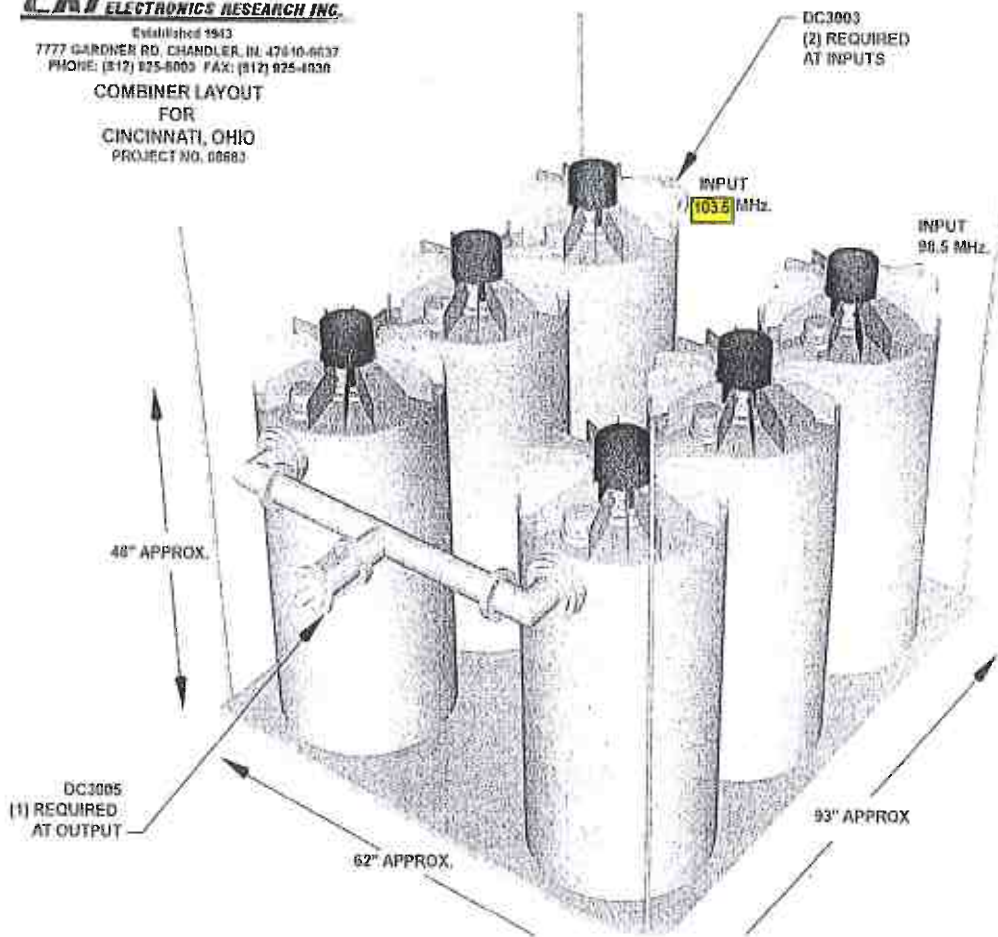
4) Losses Taken From Actual Combiner.

EXHIBIT A-3

CRI ELECTRONICS RESEARCH INC.

Established 1943
7777 GARDNER RD. CHANDLER, IN. 47510-6637
PHONE: (317) 925-8000 FAX: (317) 925-4030

COMBINER LAYOUT
FOR
CINCINNATI, OHIO
PROJECT NO. 00883



A-4 ERI Combiner Specification Sheet**MULTIPLEXED TRANSMISSION SITE****Cincinnati, Ohio****General Specifications:**

Multiplexer Type "TEE" Combiner
Number of Combining Units Two
Injected Port to Injected Port Isolation < -70 dB
Output Connector 3 1/8 "50 Ohm EIA (Flanged)
Output Power (Designed) 13 kW⁽¹⁾

Heat Removal Natural Convection
Physical Arrangement All Components Platform Mounted

Injected Port Specifications:

Frequency Assignment 98.5 ~ 103.5 MHz.
Power Rating, Each Injected Port (Designed).... 11.5 kW for 98.5 MHz. & 2.025 kW for 103.5 MHz.
Input Connector 3-1/8" 50 Ohm EIA (Flanged).
VSWR..... < 1.05:1 @ +/-150 KHz.⁽²⁾
Group Delay Less than 75 ns Overall Variation, Carrier @ +/- 150 KHz.
Insertion Loss (Measured):

98.5 MHz. - 0.194 dB

103.5 MHz. - 0.158 dB

1) Power Rating Listed is as Designed Only. Actual Power Capabilities May Vary.

2) When Terminated in 50 Ohm Resistive Load.

EXHIBIT A - 5

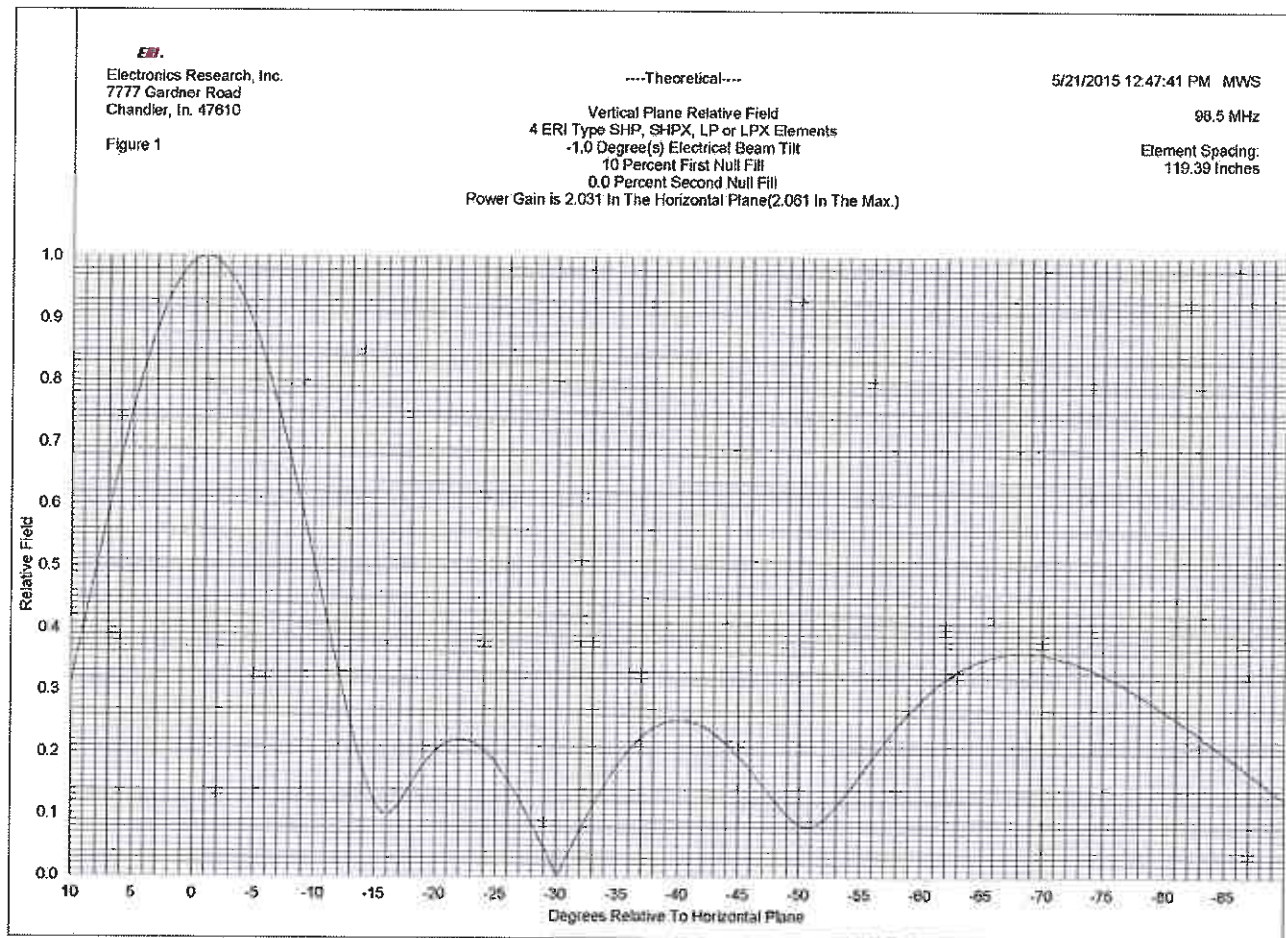
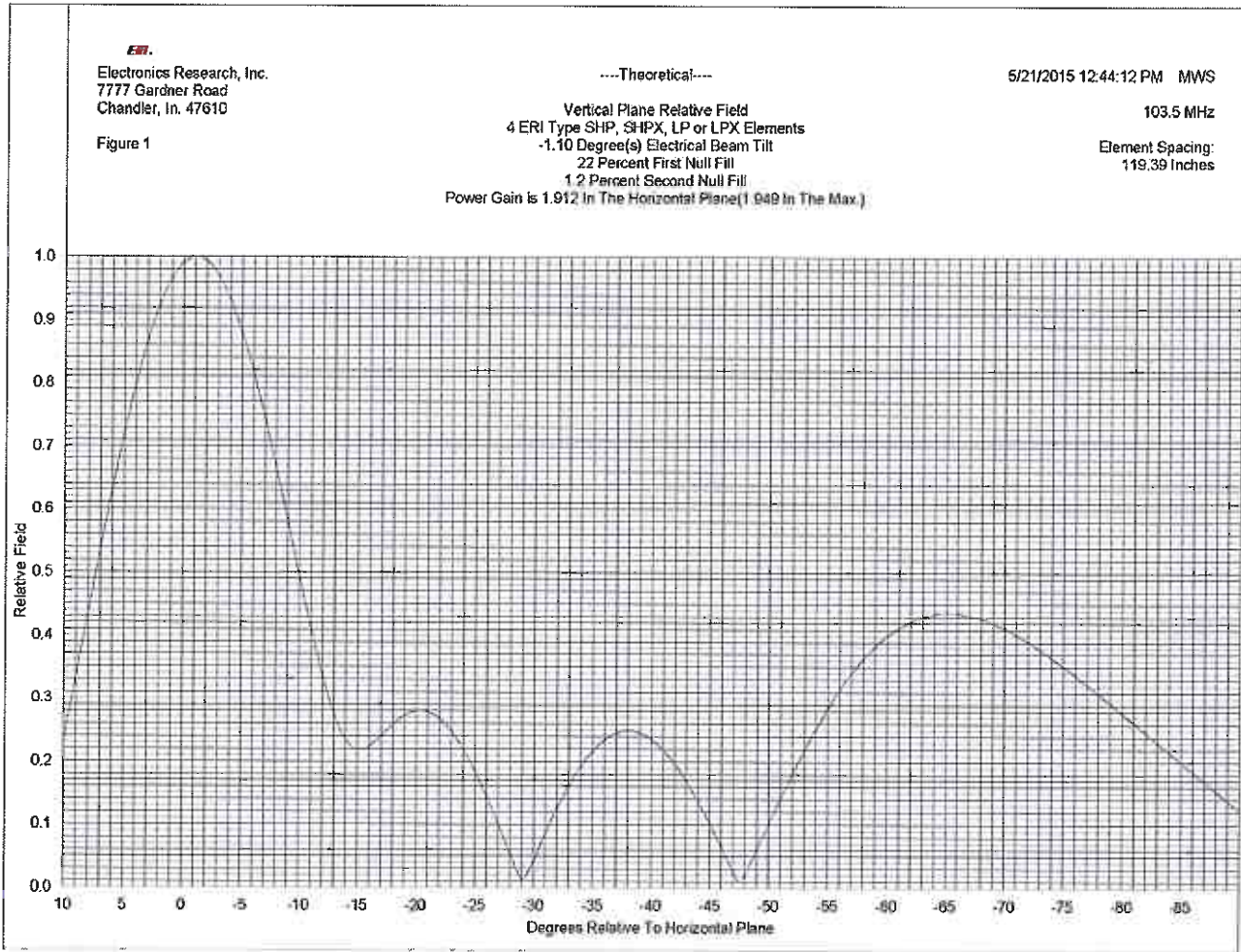


EXHIBIT A – 5



Broadcasting Scheme and Equipment Employed in Intermodulation Measurements

EXHIBIT B

