

ENGINEERING STATEMENT
IN SUPPORT OF A MODIFICATION OF
CONSTRUCTION PERMIT
FOR MINOR CHANGE
FOR THE DIGITAL LPTV OPERATION OF
WLEP-LD, ERIE, PENNSYLVANIA

AUGUST 2009

This engineering statement has been prepared on behalf of Hapa Media Properties, LLC, (“Hapa”), permittee of low power TV station WLEP-LD, Erie, Pennsylvania, in support of an application to modify construction permit (BDCCTL-20061024AER) to make minor changes in the station’s digital low power TV facilities.

At present WLEP-LP, Facility ID Number 130837, is licensed (BLTVL-20090417AJA) to operate its low power TV facility on Channel 9 (186-192 MHz) with 0.1 kW effective radiated power (ERP), 521 meters antenna height above mean sea level and a directional TV antenna. Hapa also holds a construction permit for a digital companion channel for WLEP-LD (Facility ID No. 168177) on Channel 43 (644-650 MHz) with 15 maximum ERP and 387.4 antenna height above mean sea level using a directional antenna. It is proposed to relocate the WLEP-LD antenna site to the analog TV site. The proposed WLEP-LD operation would be on Channel 43 with 12 kW maximum ERP, 521 meters antenna height above mean sea level and a directional TV antenna. The attached map (Figure 1) indicates the proposed WLEP-LD 51 dBu contour would overlap with the 68 dBu contour of the licensed WLEP-LP operation. Therefore, the proposed operation is a minor change in the digital low power TV facilities of WLEP-LD. Also, attached map, Figure 2, shows the proposed WLEP-LD 19 dBu contour would not extend beyond the authorized 19 dBu contour in pertinent directions towards Canada. Therefore, it is believed a Canadian concurrence for the proposed WLEP-LD operation is not required.

The following information provides pertinent data for the proposed WLEP-LD operation.

Name of the Licensee:	Hapa Media Properties, LLC			
Station Location:	PA-Erie			
Channel:	43			
Hours of Operation:	Unlimited			
Antenna Type:	PSI, Model PSILP8-AM, Directional			
Antenna Coordinates:	North Latitude:	42 deg	02 min	21 sec
	West Longitude:	80 deg	03 min	39 sec
Maximum effective radiated power (Average):	12 kW 10.79 dBk			
Transmitter Output Power:	1.22 kW			
Elevation of the site above mean sea level:	402.3 meters			
Overall height of the tower above ground:	158.5 meters			
Height of radiation center above ground (meters):	119 meters			
Height of radiation center above mean sea level (meters):	521 meters			
Antenna Structure Registration Number:	1026640			

An interference study conducted (see attached Table I) according to the FCC OET Bulletin 69 indicates the WLEP-LD operation on Channel 43 from the proposed site would not cause any interference to other TV, DTV or LPTV stations exceeding the Commission's guidelines.

The attached environmental statement demonstrates that there will not be any significant environmental impact from the proposed LPTV operation in accordance with 47 C.F.R. Section 73.1307.

The proposed WLEP-LD facility complies with Section 73.1030 of the Commission's rules; therefore, notification to radio astronomy installations, radio receiving installations and FCC monitoring stations is not required.

WLEP-LD would be operating from an existing tower which is registered (ASR No. 1026640) by the Commission and no changes are proposed to require a modification in the registration.

TABLE I

Census data selected: 2000

Post DTV Transition Database Selected

TV INTERFERENCE and SPACING ANALYSIS PROGRAM

Date: 08-04-2009 Time: 15:40:31

Record Selected for Analysis

WLEP-LD USERRECORD-01 ERIE PA US
 Channel 43 ERP 12. kW HAAT 184. m RCAMSL 00521 m STRINGENT MASK
 Latitude 042-02-21 Longitude 0080-03-39
 Status APP Zone 1 Border
 Dir Antenna Make usr Model PSI-AM Beam tilt N Ref Azimuth 10.
 Last update Cutoff date Docket
 Comments
 Applicant

Cell Size for Service Analysis 1.0 km/side

Distance Increments for Longley-Rice Analysis 1.00 km

Not full service station

Facility meets maximum power limit

Azimuth (Deg)	ERP (kW)	HAAT (m)	51.0 dBu F(50,90) (km)
0.0	11.737	294.9	53.8
45.0	9.240	160.3	45.0
90.0	4.495	106.3	37.3
135.0	0.992	120.5	30.9
180.0	1.124	95.4	29.1
225.0	0.514	151.1	29.5
270.0	2.869	242.5	43.6
315.0	6.822	300.0	51.2

Contour Overlap to Proposed Station

Contour Overlap Evaluation to Proposed Station Complete

Proposed facility OK to FCC Monitoring Stations

Proposed facility OK toward West Virginia quiet zone

Proposed facility OK toward Table Mountain

Proposed facility is within the Canadian coordination distance
 Distance to border = 39.4km

Proposed facility is beyond the Mexican coordination distance

Proposed station is 2.46km from AM station
 ERIE PA WRIE Status: L Antenna: DA2

Start of Interference Analysis

Channel	Proposed Station Call City/State	ARN
---------	-------------------------------------	-----

KHANNA & GUILL, Inc. – Consulting Engineers

43 WLEP-LD ERIE PA USERRECORD01

Stations Potentially Affected by Proposed Station

Chan	Call	City/State	Dist(km)	Status	Application	Ref. No.
28	WDTB-LP	BUFFALO NY	134.8	CP	BDISTTL	-20080903AAP
28	WDTB-LP	BUFFALO NY	134.8	CP	BPTTL	-20041222AAC
29	NEW	ERIE PA	10.2	APP	BNPTTL	-20000830BNN
29	W29CO	SHARON PA	94.2	LIC	BLTTL	-20031216ACI
39	WDTB-LP	HAMBURG NY	135.9	LIC	BLTTL	-19930721IE
40	WDTB-LP	BUFFALO NY	134.8	STA	BSTA	-20021007ACT
42	WPMY	PITTSBURGH PA	171.7	LIC	BLCDDT	-20060608AAB
43	W43BP	CRESAPTOWN MD	290.2	LIC	BLTT	-19981124JI
43	WTVS	DETROIT MI	260.1	LIC	BLEDT	-20001117ABV
43	WTVS	DETROIT MI	260.1	CP	BPEDT	-20080620AAL
43	WNED-TV	BUFFALO NY	144.4	LIC	BLEDT	-20030812AAJ
43	W43BZ	COLUMBUS OH	338.7	LIC	BLTTL	-20031121AAO
43	W47AB	MANSFIELD OH	250.5	APP	BDISDTT	-20090716ABH
43	W43CO-D	KINGSTON PA	355.6	CP	BDCDDTL	-20061030AGG
43	WPGH-TV	PITTSBURGH PA	171.7	CP MOD	BMPCDDT	-20021216AAS
43	WPGH-TV	PITTSBURGH PA	171.7	LIC	BLCDDT	-20021216AAT
43	W43CL	PENDLETON WV	367.2	CP	BNPTTL	-20000828AED
44	WXOX-LP	CLEVELAND OH	153.9	APP	BDFCDTL	-20080221ACU
44	WXOX-LP	CLEVELAND OH	153.9	APP	BPTTL	-20050927ALC
44	WXOX-LP	CLEVELAND OH	153.9	CP	BDISTTL	-20060207AAO
44	W58AM	YOUNGSTOWN OH	117.0	CP	BDISDTT	-20060331ARW
44	W52BO	MEADVILLE PA	46.7	APP	BPTT	-20010223AAZ
45	W45BT	BROOKVILLE PA	129.0	LIC	BLTTL	-20020507AAB
45	NEW	ERIE PA	11.2	APP	BNPTTL	-20000830BDH
51	W51BI	KIRTLAND OH	120.6	LIC	BLTT	-19941013JD
51	W51EC	ERIE PA	10.2	CP	BNPTTL	-20000830BNF

[illegible]

Analysis of Interference to Affected Station 1

Analysis of current record

Channel	Call	City/State	Application	Ref. No.
28	WDTB-LP	BUFFALO NY	BDISTTL	-20080903AAP

Stations Potentially Affecting This Station

Chan	Call	City/State	Dist(km)	Status	Application	Ref. No.
24	WJET-TV	ERIE PA	135.2	CP MOD	BMPCDT	-20080612ABV
24	WJET-TV	ERIE PA	135.2	PLN	DTVPLN	-DTVP0896
26	WNYB	JAMESTOWN NY	61.3	APP	BMPCDT	-20080619AFD
26	WNYB	JAMESTOWN NY	61.3	PLN	DTVPLN	-DTVP0963
26	WNYB	JAMESTOWN NY	61.3	CP	BPCDT	-20080313ACK
27	NEW	ITHACA NY	192.3	APP	BSFDDT	-20060630DCG
28	WFUM	FLINT MI	373.3	APP	BMPEdT	-20080617ABY
28	WFUM	FLINT MI	373.3	PLN	DTVPLN	-DTVP1037
28	WFUM	FLINT MI	373.3	CP	BPEDT	-20080312ADF
28	W21BW	ELMIRA NY	195.8	CP	BDISDTL	-20090224AAQ
28	WUHF	ROCHESTER NY	108.7	LIC	BLCDT	-20050316AAK
28	WUHF	ROCHESTER NY	108.7	PLN	DTVPLN	-DTVP1044
28	W28DE-D	SCHOHARIE, ETC. NY	371.7	CP	BDCCDDT	-20061027ACP
28	WUAB	LORAIN OH	287.7	LIC	BLCDT	-20020516AAG
28	WUAB	LORAIN OH	287.7	PLN	DTVPLN	-DTVP1045
28	W61AG	POTTSTOWN PA	330.5	APP	BDISDDT	-20090515ACO
28	WBRE-TV	WAYMART PA	315.9	APP	BDRTCDT	-20090608ACH
32	WNLO	BUFFALO NY	17.1	LIC	BLCDT	-20070320AAV
32	WNLO	BUFFALO NY	17.1	PLN	DTVPLN	-DTVP1190
43	WNED-TV	BUFFALO NY	17.1	LIC	BLEDT	-20030812AAJ
43	WNED-TV	BUFFALO NY	17.1	PLN	DTVPLN	-DTVP1548
43	WLEP-LD	ERIE PA	127.4	CP	BDCCDDTL	-20061024AER
43	WLEP-LD	ERIE PA	134.8	APP	USERRECORD-01	

Proposed station is beyond the site to nearest cell evaluation distance

#####

Analysis of Interference to Affected Station 2

Analysis of current record

Channel	Call	City/State	Application Ref. No.
28	WDTB-LP	BUFFALO NY	BPTTL -20041222AAC

Stations Potentially Affecting This Station

Chan	Call	City/State	Dist(km)	Status	Application Ref. No.
24	WJET-TV	ERIE PA	135.2	CP MOD	BMPCDT -20080612ABV
24	WJET-TV	ERIE PA	135.2	PLN	DTVPLN -DTVP0896
26	WNYB	JAMESTOWN NY	61.3	APP	BMPCDT -20080619AFD
26	WNYB	JAMESTOWN NY	61.3	PLN	DTVPLN -DTVP0963
26	WNYB	JAMESTOWN NY	61.3	CP	BPCDT -20080313ACK
27	NEW	ITHACA NY	192.3	APP	BSFDTT -20060630DCG
28	WFUM	FLINT MI	373.3	APP	BMPEDT -20080617ABY
28	WFUM	FLINT MI	373.3	PLN	DTVPLN -DTVP1037
28	WFUM	FLINT MI	373.3	CP	BPEDT -20080312ADF
28	W21BW	ELMIRA NY	195.8	CP	BDISDTL -20090224AAQ
28	WUHF	ROCHESTER NY	108.7	LIC	BLCDT -20050316AAK
28	WUHF	ROCHESTER NY	108.7	PLN	DTVPLN -DTVP1044
28	W28DE-D	SCHOHARIE, ETC. NY	371.7	CP	BDCCDTT -20061027ACP
28	WUAB	LORAIN OH	287.7	LIC	BLCDT -20020516AAG
28	WUAB	LORAIN OH	287.7	PLN	DTVPLN -DTVP1045
28	W61AG	POTTSTOWN PA	330.5	APP	BDISDTT -20090515ACO
28	WBRE-TV	WAYMART PA	315.9	APP	BDRTCDT -20090608ACH
32	WNLO	BUFFALO NY	17.1	LIC	BLCDT -20070320AAV
32	WNLO	BUFFALO NY	17.1	PLN	DTVPLN -DTVP1190
43	WNED-TV	BUFFALO NY	17.1	LIC	BLEDT -20030812AAJ
43	WNED-TV	BUFFALO NY	17.1	PLN	DTVPLN -DTVP1548
43	WLEP-LD	ERIE PA	127.4	CP	BDCCDTL -20061024AER
43	WLEP-LD	ERIE PA	134.8	APP	USERRECORD-01

Proposed station is beyond the site to
nearest cell evaluation distance

#####

Analysis of Interference to Affected Station 3

Analysis of current record

Channel	Call	City/State	Application Ref. No.
29	NEW	ERIE PA	BNPTTL -20000830BNN

Stations Potentially Affecting This Station

Chan	Call	City/State	Dist(km)	Status	Application Ref. No.
22	WFXP	ERIE PA	10.7	CP MOD	BMPCDT -20070404ACJ
22	WFXP	ERIE PA	10.4	PLN	DTVPLN -DTVP0818
26	WNYB	JAMESTOWN NY	68.9	APP	BMPCDT -20080619AFD
26	WNYB	JAMESTOWN NY	68.9	PLN	DTVPLN -DTVP0963
26	WNYB	JAMESTOWN NY	68.9	CP	BPCDT -20080313ACK
29	WIVN-LP	NEWCOMERSTOWN OH	231.0	CP	BDFCDTL -20090629ADK
29	WGTE-TV	TOLEDO OH	291.9	LIC	BLEDT -20031110AKO
29	WGTE-TV	TOLEDO OH	291.9	PLN	DTVPLN -DTVP1082
29	WIIC-LP	PITTSBURGH PA	181.6	APP	BDFCDTL -20090302ABG
29	W29CO	SHARON PA	101.7	LIC	BLTTL -20031216ACI
29	WQMY	WILLIAMSPORT PA	254.6	CP MOD	BMPCDT -20081113AEW
29	WQMY	WILLIAMSPORT PA	254.1	PLN	DTVPLN -DTVP1086
30	NEW	ERIE PA	1.1	APP	BNPTTL -20000831ELC
32	WNLO	BUFFALO NY	135.1	LIC	BLCDT -20070320AAV
32	WNLO	BUFFALO NY	135.1	PLN	DTVPLN -DTVP1190
33	WGRZ	BUFFALO NY	134.2	LIC	BLCDT -20050705AAG
33	WGRZ-TV	BUFFALO NY	134.2	PLN	DTVPLN -DTVP1223

KHANNA & GULL, Inc. – Consulting Engineers

36	WYTV	YOUNGSTOWN OH	126.6	CP	BPCDT	-20080620ALJ
36	WYTV	YOUNGSTOWN OH	126.6	PLN	DTVPLN	-DTVP1342
36	WYTV	YOUNGSTOWN OH	126.6	LIC	BLCDT	-20060711AAV
43	WNED-TV	BUFFALO NY	135.1	LIC	BLEDT	-20030812AAJ
43	WNED-TV	BUFFALO NY	135.1	PLN	DTVPLN	-DTVP1548
44	W58AM	YOUNGSTOWN OH	125.0	CP	BDISDTT	-20060331ARW
43	WLEP-LD	ERIE PA	10.2	APP	USERRECORD-01	

Proposal causes no interference

#####

Analysis of Interference to Affected Station 4

Analysis of current record

Channel	Call	City/State	Application Ref. No.
29	W29CO	SHARON PA	BLTTL -20031216ACI

Stations Potentially Affecting This Station

Chan	Call	City/State	Dist(km)	Status	Application Ref. No.
22	WFXP	ERIE PA	94.1	CP MOD	BMPCDT -20070404ACJ
22	WFXP	ERIE PA	94.4	PLN	DTVPLN -DTVP0818
25	KDKA-TV	PITTSBURGH PA	89.7	LIC	BLCDT -20041004ACS
25	KDKA-TV	PITTSBURGH PA	89.7	PLN	DTVPLN -DTVP0929
26	WVIZ	CLEVELAND OH	106.4	CP MOD	BMPEDT -20080620AAF
26	WVIZ	CLEVELAND OH	110.0	PLN	DTVPLN -DTVP0964
26	WQEX	PITTSBURGH PA	96.4	LIC	BLCDT -20040831ABW
28	WUAB	LORAIN OH	108.8	LIC	BLCDT -20020516AAG
28	WUAB	LORAIN OH	108.8	PLN	DTVPLN -DTVP1045
29	WMPB	BALTIMORE MD	367.7	LIC	BLEDT -20031029ACG
29	WMPB	BALTIMORE MD	367.8	PLN	DTVPLN -DTVP1068
29	WMPB	BALTIMORE MD	367.7	CP	BPEDT -20080620AHW
29	WAOH-LP	AKRON OH	78.7	LIC	BLTTL -19900430KA
29	WIVN-LP	NEWCOMERSTOWN OH	132.9	CP	BDFCDTL -20090629ADK
29	WGTE-TV	TOLEDO OH	254.3	LIC	BLEDT -20031110AKO
29	WGTE-TV	TOLEDO OH	254.4	PLN	DTVPLN -DTVP1082
29	NEW	ERIE PA	101.7	APP	BNPTTL -20000830BNN
29	WIIC-LP	PITTSBURGH PA	96.4	LIC	BLTTL -19981230JB
29	WIIC-LP	PITTSBURGH PA	96.4	APP	BDFCDTL -20090302ABG
29	WQMY	WILLIAMSPORT PA	276.8	CP MOD	BMPCDT -20081113AEW
29	WQMY	WILLIAMSPORT PA	276.2	PLN	DTVPLN -DTVP1086
29	W29DI-D	BRIDGEWATER, ET. AL VA	354.6	CP	BDCCDTT -20061030AOP
30	WBNX-TV	AKRON OH	106.8	LIC	BLCDT -20070430AXX
30	WBNX-TV	AKRON OH	106.8	PLN	DTVPLN -DTVP1111
30	WBNX-TV	AKRON OH	106.8	CP	BPCDT -20080619AFL
30	WWKH-CA	UNIONTOWN PA	167.0	APP	BDISDTA -20090713ADM
30	W30CO-D	WHEELING WV	133.6	CP	BDCCDTT -20061025ADQ
36	WYTV	YOUNGSTOWN OH	26.0	CP	BPCDT -20080620ALJ
36	WYTV	YOUNGSTOWN OH	26.0	PLN	DTVPLN -DTVP1342
36	WYTV	YOUNGSTOWN OH	26.0	LIC	BLCDT -20060711AAV
43	WPGH-TV	PITTSBURGH PA	90.0	CP MOD	BMPCDT -20021216AAS
43	WPGH-TV	PITTSBURGH PA	90.0	PLN	DTVPLN -DTVP1552
43	WPGH-TV	PITTSBURGH PA	90.0	LIC	BLCDT -20021216AAT
44	WXOX-LP	CLEVELAND OH	106.8	APP	BDFCDTL -20080221ACU
44	W58AM	YOUNGSTOWN OH	24.8	CP	BDISDTT -20060331ARW
43	WLEP-LD	ERIE PA	94.2	APP	USERRECORD-01

Proposed station is beyond the site to
nearest cell evaluation distance

#####

Analysis of Interference to Affected Station 5

Analysis of current record

Channel	Call	City/State	Application Ref. No.
39	WDTB-LP	HAMBURG NY	BLTTL -19930721IE

Stations Potentially Affecting This Station

Chan	Call	City/State	Dist(km)	Status	Application	Ref. No.
32	WNLO	BUFFALO NY	24.3	LIC	BLCDT	-20070320AAV
32	WNLO	BUFFALO NY	24.3	PLN	DTVPLN	-DTVP1190
38	WKBW-TV	BUFFALO NY	25.9	LIC	BLCDT	-20051215AAG
38	WKBW-TV	BUFFALO NY	25.9	PLN	DTVPLN	-DTVP1374
38	W48CH	ERIE PA	136.1	CP	BDISDTT	-20060330AFA
39	W43BP	CRESAPTOWN MD	361.2	CP	BDISDTT	-20060330ALB
39	WJAL	HAGERSTOWN MD	334.1	CP	BPCDT	-20090730ACS
39	WJAL	HAGERSTOWN MD	333.9	PLN	DTVPLN	-DTVP1406
39	WADL	MOUNT CLEMENS MI	335.4	LIC	BLCDT	-20020507AAO
39	WADL	MOUNT CLEMENS MI	335.4	PLN	DTVPLN	-DTVP1407
39	WIVB-TV	BUFFALO NY	23.7	LIC	BLCDT	-20020619ABE
39	WIVB-TV	BUFFALO NY	23.7	PLN	DTVPLN	-DTVP1409
39	WJKP-LP	CORNING NY	160.5	LIC	BLTTL	-20060109ACB
39	WTKO-LD	ONEIDA NY	256.0	CP	BDCCDTL	-20061030ACN
39	WIVM-LP	CANTON OH	293.2	APP	BDISDTL	-20090731AGF
39	WLVT-TV	ALLENTOWN PA	375.6	CP MOD	BMPEDT	-20080618AAL
39	WLVT-TV	ALLENTOWN PA	375.8	PLN	DTVPLN	-DTVP1410
39	W63AU	PITTSBURGH PA	283.0	APP	BDISDTL	-20090302AEI
39	W39BE	STATE COLLEGE PA	246.6	CP	BDFCDTT	-20060331BIU
39	W39BT	WILLIAMSPORT PA	227.8	CP	BDFCDTT	-20060331ANI
40	WDTB-LP	BUFFALO NY	8.4	STA	BSTA	-20021007ACT
40	W40BS	RENOVO PA	190.5	CP	BDFCDTT	-20060331BJJ
43	WNED-TV	BUFFALO NY	24.3	LIC	BLEDT	-20030812AAJ
43	WNED-TV	BUFFALO NY	24.3	PLN	DTVPLN	-DTVP1548
43	WLEP-LD	ERIE PA	135.9	APP	USERRECORD-01	

Proposed station is beyond the site to
nearest cell evaluation distance

#####

Analysis of Interference to Affected Station 6

Analysis of current record

Channel	Call	City/State	Application	Ref. No.
40	WDTB-LP	BUFFALO NY	BSTA	-20021007ACT

Stations Potentially Affecting This Station

Chan	Call	City/State	Dist(km)	Status	Application	Ref. No.
32	WNLO	BUFFALO NY	17.1	LIC	BLCDT	-20070320AAV
32	WNLO	BUFFALO NY	17.1	PLN	DTVPLN	-DTVP1190
33	WGRZ	BUFFALO NY	31.2	LIC	BLCDT	-20050705AAG
33	WGRZ-TV	BUFFALO NY	31.2	PLN	DTVPLN	-DTVP1223
38	WKBW-TV	BUFFALO NY	34.1	LIC	BLCDT	-20051215AAG
38	WKBW-TV	BUFFALO NY	34.1	PLN	DTVPLN	-DTVP1374
39	WIVB-TV	BUFFALO NY	31.9	LIC	BLCDT	-20020619ABE
39	WIVB-TV	BUFFALO NY	31.9	PLN	DTVPLN	-DTVP1409
39	WDTB-LP	HAMBURG NY	8.4	LIC	BLTTL	-19930721IE
40	NEW	DETROIT MI	346.4	APP	BDCCDTL	-20061027ACH
40	WIXT-CA	DEWITT NY	226.8	CP	BDFCDTA	-20081117AAD
40	WCWF	SARANAC LAKE NY	382.1	PLN	DTVPLN	-DTVP1445
40	WNMN	SARANAC LAKE NY	382.1	CP	BPCDT	-20080619ALG
40	WRAP-CD	CLEVELAND OH	278.1	CP	BDCCDTL	-20061030AGC
40	WMVH-CA	CHARLEROI PA	317.9	APP	BDISDTA	-20090713ADO
40	KDKA-TV	JOHNSTOWN PA	300.7	APP	BDRTCDT	-20090630ADW
40	W40BS	RENOVO PA	198.3	CP	BDFCDTT	-20060331BJJ
40	W60AH	STROUDSBURG PA	371.3	CP	BDISDTT	-20060403ADD
43	WNED-TV	BUFFALO NY	17.1	LIC	BLEDT	-20030812AAJ
43	WNED-TV	BUFFALO NY	17.1	PLN	DTVPLN	-DTVP1548
43	WLEP-LD	ERIE PA	134.8	APP	USERRECORD-01	

Proposed station is beyond the site to
nearest cell evaluation distance

#####

Analysis of Interference to Affected Station 7

Analysis of current record

Channel	Call	City/State	Application Ref. No.
42	WPMY	PITTSBURGH PA	BLCDT -20060608AAB

Stations Potentially Affecting This Station

Chan	Call	City/State	Dist(km)	Status	Application Ref. No.
41	WKBN-TV	YOUNGSTOWN OH	82.5	CP	BPCDT -19991025ACU
41	WKBN-TV	YOUNGSTOWN OH	82.5	PLN	DTVPLN -DTVP1480
42	WMPT	ANNAPOLIS MD	333.8	LIC	BLEDT -20030903ABC
42	WMPT	ANNAPOLIS MD	333.8	PLN	DTVPLN -DTVP1506
42	WMPT	ANNAPOLIS MD	333.8	CP	BPEDT -20080620AIA
42	WSKG-TV	BINGHAMTON NY	381.0	LIC	BLEDT -20050526ACA
42	WSKG-TV	BINGHAMTON NY	381.0	PLN	DTVPLN -DTVP1511
42	WGGN-TV	SANDUSKY OH	215.7	CP MOD	BMPCDT -20081024AER
42	WGGN-TV	SANDUSKY OH	254.5	PLN	DTVPLN -DTVP1512
42	WTFX-TV	PHILADELPHIA PA	407.3	CP MOD	BMPCDT -20090520AGI
42	WTFX-TV	PHILADELPHIA PA	407.3	PLN	DTVPLN -DTVP1514
42	WTFX-TV	PHILADELPHIA PA	407.3	APP	BMPCDT -20080616AAQ
42	WTFX-TV	PHILADELPHIA PA	407.3	LIC	BLCDT -20070914AAK
42	WMSY-TV	MARION VA	421.1	LIC	BLEDT -20030428ABS
42	WMSY-TV	MARION VA	421.1	PLN	DTVPLN -DTVP1521
42	WCVE-TV	RICHMOND VA	391.2	LIC	BLCDT -20050606AHG
42	WCVE-TV	RICHMOND VA	391.1	PLN	DTVPLN -DTVP1522
42	WCVE-TV	RICHMOND VA	391.1	APP	BPEDT -20080610AAQ
43	WPGH-TV	PITTSBURGH PA	0.0	CP MOD	BMPCDT -20021216AAS
43	WPGH-TV	PITTSBURGH PA	0.0	PLN	DTVPLN -DTVP1552
43	WPGH-TV	PITTSBURGH PA	0.0	LIC	BLCDT -20021216AAT
43	WLEP-LD	ERIE PA	171.7	APP	USERRECORD-01

Proposal causes no interference

#####

Analysis of Interference to Affected Station 8

Analysis of current record

Channel	Call	City/State	Application Ref. No.
43	W43BP	CRESAPTOWN MD	BLTT -19981124JI

Stations Potentially Affecting This Station

Chan	Call	City/State	Dist(km)	Status	Application Ref. No.
36	WGPT	OAKLAND MD	39.2	APP	BMPCDT -20080620ANK
36	WGPT	OAKLAND MD	39.2	PLN	DTVPLN -DTVP1332
36	WGPT	OAKLAND MD	39.2	CP	BPEDT -20080318AAB
39	WJAL	HAGERSTOWN MD	86.6	CP	BPCDT -20090730ACS
39	WJAL	HAGERSTOWN MD	86.7	PLN	DTVPLN -DTVP1406
42	W42DG-D	STATE COLLEGE PA	152.6	LIC	BLDTL -20071109AAR
42	WHSV-TV	HARRISONBURG VA	84.6	APP	BDRTCT -20090401APJ
43	WIAV-LD	WASHINGTON DC	185.6	APP	BDISDTL -20090428AAY
43	W43CH	BELVIDERE NJ	351.3	CP	BDFCDTT -20061010AET
43	WNJT	TRENTON NJ	367.3	LIC	BLEDT -20030411AAE
43	WNJT	TRENTON NJ	367.1	PLN	DTVPLN -DTVP1547
43	WNJT	TRENTON NJ	367.3	CP	BPEDT -20080620AGH
43	WNED-TV	BUFFALO NY	383.3	LIC	BLEDT -20030812AAJ
43	WNED-TV	BUFFALO NY	383.3	PLN	DTVPLN -DTVP1548
43	W47AB	MANSFIELD OH	329.6	APP	BDISDTT -20090716ABH
43	WPBO	PORTSMOUTH OH	370.1	LIC	BLEDT -20040323ATV
43	WPBO	PORTSMOUTH OH	370.1	PLN	DTVPLN -DTVP1550
43	WLEP-LD	ERIE PA	294.2	CP	BDCCDTL -20061024AER
43	W43CO-D	KINGSTON PA	319.2	CP	BDCCDTL -20061030AGG
43	WPGH-TV	PITTSBURGH PA	138.5	CP MOD	BMPCDT -20021216AAS
43	WPGH-TV	PITTSBURGH PA	138.5	PLN	DTVPLN -DTVP1552

KHANNA & GULL, Inc. – Consulting Engineers

43	WPGH-TV	PITTSBURGH PA	138.5	LIC	BLCDT	-20021216AAT
43	WTLU-LD	LYNCHBURG VA	248.1	APP	BMPDTL	-20090702ACM
43	WTLU-LD	LYNCHBURG VA	248.0	CP MOD	BMPDTL	-20080804ABZ
43	WAZM-LD	STAUNTON-WAYNESBORO VA	132.5	CP	BDCCDTL	-20061030AAA
43	WBTD-LD	SUFFOLK VA	370.9	CP	BDCCDTL	-20061020ACR
43	WVVA	BECKLEY WV	260.7	CP	BDRTCDT	-20090707AEU
44	WIAV-LD	WASHINGTON DC	171.8	CP MOD	BMPDTL	-20090630ADG
44	WWPB	HAGERSTOWN MD	79.8	LIC	BLEDT	-20031029ACE
44	WWPB	HAGERSTOWN MD	79.8	PLN	DTVPLN	-DTVP1576
44	WWPB	HAGERSTOWN MD	79.8	CP	BPEDT	-20080620ANI
44	W44CF	CLARKSBURG WV	124.7	CP	BDFCDTT	-20060313AAK
46	WKBS-TV	ALTOONA PA	116.6	CP	BPCDT	-20080620ACM
46	WKBS-TV	ALTOONA PA	116.6	PLN	DTVPLN	-DTVP1656
46	WKBS-TV	ALTOONA PA	116.6	LIC	BLCDT	-20060629ACS
50	WPCB-TV	GREENSBURG PA	117.5	LIC	BLCDT	-20030409ABC
50	WPCB-TV	GREENSBURG PA	117.5	PLN	DTVPLN	-DTVP1779
51	WTAE-TV	PITTSBURGH PA	109.5	LIC	BLCDT	-20041014AEY
51	WTAE-TV	PITTSBURGH PA	109.5	PLN	DTVPLN	-DTVP1810
51	WWPX-DR	MARTINSBURG WV	102.4	APP	BPRM	-20080619ALR
43	WLEP-LD	ERIE PA	290.2	APP	USERRECORD-01	

Proposal causes no interference

#####

Analysis of Interference to Affected Station 9

Analysis of current record

Channel	Call	City/State	Application Ref. No.
43	WTVS	DETROIT MI	BLEDT -20001117ABV

Stations Potentially Affecting This Station

Chan	Call	City/State	Dist(km)	Status	Application Ref. No.
42	WGGN-TV	SANDUSKY OH	163.9	CP MOD	BMPCDT -20081024AER
42	WGGN-TV	SANDUSKY OH	121.0	PLN	DTVPLN -DTVP1512
43	WCPX-TV	CHICAGO IL	372.7	APP	BPCDT -20080619AIL
43	WCPX	CHICAGO IL	373.0	PLN	DTVPLN -DTVP1536
43	WCPX-TV	CHICAGO IL	373.0	LIC	BLCDT -20010226ABH
43	WNED-TV	BUFFALO NY	353.1	LIC	BLEDT -20030812AAJ
43	WNED-TV	BUFFALO NY	353.1	PLN	DTVPLN -DTVP1548
43	WPBO	PORTSMOUTH OH	409.8	LIC	BLEDT -20040323ATV
43	WPBO	PORTSMOUTH OH	409.8	PLN	DTVPLN -DTVP1550
43	WPGH-TV	PITTSBURGH PA	341.6	CP MOD	BMPCDT -20021216AAS
43	WPGH-TV	PITTSBURGH PA	341.6	PLN	DTVPLN -DTVP1552
43	WPGH-TV	PITTSBURGH PA	341.6	LIC	BLCDT -20021216AAT
44	WZPX-TV	BATTLE CREEK MI	157.1	LIC	BLCDT -20020510AAG
44	WZPX	BATTLE CREEK MI	157.1	PLN	DTVPLN -DTVP1578
44	WWJ-TV	DETROIT MI	0.0	CP MOD	BMPCDT -20080616ABD
44	WWJ-TV	DETROIT MI	0.0	PLN	DTVPLN -DTVP1579
44	WWJ-TV	DETROIT MI	0.0	LIC	BLCDT -19990720LH
44	WTLW	LIMA OH	205.2	CP MOD	BMPCDT -20080616ABV
44	WTLW	LIMA OH	205.2	PLN	DTVPLN -DTVP1589
43	WLEP-LD	ERIE PA	260.1	APP	USERRECORD-01

Proposal causes no interference

#####

Analysis of Interference to Affected Station 10

Analysis of current record

Channel	Call	City/State	Application Ref. No.
43	WTVS	DETROIT MI	BPEDT -20080620AAL

Stations Potentially Affecting This Station

Chan	Call	City/State	Dist(km)	Status	Application Ref. No.
42	WGGN-TV	SANDUSKY OH	163.9	CP MOD	BMPCDT -20081024AER

KHANNA & GULL, Inc. – Consulting Engineers

42	WGGN-TV	SANDUSKY OH	121.0	PLN	DTVPLN	-DTVP1512
43	WCPX-TV	CHICAGO IL	372.7	APP	BPCDT	-20080619AIL
43	WCPX	CHICAGO IL	373.0	PLN	DTVPLN	-DTVP1536
43	WCPX-TV	CHICAGO IL	373.0	LIC	BLCDT	-20010226ABH
43	WNED-TV	BUFFALO NY	353.1	LIC	BLEDT	-20030812AAJ
43	WNED-TV	BUFFALO NY	353.1	PLN	DTVPLN	-DTVP1548
43	WPBO	PORTSMOUTH OH	409.8	LIC	BLEDT	-20040323ATV
43	WPBO	PORTSMOUTH OH	409.8	PLN	DTVPLN	-DTVP1550
43	WPGH-TV	PITTSBURGH PA	341.6	CP MOD	BMPCDT	-20021216AAS
43	WPGH-TV	PITTSBURGH PA	341.6	PLN	DTVPLN	-DTVP1552
43	WPGH-TV	PITTSBURGH PA	341.6	LIC	BLCDT	-20021216AAT
44	WZPX-TV	BATTLE CREEK MI	157.1	LIC	BLCDT	-20020510AAG
44	WZPX	BATTLE CREEK MI	157.1	PLN	DTVPLN	-DTVP1578
44	WWJ-TV	DETROIT MI	0.0	CP MOD	BMPCDT	-20080616ABD
44	WWJ-TV	DETROIT MI	0.0	PLN	DTVPLN	-DTVP1579
44	WWJ-TV	DETROIT MI	0.0	LIC	BLCDT	-19990720LH
44	WTLW	LIMA OH	205.2	CP MOD	BMPCDT	-20080616ABV
44	WTLW	LIMA OH	205.2	PLN	DTVPLN	-DTVP1589
43	WLEP-LD	ERIE PA	260.1	APP	USERRECORD-01	

Proposal causes no interference

#####

Analysis of Interference to Affected Station 11

Analysis of current record

Channel	Call	City/State	Application	Ref. No.
43	WNED-TV	BUFFALO NY	BLEDT	-20030812AAJ

Stations Potentially Affecting This Station

Chan	Call	City/State	Dist(km)	Status	Application	Ref. No.
43	WTVS	DETROIT MI	353.1	LIC	BLEDT	-20001117ABV
43	WTVS	DETROIT MI	353.1	PLN	DTVPLN	-DTVP1541
43	WTVS	DETROIT MI	353.1	CP	BPEDT	-20080620AAL
43	WCWN	SCHENECTADY NY	402.7	LIC	BLCDT	-20050623ABN
43	WCWN	SCHENECTADY NY	402.7	PLN	DTVPLN	-DTVP1549
43	WCWN	SCHENECTADY NY	402.7	CP	BPCDT	-20080620ABN
43	WPGH-TV	PITTSBURGH PA	295.7	CP MOD	BMPCDT	-20021216AAS
43	WPGH-TV	PITTSBURGH PA	295.7	PLN	DTVPLN	-DTVP1552
43	WPGH-TV	PITTSBURGH PA	295.7	LIC	BLCDT	-20021216AAT
44	WNYS-TV	SYRACUSE NY	221.9	LIC	BLCDT	-20060509AAQ
44	WNYS-TV	SYRACUSE NY	221.9	PLN	DTVPLN	-DTVP1588
43	WLEP-LD	ERIE PA	144.4	APP	USERRECORD-01	

Total scenarios = 3

Result key: 1

Scenario 1 Affected station 11 WNED-TV
Before Analysis

Results for: 43A NY BUFFALO BLEDT 20030812AAJ LIC

HAAT 328.0 m, ATV ERP 156.0 kW

	POPULATION	AREA (sq km)
within Noise Limited Contour	1406258	21956.2
not affected by terrain losses	1388165	21559.8
lost to NTSC IX	0	0.0
lost to additional IX by ATV	745	27.5
lost to ATV IX only	745	27.5
lost to all IX	745	27.5

Potential Interfering Stations Included in above Scenario 1

43A PA PITTSBURGH BMPCDT 20021216AAS CP

After Analysis

Results for: 43A NY BUFFALO BLEDT 20030812AAJ LIC

HAAT 328.0 m, ATV ERP 156.0 kW

	POPULATION	AREA (sq km)
within Noise Limited Contour	1406258	21956.2
not affected by terrain losses	1388165	21559.8
lost to NTSC IX	0	0.0
lost to additional IX by ATV	796	431.7
lost to ATV IX only	796	431.7
lost to all IX	796	431.7

Potential Interfering Stations Included in above Scenario 1

43A PA PITTSBURGH	BMPCDT	20021216AAS	CP
43A PA ERIE	USERRECORD01		APP

Percent new IX = 0.0037%

Result key: 2
 Scenario 2 Affected station 11 WNED-TV
 Before Analysis

Results for: 43A NY BUFFALO BLEDT 20030812AAJ LIC

HAAT 328.0 m, ATV ERP 156.0 kW

	POPULATION	AREA (sq km)
within Noise Limited Contour	1406258	21956.2
not affected by terrain losses	1388165	21559.8
lost to NTSC IX	0	0.0
lost to additional IX by ATV	745	27.5
lost to ATV IX only	745	27.5
lost to all IX	745	27.5

Potential Interfering Stations Included in above Scenario 2

43A PA PITTSBURGH	DTVPLN	DTVP1552	PLN
-------------------	--------	----------	-----

After Analysis

Results for: 43A NY BUFFALO BLEDT 20030812AAJ LIC

HAAT 328.0 m, ATV ERP 156.0 kW

	POPULATION	AREA (sq km)
within Noise Limited Contour	1406258	21956.2
not affected by terrain losses	1388165	21559.8
lost to NTSC IX	0	0.0
lost to additional IX by ATV	796	431.7
lost to ATV IX only	796	431.7
lost to all IX	796	431.7

Potential Interfering Stations Included in above Scenario 2

43A PA PITTSBURGH	DTVPLN	DTVP1552	PLN
43A PA ERIE	USERRECORD01		APP

Percent new IX = 0.0037%

Result key: 3
 Scenario 3 Affected station 11 WNED-TV
 Before Analysis

Results for: 43A NY BUFFALO BLEDT 20030812AAJ LIC

HAAT 328.0 m, ATV ERP 156.0 kW

	POPULATION	AREA (sq km)
within Noise Limited Contour	1406258	21956.2
not affected by terrain losses	1388165	21559.8
lost to NTSC IX	0	0.0
lost to additional IX by ATV	745	27.5
lost to ATV IX only	745	27.5
lost to all IX	745	27.5

Potential Interfering Stations Included in above Scenario 3

43A PA PITTSBURGH	BLCDDT	20021216AAT	LIC
-------------------	--------	-------------	-----

After Analysis

Results for: 43A NY BUFFALO BLEDT 20030812AAJ LIC
 HAAT 328.0 m, ATV ERP 156.0 kW

	POPULATION	AREA (sq km)
within Noise Limited Contour	1406258	21956.2
not affected by terrain losses	1388165	21559.8
lost to NTSC IX	0	0.0
lost to additional IX by ATV	796	431.7
lost to ATV IX only	796	431.7
lost to all IX	796	431.7

Potential Interfering Stations Included in above Scenario 3

43A PA PITTSBURGH BLCDT 20021216AAT LIC
 43A PA ERIE USERRECORD01 APP

Percent new IX = 0.0037%

Worst case new IX 0.0037% Scenario 1

#####

Analysis of Interference to Affected Station 12

Analysis of current record

Channel	Call	City/State	Application	Ref. No.
43	W43BZ	COLUMBUS OH	BLTTL	-20031121A00

Stations Potentially Affecting This Station

Chan	Call	City/State	Dist(km)	Status	Application	Ref. No.
36	WTTE	COLUMBUS OH	3.8	CP	BPCDT	-19991029AGZ
36	WTTE	COLUMBUS OH	3.8	PLN	DTVPLN	-DTVP1341
40	WHIZ-TV	ZANESVILLE OH	89.0	CP MOD	BMPCDT	-20071022BPE
40	WHIZ-TV	ZANESVILLE OH	89.0	PLN	DTVPLN	-DTVP1446
41	WHIO-TV	DAYTON OH	107.4	LIC	BLCDT	-20040614AEY
41	WHIO-TV	DAYTON OH	107.4	PLN	DTVPLN	-DTVP1479
41	WHIO-TV	DAYTON OH	107.4	CP	BPCDT	-20080619ACK
42	WXCB-CD	DELAWARE OH	38.1	CP	BDFCDTA	-20080804AAX
42	WXCB-CD	DELAWARE OH	38.1	APP	BSTA	-20080604ADF
42	WXCB-CD	DELAWARE OH	38.1	LIC	BLDTA	-20090511AQS
42	WXCB-CD	DELAWARE OH	36.5	LIC	BLTTA	-20030402AAU
42	WGGN-TV	SANDUSKY OH	132.0	CP MOD	BMPCDT	-20081024AER
43	W43BV	TERRE HAUTE IN	380.9	CP	BDFCDTT	-20060313AAJ
43	WKZT-TV	ELIZABETHTOWN KY	352.3	LIC	BLEDT	-20011221ABK
43	WKZT-TV	ELIZABETHTOWN KY	352.3	PLN	DTVPLN	-DTVP1537
43	WTVS	DETROIT MI	275.5	LIC	BLEDT	-20001117ABV
43	WTVS	DETROIT MI	275.5	PLN	DTVPLN	-DTVP1541
43	WTVS	DETROIT MI	275.5	CP	BPEDT	-20080620AAL
43	W47AB	MANSFIELD OH	94.0	APP	BDISDTT	-20090716ABH
43	WPBO	PORTSMOUTH OH	134.5	LIC	BLEDT	-20040323ATV
43	WPBO	PORTSMOUTH OH	134.5	PLN	DTVPLN	-DTVP1550
43	WLEP-LD	ERIE PA	346.0	CP	BDCCDTL	-20061024AER
43	WPGH-TV	PITTSBURGH PA	263.0	CP MOD	BMPCDT	-20021216AAS
43	WPGH-TV	PITTSBURGH PA	263.0	PLN	DTVPLN	-DTVP1552
43	WPGH-TV	PITTSBURGH PA	263.0	LIC	BLCDT	-20021216AAT
43	WAZM-LD	STAUNTON-WAYNESBORO VA	406.5	CP	BDCCDTL	-20061030AAA
43	WVVA	BECKLEY WV	290.3	CP	BDRTCDT	-20090707AEU
44	WXOX-LP	CLEVELAND OH	193.1	APP	BDFCDTL	-20080221ACU
44	WTLW	LIMA OH	131.6	CP MOD	BMPCDT	-20080616ABV
44	WTLW	LIMA OH	131.6	PLN	DTVPLN	-DTVP1589
46	WWHO	CHILLICOTHE OH	43.1	LIC	BLCDT	-20021025AAA
46	WWHO	CHILLICOTHE OH	43.1	PLN	DTVPLN	-DTVP1652
50	WDTN	DAYTON OH	108.5	LIC	BLCDT	-20050629AAL
50	WDTN	DAYTON OH	108.5	PLN	DTVPLN	-DTVP1776
51	WKEF	DAYTON OH	108.3	APP	BPCDT	-20090320AGS
51	WKEF	DAYTON OH	108.3	PLN	DTVPLN	-DTVP1807
51	WKEF	DAYTON OH	108.3	LIC	BLCDT	-20050620AAP

43 WLEP-LD ERIE PA 338.7 APP USERRECORD-01
 Proposal causes no interference

#####

Analysis of Interference to Affected Station 13

Analysis of current record

Channel	Call	City/State	Application Ref. No.
43	W47AB	MANSFIELD OH	BDISDTT -20090716ABH

Stations Potentially Affecting This Station

Chan	Call	City/State	Dist(km)	Status	Application Ref. No.
42	WXCW-CD	DELAWARE OH	64.9	CP	BDFCDTA -20080804AAX
42	WXCW-CD	DELAWARE OH	64.9	LIC	BLDTA -20090511AQS
42	WGGN-TV	SANDUSKY OH	40.8	CP MOD	BMPCDT -20081024AER
42	WGGN-TV	SANDUSKY OH	80.6	PLN	DTVPLN -DTVPL1512
43	WTVS	DETROIT MI	201.5	LIC	BLEDT -20001117ABV
43	WTVS	DETROIT MI	201.5	PLN	DTVPLN -DTVPL1541
43	WTVS	DETROIT MI	201.5	CP	BPEDT -20080620AAL
43	WNED-TV	BUFFALO NY	391.9	LIC	BLEDT -20030812AAJ
43	WNED-TV	BUFFALO NY	391.9	PLN	DTVPLN -DTVPL1548
43	WPBO	PORTSMOUTH OH	222.0	LIC	BLEDT -20040323ATV
43	WPBO	PORTSMOUTH OH	222.0	PLN	DTVPLN -DTVPL1550
43	WPGH-TV	PITTSBURGH PA	210.7	CP MOD	BMPCDT -20021216AAS
43	WPGH-TV	PITTSBURGH PA	210.7	PLN	DTVPLN -DTVPL1552
43	WPGH-TV	PITTSBURGH PA	210.7	LIC	BLCDT -20021216AAT
43	WAZM-LD	STAUNTON-WAYNESBORO VA	409.4	CP	BDCCDTL -20061030AAA
43	WVVA	BECKLEY WV	338.1	CP	BDRTCDT -20090707AEU
44	WXOX-LP	CLEVELAND OH	100.1	APP	BDFCDTL -20080221ACU
44	W58AM	YOUNGSTOWN OH	160.5	CP	BDISDTT -20060331ARW
43	WLEP-LD	ERIE PA	250.5	APP	USERRECORD-01

Proposal causes no interference

#####

Analysis of Interference to Affected Station 14

Analysis of current record

Channel	Call	City/State	Application Ref. No.
43	W43CO-D	KINGSTON PA	BDCCDTL -20061030AGG

Stations Potentially Affecting This Station

Chan	Call	City/State	Dist(km)	Status	Application Ref. No.
42	WSKG-TV	BINGHAMTON NY	83.1	LIC	BLEDT -20050526ACA
42	WSKG-TV	BINGHAMTON NY	83.1	PLN	DTVPLN -DTVPL1511
42	W42CX	PORT JERVIS NY	128.6	CP	BDFCDTL -20080215AGD
42	WNGX-LP	SCHENECTADY NY	227.4	CP	BDFCDTL -20060331AZF
42	W30AJ	SYRACUSE NY	194.1	APP	BDISDTL -20090310ADY
42	W42DG-D	STATE COLLEGE PA	180.6	LIC	BLDTL -20071109AAR
43	WIAV-LD	WASHINGTON DC	271.6	APP	BDISDTL -20090428AAY
43	W43CH	BELVIDERE NJ	91.8	CP	BDFCDTT -20061010AET
43	WNJT	TRENTON NJ	152.9	LIC	BLEDT -20030411AAE
43	WNJT	TRENTON NJ	152.7	PLN	DTVPLN -DTVPL1547
43	WNJT	TRENTON NJ	152.9	CP	BPEDT -20080620AGH
43	WNED-TV	BUFFALO NY	314.2	LIC	BLEDT -20030812AAJ
43	WNED-TV	BUFFALO NY	314.2	PLN	DTVPLN -DTVPL1548
43	WNXY-LP	NEW YORK NY	174.8	CP MOD	BMPDTL -20081202AEM
43	WNXY-LP	NEW YORK NY	174.8	CP MOD	BMPDTL -20080805AAW
43	WNXY-LP	NEW YORK NY	174.8	CP	BDISDTL -20080505AAS
43	W43CN-D	PORT JERVIS NY	128.6	CP MOD	BMPDTL -20080325AIB
43	WCWN	SCHENECTADY NY	212.8	LIC	BLCDT -20050623ABN
43	WCWN	SCHENECTADY NY	212.8	PLN	DTVPLN -DTVPL1549
43	WCWN	SCHENECTADY NY	212.8	CP	BPCDT -20080620ABN
43	WPGH-TV	PITTSBURGH PA	357.6	CP MOD	BMPCDT -20021216AAS

KHANNA & GULL, Inc. – Consulting Engineers

43	WPGH-TV	PITTSBURGH PA	357.6	PLN	DTVPLN	-DTVP1552
43	WPGH-TV	PITTSBURGH PA	357.6	LIC	BLCDT	-20021216AAT
43	WAZM-LD	STAUNTON-WAYNESBORO VA	407.3	CP	BDCCDTL	-20061030AAA
44	W58CX	ALBANY NY	214.5	CP	BDISDTL	-20081216BKK
44	WVIA-TV	WAYMART PA	52.2	APP	BDRTET	-20090430ABG
43	WLEP-LD	ERIE PA	355.6	APP	USERRECORD-01	

Proposed station is beyond the site to
nearest cell evaluation distance

#####

Analysis of Interference to Affected Station 15

Analysis of current record

Channel	Call	City/State	Application	Ref. No.
43	WPGH-TV	PITTSBURGH PA	BMPCDT	-20021216AAS

Stations Potentially Affecting This Station

Chan	Call	City/State	Dist(km)	Status	Application	Ref. No.
42	WGGN-TV	SANDUSKY OH	215.7	CP MOD	BMPCDT	-20081024AER
42	WPMY	PITTSBURGH PA	0.0	LIC	BLCDT	-20060608AAB
42	WPMY	PITTSBURGH PA	0.0	PLN	DTVPLN	-DTVP1515
43	WTVS	DETROIT MI	341.6	LIC	BLEDT	-20001117ABV
43	WTVS	DETROIT MI	341.6	PLN	DTVPLN	-DTVP1541
43	WTVS	DETROIT MI	341.6	CP	BPEDT	-20080620AAL
43	WNED-TV	BUFFALO NY	295.7	LIC	BLEDT	-20030812AAJ
43	WNED-TV	BUFFALO NY	295.7	PLN	DTVPLN	-DTVP1548
43	WPBO	PORTSMOUTH OH	324.9	LIC	BLEDT	-20040323ATV
43	WPBO	PORTSMOUTH OH	324.9	PLN	DTVPLN	-DTVP1550
44	WWPB	HAGERSTOWN MD	196.8	LIC	BLEDT	-20031029ACE
44	WWPB	HAGERSTOWN MD	196.8	PLN	DTVPLN	-DTVP1576
44	WWPB	HAGERSTOWN MD	196.8	CP	BPEDT	-20080620ANI
43	WLEP-LD	ERIE PA	171.7	APP	USERRECORD-01	

Total scenarios = 24

Result key: 4

Scenario 1 Affected station 15 WPGH-TV
Before Analysis

Results for: 43A PA PITTSBURGH BMPCDT 20021216AAS CP
HAAT 303.0 m, ATV ERP 1000.0 kW

	POPULATION	AREA (sq km)
within Noise Limited Contour	3246666	25897.4
not affected by terrain losses	3097397	24040.1
lost to NTSC IX	0	0.0
lost to additional IX by ATV	1945	47.9
lost to ATV IX only	1945	47.9
lost to all IX	1945	47.9

Potential Interfering Stations Included in above Scenario 1

42A PA PITTSBURGH	BLCDT	20060608AAB	LIC
43A MI DETROIT	BLEDT	20001117ABV	LIC
43A NY BUFFALO	BLEDT	20030812AAJ	LIC
43A OH PORTSMOUTH	BLEDT	20040323ATV	LIC

After Analysis

Results for: 43A PA PITTSBURGH BMPCDT 20021216AAS CP
HAAT 303.0 m, ATV ERP 1000.0 kW

	POPULATION	AREA (sq km)
within Noise Limited Contour	3246666	25897.4
not affected by terrain losses	3097397	24040.1
lost to NTSC IX	0	0.0
lost to additional IX by ATV	1945	47.9

KHANNA & GULL, Inc. – Consulting Engineers

lost to ATV IX only	1945	47.9
lost to all IX	1945	47.9

Potential Interfering Stations Included in above Scenario 1

42A PA PITTSBURGH	BLCDT	20060608AAB	LIC
43A MI DETROIT	BLEDT	20001117ABV	LIC
43A NY BUFFALO	BLEDT	20030812AAJ	LIC
43A OH PORTSMOUTH	BLEDT	20040323ATV	LIC
43A PA ERIE	USERRECORD01		APP

Percent new IX = 0.0000%

Result key: 5
 Scenario 2 Affected station 15 WPGH-TV
 Before Analysis

Results for: 43A PA PITTSBURGH BMPCDT 20021216AAS CP
 HAAT 303.0 m, ATV ERP 1000.0 kW

	POPULATION	AREA (sq km)
within Noise Limited Contour	3246666	25897.4
not affected by terrain losses	3097397	24040.1
lost to NTSC IX	0	0.0
lost to additional IX by ATV	1945	47.9
lost to ATV IX only	1945	47.9
lost to all IX	1945	47.9

Potential Interfering Stations Included in above Scenario 2

42A PA PITTSBURGH	BLCDT	20060608AAB	LIC
43A MI DETROIT	BLEDT	20001117ABV	LIC
43A NY BUFFALO	BLEDT	20030812AAJ	LIC
43A OH PORTSMOUTH	DTVPLN	DTVP1550	PLN

After Analysis

Results for: 43A PA PITTSBURGH BMPCDT 20021216AAS CP
 HAAT 303.0 m, ATV ERP 1000.0 kW

	POPULATION	AREA (sq km)
within Noise Limited Contour	3246666	25897.4
not affected by terrain losses	3097397	24040.1
lost to NTSC IX	0	0.0
lost to additional IX by ATV	1945	47.9
lost to ATV IX only	1945	47.9
lost to all IX	1945	47.9

Potential Interfering Stations Included in above Scenario 2

42A PA PITTSBURGH	BLCDT	20060608AAB	LIC
43A MI DETROIT	BLEDT	20001117ABV	LIC
43A NY BUFFALO	BLEDT	20030812AAJ	LIC
43A OH PORTSMOUTH	DTVPLN	DTVP1550	PLN
43A PA ERIE	USERRECORD01		APP

Percent new IX = 0.0000%

Result key: 6
 Scenario 3 Affected station 15 WPGH-TV
 Before Analysis

Results for: 43A PA PITTSBURGH BMPCDT 20021216AAS CP
 HAAT 303.0 m, ATV ERP 1000.0 kW

	POPULATION	AREA (sq km)
within Noise Limited Contour	3246666	25897.4
not affected by terrain losses	3097397	24040.1
lost to NTSC IX	0	0.0
lost to additional IX by ATV	1945	47.9
lost to ATV IX only	1945	47.9
lost to all IX	1945	47.9

Potential Interfering Stations Included in above Scenario 3

42A PA PITTSBURGH	BLCDT	20060608AAB	LIC
43A MI DETROIT	BLEDT	20001117ABV	LIC
43A NY BUFFALO	DTVPLN	DTVP1548	PLN
43A OH PORTSMOUTH	BLEDT	20040323ATV	LIC

After Analysis

Results for: 43A PA PITTSBURGH BMPCDT 20021216AAS CP
 HAAT 303.0 m, ATV ERP 1000.0 kW

	POPULATION	AREA (sq km)
within Noise Limited Contour	3246666	25897.4
not affected by terrain losses	3097397	24040.1
lost to NTSC IX	0	0.0
lost to additional IX by ATV	1945	47.9
lost to ATV IX only	1945	47.9
lost to all IX	1945	47.9

Potential Interfering Stations Included in above Scenario 3

42A PA PITTSBURGH	BLCDT	20060608AAB	LIC
43A MI DETROIT	BLEDT	20001117ABV	LIC
43A NY BUFFALO	DTVPLN	DTVP1548	PLN
43A OH PORTSMOUTH	BLEDT	20040323ATV	LIC
43A PA ERIE	USERRECORD01		APP

Percent new IX = 0.0000%

Result key: 7
 Scenario 4 Affected station 15 WPGH-TV
 Before Analysis

Results for: 43A PA PITTSBURGH BMPCDT 20021216AAS CP
 HAAT 303.0 m, ATV ERP 1000.0 kW

	POPULATION	AREA (sq km)
within Noise Limited Contour	3246666	25897.4
not affected by terrain losses	3097397	24040.1
lost to NTSC IX	0	0.0
lost to additional IX by ATV	1945	47.9
lost to ATV IX only	1945	47.9
lost to all IX	1945	47.9

Potential Interfering Stations Included in above Scenario 4

42A PA PITTSBURGH	BLCDT	20060608AAB	LIC
43A MI DETROIT	BLEDT	20001117ABV	LIC
43A NY BUFFALO	DTVPLN	DTVP1548	PLN
43A OH PORTSMOUTH	DTVPLN	DTVP1550	PLN

After Analysis

Results for: 43A PA PITTSBURGH BMPCDT 20021216AAS CP
 HAAT 303.0 m, ATV ERP 1000.0 kW

	POPULATION	AREA (sq km)
within Noise Limited Contour	3246666	25897.4
not affected by terrain losses	3097397	24040.1
lost to NTSC IX	0	0.0
lost to additional IX by ATV	1945	47.9
lost to ATV IX only	1945	47.9
lost to all IX	1945	47.9

Potential Interfering Stations Included in above Scenario 4

42A PA PITTSBURGH	BLCDT	20060608AAB	LIC
43A MI DETROIT	BLEDT	20001117ABV	LIC
43A NY BUFFALO	DTVPLN	DTVP1548	PLN
43A OH PORTSMOUTH	DTVPLN	DTVP1550	PLN
43A PA ERIE	USERRECORD01		APP

Percent new IX = 0.0000%

Result key: 8
 Scenario 5 Affected station 15 WPGH-TV
 Before Analysis

Results for: 43A PA PITTSBURGH BMPCDT 20021216AAS CP
 HAAT 303.0 m, ATV ERP 1000.0 kW

	POPULATION	AREA (sq km)
within Noise Limited Contour	3246666	25897.4
not affected by terrain losses	3097397	24040.1
lost to NTSC IX	0	0.0
lost to additional IX by ATV	1945	47.9
lost to ATV IX only	1945	47.9
lost to all IX	1945	47.9

Potential Interfering Stations Included in above Scenario 5

42A PA PITTSBURGH	BLCDT	20060608AAB	LIC
43A MI DETROIT	DTVPLN	DTVP1541	PLN
43A NY BUFFALO	BLEDT	20030812AAJ	LIC
43A OH PORTSMOUTH	BLEDT	20040323ATV	LIC

After Analysis

Results for: 43A PA PITTSBURGH BMPCDT 20021216AAS CP
 HAAT 303.0 m, ATV ERP 1000.0 kW

	POPULATION	AREA (sq km)
within Noise Limited Contour	3246666	25897.4
not affected by terrain losses	3097397	24040.1
lost to NTSC IX	0	0.0
lost to additional IX by ATV	1945	47.9
lost to ATV IX only	1945	47.9
lost to all IX	1945	47.9

Potential Interfering Stations Included in above Scenario 5

42A PA PITTSBURGH	BLCDT	20060608AAB	LIC
43A MI DETROIT	DTVPLN	DTVP1541	PLN
43A NY BUFFALO	BLEDT	20030812AAJ	LIC
43A OH PORTSMOUTH	BLEDT	20040323ATV	LIC
43A PA ERIE	USERRECORD01		APP

Percent new IX = 0.0000%

Result key: 9
 Scenario 6 Affected station 15 WPGH-TV
 Before Analysis

Results for: 43A PA PITTSBURGH BMPCDT 20021216AAS CP
 HAAT 303.0 m, ATV ERP 1000.0 kW

	POPULATION	AREA (sq km)
within Noise Limited Contour	3246666	25897.4
not affected by terrain losses	3097397	24040.1
lost to NTSC IX	0	0.0
lost to additional IX by ATV	1945	47.9
lost to ATV IX only	1945	47.9
lost to all IX	1945	47.9

Potential Interfering Stations Included in above Scenario 6

42A PA PITTSBURGH	BLCDT	20060608AAB	LIC
43A MI DETROIT	DTVPLN	DTVP1541	PLN
43A NY BUFFALO	BLEDT	20030812AAJ	LIC
43A OH PORTSMOUTH	DTVPLN	DTVP1550	PLN

After Analysis

Results for: 43A PA PITTSBURGH BMPCDT 20021216AAS CP
 HAAT 303.0 m, ATV ERP 1000.0 kW

	POPULATION	AREA (sq km)
within Noise Limited Contour	3246666	25897.4
not affected by terrain losses	3097397	24040.1

lost to NTSC IX	0	0.0
lost to additional IX by ATV	1945	47.9
lost to ATV IX only	1945	47.9
lost to all IX	1945	47.9

Potential Interfering Stations Included in above Scenario 6

42A PA PITTSBURGH	BLCDT	20060608AAB	LIC
43A MI DETROIT	DTVPLN	DTVP1541	PLN
43A NY BUFFALO	BLEDT	20030812AAJ	LIC
43A OH PORTSMOUTH	DTVPLN	DTVP1550	PLN
43A PA ERIE	USERRECORD01		APP

Percent new IX = 0.0000%

Result key: 10
 Scenario 7 Affected station 15 WPGH-TV
 Before Analysis

Results for: 43A PA PITTSBURGH BMPCDT 20021216AAS CP
 HAAT 303.0 m, ATV ERP 1000.0 kW

	POPULATION	AREA (sq km)
within Noise Limited Contour	3246666	25897.4
not affected by terrain losses	3097397	24040.1
lost to NTSC IX	0	0.0
lost to additional IX by ATV	1945	47.9
lost to ATV IX only	1945	47.9
lost to all IX	1945	47.9

Potential Interfering Stations Included in above Scenario 7

42A PA PITTSBURGH	BLCDT	20060608AAB	LIC
43A MI DETROIT	DTVPLN	DTVP1541	PLN
43A NY BUFFALO	DTVPLN	DTVP1548	PLN
43A OH PORTSMOUTH	BLEDT	20040323ATV	LIC

After Analysis

Results for: 43A PA PITTSBURGH BMPCDT 20021216AAS CP
 HAAT 303.0 m, ATV ERP 1000.0 kW

	POPULATION	AREA (sq km)
within Noise Limited Contour	3246666	25897.4
not affected by terrain losses	3097397	24040.1
lost to NTSC IX	0	0.0
lost to additional IX by ATV	1945	47.9
lost to ATV IX only	1945	47.9
lost to all IX	1945	47.9

Potential Interfering Stations Included in above Scenario 7

42A PA PITTSBURGH	BLCDT	20060608AAB	LIC
43A MI DETROIT	DTVPLN	DTVP1541	PLN
43A NY BUFFALO	DTVPLN	DTVP1548	PLN
43A OH PORTSMOUTH	BLEDT	20040323ATV	LIC
43A PA ERIE	USERRECORD01		APP

Percent new IX = 0.0000%

Result key: 11
 Scenario 8 Affected station 15 WPGH-TV
 Before Analysis

Results for: 43A PA PITTSBURGH BMPCDT 20021216AAS CP
 HAAT 303.0 m, ATV ERP 1000.0 kW

	POPULATION	AREA (sq km)
within Noise Limited Contour	3246666	25897.4
not affected by terrain losses	3097397	24040.1
lost to NTSC IX	0	0.0
lost to additional IX by ATV	1945	47.9
lost to ATV IX only	1945	47.9
lost to all IX	1945	47.9

Potential Interfering Stations Included in above Scenario 8

42A PA PITTSBURGH	BLCDT	20060608AAB	LIC
43A MI DETROIT	DTVPLN	DTVP1541	PLN
43A NY BUFFALO	DTVPLN	DTVP1548	PLN
43A OH PORTSMOUTH	DTVPLN	DTVP1550	PLN

After Analysis

Results for: 43A PA PITTSBURGH BMPCDT 20021216AAS CP
 HAAT 303.0 m, ATV ERP 1000.0 kW

	POPULATION	AREA (sq km)
within Noise Limited Contour	3246666	25897.4
not affected by terrain losses	3097397	24040.1
lost to NTSC IX	0	0.0
lost to additional IX by ATV	1945	47.9
lost to ATV IX only	1945	47.9
lost to all IX	1945	47.9

Potential Interfering Stations Included in above Scenario 8

42A PA PITTSBURGH	BLCDT	20060608AAB	LIC
43A MI DETROIT	DTVPLN	DTVP1541	PLN
43A NY BUFFALO	DTVPLN	DTVP1548	PLN
43A OH PORTSMOUTH	DTVPLN	DTVP1550	PLN
43A PA ERIE	USERRECORD01		APP

Percent new IX = 0.0000%

Result key: 12
 Scenario 9 Affected station 15 WPGH-TV
 Before Analysis

Results for: 43A PA PITTSBURGH BMPCDT 20021216AAS CP
 HAAT 303.0 m, ATV ERP 1000.0 kW

	POPULATION	AREA (sq km)
within Noise Limited Contour	3246666	25897.4
not affected by terrain losses	3097397	24040.1
lost to NTSC IX	0	0.0
lost to additional IX by ATV	3890	56.9
lost to ATV IX only	3890	56.9
lost to all IX	3890	56.9

Potential Interfering Stations Included in above Scenario 9

42A PA PITTSBURGH	BLCDT	20060608AAB	LIC
43A MI DETROIT	BPEDT	20080620AAL	CP
43A NY BUFFALO	BLEDT	20030812AAJ	LIC
43A OH PORTSMOUTH	BLEDT	20040323ATV	LIC

After Analysis

Results for: 43A PA PITTSBURGH BMPCDT 20021216AAS CP
 HAAT 303.0 m, ATV ERP 1000.0 kW

	POPULATION	AREA (sq km)
within Noise Limited Contour	3246666	25897.4
not affected by terrain losses	3097397	24040.1
lost to NTSC IX	0	0.0
lost to additional IX by ATV	3890	56.9
lost to ATV IX only	3890	56.9
lost to all IX	3890	56.9

Potential Interfering Stations Included in above Scenario 9

42A PA PITTSBURGH	BLCDT	20060608AAB	LIC
43A MI DETROIT	BPEDT	20080620AAL	CP
43A NY BUFFALO	BLEDT	20030812AAJ	LIC
43A OH PORTSMOUTH	BLEDT	20040323ATV	LIC
43A PA ERIE	USERRECORD01		APP

Percent new IX = 0.0000%

Result key: 13
 Scenario 10 Affected station 15 WPGH-TV
 Before Analysis

Results for: 43A PA PITTSBURGH BMPCDT 20021216AAS CP
 HAAT 303.0 m, ATV ERP 1000.0 kW

	POPULATION	AREA (sq km)
within Noise Limited Contour	3246666	25897.4
not affected by terrain losses	3097397	24040.1
lost to NTSC IX	0	0.0
lost to additional IX by ATV	3890	56.9
lost to ATV IX only	3890	56.9
lost to all IX	3890	56.9

Potential Interfering Stations Included in above Scenario 10

42A PA PITTSBURGH	BLCDDT	20060608AAB	LIC
43A MI DETROIT	BPEDT	20080620AAL	CP
43A NY BUFFALO	BLEDT	20030812AAJ	LIC
43A OH PORTSMOUTH	DTVPLN	DTVP1550	PLN

After Analysis

Results for: 43A PA PITTSBURGH BMPCDT 20021216AAS CP
 HAAT 303.0 m, ATV ERP 1000.0 kW

	POPULATION	AREA (sq km)
within Noise Limited Contour	3246666	25897.4
not affected by terrain losses	3097397	24040.1
lost to NTSC IX	0	0.0
lost to additional IX by ATV	3890	56.9
lost to ATV IX only	3890	56.9
lost to all IX	3890	56.9

Potential Interfering Stations Included in above Scenario 10

42A PA PITTSBURGH	BLCDDT	20060608AAB	LIC
43A MI DETROIT	BPEDT	20080620AAL	CP
43A NY BUFFALO	BLEDT	20030812AAJ	LIC
43A OH PORTSMOUTH	DTVPLN	DTVP1550	PLN
43A PA ERIE	USERRECORD01		APP

Percent new IX = 0.0000%

Result key: 14
 Scenario 11 Affected station 15 WPGH-TV
 Before Analysis

Results for: 43A PA PITTSBURGH BMPCDT 20021216AAS CP
 HAAT 303.0 m, ATV ERP 1000.0 kW

	POPULATION	AREA (sq km)
within Noise Limited Contour	3246666	25897.4
not affected by terrain losses	3097397	24040.1
lost to NTSC IX	0	0.0
lost to additional IX by ATV	3890	56.9
lost to ATV IX only	3890	56.9
lost to all IX	3890	56.9

Potential Interfering Stations Included in above Scenario 11

42A PA PITTSBURGH	BLCDDT	20060608AAB	LIC
43A MI DETROIT	BPEDT	20080620AAL	CP
43A NY BUFFALO	DTVPLN	DTVP1548	PLN
43A OH PORTSMOUTH	BLEDT	20040323ATV	LIC

After Analysis

Results for: 43A PA PITTSBURGH BMPCDT 20021216AAS CP
 HAAT 303.0 m, ATV ERP 1000.0 kW

	POPULATION	AREA (sq km)
--	------------	--------------

within Noise Limited Contour	3246666	25897.4
not affected by terrain losses	3097397	24040.1
lost to NTSC IX	0	0.0
lost to additional IX by ATV	3890	56.9
lost to ATV IX only	3890	56.9
lost to all IX	3890	56.9

Potential Interfering Stations Included in above Scenario 11

42A PA PITTSBURGH	BLCDDT	20060608AAB	LIC
43A MI DETROIT	BPEDT	20080620AAL	CP
43A NY BUFFALO	DTVPLN	DTVP1548	PLN
43A OH PORTSMOUTH	BLEDT	20040323ATV	LIC
43A PA ERIE	USERRECORD01		APP

Percent new IX = 0.0000%

Result key: 15
 Scenario 12 Affected station 15 WPGH-TV
 Before Analysis

Results for: 43A PA PITTSBURGH BMPCDDT 20021216AAS CP
 HAAT 303.0 m, ATV ERP 1000.0 kW

	POPULATION	AREA (sq km)
within Noise Limited Contour	3246666	25897.4
not affected by terrain losses	3097397	24040.1
lost to NTSC IX	0	0.0
lost to additional IX by ATV	3890	56.9
lost to ATV IX only	3890	56.9
lost to all IX	3890	56.9

Potential Interfering Stations Included in above Scenario 12

42A PA PITTSBURGH	BLCDDT	20060608AAB	LIC
43A MI DETROIT	BPEDT	20080620AAL	CP
43A NY BUFFALO	DTVPLN	DTVP1548	PLN
43A OH PORTSMOUTH	DTVPLN	DTVP1550	PLN

After Analysis

Results for: 43A PA PITTSBURGH BMPCDDT 20021216AAS CP
 HAAT 303.0 m, ATV ERP 1000.0 kW

	POPULATION	AREA (sq km)
within Noise Limited Contour	3246666	25897.4
not affected by terrain losses	3097397	24040.1
lost to NTSC IX	0	0.0
lost to additional IX by ATV	3890	56.9
lost to ATV IX only	3890	56.9
lost to all IX	3890	56.9

Potential Interfering Stations Included in above Scenario 12

42A PA PITTSBURGH	BLCDDT	20060608AAB	LIC
43A MI DETROIT	BPEDT	20080620AAL	CP
43A NY BUFFALO	DTVPLN	DTVP1548	PLN
43A OH PORTSMOUTH	DTVPLN	DTVP1550	PLN
43A PA ERIE	USERRECORD01		APP

Percent new IX = 0.0000%

Result key: 16
 Scenario 13 Affected station 15 WPGH-TV
 Before Analysis

Results for: 43A PA PITTSBURGH BMPCDDT 20021216AAS CP
 HAAT 303.0 m, ATV ERP 1000.0 kW

	POPULATION	AREA (sq km)
within Noise Limited Contour	3246666	25897.4
not affected by terrain losses	3097397	24040.1
lost to NTSC IX	0	0.0
lost to additional IX by ATV	1945	47.9

KHANNA & GULL, Inc. – Consulting Engineers

lost to ATV IX only	1945	47.9
lost to all IX	1945	47.9

Potential Interfering Stations Included in above Scenario 13

42A PA PITTSBURGH	DTVPLN	DTVP1515	PLN
43A MI DETROIT	BLEDT	20001117ABV	LIC
43A NY BUFFALO	BLEDT	20030812AAJ	LIC
43A OH PORTSMOUTH	BLEDT	20040323ATV	LIC

After Analysis

Results for: 43A PA PITTSBURGH BMPCDT 20021216AAS CP
 HAAT 303.0 m, ATV ERP 1000.0 kW

	POPULATION	AREA (sq km)
within Noise Limited Contour	3246666	25897.4
not affected by terrain losses	3097397	24040.1
lost to NTSC IX	0	0.0
lost to additional IX by ATV	1945	47.9
lost to ATV IX only	1945	47.9
lost to all IX	1945	47.9

Potential Interfering Stations Included in above Scenario 13

42A PA PITTSBURGH	DTVPLN	DTVP1515	PLN
43A MI DETROIT	BLEDT	20001117ABV	LIC
43A NY BUFFALO	BLEDT	20030812AAJ	LIC
43A OH PORTSMOUTH	BLEDT	20040323ATV	LIC
43A PA ERIE	USERRECORD01		APP

Percent new IX = 0.0000%

Result key: 17
 Scenario 14 Affected station 15 WPGH-TV
 Before Analysis

Results for: 43A PA PITTSBURGH BMPCDT 20021216AAS CP
 HAAT 303.0 m, ATV ERP 1000.0 kW

	POPULATION	AREA (sq km)
within Noise Limited Contour	3246666	25897.4
not affected by terrain losses	3097397	24040.1
lost to NTSC IX	0	0.0
lost to additional IX by ATV	1945	47.9
lost to ATV IX only	1945	47.9
lost to all IX	1945	47.9

Potential Interfering Stations Included in above Scenario 14

42A PA PITTSBURGH	DTVPLN	DTVP1515	PLN
43A MI DETROIT	BLEDT	20001117ABV	LIC
43A NY BUFFALO	BLEDT	20030812AAJ	LIC
43A OH PORTSMOUTH	DTVPLN	DTVP1550	PLN

After Analysis

Results for: 43A PA PITTSBURGH BMPCDT 20021216AAS CP
 HAAT 303.0 m, ATV ERP 1000.0 kW

	POPULATION	AREA (sq km)
within Noise Limited Contour	3246666	25897.4
not affected by terrain losses	3097397	24040.1
lost to NTSC IX	0	0.0
lost to additional IX by ATV	1945	47.9
lost to ATV IX only	1945	47.9
lost to all IX	1945	47.9

Potential Interfering Stations Included in above Scenario 14

42A PA PITTSBURGH	DTVPLN	DTVP1515	PLN
43A MI DETROIT	BLEDT	20001117ABV	LIC
43A NY BUFFALO	BLEDT	20030812AAJ	LIC
43A OH PORTSMOUTH	DTVPLN	DTVP1550	PLN

KHANNA & GUILL, Inc. – Consulting Engineers

43A PA ERIE USERRECORD01 APP

Percent new IX = 0.0000%

Result key: 18
Scenario 15 Affected station 15 WPGH-TV
Before Analysis

Results for: 43A PA PITTSBURGH	BMPCDT	20021216AAS	CP
HAAT 303.0 m, ATV ERP 1000.0 kW			
	POPULATION	AREA (sq km)	
within Noise Limited Contour	3246666	25897.4	
not affected by terrain losses	3097397	24040.1	
lost to NTSC IX	0	0.0	
lost to additional IX by ATV	1945	47.9	
lost to ATV IX only	1945	47.9	
lost to all IX	1945	47.9	

Potential Interfering Stations Included in above Scenario 15

42A	PA	PITTSBURGH	DTVPLN	DTVP1515	PLN
43A	MI	DETROIT	BLEDT	20001117ABV	LIC
43A	NY	BUFFALO	DTVPLN	DTVP1548	PLN
43A	OH	PORTSMOUTH	BLEDT	20040323ATV	LIC

After Analysis

Results for: 43A PA PITTSBURGH		BMPCDT	20021216AAS	CP
HAAT 303.0 m, ATV ERP 1000.0 kW				
	POPULATION	AREA (sq km)		
within Noise Limited Contour	3246666	25897.4		
not affected by terrain losses	3097397	24040.1		
lost to NTSC IX	0	0.0		
lost to additional IX by ATV	1945	47.9		
lost to ATV IX only	1945	47.9		
lost to all IX	1945	47.9		

Potential Interfering Stations Included in above Scenario 15

42A	PA	PITTSBURGH	DTVPLN	DTVP1515	PLN
43A	MI	DETROIT	BLEDT	20001117ABV	LIC
43A	NY	BUFFALO	DTVPLN	DTVP1548	PLN
43A	OH	PORTSMOUTH	BLEDT	20040323ATV	LIC
43A	PA	ERIE	USERRECORD01		APP

Percent new IX = 0.0000%

Result key: 19
Scenario 16 Affected station 15 WPGH-TV
Before Analysis

Results for: 43A PA PITTSBURGH		BMPCDT	20021216AAS	CP
HAAT 303.0 m, ATV ERP 1000.0 kW				
	POPULATION	AREA (sq km)		
within Noise Limited Contour	3246666	25897.4		
not affected by terrain losses	3097397	24040.1		
lost to NTSC IX	0	0.0		
lost to additional IX by ATV	1945	47.9		
lost to ATV IX only	1945	47.9		
lost to all IX	1945	47.9		

Potential Interfering Stations Included in above Scenario 16

42A	PA	PITTSBURGH	DTVPLN	DTVP1515	PLN
43A	MI	DETROIT	BLEDT	20001117ABV	LIC
43A	NY	BUFFALO	DTVPLN	DTVP1548	PLN
43A	OH	PORCUSHMOUTH	DTVPLN	DTVP1550	PLN

After Analysis

Results for: 43A PA PITTSBURGH BMPCDT 20021216AAS CP

HAAT 303.0 m, ATV ERP 1000.0 kW

	POPULATION	AREA (sq km)
within Noise Limited Contour	3246666	25897.4
not affected by terrain losses	3097397	24040.1
lost to NTSC IX	0	0.0
lost to additional IX by ATV	1945	47.9
lost to ATV IX only	1945	47.9
lost to all IX	1945	47.9

Potential Interfering Stations Included in above Scenario 16

42A PA PITTSBURGH	DTVPLN	DTVP1515	PLN
43A MI DETROIT	BLEDT	20001117ABV	LIC
43A NY BUFFALO	DTVPLN	DTVP1548	PLN
43A OH PORTSMOUTH	DTVPLN	DTVP1550	PLN
43A PA ERIE	USERRECORD01		APP

Percent new IX = 0.0000%

Result key: 20
 Scenario 17 Affected station 15 WPGH-TV
 Before Analysis

Results for: 43A PA PITTSBURGH BMPCDT 20021216AAS CP
 HAAT 303.0 m, ATV ERP 1000.0 kW

	POPULATION	AREA (sq km)
within Noise Limited Contour	3246666	25897.4
not affected by terrain losses	3097397	24040.1
lost to NTSC IX	0	0.0
lost to additional IX by ATV	1945	47.9
lost to ATV IX only	1945	47.9
lost to all IX	1945	47.9

Potential Interfering Stations Included in above Scenario 17

42A PA PITTSBURGH	DTVPLN	DTVP1515	PLN
43A MI DETROIT	DTVPLN	DTVP1541	PLN
43A NY BUFFALO	BLEDT	20030812AAJ	LIC
43A OH PORTSMOUTH	BLEDT	20040323ATV	LIC

After Analysis

Results for: 43A PA PITTSBURGH BMPCDT 20021216AAS CP
 HAAT 303.0 m, ATV ERP 1000.0 kW

	POPULATION	AREA (sq km)
within Noise Limited Contour	3246666	25897.4
not affected by terrain losses	3097397	24040.1
lost to NTSC IX	0	0.0
lost to additional IX by ATV	1945	47.9
lost to ATV IX only	1945	47.9
lost to all IX	1945	47.9

Potential Interfering Stations Included in above Scenario 17

42A PA PITTSBURGH	DTVPLN	DTVP1515	PLN
43A MI DETROIT	DTVPLN	DTVP1541	PLN
43A NY BUFFALO	BLEDT	20030812AAJ	LIC
43A OH PORTSMOUTH	BLEDT	20040323ATV	LIC
43A PA ERIE	USERRECORD01		APP

Percent new IX = 0.0000%

Result key: 21
 Scenario 18 Affected station 15 WPGH-TV
 Before Analysis

Results for: 43A PA PITTSBURGH BMPCDT 20021216AAS CP
 HAAT 303.0 m, ATV ERP 1000.0 kW

	POPULATION	AREA (sq km)
within Noise Limited Contour	3246666	25897.4
not affected by terrain losses	3097397	24040.1

lost to NTSC IX	0	0.0
lost to additional IX by ATV	1945	47.9
lost to ATV IX only	1945	47.9
lost to all IX	1945	47.9

Potential Interfering Stations Included in above Scenario 18

42A PA PITTSBURGH	DTVPLN	DTVP1515	PLN
43A MI DETROIT	DTVPLN	DTVP1541	PLN
43A NY BUFFALO	BLEDT	20030812AAJ	LIC
43A OH PORTSMOUTH	DTVPLN	DTVP1550	PLN

After Analysis

Results for: 43A PA PITTSBURGH BMPCDT 20021216AAS CP
 HAAT 303.0 m, ATV ERP 1000.0 kW

	POPULATION	AREA (sq km)
within Noise Limited Contour	3246666	25897.4
not affected by terrain losses	3097397	24040.1
lost to NTSC IX	0	0.0
lost to additional IX by ATV	1945	47.9
lost to ATV IX only	1945	47.9
lost to all IX	1945	47.9

Potential Interfering Stations Included in above Scenario 18

42A PA PITTSBURGH	DTVPLN	DTVP1515	PLN
43A MI DETROIT	DTVPLN	DTVP1541	PLN
43A NY BUFFALO	BLEDT	20030812AAJ	LIC
43A OH PORTSMOUTH	DTVPLN	DTVP1550	PLN
43A PA ERIE	USERRECORD01		APP

Percent new IX = 0.0000%

Result key: 22
 Scenario 19 Affected station 15 WPGH-TV
 Before Analysis

Results for: 43A PA PITTSBURGH BMPCDT 20021216AAS CP
 HAAT 303.0 m, ATV ERP 1000.0 kW

	POPULATION	AREA (sq km)
within Noise Limited Contour	3246666	25897.4
not affected by terrain losses	3097397	24040.1
lost to NTSC IX	0	0.0
lost to additional IX by ATV	1945	47.9
lost to ATV IX only	1945	47.9
lost to all IX	1945	47.9

Potential Interfering Stations Included in above Scenario 19

42A PA PITTSBURGH	DTVPLN	DTVP1515	PLN
43A MI DETROIT	DTVPLN	DTVP1541	PLN
43A NY BUFFALO	DTVPLN	DTVP1548	PLN
43A OH PORTSMOUTH	BLEDT	20040323ATV	LIC

After Analysis

Results for: 43A PA PITTSBURGH BMPCDT 20021216AAS CP
 HAAT 303.0 m, ATV ERP 1000.0 kW

	POPULATION	AREA (sq km)
within Noise Limited Contour	3246666	25897.4
not affected by terrain losses	3097397	24040.1
lost to NTSC IX	0	0.0
lost to additional IX by ATV	1945	47.9
lost to ATV IX only	1945	47.9
lost to all IX	1945	47.9

Potential Interfering Stations Included in above Scenario 19

42A PA PITTSBURGH	DTVPLN	DTVP1515	PLN
43A MI DETROIT	DTVPLN	DTVP1541	PLN

KHANNA & GULL, Inc. – Consulting Engineers

43A NY BUFFALO	DTVPLN	DTVP1548	PLN
43A OH PORTSMOUTH	BLEDT	20040323ATV	LIC
43A PA ERIE	USERRECORD01		APP

Percent new IX = 0.0000%

Result key: 23
 Scenario 20 Affected station 15 WPGH-TV
 Before Analysis

Results for: 43A PA PITTSBURGH BMPCDT 20021216AAS CP
 HAAT 303.0 m, ATV ERP 1000.0 kW

	POPULATION	AREA (sq km)
within Noise Limited Contour	3246666	25897.4
not affected by terrain losses	3097397	24040.1
lost to NTSC IX	0	0.0
lost to additional IX by ATV	1945	47.9
lost to ATV IX only	1945	47.9
lost to all IX	1945	47.9

Potential Interfering Stations Included in above Scenario 20

42A PA PITTSBURGH	DTVPLN	DTVP1515	PLN
43A MI DETROIT	DTVPLN	DTVP1541	PLN
43A NY BUFFALO	DTVPLN	DTVP1548	PLN
43A OH PORTSMOUTH	DTVPLN	DTVP1550	PLN

After Analysis

Results for: 43A PA PITTSBURGH BMPCDT 20021216AAS CP
 HAAT 303.0 m, ATV ERP 1000.0 kW

	POPULATION	AREA (sq km)
within Noise Limited Contour	3246666	25897.4
not affected by terrain losses	3097397	24040.1
lost to NTSC IX	0	0.0
lost to additional IX by ATV	1945	47.9
lost to ATV IX only	1945	47.9
lost to all IX	1945	47.9

Potential Interfering Stations Included in above Scenario 20

42A PA PITTSBURGH	DTVPLN	DTVP1515	PLN
43A MI DETROIT	DTVPLN	DTVP1541	PLN
43A NY BUFFALO	DTVPLN	DTVP1548	PLN
43A OH PORTSMOUTH	DTVPLN	DTVP1550	PLN
43A PA ERIE	USERRECORD01		APP

Percent new IX = 0.0000%

Result key: 24
 Scenario 21 Affected station 15 WPGH-TV
 Before Analysis

Results for: 43A PA PITTSBURGH BMPCDT 20021216AAS CP
 HAAT 303.0 m, ATV ERP 1000.0 kW

	POPULATION	AREA (sq km)
within Noise Limited Contour	3246666	25897.4
not affected by terrain losses	3097397	24040.1
lost to NTSC IX	0	0.0
lost to additional IX by ATV	3890	56.9
lost to ATV IX only	3890	56.9
lost to all IX	3890	56.9

Potential Interfering Stations Included in above Scenario 21

42A PA PITTSBURGH	DTVPLN	DTVP1515	PLN
43A MI DETROIT	BPEDT	20080620AAL	CP
43A NY BUFFALO	BLEDT	20030812AAJ	LIC
43A OH PORTSMOUTH	BLEDT	20040323ATV	LIC

After Analysis

Results for: 43A PA PITTSBURGH BMPCDT 20021216AAS CP
 HAAT 303.0 m, ATV ERP 1000.0 kW

	POPULATION	AREA (sq km)
within Noise Limited Contour	3246666	25897.4
not affected by terrain losses	3097397	24040.1
lost to NTSC IX	0	0.0
lost to additional IX by ATV	3890	56.9
lost to ATV IX only	3890	56.9
lost to all IX	3890	56.9

Potential Interfering Stations Included in above Scenario 21

42A PA PITTSBURGH	DTVPLN	DTVP1515	PLN
43A MI DETROIT	BPEDT	20080620AAL	CP
43A NY BUFFALO	BLEDT	20030812AAJ	LIC
43A OH PORTSMOUTH	BLEDT	20040323ATV	LIC
43A PA ERIE	USERRECORD01		APP

Percent new IX = 0.0000%

Result key: 25
 Scenario 22 Affected station 15 WPGH-TV
 Before Analysis

Results for: 43A PA PITTSBURGH BMPCDT 20021216AAS CP
 HAAT 303.0 m, ATV ERP 1000.0 kW

	POPULATION	AREA (sq km)
within Noise Limited Contour	3246666	25897.4
not affected by terrain losses	3097397	24040.1
lost to NTSC IX	0	0.0
lost to additional IX by ATV	3890	56.9
lost to ATV IX only	3890	56.9
lost to all IX	3890	56.9

Potential Interfering Stations Included in above Scenario 22

42A PA PITTSBURGH	DTVPLN	DTVP1515	PLN
43A MI DETROIT	BPEDT	20080620AAL	CP
43A NY BUFFALO	BLEDT	20030812AAJ	LIC
43A OH PORTSMOUTH	DTVPLN	DTVP1550	PLN

After Analysis

Results for: 43A PA PITTSBURGH BMPCDT 20021216AAS CP
 HAAT 303.0 m, ATV ERP 1000.0 kW

	POPULATION	AREA (sq km)
within Noise Limited Contour	3246666	25897.4
not affected by terrain losses	3097397	24040.1
lost to NTSC IX	0	0.0
lost to additional IX by ATV	3890	56.9
lost to ATV IX only	3890	56.9
lost to all IX	3890	56.9

Potential Interfering Stations Included in above Scenario 22

42A PA PITTSBURGH	DTVPLN	DTVP1515	PLN
43A MI DETROIT	BPEDT	20080620AAL	CP
43A NY BUFFALO	BLEDT	20030812AAJ	LIC
43A OH PORTSMOUTH	DTVPLN	DTVP1550	PLN
43A PA ERIE	USERRECORD01		APP

Percent new IX = 0.0000%

Result key: 26
 Scenario 23 Affected station 15 WPGH-TV
 Before Analysis

Results for: 43A PA PITTSBURGH BMPCDT 20021216AAS CP
 HAAT 303.0 m, ATV ERP 1000.0 kW

	POPULATION	AREA (sq km)
--	------------	--------------

within Noise Limited Contour	3246666	25897.4
not affected by terrain losses	3097397	24040.1
lost to NTSC IX	0	0.0
lost to additional IX by ATV	3890	56.9
lost to ATV IX only	3890	56.9
lost to all IX	3890	56.9

Potential Interfering Stations Included in above Scenario 23

42A PA PITTSBURGH	DTVPLN	DTVP1515	PLN
43A MI DETROIT	BPEDT	20080620AAL	CP
43A NY BUFFALO	DTVPLN	DTVP1548	PLN
43A OH PORTSMOUTH	BLEDT	20040323ATV	LIC

After Analysis

Results for: 43A PA PITTSBURGH BMPCDT 20021216AAS CP
 HAAT 303.0 m, ATV ERP 1000.0 kW

	POPULATION	AREA (sq km)
within Noise Limited Contour	3246666	25897.4
not affected by terrain losses	3097397	24040.1
lost to NTSC IX	0	0.0
lost to additional IX by ATV	3890	56.9
lost to ATV IX only	3890	56.9
lost to all IX	3890	56.9

Potential Interfering Stations Included in above Scenario 23

42A PA PITTSBURGH	DTVPLN	DTVP1515	PLN
43A MI DETROIT	BPEDT	20080620AAL	CP
43A NY BUFFALO	DTVPLN	DTVP1548	PLN
43A OH PORTSMOUTH	BLEDT	20040323ATV	LIC
43A PA ERIE	USERRECORD01		APP

Percent new IX = 0.0000%

Result key: 27
 Scenario 24 Affected station 15 WPGH-TV
 Before Analysis

Results for: 43A PA PITTSBURGH BMPCDT 20021216AAS CP
 HAAT 303.0 m, ATV ERP 1000.0 kW

	POPULATION	AREA (sq km)
within Noise Limited Contour	3246666	25897.4
not affected by terrain losses	3097397	24040.1
lost to NTSC IX	0	0.0
lost to additional IX by ATV	3890	56.9
lost to ATV IX only	3890	56.9
lost to all IX	3890	56.9

Potential Interfering Stations Included in above Scenario 24

42A PA PITTSBURGH	DTVPLN	DTVP1515	PLN
43A MI DETROIT	BPEDT	20080620AAL	CP
43A NY BUFFALO	DTVPLN	DTVP1548	PLN
43A OH PORTSMOUTH	DTVPLN	DTVP1550	PLN

After Analysis

Results for: 43A PA PITTSBURGH BMPCDT 20021216AAS CP
 HAAT 303.0 m, ATV ERP 1000.0 kW

	POPULATION	AREA (sq km)
within Noise Limited Contour	3246666	25897.4
not affected by terrain losses	3097397	24040.1
lost to NTSC IX	0	0.0
lost to additional IX by ATV	3890	56.9
lost to ATV IX only	3890	56.9
lost to all IX	3890	56.9

Potential Interfering Stations Included in above Scenario 24

KHANNA & GULL, Inc. – Consulting Engineers

42A PA PITTSBURGH	DTVPLN	DTVP1515	PLN
43A MI DETROIT	BPEDT	20080620AAL	CP
43A NY BUFFALO	DTVPLN	DTVP1548	PLN
43A OH PORTSMOUTH	DTVPLN	DTVP1550	PLN
43A PA ERIE	USERRECORD01		APP

Percent new IX = 0.0000%

Worst case new IX 0.0000% Scenario 1

#####

Analysis of Interference to Affected Station 16

Analysis of current record

Channel	Call	City/State	Application	Ref. No.
43	WPGH-TV	PITTSBURGH PA	BLCDDT	-20021216AAT

Stations Potentially Affecting This Station

Chan	Call	City/State	Dist(km)	Status	Application	Ref. No.
42	WGGN-TV	SANDUSKY OH	215.7	CP MOD	BMPCDT	-20081024AER
42	WPMY	PITTSBURGH PA	0.0	LIC	BLCDDT	-20060608AAB
42	WPMY	PITTSBURGH PA	0.0	PLN	DTVPLN	-DTVP1515
43	WTVS	DETROIT MI	341.6	LIC	BLEDT	-20001117ABV
43	WTVS	DETROIT MI	341.6	PLN	DTVPLN	-DTVP1541
43	WTVS	DETROIT MI	341.6	CP	BPEDT	-20080620AAL
43	WNED-TV	BUFFALO NY	295.7	LIC	BLEDT	-20030812AAJ
43	WNED-TV	BUFFALO NY	295.7	PLN	DTVPLN	-DTVP1548
43	WPBO	PORTSMOUTH OH	324.9	LIC	BLEDT	-20040323ATV
43	WPBO	PORTSMOUTH OH	324.9	PLN	DTVPLN	-DTVP1550
44	WWPB	HAGERSTOWN MD	196.8	LIC	BLEDT	-20031029ACE
44	WWPB	HAGERSTOWN MD	196.8	PLN	DTVPLN	-DTVP1576
44	WWPB	HAGERSTOWN MD	196.8	CP	BPEDT	-20080620ANI
43	WLEP-LD	ERIE PA	171.7	APP	USERRECORD-01	

Total scenarios = 24

Result key: 28

Scenario 1 Affected station 16 WPGH-TV
Before Analysis

Results for: 43A PA PITTSBURGH BLCDDT 20021216AAT LIC
HAAT 303.0 m, ATV ERP 1000.0 kW

	POPULATION	AREA (sq km)
within Noise Limited Contour	3246666	25897.4
not affected by terrain losses	3097397	24040.1
lost to NTSC IX	0	0.0
lost to additional IX by ATV	1945	47.9
lost to ATV IX only	1945	47.9
lost to all IX	1945	47.9

Potential Interfering Stations Included in above Scenario 1

42A PA PITTSBURGH	BLCDDT	20060608AAB	LIC
43A MI DETROIT	BLEDT	20001117ABV	LIC
43A NY BUFFALO	BLEDT	20030812AAJ	LIC
43A OH PORTSMOUTH	BLEDT	20040323ATV	LIC

After Analysis

Results for: 43A PA PITTSBURGH BLCDDT 20021216AAT LIC
HAAT 303.0 m, ATV ERP 1000.0 kW

	POPULATION	AREA (sq km)
within Noise Limited Contour	3246666	25897.4
not affected by terrain losses	3097397	24040.1
lost to NTSC IX	0	0.0
lost to additional IX by ATV	1945	47.9

lost to ATV IX only	1945	47.9
lost to all IX	1945	47.9

Potential Interfering Stations Included in above Scenario 1

42A PA PITTSBURGH	BLCDT	20060608AAB	LIC
43A MI DETROIT	BLEDT	20001117ABV	LIC
43A NY BUFFALO	BLEDT	20030812AAJ	LIC
43A OH PORTSMOUTH	BLEDT	20040323ATV	LIC
43A PA ERIE	USERRECORD01		APP

Percent new IX = 0.0000%

Result key: 29
 Scenario 2 Affected station 16 WPGH-TV
 Before Analysis

Results for: 43A PA PITTSBURGH BLCDT 20021216AAT LIC
 HAAT 303.0 m, ATV ERP 1000.0 kW

	POPULATION	AREA (sq km)
within Noise Limited Contour	3246666	25897.4
not affected by terrain losses	3097397	24040.1
lost to NTSC IX	0	0.0
lost to additional IX by ATV	1945	47.9
lost to ATV IX only	1945	47.9
lost to all IX	1945	47.9

Potential Interfering Stations Included in above Scenario 2

42A PA PITTSBURGH	BLCDT	20060608AAB	LIC
43A MI DETROIT	BLEDT	20001117ABV	LIC
43A NY BUFFALO	BLEDT	20030812AAJ	LIC
43A OH PORTSMOUTH	DTVPLN	DTVP1550	PLN

After Analysis

Results for: 43A PA PITTSBURGH BLCDT 20021216AAT LIC
 HAAT 303.0 m, ATV ERP 1000.0 kW

	POPULATION	AREA (sq km)
within Noise Limited Contour	3246666	25897.4
not affected by terrain losses	3097397	24040.1
lost to NTSC IX	0	0.0
lost to additional IX by ATV	1945	47.9
lost to ATV IX only	1945	47.9
lost to all IX	1945	47.9

Potential Interfering Stations Included in above Scenario 2

42A PA PITTSBURGH	BLCDT	20060608AAB	LIC
43A MI DETROIT	BLEDT	20001117ABV	LIC
43A NY BUFFALO	BLEDT	20030812AAJ	LIC
43A OH PORTSMOUTH	DTVPLN	DTVP1550	PLN
43A PA ERIE	USERRECORD01		APP

Percent new IX = 0.0000%

Result key: 30
 Scenario 3 Affected station 16 WPGH-TV
 Before Analysis

Results for: 43A PA PITTSBURGH BLCDT 20021216AAT LIC
 HAAT 303.0 m, ATV ERP 1000.0 kW

	POPULATION	AREA (sq km)
within Noise Limited Contour	3246666	25897.4
not affected by terrain losses	3097397	24040.1
lost to NTSC IX	0	0.0
lost to additional IX by ATV	1945	47.9
lost to ATV IX only	1945	47.9
lost to all IX	1945	47.9

Potential Interfering Stations Included in above Scenario 3

42A PA PITTSBURGH	BLCDT	20060608AAB	LIC
43A MI DETROIT	BLEDT	20001117ABV	LIC
43A NY BUFFALO	DTVPLN	DTVP1548	PLN
43A OH PORTSMOUTH	BLEDT	20040323ATV	LIC

After Analysis

Results for: 43A PA PITTSBURGH BLCDT 20021216AAT LIC
 HAAT 303.0 m, ATV ERP 1000.0 kW

	POPULATION	AREA (sq km)
within Noise Limited Contour	3246666	25897.4
not affected by terrain losses	3097397	24040.1
lost to NTSC IX	0	0.0
lost to additional IX by ATV	1945	47.9
lost to ATV IX only	1945	47.9
lost to all IX	1945	47.9

Potential Interfering Stations Included in above Scenario 3

42A PA PITTSBURGH	BLCDT	20060608AAB	LIC
43A MI DETROIT	BLEDT	20001117ABV	LIC
43A NY BUFFALO	DTVPLN	DTVP1548	PLN
43A OH PORTSMOUTH	BLEDT	20040323ATV	LIC
43A PA ERIE	USERRECORD01		APP

Percent new IX = 0.0000%

Result key: 31
 Scenario 4 Affected station 16 WPGH-TV
 Before Analysis

Results for: 43A PA PITTSBURGH BLCDT 20021216AAT LIC
 HAAT 303.0 m, ATV ERP 1000.0 kW

	POPULATION	AREA (sq km)
within Noise Limited Contour	3246666	25897.4
not affected by terrain losses	3097397	24040.1
lost to NTSC IX	0	0.0
lost to additional IX by ATV	1945	47.9
lost to ATV IX only	1945	47.9
lost to all IX	1945	47.9

Potential Interfering Stations Included in above Scenario 4

42A PA PITTSBURGH	BLCDT	20060608AAB	LIC
43A MI DETROIT	BLEDT	20001117ABV	LIC
43A NY BUFFALO	DTVPLN	DTVP1548	PLN
43A OH PORTSMOUTH	DTVPLN	DTVP1550	PLN

After Analysis

Results for: 43A PA PITTSBURGH BLCDT 20021216AAT LIC
 HAAT 303.0 m, ATV ERP 1000.0 kW

	POPULATION	AREA (sq km)
within Noise Limited Contour	3246666	25897.4
not affected by terrain losses	3097397	24040.1
lost to NTSC IX	0	0.0
lost to additional IX by ATV	1945	47.9
lost to ATV IX only	1945	47.9
lost to all IX	1945	47.9

Potential Interfering Stations Included in above Scenario 4

42A PA PITTSBURGH	BLCDT	20060608AAB	LIC
43A MI DETROIT	BLEDT	20001117ABV	LIC
43A NY BUFFALO	DTVPLN	DTVP1548	PLN
43A OH PORTSMOUTH	DTVPLN	DTVP1550	PLN
43A PA ERIE	USERRECORD01		APP

Percent new IX = 0.0000%

Result key: 32
 Scenario 5 Affected station 16 WPGH-TV
 Before Analysis

Results for: 43A PA PITTSBURGH BLC DT 20021216AAT LIC
 HAAT 303.0 m, ATV ERP 1000.0 kW

	POPULATION	AREA (sq km)
within Noise Limited Contour	3246666	25897.4
not affected by terrain losses	3097397	24040.1
lost to NTSC IX	0	0.0
lost to additional IX by ATV	1945	47.9
lost to ATV IX only	1945	47.9
lost to all IX	1945	47.9

Potential Interfering Stations Included in above Scenario 5

42A PA PITTSBURGH	BLC DT	20060608AAB	LIC
43A MI DETROIT	DTVPLN	DTVP1541	PLN
43A NY BUFFALO	BLED T	20030812AAJ	LIC
43A OH PORTSMOUTH	BLED T	20040323ATV	LIC

After Analysis

Results for: 43A PA PITTSBURGH BLC DT 20021216AAT LIC
 HAAT 303.0 m, ATV ERP 1000.0 kW

	POPULATION	AREA (sq km)
within Noise Limited Contour	3246666	25897.4
not affected by terrain losses	3097397	24040.1
lost to NTSC IX	0	0.0
lost to additional IX by ATV	1945	47.9
lost to ATV IX only	1945	47.9
lost to all IX	1945	47.9

Potential Interfering Stations Included in above Scenario 5

42A PA PITTSBURGH	BLC DT	20060608AAB	LIC
43A MI DETROIT	DTVPLN	DTVP1541	PLN
43A NY BUFFALO	BLED T	20030812AAJ	LIC
43A OH PORTSMOUTH	BLED T	20040323ATV	LIC
43A PA ERIE	USERRECORD01		APP

Percent new IX = 0.0000%

Result key: 33
 Scenario 6 Affected station 16 WPGH-TV
 Before Analysis

Results for: 43A PA PITTSBURGH BLC DT 20021216AAT LIC
 HAAT 303.0 m, ATV ERP 1000.0 kW

	POPULATION	AREA (sq km)
within Noise Limited Contour	3246666	25897.4
not affected by terrain losses	3097397	24040.1
lost to NTSC IX	0	0.0
lost to additional IX by ATV	1945	47.9
lost to ATV IX only	1945	47.9
lost to all IX	1945	47.9

Potential Interfering Stations Included in above Scenario 6

42A PA PITTSBURGH	BLC DT	20060608AAB	LIC
43A MI DETROIT	DTVPLN	DTVP1541	PLN
43A NY BUFFALO	BLED T	20030812AAJ	LIC
43A OH PORTSMOUTH	DTVPLN	DTVP1550	PLN

After Analysis

Results for: 43A PA PITTSBURGH BLC DT 20021216AAT LIC
 HAAT 303.0 m, ATV ERP 1000.0 kW

	POPULATION	AREA (sq km)
within Noise Limited Contour	3246666	25897.4
not affected by terrain losses	3097397	24040.1

lost to NTSC IX	0	0.0
lost to additional IX by ATV	1945	47.9
lost to ATV IX only	1945	47.9
lost to all IX	1945	47.9

Potential Interfering Stations Included in above Scenario 6

42A PA PITTSBURGH	BLCDT	20060608AAB	LIC
43A MI DETROIT	DTVPLN	DTVP1541	PLN
43A NY BUFFALO	BLEDT	20030812AAJ	LIC
43A OH PORTSMOUTH	DTVPLN	DTVP1550	PLN
43A PA ERIE	USERRECORD01		APP

Percent new IX = 0.0000%

Result key: 34
 Scenario 7 Affected station 16 WPGH-TV
 Before Analysis

Results for: 43A PA PITTSBURGH BLCDT 20021216AAT LIC
 HAAT 303.0 m, ATV ERP 1000.0 kW

	POPULATION	AREA (sq km)
within Noise Limited Contour	3246666	25897.4
not affected by terrain losses	3097397	24040.1
lost to NTSC IX	0	0.0
lost to additional IX by ATV	1945	47.9
lost to ATV IX only	1945	47.9
lost to all IX	1945	47.9

Potential Interfering Stations Included in above Scenario 7

42A PA PITTSBURGH	BLCDT	20060608AAB	LIC
43A MI DETROIT	DTVPLN	DTVP1541	PLN
43A NY BUFFALO	DTVPLN	DTVP1548	PLN
43A OH PORTSMOUTH	BLEDT	20040323ATV	LIC

After Analysis

Results for: 43A PA PITTSBURGH BLCDT 20021216AAT LIC
 HAAT 303.0 m, ATV ERP 1000.0 kW

	POPULATION	AREA (sq km)
within Noise Limited Contour	3246666	25897.4
not affected by terrain losses	3097397	24040.1
lost to NTSC IX	0	0.0
lost to additional IX by ATV	1945	47.9
lost to ATV IX only	1945	47.9
lost to all IX	1945	47.9

Potential Interfering Stations Included in above Scenario 7

42A PA PITTSBURGH	BLCDT	20060608AAB	LIC
43A MI DETROIT	DTVPLN	DTVP1541	PLN
43A NY BUFFALO	DTVPLN	DTVP1548	PLN
43A OH PORTSMOUTH	BLEDT	20040323ATV	LIC
43A PA ERIE	USERRECORD01		APP

Percent new IX = 0.0000%

Result key: 35
 Scenario 8 Affected station 16 WPGH-TV
 Before Analysis

Results for: 43A PA PITTSBURGH BLCDT 20021216AAT LIC
 HAAT 303.0 m, ATV ERP 1000.0 kW

	POPULATION	AREA (sq km)
within Noise Limited Contour	3246666	25897.4
not affected by terrain losses	3097397	24040.1
lost to NTSC IX	0	0.0
lost to additional IX by ATV	1945	47.9
lost to ATV IX only	1945	47.9
lost to all IX	1945	47.9

Potential Interfering Stations Included in above Scenario 8

42A PA PITTSBURGH	BLC DT	20060608AAB	LIC
43A MI DETROIT	DTVPLN	DTVP1541	PLN
43A NY BUFFALO	DTVPLN	DTVP1548	PLN
43A OH PORTSMOUTH	DTVPLN	DTVP1550	PLN

After Analysis

Results for: 43A PA PITTSBURGH BLC DT 20021216AAT LIC
HAAT 303.0 m, ATV ERP 1000.0 kW

	POPULATION	AREA (sq km)
within Noise Limited Contour	3246666	25897.4
not affected by terrain losses	3097397	24040.1
lost to NTSC IX	0	0.0
lost to additional IX by ATV	1945	47.9
lost to ATV IX only	1945	47.9
lost to all IX	1945	47.9

Potential Interfering Stations Included in above Scenario 8

42A PA PITTSBURGH	BLC DT	20060608AAB	LIC
43A MI DETROIT	DTVPLN	DTVP1541	PLN
43A NY BUFFALO	DTVPLN	DTVP1548	PLN
43A OH PORTSMOUTH	DTVPLN	DTVP1550	PLN
43A PA ERIE	USERRECORD01		APP

Percent new IX = 0.0000%

Result key: 36
Scenario 9 Affected station 16 WPGH-TV
Before Analysis

Results for: 43A PA PITTSBURGH BLC DT 20021216AAT LIC
HAAT 303.0 m, ATV ERP 1000.0 kW

	POPULATION	AREA (sq km)
within Noise Limited Contour	3246666	25897.4
not affected by terrain losses	3097397	24040.1
lost to NTSC IX	0	0.0
lost to additional IX by ATV	3890	56.9
lost to ATV IX only	3890	56.9
lost to all IX	3890	56.9

Potential Interfering Stations Included in above Scenario 9

42A PA PITTSBURGH	BLC DT	20060608AAB	LIC
43A MI DETROIT	BPEDT	20080620AAL	CP
43A NY BUFFALO	BLEDT	20030812AAJ	LIC
43A OH PORTSMOUTH	BLEDT	20040323ATV	LIC

After Analysis

Results for: 43A PA PITTSBURGH BLC DT 20021216AAT LIC
HAAT 303.0 m, ATV ERP 1000.0 kW

	POPULATION	AREA (sq km)
within Noise Limited Contour	3246666	25897.4
not affected by terrain losses	3097397	24040.1
lost to NTSC IX	0	0.0
lost to additional IX by ATV	3890	56.9
lost to ATV IX only	3890	56.9
lost to all IX	3890	56.9

Potential Interfering Stations Included in above Scenario 9

42A PA PITTSBURGH	BLC DT	20060608AAB	LIC
43A MI DETROIT	BPEDT	20080620AAL	CP
43A NY BUFFALO	BLEDT	20030812AAJ	LIC
43A OH PORTSMOUTH	BLEDT	20040323ATV	LIC
43A PA ERIE	USERRECORD01		APP

Percent new IX = 0.0000%

Result key: 37
 Scenario 10 Affected station 16 WPGH-TV
 Before Analysis

Results for: 43A PA PITTSBURGH BLCDT 20021216AAT LIC
 HAAT 303.0 m, ATV ERP 1000.0 kW

	POPULATION	AREA (sq km)
within Noise Limited Contour	3246666	25897.4
not affected by terrain losses	3097397	24040.1
lost to NTSC IX	0	0.0
lost to additional IX by ATV	3890	56.9
lost to ATV IX only	3890	56.9
lost to all IX	3890	56.9

Potential Interfering Stations Included in above Scenario 10

42A PA PITTSBURGH	BLCDT	20060608AAB	LIC
43A MI DETROIT	BPEDT	20080620AAL	CP
43A NY BUFFALO	BLEDT	20030812AAJ	LIC
43A OH PORTSMOUTH	DTVPLN	DTVP1550	PLN

After Analysis

Results for: 43A PA PITTSBURGH BLCDT 20021216AAT LIC
 HAAT 303.0 m, ATV ERP 1000.0 kW

	POPULATION	AREA (sq km)
within Noise Limited Contour	3246666	25897.4
not affected by terrain losses	3097397	24040.1
lost to NTSC IX	0	0.0
lost to additional IX by ATV	3890	56.9
lost to ATV IX only	3890	56.9
lost to all IX	3890	56.9

Potential Interfering Stations Included in above Scenario 10

42A PA PITTSBURGH	BLCDT	20060608AAB	LIC
43A MI DETROIT	BPEDT	20080620AAL	CP
43A NY BUFFALO	BLEDT	20030812AAJ	LIC
43A OH PORTSMOUTH	DTVPLN	DTVP1550	PLN
43A PA ERIE	USERRECORD01		APP

Percent new IX = 0.0000%

Result key: 38
 Scenario 11 Affected station 16 WPGH-TV
 Before Analysis

Results for: 43A PA PITTSBURGH BLCDT 20021216AAT LIC
 HAAT 303.0 m, ATV ERP 1000.0 kW

	POPULATION	AREA (sq km)
within Noise Limited Contour	3246666	25897.4
not affected by terrain losses	3097397	24040.1
lost to NTSC IX	0	0.0
lost to additional IX by ATV	3890	56.9
lost to ATV IX only	3890	56.9
lost to all IX	3890	56.9

Potential Interfering Stations Included in above Scenario 11

42A PA PITTSBURGH	BLCDT	20060608AAB	LIC
43A MI DETROIT	BPEDT	20080620AAL	CP
43A NY BUFFALO	DTVPLN	DTVP1548	PLN
43A OH PORTSMOUTH	BLEDT	20040323ATV	LIC

After Analysis

Results for: 43A PA PITTSBURGH BLCDT 20021216AAT LIC
 HAAT 303.0 m, ATV ERP 1000.0 kW

	POPULATION	AREA (sq km)
--	------------	--------------

within Noise Limited Contour	3246666	25897.4
not affected by terrain losses	3097397	24040.1
lost to NTSC IX	0	0.0
lost to additional IX by ATV	3890	56.9
lost to ATV IX only	3890	56.9
lost to all IX	3890	56.9

Potential Interfering Stations Included in above Scenario 11

42A PA PITTSBURGH	BLCDDT	20060608AAB	LIC
43A MI DETROIT	BPEDT	20080620AAL	CP
43A NY BUFFALO	DTVPLN	DTVP1548	PLN
43A OH PORTSMOUTH	BLEDT	20040323ATV	LIC
43A PA ERIE	USERRECORD01		APP

Percent new IX = 0.0000%

Result key: 39
 Scenario 12 Affected station 16 WPGH-TV
 Before Analysis

Results for: 43A PA PITTSBURGH BLCDDT 20021216AAT LIC
 HAAT 303.0 m, ATV ERP 1000.0 kW

	POPULATION	AREA (sq km)
within Noise Limited Contour	3246666	25897.4
not affected by terrain losses	3097397	24040.1
lost to NTSC IX	0	0.0
lost to additional IX by ATV	3890	56.9
lost to ATV IX only	3890	56.9
lost to all IX	3890	56.9

Potential Interfering Stations Included in above Scenario 12

42A PA PITTSBURGH	BLCDDT	20060608AAB	LIC
43A MI DETROIT	BPEDT	20080620AAL	CP
43A NY BUFFALO	DTVPLN	DTVP1548	PLN
43A OH PORTSMOUTH	DTVPLN	DTVP1550	PLN

After Analysis

Results for: 43A PA PITTSBURGH BLCDDT 20021216AAT LIC
 HAAT 303.0 m, ATV ERP 1000.0 kW

	POPULATION	AREA (sq km)
within Noise Limited Contour	3246666	25897.4
not affected by terrain losses	3097397	24040.1
lost to NTSC IX	0	0.0
lost to additional IX by ATV	3890	56.9
lost to ATV IX only	3890	56.9
lost to all IX	3890	56.9

Potential Interfering Stations Included in above Scenario 12

42A PA PITTSBURGH	BLCDDT	20060608AAB	LIC
43A MI DETROIT	BPEDT	20080620AAL	CP
43A NY BUFFALO	DTVPLN	DTVP1548	PLN
43A OH PORTSMOUTH	DTVPLN	DTVP1550	PLN
43A PA ERIE	USERRECORD01		APP

Percent new IX = 0.0000%

Result key: 40
 Scenario 13 Affected station 16 WPGH-TV
 Before Analysis

Results for: 43A PA PITTSBURGH BLCDDT 20021216AAT LIC
 HAAT 303.0 m, ATV ERP 1000.0 kW

	POPULATION	AREA (sq km)
within Noise Limited Contour	3246666	25897.4
not affected by terrain losses	3097397	24040.1
lost to NTSC IX	0	0.0
lost to additional IX by ATV	1945	47.9

lost to ATV IX only	1945	47.9
lost to all IX	1945	47.9

Potential Interfering Stations Included in above Scenario 13

42A PA PITTSBURGH	DTVPLN	DTVP1515	PLN
43A MI DETROIT	BLEDT	20001117ABV	LIC
43A NY BUFFALO	BLEDT	20030812AAJ	LIC
43A OH PORTSMOUTH	BLEDT	20040323ATV	LIC

After Analysis

Results for: 43A PA PITTSBURGH	BLCDT	20021216AAT	LIC
HAAT 303.0 m, ATV ERP 1000.0 kW			
	POPULATION	AREA (sq km)	
within Noise Limited Contour	3246666	25897.4	
not affected by terrain losses	3097397	24040.1	
lost to NTSC IX	0	0.0	
lost to additional IX by ATV	1945	47.9	
lost to ATV IX only	1945	47.9	
lost to all IX	1945	47.9	

Potential Interfering Stations Included in above Scenario 13

42A PA PITTSBURGH	DTVPLN	DTVP1515	PLN
43A MI DETROIT	BLEDT	20001117ABV	LIC
43A NY BUFFALO	BLEDT	20030812AAJ	LIC
43A OH PORTSMOUTH	BLEDT	20040323ATV	LIC
43A PA ERIE	USERRECORD01	APP	

Percent new IX = 0.0000%

Result key: 41
 Scenario 14 Affected station 16 WPGH-TV
 Before Analysis

Results for: 43A PA PITTSBURGH	BLCDT	20021216AAT	LIC
HAAT 303.0 m, ATV ERP 1000.0 kW			
	POPULATION	AREA (sq km)	
within Noise Limited Contour	3246666	25897.4	
not affected by terrain losses	3097397	24040.1	
lost to NTSC IX	0	0.0	
lost to additional IX by ATV	1945	47.9	
lost to ATV IX only	1945	47.9	
lost to all IX	1945	47.9	

Potential Interfering Stations Included in above Scenario 14

42A PA PITTSBURGH	DTVPLN	DTVP1515	PLN
43A MI DETROIT	BLEDT	20001117ABV	LIC
43A NY BUFFALO	BLEDT	20030812AAJ	LIC
43A OH PORTSMOUTH	DTVPLN	DTVP1550	PLN

After Analysis

Results for: 43A PA PITTSBURGH	BLCDT	20021216AAT	LIC
HAAT 303.0 m, ATV ERP 1000.0 kW			
	POPULATION	AREA (sq km)	
within Noise Limited Contour	3246666	25897.4	
not affected by terrain losses	3097397	24040.1	
lost to NTSC IX	0	0.0	
lost to additional IX by ATV	1945	47.9	
lost to ATV IX only	1945	47.9	
lost to all IX	1945	47.9	

Potential Interfering Stations Included in above Scenario 14

42A PA PITTSBURGH	DTVPLN	DTVP1515	PLN
43A MI DETROIT	BLEDT	20001117ABV	LIC
43A NY BUFFALO	BLEDT	20030812AAJ	LIC
43A OH PORTSMOUTH	DTVPLN	DTVP1550	PLN

KHANNA & GUILL, Inc. – Consulting Engineers

USERRECORD01

APP

Percent new IX = 0.0000%

42

Scenario	15	Affected station	16	WPGH-TV
----------	----	------------------	----	---------

Before Analysis

```
Results for: 43A PA PITTSBURGH          BLCDT      20021216AAT  LIC
```

HAAT 303.0 m, ATV ERP 1000.0 kW

	POPULATION	AREA (sq km)
within Noise Limited Contour	3246666	25897.4
not affected by terrain losses	3097397	24040.1
lost to NTSC IX	0	0.0
lost to additional IX by ATV	1945	47.9
lost to ATV IX only	1945	47.9
lost to all IX	1945	47.9

Potential Interfering Stations Included in above Scenario 15

42A PA PITTSBURGH DTVP LN DTVP1515 PLN

43A MI DETROIT	BLEDT	20001117ABV	LIC
----------------	-------	-------------	-----

43A NY BUFFALO	DTVPLN	DTVP1548	PLN
----------------	--------	----------	-----

43A OH PORTSMOUTH BLEDT 20040323ATV LIC

After Analysis

Results for: 43A PA PITTSBURGH BLCDT 20021216AAT LIC

HAAT 303.0 m, ATV ERP 1000.0 kW

	POPULATION	AREA (sq km)
within Noise Limited Contour	3246666	25897.4
not affected by terrain losses	3097397	24040.1
lost to NTSC IX	0	0.0
lost to additional IX by ATV	1945	47.9
lost to ATV IX only	1945	47.9
lost to all IX	1945	47.9

Potential Interfering Stations Included in above Scenario 15

42A PA PITTSBURGH DTVPLN DTVP1515 PLN

43A MI DETROIT BLEDT 20001117ABV LIC

43A NY BUFFALO	DTVPLN	DTVP1548	PLN
----------------	--------	----------	-----

43A OH PORTSMOUTH BLEDT 20040323ATV LIC

43A PA ERIE USERRECORD01 APP

Percent new IX = 0.0000%

43

Scenario	16	Affected station	16	WPGH-TV
----------	----	------------------	----	---------

Before Analysis

Results for: 43A PA PITTSBURGH BLCDT 20021216AAT LIC

HAAT 303.0 m, ATV ERP 1000.0 kW

	POPULATION	AREA (sq km)
within Noise Limited Contour	3246666	25897.4
not affected by terrain losses	3097397	24040.1
lost to NTSC IX	0	0.0
lost to additional IX by ATV	1945	47.9
lost to ATV IX only	1945	47.9
lost to all IX	1945	47.9

Potential Interfering Stations Included in above Scenario 16

42A PA PITTSBURGH DTVPLN DTVP1515 PLN

43A MI DETROIT BLEDT 20001117ABV LIC

43A NY BUFFALO	DTVPLN	DTVP1548	PLN
----------------	--------	----------	-----

43A OH PORTSMOUTH	DTVPLN	DTVP1550	PLN
-------------------	--------	----------	-----

After Analysis

Results for: 43A PA PITTSBURGH BLCDT 20021216AAT LIC

HAAT 303.0 m, ATV ERP 1000.0 kW

	POPULATION	AREA (sq km)
within Noise Limited Contour	3246666	25897.4
not affected by terrain losses	3097397	24040.1
lost to NTSC IX	0	0.0
lost to additional IX by ATV	1945	47.9
lost to ATV IX only	1945	47.9
lost to all IX	1945	47.9

Potential Interfering Stations Included in above Scenario 16

42A PA PITTSBURGH	DTVPLN	DTVP1515	PLN
43A MI DETROIT	BLEDT	20001117ABV	LIC
43A NY BUFFALO	DTVPLN	DTVP1548	PLN
43A OH PORTSMOUTH	DTVPLN	DTVP1550	PLN
43A PA ERIE	USERRECORD01		APP

Percent new IX = 0.0000%

Result key: 44
 Scenario 17 Affected station 16 WPGH-TV
 Before Analysis

Results for: 43A PA PITTSBURGH BLCDDT 20021216AAT LIC
 HAAT 303.0 m, ATV ERP 1000.0 kW

	POPULATION	AREA (sq km)
within Noise Limited Contour	3246666	25897.4
not affected by terrain losses	3097397	24040.1
lost to NTSC IX	0	0.0
lost to additional IX by ATV	1945	47.9
lost to ATV IX only	1945	47.9
lost to all IX	1945	47.9

Potential Interfering Stations Included in above Scenario 17

42A PA PITTSBURGH	DTVPLN	DTVP1515	PLN
43A MI DETROIT	DTVPLN	DTVP1541	PLN
43A NY BUFFALO	BLEDT	20030812AAJ	LIC
43A OH PORTSMOUTH	BLEDT	20040323ATV	LIC

After Analysis

Results for: 43A PA PITTSBURGH BLCDDT 20021216AAT LIC
 HAAT 303.0 m, ATV ERP 1000.0 kW

	POPULATION	AREA (sq km)
within Noise Limited Contour	3246666	25897.4
not affected by terrain losses	3097397	24040.1
lost to NTSC IX	0	0.0
lost to additional IX by ATV	1945	47.9
lost to ATV IX only	1945	47.9
lost to all IX	1945	47.9

Potential Interfering Stations Included in above Scenario 17

42A PA PITTSBURGH	DTVPLN	DTVP1515	PLN
43A MI DETROIT	DTVPLN	DTVP1541	PLN
43A NY BUFFALO	BLEDT	20030812AAJ	LIC
43A OH PORTSMOUTH	BLEDT	20040323ATV	LIC
43A PA ERIE	USERRECORD01		APP

Percent new IX = 0.0000%

Result key: 45
 Scenario 18 Affected station 16 WPGH-TV
 Before Analysis

Results for: 43A PA PITTSBURGH BLCDDT 20021216AAT LIC
 HAAT 303.0 m, ATV ERP 1000.0 kW

	POPULATION	AREA (sq km)
within Noise Limited Contour	3246666	25897.4
not affected by terrain losses	3097397	24040.1

lost to NTSC IX	0	0.0
lost to additional IX by ATV	1945	47.9
lost to ATV IX only	1945	47.9
lost to all IX	1945	47.9

Potential Interfering Stations Included in above Scenario 18

42A PA PITTSBURGH	DTVPLN	DTVP1515	PLN
43A MI DETROIT	DTVPLN	DTVP1541	PLN
43A NY BUFFALO	BLEDT	20030812AAJ	LIC
43A OH PORTSMOUTH	DTVPLN	DTVP1550	PLN

After Analysis

Results for: 43A PA PITTSBURGH BLC DT 20021216AAT LIC
HAAT 303.0 m, ATV ERP 1000.0 kW

	POPULATION	AREA (sq km)
within Noise Limited Contour	3246666	25897.4
not affected by terrain losses	3097397	24040.1
lost to NTSC IX	0	0.0
lost to additional IX by ATV	1945	47.9
lost to ATV IX only	1945	47.9
lost to all IX	1945	47.9

Potential Interfering Stations Included in above Scenario 18

42A PA PITTSBURGH	DTVPLN	DTVP1515	PLN
43A MI DETROIT	DTVPLN	DTVP1541	PLN
43A NY BUFFALO	BLEDT	20030812AAJ	LIC
43A OH PORTSMOUTH	DTVPLN	DTVP1550	PLN
43A PA ERIE	USERRECORD01		APP

Percent new IX = 0.0000%

Result key: 46
Scenario 19 Affected station 16 WPGH-TV
Before Analysis

Results for: 43A PA PITTSBURGH BLC DT 20021216AAT LIC
HAAT 303.0 m, ATV ERP 1000.0 kW

	POPULATION	AREA (sq km)
within Noise Limited Contour	3246666	25897.4
not affected by terrain losses	3097397	24040.1
lost to NTSC IX	0	0.0
lost to additional IX by ATV	1945	47.9
lost to ATV IX only	1945	47.9
lost to all IX	1945	47.9

Potential Interfering Stations Included in above Scenario 19

42A PA PITTSBURGH	DTVPLN	DTVP1515	PLN
43A MI DETROIT	DTVPLN	DTVP1541	PLN
43A NY BUFFALO	DTVPLN	DTVP1548	PLN
43A OH PORTSMOUTH	BLEDT	20040323ATV	LIC

After Analysis

Results for: 43A PA PITTSBURGH BLC DT 20021216AAT LIC
HAAT 303.0 m, ATV ERP 1000.0 kW

	POPULATION	AREA (sq km)
within Noise Limited Contour	3246666	25897.4
not affected by terrain losses	3097397	24040.1
lost to NTSC IX	0	0.0
lost to additional IX by ATV	1945	47.9
lost to ATV IX only	1945	47.9
lost to all IX	1945	47.9

Potential Interfering Stations Included in above Scenario 19

42A PA PITTSBURGH	DTVPLN	DTVP1515	PLN
43A MI DETROIT	DTVPLN	DTVP1541	PLN

KHANNA & GULL, Inc. – Consulting Engineers

43A NY BUFFALO	DTVPLN	DTVP1548	PLN
43A OH PORTSMOUTH	BLEDT	20040323ATV	LIC
43A PA ERIE	USERRECORD01		APP

Percent new IX = 0.0000%

Result key: 47
 Scenario 20 Affected station 16 WPGH-TV
 Before Analysis

Results for: 43A PA PITTSBURGH BLCDT 20021216AAT LIC
 HAAT 303.0 m, ATV ERP 1000.0 kW

	POPULATION	AREA (sq km)
within Noise Limited Contour	3246666	25897.4
not affected by terrain losses	3097397	24040.1
lost to NTSC IX	0	0.0
lost to additional IX by ATV	1945	47.9
lost to ATV IX only	1945	47.9
lost to all IX	1945	47.9

Potential Interfering Stations Included in above Scenario 20

42A PA PITTSBURGH	DTVPLN	DTVP1515	PLN
43A MI DETROIT	DTVPLN	DTVP1541	PLN
43A NY BUFFALO	DTVPLN	DTVP1548	PLN
43A OH PORTSMOUTH	DTVPLN	DTVP1550	PLN

After Analysis

Results for: 43A PA PITTSBURGH BLCDT 20021216AAT LIC
 HAAT 303.0 m, ATV ERP 1000.0 kW

	POPULATION	AREA (sq km)
within Noise Limited Contour	3246666	25897.4
not affected by terrain losses	3097397	24040.1
lost to NTSC IX	0	0.0
lost to additional IX by ATV	1945	47.9
lost to ATV IX only	1945	47.9
lost to all IX	1945	47.9

Potential Interfering Stations Included in above Scenario 20

42A PA PITTSBURGH	DTVPLN	DTVP1515	PLN
43A MI DETROIT	DTVPLN	DTVP1541	PLN
43A NY BUFFALO	DTVPLN	DTVP1548	PLN
43A OH PORTSMOUTH	DTVPLN	DTVP1550	PLN
43A PA ERIE	USERRECORD01		APP

Percent new IX = 0.0000%

Result key: 48
 Scenario 21 Affected station 16 WPGH-TV
 Before Analysis

Results for: 43A PA PITTSBURGH BLCDT 20021216AAT LIC
 HAAT 303.0 m, ATV ERP 1000.0 kW

	POPULATION	AREA (sq km)
within Noise Limited Contour	3246666	25897.4
not affected by terrain losses	3097397	24040.1
lost to NTSC IX	0	0.0
lost to additional IX by ATV	3890	56.9
lost to ATV IX only	3890	56.9
lost to all IX	3890	56.9

Potential Interfering Stations Included in above Scenario 21

42A PA PITTSBURGH	DTVPLN	DTVP1515	PLN
43A MI DETROIT	BPEDT	20080620AAL	CP
43A NY BUFFALO	BLEDT	20030812AAJ	LIC
43A OH PORTSMOUTH	BLEDT	20040323ATV	LIC

After Analysis

Results for: 43A PA PITTSBURGH BLCDT 20021216AAT LIC
 HAAT 303.0 m, ATV ERP 1000.0 kW

	POPULATION	AREA (sq km)
within Noise Limited Contour	3246666	25897.4
not affected by terrain losses	3097397	24040.1
lost to NTSC IX	0	0.0
lost to additional IX by ATV	3890	56.9
lost to ATV IX only	3890	56.9
lost to all IX	3890	56.9

Potential Interfering Stations Included in above Scenario 21

42A PA PITTSBURGH	DTVPLN	DTVP1515	PLN
43A MI DETROIT	BPEDT	20080620AAL	CP
43A NY BUFFALO	BLEDT	20030812AAJ	LIC
43A OH PORTSMOUTH	BLEDT	20040323ATV	LIC
43A PA ERIE	USERRECORD01		APP

Percent new IX = 0.0000%

Result key: 49
 Scenario 22 Affected station 16 WPGH-TV
 Before Analysis

Results for: 43A PA PITTSBURGH BLCDT 20021216AAT LIC
 HAAT 303.0 m, ATV ERP 1000.0 kW

	POPULATION	AREA (sq km)
within Noise Limited Contour	3246666	25897.4
not affected by terrain losses	3097397	24040.1
lost to NTSC IX	0	0.0
lost to additional IX by ATV	3890	56.9
lost to ATV IX only	3890	56.9
lost to all IX	3890	56.9

Potential Interfering Stations Included in above Scenario 22

42A PA PITTSBURGH	DTVPLN	DTVP1515	PLN
43A MI DETROIT	BPEDT	20080620AAL	CP
43A NY BUFFALO	BLEDT	20030812AAJ	LIC
43A OH PORTSMOUTH	DTVPLN	DTVP1550	PLN

After Analysis

Results for: 43A PA PITTSBURGH BLCDT 20021216AAT LIC
 HAAT 303.0 m, ATV ERP 1000.0 kW

	POPULATION	AREA (sq km)
within Noise Limited Contour	3246666	25897.4
not affected by terrain losses	3097397	24040.1
lost to NTSC IX	0	0.0
lost to additional IX by ATV	3890	56.9
lost to ATV IX only	3890	56.9
lost to all IX	3890	56.9

Potential Interfering Stations Included in above Scenario 22

42A PA PITTSBURGH	DTVPLN	DTVP1515	PLN
43A MI DETROIT	BPEDT	20080620AAL	CP
43A NY BUFFALO	BLEDT	20030812AAJ	LIC
43A OH PORTSMOUTH	DTVPLN	DTVP1550	PLN
43A PA ERIE	USERRECORD01		APP

Percent new IX = 0.0000%

Result key: 50
 Scenario 23 Affected station 16 WPGH-TV
 Before Analysis

Results for: 43A PA PITTSBURGH BLCDT 20021216AAT LIC
 HAAT 303.0 m, ATV ERP 1000.0 kW

	POPULATION	AREA (sq km)
--	------------	--------------

within Noise Limited Contour	3246666	25897.4
not affected by terrain losses	3097397	24040.1
lost to NTSC IX	0	0.0
lost to additional IX by ATV	3890	56.9
lost to ATV IX only	3890	56.9
lost to all IX	3890	56.9

Potential Interfering Stations Included in above Scenario 23

42A PA PITTSBURGH	DTVPLN	DTVP1515	PLN
43A MI DETROIT	BPEDT	20080620AAL	CP
43A NY BUFFALO	DTVPLN	DTVP1548	PLN
43A OH PORTSMOUTH	BLEDT	20040323ATV	LIC

After Analysis

Results for: 43A PA PITTSBURGH BLCDT 20021216AAT LIC
 HAAT 303.0 m, ATV ERP 1000.0 kW

	POPULATION	AREA (sq km)
within Noise Limited Contour	3246666	25897.4
not affected by terrain losses	3097397	24040.1
lost to NTSC IX	0	0.0
lost to additional IX by ATV	3890	56.9
lost to ATV IX only	3890	56.9
lost to all IX	3890	56.9

Potential Interfering Stations Included in above Scenario 23

42A PA PITTSBURGH	DTVPLN	DTVP1515	PLN
43A MI DETROIT	BPEDT	20080620AAL	CP
43A NY BUFFALO	DTVPLN	DTVP1548	PLN
43A OH PORTSMOUTH	BLEDT	20040323ATV	LIC
43A PA ERIE	USERRECORD01		APP

Percent new IX = 0.0000%

Result key: 51
 Scenario 24 Affected station 16 WPGH-TV
 Before Analysis

Results for: 43A PA PITTSBURGH BLCDT 20021216AAT LIC
 HAAT 303.0 m, ATV ERP 1000.0 kW

	POPULATION	AREA (sq km)
within Noise Limited Contour	3246666	25897.4
not affected by terrain losses	3097397	24040.1
lost to NTSC IX	0	0.0
lost to additional IX by ATV	3890	56.9
lost to ATV IX only	3890	56.9
lost to all IX	3890	56.9

Potential Interfering Stations Included in above Scenario 24

42A PA PITTSBURGH	DTVPLN	DTVP1515	PLN
43A MI DETROIT	BPEDT	20080620AAL	CP
43A NY BUFFALO	DTVPLN	DTVP1548	PLN
43A OH PORTSMOUTH	DTVPLN	DTVP1550	PLN

After Analysis

Results for: 43A PA PITTSBURGH BLCDT 20021216AAT LIC
 HAAT 303.0 m, ATV ERP 1000.0 kW

	POPULATION	AREA (sq km)
within Noise Limited Contour	3246666	25897.4
not affected by terrain losses	3097397	24040.1
lost to NTSC IX	0	0.0
lost to additional IX by ATV	3890	56.9
lost to ATV IX only	3890	56.9
lost to all IX	3890	56.9

Potential Interfering Stations Included in above Scenario 24

KHANNA & GULL, Inc. – Consulting Engineers

42A PA PITTSBURGH	DTVPLN	DTVP1515	PLN
43A MI DETROIT	BPEDT	20080620AAL	CP
43A NY BUFFALO	DTVPLN	DTVP1548	PLN
43A OH PORTSMOUTH	DTVPLN	DTVP1550	PLN
43A PA ERIE	USERRECORD01		APP

Percent new IX = 0.0000%

Worst case new IX 0.0000% Scenario 1

#####

Analysis of Interference to Affected Station 17

Analysis of current record

Channel	Call	City/State	Application Ref. No.
43	W43CL	PENDLETON WV	BNPTTL -20000828AED

Stations Potentially Affecting This Station

Chan	Call	City/State	Dist(km)	Status	Application Ref. No.
36	WGPT	OAKLAND MD	68.2	APP	BMPEDT -20080620ANK
36	WGPT	OAKLAND MD	68.2	PLN	DTVPLN -DTVP1332
36	WGPT	OAKLAND MD	68.2	CP	BPEDT -20080318AAB
42	WHSV-TV	HARRISONBURG VA	83.2	APP	BDRTCT -20090401APJ
43	WIAV-LD	WASHINGTON DC	207.8	APP	BDISDTL -20090428AAY
43	W43BP	CRESAPTOWN MD	93.5	LIC	BLTT -19981124JI
43	WHFL-LP	GOLDSBORO NC	396.3	CP	BDFCDTA -20090629ACY
43	WLXI	GREENSBORO NC	328.7	CP	BPCDT -20080619AII
43	WLXI-TV	GREENSBORO NC	328.7	PLN	DTVPLN -DTVP1545
43	WLXI	GREENSBORO NC	328.7	LIC	BLCDT -20060630ADU
43	W47AB	MANSFIELD OH	348.0	APP	BDISDTT -20090716ABH
43	WPBO	PORTSMOUTH OH	328.7	LIC	BLEDT -20040323ATV
43	WPBO	PORTSMOUTH OH	328.7	PLN	DTVPLN -DTVP1550
43	WLEP-LD	ERIE PA	372.2	CP	BDCCDTL -20061024AER
43	W43CO-D	KINGSTON PA	401.6	CP	BDCCDTL -20061030AGG
43	WPGH-TV	PITTSBURGH PA	199.7	CP MOD	BMPEDT -20021216AAS
43	WPGH-TV	PITTSBURGH PA	199.7	PLN	DTVPLN -DTVP1552
43	WPGH-TV	PITTSBURGH PA	199.7	LIC	BLCDT -20021216AAT
43	WTLU-LD	LYNCHBURG VA	159.4	APP	BMPDTL -20090702ACM
43	WTLU-LD	LYNCHBURG VA	159.4	CP MOD	BMPDTL -20080804ABZ
43	WRKV-LP	ROANOKE VA	195.6	APP	BSTA -20070718AEC
43	WAZM-LD	STAUNTON-WAYNESBORO VA	61.8	CP	BDCCDTL -20061030AAA
43	WBTD-LD	SUFFOLK VA	326.4	CP	BDCCDTL -20061020ACR
43	WVVA	BECKLEY WV	180.0	CP	BDRTCT -20090707AEU
44	WIAV-LD	WASHINGTON DC	189.9	CP MOD	BMPDTL -20090630ADG
44	W44CF	CLARKSBURG WV	103.8	CP	BDFCDTT -20060313AAK
46	WHTJ	CHARLOTTESVILLE VA	112.8	LIC	BLEDT -20050819ADO
46	WHTJ	CHARLOTTESVILLE VA	112.8	PLN	DTVPLN -DTVP1661
46	WHTJ	CHARLOTTESVILLE VA	112.8	CP	BPEDT -20080610AAP
51	WWPX-DR	MARTINSBURG WV	109.0	APP	BPRM -20080619ALR
43	WLEP-LD	ERIE PA	367.2	APP	USERRECORD-01

Proposed station is beyond the site to
nearest cell evaluation distance

#####

Analysis of Interference to Affected Station 18

Analysis of current record

Channel	Call	City/State	Application Ref. No.
44	WXOX-LP	CLEVELAND OH	BDFCDTL -20080221ACU

Stations Potentially Affecting This Station

Chan	Call	City/State	Dist(km)	Status	Application Ref. No.
------	------	------------	----------	--------	----------------------

KHANNA & GULL, Inc. – Consulting Engineers

43	W47AB	MANSFIELD OH	100.1	APP	BDISDTT	-20090716ABH
44	WTSF	ASHLAND KY	334.9	CP	BPCDT	-20000501AEQ
44	WTSF	ASHLAND KY	334.9	PLN	DTVPLN	-DTVP1573
44	WWPB	HAGERSTOWN MD	368.9	LIC	BLEDT	-20031029ACE
44	WWPB	HAGERSTOWN MD	368.9	PLN	DTVPLN	-DTVP1576
44	WWPB	HAGERSTOWN MD	368.9	CP	BPEDT	-20080620ANI
44	WZPX-TV	BATTLE CREEK MI	313.3	LIC	BLCDT	-20020510AAG
44	WZPX	BATTLE CREEK MI	313.3	PLN	DTVPLN	-DTVP1578
44	WWJ-TV	DETROIT MI	170.1	CP MOD	BMPCDT	-20080616ABD
44	WWJ-TV	DETROIT MI	170.1	PLN	DTVPLN	-DTVP1579
44	WWJ-TV	DETROIT MI	170.1	LIC	BLCDT	-19990720LH
44	WTLW	LIMA OH	219.6	CP MOD	BMPCDT	-20080616ABV
44	WTLW	LIMA OH	219.6	PLN	DTVPLN	-DTVP1589
44	W58AM	YOUNGSTOWN OH	94.4	CP	BDISDTT	-20060331ARW
44	W44CF	CLARKSBURG WV	262.6	CP	BDFCDTT	-20060313AAK
45	WNEO	ALLIANCE OH	84.4	CP MOD	BMPEDT	-20080619AIA
45	WNEO	ALLIANCE OH	84.4	PLN	DTVPLN	-DTVP1626
45	WXCBCD	DELAWARE OH	164.8	APP	BDISDTA	-20090720ACP
45	WLQP-LP	LIMA OH	216.1	APP	BDISDTL	-20090623AAW
45	W45BT	BROOKVILLE PA	217.6	APP	BDFCDTL	-20090626ACX
43	WLEP-LD	ERIE PA	153.9	APP	USERRECORD-01	

Proposal causes no interference

#####

Analysis of Interference to Affected Station 19

Analysis of current record

Channel	Call	City/State	Application Ref. No.
44	WXXO-LP	CLEVELAND OH	BPTTL -20050927ALC

Stations Potentially Affecting This Station

Chan	Call	City/State	Dist(km)	Status	Application Ref. No.
36	WYTV	YOUNGSTOWN OH	95.6	CP	BPCDT -20080620ALJ
36	WYTV	YOUNGSTOWN OH	95.6	PLN	DTVPLN -DTVP1342
36	WYTV	YOUNGSTOWN OH	95.6	LIC	BLCDT -20060711AAV
41	WKBN-TV	YOUNGSTOWN OH	95.0	CP	BPCDT -19991025ACU
41	WKBN-TV	YOUNGSTOWN OH	95.0	PLN	DTVPLN -DTVP1480
42	WGGN-TV	SANDUSKY OH	71.9	CP MOD	BMPCDT -20081024AER
42	WGGN-TV	SANDUSKY OH	91.5	PLN	DTVPLN -DTVP1512
43	W47AB	MANSFIELD OH	100.1	APP	BDISDTT -20090716ABH
43	WLEP-LD	ERIE PA	160.7	CP	BDCDDTL -20061024AER
44	WTSF	ASHLAND KY	334.9	CP	BPCDT -20000501AEQ
44	WTSF	ASHLAND KY	334.9	PLN	DTVPLN -DTVP1573
44	WWPB	HAGERSTOWN MD	368.9	LIC	BLEDT -20031029ACE
44	WWPB	HAGERSTOWN MD	368.9	PLN	DTVPLN -DTVP1576
44	WWPB	HAGERSTOWN MD	368.9	CP	BPEDT -20080620ANI
44	WZPX-TV	BATTLE CREEK MI	313.3	LIC	BLCDT -20020510AAG
44	WZPX	BATTLE CREEK MI	313.3	PLN	DTVPLN -DTVP1578
44	WWJ-TV	DETROIT MI	170.1	CP MOD	BMPCDT -20080616ABD
44	WWJ-TV	DETROIT MI	170.1	PLN	DTVPLN -DTVP1579
44	WWJ-TV	DETROIT MI	170.1	LIC	BLCDT -19990720LH
44	WTLW	LIMA OH	219.6	CP MOD	BMPCDT -20080616ABV
44	WTLW	LIMA OH	219.6	PLN	DTVPLN -DTVP1589
44	W58AM	YOUNGSTOWN OH	94.4	CP	BDISDTT -20060331ARW
44	W52BO	MEADVILLE PA	129.7	APP	BPTT -20010223AAZ
44	W44CF	CLARKSBURG WV	262.6	CP	BDFCDTT -20060313AAK
45	WNEO	ALLIANCE OH	84.4	CP MOD	BMPEDT -20080619AIA
45	WNEO	ALLIANCE OH	84.4	PLN	DTVPLN -DTVP1626
45	WXCBCD	DELAWARE OH	164.8	APP	BDISDTA -20090720ACP
47	WRLM	CANTON OH	42.8	LIC	BLCDT -20060222AAK
47	WOAC	CANTON OH	42.8	PLN	DTVPLN -DTVP1685
43	WLEP-LD	ERIE PA	153.9	APP	USERRECORD-01

Proposed station is beyond the site to
nearest cell evaluation distance

#####

Analysis of Interference to Affected Station 20

Analysis of current record

Channel	Call	City/State	Application Ref. No.
44	WXOX-LP	CLEVELAND OH	BDISTTL -20060207AAO

Stations Potentially Affecting This Station

Chan	Call	City/State	Dist(km)	Status	Application Ref. No.
36	WYTV	YOUNGSTOWN OH	95.6	CP	BPCDT -20080620ALJ
36	WYTV	YOUNGSTOWN OH	95.6	PLN	DTVPLN -DTVP1342
36	WYTV	YOUNGSTOWN OH	95.6	LIC	BLCDT -20060711AAV
41	WKBN-TV	YOUNGSTOWN OH	95.0	CP	BPCDT -19991025ACU
41	WKBN-TV	YOUNGSTOWN OH	95.0	PLN	DTVPLN -DTVP1480
42	WGGN-TV	SANDUSKY OH	71.9	CP MOD	BMPCDT -20081024AER
42	WGGN-TV	SANDUSKY OH	91.5	PLN	DTVPLN -DTVP1512
43	W47AB	MANSFIELD OH	100.1	APP	BDISDTT -20090716ABH
43	WLEP-LD	ERIE PA	160.7	CP	BDCCDTL -20061024AER
44	WTSF	ASHLAND KY	334.9	CP	BPCDT -20000501AEQ
44	WTSF	ASHLAND KY	334.9	PLN	DTVPLN -DTVP1573
44	WWPB	HAGERSTOWN MD	368.9	LIC	BLEDT -20031029ACE
44	WWPB	HAGERSTOWN MD	368.9	PLN	DTVPLN -DTVP1576
44	WWPB	HAGERSTOWN MD	368.9	CP	BPEDT -20080620ANI
44	WZPX-TV	BATTLE CREEK MI	313.3	LIC	BLCDT -20020510AAG
44	WZPX	BATTLE CREEK MI	313.3	PLN	DTVPLN -DTVP1578
44	WWJ-TV	DETROIT MI	170.1	CP MOD	BMPCDT -20080616ABD
44	WWJ-TV	DETROIT MI	170.1	PLN	DTVPLN -DTVP1579
44	WWJ-TV	DETROIT MI	170.1	LIC	BLCDT -19990720LH
44	WTLW	LIMA OH	219.6	CP MOD	BMPCDT -20080616ABV
44	WTLW	LIMA OH	219.6	PLN	DTVPLN -DTVP1589
44	W58AM	YOUNGSTOWN OH	94.4	CP	BDISDTT -20060331ARW
44	W52BO	MEADVILLE PA	129.7	APP	BPPT -20010223AAZ
44	W44CF	CLARKSBURG WV	262.6	CP	BDFCDTT -20060313AAK
45	WNEO	ALLIANCE OH	84.4	CP MOD	BMPEDT -20080619AIA
45	WNEO	ALLIANCE OH	84.4	PLN	DTVPLN -DTVP1626
45	WXC-BD	DELAWARE OH	164.8	APP	BDISDTA -20090720ACP
47	WRLM	CANTON OH	42.8	LIC	BLCDT -20060222AAK
47	WOAC	CANTON OH	42.8	PLN	DTVPLN -DTVP1685
43	WLEP-LD	ERIE PA	153.9	APP	USERRECORD-01

Proposed station is beyond the site to
nearest cell evaluation distance

#####

Analysis of Interference to Affected Station 21

Analysis of current record

Channel	Call	City/State	Application Ref. No.
44	W58AM	YOUNGSTOWN OH	BDISDTT -20060331ARW

Stations Potentially Affecting This Station

Chan	Call	City/State	Dist(km)	Status	Application Ref. No.
43	W47AB	MANSFIELD OH	160.5	APP	BDISDTT -20090716ABH
43	WPGH-TV	PITTSBURGH PA	84.2	CP MOD	BMPCDT -20021216AAS
43	WPGH-TV	PITTSBURGH PA	84.2	PLN	DTVPLN -DTVP1552
43	WPGH-TV	PITTSBURGH PA	84.2	LIC	BLCDT -20021216AAT
44	WIAV-LD	WASHINGTON DC	385.1	CP MOD	BMPDTL -20090630ADG
44	WTSF	ASHLAND KY	331.8	CP	BPCDT -20000501AEQ
44	WTSF	ASHLAND KY	331.8	PLN	DTVPLN -DTVP1573
44	WWPB	HAGERSTOWN MD	276.3	LIC	BLEDT -20031029ACE
44	WWPB	HAGERSTOWN MD	276.3	PLN	DTVPLN -DTVP1576
44	WWPB	HAGERSTOWN MD	276.3	CP	BPEDT -20080620ANI
44	WWJ-TV	DETROIT MI	259.2	CP MOD	BMPCDT -20080616ABD
44	WWJ-TV	DETROIT MI	259.2	PLN	DTVPLN -DTVP1579

KHANNA & GULL, Inc. – Consulting Engineers

44	WWJ-TV	DETROIT MI	259.2	LIC	BLCDDT	-19990720LH
44	WXOX-LP	CLEVELAND OH	94.4	APP	BDFCDTL	-20080221ACU
44	WXOX-LP	CLEVELAND OH	94.4	CP	BDISTTL	-20060207AAO
44	WTLW	LIMA OH	299.6	CP MOD	BMPCDT	-20080616ABV
44	WTLW	LIMA OH	299.6	PLN	DTVPLN	-DTVP1589
44	W52BO	MEADVILLE PA	72.4	APP	BPTT	-20010223AAZ
44	W44CF	CLARKSBURG WV	202.7	CP	BDFCDTT	-20060313AAK
45	WNEO	ALLIANCE OH	29.8	CP MOD	BMPEDT	-20080619AIA
45	WNEO	ALLIANCE OH	29.8	PLN	DTVPLN	-DTVP1626
45	WXCW-CD	DELAWARE OH	220.3	APP	BDISDTA	-20090720ACP
45	W45BT	BROOKVILLE PA	127.9	APP	BDFCDTL	-20090626ACX
45	W45BW	PARKERSBURG WV	212.3	CP	BDFCDTT	-20060329AEP
43	WLEP-LD	ERIE PA	117.0	APP	USERRECORD-01	

Proposal causes no interference

#####

Analysis of Interference to Affected Station 22

Analysis of current record

Channel	Call	City/State	Application	Ref. No.
44	W52BO	MEADVILLE PA	BPTT	-20010223AAZ

Stations Potentially Affecting This Station

Chan	Call	City/State	Dist(km)	Status	Application	Ref. No.
36	WYTV	YOUNGSTOWN OH	73.8	CP	BPCDDT	-20080620ALJ
36	WYTV	YOUNGSTOWN OH	73.8	PLN	DTVPLN	-DTVP1342
36	WYTV	YOUNGSTOWN OH	73.8	LIC	BLCDDT	-20060711AAV
41	WKBN-TV	YOUNGSTOWN OH	74.8	CP	BPCDDT	-19991025ACU
41	WKBN-TV	YOUNGSTOWN OH	74.8	PLN	DTVPLN	-DTVP1480
42	WPMY	PITTSBURGH PA	126.6	LIC	BLCDDT	-20060608AAB
42	WPMY	PITTSBURGH PA	126.6	PLN	DTVPLN	-DTVP1515
43	WLEP-LD	ERIE PA	53.4	CP	BDCCDDL	-20061024AER
43	WPGH-TV	PITTSBURGH PA	126.6	CP MOD	BMPCDT	-20021216AAS
43	WPGH-TV	PITTSBURGH PA	126.6	PLN	DTVPLN	-DTVP1552
43	WPGH-TV	PITTSBURGH PA	126.6	LIC	BLCDDT	-20021216AAT
44	WIAV-LD	WASHINGTON DC	397.2	CP MOD	BMPDDL	-20090630ADG
44	WWPB	HAGERSTOWN MD	287.5	LIC	BLEDT	-20031029ACE
44	WWPB	HAGERSTOWN MD	287.5	PLN	DTVPLN	-DTVP1576
44	WWPB	HAGERSTOWN MD	287.5	CP	BPEDT	-20080620ANI
44	WWJ-TV	DETROIT MI	264.1	CP MOD	BMPCDT	-20080616ABD
44	WWJ-TV	DETROIT MI	264.1	PLN	DTVPLN	-DTVP1579
44	WWJ-TV	DETROIT MI	264.1	LIC	BLCDDT	-19990720LH
44	WNYS-TV	SYRACUSE NY	355.1	LIC	BLCDDT	-20060509AAQ
44	WNYS-TV	SYRACUSE NY	355.1	PLN	DTVPLN	-DTVP1588
44	WXOX-LP	CLEVELAND OH	129.7	APP	BDFCDTL	-20080221ACU
44	WXOX-LP	CLEVELAND OH	129.7	CP	BDISTTL	-20060207AAO
44	WTLW	LIMA OH	349.0	CP MOD	BMPCDT	-20080616ABV
44	WTLW	LIMA OH	349.0	PLN	DTVPLN	-DTVP1589
44	W58AM	YOUNGSTOWN OH	72.4	CP	BDISDTT	-20060331ARW
44	WVIA-TV	WAYMART PA	394.2	APP	BDRTET	-20090430ABG
44	W44CF	CLARKSBURG WV	261.6	CP	BDFCDTT	-20060313AAK
45	WNEO	ALLIANCE OH	101.2	CP MOD	BMPEDT	-20080619AIA
45	WNEO	ALLIANCE OH	101.2	PLN	DTVPLN	-DTVP1626
45	W45BT	BROOKVILLE PA	104.6	APP	BDFCDTL	-20090626ACX
47	WRLM	CANTON OH	113.0	LIC	BLCDDT	-20060222AAK
47	WOAC	CANTON OH	113.0	PLN	DTVPLN	-DTVP1685
48	WPXI	PITTSBURGH PA	130.1	LIC	BLCDDT	-20050609AAQ
48	WPXI	PITTSBURGH PA	130.1	PLN	DTVPLN	-DTVP1717
43	WLEP-LD	ERIE PA	46.7	APP	USERRECORD-01	

Proposal causes no interference

#####

Analysis of Interference to Affected Station 23

KHANNA & GULL, Inc. – Consulting Engineers

Analysis of current record

Channel	Call	City/State	Application Ref. No.
45	W45BT	BROOKVILLE PA	BLTTL -20020507AAB

Stations Potentially Affecting This Station

Chan	Call	City/State	Dist(km)	Status	Application Ref. No.
38	WQEX	PITTSBURGH PA	103.6	CP MOD	BMPCDT -20080620AAM
38	WQEX	PITTSBURGH PA	103.6	PLN	DTVPLN -DTVP1377
41	WKBN-TV	YOUNGSTOWN OH	128.5	CP	BPCDT -19991025ACU
41	WKBN-TV	YOUNGSTOWN OH	128.5	PLN	DTVPLN -DTVP1480
42	WPMY	PITTSBURGH PA	102.1	LIC	BLCDT -20060608AAB
42	WPMY	PITTSBURGH PA	102.1	PLN	DTVPLN -DTVP1515
43	WPGH-TV	PITTSBURGH PA	102.1	CP MOD	BMPCDT -20021216AAS
43	WPGH-TV	PITTSBURGH PA	102.1	PLN	DTVPLN -DTVP1552
43	WPGH-TV	PITTSBURGH PA	102.1	LIC	BLCDT -20021216AAT
44	W58AM	YOUNGSTOWN OH	127.9	CP	BDISDTT -20060331ARW
45	WDIV-TV	DETROIT MI	371.2	LIC	BLCDT -19990429KX
45	WDIV-TV	DETROIT MI	371.2	PLN	DTVPLN -DTVP1616
45	WDIV-TV	DETROIT MI	371.2	APP	BPCDT -20090324ABD
45	WDIV-TV	DETROIT MI	371.2	CP	BPCDT -20080620AFZ
45	W45DH-D	PORT JERVIS NY	367.4	CP	BDISDTL -20080219BKJ
45	WROC-TV	ROCHESTER NY	257.1	LIC	BLCDT -20060418AAA
45	WROC-TV	ROCHESTER NY	257.1	PLN	DTVPLN -DTVP1625
45	WNEO	ALLIANCE OH	152.6	CP MOD	BMPEDT -20080619AIA
45	WNEO	ALLIANCE OH	152.5	PLN	DTVPLN -DTVP1626
45	WXCW-CD	DELAWARE OH	343.5	APP	BDISDTA -20090720ACP
45	NEW	ERIE PA	128.0	APP	BNPTTL -20000830BDH
45	WOLF-TV	HAZLETON PA	271.6	LIC	BLCDT -20050906ACK
45	WOLF-TV	HAZLETON PA	271.6	PLN	DTVPLN -DTVP1630
45	W54AV	MANSFIELD PA	195.8	APP	BDISDTT -20060403ADJ
45	W45BW	PARKERSBURG WV	292.0	CP	BDFCDTT -20060329AEP
46	WKBS-TV	ALTOONA PA	83.3	CP	BPCDT -20080620ACM
46	WKBS-TV	ALTOONA PA	83.3	PLN	DTVPLN -DTVP1656
46	WKBS-TV	ALTOONA PA	83.3	LIC	BLCDT -20060629ACS
48	WPXI	PITTSBURGH PA	104.6	LIC	BLCDT -20050609AAQ
48	WPXI	PITTSBURGH PA	104.6	PLN	DTVPLN -DTVP1717
60	WKHU-CA	KITTANNING PA	51.0	LIC	BLTTA -20080128AAV
43	WLEP-LD	ERIE PA	129.0	APP	USERRECORD-01

Proposed station is beyond the site to
nearest cell evaluation distance

#####

Analysis of Interference to Affected Station 24

Analysis of current record

Channel	Call	City/State	Application Ref. No.
45	NEW	ERIE PA	BNPTTL -20000830BDH

Stations Potentially Affecting This Station

Chan	Call	City/State	Dist(km)	Status	Application Ref. No.
38	WKBW-TV	BUFFALO NY	124.6	LIC	BLCDT -20051215AAG
38	WKBW-TV	BUFFALO NY	124.6	PLN	DTVPLN -DTVP1374
41	WKBN-TV	YOUNGSTOWN OH	128.9	CP	BPCDT -19991025ACU
41	WKBN-TV	YOUNGSTOWN OH	128.9	PLN	DTVPLN -DTVP1480
43	WNED-TV	BUFFALO NY	133.9	LIC	BLEDT -20030812AAJ
43	WNED-TV	BUFFALO NY	133.9	PLN	DTVPLN -DTVP1548
44	WXOX-LP	CLEVELAND OH	165.1	APP	BDFCDTL -20080221ACU
44	W58AM	YOUNGSTOWN OH	126.3	CP	BDISDTT -20060331ARW
45	WDIV-TV	DETROIT MI	271.7	LIC	BLCDT -19990429KX
45	WDIV-TV	DETROIT MI	271.7	PLN	DTVPLN -DTVP1616
45	WDIV-TV	DETROIT MI	271.7	APP	BPCDT -20090324ABD
45	WDIV-TV	DETROIT MI	271.7	CP	BPCDT -20080620AFZ
45	WROC-TV	ROCHESTER NY	225.3	LIC	BLCDT -20060418AAA
45	WROC-TV	ROCHESTER NY	225.3	PLN	DTVPLN -DTVP1625
45	WNEO	ALLIANCE OH	154.3	CP MOD	BMPEDT -20080619AIA

KHANNA & GULL, Inc. – Consulting Engineers

45	WNEO	ALLIANCE OH	154.3	PLN	DTVPLN	-DTVP1626
45	WXCW-CD	DELAWARE OH	326.4	APP	BDISDTA	-20090720ACP
45	WLQP-LP	LIMA OH	379.6	APP	BDISDTL	-20090623AAW
45	W45BT	BROOKVILLE PA	128.0	APP	BDFCDTL	-20090626ACX
45	WOLF-TV	HAZLETON PA	353.1	LIC	BLCDDT	-20050906ACK
45	WOLF-TV	HAZLETON PA	353.1	PLN	DTVPLN	-DTVP1630
45	W54AV	MANSFIELD PA	252.3	APP	BDISDTT	-20060403ADJ
45	W45BW	PARKERSBURG WV	338.5	CP	BDFCDTT	-20060329AEP
49	WNYO-TV	BUFFALO NY	144.2	CP	BPCDDT	-20090602ACD
49	WNYO-TV	BUFFALO NY	133.1	PLN	DTVPLN	-DTVP1748
49	WNYO-TV	BUFFALO NY	144.2	APP	BPCDDT	-20090717AED
49	WNYO-DR	BUFFALO NY	144.2	APP	BPRM	-20090305AGE
60	W60AC	FINDLEY LAKE NY	17.0	LIC	BLTT	-1667
43	WLEP-LD	ERIE PA	11.2	APP	USERRECORD-01	

Proposal causes no interference

#####

Analysis of Interference to Affected Station 25

Analysis of current record

Channel	Call	City/State	Application	Ref. No.
51	W51BI	KIRTLAND OH	BLTT	-19941013JD

Stations Potentially Affecting This Station

Chan	Call	City/State	Dist(km)	Status	Application	Ref. No.
47	WRLM	CANTON OH	39.6	LIC	BLCDDT	-20060222AAK
47	WOAC	CANTON OH	39.6	PLN	DTVPLN	-DTVP1685
49	WDLI-DR	CANTON OH	51.8	LIC	BPRM	-20080620AHX
49	WDLI-TV	CANTON OH	51.8	PLN	DTVPLN	-DTVP1749
49	WDLI-TV	CANTON OH	51.8	APP	BPCDDT	-20090723AFG
50	WEAO	AKRON OH	51.0	LIC	BLEDT	-20040928AQT
50	WEAO	AKRON OH	51.0	PLN	DTVPLN	-DTVP1775
50	WEAO	AKRON OH	51.0	CP	BPEDT	-20080620AAD
50	NEW	TOLEDO OH	187.6	APP	BDCCDTL	-20061030ARV
50	WQLN	ERIE PA	120.5	LIC	BLEDT	-20060601BCQ
50	WQLN	ERIE PA	120.5	PLN	DTVPLN	-DTVP1778
50	WQLN	ERIE PA	120.5	CP MOD	BMPEDT	-20000412AAR
51	WIWU-CD	MARION IN	376.8	LIC	BLDTA	-20090611ABQ
51	WLAJ	LANSING MI	287.4	LIC	BLCDDT	-20040422ABI
51	WLAJ	LANSING MI	287.4	PLN	DTVPLN	-DTVP1800
51	WKEF	DAYTON OH	315.9	APP	BPCDDT	-20090320AGS
51	WKEF	DAYTON OH	315.9	PLN	DTVPLN	-DTVP1807
51	WKEF	DAYTON OH	315.9	LIC	BLCDDT	-20050620AAP
51	W09CG	FINDLAY OH	200.5	APP	BDISDTT	-20060329ACC
51	WIVX-LP	LOUDONVILLE OH	119.3	APP	BDISDTL	-20090629ADH
51	W51CY	CHAMBERSBURG PA	374.7	CP	BDFCDTT	-20060307ACN
51	W51CY	CHAMBERSBURG PA	374.7	CP	BDFCDTT	-20090505ABE
51	WTAE-TV	PITTSBURGH PA	181.7	LIC	BLCDDT	-20041014AEY
51	WTAE-TV	PITTSBURGH PA	181.7	PLN	DTVPLN	-DTVP1810
51	WHSV-TV	STAUNTON VA	403.7	APP	BDRTCT	-20090501AAN
51	WWPX-DR	MARTINSBURG WV	393.3	APP	BPRM	-20080619ALR
51	W51EG-D	PARKERSBURG WV	251.5	LIC	BLDTT	-20081103ACQ
43	WLEP-LD	ERIE PA	120.6	APP	USERRECORD-01	

Proposed station is beyond the site to
nearest cell evaluation distance

#####

Analysis of Interference to Affected Station 26

Analysis of current record

Channel	Call	City/State	Application	Ref. No.
51	W51EC	ERIE PA	BNPTTL	-20000830BNF

Stations Potentially Affecting This Station

Chan	Call	City/State	Dist(km)	Status	Application	Ref. No.
43	WNED-TV	BUFFALO NY	135.1	LIC	BLEDT	-20030812AAJ
43	WNED-TV	BUFFALO NY	135.1	PLN	DTVPLN	-DTVP1548
49	WNYO-TV	BUFFALO NY	145.3	CP	BPCDT	-20090602ACD
49	WNYO-TV	BUFFALO NY	134.4	PLN	DTVPLN	-DTVP1748
49	WNYO-TV	BUFFALO NY	145.3	APP	BPCDT	-20090717AED
49	WNYO-DR	BUFFALO NY	145.3	APP	BPRM	-20090305AGE
50	WQLN	ERIE PA	10.3	LIC	BLEDT	-20060601BCQ
50	WQLN	ERIE PA	10.3	PLN	DTVPLN	-DTVP1778
50	WQLN	ERIE PA	10.3	CP MOD	BMPEDT	-20000412AAR
51	WLAJ	LANSING MI	378.1	LIC	BLCDT	-20040422ABI
51	WLAJ	LANSING MI	378.1	PLN	DTVPLN	-DTVP1800
51	WHSU-CA	SYRACUSE NY	328.2	APP	BDFCDTA	-20090105AHY
51	W09CG	FINDLAY OH	325.6	APP	BDISDTT	-20060329ACC
51	W51BI	KIRTLAND OH	130.7	LIC	BLTT	-19941013JD
51	W51BI	KIRTLAND OH	130.7	CP	BDFCDTT	-20060223ABH
51	WIVX-LP	LOUDONVILLE OH	246.9	APP	BDISDTL	-20090629ADH
51	W51CY	CHAMBERSBURG PA	334.8	CP	BDFCDTT	-20060307ACN
51	W51CY	CHAMBERSBURG PA	334.8	CP	BDFCDTT	-20090505ABE
51	W51BP	CLARKS SUMMIT, ETC PA	359.9	CP	BDFCDTT	-20060403AKM
51	WTAE-TV	PITTSBURGH PA	200.4	LIC	BLCDT	-20041014AEY
51	WTAE-TV	PITTSBURGH PA	200.4	PLN	DTVPLN	-DTVP1810
51	WFMZ-TV	READING PA	389.3	APP	BDRTCT	-20090604ABH
51	WWPX-DR	MARTINSBURG WV	383.5	APP	BPRM	-20080619ALR
51	W51EG-D	PARKERSBURG WV	347.5	LIC	BLDTT	-20081103ACQ
43	WLEP-LD	ERIE PA	10.2	APP	USERRECORD-01	

Proposal causes no interference

#####

Analysis of Interference to Affected Station 27

Analysis of current record

Channel	Call	City/State	Application	Ref. No.
43	WLEP-LD	ERIE PA	USERRECORD-01	

Stations Potentially Affecting This Station

Chan	Call	City/State	Dist(km)	Status	Application	Ref. No.
43	WTVS	DETROIT MI	260.1	LIC	BLEDT	-20001117ABV
43	WTVS	DETROIT MI	260.1	PLN	DTVPLN	-DTVP1541
43	WTVS	DETROIT MI	260.1	CP	BPEDT	-20080620AAL
43	WNED-TV	BUFFALO NY	144.4	LIC	BLEDT	-20030812AAJ
43	WNED-TV	BUFFALO NY	144.4	PLN	DTVPLN	-DTVP1548
43	W47AB	MANSFIELD OH	250.5	APP	BDISDTT	-20090716ABH
43	W43CO-D	KINGSTON PA	355.6	CP	BDCCDTL	-20061030AGG
43	WPGH-TV	PITTSBURGH PA	171.7	CP MOD	BMPEDT	-20021216AAS
43	WPGH-TV	PITTSBURGH PA	171.7	PLN	DTVPLN	-DTVP1552
43	WPGH-TV	PITTSBURGH PA	171.7	LIC	BLCDT	-20021216AAT
43	WAZM-LD	STAUNTON-WAYNESBORO VA	419.8	CP	BDCCDTL	-20061030AAA
44	WXOX-LP	CLEVELAND OH	153.9	APP	BDFCDTL	-20080221ACU
44	W58AM	YOUNGSTOWN OH	117.0	CP	BDISDTT	-20060331ARW

Total scenarios = 18

Result key: 52
 Scenario 1 Affected station 27 WLEP-LD
 Before Analysis

Results for: 43A PA ERIE USERRECORD01 APP
 HAAT 184.0 m, ATV ERP 12.0 kW

	POPULATION	AREA (sq km)
within Noise Limited Contour	282122	5127.2
not affected by terrain losses	281589	5105.3
lost to NTSC IX	0	0.0
lost to additional IX by ATV	14399	257.8

lost to ATV IX only	14399	257.8
lost to all IX	14399	257.8

Potential Interfering Stations Included in above Scenario 1

43A MI DETROIT	BLEDT	20001117ABV	LIC
43A NY BUFFALO	BLEDT	20030812AAJ	LIC
43A PA PITTSBURGH	BMPCDT	20021216AAS	CP

Result key: 53
 Scenario 2 Affected station 27 WLEP-LD
 Before Analysis

Results for: 43A PA ERIE USERRECORD01 APP

HAAT 184.0 m, ATV ERP 12.0 kW	POPULATION	AREA (sq km)
within Noise Limited Contour	282122	5127.2
not affected by terrain losses	281589	5105.3
lost to NTSC IX	0	0.0
lost to additional IX by ATV	14399	257.8
lost to ATV IX only	14399	257.8
lost to all IX	14399	257.8

Potential Interfering Stations Included in above Scenario 2

43A MI DETROIT	BLEDT	20001117ABV	LIC
43A NY BUFFALO	BLEDT	20030812AAJ	LIC
43A PA PITTSBURGH	DTVPLN	DTVP1552	PLN

Result key: 54
 Scenario 3 Affected station 27 WLEP-LD
 Before Analysis

Results for: 43A PA ERIE USERRECORD01 APP

HAAT 184.0 m, ATV ERP 12.0 kW	POPULATION	AREA (sq km)
within Noise Limited Contour	282122	5127.2
not affected by terrain losses	281589	5105.3
lost to NTSC IX	0	0.0
lost to additional IX by ATV	14399	257.8
lost to ATV IX only	14399	257.8
lost to all IX	14399	257.8

Potential Interfering Stations Included in above Scenario 3

43A MI DETROIT	BLEDT	20001117ABV	LIC
43A NY BUFFALO	BLEDT	20030812AAJ	LIC
43A PA PITTSBURGH	BLCDT	20021216AAT	LIC

Result key: 55
 Scenario 4 Affected station 27 WLEP-LD
 Before Analysis

Results for: 43A PA ERIE USERRECORD01 APP

HAAT 184.0 m, ATV ERP 12.0 kW	POPULATION	AREA (sq km)
within Noise Limited Contour	282122	5127.2
not affected by terrain losses	281589	5105.3
lost to NTSC IX	0	0.0
lost to additional IX by ATV	14399	257.8
lost to ATV IX only	14399	257.8
lost to all IX	14399	257.8

Potential Interfering Stations Included in above Scenario 4

43A MI DETROIT	BLEDT	20001117ABV	LIC
43A NY BUFFALO	DTVPLN	DTVP1548	PLN
43A PA PITTSBURGH	BMPCDT	20021216AAS	CP

Result key: 56
 Scenario 5 Affected station 27 WLEP-LD

Before Analysis

Results for: 43A PA ERIE		USERRECORD01	APP
HAAT	184.0 m, ATV ERP	12.0 kW	
	POPULATION	AREA (sq km)	
within Noise Limited Contour	282122	5127.2	
not affected by terrain losses	281589	5105.3	
lost to NTSC IX	0	0.0	
lost to additional IX by ATV	14399	257.8	
lost to ATV IX only	14399	257.8	
lost to all IX	14399	257.8	

Potential Interfering Stations Included in above Scenario 5

43A MI DETROIT	BLEDT	20001117ABV	LIC
43A NY BUFFALO	DTVPLN	DTVP1548	PLN
43A PA PITTSBURGH	DTVPLN	DTVP1552	PLN

Result key: 57
Scenario 6 Affected station 27 WLEP-LD
Before Analysis

Results for: 43A PA ERIE		USERRECORD01	APP
HAAT	184.0 m, ATV ERP	12.0 kW	
	POPULATION	AREA (sq km)	
within Noise Limited Contour	282122	5127.2	
not affected by terrain losses	281589	5105.3	
lost to NTSC IX	0	0.0	
lost to additional IX by ATV	14399	257.8	
lost to ATV IX only	14399	257.8	
lost to all IX	14399	257.8	

Potential Interfering Stations Included in above Scenario 6

43A MI DETROIT	BLEDT	20001117ABV	LIC
43A NY BUFFALO	DTVPLN	DTVP1548	PLN
43A PA PITTSBURGH	BLCDT	20021216AAT	LIC

Result key: 58
Scenario 7 Affected station 27 WLEP-LD
Before Analysis

Results for: 43A PA ERIE		USERRECORD01	APP
HAAT	184.0 m, ATV ERP	12.0 kW	
		POPULATION	AREA (sq km)
within Noise Limited Contour		282122	5127.2
not affected by terrain losses		281589	5105.3
lost to NTSC IX		0	0.0
lost to additional IX by ATV		14399	257.8
lost to ATV IX only		14399	257.8
lost to all IX		14399	257.8

Potential Interfering Stations Included in above Scenario 7

43A MI DETROIT	DTVPLN	DTVP1541	PLN
43A NY BUFFALO	BLEDT	20030812AAJ	LIC
43A PA PITTSBURGH	BMPCDT	20021216AAS	CP

Result key: 59
Scenario 8 Affected station 27 WLEP-LD
Before Analysis

Results for: 43A PA ERIE		USERRECORD01	APP
HAAT	184.0 m, ATV ERP	12.0 kW	
		POPULATION	AREA (sq km)
within Noise Limited Contour		282122	5127.2
not affected by terrain losses		281589	5105.3
lost to NTSC IX		0	0.0
lost to additional IX by ATV		14399	257.8
lost to ATV IX only		14399	257.8
lost to all IX		14399	257.8

Potential Interfering Stations Included in above Scenario 8

43A MI DETROIT	DTVPLN	DTVP1541	PLN
43A NY BUFFALO	BLEDT	20030812AAJ	LIC
43A PA PITTSBURGH	DTVPLN	DTVP1552	PLN

Result key: 60
 Scenario 9 Affected station 27 WLEP-LD
 Before Analysis

Results for: 43A PA ERIE	USERRECORD01	APP
HAAT 184.0 m, ATV ERP 12.0 kW		
	POPULATION	AREA (sq km)
within Noise Limited Contour	282122	5127.2
not affected by terrain losses	281589	5105.3
lost to NTSC IX	0	0.0
lost to additional IX by ATV	14399	257.8
lost to ATV IX only	14399	257.8
lost to all IX	14399	257.8

Potential Interfering Stations Included in above Scenario 9

43A MI DETROIT	DTVPLN	DTVP1541	PLN
43A NY BUFFALO	BLEDT	20030812AAJ	LIC
43A PA PITTSBURGH	BLCDT	20021216AAT	LIC

Result key: 61
 Scenario 10 Affected station 27 WLEP-LD
 Before Analysis

Results for: 43A PA ERIE	USERRECORD01	APP
HAAT 184.0 m, ATV ERP 12.0 kW		
	POPULATION	AREA (sq km)
within Noise Limited Contour	282122	5127.2
not affected by terrain losses	281589	5105.3
lost to NTSC IX	0	0.0
lost to additional IX by ATV	14399	257.8
lost to ATV IX only	14399	257.8
lost to all IX	14399	257.8

Potential Interfering Stations Included in above Scenario 10

43A MI DETROIT	DTVPLN	DTVP1541	PLN
43A NY BUFFALO	DTVPLN	DTVP1548	PLN
43A PA PITTSBURGH	BMPCDT	20021216AAS	CP

Result key: 62
 Scenario 11 Affected station 27 WLEP-LD
 Before Analysis

Results for: 43A PA ERIE	USERRECORD01	APP
HAAT 184.0 m, ATV ERP 12.0 kW		
	POPULATION	AREA (sq km)
within Noise Limited Contour	282122	5127.2
not affected by terrain losses	281589	5105.3
lost to NTSC IX	0	0.0
lost to additional IX by ATV	14399	257.8
lost to ATV IX only	14399	257.8
lost to all IX	14399	257.8

Potential Interfering Stations Included in above Scenario 11

43A MI DETROIT	DTVPLN	DTVP1541	PLN
43A NY BUFFALO	DTVPLN	DTVP1548	PLN
43A PA PITTSBURGH	DTVPLN	DTVP1552	PLN

Result key: 63
 Scenario 12 Affected station 27 WLEP-LD
 Before Analysis

KHANNA & GUILL, Inc. – Consulting Engineers

```

Results for: 43A PA ERIE                                USERRECORD01      APP
      HAAT 184.0 m, ATV ERP   12.0 kW

```

	POPULATION	AREA (sq km)
within Noise Limited Contour	282122	5127.2
not affected by terrain losses	281589	5105.3
lost to NTSC IX	0	0.0
lost to additional IX by ATV	14399	257.8
lost to ATV IX only	14399	257.8
lost to all IX	14399	257.8

Potential Interfering Stations Included in above Scenario 12

43A MI DETROIT	DTVPLN	DTVP1541	PLN
43A NY BUFFALO	DTVPLN	DTVP1548	PLN
43A PA PITTSBURGH	BLCDT	20021216AAT	LIC

```
Result key:      64
Scenario        13 Affected station      27 WLEP-LD
Before Analysis
```

```
Results for: 43A PA ERIE                                USERRECORD01      APP
      HAAT 184.0 m, ATV ERP    12.0 kW
```

	POPULATION	AREA (sq km)
within Noise Limited Contour	282122	5127.2
not affected by terrain losses	281589	5105.3
lost to NTSC IX	0	0.0
lost to additional IX by ATV	15538	262.7
lost to ATV IX only	15538	262.7
lost to all IX	15538	262.7

Potential Interfering Stations Included in above Scenario 13

43A MI DETROIT	BPEDT	20080620AAL	CP
43A NY BUFFALO	BLEDT	20030812AAJ	LIC
43A PA PITTSBURGH	BMPCDT	20021216AAS	CP

Result key: 65
Scenario 14 Affected station 27 WLEP-LD
Before Analysis

```

Results for: 43A PA ERIE                                USERRECORD01      APP
             HAAT 184.0 m, ATV ERP   12.0 kW

```

	POPULATION	AREA (sq km)
within Noise Limited Contour	282122	5127.2
not affected by terrain losses	281589	5105.3
lost to NTSC IX	0	0.0
lost to additional IX by ATV	15538	262.7
lost to ATV IX only	15538	262.7
lost to all IX	15538	262.7

Potential Interfering Stations Included in above Scenario 14

43A MI DETROIT	BPEDT	20080620AAL	CP
43A NY BUFFALO	BLEDT	20030812AAJ	LIC
43A PA PITTSBURGH	DTVPLN	DTVPL552	PLN

Result key: 66
Scenario 15 Affected station 27 WLEP-LD
Before Analysis

Results for: 43A PA ERIE USERRECORD01 APP
HAAT 184.0 m, ATV ERP 12.0 kW

	POPULATION	AREA (sq km)
within Noise Limited Contour	282122	5127.2
not affected by terrain losses	281589	5105.3
lost to NTSC IX	0	0.0
lost to additional IX by ATV	15538	262.7
lost to ATV IX only	15538	262.7
lost to all IX	15538	262.7

Potential Interfering Stations Included in above Scenario 15

43A MI DETROIT	BPEDT	20080620AAL	CP
43A NY BUFFALO	BLEDT	20030812AAJ	LIC
43A PA PITTSBURGH	BLCDT	20021216AAT	LIC

Result key: 67
 Scenario 16 Affected station 27 WLEP-LD
 Before Analysis

Results for: 43A PA ERIE USERRECORD01 APP
 HAAT 184.0 m, ATV ERP 12.0 kW

	POPULATION	AREA (sq km)
within Noise Limited Contour	282122	5127.2
not affected by terrain losses	281589	5105.3
lost to NTSC IX	0	0.0
lost to additional IX by ATV	15538	262.7
lost to ATV IX only	15538	262.7
lost to all IX	15538	262.7

Potential Interfering Stations Included in above Scenario 16

43A MI DETROIT	BPEDT	20080620AAL	CP
43A NY BUFFALO	DTVPLN	DTVP1548	PLN
43A PA PITTSBURGH	BMPCDT	20021216AAS	CP

Result key: 68
 Scenario 17 Affected station 27 WLEP-LD
 Before Analysis

Results for: 43A PA ERIE USERRECORD01 APP
 HAAT 184.0 m, ATV ERP 12.0 kW

	POPULATION	AREA (sq km)
within Noise Limited Contour	282122	5127.2
not affected by terrain losses	281589	5105.3
lost to NTSC IX	0	0.0
lost to additional IX by ATV	15538	262.7
lost to ATV IX only	15538	262.7
lost to all IX	15538	262.7

Potential Interfering Stations Included in above Scenario 17

43A MI DETROIT	BPEDT	20080620AAL	CP
43A NY BUFFALO	DTVPLN	DTVP1548	PLN
43A PA PITTSBURGH	DTVPLN	DTVP1552	PLN

Result key: 69
 Scenario 18 Affected station 27 WLEP-LD
 Before Analysis

Results for: 43A PA ERIE USERRECORD01 APP
 HAAT 184.0 m, ATV ERP 12.0 kW

	POPULATION	AREA (sq km)
within Noise Limited Contour	282122	5127.2
not affected by terrain losses	281589	5105.3
lost to NTSC IX	0	0.0
lost to additional IX by ATV	15538	262.7
lost to ATV IX only	15538	262.7
lost to all IX	15538	262.7

Potential Interfering Stations Included in above Scenario 18

43A MI DETROIT	BPEDT	20080620AAL	CP
43A NY BUFFALO	DTVPLN	DTVP1548	PLN
43A PA PITTSBURGH	BLCDT	20021216AAT	LIC

#####

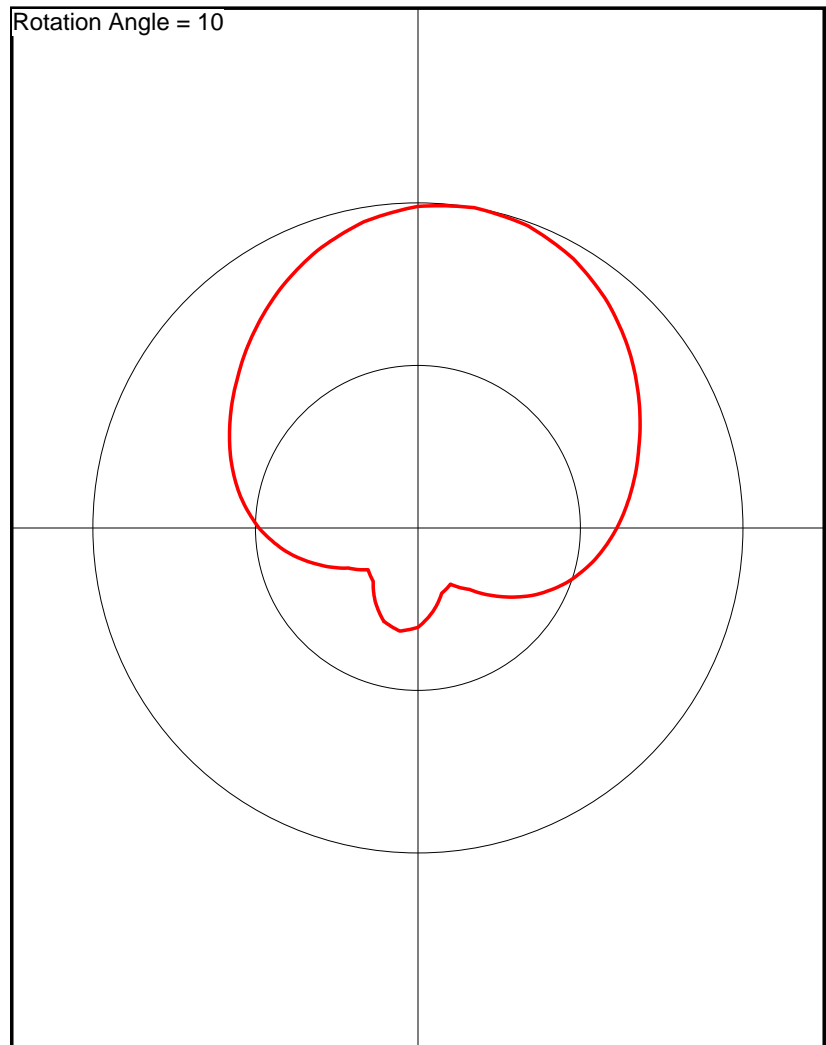
FINISHED FINISHED FINISHED FINISHED FINISHED FINISHED

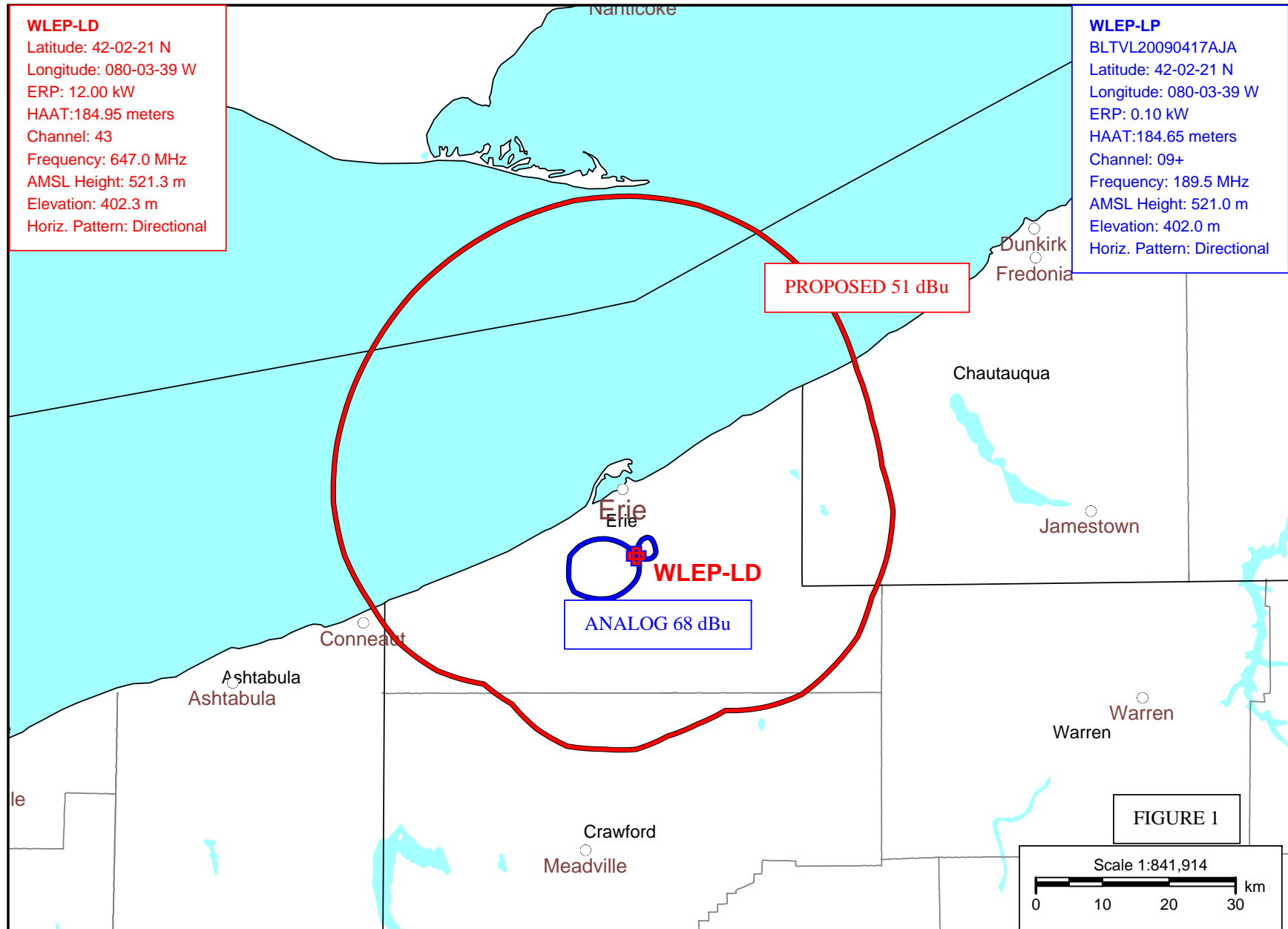
WLEP-LD Antenna Pattern

Pre-Rotation Antenna Pattern....

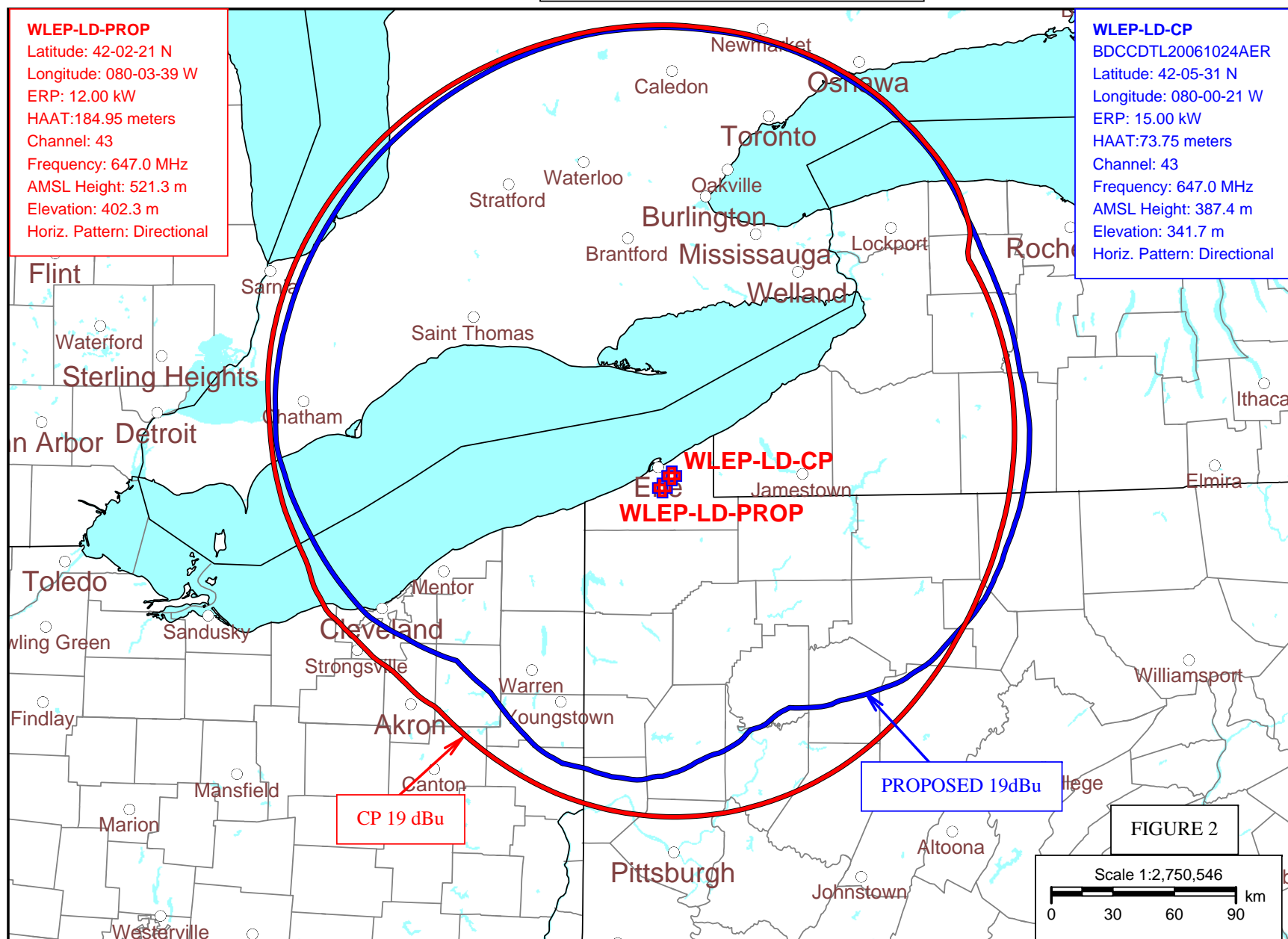
Azimuth (deg)	Effective Field
0.0	1.000
10.0	0.989
20.0	0.956
30.0	0.907
40.0	0.848
50.0	0.785
60.0	0.723
70.0	0.667
80.0	0.612
90.0	0.554
100.0	0.489
110.0	0.413
120.0	0.328
130.0	0.247
140.0	0.200
150.0	0.214
160.0	0.262
170.0	0.306
180.0	0.322
190.0	0.306
200.0	0.262
210.0	0.214
220.0	0.200
230.0	0.247
240.0	0.328
250.0	0.413
260.0	0.489
270.0	0.554
280.0	0.612
290.0	0.667
300.0	0.723
310.0	0.785
320.0	0.848
330.0	0.907
340.0	0.956
350.0	0.989

Rotation Angle = 10





COMPUTED CONTOURS FOR THE LPTV OPERATION OF WLEP-LD, ERIE, PENNSYLVANIA



COMPUTED CONTOURS FOR THE LPTV OPERATION OF WLEP-LD, ERIE, PENNSYLVANIA