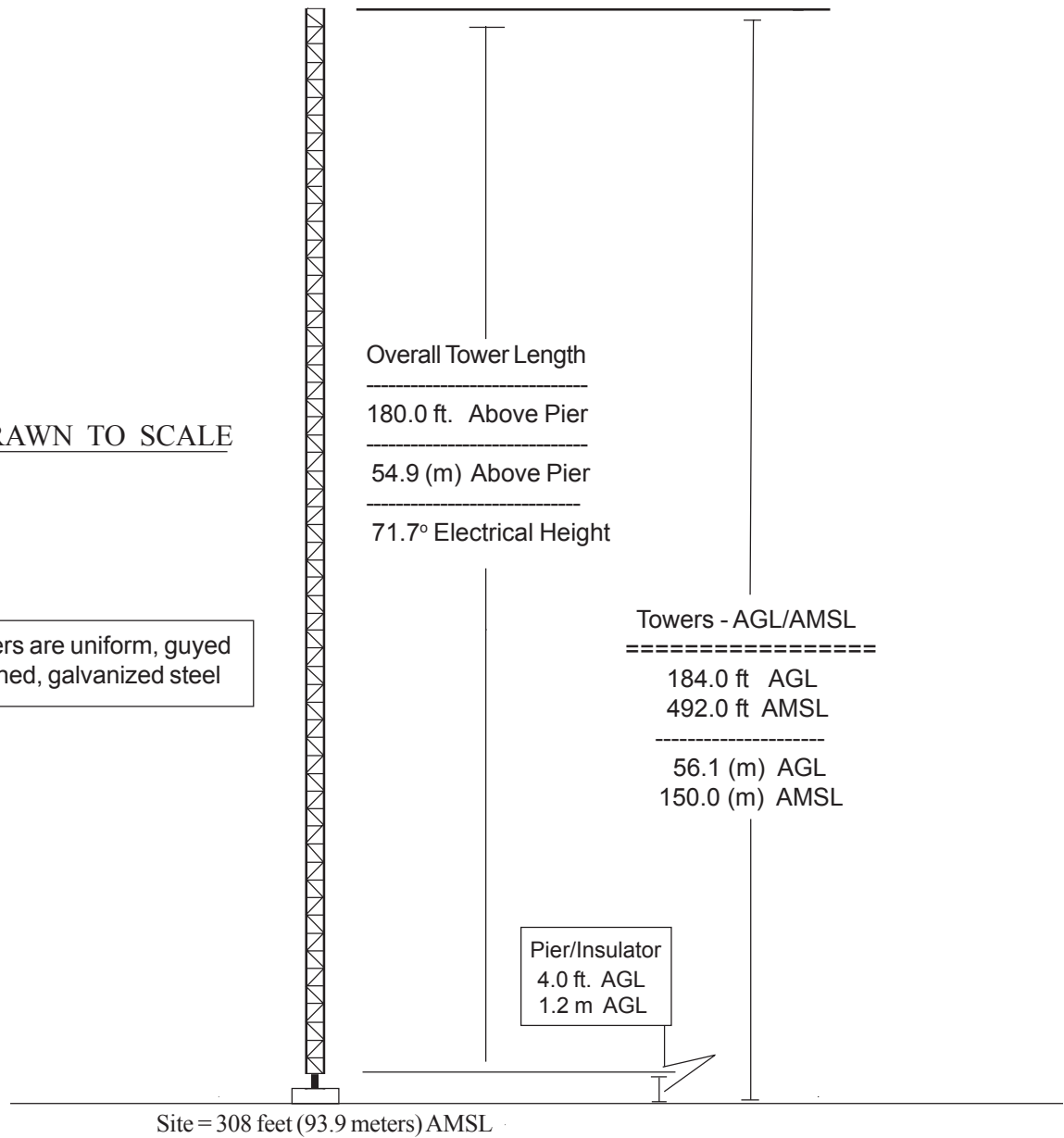


## VERTICAL PLAN SKETCH FOR ALL PROPOSED KRCM TOWERS

NOT DRAWN TO SCALE

Note: All towers are uniform, guyed  
cross-sectioned, galvanized steel



**DAIJ Media, LLC, Licensee**  
**December, 2011**  
**Seeks: Minor Change in Licensed Facilities**  
**1380 kHz, Shenandoah, Texas**

## TOWAIR Determination Results

### \*\*\* NOTICE \*\*\*

TOWAIR's findings are not definitive or binding, and we cannot guarantee that the data in TOWAIR are fully current and accurate. In some instances, TOWAIR may yield results that differ from application of the criteria set out in 47 C.F.R. Section 17.7 and 14 C.F.R. Section 77.13. A positive finding by TOWAIR recommending notification should be given considerable weight. On the other hand, a finding by TOWAIR recommending either for or against notification is not conclusive. It is the responsibility of each ASR participant to exercise due diligence to determine if it must coordinate its structure with the FAA. TOWAIR is only one tool designed to assist ASR participants in exercising this due diligence, and further investigation may be necessary to determine if FAA coordination is appropriate.

#### DETERMINATION Results

**Structure does not require registration. There are no airports within 8 kilometers (5 miles) of the coordinates you provided.**

#### Your Specifications

##### NAD83 Coordinates

Latitude	30-07-40.0 north
Longitude	095-57-35.0 west

##### Measurements (Meters)

Overall Structure Height (AGL)	56.1
Support Structure Height (AGL)	56.1
Site Elevation (AMSL)	93.9

##### Structure Type

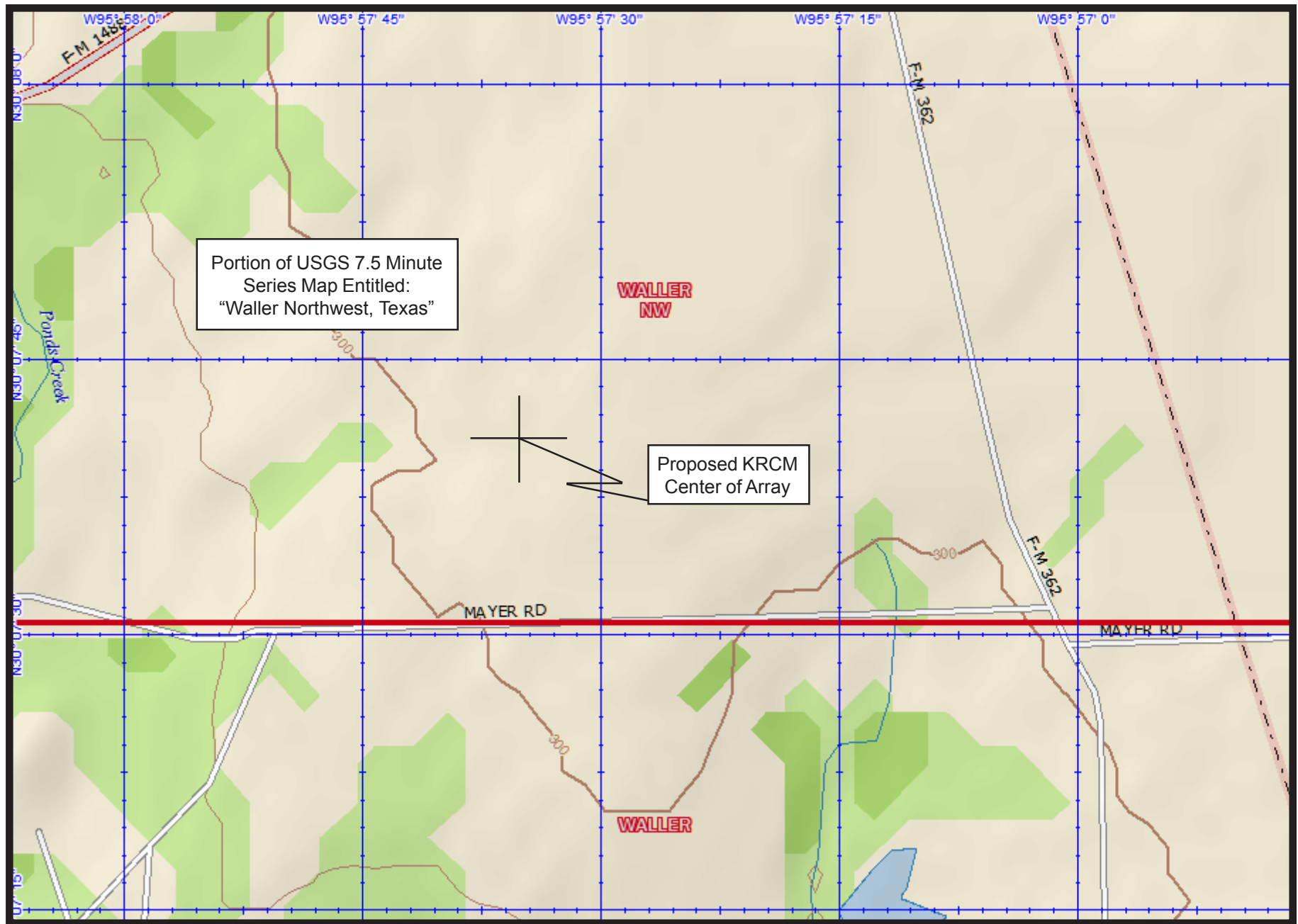
TOWER - Free standing or Guyed Structure used for Communications Purposes

#### [Tower Construction Notifications](#)

Notify Tribes and Historic Preservation Officers of your plans to build a tower.

CLOSE WINDOW

### Portion of USGS Map Indicating Proposed KRCM Center of Array at Waller, Texas



Aerial Photograph of Proposed KRCM Transmitter  
Site - Center of Array at Waller, Texas



**Land Required For KRCM Transmitter Site  
1380 kHz, Shenandoah, Texas**

470 Feet East/West

