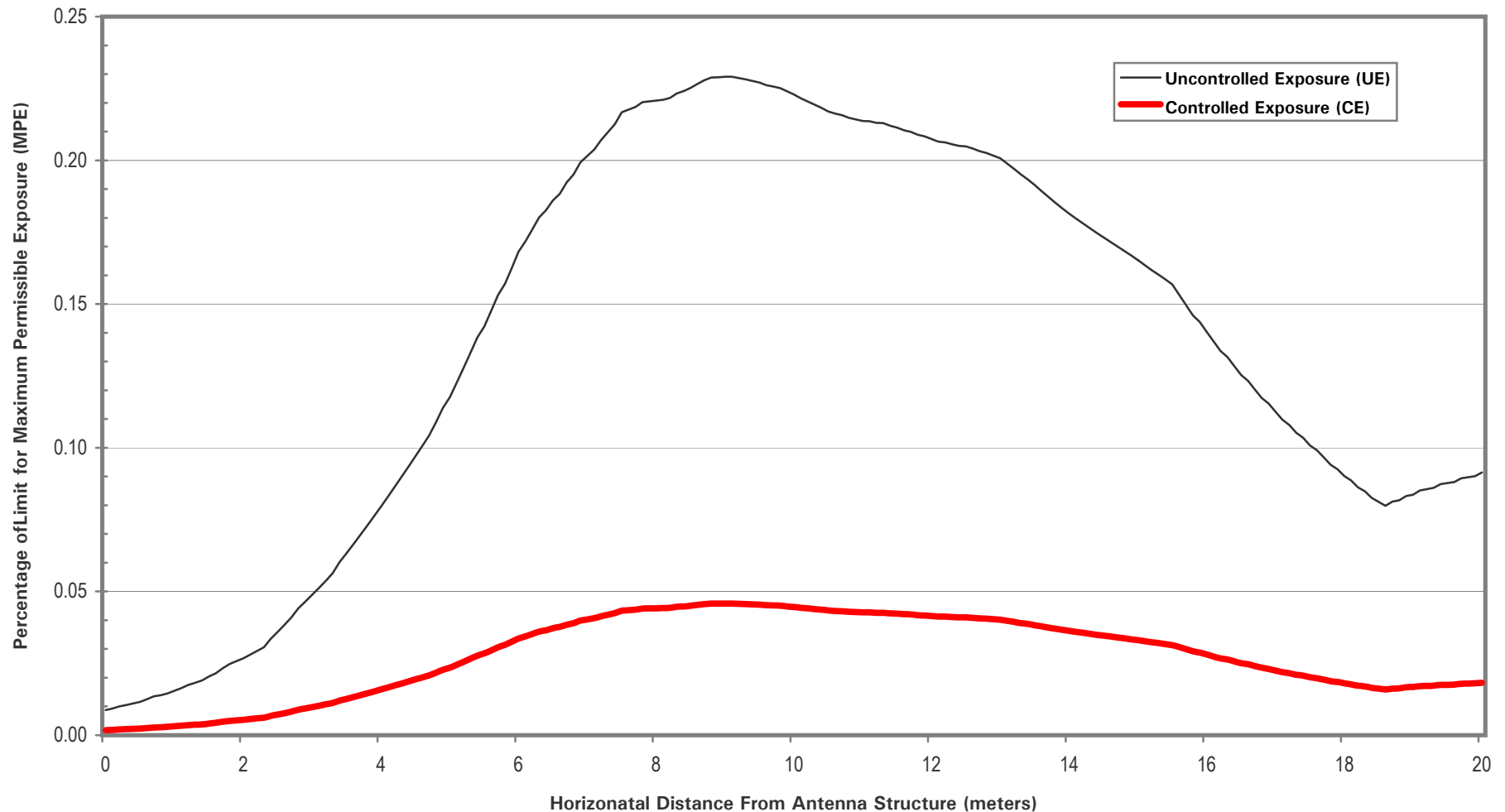


**ESTIMATED GROUND LEVEL EXPOSURE**  
**(FCC OET Bulletin 65, ed. 97-01, Prediction Methodology)**



STATION INFORMATION		ANTENNA TYPE		ANALYSIS PARAMETERS		MPE LIMITS ( $\mu\text{W}/\text{cm}^2$ )	
Call Sign:	K43DI	Make & Model:	SCA 4DR-4-2HW	FM antenna elements:		General / UE:	429
Location:	Canyonville, OR	Vertical pattern / equivalent:	SCA_4DR-4-2HW_UHF	>> Element spacing( $\lambda$ ):		Occupational / CE:	2,147
Service:	LD	SITE DESCRIPTION		Total avg power (W):	132	COMPLIANCE SUMMARY	
Frequency(MHz):	644			Antenna RCAGL(m):	15.0		
(P)eak or (A)vg power:	A	Accessible to public:	Not reported	Exposure ht. AGL(m):	2	Peak power density ( $\mu\text{W}/\text{cm}^2$ ):	1.0
ERP in Watts (H+V):	132	UE analysis:	Yes	Ground reflection factor:	2.56	>> Horizontal distance(m):	9.1
TV Aural ERP(%):	0	Grade (slope/meter):	0	Isotropic factor:	1.64	Percentage of UE limit:	0.23%
Azimuthal direction (°):	All			>> Resultant multiplier	33.41	Percentage of CE limit:	0.05%