

**Exhibit 13.1 - Copy of Existing
Antenna Structure Registration****Registration Detail**

Reg Number	1028013	Status	Constructed
File Number	A0033239	Constructed	05/21/1997
FAA Study	94-ANE-061-OE	EMI	No
FAA Issue Date	03/21/1994	NEPA	No

Antenna Structure

Structure Type TOWER - Free standing or Guyed Structure used for Communications Purposes

Location (in NAD83 Coordinates)

Lat/Long 42-21-49.0 N 072-25-22.0 W SUMMIT OF MOUNT LINCOLN

City, State PELHAM , MA

Center of
AM Array

Heights (meters)

Elevation of Site Above Mean Sea Level	Overall Height Above Ground (AGL)
377.3	106.4
Overall Height Above Mean Sea Level	Overall Height Above Ground w/o Appurtenances
483.7	105.5

Painting and Lighting Specifications

FAA Chapters 3, 4, 5, 13

Paint and Light in Accordance with FAA Circular Number 70/7460-1H

Owner & Contact Information

FRN	Licensee ID
-----	-------------

Owner

UNIVERSITY OF MASSACHUSETTS DBA = WFCR	P: (413)545-0100
Attention To: MARTIN MILLER	E:
HAMPSHIRE HOUSE	
AMHERST , MA 01003-3630	

Contact

P:

E:

Last Action Status

Status	Constructed	Received	08/20/1997
Purpose	New	Entered	08/20/1997
Mode	Interactive		

Related Applications

08/20/1997	A0033239 - New (NE)
------------	---------------------

Comments**Comments**

None

Automated Letters

None



Exhibit 13.2

Vertical Plan of Antenna System

The site is located at the summit of Mount Lincoln,
the city of Pelham, Hampshire County, Massachusetts.

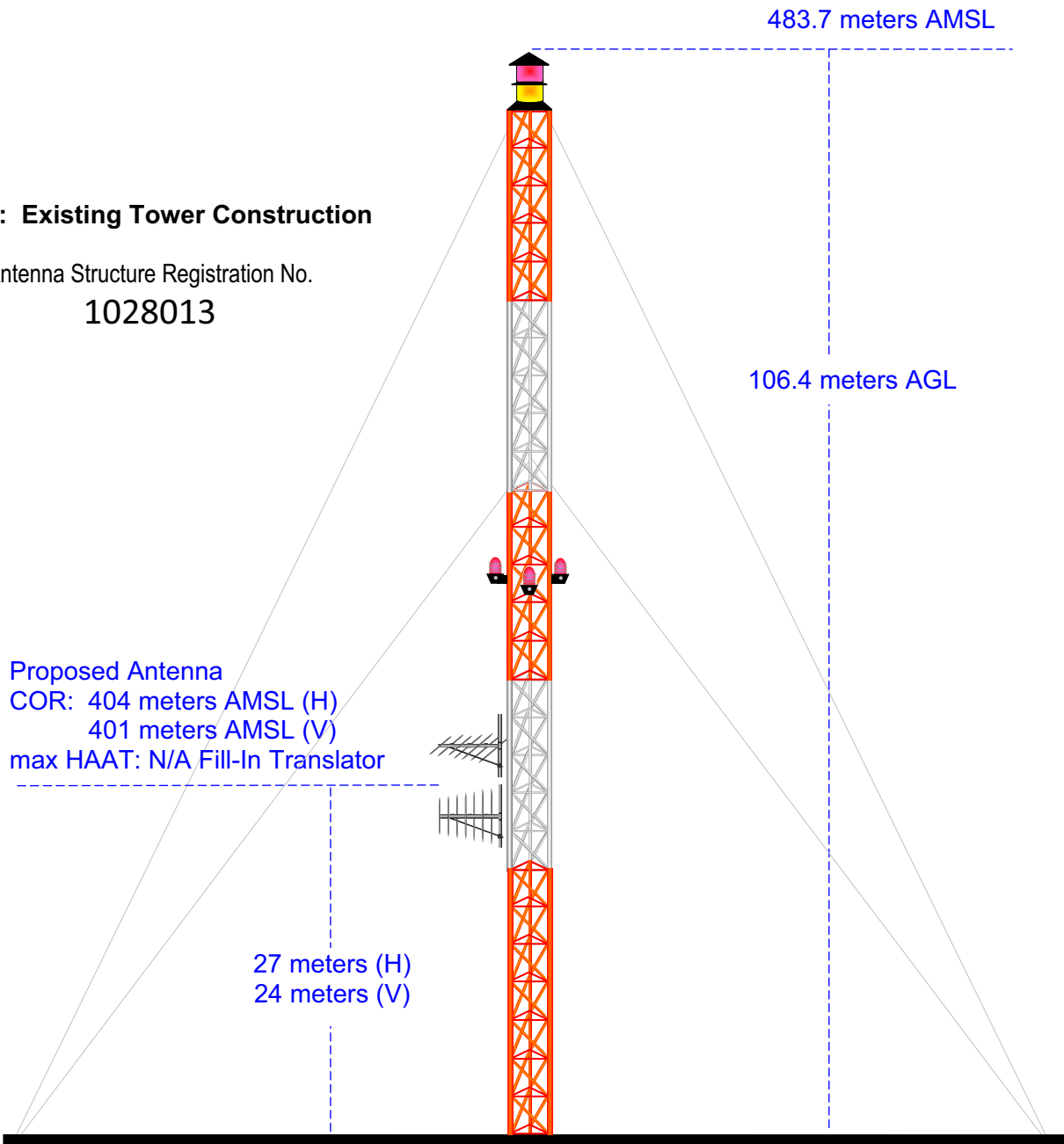
Site Location (NAD 27)

NL: 42° 21' 49"

WL: 72° 25' 24"

NOTE: Existing Tower Construction

Antenna Structure Registration No.
1028013



Ground Elevation = 377.3 m AMSL
Drawing is not to Scale

MUNN-REESE, INC.
Broadcast Engineering Consultants
Coldwater, MI 49036

Exhibit 13.3 Present vs. Proposed Service Contour Study

W232BW.P
Proposed Operation
Latitude: 42-21-49 N
Longitude: 072-25-24 W
ERP: 0.20 kW
Channel: 232
Frequency: 94.3 MHz
AMSL Height: 404.0 m
Horiz. Pattern: Directional
Vert. Pattern: No
Prop Model: None

60 dBu Contour
Total Population: 60,809
Total Area: 373 sq. km

W232BW.L
BLFT-20091208AAX
Latitude: 42-21-49 N
Longitude: 072-25-24 W
ERP: 0.059 kW
Channel: 232
Frequency: 94.3 MHz
AMSL Height: 404.0 m
Horiz. Pattern: Directional
Vert. Pattern: No
Prop Model: None

60 dBu Contour
Total Population: 42,844
Total Area: 200 sq. km

Terrain
26 557 m

NGDC 30 Sec Terrain Database
US Census 2000 SF-1 Database

W232BW.L
W232BW.P
+

Scale 1:150,000
0 2 4 6 km



Belchertown

V-Soft Communications LLC ©

W232BW.P
Proposed Operation
Latitude: 42-21-49 N
Longitude: 072-25-24 W
ERP: 0.20 kW
Channel: 232
Frequency: 94.3 MHz
AMSL Height: 404.0 m
Horiz. Pattern: Directional
Vert. Pattern: No
Prop Model: None

Exhibit 13.4 Proposed vs. Primary Service Contour Study

WLZX.L
BLH20000112ABC
Latitude: 42-22-25 N
Longitude: 072-40-26 W
ERP: 5.80 kW
Channel: 257
Frequency: 99.3 MHz
AMSL Height: 268.0 m
Horiz. Pattern: Omni
Vert. Pattern: No
Prop Model: None

Terrain
2 1057 m

NGDC 30 Sec Terrain Database
US Census 2000 SF-1 Database

Primary 60 dBu Contour

Proposed 60 dBu Contour

WLZX.L

W232BW.P

MUNN-REESE, INC.
Broadcast Engineering Consultants
Coldwater, MI 49036
1(517)278-7339

Scale 1:375,000
0 5 10 15 km

V-Soft Communications LLC ©

Exhibit 13.5

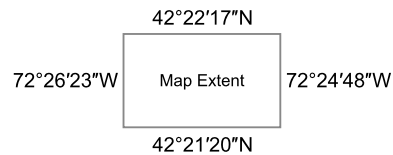
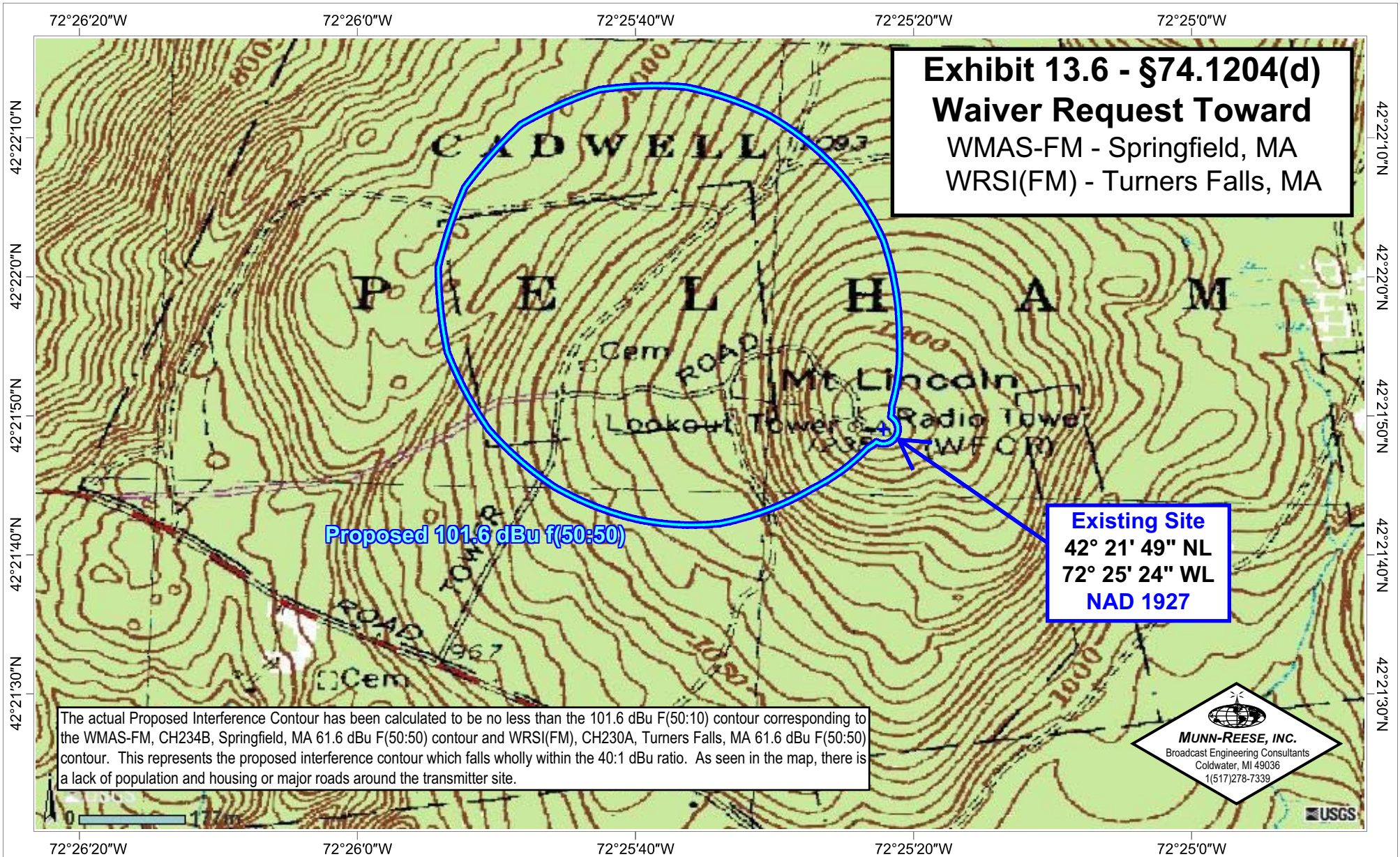
Tabulation of Proposed Allocation

Munn-Reese, Inc.
Coldwater, MI 49036

Saga Communications Of New England, Llc											
REFERENCE CH# 232D - 94.3 MHz, Pwr= 0.2 kw DA, HAAT= 230.1 M, COR= 404 M											
Average Protected F(50-50)= 6.71 km											
Standard Directional											
DISPLAY DATES											
DATA 10-30-10											
SEARCH 11-02-10											
CH	CALL	TYPE	ANT	AZI	DIST	LAT	PWR(kw)	INT(km)	PRO(km)	*IN*	*OUT*
CITY	STATE			<--	FILE #	LNG	HAAT(M)	COR(M)	LICENSEE	(Overlap	in km)
234B WMAS-FM Springfield	LIC _CN MA	208.8 28.7	32.3 BLH19801010AD	42 06 32.0 72 36 44.0	50.000 59	3.7 121	46.9 Radio License Holding Cbc,	26.0 -14.7*<			
230A WRSI Turners Falls	LIC _CN MA	323.7 143.6	23.5 BLH19951018KB	42 32 01.0 72 35 34.0	2.500 109	2.4 284	27.0 Saga Communications Of Ne	3.6 -4.4*<			
232A WBTN-FM Bennington	LIC NCX VT	316.8 136.3	89.6 BLED20091027ACA	42 56 52.9 73 10 33.9	3.000 34	53.3 474	13.2 Vermont Public Radio	17.5 17.6			
233B WJMN Boston	LIC _CX MA	93.2 274.0	99.0 BLH20031201AWA	42 18 27.0 71 13 27.0	9.200 353	77.1 394	65.6 Amfm Radio Licenses, L.L.c	19.2 27.5			
229B WZMX Hartford	LIC _CX CT	201.5 21.2	95.6 BMLH20080306AAR	41 33 44.0 72 50 42.0	17.000 259	5.7 359	66.2 Cbs Radio Stations Inc.	87.4 29.4			
231B WHJY Providence	LIC _C_ RI	124.1 304.8	105.6 BLH20000915ALB	41 49 40.0 71 22 09.0	50.000 139	71.7 170	59.0 Capstar Tx Llc	31.3 40.5			
233D W233AR Brattleboro	LIC _C_ VT	344.6 164.5	53.7 BLFT20041215ABH	42 49 44.0 72 35 52.0	0.010	7.3 307	5.2 Vermont Public Radio	35.5 32.8			
235D W235AV Tatnuck	LIC DC_ MA	97.9 278.2	43.1 BLFT20070725AAR	42 18 34.0 71 54 13.0	0.230	0.2 474	6.7 Amfm Radio Licenses, L.L.c	40.6 36.4			
285A WYRY Hinsdale	LIC DC_ NH	356.8 176.8	45.9 BLH20010402AAV	42 46 33.0 72 27 17.0	4.100 122	34.1 344	31.3 Tri-valley Broadcasting Co	9.5R 36.4M			
232D W232AJ Greenville, Etc. TRANSLATOR FOR WBFL, BELLOWS FALLS, VT.	LIC ?CN NH	38.7 219.1	70.6 BLFT19881108TI	42 51 28.0 71 52 53.0	0.005 416	31.0 713	9.1 Harvest Broadcasting Assn.	37.2 52.6			
232A WYBC-FM New Haven	LIC DE_ CT	202.2 21.8	121.5 BLH20010918AAT	41 20 59.0 72 58 23.0	3.000 144	79.8 215	26.5 Yale Broadcasting Company,	39.2 83.3			
232A WKXP Kingston	LIC _CX NY	248.6 67.6	139.8 BLH20040120ADV	41 53 44.0 73 59 32.0	2.250 166	81.5 260	28.0 Cumulus Licensing Llc	41.5 57.4			
231D 637124 Keene	APP _C_ NH	7.1 187.1	61.9 BNPFT20030317BLE	42 54 57.0 72 19 48.0	0.010	12.3 437	8.7 Educational Media Foundati	44.1 45.5			
231D 630982 Brattleboro	APP _C_ VT	347.8 167.7	69.5 BNPFT20030317HKS	42 58 28.0 72 36 12.0	0.010	15.2 514	10.8 Vermont Public Radio	44.5 45.1			
234D W234AL North Adams	LIC _C_ MA	303.8 123.3	68.3 BLFT20061025ABP	42 42 10.0 73 07 04.0	0.050	0.5 224	4.7 Northeast Gospel Broadcast	45.7 62.6			

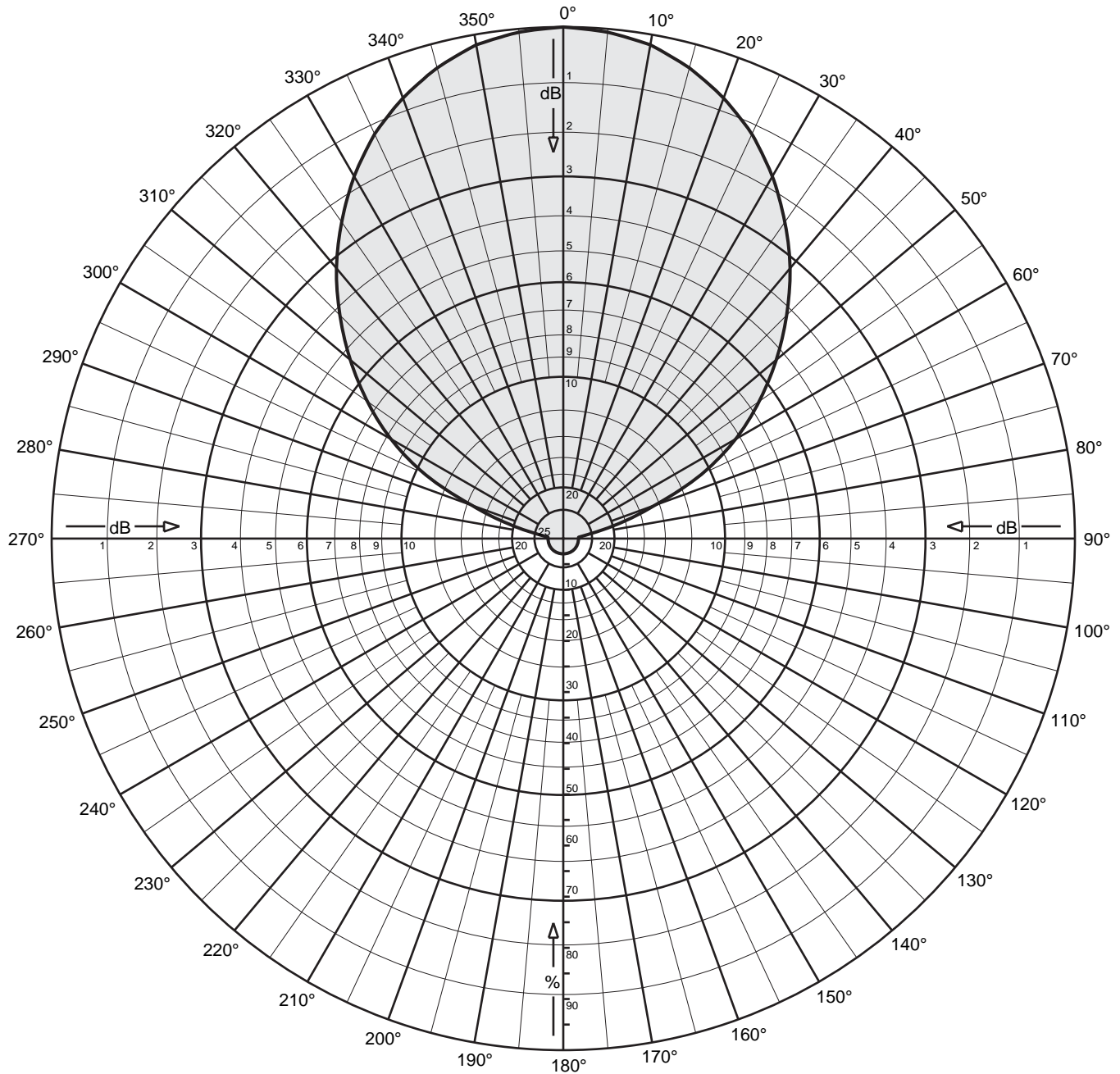
Terrain database is NGDC 30 SEC , R= 73.215 qualifying spacings or FCC minimum Spacings in KM, M= Margin in KM
Contour distances are on direct line to and from reference station. Reference zone = 1, Co to 3rd adjacent.
Ant Column: (D= DA Standard, Z= DA 73.215, N= Not DA 73.215, _= Omni), Polarization (C,H,V,E), Beamtilt(Y,N,X)
"*"affixed to 'IN' or 'OUT' values = site inside protected contour.
< = Contour Overlap

Blue highlighted text denotes a §74.1204(d) Second Adjacent Channel Given Interference Waiver Request toward WMAS-FM, Springfield, MA and WRSI(FM) as included in Exhibit 13.6. Full protection will be afforded both facilities as the proposed interference area is void of population, housing or major roads as noted in the attached exhibit.



Geographic Coordinate System (WGS84)

Exhibit 13.7 Tabulation of Proposed Directional Antenna (Antenna Rotation: 300.0°T)



CL-FM Log-periodic

FM

Maximum gain: 7.0 dBd

Vertical polarization

Horizontal radiation pattern

0 degree electrical downtilt



Exhibit 13.7 Tabulation of Proposed Directional Antenna (Antenna Rotation: 300.0°T)



CL-FM Log-periodic

FM

Maximum gain: 7.0 dBd

Vertical polarization

Horizontal radiation pattern

0 degree electrical downtilt

Angle	Field	Rel.dB	dBd	PwrMult	Angle	Field	Rel.dB	dBd	PwrMult
0	1.000	0.00	7.00	5.01	45	0.618	-4.19	2.81	1.91
1	0.998	-0.01	6.99	5.00	46	0.602	-4.40	2.60	1.82
2	0.997	-0.02	6.98	4.99	47	0.588	-4.61	2.39	1.73
3	0.996	-0.03	6.97	4.97	48	0.573	-4.84	2.16	1.65
4	0.995	-0.04	6.96	4.96	49	0.558	-5.06	1.94	1.56
5	0.993	-0.06	6.94	4.95	50	0.544	-5.30	1.70	1.48
6	0.991	-0.08	6.92	4.92	51	0.528	-5.54	1.46	1.40
7	0.988	-0.10	6.90	4.89	52	0.513	-5.80	1.20	1.32
8	0.985	-0.13	6.87	4.87	53	0.498	-6.06	0.94	1.24
9	0.982	-0.15	6.85	4.84	54	0.483	-6.33	0.67	1.17
10	0.980	-0.18	6.82	4.81	55	0.467	-6.60	0.40	1.10
11	0.975	-0.22	6.78	4.76	56	0.452	-6.90	0.10	1.02
12	0.969	-0.27	6.73	4.71	57	0.436	-7.20	-0.20	0.95
13	0.964	-0.32	6.68	4.65	58	0.421	-7.51	-0.51	0.89
14	0.958	-0.37	6.63	4.60	59	0.405	-7.84	-0.84	0.82
15	0.952	-0.42	6.58	4.55	60	0.390	-8.18	-1.18	0.76
16	0.946	-0.49	6.51	4.48	61	0.372	-8.59	-1.59	0.69
17	0.938	-0.56	6.44	4.41	62	0.354	-9.02	-2.02	0.63
18	0.931	-0.62	6.38	4.34	63	0.336	-9.47	-2.47	0.57
19	0.923	-0.69	6.31	4.27	64	0.318	-9.95	-2.95	0.51
20	0.916	-0.76	6.24	4.21	65	0.300	-10.46	-3.46	0.45
21	0.908	-0.84	6.16	4.13	66	0.278	-11.12	-4.12	0.39
22	0.899	-0.92	6.08	4.05	67	0.256	-11.84	-4.84	0.33
23	0.890	-1.01	5.99	3.97	68	0.234	-12.62	-5.62	0.27
24	0.882	-1.10	5.90	3.89	69	0.212	-13.47	-6.47	0.23
25	0.873	-1.18	5.82	3.82	70	0.190	-14.42	-7.42	0.18
26	0.862	-1.29	5.71	3.72	71	0.174	-15.19	-8.19	0.15
27	0.851	-1.41	5.59	3.63	72	0.158	-16.03	-9.03	0.13
28	0.840	-1.52	5.48	3.53	73	0.142	-16.95	-9.95	0.10
29	0.829	-1.63	5.37	3.44	74	0.126	-17.99	-10.99	0.08
30	0.817	-1.75	5.25	3.35	75	0.110	-19.17	-12.17	0.06
31	0.806	-1.88	5.12	3.25	76	0.098	-20.18	-13.18	0.05
32	0.793	-2.02	4.98	3.15	77	0.086	-21.31	-14.31	0.04
33	0.781	-2.15	4.85	3.05	78	0.074	-22.62	-15.62	0.03
34	0.767	-2.30	4.70	2.95	79	0.062	-24.15	-17.15	0.02
35	0.756	-2.44	4.56	2.86	80	0.050	-26.02	-19.02	0.01
36	0.742	-2.59	4.41	2.76	81	0.046	-26.74	-19.74	0.01
37	0.729	-2.74	4.26	2.67	82	0.042	-27.54	-20.54	0.01
38	0.716	-2.90	4.10	2.57	83	0.038	-28.40	-21.40	0.01
39	0.704	-3.05	3.95	2.48	84	0.034	-29.37	-22.37	0.01
40	0.690	-3.22	3.78	2.39	85	0.030	-30.46	-23.46	0.00
41	0.675	-3.41	3.59	2.29	86	0.030	-30.46	-23.46	0.00
42	0.661	-3.60	3.40	2.19	87	0.030	-30.46	-23.46	0.00
43	0.646	-3.79	3.21	2.09	88	0.030	-30.46	-23.46	0.00
44	0.632	-3.99	3.01	2.00	89	0.030	-30.46	-23.46	0.00

Exhibit 13.7 Tabulation of Proposed Directional Antenna (Antenna Rotation: 300.0°T)



CL-FM Log-periodic

FM

Maximum gain: 7.0 dBd

Vertical polarization

Horizontal radiation pattern

0 degree electrical downtilt

Angle	Field	Rel.dB	dBd	PwrMult	Angle	Field	Rel.dB	dBd	PwrMult
90	0.030	-30.46	-23.46	0.00	135	0.030	-30.46	-23.46	0.00
91	0.030	-30.46	-23.46	0.00	136	0.030	-30.46	-23.46	0.00
92	0.030	-30.46	-23.46	0.00	137	0.030	-30.46	-23.46	0.00
93	0.030	-30.46	-23.46	0.00	138	0.030	-30.46	-23.46	0.00
94	0.030	-30.46	-23.46	0.00	139	0.030	-30.46	-23.46	0.00
95	0.030	-30.46	-23.46	0.00	140	0.030	-30.46	-23.46	0.00
96	0.030	-30.46	-23.46	0.00	141	0.030	-30.46	-23.46	0.00
97	0.030	-30.46	-23.46	0.00	142	0.030	-30.46	-23.46	0.00
98	0.030	-30.46	-23.46	0.00	143	0.030	-30.46	-23.46	0.00
99	0.030	-30.46	-23.46	0.00	144	0.030	-30.46	-23.46	0.00
100	0.030	-30.46	-23.46	0.00	145	0.030	-30.46	-23.46	0.00
101	0.030	-30.46	-23.46	0.00	146	0.030	-30.46	-23.46	0.00
102	0.030	-30.46	-23.46	0.00	147	0.030	-30.46	-23.46	0.00
103	0.030	-30.46	-23.46	0.00	148	0.030	-30.46	-23.46	0.00
104	0.030	-30.46	-23.46	0.00	149	0.030	-30.46	-23.46	0.00
105	0.030	-30.46	-23.46	0.00	150	0.030	-30.46	-23.46	0.00
106	0.030	-30.46	-23.46	0.00	151	0.030	-30.46	-23.46	0.00
107	0.030	-30.46	-23.46	0.00	152	0.030	-30.46	-23.46	0.00
108	0.030	-30.46	-23.46	0.00	153	0.030	-30.46	-23.46	0.00
109	0.030	-30.46	-23.46	0.00	154	0.030	-30.46	-23.46	0.00
110	0.030	-30.46	-23.46	0.00	155	0.030	-30.46	-23.46	0.00
111	0.030	-30.46	-23.46	0.00	156	0.030	-30.46	-23.46	0.00
112	0.030	-30.46	-23.46	0.00	157	0.030	-30.46	-23.46	0.00
113	0.030	-30.46	-23.46	0.00	158	0.030	-30.46	-23.46	0.00
114	0.030	-30.46	-23.46	0.00	159	0.030	-30.46	-23.46	0.00
115	0.030	-30.46	-23.46	0.00	160	0.030	-30.46	-23.46	0.00
116	0.030	-30.46	-23.46	0.00	161	0.030	-30.46	-23.46	0.00
117	0.030	-30.46	-23.46	0.00	162	0.030	-30.46	-23.46	0.00
118	0.030	-30.46	-23.46	0.00	163	0.030	-30.46	-23.46	0.00
119	0.030	-30.46	-23.46	0.00	164	0.030	-30.46	-23.46	0.00
120	0.030	-30.46	-23.46	0.00	165	0.030	-30.46	-23.46	0.00
121	0.030	-30.46	-23.46	0.00	166	0.030	-30.46	-23.46	0.00
122	0.030	-30.46	-23.46	0.00	167	0.030	-30.46	-23.46	0.00
123	0.030	-30.46	-23.46	0.00	168	0.030	-30.46	-23.46	0.00
124	0.030	-30.46	-23.46	0.00	169	0.030	-30.46	-23.46	0.00
125	0.030	-30.46	-23.46	0.00	170	0.030	-30.46	-23.46	0.00
126	0.030	-30.46	-23.46	0.00	171	0.030	-30.46	-23.46	0.00
127	0.030	-30.46	-23.46	0.00	172	0.030	-30.46	-23.46	0.00
128	0.030	-30.46	-23.46	0.00	173	0.030	-30.46	-23.46	0.00
129	0.030	-30.46	-23.46	0.00	174	0.030	-30.46	-23.46	0.00
130	0.030	-30.46	-23.46	0.00	175	0.030	-30.46	-23.46	0.00
131	0.030	-30.46	-23.46	0.00	176	0.030	-30.46	-23.46	0.00
132	0.030	-30.46	-23.46	0.00	177	0.030	-30.46	-23.46	0.00
133	0.030	-30.46	-23.46	0.00	178	0.030	-30.46	-23.46	0.00
134	0.030	-30.46	-23.46	0.00	179	0.030	-30.46	-23.46	0.00

Exhibit 13.7 Tabulation of Proposed Directional Antenna (Antenna Rotation: 300.0°T)



CL-FM Log-periodic

FM

Maximum gain: 7.0 dBd

Vertical polarization

Horizontal radiation pattern

0 degree electrical downtilt

Angle	Field	Rel.dB	dBd	PwrMult	Angle	Field	Rel.dB	dBd	PwrMult
180	0.030	-30.46	-23.46	0.00	225	0.030	-30.46	-23.46	0.00
181	0.030	-30.46	-23.46	0.00	226	0.030	-30.46	-23.46	0.00
182	0.030	-30.46	-23.46	0.00	227	0.030	-30.46	-23.46	0.00
183	0.030	-30.46	-23.46	0.00	228	0.030	-30.46	-23.46	0.00
184	0.030	-30.46	-23.46	0.00	229	0.030	-30.46	-23.46	0.00
185	0.030	-30.46	-23.46	0.00	230	0.030	-30.46	-23.46	0.00
186	0.030	-30.46	-23.46	0.00	231	0.030	-30.46	-23.46	0.00
187	0.030	-30.46	-23.46	0.00	232	0.030	-30.46	-23.46	0.00
188	0.030	-30.46	-23.46	0.00	233	0.030	-30.46	-23.46	0.00
189	0.030	-30.46	-23.46	0.00	234	0.030	-30.46	-23.46	0.00
190	0.030	-30.46	-23.46	0.00	235	0.030	-30.46	-23.46	0.00
191	0.030	-30.46	-23.46	0.00	236	0.030	-30.46	-23.46	0.00
192	0.030	-30.46	-23.46	0.00	237	0.030	-30.46	-23.46	0.00
193	0.030	-30.46	-23.46	0.00	238	0.030	-30.46	-23.46	0.00
194	0.030	-30.46	-23.46	0.00	239	0.030	-30.46	-23.46	0.00
195	0.030	-30.46	-23.46	0.00	240	0.030	-30.46	-23.46	0.00
196	0.030	-30.46	-23.46	0.00	241	0.030	-30.46	-23.46	0.00
197	0.030	-30.46	-23.46	0.00	242	0.030	-30.46	-23.46	0.00
198	0.030	-30.46	-23.46	0.00	243	0.030	-30.46	-23.46	0.00
199	0.030	-30.46	-23.46	0.00	244	0.030	-30.46	-23.46	0.00
200	0.030	-30.46	-23.46	0.00	245	0.030	-30.46	-23.46	0.00
201	0.030	-30.46	-23.46	0.00	246	0.030	-30.46	-23.46	0.00
202	0.030	-30.46	-23.46	0.00	247	0.030	-30.46	-23.46	0.00
203	0.030	-30.46	-23.46	0.00	248	0.030	-30.46	-23.46	0.00
204	0.030	-30.46	-23.46	0.00	249	0.030	-30.46	-23.46	0.00
205	0.030	-30.46	-23.46	0.00	250	0.030	-30.46	-23.46	0.00
206	0.030	-30.46	-23.46	0.00	251	0.030	-30.46	-23.46	0.00
207	0.030	-30.46	-23.46	0.00	252	0.030	-30.46	-23.46	0.00
208	0.030	-30.46	-23.46	0.00	253	0.030	-30.46	-23.46	0.00
209	0.030	-30.46	-23.46	0.00	254	0.030	-30.46	-23.46	0.00
210	0.030	-30.46	-23.46	0.00	255	0.030	-30.46	-23.46	0.00
211	0.030	-30.46	-23.46	0.00	256	0.030	-30.46	-23.46	0.00
212	0.030	-30.46	-23.46	0.00	257	0.030	-30.46	-23.46	0.00
213	0.030	-30.46	-23.46	0.00	258	0.030	-30.46	-23.46	0.00
214	0.030	-30.46	-23.46	0.00	259	0.030	-30.46	-23.46	0.00
215	0.030	-30.46	-23.46	0.00	260	0.030	-30.46	-23.46	0.00
216	0.030	-30.46	-23.46	0.00	261	0.030	-30.46	-23.46	0.00
217	0.030	-30.46	-23.46	0.00	262	0.030	-30.46	-23.46	0.00
218	0.030	-30.46	-23.46	0.00	263	0.030	-30.46	-23.46	0.00
219	0.030	-30.46	-23.46	0.00	264	0.030	-30.46	-23.46	0.00
220	0.030	-30.46	-23.46	0.00	265	0.030	-30.46	-23.46	0.00
221	0.030	-30.46	-23.46	0.00	266	0.030	-30.46	-23.46	0.00
222	0.030	-30.46	-23.46	0.00	267	0.030	-30.46	-23.46	0.00
223	0.030	-30.46	-23.46	0.00	268	0.030	-30.46	-23.46	0.00
224	0.030	-30.46	-23.46	0.00	269	0.030	-30.46	-23.46	0.00

Exhibit 13.7 Tabulation of Proposed Directional Antenna (Antenna Rotation: 300.0°T)



CL-FM Log-periodic

FM

Maximum gain: 7.0 dBd

Vertical polarization

Horizontal radiation pattern

0 degree electrical downtilt

Angle	Field	Rel.dB	dBd	PwrMult	Angle	Field	Rel.dB	dBd	PwrMult
270	0.030	-30.46	-23.46	0.00	315	0.618	-4.19	2.81	1.91
271	0.030	-30.46	-23.46	0.00	316	0.632	-3.99	3.01	2.00
272	0.030	-30.46	-23.46	0.00	317	0.646	-3.79	3.21	2.09
273	0.030	-30.46	-23.46	0.00	318	0.661	-3.60	3.40	2.19
274	0.030	-30.46	-23.46	0.00	319	0.675	-3.41	3.59	2.29
275	0.030	-30.46	-23.46	0.00	320	0.690	-3.22	3.78	2.39
276	0.034	-29.37	-22.37	0.01	321	0.704	-3.05	3.95	2.48
277	0.038	-28.40	-21.40	0.01	322	0.716	-2.90	4.10	2.57
278	0.042	-27.54	-20.54	0.01	323	0.729	-2.74	4.26	2.67
279	0.046	-26.74	-19.74	0.01	324	0.742	-2.59	4.41	2.76
280	0.050	-26.02	-19.02	0.01	325	0.756	-2.44	4.56	2.86
281	0.062	-24.15	-17.15	0.02	326	0.767	-2.30	4.70	2.95
282	0.074	-22.62	-15.62	0.03	327	0.781	-2.15	4.85	3.05
283	0.086	-21.31	-14.31	0.04	328	0.793	-2.02	4.98	3.15
284	0.098	-20.18	-13.18	0.05	329	0.806	-1.88	5.12	3.25
285	0.110	-19.17	-12.17	0.06	330	0.817	-1.75	5.25	3.35
286	0.126	-17.99	-10.99	0.08	331	0.829	-1.63	5.37	3.44
287	0.142	-16.95	-9.95	0.10	332	0.840	-1.52	5.48	3.53
288	0.158	-16.03	-9.03	0.13	333	0.851	-1.41	5.59	3.63
289	0.174	-15.19	-8.19	0.15	334	0.862	-1.29	5.71	3.72
290	0.190	-14.42	-7.42	0.18	335	0.873	-1.18	5.82	3.82
291	0.212	-13.47	-6.47	0.23	336	0.882	-1.10	5.90	3.89
292	0.234	-12.62	-5.62	0.27	337	0.890	-1.01	5.99	3.97
293	0.256	-11.84	-4.84	0.33	338	0.899	-0.92	6.08	4.05
294	0.278	-11.12	-4.12	0.39	339	0.908	-0.84	6.16	4.13
295	0.300	-10.46	-3.46	0.45	340	0.916	-0.76	6.24	4.21
296	0.318	-9.95	-2.95	0.51	341	0.923	-0.69	6.31	4.27
297	0.336	-9.47	-2.47	0.57	342	0.931	-0.62	6.38	4.34
298	0.354	-9.02	-2.02	0.63	343	0.938	-0.56	6.44	4.41
299	0.372	-8.59	-1.59	0.69	344	0.946	-0.49	6.51	4.48
300	0.390	-8.18	-1.18	0.76	345	0.952	-0.42	6.58	4.55
301	0.405	-7.84	-0.84	0.82	346	0.958	-0.37	6.63	4.60
302	0.421	-7.51	-0.51	0.89	347	0.964	-0.32	6.68	4.65
303	0.436	-7.20	-0.20	0.95	348	0.969	-0.27	6.73	4.71
304	0.452	-6.90	0.10	1.02	349	0.975	-0.22	6.78	4.76
305	0.467	-6.60	0.40	1.10	350	0.980	-0.18	6.82	4.81
306	0.483	-6.33	0.67	1.17	351	0.982	-0.15	6.85	4.84
307	0.498	-6.06	0.94	1.24	352	0.985	-0.13	6.87	4.87
308	0.513	-5.80	1.20	1.32	353	0.988	-0.10	6.90	4.89
309	0.528	-5.54	1.46	1.40	354	0.991	-0.08	6.92	4.92
310	0.544	-5.30	1.70	1.48	355	0.993	-0.06	6.94	4.95
311	0.558	-5.06	1.94	1.56	356	0.995	-0.04	6.96	4.96
312	0.573	-4.84	2.16	1.65	357	0.996	-0.03	6.97	4.97
313	0.588	-4.61	2.39	1.73	358	0.997	-0.02	6.98	4.99
314	0.602	-4.40	2.60	1.82	359	0.998	-0.01	6.99	5.00