

June 2012
FM Translator K257BP
Grants Pass, Oregon Channel 254D
Allocation Study

The attached spacing study shows the spacing between the proposed translator site and the location of cochannel and adjacent channel stations and proposals. This study was made with the Commission's Class A spacing requirements, and individual situations were examined to determine the lack of prohibited contour overlap per the requirements of §74.1204 of the Rules. The attached allocation study map demonstrates compliance with the Commission's Rules for protection of FM broadcast stations and FM translators as outlined in §74.1204.

The proposed translator transmitter site is located within the 60 dBu protected contour of second-adjacent channel station KLDK on Channel 252C2 at Harbeck-Fruitdale. The proposed site is 3.35 km from the KLDK transmitter site at a bearing of 350 degrees True. Given the KLDK antenna's 576 meter HAAT and 1.85 kW ERP along this radial, KLDK places a 98.4 dBu contour at the translator transmitter site. The corresponding interfering contour from the translator is $98.4 + 40 = 138.4$ dBu. Under a Free Space calculation, this contour extends just 8.4 meters from the antenna, which is located on an unpopulated hilltop. There is no population within this interference area. Therefore, the proposed facility is believed to satisfy the requirements of §74.1204(d) with respect to KLDK.

The proposed translator transmitter site is located within the 60 dBu protected contour of the construction permit facility for third-adjacent channel station KCMD on Channel 257A at Grants Pass. The proposed site is 8.81 km from the KCMD transmitter site at a bearing of 168 degrees True. Given the KCMD antenna's 340 meter HAAT and 0.250 kW ERP along this radial, KCMD places a 77.1 dBu contour at the translator transmitter site. The corresponding interfering contour from the translator is $77.1 + 40 = 117.1$ dBu. Under a Free Space calculation, this contour extends just 97.4 meters from the antenna, which is located on an unpopulated hilltop. This contour is depicted on the attached transmitter site map. There is no population within this interference area. Therefore, the proposed facility is believed to satisfy the requirements of §74.1204(d) with respect to KCMD.

The proposed facility will operate with an ERP of less than 100 watts, and therefore there are no spacing restrictions to stations which are 53 or 54 channels removed from the proposed operation.

=====

SEARCH PARAMETERS FM Database Date: 120608

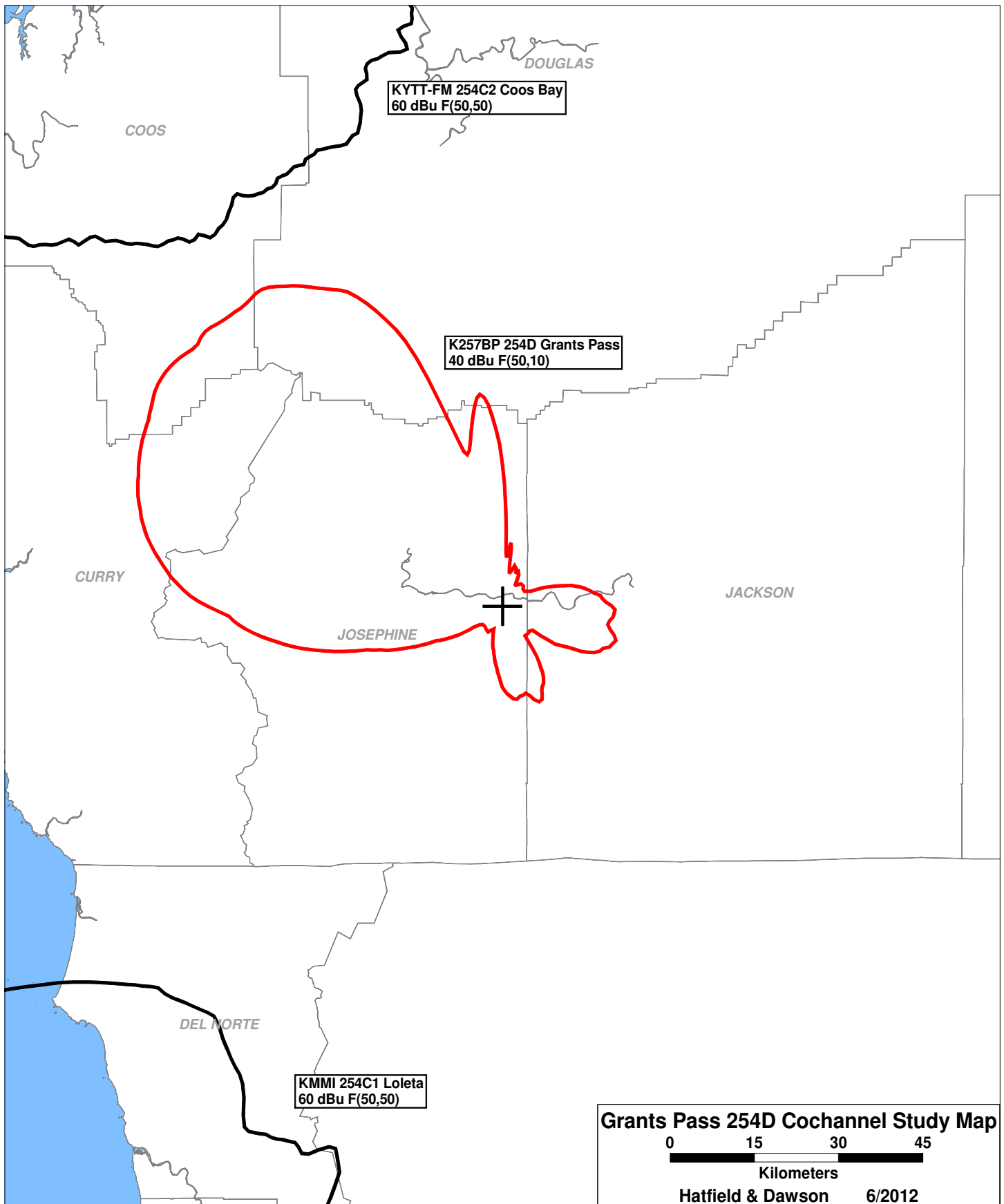
Channel: 254A 98.7 MHz
 Latitude: 42 24 43
 Longitude: 123 16 55
 Safety Zone: 50 km
 Job Title: GP 254

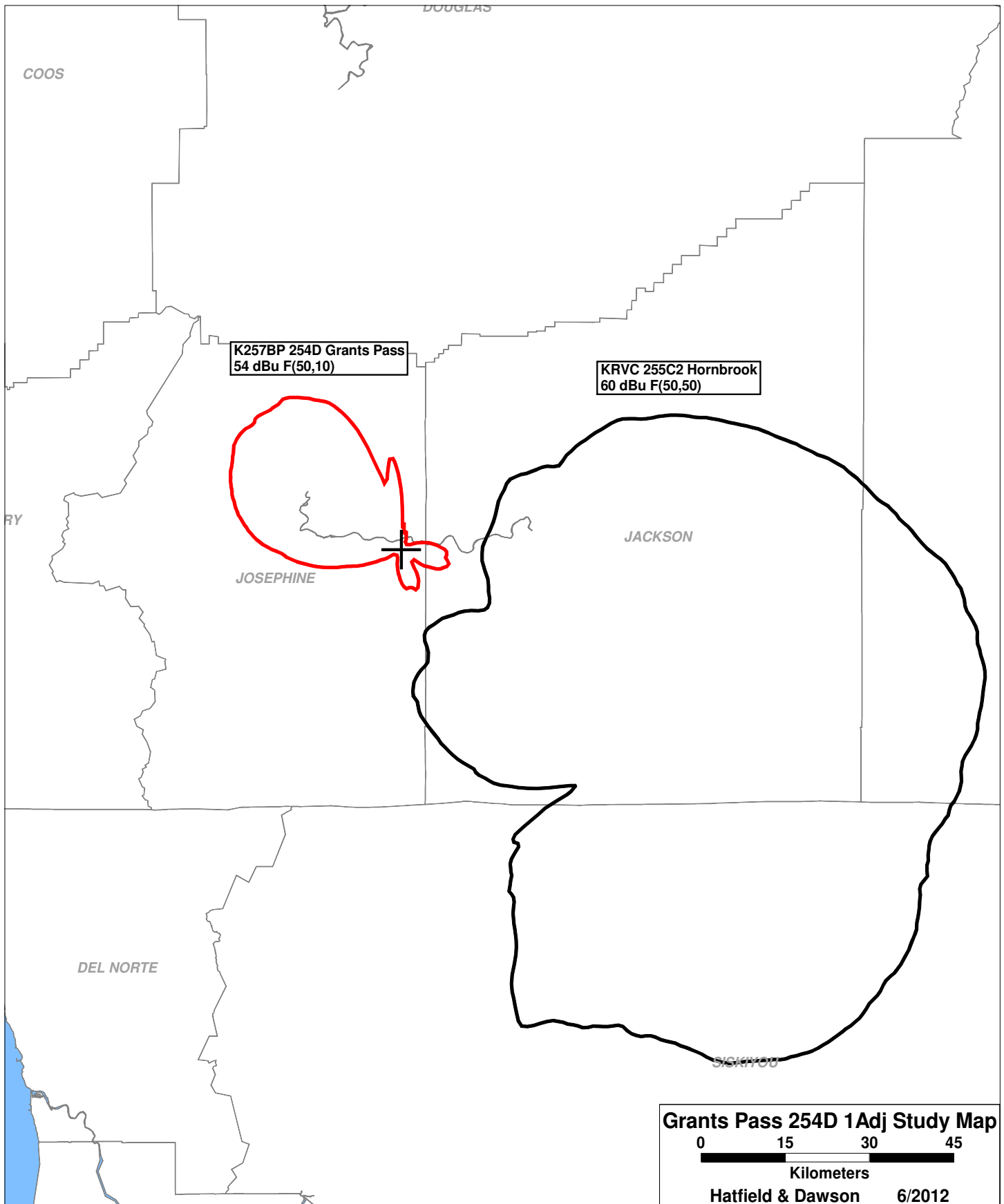
Call Status	City St	FCC File No.	Channel Freq.	ERP(kW) HAAT(m)	Latitude Longitude	Bearing deg-True	Dist (km)	Req (km)
K201BG LIC	DEAD INDIAN ETC. OR BLFT-880526TA	201D 88.1	0.087 121.0	DA	42-11-10 122-41-40	117.3	54.56 0.00	0 TRANS
K201DI LIC	GRANTS PASS OR BLFT-970402TA	201D 88.1	0.023 345.0	DA	42-27-06 123-17-47	345.0	4.57 0.00	0 TRANS
K251AX LIC	MEDFORD OR BLFT-00121ACJ	251D 98.1	0.041 702.0	DA	42-21-12 122-47-08	98.9	41.40 0.00	0 TRANS
KLDR LIC	HARBECK-FRUITDALE OR BLH-930505KA	252C2 98.3	1.850 638.0		42-22-56 123-16-29	169.8	3.35 -51.65	55 SHORT
950206MHK VAC	KENO OR -	253A 98.5	0.000 0.0		42-07-30 121-55-42	105.5	116.14 44.14	72 CLEAR
NEW RSV	KENO OR -	253C2 98.5	0.000 0.0		42-04-39 121-44-53	105.9	131.94 25.94	106 CLEAR
NEW APP	KENO OR BNPH-20518ADG	253C2 98.5	1.800 653.0		42-05-50 121-37-59	103.9 SS	140.49 34.49	106 CLEAR
KMMI CP	LOLETA CA BNPH-70406ABY	254C1 98.7	100.000 299.0		41-05-59 124-07-31	205.9	161.74 -38.26	200 SHORT
KYTT-FM LIC	COOS BAY OR BMLH-00108ADB	254C2 98.7	13.000 293.0		43-27-49 124-05-44	330.8	134.39 -31.61	166 SHORT
K255AK LIC	HAPPY CAMP CA BLFT-970707TM	255D 98.9	0.047 953.0	DA	41-51-29 123-21-09	185.4	61.80 0.00	0 TRANS
KRVC LIC	HORNBROOK CA BLH-70103AEX	255C2 98.9	1.250 757.0		42-05-00 122-42-00	127.1 SS	60.32 -45.68	106 SHORT
K255AJ LIC	MYRTLE CREEK OR BLFT-970606TM	255D 98.9	0.010 749.0		42-54-06 123-17-07	359.7	54.40 0.00	0 TRANS
KSHD-LP LIC	SHADY COVE OR BLL-70719ADL	256L1 99.1	0.100 -156.0		42-37-25 122-48-29	58.6	45.49 16.49	29 CLEAR

```
=====
SEARCH PARAMETERS                               FM Database Date: 120608
Channel: 254A      98.7 MHz                      Page 2
Latitude:  42 24 43
Longitude: 123 16 55
Safety Zone:  50 km
Job Title: GP 254
```

Call Status	City St	FCC File No.	Channel Freq.	ERP(kW) HAAT(m)	Latitude Longitude	Bearing deg-True	Dist (km)	Req (km)
K257BT LIC	CAVE JUNCTION OR	BLFT-01021ACW	257D 99.3	0.050 DA 784.0	42-15-28 123-39-34	241.2	35.51 0.00	0 TRANS
KCMD CP	GRANTS PASS OR	BNPH-00329AAD	257A 99.3	0.250 468.0	42-29-22 123-18-16	347.9 SS	8.81 -22.19	31 SHORT
K257BP LIC	GRANTS PASS OR	BLFT-71129ADP	257D 99.3	0.099 DA 538.0	42-24-43 123-16-55	0.0	0.00 0.00	0 TRANS
K257BO LIC	JACKSONVILLE OR	BLFT-81104AEY	257D 99.3	0.050 DA 720.0	42-17-55 122-44-53	105.8	45.75 0.00	0 TRANS
K257EB LIC	RIDDLE/DAYS CREEK OR	BLFT-50210AUA	257D 99.3	0.010 743.0	42-54-06 123-17-07	359.7	54.40 0.00	0 TRANS

===== END OF FM SPACING STUDY FOR CHANNEL 254 =====

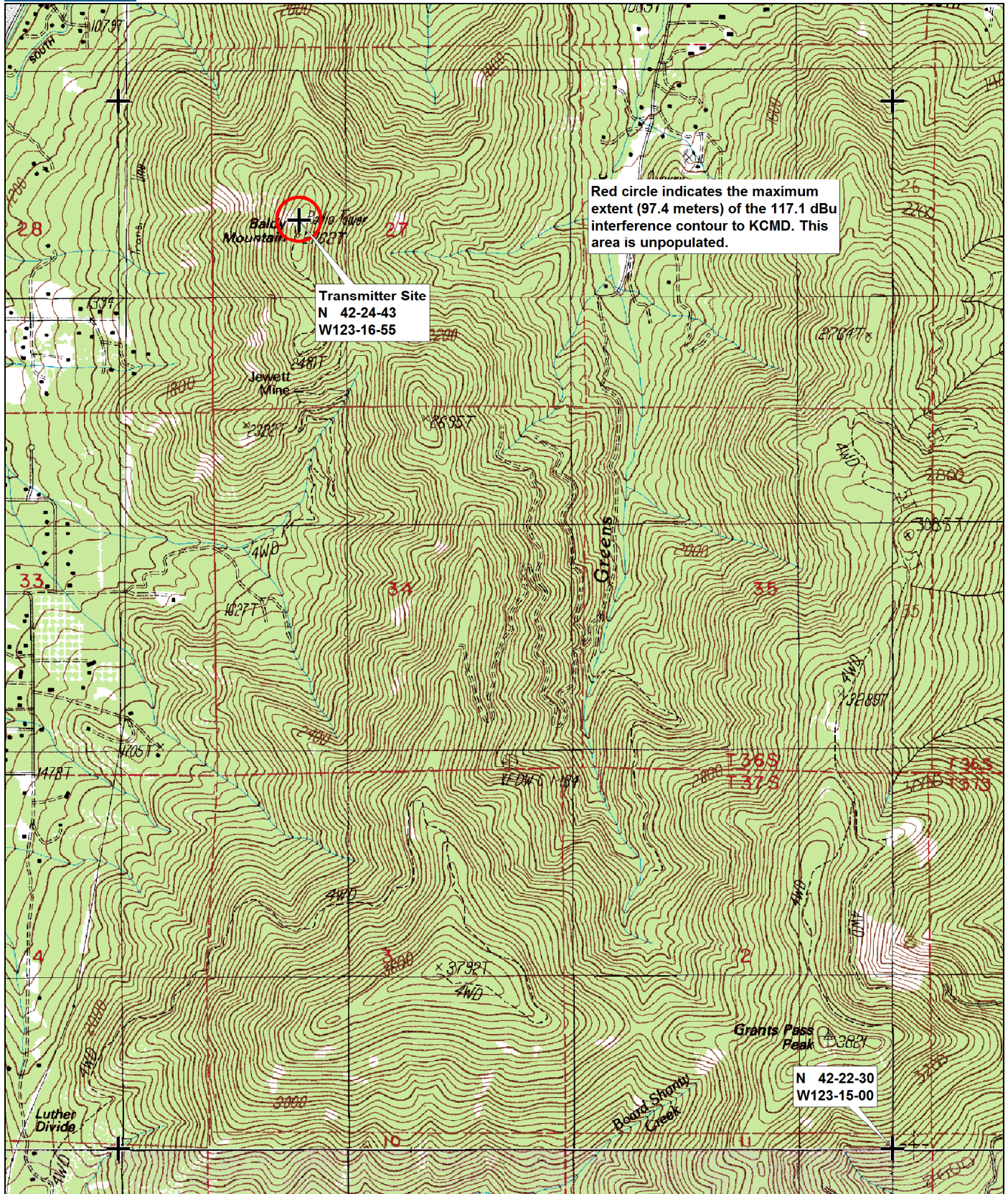




K257BP 254D Grants Pass
54 dBu F(50,10)

KRVC 255C2 Hornbrook
60 dBu F(50,50)

Grants Pass 254D 1Adj Study Map
0 15 30 45
Kilometers
Hatfield & Dawson 6/2012



Red circle indicates the maximum extent (97.4 meters) of the 117.1 dBu interference contour to KCMD. This area is unpopulated.

Transmitter Site
N 42-24-43
W123-16-55

N 42-22-30
W123-15-00

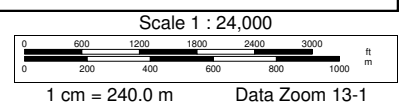
Transmitter Site Map
FM Translator K257BP on Ch254D
Grants Pass, OR 6/2012

Grants Pass, OR Quadrangle
7.5 Minute Series
Contour Interval 40 Feet

Data use subject to license.

© DeLorme. XMap® 7.

www.delorme.com



June 2012
FM Translator K257BP
Grants Pass, Oregon Channel 254D
RF Exposure Study

Facilities Proposed

The proposed operation will be on Channel 257D (99.3 MHz) with an effective radiated power of 99 watts. Operation is proposed with the existing antenna mounted on a structure atop Baldy Mountain.

The proposed antenna support structure does not exceed 60.96 meters (200 feet) above ground and does not require notification to the Federal Aviation Administration. Therefore, this structure does not require an Antenna Structure Registration Number.

RF Exposure Considerations

Section 1.1307(b)(1) of the Commission's Rules exempts FM translators and boosters operating with an effective radiated power of 100 watts or less from the requirement to submit an Environmental Assessment to determine compliance with FCC specified guidelines for human exposure to radiofrequency radiation. The applicant proposes operation with a maximum lobe effective radiated power of 99 watts and therefore no calculations have been submitted. Nonetheless, public access to the site is restricted and all station personnel and contractors are required to follow appropriate safety procedures, including turning off the transmitter if necessary, prior to commencing work on the antenna tower.