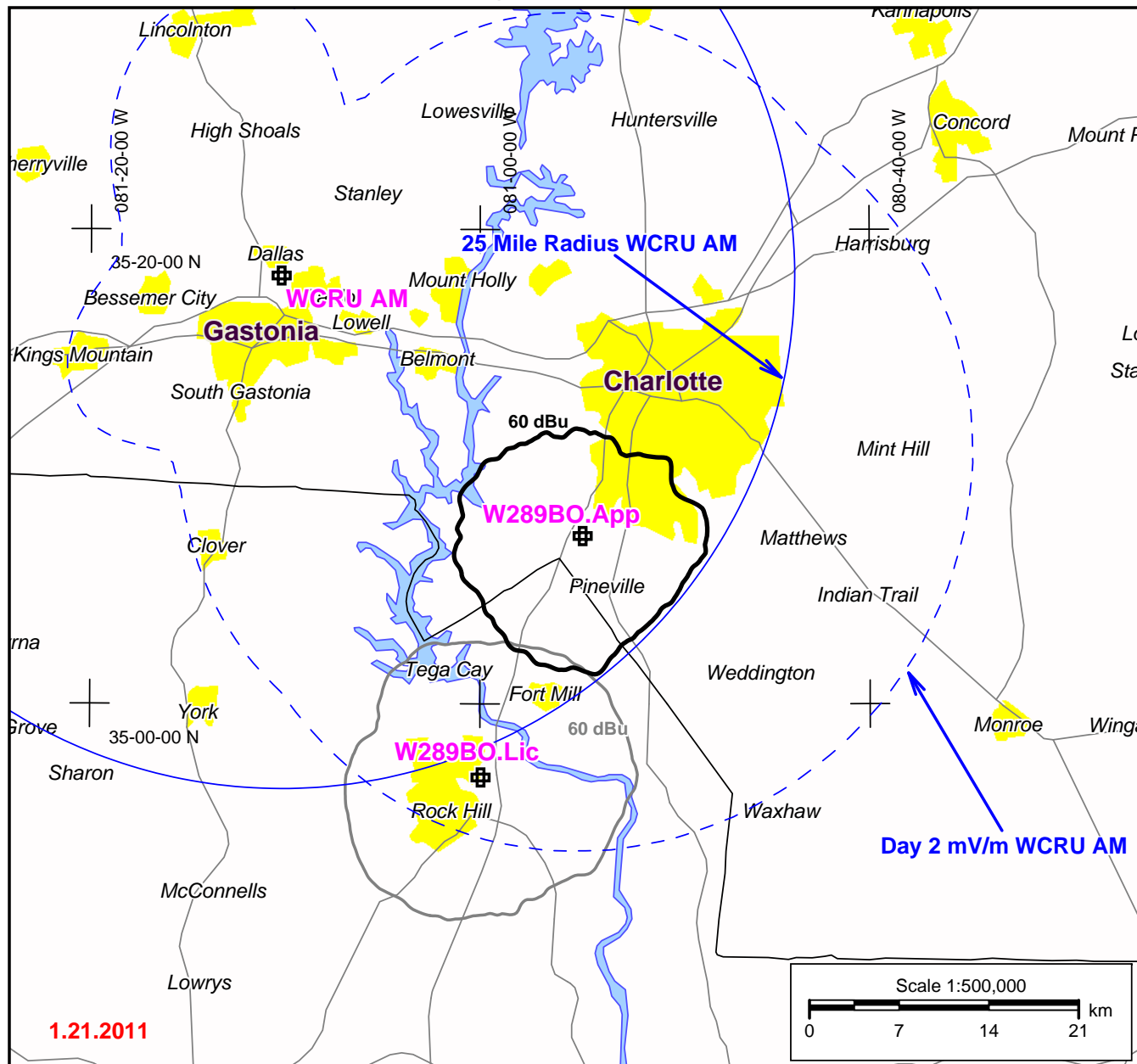


Exhibit 10 - W289BO Coverage Plot - Fill-In Translator for WCRU AM



W289BO Pineville NC - Proposed FCC FAC ID 154301

This plot shows that the proposed fill-in translator 60 dBu contour fits wholly within the 25-mile radius and the daytime 2 mV/m contour of the WCRU AM Tower site.

The plot also shows the proposed 60 dBu contour overlaps the licensed 60 dBu contour of the translator.

The 60 dBu contour of the proposed fill-in translator encompasses the proposed community of license, Pineville, NC.

W289BO.App

Latitude: 35-07-04.80 N
Longitude: 080-54-44.40 W
ERP: 0.25 kW
Channel: 289
Frequency: 105.7 MHz
AMSL Height: 241.7 m
Elevation: 176.2 m
Horiz. Pattern: Directional