

WCIQ-DT CHANNEL 7 MINOR
MODIFICATION OF CONSTRUCTION
PERMIT APPLICATION FOR MAXIMIZED
POST-TRANSITION DTV OPERATION
MT. CHEAHA, ALABAMA
(Alabama Educational Television Commission)

KESSLER AND GEHMAN ASSOCIATES, INC.
TELECOMMUNICATIONS CONSULTING ENGINEERS

20080616

Prepared by William T. Godfrey, Jr.

KG&A

507 N.W. 60th Street, Suite C
Gainesville, Florida 32607



Kessler and Gehman Associates, Inc.

Telecommunications Consulting Engineers

ENGINEERING TECHNICAL STATEMENT PREPARED BY WILLIAM T. GODFREY, JR. OF THE FIRM KESSLER AND GEHMAN ASSOCIATES, INC., TELECOMMUNICATIONS CONSULTING ENGINEERS IN CONNECTION WITH A MINOR MODIFICATION OF CONSTRUCTION PERMIT APPLICATION (BPEDT-20080312ACE) REQUESTING A CONSTRUCTION PERMIT FOR AUTHORIZATION TO OPERATE THE ALABAMA EDUCATIONAL TELEVISION COMMISSION (AETC) DIGITAL TELEVISION BROADCAST FACILITY, WCIQ-DT CHANNEL 7, WITH MAXIMIZED PARAMETERS ON ITS POST-TRANSITION DIGITAL CHANNEL AS ADOPTED IN APPENDIX B.

The firm Kessler and Gehman Associates, Inc. has been retained by Alabama Educational Television Commission (AETC), Birmingham, AL to prepare engineering studies and the engineering portion of a minor modification of construction permit application (BPEDT-20080312ACE) requesting authorization to maximize the WCIQ-DT Channel 7 post-transition DTV facility pursuant to the procedures outlined in the Third Periodic Review Report and Order (MB Docket No. 07-91) and the Public Notice released on May 30, 2008 lifting the freeze on maximization application filings (DA-08-1213). The following table depicts the allotted (Appendix B), authorized (CP) and proposed (maximization) parameters respectively for the WCIQ-DT post-transition DTV facility.

<i>Facility ID</i>	<i>State</i>	<i>City</i>	<i>Call Sign</i>	<i>DTV Chan</i>	<i>DTV ERP (kW)</i>	<i>DTV HAAT (m)</i>	<i>DTV Antenna</i>	<i>DTV Latitude (DDMMSS)</i>	<i>DTV Longitude (DDMMSS)</i>
--------------------	--------------	-------------	------------------	-----------------	---------------------	---------------------	--------------------	------------------------------	-------------------------------

Final DTV Table of Allotments (Appendix B) Parameters:

711	AL	MT. CHEAHA	WCIQ	7	24.1	610.0	Directional	332907	854833
-----	----	------------	------	---	------	-------	-------------	--------	--------

Authorized Parameters (BPEDT-20080312ACE):

711	AL	MT. CHEAHA	WCIQ	7	24.0	575.8	OMNI	332906	854832
-----	----	------------	------	---	------	-------	------	--------	--------

Proposed Maximized Parameters:

711	AL	MT. CHEAHA	WCIQ	7	34.8	575.8	OMNI	332906	854832
-----	----	------------	------	---	------	-------	------	--------	--------



Accordingly, AETC proposes to maximize operation of the WCIQ-DT Channel 7 post-transition DTV facility by making the following modifications to its existing construction permit:

- 1) Increase maximum Effective Radiated Power (ERP) from 24.0 kW to 34.8 kW.

All other operating parameters shall remain as authorized in the underlying post-transition DTV construction permit (BPEDT-20080312ACE).

Post-Transition Interference Protection

The proposed facility satisfies the post-transition interference protection provisions of §73.616 of the FCC Rules. Exhibits 10 (Part1) and 11 (Part2) are Longley-Rice interference studies that were computed using a Sun Microsystems SPARC 5 computer work station loaded with the FCC's DTV analysis software. The interference percentages are exactly the same as the FCC calculations since the studies were performed using the same type computers and the same interference analysis software. Exhibit 10 was run to determine the interference predicted to each desired station from the proposed WCIQ-DT Channel 7 post-transition DTV maximized facility. The FCC program recognized a mutually exclusive situation between the proposed WCIQ-DT maximized facility and the allotted WCIQ-DT Appendix B facility because they both had the same community of license (Mt. Cheaha) and they both were assigned Channel 7. As a result, the program threw out the allotted Channel 7 facility in the "Before" studies and used the proposed Channel 7 maximized facility in the "After" studies. Therefore, only the populations in the "After" studies are used in Exhibit 10 to identify the population predicted to receive interference from the proposed maximized facility. Exhibit 11 is the exact same study as Exhibit 10 except the community of license was purposely changed from "Mt. Cheaha" to "Mt. Cheaha_2" for the proposed maximized facility so that the program would not throw out the allotted Channel 7 facility. Referring to Exhibit 11, it can be seen that the "Before" studies now contain the allotted Channel 7 facility so that the population predicted to be received by the desired stations from the allotted Channel 7 facility can be calculated for masking purposes. The interference studies demonstrate that the proposed facility is predicted to cause no more than 0.2% interference to all post-transition



DTV stations considered in the culling list which is well below the 0.5% new interference standard pursuant to §V.F. (§155) of the Third Periodic Review Report and Order. Accordingly, the 0.5% new interference standard pursuant to §V.F. (§155) of the Third Periodic Review Report and Order has been satisfied.

The DTV Maximum Power and Antenna Heights Table in §73.622(f)(7) of the FCC rules states that the maximum ERP for a DTV station that operates on a channel between 7-13 with an antenna HAAT of 575.8 m is 34.8 kW (interpolated). Therefore, this application requests the full maximized ERP of 34.8 kW based on the WCIQ-DT Channel 7 antenna HAAT.

Exhibits

Exhibits 1 and 2 represent WCIQ's administration data, antenna and antenna structure specifications.

Exhibit 3 depicts the profile view of the proposed antenna on the antenna structure with all the appropriate elevations.

Exhibits 4 (11 deg) and 5 (90 deg) display the elevation pattern and Exhibit 6 displays the elevation pattern tabulation.

Exhibit 7 depicts the location of the WCIQ-DT transmitter site on a USGS 7.5-Minute (Series) Topographic map.

Exhibit 8 is a principal community contour map demonstrating that the proposed (maximized) WCIQ-DT Channel 7 post-transition DTV facility's F(50,90) 43.0 dBuV/m Principal Community contour would completely encompass the principal community of Mt. Cheaha, AL.



Exhibit 9 is a contour map comparing the authorized WCIQ-DT Channel 7 F(50,90) 36.0 dBuV/m contour (green) and the proposed (maximized) WCIQ-DT Channel 7 F(50,90) 36.0 dBuV/m contour (red).

Exhibits 10 and 11 are Longley-Rice interference studies that were computed using a Sun Microsystems SPARC 5 computer work station loaded with the FCC's DTV analysis software. The exhibits demonstrate compliance with the 0.5% new interference standard.

Environmental Impact

The proposed construction would have no significant environmental impact as defined in §1.1307 of the FCC Rules. The digital transmitter, 3-1/8 inch transmission line and antenna system shall produce an ERP of 34.8 kW (horizontal polarization). It was determined that the maximum lobe of radiation from the base of the tower would occur at approximately 2,706.0 feet from the base of the tower (2,756.7-foot radial distance from the antenna center). At approximately 2,706.0 feet from the base of the tower, the depression angle of the main lobe will be approximately 11° below the horizontal. At that point, the relative field is 0.283 and the power density six feet above the ground will be approximately 0.0001 mW/cm². This equates to only 0.01% of the Maximum Permissible Exposure (MPE) limits for Occupational/Controlled Exposure and only 0.07% of the MPE limits for General Population/Uncontrolled Exposure authorized by the American National Standards Institute (ANSI). Since operation of the proposed (maximized) WCIQ-DT Channel 7 post-transition DTV facility will not exceed 5.0% of the MPE limit for Occupational/Controlled Exposure or General Population/Uncontrolled Exposure at any point on the ground, the proposed (maximized) WCIQ-DT facility is not considered a "significant contributor" to the RF exposure environment pursuant to OET Bulletin 65, Edition 97-01. Therefore, contributions of exposure from other sources were not accounted for in this analysis. It is safe to conclude that the emissions would be insignificant and well within the maximum allowable requirements.



Kessler and Gehman Associates, Inc.

Telecommunications Consulting Engineers


If other antennas are placed on the tower in the future, the licensee will cooperate with those users by reducing or completely terminating the power to the antenna when maintenance workers are in danger from the electromagnetic radiation emanating from the antenna. It is also understood that additional antennas on the support structure could increase the overall RF exposure levels and it is the responsibility of each licensee to ensure that the total RF exposure resulting from the operation of all antennas on the support structure do not exceed the maximum permissible exposure level at any point on the ground.

Certification

This technical statement was prepared by William T. Godfrey, Telecommunications Consultant with Kessler and Gehman Associates, Inc. having offices in Gainesville, Florida and has been working in the field of radio and television broadcast consulting since 1998. He graduated from the University of North Florida with a Bachelor of Arts degree in Criminal Justice and a minor in Mathematics in 1993. As a Professional in the field of Telecommunications he states under penalty of perjury that the information contained in this report is true and correct to the best of his knowledge and belief.



KESSLER AND GEHMAN ASSOCIATES, INC.


WILLIAM T. GODFREY, JR.
Telecommunications Technical Consultant

16 June, 2008

WCIQ-DT CHANNEL 7 MAXIMIZED DTV FACILITY

MOUNT CHEAHA, ALABAMA

ENGINEERING SPECIFICATIONS

A. Transmitter Site:

Geographic coordinates (NAD 27):

North Latitude 33° 29' 06"

West Longitude 85° 48' 32"

Transmitter Site Location: **Located on Cheaha Mountain approximately
14.7 km ESE (111°) of Munford, AL**

B. Main Studio Site:

Street Address **2112 11TH Avenue South, Birmingham, AL 35205**

C. Post-Transition Facility:

DTV Channel Number 7
Frequency 174 - 180 MHz
Offset N/A

D. Antenna Height:

Height of Site Above Mean Sea Level (AMSL) 715.9 M
Overall Height of Structure Above Ground 170.7 M
(including all appurtenances)
Overall Height of Structure Above Mean Sea Level 886.6 M
(including all appurtenances)
Height of Site Above Average Terrain 413.6 M
Antenna Height Radiation Center (R/C) Above Ground 162.2 M
Antenna Height R/C Above Average Terrain 575.8 M
Antenna Height R/C Above Mean Sea Level 878.1 M
Average of All Non-Odd Radials 302.3 M

E. System Parameters – Horizontal Polarization:

Transmitter Power Required 5.9 kW
Maximum Power Input to Antenna 5.0 kW
Transmission Line Loss 0.72 dB
Transmission Line Efficiency 84.7%
Maximum Antenna Gain in Beam Maximum 8.45 dB
Maximum Antenna Gain in Horizontal Plane 8.33 dB
Maximum Effective Radiated Power 15.42 dBk
In Beam Maximum 34.8 kW
Maximum Effective Radiated Power 15.30 dBk
In Horizontal Plane 33.9 kW

WCIQ-DT CHANNEL 7 MAXIMIZED DTV FACILITY

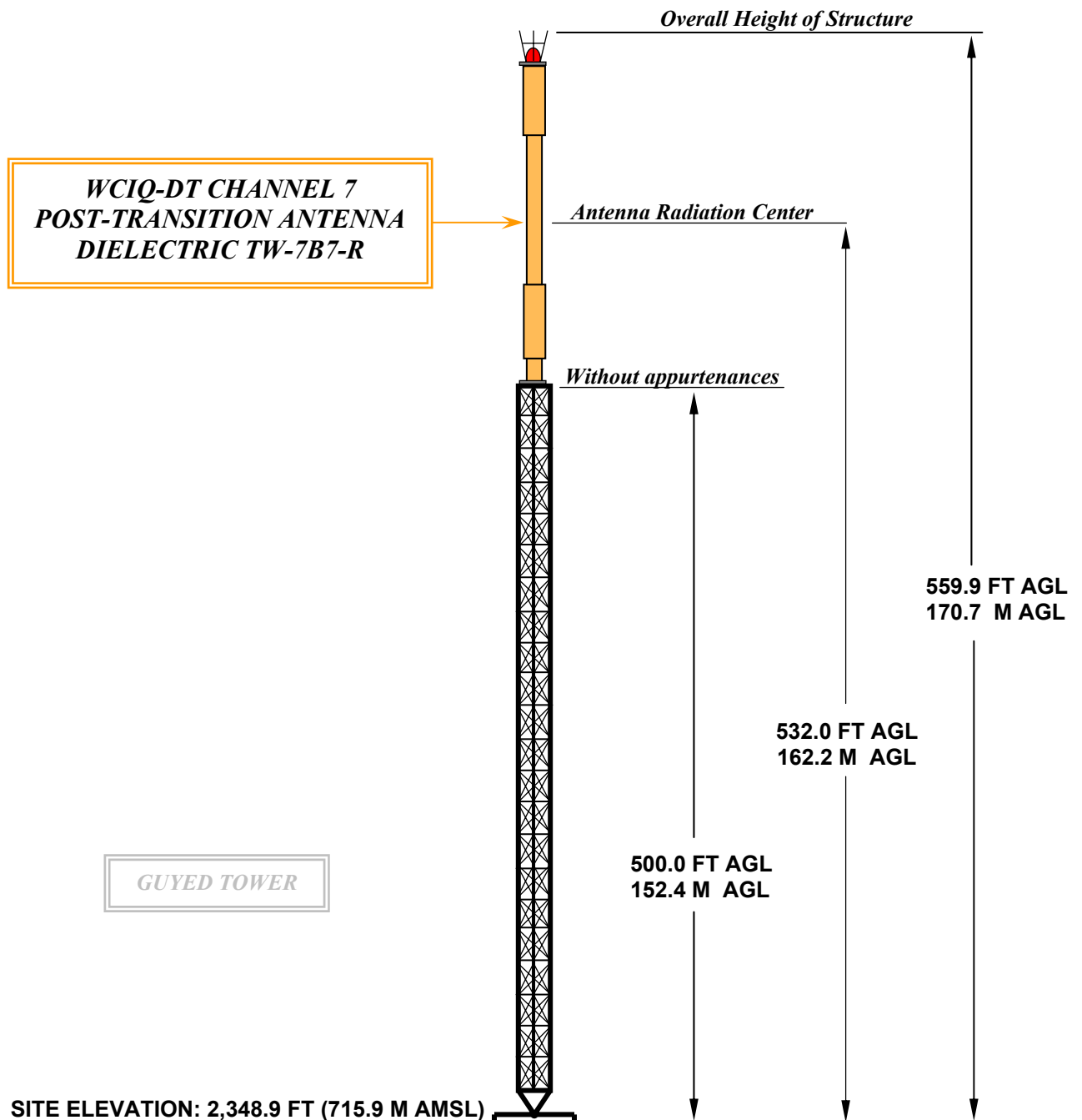
MOUNT CHEAHA, ALABAMA

DATA FOR PROPOSED NONDIRECTIONAL TRANSMITTING ANTENNA

- A. **Antenna:** Dielectric Model TW-7B7-R, horizontally polarized, nondirectional, top-mount antenna.
- B. **Electrical Beam Tilt:** 0.75 degrees
- C. **Mechanical Beam Tilt:** None
- D.

<u>RMS Gain</u>	<u>Horizontal Polarization</u>
Maximum:	7.0 (8.45 dBd)
Horizontal:	6.8 (8.33 dBd)
- E. **Length:** 50.9 feet (15.5 meters) not including appurtenances.
- F. **Transmitter Power Output (TPO):** 5.9 kW
- G. **Transmission Line:** 3-1/8" 50-ohm EIA/DCA
- H. **Transmission Line Efficiency:** 84.7%
- I. **Transmission Line Length:** 550 feet (167.6 meters)
- J. **Transmission Line Loss:** 0.131 dB/100 ft
- K. **Transmission Line Attenuation:** 0.72 dB

WCIQ-DT POST-TRANSITION ELEVATION VIEW



OVERALL HEIGHT AGL:	170.7 M
OVERALL HEIGHT AMSL:	886.6 M
RADIATION CENTER AGL:	162.2 M
RADIATION CENTER AMSL:	878.1 M
RADIATION CENTER HAAT:	575.8 M
AVG OF ALL NON-ODD RADIALS:	302.3 M
SITE HAAT:	413.6 M

COORDINATES (NAD 27):

N. LATITUDE 33° 29' 06"

W. LONGITUDE 85° 48' 32"

Antenna Structure Registration Number:
1036421

NOTE: NOT TO SCALE

KESSLER AND GEHMAN

TELECOMMUNICATIONS CONSULTING ENGINEERS

507 N.W. 60th Street, Suite C
Gainesville, Florida 32607

WCIQ-DT CHANNEL 7

Mt. Cheaha, Alabama

20080616

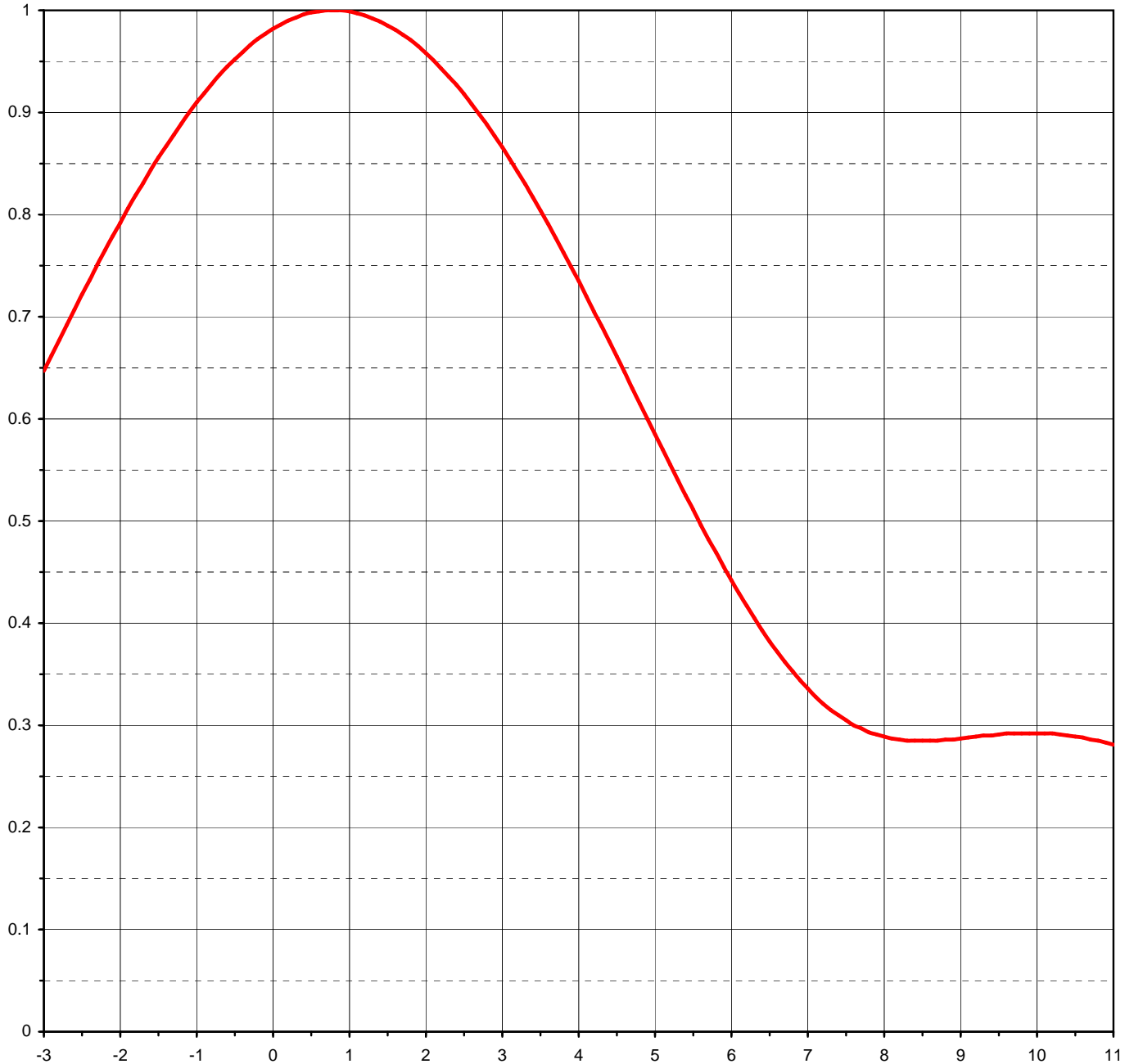
EXHIBIT 3



Proposal Number	C-02341	
Date	19-Feb-08	
Call Letters	WCIQ	Channel 7
Location	Mt. Cheha, AL	
Customer	Alabama Public TV	
Antenna Type	TW-7B7-R	

ELEVATION PATTERN

RMS Gain at Main Lobe	7.00 (8.45 dB)	Beam Tilt	0.75 deg
RMS Gain at Horizontal	6.80 (8.33 dB)	Frequency	177.00 MHz
Calculated / Measured	Calculated	Drawing #	16W070075



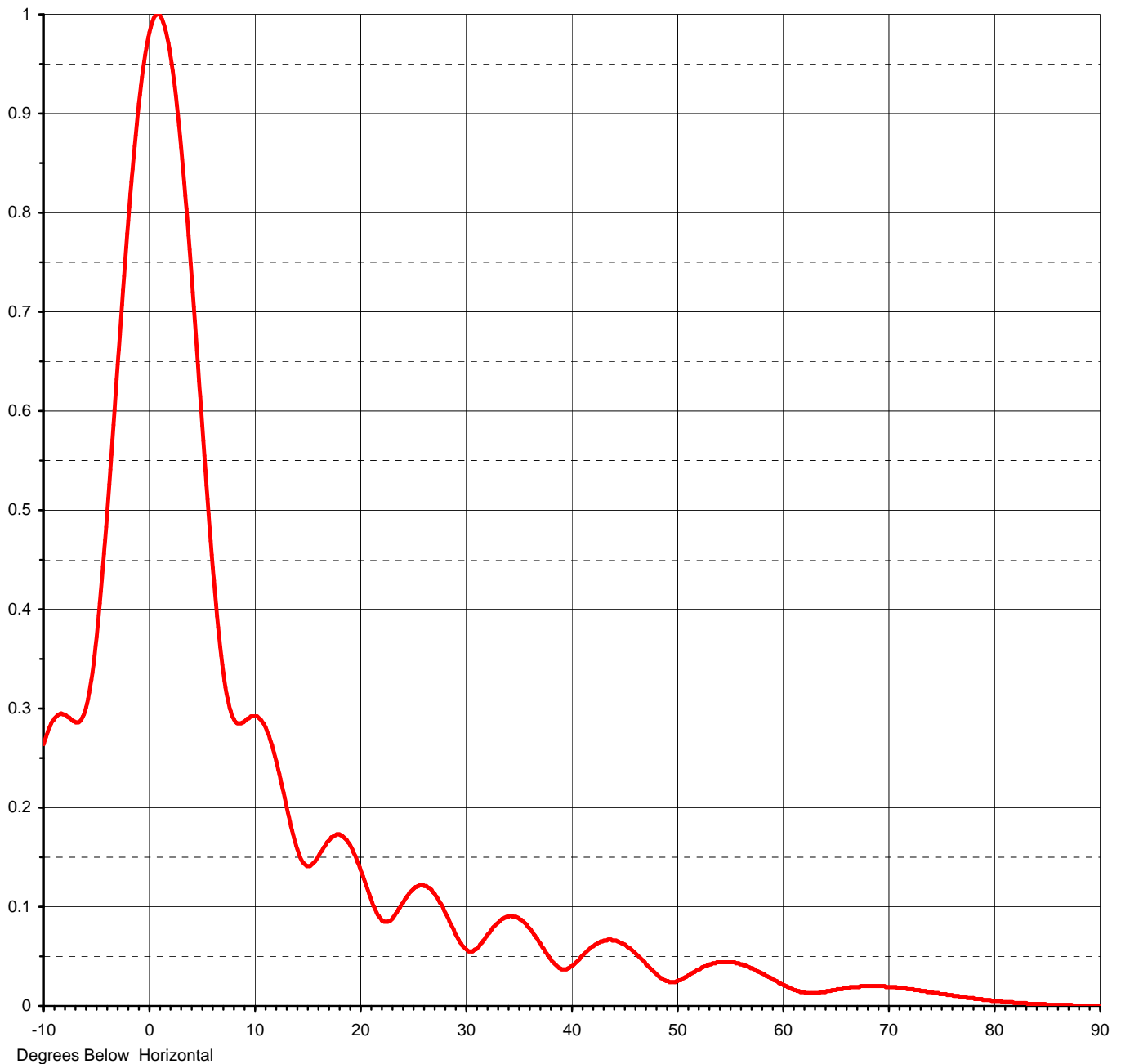
Degrees Below Horizontal



Proposal Number	C-02341	
Date	19-Feb-08	
Call Letters	WCIQ	Channel 7
Location	Mt. Cheha, AL	
Customer	Alabama Public TV	
Antenna Type	TW-7B7-R	

ELEVATION PATTERN

RMS Gain at Main Lobe	7.00 (8.45 dB)	Beam Tilt	0.75 deg
RMS Gain at Horizontal	6.80 (8.33 dB)	Frequency	177.00 MHz
Calculated / Measured	Calculated	Drawing #	16W070075-90



This document contains proprietary and confidential information of Dielectric Communications and SPX Corporation. It is to be used solely for the purpose for which it is provided. No disclosure, reproduction, or use of this document or any part of it may be made without the written permission of Dielectric Communications or SPX Corporation.



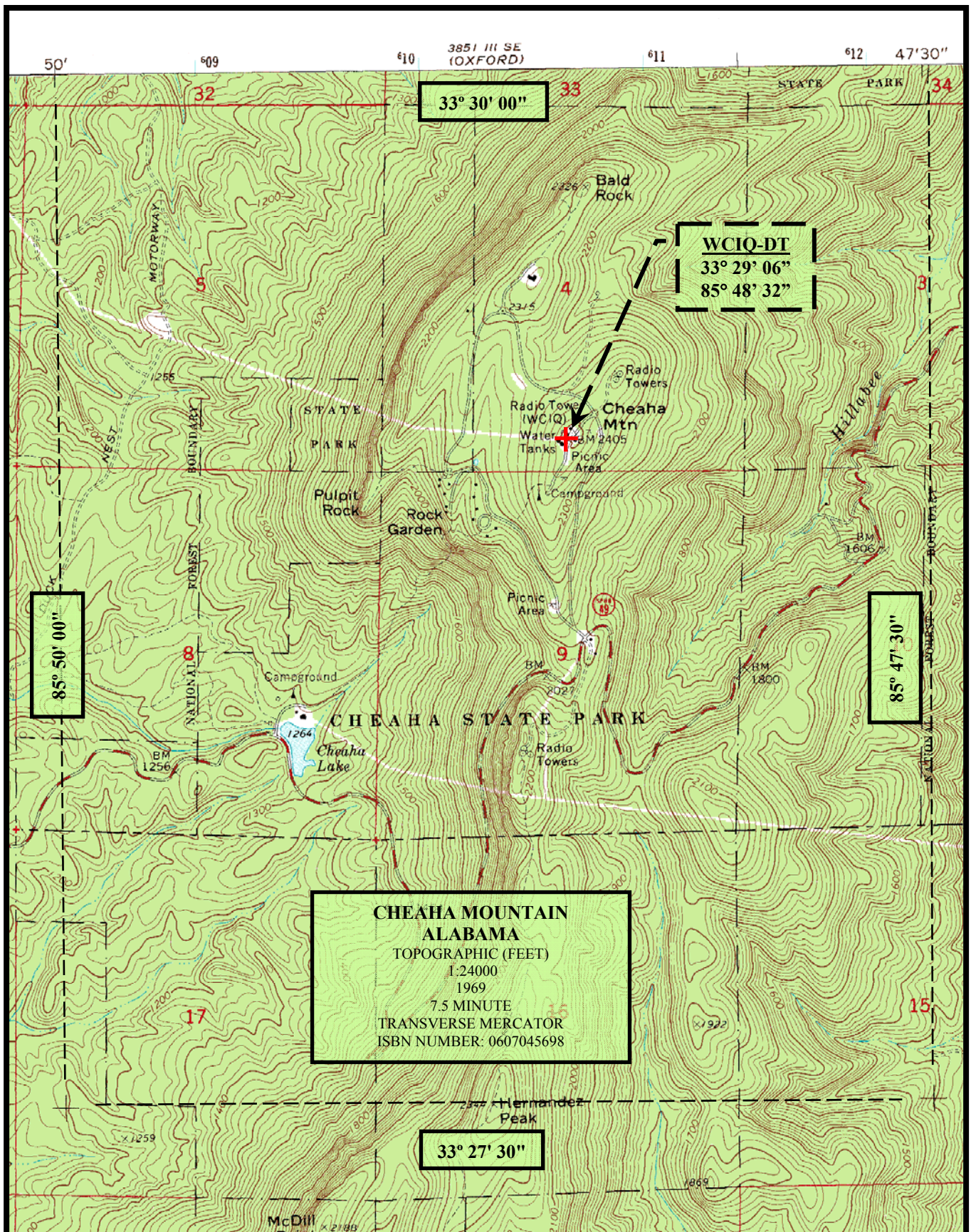
Proposal Number **C-02341**
Date **19-Feb-08**
Call Letters **WCIQ** Channel **7**
Location **Mt. Cheha, AL**
Customer **Alabama Public TV**
Antenna Type **TW-7B7-R**

TABULATION OF ELEVATION PATTERN

Elevation Pattern Drawing #: **16W070075-90**

Angle	Field	Angle	Field	Angle	Field	Angle	Field	Angle	Field	Angle	Field
-10.0	0.264	2.4	0.927	10.6	0.289	30.5	0.055	51.0	0.030	71.5	0.018
-9.5	0.280	2.6	0.908	10.8	0.286	31.0	0.057	51.5	0.033	72.0	0.017
-9.0	0.290	2.8	0.888	11.0	0.283	31.5	0.063	52.0	0.036	72.5	0.016
-8.5	0.294	3.0	0.866	11.5	0.269	32.0	0.070	52.5	0.039	73.0	0.015
-8.0	0.294	3.2	0.842	12.0	0.251	32.5	0.077	53.0	0.041	73.5	0.015
-7.5	0.290	3.4	0.817	12.5	0.229	33.0	0.083	53.5	0.043	74.0	0.014
-7.0	0.286	3.6	0.791	13.0	0.205	33.5	0.088	54.0	0.044	74.5	0.013
-6.5	0.288	3.8	0.763	13.5	0.181	34.0	0.090	54.5	0.044	75.0	0.012
-6.0	0.301	4.0	0.735	14.0	0.161	34.5	0.090	55.0	0.044	75.5	0.011
-5.5	0.329	4.2	0.705	14.5	0.147	35.0	0.089	55.5	0.044	76.0	0.011
-5.0	0.372	4.4	0.676	15.0	0.141	35.5	0.085	56.0	0.042	76.5	0.010
-4.5	0.430	4.6	0.646	15.5	0.143	36.0	0.079	56.5	0.041	77.0	0.009
-4.0	0.498	4.8	0.615	16.0	0.149	36.5	0.072	57.0	0.038	77.5	0.008
-3.5	0.571	5.0	0.585	16.5	0.158	37.0	0.064	57.5	0.036	78.0	0.008
-3.0	0.647	5.2	0.555	17.0	0.166	37.5	0.056	58.0	0.033	78.5	0.007
-2.8	0.677	5.4	0.525	17.5	0.171	38.0	0.048	58.5	0.030	79.0	0.006
-2.6	0.707	5.6	0.496	18.0	0.173	38.5	0.042	59.0	0.028	79.5	0.006
-2.4	0.736	5.8	0.469	18.5	0.170	39.0	0.038	59.5	0.025	80.0	0.005
-2.2	0.765	6.0	0.442	19.0	0.164	39.5	0.037	60.0	0.022	80.5	0.005
-2.0	0.792	6.2	0.417	19.5	0.153	40.0	0.040	60.5	0.019	81.0	0.004
-1.8	0.819	6.4	0.393	20.0	0.140	40.5	0.044	61.0	0.017	81.5	0.004
-1.6	0.844	6.6	0.372	20.5	0.125	41.0	0.050	61.5	0.015	82.0	0.003
-1.4	0.867	6.8	0.353	21.0	0.110	41.5	0.055	62.0	0.014	82.5	0.003
-1.2	0.889	7.0	0.336	21.5	0.097	42.0	0.060	62.5	0.013	83.0	0.003
-1.0	0.910	7.2	0.321	22.0	0.088	42.5	0.063	63.0	0.013	83.5	0.002
-0.8	0.928	7.4	0.310	22.5	0.085	43.0	0.065	63.5	0.013	84.0	0.002
-0.6	0.945	7.6	0.300	23.0	0.087	43.5	0.067	64.0	0.014	84.5	0.002
-0.4	0.959	7.8	0.293	23.5	0.094	44.0	0.066	64.5	0.015	85.0	0.001
-0.2	0.972	8.0	0.289	24.0	0.103	44.5	0.065	65.0	0.016	85.5	0.001
0.0	0.982	8.2	0.286	24.5	0.111	45.0	0.062	65.5	0.017	86.0	0.001
0.2	0.990	8.4	0.285	25.0	0.117	45.5	0.059	66.0	0.018	86.5	0.001
0.4	0.996	8.6	0.285	25.5	0.121	46.0	0.054	66.5	0.019	87.0	0.001
0.6	0.999	8.8	0.286	26.0	0.122	46.5	0.049	67.0	0.019	87.5	0.000
0.8	1.000	9.0	0.287	26.5	0.119	47.0	0.044	67.5	0.020	88.0	0.000
1.0	0.999	9.2	0.289	27.0	0.114	47.5	0.038	68.0	0.020	88.5	0.000
1.2	0.995	9.4	0.290	27.5	0.106	48.0	0.033	68.5	0.020	89.0	0.000
1.4	0.989	9.6	0.292	28.0	0.096	48.5	0.028	69.0	0.020	89.5	0.000
1.6	0.981	9.8	0.292	28.5	0.085	49.0	0.025	69.5	0.020	90.0	0.000
1.8	0.971	10.0	0.292	29.0	0.074	49.5	0.024	70.0	0.019		
2.0	0.958	10.2	0.292	29.5	0.064	50.0	0.025	70.5	0.019		
2.2	0.943	10.4	0.291	30.0	0.058	50.5	0.027	71.0	0.018		

This document contains proprietary and confidential information of Dielectric Communications and SPX Corporation. It is to be used solely for the purpose for which it is provided. No disclosure, reproduction, or use of this document or any part of it may be made without the written permission of Dielectric Communications or SPX Corporation.



KESSLER AND GEHMAN

TELECOMMUNICATIONS CONSULTING ENGINEERS

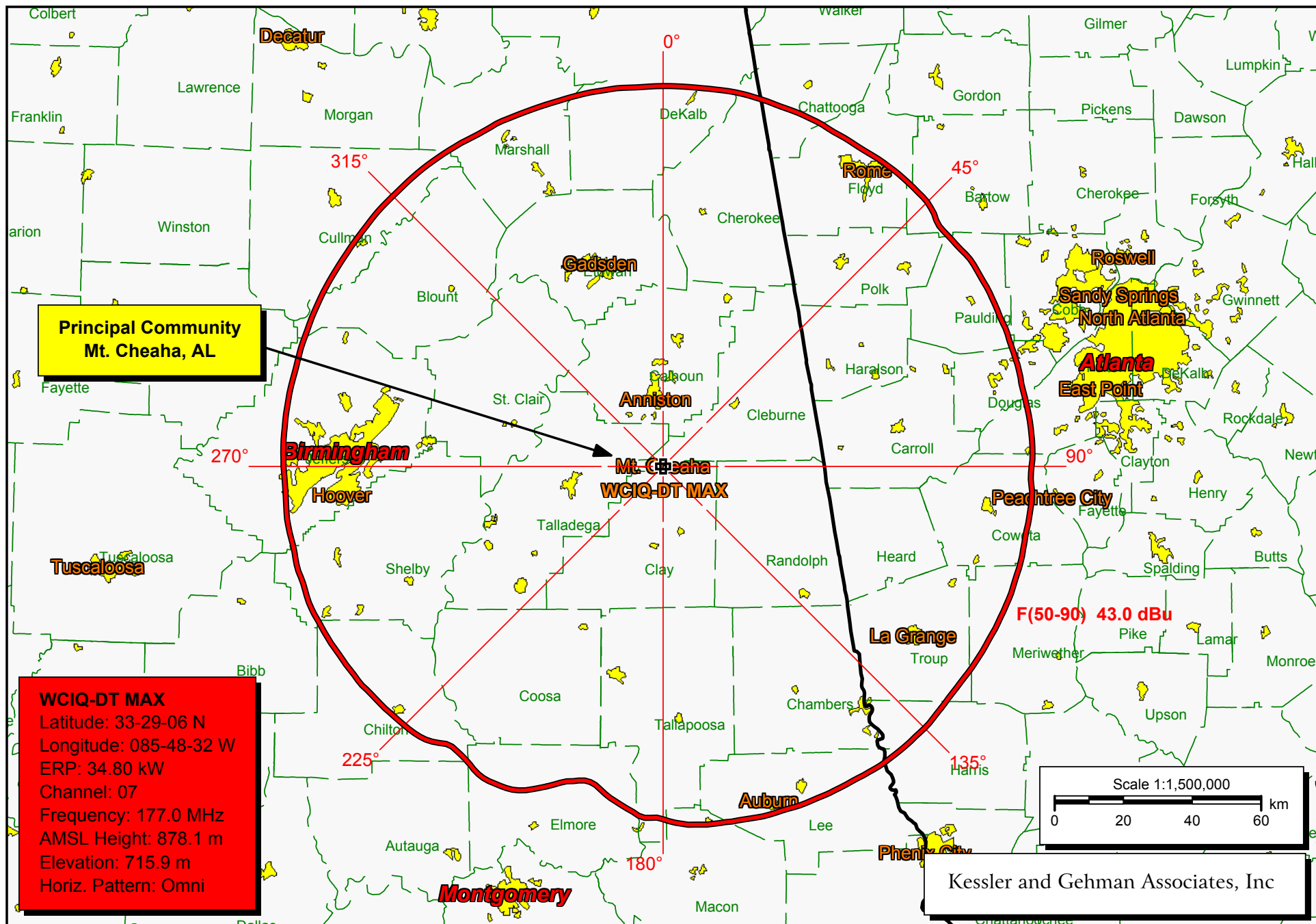
507 N.W. 60th Street, Suite C
Gainesville, Florida 32607

WCIQ-DT CHANNEL 7

MOUNT CHEAHA, ALABAMA

20080616

EXHIBIT 7



WCIQ-DT Channel 7 F(50,90) 43.0 dBuV/m Principal Community Contour



TV INTERFERENCE and SPACING ANALYSIS PROGRAM

Date: 06-08-2008 Time: 14:08:39

Record Selected for Analysis

WCIQ-DT USERRECORD-01 MOUNT CHEAHA AL US
Channel 07 ERP 34.8 kW HAAT 576. m RCAMSL 00878 m
Latitude 033-29-06 Longitude 0085-48-32
Status APP Zone 2 Border
Dir Antenna Make usr Model USRPAT01 Beam tilt N Ref Azimuth 0.
Last update Cutoff date Docket
Comments
Applicant

Cell Size for Service Analysis 2.0 km/side

Distance Increments for Longley-Rice Analysis 1.00 km

Facility meets maximum height/power limits

Azimuth (Deg)	ERP (kW)	HAAT (m)	36.0 dBu F(50,90) (km)
0.0	34.800	631.0	126.3
45.0	34.800	578.5	122.9
90.0	34.800	549.3	120.7
135.0	34.800	560.0	121.5
180.0	34.800	482.2	117.0
225.0	34.800	536.3	119.8
270.0	34.800	624.2	125.9
315.0	34.800	648.8	127.1

Evaluation toward Class A Stations

No Spacing violations or contour overlap to Class A stations

Class A Evaluation Complete

SPACING VIOLATION FOUND BETWEEN STATION

WCIQ-DT 07 MOUNT CHEAHA AL USERRECORD01

and station

SHORT TO: WCIQ 07 MOUNT CHEAHA AL BDTV 0054
 33 -29-07 085 -48-33
 Req. separation 273.6 Actual separation 0.0 Short 273.6 km

SHORT TO: WDCO-TV 07 COCHRAN GA BDTV 0405
 32 -28-11 083 -15-17
 Req. separation 273.6 Actual separation 264.0 Short 9.6 km

Proposed facility OK to FCC Monitoring Stations

Proposed facility OK toward West Virginia quite zone

Proposed facility OK toward Table Mountain

Proposed facility is beyond the Canadian coordination distance

Proposed facility is beyond the Mexican coordination distance

Proposed station is OK toward AM broadcast stations

Start of Interference Analysis

Channel	Proposed Station Call	City/State	ARN
07	WCIQ-DT	MOUNT CHEAHA AL	USERRECORD01

Stations Potentially Affected by Proposed Station

Chan	Call	City/State	Dist(km)	Status	Application	Ref. No.
07	WJHG-TV	PANAMA CITY FL	341.2	LIC	BDTV	-0353
07	WDCO-TV	COCHRAN GA	263.5	LIC	BDTV	-0405
07	WSPA-TV	SPARTANBURG SC	373.3	LIC	BDTV	-1413
07	WMAK	KNOXVILLE TN	328.8	LIC	BDTV	-1459
08	WGTW	ATHENS GA	158.1	LIC	BDTV	-0386
08	WACS-TV	DAWSON GA	208.2	LIC	BDTV	-0413

%%%%%%%%%%%%%%%%%%%%%%%%%%%%%%%%%%%%%%%%%%%%%%%%%%%%%%%%%%%%%%%%%%%%%%%%%

Analysis of Interference to Affected Station 1

Analysis of current record

Channel	Call	City/State	Application	Ref. No.
07	WJHG-TV	PANAMA CITY FL	BDTV	-0353

Stations Potentially Affecting This Station

Chan	Call	City/State	Dist(km)	Status	Application	Ref. No.
07	WJCT	JACKSONVILLE FL	369.1	LIC	BDTV	-0313
07	WFLA-TV	TAMPA FL	420.2	LIC	BDTV	-0371
07	WDCO-TV	COCHRAN GA	305.2	LIC	BDTV	-0405

08	WACS-TV	DAWSON GA	186.1	LIC	BDTV	-0413
07	WCIQ-DT	MOUNT CHEAHA AL	341.2	APP	USERRECORD-01	

Total scenarios = 1

Result key: 1
 Scenario 1 Affected station 1
 Before Analysis

Results for: 7A FL PANAMA CITY BDTV 0353 LIC
 HAAT 244.0 m, ATV ERP 52.0 kW

	POPULATION	AREA (sq km)
within Noise Limited Contour	375293	25990.1
not affected by terrain losses	374076	25913.9
lost to NTSC IX	0	0.0
lost to additional IX by ATV	1419	48.1
lost to ATV IX only	1419	48.1
lost to all IX	1419	48.1

Potential Interfering Stations Included in above Scenario 1

7A FL JACKSONVILLE	BDTV	0313	LIC
7A GA COCHRAN	BDTV	0405	LIC

After Analysis

Results for: 7A FL PANAMA CITY BDTV 0353 LIC
 HAAT 244.0 m, ATV ERP 52.0 kW

	POPULATION	AREA (sq km)
within Noise Limited Contour	375293	25990.1
not affected by terrain losses	374076	25913.9
lost to NTSC IX	0	0.0
lost to additional IX by ATV	1455	60.2
lost to ATV IX only	1455	60.2
lost to all IX	1455	60.2

Potential Interfering Stations Included in above Scenario 1

7A FL JACKSONVILLE	BDTV	0313	LIC
7A GA COCHRAN	BDTV	0405	LIC
7A AL MOUNT CHEAHA	USERRECORD01		APP
*Percent Service lost without proposal:	0.0	to BDTV	0353
*Percent Service lost with proposal:	0.0	to BDTV	0353

#####

Analysis of Interference to Affected Station 2

Analysis of current record

Channel	Call	City/State	Application	Ref. No.
07	WDCO-TV	COCHRAN GA	BDTV	-0405

Stations Potentially Affecting This Station

Chan	Call	City/State	Dist(km)	Status	Application	Ref. No.
07	WJCT	JACKSONVILLE FL	291.1	LIC	BDTV	-0313
07	WJHG-TV	PANAMA CITY FL	305.2	LIC	BDTV	-0353
07	WITV	CHARLESTON SC	336.4	LIC	BDTV	-1385
07	WSPA-TV	SPARTANBURG SC	313.1	LIC	BDTV	-1413
07	WMAK	KNOXVILLE TN	398.4	LIC	BDTV	-1459
08	WGTV	ATHENS GA	170.0	LIC	BDTV	-0386
08	WACS-TV	DAWSON GA	135.8	LIC	BDTV	-0413
08	WXGA-TV	WAYCROSS GA	152.9	LIC	BDTV	-0429
07	WCIQ-DT	MOUNT CHEAHA AL	263.5	APP	USERRECORD-01	

Total scenarios = 1

Result key: 2
Scenario 1 Affected station 2
Before Analysis

Results for: 7A GA COCHRAN BDTV 0405 LIC
HAAT 369.0 m, ATV ERP 22.0 kW

	POPULATION	AREA (sq km)
within Noise Limited Contour	802101	33928.1
not affected by terrain losses	798555	33501.3
lost to NTSC IX	0	0.0
lost to additional IX by ATV	10698	314.0
lost to ATV IX only	10698	314.0
lost to all IX	10698	314.0

Potential Interfering Stations Included in above Scenario 1

7A FL JACKSONVILLE	BDTV	0313	LIC
7A FL PANAMA CITY	BDTV	0353	LIC
7A SC CHARLESTON	BDTV	1385	LIC
7A SC SPARTANBURG	BDTV	1413	LIC
8A GA DAWSON	BDTV	0413	LIC

After Analysis

Results for: 7A GA COCHRAN BDTV 0405 LIC
HAAT 369.0 m, ATV ERP 22.0 kW

	POPULATION	AREA (sq km)
within Noise Limited Contour	802101	33928.1
not affected by terrain losses	798555	33501.3
lost to NTSC IX	0	0.0
lost to additional IX by ATV	15219	748.8
lost to ATV IX only	15219	748.8
lost to all IX	15219	748.8

Potential Interfering Stations Included in above Scenario 1

7A FL JACKSONVILLE	BDTV	0313	LIC
7A FL PANAMA CITY	BDTV	0353	LIC
7A SC CHARLESTON	BDTV	1385	LIC
7A SC SPARTANBURG	BDTV	1413	LIC
8A GA DAWSON	BDTV	0413	LIC
7A AL MOUNT CHEAHA	USERRECORD01		APP

*Percent Service lost without proposal: 0.0 to BDTV 0405
 *Percent Service lost with proposal: 0.6 to BDTV 0405

#####

Analysis of Interference to Affected Station 3

Analysis of current record

Channel	Call	City/State	Application	Ref. No.
07	WSPA-TV	SPARTANBURG SC	BDTV	-1413

Stations Potentially Affecting This Station

Chan	Call	City/State	Dist(km)	Status	Application	Ref. No.
07	WDCO-TV	COCHRAN GA	313.1	LIC	BDTV	-0405
07	WLJC-TV	BEATTYVILLE KY	298.3	LIC	BDTV	-0633
07	WITV	CHARLESTON SC	345.3	LIC	BDTV	-1385
07	WMAK	KNOXVILLE TN	175.3	LIC	BDTV	-1459
08	WGTW	ATHENS GA	227.7	LIC	BDTV	-0386
08	WOLO-TV	COLUMBIA SC	182.2	LIC	BDTV	-1391
07	WCIQ-DT	MOUNT CHEAHA AL	373.3	APP	USERRECORD-01	

Total scenarios = 1

Result key: 3
 Scenario 1 Affected station 3
 Before Analysis

Results for: 7A SC SPARTANBURG BDTV 1413 LIC
 HAAT 657.0 m, ATV ERP 20.5 kW

	POPULATION	AREA (sq km)
within Noise Limited Contour	2870685	44575.1
not affected by terrain losses	2756732	41256.5
lost to NTSC IX	0	0.0
lost to additional IX by ATV	10853	596.5
lost to ATV IX only	10853	596.5
lost to all IX	10853	596.5

Potential Interfering Stations Included in above Scenario 1

7A GA COCHRAN	BDTV	0405	LIC
7A KY BEATTYVILLE	BDTV	0633	LIC
7A SC CHARLESTON	BDTV	1385	LIC
7A TN KNOXVILLE	BDTV	1459	LIC
8A SC COLUMBIA	BDTV	1391	LIC

After Analysis

Results for: 7A SC SPARTANBURG BDTV 1413 LIC
 HAAT 657.0 m, ATV ERP 20.5 kW

	POPULATION	AREA (sq km)
within Noise Limited Contour	2870685	44575.1
not affected by terrain losses	2756732	41256.5

lost to NTSC IX	0	0.0
lost to additional IX by ATV	11100	616.5
lost to ATV IX only	11100	616.5
lost to all IX	11100	616.5

Potential Interfering Stations Included in above Scenario 1

7A GA COCHRAN	BDTV	0405	LIC
7A KY BEATTYVILLE	BDTV	0633	LIC
7A SC CHARLESTON	BDTV	1385	LIC
7A TN KNOXVILLE	BDTV	1459	LIC
8A SC COLUMBIA	BDTV	1391	LIC
7A AL MOUNT CHEAHA	USERRECORD01		APP
*Percent Service lost without proposal:	0.0	to BDTV	1413
*Percent Service lost with proposal:	0.0	to BDTV	1413

#####

Analysis of Interference to Affected Station 4

Analysis of current record

Channel	Call	City/State	Application	Ref. No.
07	WMAK	KNOXVILLE TN	BDTV	-1459

Stations Potentially Affecting This Station

Chan	Call	City/State	Dist(km)	Status	Application	Ref. No.
07	WDCO-TV	COCHRAN GA	398.4	LIC	BDTV	-0405
07	WEHT	EVANSVILLE IN	383.2	LIC	BDTV	-0568
07	WLJC-TV	BEATTYVILLE KY	179.7	LIC	BDTV	-0633
07	WSPA-TV	SPARTANBURG SC	175.3	LIC	BDTV	-1413
07	WCIQ-DT	MOUNT CHEAHA AL	328.8	APP	USERRECORD-01	

Total scenarios = 1

Result key: 4
 Scenario 1 Affected station 4
 Before Analysis

Results for: 7A TN KNOXVILLE BDTV 1459 LIC
 HAAT 382.0 m, ATV ERP 55.0 kW

	POPULATION	AREA (sq km)
within Noise Limited Contour	1504930	35897.3
not affected by terrain losses	1310560	29002.1
lost to NTSC IX	0	0.0
lost to additional IX by ATV	32805	1265.0
lost to ATV IX only	32805	1265.0
lost to all IX	32805	1265.0

Potential Interfering Stations Included in above Scenario 1

7A GA COCHRAN	BDTV	0405	LIC
7A IN EVANSVILLE	BDTV	0568	LIC

7A KY BEATTYVILLE	BDTV	0633	LIC
7A SC SPARTANBURG	BDTV	1413	LIC

After Analysis

Results for: 7A TN KNOXVILLE BDTV 1459 LIC
 HAAT 382.0 m, ATV ERP 55.0 kW

	POPULATION	AREA (sq km)
within Noise Limited Contour	1504930	35897.3
not affected by terrain losses	1310560	29002.1
lost to NTSC IX	0	0.0
lost to additional IX by ATV	35312	1345.3
lost to ATV IX only	35312	1345.3
lost to all IX	35312	1345.3

Potential Interfering Stations Included in above Scenario 1

7A GA COCHRAN	BDTV	0405	LIC
7A IN EVANSVILLE	BDTV	0568	LIC
7A KY BEATTYVILLE	BDTV	0633	LIC
7A SC SPARTANBURG	BDTV	1413	LIC
7A AL MOUNT CHEAHA	USERRECORD01		APP
*Percent Service lost without proposal:	0.0	to BDTV	1459
*Percent Service lost with proposal:	0.2	to BDTV	1459

#####

Analysis of Interference to Affected Station 5

Analysis of current record

Channel	Call	City/State	Application Ref. No.
08	WGTV	ATHENS GA	BDTV -0386

Stations Potentially Affecting This Station

Chan	Call	City/State	Dist(km)	Status	Application Ref. No.
07	WDCO-TV	COCHRAN GA	170.0	LIC	BDTV -0405
07	WSPA-TV	SPARTANBURG SC	227.7	LIC	BDTV -1413
08	WACS-TV	DAWSON GA	211.1	LIC	BDTV -0413
08	WXGA-TV	WAYCROSS GA	322.7	LIC	BDTV -0429
08	WOLO-TV	COLUMBIA SC	313.5	LIC	BDTV -1391
08	WNPT	NASHVILLE TN	349.3	LIC	BDTV -1478
09	WJSU-TV	ANNISTON AL	211.3	LIC	BDTV -0019
09	WTVM	COLUMBUS GA	175.0	LIC	BDTV -0406
09	WNTV	GREENVILLE SC	203.1	LIC	BDTV -1403
09	WTVC	CHATTANOOGA TN	185.1	LIC	BDTV -1443
07	WCIQ-DT	MOUNT CHEAHA AL	158.1	APP	USERRECORD-01

Total scenarios = 1

Result key: 5
 Scenario 1 Affected station 5
 Before Analysis

Results for: 8A GA ATHENS BDTV 0386 LIC
 HAAT 326.0 m, ATV ERP 15.9 kW

	POPULATION	AREA (sq km)
within Noise Limited Contour	4693464	30083.8
not affected by terrain losses	4651135	28846.7
lost to NTSC IX	0	0.0
lost to additional IX by ATV	17373	731.0
lost to ATV IX only	17373	731.0
lost to all IX	17373	731.0

Potential Interfering Stations Included in above Scenario 1

8A GA DAWSON	BDTV	0413	LIC
8A GA WAYCROSS	BDTV	0429	LIC
8A SC COLUMBIA	BDTV	1391	LIC
8A TN NASHVILLE	BDTV	1478	LIC

After Analysis

Results for: 8A GA ATHENS BDTV 0386 LIC
 HAAT 326.0 m, ATV ERP 15.9 kW

	POPULATION	AREA (sq km)
within Noise Limited Contour	4693464	30083.8
not affected by terrain losses	4651135	28846.7
lost to NTSC IX	0	0.0
lost to additional IX by ATV	21486	779.2
lost to ATV IX only	21486	779.2
lost to all IX	21486	779.2

Potential Interfering Stations Included in above Scenario 1

8A GA DAWSON	BDTV	0413	LIC
8A GA WAYCROSS	BDTV	0429	LIC
8A SC COLUMBIA	BDTV	1391	LIC
8A TN NASHVILLE	BDTV	1478	LIC
7A AL MOUNT CHEAHA	USERRECORD01		APP
*Percent Service lost without proposal:	0.0	to BDTV	0386
*Percent Service lost with proposal:	0.1	to BDTV	0386

#####

Analysis of Interference to Affected Station 6

Analysis of current record

Channel	Call	City/State	Application	Ref. No.
08	WACS-TV	DAWSON GA	BDTV	-0413

Stations Potentially Affecting This Station

Chan	Call	City/State	Dist(km)	Status	Application	Ref. No.
07	WJHG-TV	PANAMA CITY FL	186.1	LIC	BDTV	-0353
07	WDCO-TV	COCHRAN GA	135.8	LIC	BDTV	-0405
08	WGTV	ATHENS GA	211.1	LIC	BDTV	-0386

08	WXGA-TV	WAYCROSS GA	203.8	LIC	BDTV	-0429
08	WOLO-TV	COLUMBIA SC	428.2	LIC	BDTV	-1391
09	WPGX	PANAMA CITY FL	195.1	LIC	BDTV	-0354
09	WTVM	COLUMBUS GA	47.9	LIC	BDTV	-0406
07	WCIQ-DT	MOUNT CHEAHA AL	208.2	APP	USERRECORD-01	

Proposal causes no interference

#####

Analysis of Interference to Affected Station 7

Analysis of current record

Channel	Call	City/State	Application Ref. No.
07	WCIQ-DT	MOUNT CHEAHA AL	USERRECORD-01

Stations Potentially Affecting This Station

Chan	Call	City/State	Dist(km)	Status	Application Ref. No.
07	WJHG-TV	PANAMA CITY FL	341.2	LIC	BDTV -0353
07	WDCO-TV	COCHRAN GA	263.5	LIC	BDTV -0405
07	WSPA-TV	SPARTANBURG SC	373.3	LIC	BDTV -1413
07	WMAK	KNOXVILLE TN	328.8	LIC	BDTV -1459
08	WGTV	ATHENS GA	158.1	LIC	BDTV -0386
08	WACS-TV	DAWSON GA	208.2	LIC	BDTV -0413

Total scenarios = 1

Result key: 6
Scenario 1 Affected station 7
Before Analysis

Results for: 7A AL MOUNT CHEAHA USERRECORD01 APP
HAAT 576.0 m, ATV ERP 34.8 kW

	POPULATION	AREA (sq km)
within Noise Limited Contour	2712108	47271.9
not affected by terrain losses	2604495	45237.3
lost to NTSC IX	0	0.0
lost to additional IX by ATV	103952	809.8
lost to ATV IX only	103952	809.8
lost to all IX	103952	809.8

Potential Interfering Stations Included in above Scenario 1

7A FL PANAMA CITY	BDTV	0353	LIC
7A GA COCHRAN	BDTV	0405	LIC
7A SC SPARTANBURG	BDTV	1413	LIC
7A TN KNOXVILLE	BDTV	1459	LIC
8A GA ATHENS	BDTV	0386	LIC

#####

FINISHED FINISHED FINISHED FINISHED FINISHED FINISHED

TV INTERFERENCE and SPACING ANALYSIS PROGRAM

Date: 06-08-2008 Time: 14:13:43

Record Selected for Analysis

WCIQ-DT USERRECORD-01 MOUNT CHEAHA_2 AL US
Channel 07 ERP 34.8 kW HAAT 576. m RCAMSL 00878 m
Latitude 033-29-06 Longitude 0085-48-32
Status APP Zone 2 Border
Dir Antenna Make usr Model USRPAT01 Beam tilt N Ref Azimuth 0.
Last update Cutoff date Docket
Comments
Applicant

Cell Size for Service Analysis 2.0 km/side

Distance Increments for Longley-Rice Analysis 1.00 km

Facility meets maximum height/power limits

Azimuth (Deg)	ERP (kW)	HAAT (m)	36.0 dBu F(50,90) (km)
0.0	34.800	631.0	126.3
45.0	34.800	578.5	122.9
90.0	34.800	549.3	120.7
135.0	34.800	560.0	121.5
180.0	34.800	482.2	117.0
225.0	34.800	536.3	119.8
270.0	34.800	624.2	125.9
315.0	34.800	648.8	127.1

Evaluation toward Class A Stations

No Spacing violations or contour overlap to Class A stations

Class A Evaluation Complete

SPACING VIOLATION FOUND BETWEEN STATION

WCIQ-DT 07 MOUNT CHEAHA_2 AL USERRECORD01

and station

SHORT TO: WCIQ 07 MOUNT CHEAHA AL BDTV 0054
 33 -29-07 085 -48-33
 Req. separation 273.6 Actual separation 0.0 Short 273.6 km

SHORT TO: WDCO-TV 07 COCHRAN GA BDTV 0405
 32 -28-11 083 -15-17
 Req. separation 273.6 Actual separation 264.0 Short 9.6 km

Proposed facility OK to FCC Monitoring Stations

Proposed facility OK toward West Virginia quite zone

Proposed facility OK toward Table Mountain

Proposed facility is beyond the Canadian coordination distance

Proposed facility is beyond the Mexican coordination distance

Proposed station is OK toward AM broadcast stations

Start of Interference Analysis

Channel	Proposed Station Call	City/State	ARN
07	WCIQ-DT	MOUNT CHEAHA_2 AL	USERRECORD01

Stations Potentially Affected by Proposed Station

Chan	Call	City/State	Dist(km)	Status	Application	Ref. No.
07	WCIQ	MOUNT CHEAHA AL	0.0	LIC	BDTV	-0054
07	WJHG-TV	PANAMA CITY FL	341.2	LIC	BDTV	-0353
07	WDCO-TV	COCHRAN GA	263.5	LIC	BDTV	-0405
07	WSPA-TV	SPARTANBURG SC	373.3	LIC	BDTV	-1413
07	WMAK	KNOXVILLE TN	328.8	LIC	BDTV	-1459
08	WGTW	ATHENS GA	158.1	LIC	BDTV	-0386
08	WACS-TV	DAWSON GA	208.2	LIC	BDTV	-0413

%%%%%%%%%%%%%%%%%%%%%%%%%%%%%%%%%%%%%%%%%%%%%%%%%%%%%%%%%%%%%%%%%%%%%%%%%

Analysis of Interference to Affected Station 1

Analysis of current record

Channel	Call	City/State	Application	Ref. No.
07	WCIQ	MOUNT CHEAHA AL	BDTV	-0054

Stations Potentially Affecting This Station

Chan	Call	City/State	Dist(km)	Status	Application	Ref. No.
07	WJHG-TV	PANAMA CITY FL	341.3	LIC	BDTV	-0353
07	WDCO-TV	COCHRAN GA	263.6	LIC	BDTV	-0405

07	WSPA-TV	SPARTANBURG SC	373.3	LIC	BDTV	-1413
07	WMAK	KNOXVILLE TN	328.8	LIC	BDTV	-1459
08	WGTW	ATHENS GA	158.1	LIC	BDTV	-0386
08	WACS-TV	DAWSON GA	208.3	LIC	BDTV	-0413
07	WCIQ-DT	MOUNT CHEAHA_2 AL	0.0	APP	USERRECORD-01	

Total scenarios = 2

Result key: 1
 Scenario 1 Affected station 1
 Before Analysis

Results for: 7A AL MOUNT CHEAHA BDTV 0054 LIC
 HAAT 610.0 m, ATV ERP 24.1 kW

	POPULATION	AREA (sq km)
within Noise Limited Contour	2579282	45256.5
not affected by terrain losses	2455271	43346.8
lost to NTSC IX	0	0.0
lost to additional IX by ATV	92493	733.3
lost to ATV IX only	92493	733.3
lost to all IX	92493	733.3

Potential Interfering Stations Included in above Scenario 1

7A FL PANAMA CITY	BDTV	0353	LIC
7A GA COCHRAN	BDTV	0405	LIC
7A SC SPARTANBURG	BDTV	1413	LIC
7A TN KNOXVILLE	BDTV	1459	LIC
8A GA ATHENS	BDTV	0386	LIC

After Analysis

Results for: 7A AL MOUNT CHEAHA BDTV 0054 LIC
 HAAT 610.0 m, ATV ERP 24.1 kW

	POPULATION	AREA (sq km)
within Noise Limited Contour	2579282	45256.5
not affected by terrain losses	2455271	43346.8
lost to NTSC IX	0	0.0
lost to additional IX by ATV	2083592	36340.6
lost to ATV IX only	2083592	36340.6
lost to all IX	2083592	36340.6

Potential Interfering Stations Included in above Scenario 1

7A FL PANAMA CITY	BDTV	0353	LIC
7A GA COCHRAN	BDTV	0405	LIC
7A SC SPARTANBURG	BDTV	1413	LIC
7A TN KNOXVILLE	BDTV	1459	LIC
8A GA ATHENS	BDTV	0386	LIC
7A AL MOUNT CHEAHA_2	USERRECORD01		APP

The following station failed the de minimis interference criteria.

7D AL MOUNT CHEAHA_2 USERRECORD01
 ERP 34.80 kW HAAT 576.0 m RCAMSL 878.0 m
 Antenna usr USRPAT01

Due to interference to the following station and scenario: 1
 7D AL MOUNT CHEAHA BDTV 0054
 ERP 24.07 kW HAAT 610.0 m RCAMSL 911.0 m
 Antenna CDB 00000000080203

Percent Service lost without proposal: 0.0 to BDTV 0054
 Percent Service lost with proposal: 84.3 to BDTV 0054

Result key: 2
 Scenario 2 Affected station 1
 Before Analysis

Results for: 7A AL MOUNT CHEAHA BDTV 0054 LIC
 HAAT 610.0 m, ATV ERP 24.1 kW

	POPULATION	AREA (sq km)
within Noise Limited Contour	2579282	45256.5
not affected by terrain losses	2455271	43346.8
lost to NTSC IX	0	0.0
lost to additional IX by ATV	92493	733.3
lost to ATV IX only	92493	733.3
lost to all IX	92493	733.3

Potential Interfering Stations Included in above Scenario 2

7A FL PANAMA CITY	BDTV	0353	LIC
7A GA COCHRAN	BDTV	0405	LIC
7A SC SPARTANBURG	BDTV	1413	LIC
7A TN KNOXVILLE	BDTV	1459	LIC
8A GA ATHENS	BDTV	0386	LIC

After Analysis

Results for: 7A AL MOUNT CHEAHA BDTV 0054 LIC
 HAAT 610.0 m, ATV ERP 24.1 kW

	POPULATION	AREA (sq km)
within Noise Limited Contour	2579282	45256.5
not affected by terrain losses	2455271	43346.8
lost to NTSC IX	0	0.0
lost to additional IX by ATV	2083592	36340.6
lost to ATV IX only	2083592	36340.6
lost to all IX	2083592	36340.6

Potential Interfering Stations Included in above Scenario 2

7A FL PANAMA CITY	BDTV	0353	LIC
7A GA COCHRAN	BDTV	0405	LIC
7A SC SPARTANBURG	BDTV	1413	LIC
7A TN KNOXVILLE	BDTV	1459	LIC
8A GA ATHENS	BDTV	0386	LIC
7A AL MOUNT CHEAHA_2	USERRECORD01		APP

The following station failed the de minimis interference criteria.

7D AL MOUNT CHEAHA_2 USERRECORD01
 ERP 34.80 kW HAAT 576.0 m RCAMSL 878.0 m
 Antenna usr USRPAT01

Due to interference to the following station and scenario: 2
 7D AL MOUNT CHEAHA BDTV 0054
 ERP 24.07 kW HAAT 610.0 m RCAMSL 911.0 m
 Antenna CDB 00000000080203

Percent Service lost without proposal: 0.0 to BDTV 0054
 Percent Service lost with proposal: 84.3 to BDTV 0054

#####

Analysis of Interference to Affected Station 2

Analysis of current record

Channel	Call	City/State	Application Ref. No.
07	WJHG-TV	PANAMA CITY FL	BDTV -0353

Stations Potentially Affecting This Station

Chan	Call	City/State	Dist(km)	Status	Application Ref. No.
07	WCIQ	MOUNT CHEAHA AL	341.3	LIC	BDTV -0054
07	WJCT	JACKSONVILLE FL	369.1	LIC	BDTV -0313
07	WFLA-TV	TAMPA FL	420.2	LIC	BDTV -0371
07	WDCO-TV	COCHRAN GA	305.2	LIC	BDTV -0405
08	WACS-TV	DAWSON GA	186.1	LIC	BDTV -0413
07	WCIQ-DT	MOUNT CHEAHA_2 AL	341.2	APP	USERRECORD-01

Total scenarios = 2

Result key: 3
 Scenario 1 Affected station 2
 Before Analysis

Results for: 7A FL PANAMA CITY BDTV 0353 LIC
 HAAT 244.0 m, ATV ERP 52.0 kW

	POPULATION	AREA (sq km)
within Noise Limited Contour	375293	25990.1
not affected by terrain losses	374076	25913.9
lost to NTSC IX	0	0.0
lost to additional IX by ATV	1424	56.1
lost to ATV IX only	1424	56.1
lost to all IX	1424	56.1

Potential Interfering Stations Included in above Scenario 1

7A AL MOUNT CHEAHA	BDTV	0054	LIC
7A FL JACKSONVILLE	BDTV	0313	LIC
7A GA COCHRAN	BDTV	0405	LIC

After Analysis

Results for: 7A FL PANAMA CITY BDTV 0353 LIC
 HAAT 244.0 m, ATV ERP 52.0 kW

	POPULATION	AREA (sq km)
--	------------	--------------

within Noise Limited Contour	375293	25990.1
not affected by terrain losses	374076	25913.9
lost to NTSC IX	0	0.0
lost to additional IX by ATV	1455	60.2
lost to ATV IX only	1455	60.2
lost to all IX	1455	60.2

Potential Interfering Stations Included in above Scenario 1

7A AL MOUNT CHEAHA	BDTV	0054	LIC
7A FL JACKSONVILLE	BDTV	0313	LIC
7A GA COCHRAN	BDTV	0405	LIC
7A AL MOUNT CHEAHA_2	USERRECORD01		APP
*Percent Service lost without proposal:	0.0	to BDTV	0353
*Percent Service lost with proposal:	0.0	to BDTV	0353

Result key: 4
 Scenario 2 Affected station 2
 Before Analysis

Results for: 7A FL PANAMA CITY BDTV 0353 LIC

HAAT 244.0 m, ATV ERP 52.0 kW		
	POPULATION	AREA (sq km)
within Noise Limited Contour	375293	25990.1
not affected by terrain losses	374076	25913.9
lost to NTSC IX	0	0.0
lost to additional IX by ATV	1424	56.1
lost to ATV IX only	1424	56.1
lost to all IX	1424	56.1

Potential Interfering Stations Included in above Scenario 2

7A AL MOUNT CHEAHA	BDTV	0054	LIC
7A FL JACKSONVILLE	BDTV	0313	LIC
7A GA COCHRAN	BDTV	0405	LIC

After Analysis

Results for: 7A FL PANAMA CITY BDTV 0353 LIC

HAAT 244.0 m, ATV ERP 52.0 kW		
	POPULATION	AREA (sq km)
within Noise Limited Contour	375293	25990.1
not affected by terrain losses	374076	25913.9
lost to NTSC IX	0	0.0
lost to additional IX by ATV	1455	60.2
lost to ATV IX only	1455	60.2
lost to all IX	1455	60.2

Potential Interfering Stations Included in above Scenario 2

7A AL MOUNT CHEAHA	BDTV	0054	LIC
7A FL JACKSONVILLE	BDTV	0313	LIC
7A GA COCHRAN	BDTV	0405	LIC
7A AL MOUNT CHEAHA_2	USERRECORD01		APP
*Percent Service lost without proposal:	0.0	to BDTV	0353
*Percent Service lost with proposal:	0.0	to BDTV	0353

#####

Analysis of Interference to Affected Station 3

Analysis of current record

Channel	Call	City/State	Application	Ref. No.
07	WDCO-TV	COCHRAN GA	BDTV	-0405

Stations Potentially Affecting This Station

Chan	Call	City/State	Dist(km)	Status	Application	Ref. No.
07	WCIQ	MOUNT CHEAHA AL	263.6	LIC	BDTV	-0054
07	WJCT	JACKSONVILLE FL	291.1	LIC	BDTV	-0313
07	WJHG-TV	PANAMA CITY FL	305.2	LIC	BDTV	-0353
07	WITV	CHARLESTON SC	336.4	LIC	BDTV	-1385
07	WSPA-TV	SPARTANBURG SC	313.1	LIC	BDTV	-1413
07	WMAK	KNOXVILLE TN	398.4	LIC	BDTV	-1459
08	WGTW	ATHENS GA	170.0	LIC	BDTV	-0386
08	WACS-TV	DAWSON GA	135.8	LIC	BDTV	-0413
08	WXGA-TV	WAYCROSS GA	152.9	LIC	BDTV	-0429
07	WCIQ-DT	MOUNT CHEAHA_2 AL	263.5	APP	USERRECORD-01	

Total scenarios = 2

Result key: 5
Scenario 1 Affected station 3
Before Analysis

Results for: 7A GA COCHRAN BDTV 0405 LIC
HAAT 369.0 m, ATV ERP 22.0 kW

	POPULATION	AREA (sq km)
within Noise Limited Contour	802101	33928.1
not affected by terrain losses	798555	33501.3
lost to NTSC IX	0	0.0
lost to additional IX by ATV	13837	599.8
lost to ATV IX only	13837	599.8
lost to all IX	13837	599.8

Potential Interfering Stations Included in above Scenario 1

7A AL MOUNT CHEAHA	BDTV	0054	LIC
7A FL JACKSONVILLE	BDTV	0313	LIC
7A FL PANAMA CITY	BDTV	0353	LIC
7A SC CHARLESTON	BDTV	1385	LIC
7A SC SPARTANBURG	BDTV	1413	LIC
8A GA DAWSON	BDTV	0413	LIC

After Analysis

Results for: 7A GA COCHRAN BDTV 0405 LIC
HAAT 369.0 m, ATV ERP 22.0 kW

	POPULATION	AREA (sq km)
--	------------	--------------

within Noise Limited Contour	802101	33928.1
not affected by terrain losses	798555	33501.3
lost to NTSC IX	0	0.0
lost to additional IX by ATV	15287	756.8
lost to ATV IX only	15287	756.8
lost to all IX	15287	756.8

Potential Interfering Stations Included in above Scenario 1

7A AL MOUNT CHEAHA	BDTV	0054	LIC
7A FL JACKSONVILLE	BDTV	0313	LIC
7A FL PANAMA CITY	BDTV	0353	LIC
7A SC CHARLESTON	BDTV	1385	LIC
7A SC SPARTANBURG	BDTV	1413	LIC
8A GA DAWSON	BDTV	0413	LIC
7A AL MOUNT CHEAHA_2	USERRECORD01		APP
*Percent Service lost without proposal:	0.0	to BDTV	0405
*Percent Service lost with proposal:	0.2	to BDTV	0405

Result key: 6
 Scenario 2 Affected station 3
 Before Analysis

Results for: 7A GA COCHRAN BDTV 0405 LIC
 HAAT 369.0 m, ATV ERP 22.0 kW

	POPULATION	AREA (sq km)
within Noise Limited Contour	802101	33928.1
not affected by terrain losses	798555	33501.3
lost to NTSC IX	0	0.0
lost to additional IX by ATV	13837	599.8
lost to ATV IX only	13837	599.8
lost to all IX	13837	599.8

Potential Interfering Stations Included in above Scenario 2

7A AL MOUNT CHEAHA	BDTV	0054	LIC
7A FL JACKSONVILLE	BDTV	0313	LIC
7A FL PANAMA CITY	BDTV	0353	LIC
7A SC CHARLESTON	BDTV	1385	LIC
7A SC SPARTANBURG	BDTV	1413	LIC
8A GA DAWSON	BDTV	0413	LIC

After Analysis

Results for: 7A GA COCHRAN BDTV 0405 LIC
 HAAT 369.0 m, ATV ERP 22.0 kW

	POPULATION	AREA (sq km)
within Noise Limited Contour	802101	33928.1
not affected by terrain losses	798555	33501.3
lost to NTSC IX	0	0.0
lost to additional IX by ATV	15287	756.8
lost to ATV IX only	15287	756.8
lost to all IX	15287	756.8

Potential Interfering Stations Included in above Scenario 2

7A AL MOUNT CHEAHA	BDTV	0054	LIC	
7A FL JACKSONVILLE	BDTV	0313	LIC	
7A FL PANAMA CITY	BDTV	0353	LIC	
7A SC CHARLESTON	BDTV	1385	LIC	
7A SC SPARTANBURG	BDTV	1413	LIC	
8A GA DAWSON	BDTV	0413	LIC	
7A AL MOUNT CHEAHA_2	USERRECORD01		APP	
*Percent Service lost without proposal:	0.0	to BDTV		0405
*Percent Service lost with proposal:	0.2	to BDTV		0405

#####

Analysis of Interference to Affected Station 4

Analysis of current record

Channel	Call	City/State	Application	Ref. No.
07	WSPA-TV	SPARTANBURG SC	BDTV	-1413

Stations Potentially Affecting This Station

Chan	Call	City/State	Dist(km)	Status	Application	Ref. No.
07	WCIQ	MOUNT CHEAHA AL	373.3	LIC	BDTV	-0054
07	WDCO-TV	COCHRAN GA	313.1	LIC	BDTV	-0405
07	WLJC-TV	BEATTYVILLE KY	298.3	LIC	BDTV	-0633
07	WITV	CHARLESTON SC	345.3	LIC	BDTV	-1385
07	WMAK	KNOXVILLE TN	175.3	LIC	BDTV	-1459
08	WGTV	ATHENS GA	227.7	LIC	BDTV	-0386
08	WOLO-TV	COLUMBIA SC	182.2	LIC	BDTV	-1391
07	WCIQ-DT	MOUNT CHEAHA_2 AL	373.3	APP	USERRECORD-01	

Total scenarios = 2

Result key: 7
Scenario 1 Affected station 4
Before Analysis

Results for: 7A SC SPARTANBURG BDTV 1413 LIC
HAAT 657.0 m, ATV ERP 20.5 kW

	POPULATION	AREA (sq km)
within Noise Limited Contour	2870685	44575.1
not affected by terrain losses	2756732	41256.5
lost to NTSC IX	0	0.0
lost to additional IX by ATV	11074	612.5
lost to ATV IX only	11074	612.5
lost to all IX	11074	612.5

Potential Interfering Stations Included in above Scenario 1

7A AL MOUNT CHEAHA	BDTV	0054	LIC
7A GA COCHRAN	BDTV	0405	LIC
7A KY BEATTYVILLE	BDTV	0633	LIC
7A SC CHARLESTON	BDTV	1385	LIC
7A TN KNOXVILLE	BDTV	1459	LIC

8A SC COLUMBIA	BDTV	1391	LIC
----------------	------	------	-----

After Analysis

Results for:	7A SC SPARTANBURG	BDTV	1413	LIC
	HAAT 657.0 m, ATV ERP 20.5 kW			

	POPULATION	AREA (sq km)
within Noise Limited Contour	2870685	44575.1
not affected by terrain losses	2756732	41256.5
lost to NTSC IX	0	0.0
lost to additional IX by ATV	11100	616.5
lost to ATV IX only	11100	616.5
lost to all IX	11100	616.5

Potential Interfering Stations Included in above Scenario 1

7A AL MOUNT CHEAHA	BDTV	0054	LIC
7A GA COCHRAN	BDTV	0405	LIC
7A KY BEATTYVILLE	BDTV	0633	LIC
7A SC CHARLESTON	BDTV	1385	LIC
7A TN KNOXVILLE	BDTV	1459	LIC
8A SC COLUMBIA	BDTV	1391	LIC
7A AL MOUNT CHEAHA_2	USERRECORD01		APP
*Percent Service lost without proposal:	0.0	to BDTV	1413
*Percent Service lost with proposal:	0.0	to BDTV	1413

Result key: 8
 Scenario 2 Affected station 4
 Before Analysis

Results for:	7A SC SPARTANBURG	BDTV	1413	LIC
	HAAT 657.0 m, ATV ERP 20.5 kW			

	POPULATION	AREA (sq km)
within Noise Limited Contour	2870685	44575.1
not affected by terrain losses	2756732	41256.5
lost to NTSC IX	0	0.0
lost to additional IX by ATV	11074	612.5
lost to ATV IX only	11074	612.5
lost to all IX	11074	612.5

Potential Interfering Stations Included in above Scenario 2

7A AL MOUNT CHEAHA	BDTV	0054	LIC
7A GA COCHRAN	BDTV	0405	LIC
7A KY BEATTYVILLE	BDTV	0633	LIC
7A SC CHARLESTON	BDTV	1385	LIC
7A TN KNOXVILLE	BDTV	1459	LIC
8A SC COLUMBIA	BDTV	1391	LIC

After Analysis

Results for:	7A SC SPARTANBURG	BDTV	1413	LIC
	HAAT 657.0 m, ATV ERP 20.5 kW			

	POPULATION	AREA (sq km)
within Noise Limited Contour	2870685	44575.1
not affected by terrain losses	2756732	41256.5

lost to NTSC IX	0	0.0
lost to additional IX by ATV	11100	616.5
lost to ATV IX only	11100	616.5
lost to all IX	11100	616.5

Potential Interfering Stations Included in above Scenario 2

7A AL MOUNT CHEAHA	BDTV	0054	LIC
7A GA COCHRAN	BDTV	0405	LIC
7A KY BEATTYVILLE	BDTV	0633	LIC
7A SC CHARLESTON	BDTV	1385	LIC
7A TN KNOXVILLE	BDTV	1459	LIC
8A SC COLUMBIA	BDTV	1391	LIC
7A AL MOUNT CHEAHA_2	USERRECORD01		APP
*Percent Service lost without proposal:	0.0	to BDTV	1413
*Percent Service lost with proposal:	0.0	to BDTV	1413

#####

Analysis of Interference to Affected Station 5

Analysis of current record

Channel	Call	City/State	Application	Ref. No.
07	WMAK	KNOXVILLE TN	BDTV	-1459

Stations Potentially Affecting This Station

Chan	Call	City/State	Dist(km)	Status	Application	Ref. No.
07	WCIQ	MOUNT CHEAHA AL	328.8	LIC	BDTV	-0054
07	WDCO-TV	COCHRAN GA	398.4	LIC	BDTV	-0405
07	WEHT	EVANSVILLE IN	383.2	LIC	BDTV	-0568
07	WLJC-TV	BEATTYVILLE KY	179.7	LIC	BDTV	-0633
07	WSPA-TV	SPARTANBURG SC	175.3	LIC	BDTV	-1413
07	WCIQ-DT	MOUNT CHEAHA_2 AL	328.8	APP	USERRECORD-01	

Total scenarios = 2

Result key: 9
 Scenario 1 Affected station 5
 Before Analysis

Results for: 7A TN KNOXVILLE BDTV 1459 LIC
 HAAT 382.0 m, ATV ERP 55.0 kW

	POPULATION	AREA (sq km)
within Noise Limited Contour	1504930	35897.3
not affected by terrain losses	1310560	29002.1
lost to NTSC IX	0	0.0
lost to additional IX by ATV	35024	1325.2
lost to ATV IX only	35024	1325.2
lost to all IX	35024	1325.2

Potential Interfering Stations Included in above Scenario 1

7A AL MOUNT CHEAHA	BDTV	0054	LIC
7A GA COCHRAN	BDTV	0405	LIC
7A IN EVANSVILLE	BDTV	0568	LIC
7A KY BEATTYVILLE	BDTV	0633	LIC
7A SC SPARTANBURG	BDTV	1413	LIC

After Analysis

Results for:	7A TN KNOXVILLE	BDTV	1459	LIC
HAAT	382.0 m, ATV ERP	55.0 kW		
		POPULATION	AREA (sq km)	
within Noise Limited Contour		1504930	35897.3	
not affected by terrain losses		1310560	29002.1	
lost to NTSC IX		0	0.0	
lost to additional IX by ATV		35312	1345.3	
lost to ATV IX only		35312	1345.3	
lost to all IX		35312	1345.3	

Potential Interfering Stations Included in above Scenario 1

7A AL MOUNT CHEAHA	BDTV	0054	LIC
7A GA COCHRAN	BDTV	0405	LIC
7A IN EVANSVILLE	BDTV	0568	LIC
7A KY BEATTYVILLE	BDTV	0633	LIC
7A SC SPARTANBURG	BDTV	1413	LIC
7A AL MOUNT CHEAHA_2	USERRECORD01		APP
*Percent Service lost without proposal:		0.0	to BDTV 1459
*Percent Service lost with proposal:		0.0	to BDTV 1459

Result key: 10
 Scenario 2 Affected station 5
 Before Analysis

Results for:	7A TN KNOXVILLE	BDTV	1459	LIC
HAAT	382.0 m, ATV ERP	55.0 kW		
		POPULATION	AREA (sq km)	
within Noise Limited Contour		1504930	35897.3	
not affected by terrain losses		1310560	29002.1	
lost to NTSC IX		0	0.0	
lost to additional IX by ATV		35024	1325.2	
lost to ATV IX only		35024	1325.2	
lost to all IX		35024	1325.2	

Potential Interfering Stations Included in above Scenario 2

7A AL MOUNT CHEAHA	BDTV	0054	LIC
7A GA COCHRAN	BDTV	0405	LIC
7A IN EVANSVILLE	BDTV	0568	LIC
7A KY BEATTYVILLE	BDTV	0633	LIC
7A SC SPARTANBURG	BDTV	1413	LIC

After Analysis

Results for:	7A TN KNOXVILLE	BDTV	1459	LIC
HAAT	382.0 m, ATV ERP	55.0 kW		
		POPULATION	AREA (sq km)	

within Noise Limited Contour	1504930	35897.3
not affected by terrain losses	1310560	29002.1
lost to NTSC IX	0	0.0
lost to additional IX by ATV	35312	1345.3
lost to ATV IX only	35312	1345.3
lost to all IX	35312	1345.3

Potential Interfering Stations Included in above Scenario 2

7A AL MOUNT CHEAHA	BDTV	0054	LIC
7A GA COCHRAN	BDTV	0405	LIC
7A IN EVANSVILLE	BDTV	0568	LIC
7A KY BEATTYVILLE	BDTV	0633	LIC
7A SC SPARTANBURG	BDTV	1413	LIC
7A AL MOUNT CHEAHA_2	USERRECORD01		APP
*Percent Service lost without proposal:	0.0	to BDTV	1459
*Percent Service lost with proposal:	0.0	to BDTV	1459

#####

Analysis of Interference to Affected Station 6

Analysis of current record

Channel	Call	City/State	Application	Ref. No.
08	WGTV	ATHENS GA	BDTV	-0386

Stations Potentially Affecting This Station

Chan	Call	City/State	Dist(km)	Status	Application	Ref. No.
07	WCIQ	MOUNT CHEAHA AL	158.1	LIC	BDTV	-0054
07	WDCO-TV	COCHRAN GA	170.0	LIC	BDTV	-0405
07	WSPA-TV	SPARTANBURG SC	227.7	LIC	BDTV	-1413
08	WACS-TV	DAWSON GA	211.1	LIC	BDTV	-0413
08	WXGA-TV	WAYCROSS GA	322.7	LIC	BDTV	-0429
08	WOLO-TV	COLUMBIA SC	313.5	LIC	BDTV	-1391
08	WNPT	NASHVILLE TN	349.3	LIC	BDTV	-1478
09	WJSU-TV	ANNISTON AL	211.3	LIC	BDTV	-0019
09	WTVM	COLUMBUS GA	175.0	LIC	BDTV	-0406
09	WNTV	GREENVILLE SC	203.1	LIC	BDTV	-1403
09	WTVG	CHATTANOOGA TN	185.1	LIC	BDTV	-1443
07	WCIQ-DT	MOUNT CHEAHA_2 AL	158.1	APP	USERRECORD-01	

Total scenarios = 2

Result key: 11
 Scenario 1 Affected station 6
 Before Analysis

Results for:	8A GA ATHENS	BDTV	0386	LIC
HAAT	326.0 m, ATV ERP	15.9 kW		
	POPULATION	AREA (sq km)		
within Noise Limited Contour	4693464	30083.8		
not affected by terrain losses	4651135	28846.7		

lost to NTSC IX	0	0.0
lost to additional IX by ATV	19113	759.1
lost to ATV IX only	19113	759.1
lost to all IX	19113	759.1

Potential Interfering Stations Included in above Scenario 1

7A AL MOUNT CHEAHA	BDTV	0054	LIC
8A GA DAWSON	BDTV	0413	LIC
8A GA WAYCROSS	BDTV	0429	LIC
8A SC COLUMBIA	BDTV	1391	LIC
8A TN NASHVILLE	BDTV	1478	LIC

After Analysis

Results for: 8A GA ATHENS BDTV 0386 LIC
 HAAT 326.0 m, ATV ERP 15.9 kW

	POPULATION	AREA (sq km)
within Noise Limited Contour	4693464	30083.8
not affected by terrain losses	4651135	28846.7
lost to NTSC IX	0	0.0
lost to additional IX by ATV	21486	779.2
lost to ATV IX only	21486	779.2
lost to all IX	21486	779.2

Potential Interfering Stations Included in above Scenario 1

7A AL MOUNT CHEAHA	BDTV	0054	LIC
8A GA DAWSON	BDTV	0413	LIC
8A GA WAYCROSS	BDTV	0429	LIC
8A SC COLUMBIA	BDTV	1391	LIC
8A TN NASHVILLE	BDTV	1478	LIC
7A AL MOUNT CHEAHA_2	USERRECORD01		APP
*Percent Service lost without proposal:	0.0	to BDTV	0386
*Percent Service lost with proposal:	0.1	to BDTV	0386

Result key: 12
 Scenario 2 Affected station 6
 Before Analysis

Results for: 8A GA ATHENS BDTV 0386 LIC
 HAAT 326.0 m, ATV ERP 15.9 kW

	POPULATION	AREA (sq km)
within Noise Limited Contour	4693464	30083.8
not affected by terrain losses	4651135	28846.7
lost to NTSC IX	0	0.0
lost to additional IX by ATV	19113	759.1
lost to ATV IX only	19113	759.1
lost to all IX	19113	759.1

Potential Interfering Stations Included in above Scenario 2

7A AL MOUNT CHEAHA	BDTV	0054	LIC
8A GA DAWSON	BDTV	0413	LIC
8A GA WAYCROSS	BDTV	0429	LIC
8A SC COLUMBIA	BDTV	1391	LIC

8A TN NASHVILLE BDTV 1478 LIC

After Analysis

Results for: 8A GA ATHENS BDTV 0386 LIC
 HAAT 326.0 m, ATV ERP 15.9 kW

	POPULATION	AREA (sq km)
within Noise Limited Contour	4693464	30083.8
not affected by terrain losses	4651135	28846.7
lost to NTSC IX	0	0.0
lost to additional IX by ATV	21486	779.2
lost to ATV IX only	21486	779.2
lost to all IX	21486	779.2

Potential Interfering Stations Included in above Scenario 2

7A AL MOUNT CHEAHA	BDTV	0054	LIC
8A GA DAWSON	BDTV	0413	LIC
8A GA WAYCROSS	BDTV	0429	LIC
8A SC COLUMBIA	BDTV	1391	LIC
8A TN NASHVILLE	BDTV	1478	LIC
7A AL MOUNT CHEAHA_2	USERRECORD01		APP
*Percent Service lost without proposal:	0.0	to BDTV	0386
*Percent Service lost with proposal:	0.1	to BDTV	0386

#####

Analysis of Interference to Affected Station 7

Analysis of current record

Channel	Call	City/State	Application	Ref. No.
08	WACS-TV	DAWSON GA	BDTV	-0413

Stations Potentially Affecting This Station

Chan	Call	City/State	Dist(km)	Status	Application	Ref. No.
07	WCIQ	MOUNT CHEAHA AL	208.3	LIC	BDTV	-0054
07	WJHG-TV	PANAMA CITY FL	186.1	LIC	BDTV	-0353
07	WDCO-TV	COCHRAN GA	135.8	LIC	BDTV	-0405
08	WGTW	ATHENS GA	211.1	LIC	BDTV	-0386
08	WXGA-TV	WAYCROSS GA	203.8	LIC	BDTV	-0429
08	WOLO-TV	COLUMBIA SC	428.2	LIC	BDTV	-1391
09	WPGX	PANAMA CITY FL	195.1	LIC	BDTV	-0354
09	WTVM	COLUMBUS GA	47.9	LIC	BDTV	-0406
07	WCIQ-DT	MOUNT CHEAHA_2 AL	208.2	APP	USERRECORD-01	

Proposal causes no interference

#####

Analysis of Interference to Affected Station 8

Analysis of current record

Channel	Call	City/State	Application Ref. No.
07	WCIQ-DT	MOUNT CHEAHA_2 AL	USERRECORD-01

Stations Potentially Affecting This Station

Chan	Call	City/State	Dist(km)	Status	Application Ref. No.
07	WCIQ	MOUNT CHEAHA AL	0.0	LIC	BDTV -0054
07	WJHG-TV	PANAMA CITY FL	341.2	LIC	BDTV -0353
07	WDCO-TV	COCHRAN GA	263.5	LIC	BDTV -0405
07	WSPA-TV	SPARTANBURG SC	373.3	LIC	BDTV -1413
07	WMAK	KNOXVILLE TN	328.8	LIC	BDTV -1459
08	WGTV	ATHENS GA	158.1	LIC	BDTV -0386
08	WACS-TV	DAWSON GA	208.2	LIC	BDTV -0413

Total scenarios = 1

Result key: 13
Scenario 1 Affected station 8
Before Analysis

Results for: 7A AL MOUNT CHEAHA_2 USERRECORD01 APP
HAAT 576.0 m, ATV ERP 34.8 kW

	POPULATION	AREA (sq km)
within Noise Limited Contour	2712108	47271.9
not affected by terrain losses	2604495	45237.3
lost to NTSC IX	0	0.0
lost to additional IX by ATV	2184647	37787.7
lost to ATV IX only	2184647	37787.7
lost to all IX	2184647	37787.7

Potential Interfering Stations Included in above Scenario 1

7A AL MOUNT CHEAHA	BDTV	0054	LIC
7A FL PANAMA CITY	BDTV	0353	LIC
7A GA COCHRAN	BDTV	0405	LIC
7A SC SPARTANBURG	BDTV	1413	LIC
7A TN KNOXVILLE	BDTV	1459	LIC
8A GA ATHENS	BDTV	0386	LIC

#####

FINISHED FINISHED FINISHED FINISHED FINISHED FINISHED