

**Exhibit 12.1 - Copy of Existing
Antenna Structure Registration****Registration Detail**

Reg Number	1054180	Status	Constructed
File Number	A0063703	Constructed	04/06/1995
FAA Study	95-ASO-0099-OE	EMI	No
FAA Issue Date	03/07/1995	NEPA	No

Antenna Structure

Structure Type TOWER - Free standing or Guyed Structure used for Communications Purposes

Location (in NAD83 Coordinates)

Lat/Long	32-52-15.0 N 083-41-33.0 W	401 CHARTER BLVD
City, State	MACON , GA	
Center of AM Array		

Heights (meters)

Elevation of Site Above Mean Sea Level	Overall Height Above Ground (AGL)
170.7	106.7
Overall Height Above Mean Sea Level	Overall Height Above Ground w/o Appurtenances
277.4	100.6

Painting and Lighting Specifications

FAA Chapters 3, 4, 5, 13

Paint and Light in Accordance with FAA Circular Number 70/7460-1H

Owner & Contact Information

FRN	0004205951	Licensee ID	L00290141
-----	------------	-------------	-----------

Owner

SHEETS, LARRY M DBA = SHEETS COMMUNICATIONS	P: (912)929-0010
Attention To: LARRY SHEETS	E:
204 S DUGGER AVE	
ROBERTA , GA 31078	

Contact

P:
E:

Last Action Status

Status	Constructed	Received	07/13/1998
Purpose	New	Entered	07/15/1998
Mode	Mail In (Manual)		

Related Applications

07/13/1998 A0063703 - New (NE)

Comments**Comments**

08/04/1998 CORRECTED ORIGINALLY ISSUED FCC PARAGRAPHS FROM 1,3,11,21 BASED ON
SUBMITTED COPY OF FAA CLEARANCE WITH FAA CHAPTERS LISTED.

Automated Letters

Exhibit 12.2

Vertical Plan of Antenna System

The site is located at 401 Charter Blvd.,
the city of Macon, Bibb County, Georgia.

Site Location (NAD 27)

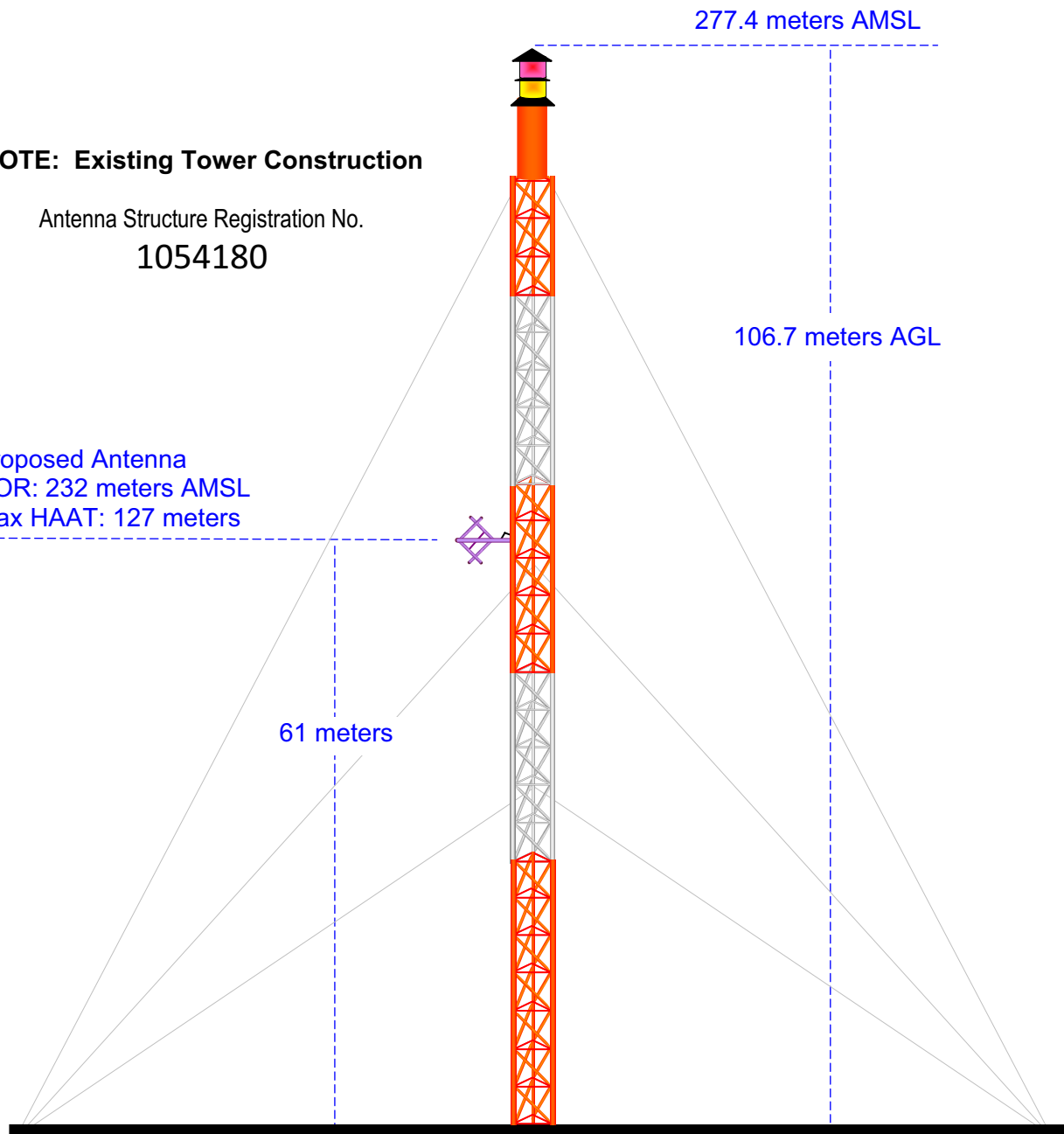
NL: 32° 52' 15"

WL: 83° 41' 33"

NOTE: Existing Tower Construction

Antenna Structure Registration No.
1054180

Proposed Antenna
COR: 232 meters AMSL
max HAAT: 127 meters



Ground Elevation = 170.7 m AMSL
Drawing is not to Scale

MUNN-REESE, INC.
Broadcast Engineering Consultants
Coldwater, MI 49036

Exhibit 12.3 Present & Proposed Service Contour Study

W282AE.P
ASR 1054180
Latitude: 32-52-15 N
Longitude: 083-41-33 W
ERP: 0.013 kW
Channel: 282
Frequency: 104.3 MHz
AMSL Height: 232.0 m
Horiz. Pattern: Omni
Vert. Pattern: No
Prop Model:

60 dBu Contour
Total Population: 70,012
Total Area: 133.32 sq. km

W282AE.L
BLFT19961021TC
Latitude: 32-50-31 N
Longitude: 083-40-19 W
ERP: 0.027 kW
Channel: 282
Frequency: 104.3 MHz
AMSL Height: 190.0 m
Horiz. Pattern: Omni
Vert. Pattern: No
Prop Model:

60 dBu Contour
Total Population: 81,077
Total Area: 124.09 sq. km

Proposed 60 dBu Contour

Present 60 dBu Contour

W282AE.P

Payne

W282AE.L

Macon

Bibb



MUNN-REESE, INC.
Broadcast Engineering Consultants
Coldwater, MI 49036
1(517)278-7339

Scale 1:115,000



Exhibit 12.4 Proposed vs. Primary Service Contour Study

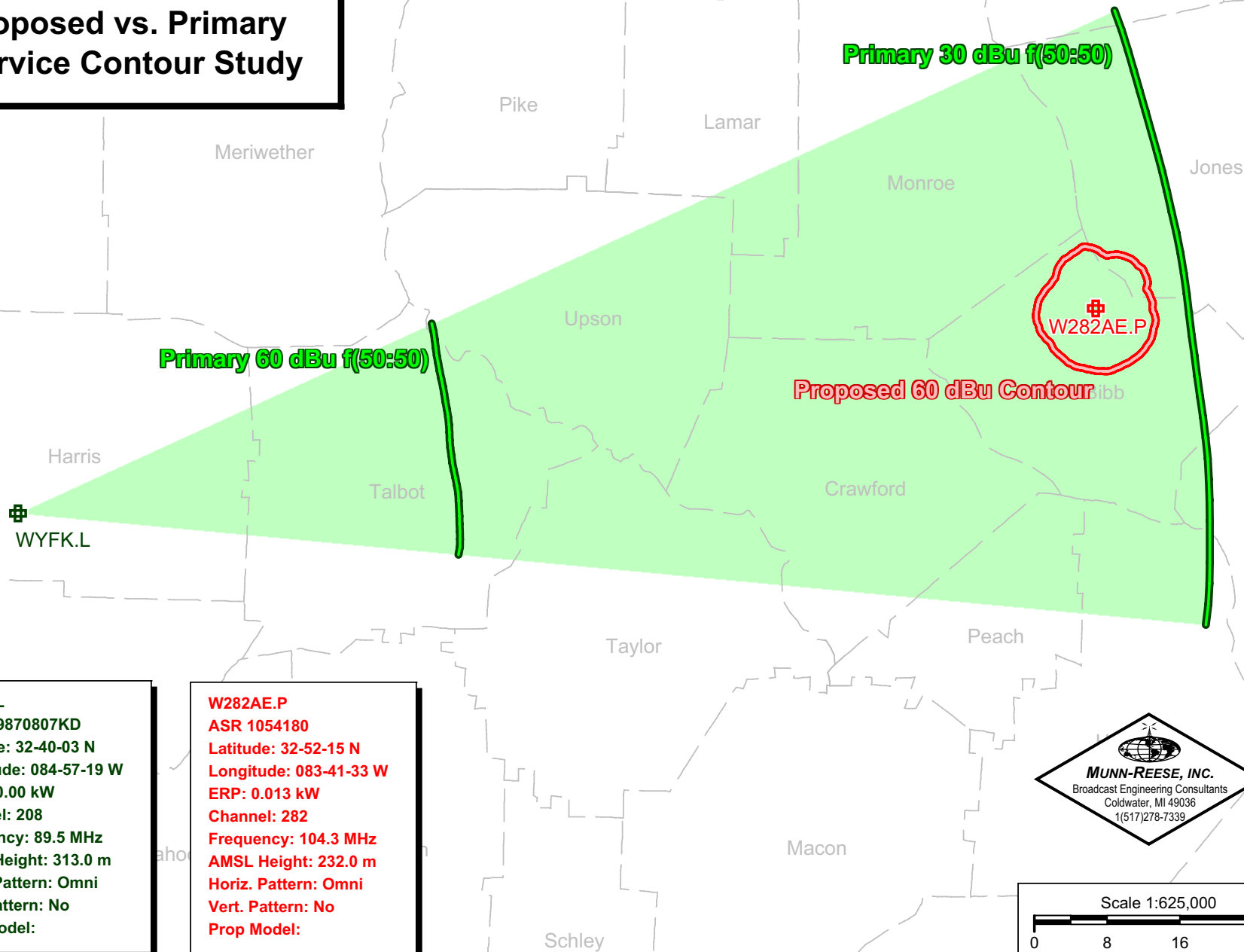


Exhibit 12.5

Tabulation of Proposed Allocation

Tabulations of contours will be supplied upon request.

Bible Broadcasting Network, Inc.

REFERENCE		CH# 282D - 104.3 MHz, Pwr= 0.013 kw, HAAT= 109.6 M, COR= 232 M								DISPLAY DATES	
32 52 15.0 N.		Average Protected F(50-50)= 6.41 km								DATA	01-10-09
83 41 33.0 W.		Omni-directional								SEARCH	01-15-09
CH	CALL	TYPE	ANT	AZI	DIST	LAT	PWR(kw)	INT(km)	PRO(km)	*IN*	*OUT*
CITY		STATE		--	FILE #	LNG	HAAT(M)	COR(M)	LICENSEE	(Overlap	in km)
282D	W282AE	LIC	_CN	149.1	3.7	32 50 31.0	0.027	19.7	5.9	-22.9*	-25.5*
Macon		GA		329.1	BLFT19961021TC	83 40 19.0	72	190	Bible Broadcasting Network		
Translator For WYFK, Columbus, GA											
282C0	AL9472	RSV	___	64.4	184.0	33 34 24.0	100.000	188.8	85.1	-11.3*<	77.6
Augusta		GA		245.3	RM10197	81 54 17.0	450	563			
Modified coordinates											
282C0	WBBQ-FM	LIC	_CX	62.7	182.7	33 36 41.0	100.000	175.5	74.6	0.8	86.7
Augusta		GA		243.7	BMLH20040618AAT	81 56 30.0	305	416	Capstar Tx Limited Partner		
281C0	WALR-FM	LIC	NCX	299.8	122.3	33 24 43.0	100.000	111.6	76.1	5.1	38.4
Greenville		GA		119.2	BLH20070314ABH	84 50 03.0	371	618	Cox Radio, Inc.		
279A	WVKX	CP	ZCX	95.9	34.0	32 50 19.5	4.680	2.6	27.3	24.9	6.4
Irwinton		GA		276.1	BPH20080317AGB	83 19 53.3	113	234	wilkinson Broadcasting, In		
281C1	AL2428	RSV	___	299.8	122.3	33 24 43.0	100.000	103.7	71.3	13.0	43.2
Greenville		GA		119.2	RM10813	84 50 03.0	299	554			
282L1	WFVS-LP	LIC	___	207.5	41.3	32 32 28.0	0.022	16.7	5.2	17.9	13.8
Fort Valley		GA		27.4	BLL20040929AMX	83 53 47.0	63	199	The Broadcasters Club		
279A	WVKX	LIC	_C_	88.6	47.5	32 52 48.0	6.000	2.6	26.6	38.6	20.6
Irwinton		GA		268.9	BLH19990315KC	83 11 07.0	100	200	wilkinson Broadcasting, In		
283C1	WKAK	LIC	_CY	191.4	149.5	31 32 57.0	100.000	105.1	72.4	37.7	67.7
Albany		GA		11.2	BLH19900424KC	84 00 19.0	299	373	Cumulus Licensing Llc		
284C1	WFSH-FM	LIC	_CX	353.5	111.2	33 52 02.0	24.000	8.1	73.1	96.4	37.9
Athens		GA		173.4	BMLH20060726APQ	83 49 44.0	505	772	South Texas Broadcasting,		
280C3	WQXZ	LIC	_CN	175.8	78.2	32 10 03.0	10.500	3.9	39.5	67.4	38.5
Hawkinsville		GA		355.8	BLH19960122KE	83 37 51.0	151	248	Georgia Eagle Broadcasting		
From Channel 280A Per D92-112											
285C2	WMCG	LIC	_C_	154.4	92.2	32 07 16.0	36.000	5.6	50.5	79.7	41.5
Milan		GA		334.6	BLH19940310KB	83 16 05.0	172	252	Tel-dodge Broadcasting Co.		
280A	WDDK	LIC	NCN	31.6	78.9	33 28 29.0	5.300	2.6	27.2	69.6	51.4
Greensboro		GA		211.9	BLH19981127KC	83 14 46.0	100	256	wyche Services Corporation		
Amended 980218											

Terrain database is NGDC 30 SEC , R= 73.215 qualifying spacings or FCC minimum Spacings in KM, M= Margin in KM
 Contour distances are on direct line to and from reference station. Reference zone = 2, Co to 3rd adjacent.
 Ant Column: (D= DA Standard, Z= DA 73.215, N= Not DA 73.215, _= Omni), Polarization (C,H,V,E), Beamtilt(Y,N,X)
 "*"affixed to 'IN' or 'OUT' values = site inside protected contour.