

**K269EE Appl.**

BLFT19920403TD

Latitude: 34-32-27 N

Longitude: 112-25-40 W

ERP: 0.25 kW

Channel: 269

Frequency: 101.7 MHz

AMSL Height: 1935.0 m

Elevation: 1917.0 m

Horiz. Pattern: Omni

Vert. Pattern: No

Prop Model: FCC Model

Loc. Variability: 50.0%

Time Variability: 50.0%

HAAT Mthd: FCC

**KNRJ**

Cordes Lakes, AZ

BLH20120321AET

Latitude: 34-13-47 N

Longitude: 112-21-03 W

ERP: 40.00 kW

Channel: 266

Frequency: 101.1 MHz

AMSL Height: 2323.0 m

Elevation: 2271.0 m

Horiz. Pattern: Omni

Vert. Pattern: No

Prop Model: FCC Model

Loc. Variability: 50.0%

Time Variability: 50.0%

HAAT Mthd: FCC

**EXHIBIT 13-C SECTION 73.1204 Contour Protection - KNRJ**

The KNRJ FCC F(50,50) contour at K269EE is 79.8 dBu.

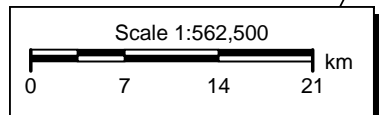
Therefore the K269EE F(50,10) interfering contour with respect to KNRJ is 119.8 dBu, which extends 113 meters from the tower.

The nearest occupied building is 290 meters (951 ft.) from the K269EE transmit site.

**KAHM FCC F(50,50) 79.8 dBu contour**

Yavapai

Prescott

**K269EE Appl.**+  
KNRJ**HORIZON**  
BROADCAST SOLUTIONS

V-Soft Communications LLC ©

## Screen 3 - Results

### Results of Calculation

**Distance to Contour = 0.113 kilometers**

[Back to Numeric Entries](#)

[Back to Initial Selections](#)

**Input Data** from Screens 1 and 2

ERP = 0.250 kW

HAAT = 197.0 meters

Field Strength = 119.8 dBu

**Distances** are in **meters and kilometers**

**Power** is in **kW (kilowatts)**

**Field Strength** is in **dBu**

**FM and NTSC TV Channels 2 through 6**

**F(50,10)** for interfering contours selected

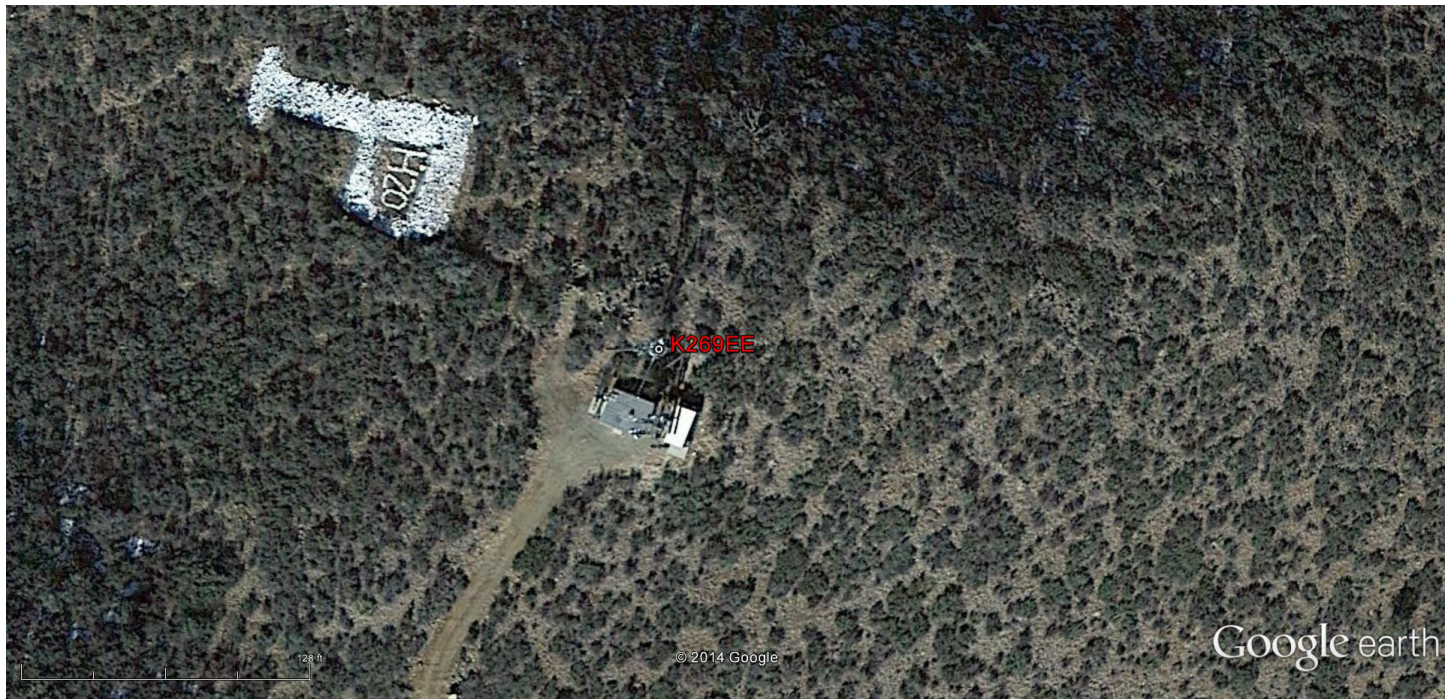
**Find Distance, given a Field Strength**



Google earth

feet  
meters





Google earth

feet | 300  
meters | 90

