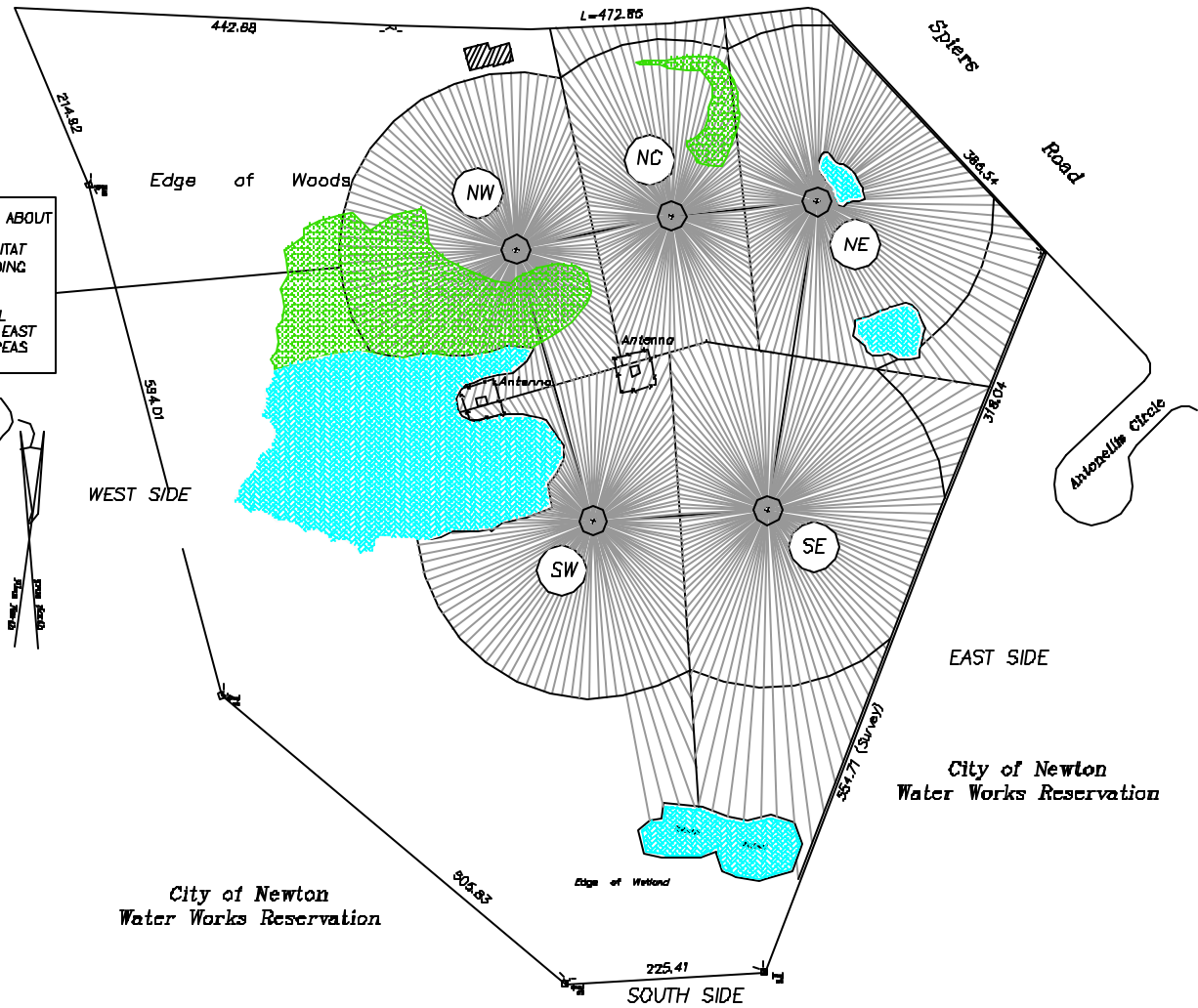
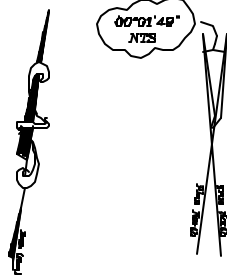


Saw Mill Brook Parkway



GROUND SYSTEM CONSISTS OF 120 RADIALS SPACED EVERY 3° ABOUT EACH TOWER BASE, 60 METERS IN LENGTH EXCEPT AS FOLLOWS: RADIALS CANNOT INTRUDE ON VERNAL POOLS OR VERNAL POOL HABITAT AND ARE TERMINATED AT A PERIMETER 2" COPPER STRIP SURROUNDING EACH POOL AS SHOWN.

TO COMPENSATE FOR LOSS OF GROUND SYSTEM DUE TO VERNAL POOL PROTECTION—RADIALS ARE EXTENDED TO PROPERTY LINES ON EAST AND NORTH SIDES AS SHOWN. RADIALS EXTENDING INTO WOODED AREAS ARE TO BE LAID WITH MINIMUM DISRUPTION TO VEGETATION.



HATFIELD & DAWSON
CONSULTING ENGINEERS

EXHIBIT 10-1
ANTENNA SITE PLAT DIAGRAM
WUNR(AM) 1600kHz BROOKLINE, MA 12/2001

7.5 X 15 MINUTE SERIES (TOPOGRAPHIC)

311 17' 30"

312

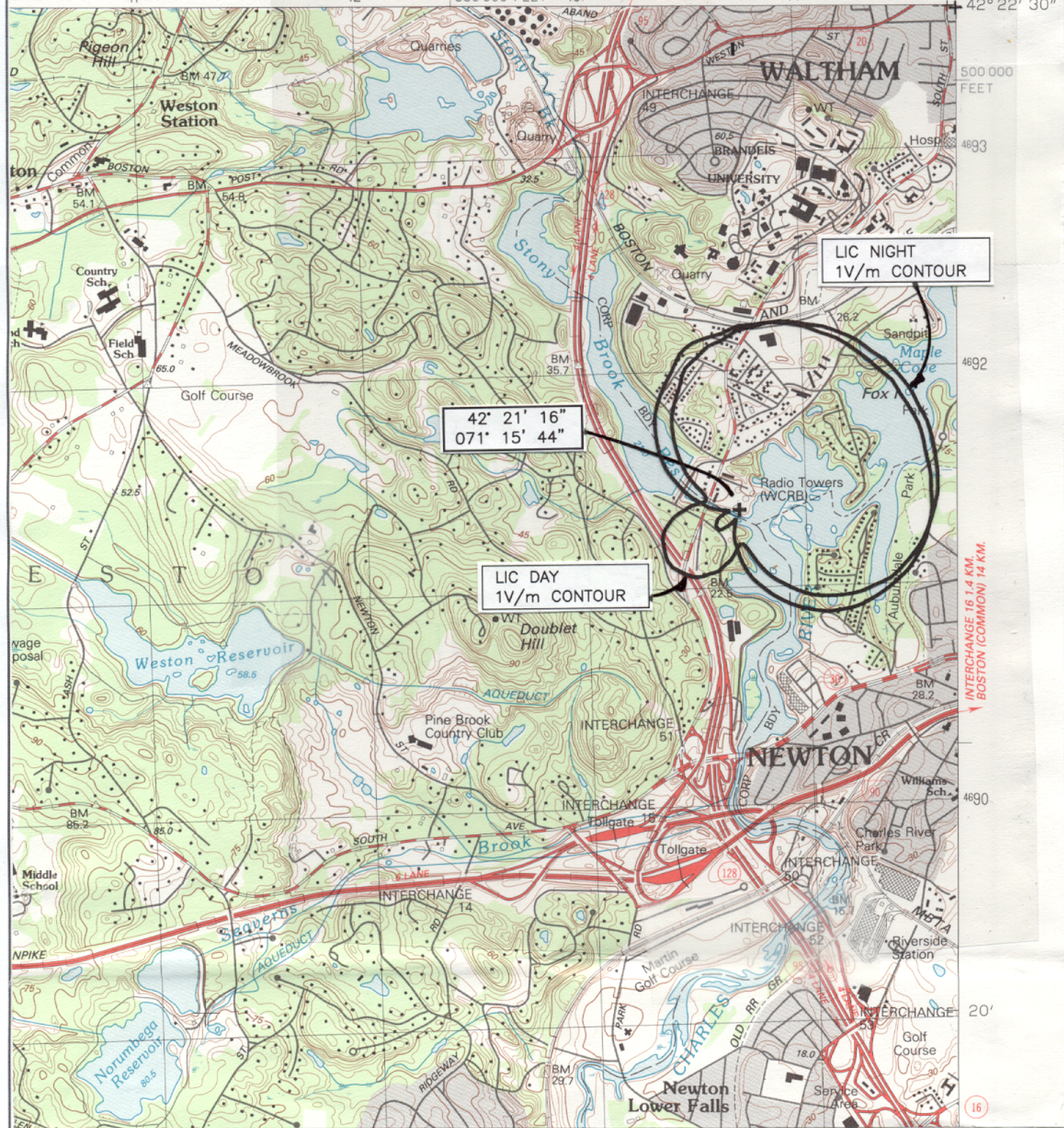
660 000 FEET 313

5.8 KM. TO MASS. 2

314

71° 15'

42° 22' 30"



FRAMINGHAM
QUADRANGLE
MASSACHUSETTS
7.5 MINUTE TOPOGRAPHIC

0 MILES

SCALE 1:25 000

1

2

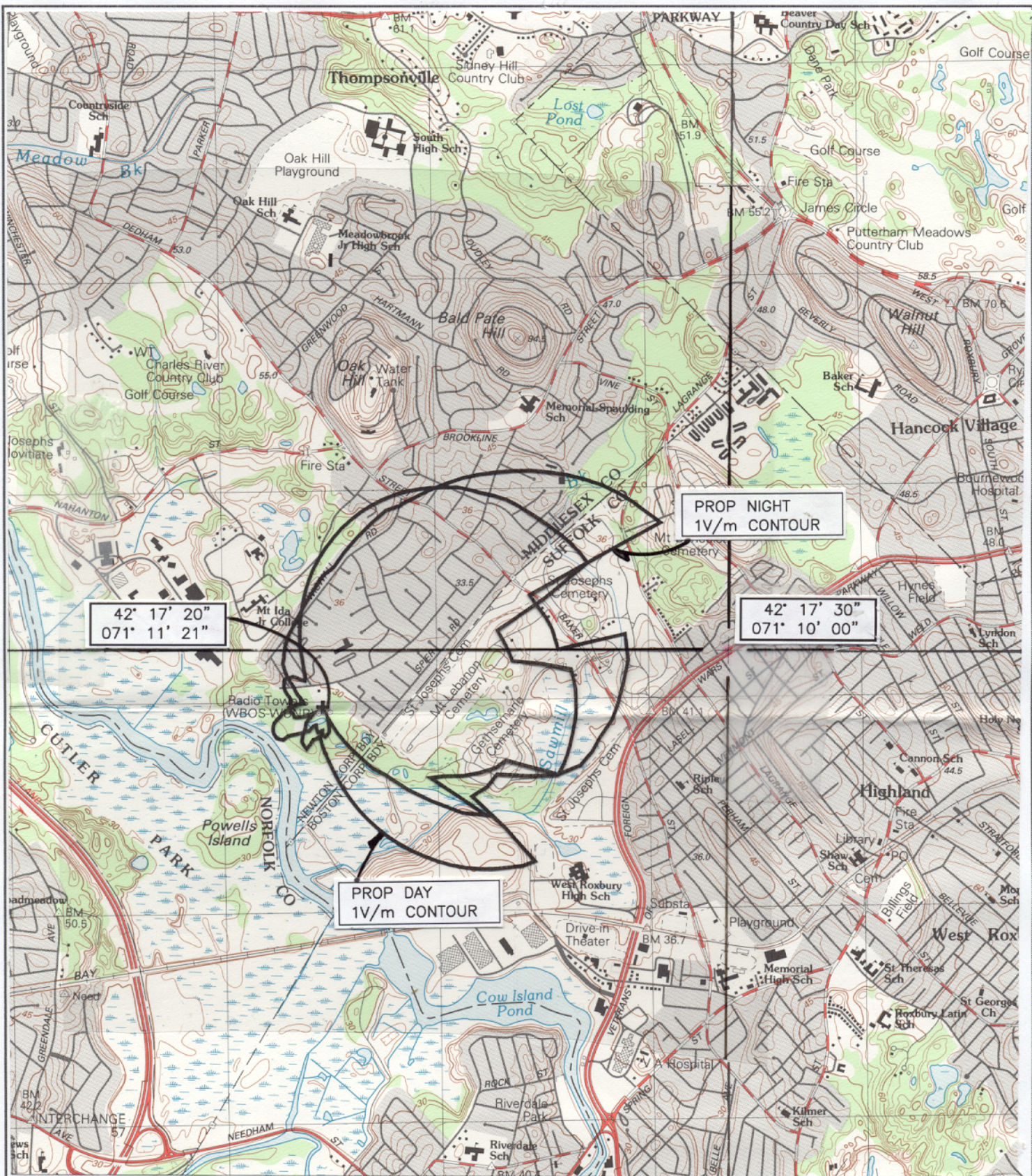
0 KILOMETERS

1

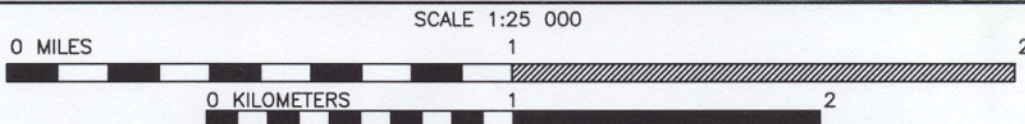
2

HATFIELD & DAWSON
CONSULTING ENGINEERS

EXHIBIT 10-2
TRANSMITTER SITE MAP & LICENSED 1V/m CONTOUR(S)
WRCA(AM) 1330 kHz WATERTOWN, MA 7/2002



BOSTON SOUTH
QUADRANGLE
MASSACHUSETTS
7.5 MINUTE TOPOGRAPHIC



HATFIELD & DAWSON
CONSULTING ENGINEERS

EXHIBIT 10-2
TRANSMITTER SITE MAP & PROPOSED 1V/m CONTOURS
WRCA(AM) 1330 kHz WATERTOWN, MA 7/2002



**HATFIELD & DAWSON
CONSULTING ENGINEERS**

EXHIBIT 10-3
TRANSMITTER SITE PHOTO

WUNR(AM)

Brookline, MA

December, 2001