

Exhibit 21 Page 1
Shofar Broadcasting Corporation
NCE FM Interference Area to TV 6
Charleston, West Virginia

The purpose of this exhibit is to show compliance with §73.525 of the Commission's Rules. The Rules require that an applicant proposing operation on FM Channel 215, whose antenna location is less than 180 kilometers from an authorized television Channel 6 facility, furnish a map and an engineering statement, with calculations, demonstrating compliance with the Rules with regard to interference to the reception of authorized television channel 6 stations. There is one affected TV 6 station.

1. WDTV - 131 km distant

Therefore, the above station must receive consideration.

First, the relative HAAT figures were generated for the station using the NGDC 30 Second Database and the data from the FCC TV Database. The distances to the contours were predicted according to the procedures specified in §73.684 of the Commission's Rules, "Prediction of Coverage," using the F(50,50) curves in Figure 9 of §73.699.

For each television channel 6 field strength contour, the associated F(50,10) FM interference contour was obtained from Figure 1 of §73.599. The distances to the applicable NCE-FM interference contours were predicted according to the procedures specified in "Prediction of Coverage," using the F(50,10) curves in Figure 1 of §73.333 of the Rules. Radials were then computed every 5 degrees from the proposed NCE-FM site to the point at which interference stops occurring.

Exhibit 21 Page 2
Shofar Broadcasting Corporation
NCE FM Interference Area to TV 6
Charleston, West Virginia

A table of the proposed NCE-FM F(50,10) interfering contours to the television channel 6 F(50,50) protected contours may be seen as Table 1 of this exhibit. A map of the interference area appears as Figure 1 of this exhibit.

These calculations are based on the appropriate F(50,50), F(50,10) and FM/TV 6 protection ratio curves for an NCE-FM station operating with facilities of 4.0 kilowatts ERP at 190 meters HAAT. Free space calculations were used when computing the field strength for distances less than 1 mile.

The applicant chooses to use circular polarization and adjustments for vertical only polarization or receiving antenna directivity have not been utilized.

As can be seen there is no contour overlap with the TV 6 stations, therefore the application complies with the requirements of §73.525 concerning interference to TV 6.

Exhibit 21 Table 1
Shofar Broadcasting Corporation
NCE FM Interference to Television Channel 6
Charleston, West Virginia

| TV Contour dB | U/D Ratio dB | FM Contour |
|----------------------|---------------------|-------------------|
| 47.0 | 27.0 | 74.0 |

No Overlap with WDTV 47 dBu

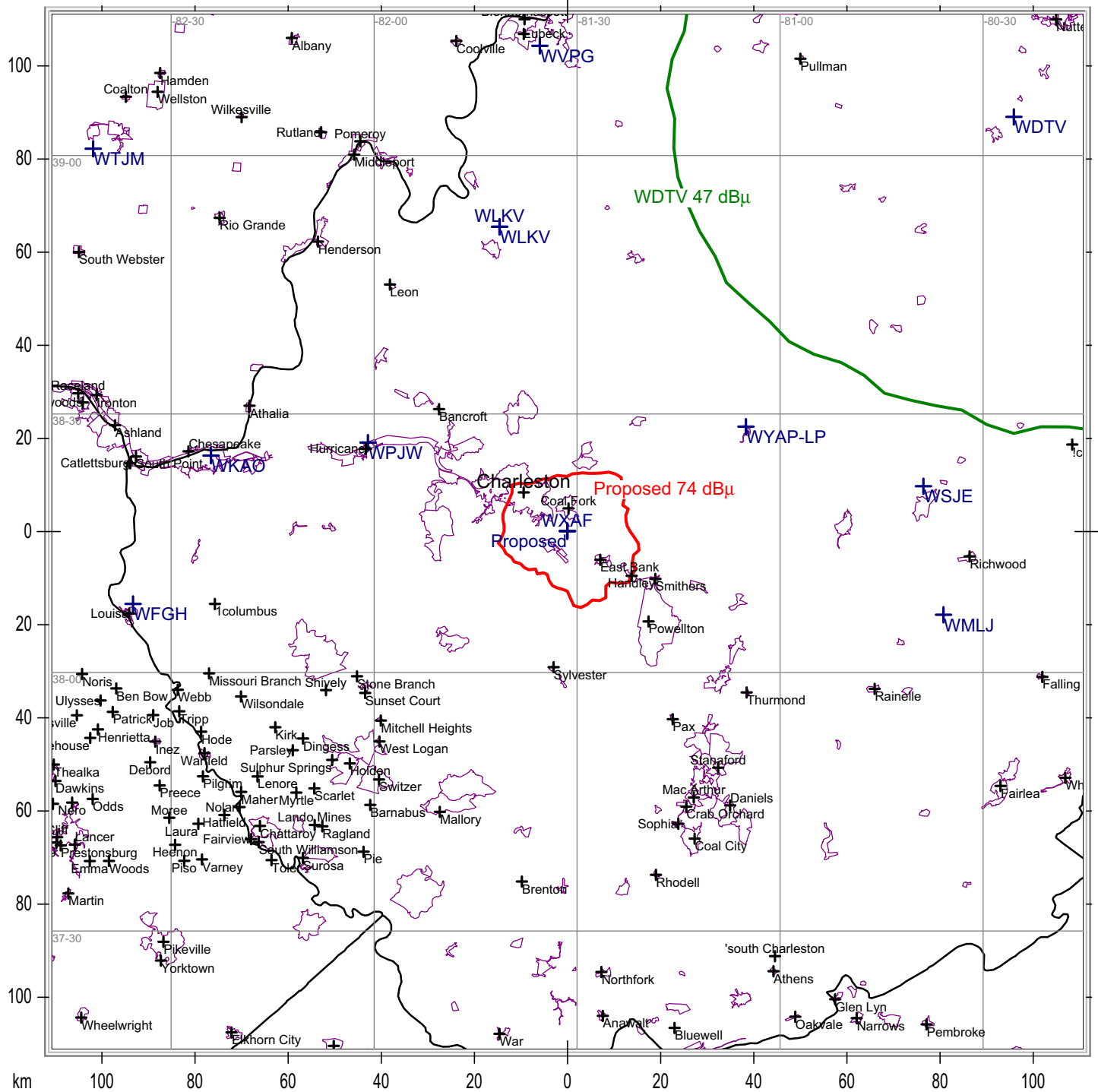


Exhibit 21 Figure 1
Shofar Broadcasting Corporation
No Overlap with TV 6
Charleston, West Virginia

State Borders City Borders Lat/Lon Grid