

## **EXHIBIT 12**

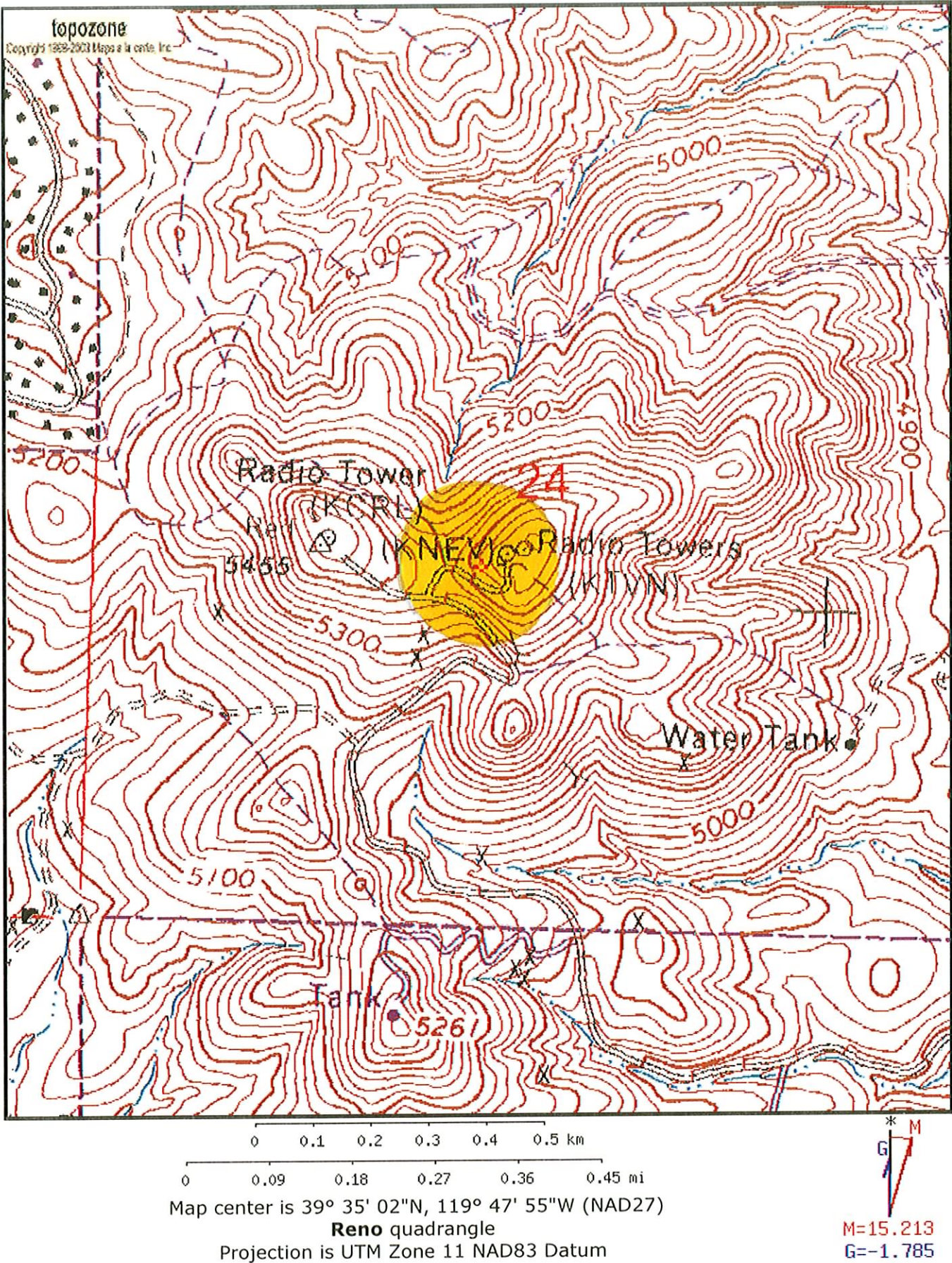
**Waiver Request of Section 74.1204**  
K200AA Sun Valley, NV 28 watts ERP  
Calvary Chapel of Twin Falls, Inc. 4/06

The proposed site is contained entirely inside the service contour of second-adjacent FM Station KLRH, Sparks and its application

### **KLRH**

The proposed site is contained entirely inside the service contour of second-adjacent FM Station KLRH (and application BPED-20050822ANY), Channel 202, Class C1, 1.8kW, Sparks, NV. The level of least arriving protected F(50,50) signal at the proposed transmitter site between the licensed KLRH and its application is 70.6-dBu. KLRH.LIC will be used for this study and any grant to the application will create a better situation at 72.7. Using the Undesired-to-Desired method for calculating proposed interference, the interfering contour with respect to KLRH is 110.6-dBu (free-space contour method employed). The interfering signal would, in the worst case at the maximum radial, extend 112 meters, or .112 km from the base of the tower. A portion of the TOPO map Reno is attached showing this .112km interference area. This is a designated communications site and there are no residences, businesses or major roadways located within this interference contour. Calvary Chapel of Twin Falls, Inc. respectfully requests a waiver of the FM translator contour overlap regulations with respect to second-adjacent channel KLRH.







Contour.out

TERRAIN AND CONTOUR DATA  
CALVARY CHAPEL OF TWIN FALLS, INC.  
APRIL 2006  
SUN VALLEY, NV K200AA  
28 WATTS ERP  
N. Lat. = 39 35 02 W. Lng. = 119 47 55  
HAAT and Distance to Contour - FCC Method - 03 Arc Sec.

Azi .	AV EL	HAAT	ERP kW	dBk	Fi el d	60-F5
000	1637.0	52.0	0.0280	-15.53	1.000	5.44
030	1484.5	204.5	0.0280	-15.53	1.000	10.82
060	1449.8	239.2	0.0280	-15.53	1.000	11.66
090	1488.2	200.8	0.0280	-15.53	1.000	10.72
120	1424.7	264.3	0.0280	-15.53	1.000	12.24
150	1389.5	299.5	0.0280	-15.53	1.000	13.04
180	1396.5	292.5	0.0280	-15.53	1.000	12.89
210	1556.0	133.0	0.0280	-15.53	1.000	8.64
240	1556.5	132.5	0.0280	-15.53	1.000	8.63
270	1983.8	-294.8	0.0280	-15.53	1.000	4.06
300	1595.5	93.5	0.0280	-15.53	1.000	7.24
330	1553.5	135.5	0.0280	-15.53	1.000	8.73

Ave EI = 1542.94 M HAAT= 146.06 M AMSL= 1689 M



## Antenna Structure Registration

[FCC](#) > [WTB](#) > [ASR](#) > [Online Systems](#) > TOWAIR[FCC Site Map](#)

### TOWAIR Determination Results

[? HELP](#)[New Search](#)[Printable Page](#)

#### \*\*\* NOTICE \*\*\*

TOWAIR's findings are not definitive or binding, and we cannot guarantee that the data in TOWAIR are fully current and accurate. In some instances, TOWAIR may yield results that differ from application of the criteria set out in 47 C.F.R. Section 17.7 and 14 C.F.R. Section 77.13. A positive finding by TOWAIR recommending notification should be given considerable weight. On the other hand, a finding by TOWAIR recommending either for or against notification is not conclusive. It is the responsibility of each ASR participant to exercise due diligence to determine if it must coordinate its structure with the FAA. TOWAIR is only one tool designed to assist ASR participants in exercising this due diligence, and further investigation may be necessary to determine if FAA coordination is appropriate.

#### DETERMINATION Results

**Structure does not require registration. There are no airports within 8 kilometers (5 miles) of the coordinates you provided.**

#### Your Specifications

##### NAD83 Coordinates

Latitude	39-35-01.7 north
Longitude	119-47-58.7 west

##### Measurements (Meters)

Overall Structure Height (AGL)	56.4
Support Structure Height (AGL)	56.4
Site Elevation (AMSL)	1655

##### Structure Type

TOWER - Free standing or Guyed Structure used for Communications Purposes

#### Tower Construction Notification

Notify Tribes and Historic Preservation Officers of your plans to build a tower.

Note: Notification does NOT replace [Section 106 Consultation](#).

#### ASR Help

[ASR License Glossary](#) - [FAQ](#) - [Online Help](#) - [Documentation](#) - [Technical Support](#)

#### ASR Online Systems

[TOWAIR](#) - [CORES](#) - [ASR Online Filing](#) - [Application Search](#) - [Registration Search](#)

#### About ASR

[Privacy Statement](#) - [About ASR](#) - [ASR Home](#)

445 12th Street SW  
Washington, DC 20554

TTY: 1-888-TELL-FCC (1-888-835-5322)  
E-mail: [fccinfo@fcc.gov](mailto:fccinfo@fcc.gov)