

Channel Study

REFERENCE		CH# 210D - 89.9 MHz, Pwr= 0.011 kW, HAAT= 365.0 M, COR= 1881 M								DISPLAY DATES	
42 51 46.0 N.		Average Protected F(50-50)= 11.4 km								DATA 04-19-13	
112 31 03.0 W.		Omni-directional								SEARCH 04-19-13	
CH CITY	CALL	TYPE STATE	ANT STATE	AZI. <--	DIST FILE #	LAT. LNG.	Pwr (kW) HAAT (M)	INT (km) COR (M)	PRO (km) LICENSEE	*IN* (Overlap in km)	*OUT*
210D Pocatello	K210DT	LIC	C ID	158.4 338.4	6.64 BLFT20090911ABO	42 48 26.0 112 29 15.0	0.010 595	53.8 2213	14.7 Educational Media Foundati	-50.3*	-18.5*
212C3 Pocatello	KZJB	LIC	VX ID	0.0 0.0	0.00 BLED20050727ACZ	42 51 46.0 112 31 03.0	0.910 314	2.0 1842	39.1 Calvary Chapel Of Idaho Fa	-15.2*	-39.3*
210C0 Twin Falls	KAWZ	LIC	VX ID	265.2 83.9	155.45 BLED20060403ANA	42 43 47.0 114 24 52.0	100.000 302	167.6 1475	68.5 Calvary Chapel Of Twin Fal	-25.0*	41.0
208C0 Rigby	KLRI	LIC	VX ID	350.7 170.6	71.93 BLED20050729DTE	43 30 04.0 112 39 44.0	78.000 466	11.8 2033	84.8 Educational Media Foundati	47.0	-13.1*
06NT La Barge, Etc.	K06FD	LI	DHN WY	107.7 289.2	189.06 BLTT3470	42 19 27.0 110 19 35.0	0.070 687	0.2 2753	85.1 Central Wyoming College	134.5R	54.6M
06NT Henefer, Etc.	DK06IM	LI	DHN UT	156.5 337.2	227.88 BLTTV4927	40 58 40.0 111 26 08.0	0.005 192	0.2 1865	85.1 Summit County	134.5R	93.4M
06NT Wanship	K06JH	LI	D N UT	157.5 338.2	246.58 BLTTV20021118ACN	40 48 31.0 111 23 41.0	0.043 95	0.2 1824	85.1 Summit County	134.5R	112.1M
06NT Peoa And Oakley	K06OV	LI	D N UT	157.7 338.5	256.47 BLTTV20090624ADT	40 43 21.0 111 21 46.0	0.040 332	0.2 2195	85.1 Summit County	134.5R	122.0M
06 D Nampa	1330983	CP	D N ID	289.5 107.1	307.16 BNPDVL20090825BZD	43 43 49.0 116 07 19.0	0.300 644	0.2 1620	85.1 One Ministries, Inc.	134.5R	172.7M
06 D Ryndon	K06NY-D	LI	D Y NV	231.6 49.5	331.78 BLDTV20111219ABC	40 57 54.0 115 36 47.0	0.062 24	0.2 1586	85.1 Elko Television District	134.5R	197.3M
06 D Elko	K06MK-D	LI	D N NV	230.3 48.2	347.88 BLDTV20111123AAA	40 49 16.0 115 42 04.0	0.100 428	0.2 2001	85.1 Elko Television District	134.5R	213.4M
06 2C Butte	KTVM-TV	LI	HN MT	1.0 181.0	349.68 BLCDT20100629AVB	46 00 27.0 112 26 30.0	19.200 591	0.2 2566	85.1 Bluestone License Holdings	134.5R	215.2M
06 D Townsend	1352968	AP	D N MT	11.1 191.7	387.26 BNPDTV20090825BEB	46 16 38.8 111 33 05.6	0.050 370	0.2 1535	85.1 Townsend Tv District	134.5R	252.8M
06 D White Sulphur Sprin	K06NV-D	LI	D N MT	17.6 198.8	421.17 BLDTV20120618ACA	46 27 44.0 110 51 22.0	0.060 340	0.2 1849	85.1 Meagher County Television	134.5R	286.7M

Terrain database is NGDC 30 SEC, R= 73.215 qualifying spacings or FCC minimum spacings in KM, M= Margin in KM
 Contour distances are on direct line to and from reference station. Reference Zone=West Zone, Co to 3rd adjacent.
 All separation margins (if shown) include rounding
 Ant Column: (D= DA Standard, Z= DA 73.215, N= Not DA 73.215, _= Omni), Polarization (C,H,V,E), Beamtilt(Y,N,X)
 "*"affixed to 'IN' or 'OUT' values = site inside protected contour.

Compliance with C.F.R. 74.1204

The proposed FM Translator is located within the protected 60 dBu contour of second adjacent channel stations KZJB channel 212C3 (Pocatello, ID) and KLRI channel 208C0 (Rigby, ID). According to 74.1204(a)(3), in order to protect second and third adjacent facilities, the difference in dBu between the two facilities must not exceed 40dBu.

The proposed ERP for K210DT: 11 watts

The proposed COR for K210DT: 101 meters

KZJB F(50/50) contour at proposed site: 70.9 dBu

The F(50/10) contour of proposed K210DT 110.9 dBu

The predicted distance to K210DT interference contour: 66.3 meters

KLRI F(50/50) contour at proposed site: 65.2 dBu

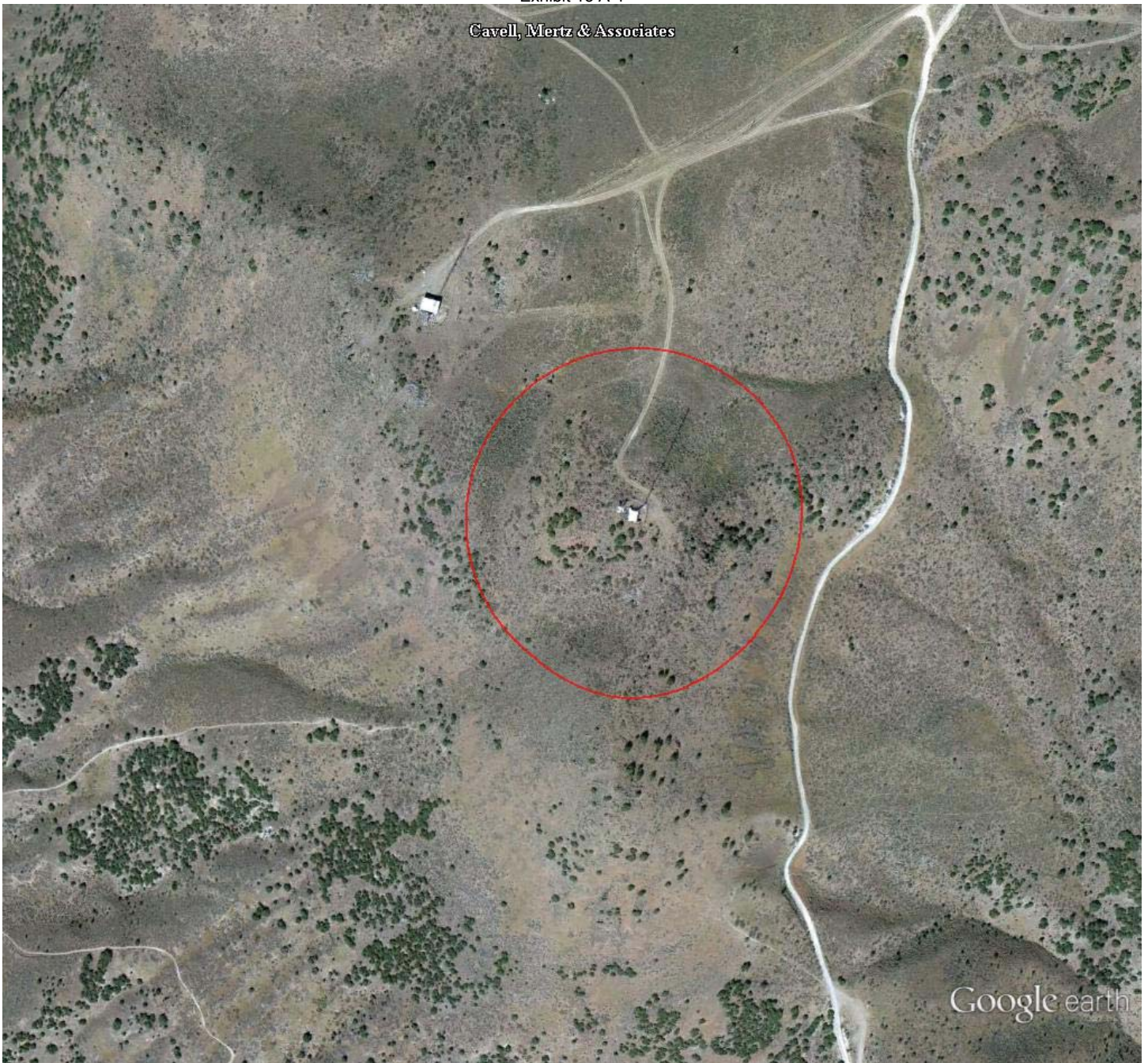
The F(50/10) contour of proposed K210DT 105.2 dBu

The predicted distance to K210DT interference contour: 127.8 meters

As can be seen in Exhibit 13 - A1, there are no regularly occupied structures at the base of the tower and there are no structures which could be tall enough to enter the furthest maximum distance to interference contour of 127.8m.

Therefore, EMF respectfully requests a waiver of C.F.R. 74.1204 based on no population within the area of predicted interference.

Cavell, Mertz & Associates



Google earth

feet 1000
meters 500



NAD27 COORDINATES

42 51 46 N

112 31 03 W

The red circle extends 127.8m from the base of the site.