

## ENGINEERING STATEMENT

### Second/Third Adjacent, IF Protection

The proposed station on channel 231D with an effective radiated power of 99 watts will not cause any existing, applied for or proposed facility. However, the proposed station is inside the 60 dBu contour second adjacent station KLZT at Bastrop, Texas at a distance of 32.2 km.

As the signal strength of KLZT is well above 60 dBu at the proposed tower, the 40 dBu ratio has been applied to the contour of KLZT.

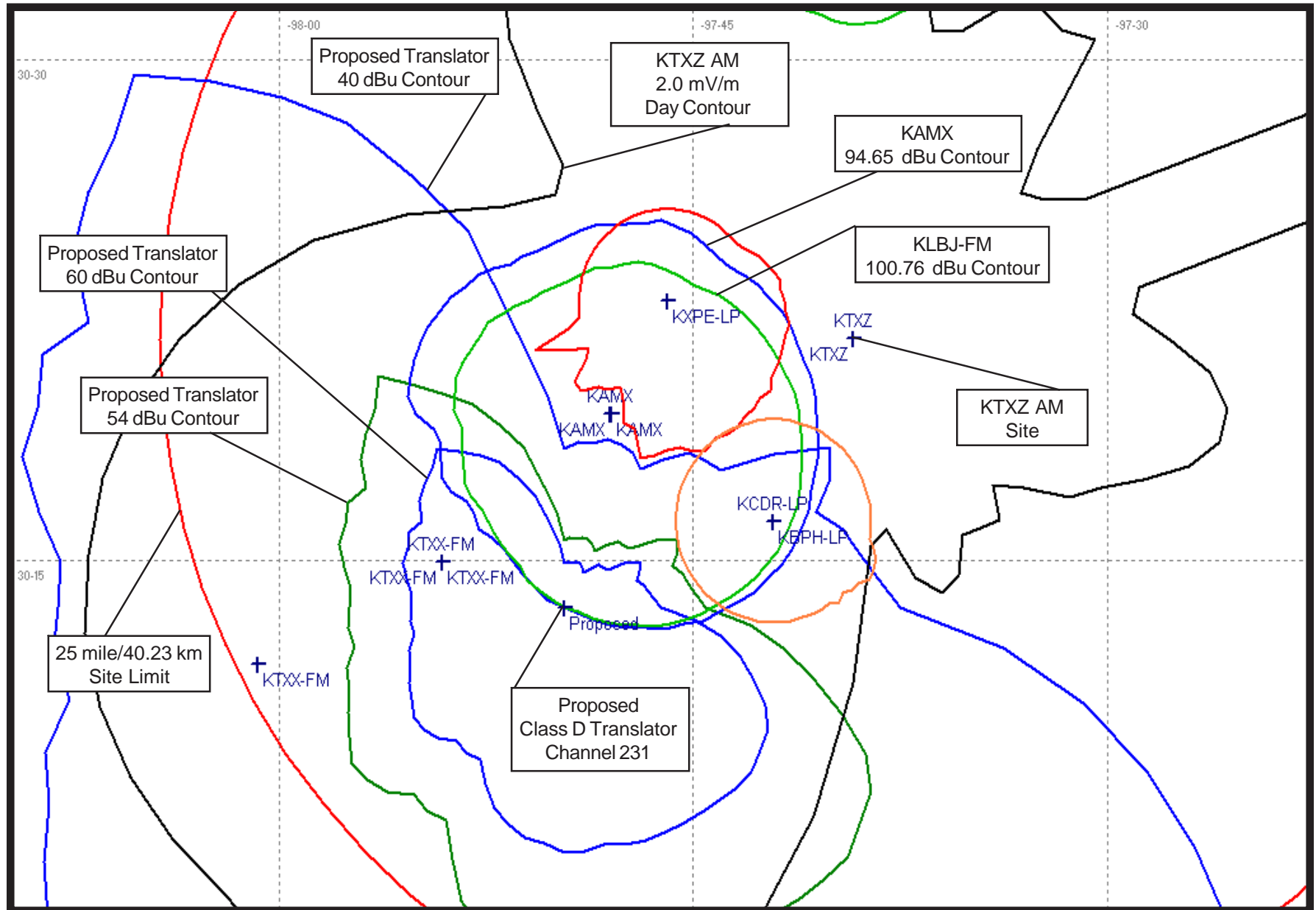
As such, the interfering signal would necessarily be above 70.04 dbu cause interference to KLZT at the proposed translator site. Based upon free space computations, the 114.04 dBu contour of the proposed facility extends only 0.001 km (less than 10 feet) from the proposed antenna. The computed point of interference is well above five (5) meters and therefore, no human population will be impacted.

Additionally, the proposed translator at Austin, Texas is short-spaced with IF station KHFI-FM at Georgetown, Texas on channel 244C1. Per Section 74.1325(g), the instant proposal is limited to an ERP of less than 0.100 kW, thus the proposal to operate the proposed facilities at 0.099 kW.

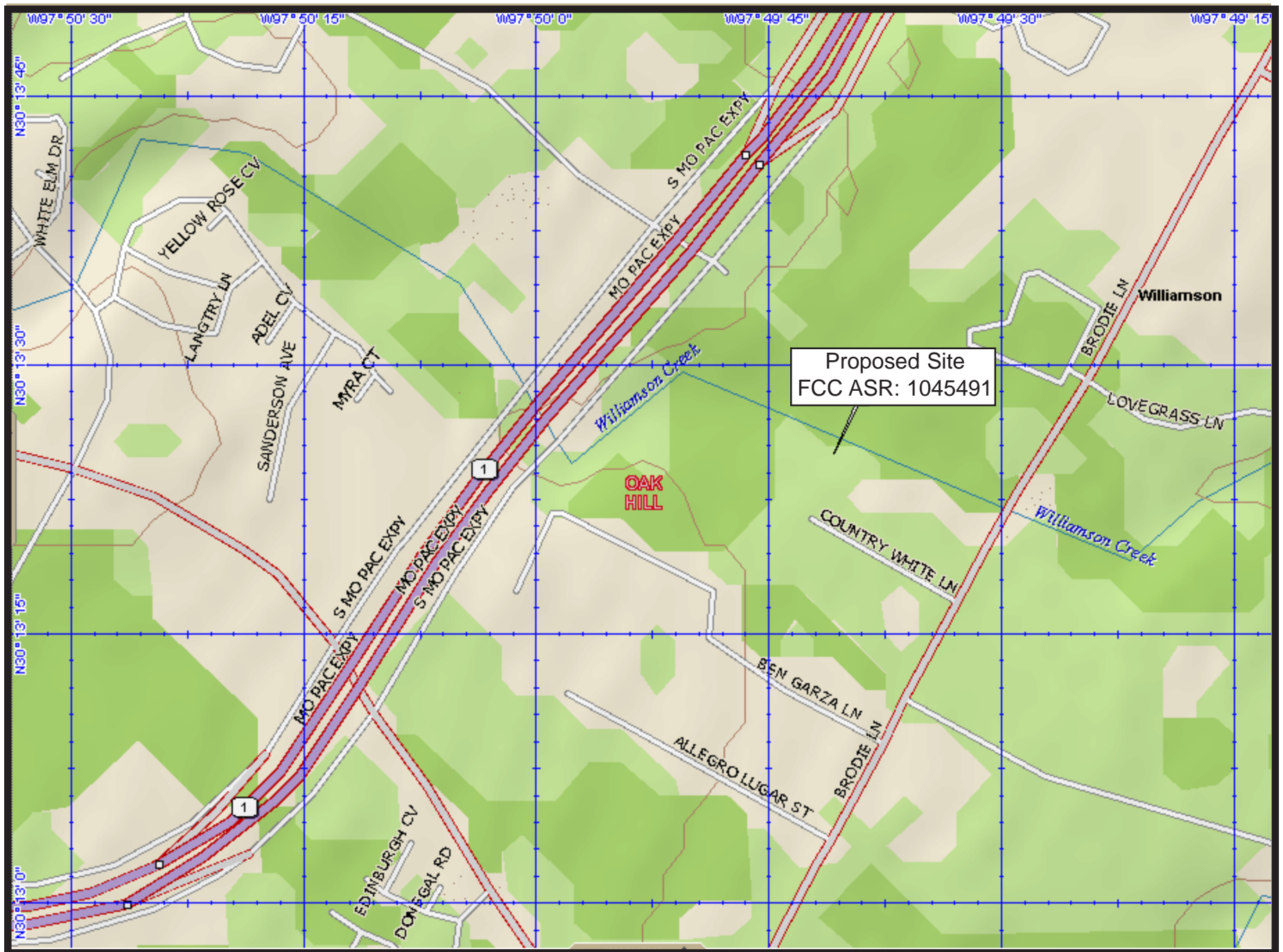
### AM FILL-IN

As proposed the translator on channel 298D will operate as a "Fill In" service translator to AM station KTXZ at Westlake Hills, Texas.

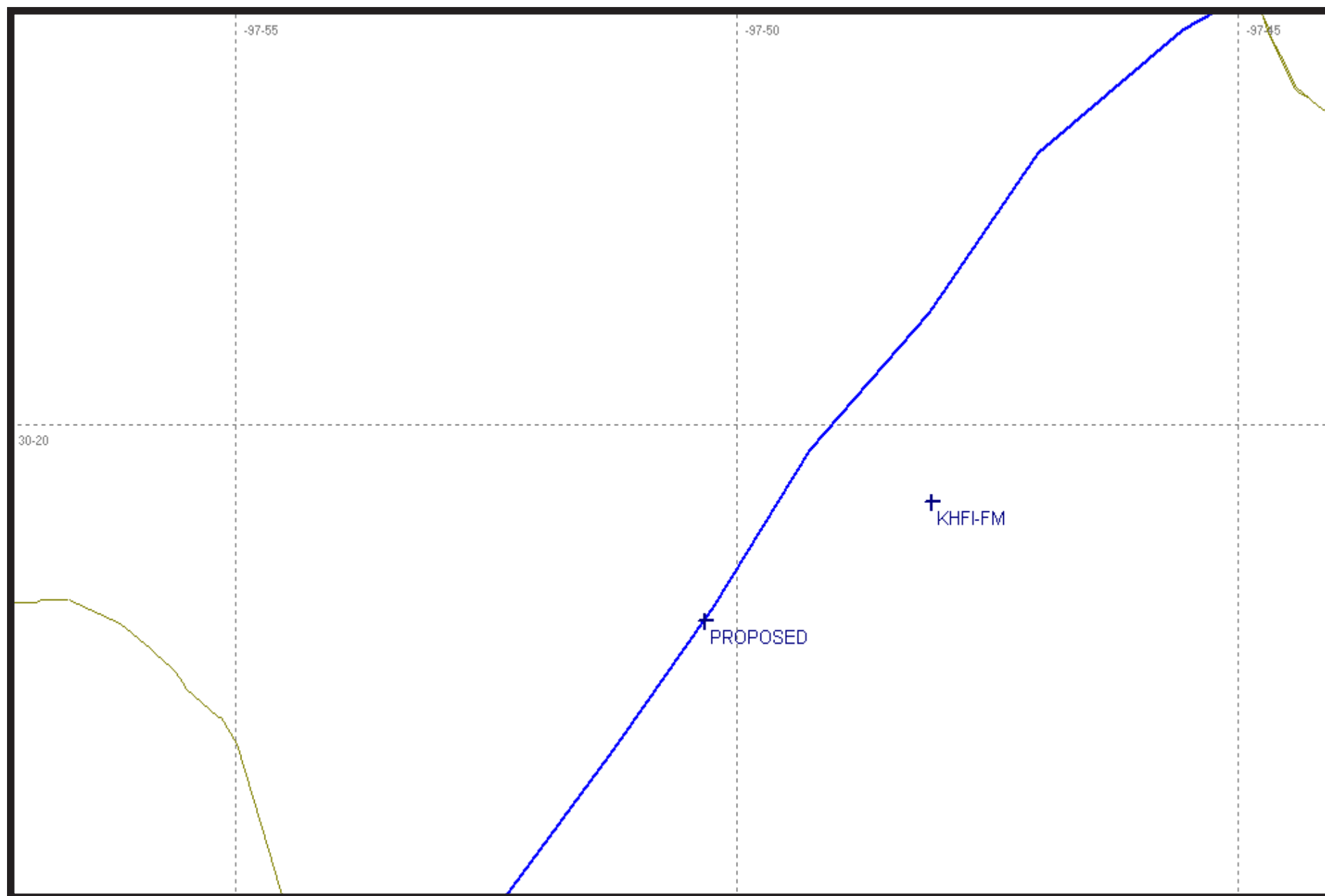
Map Indicating Protected Contours In Allocation of  
Proposed KTXZ Fill-In Translator on Channel 231 at Austin, Texas

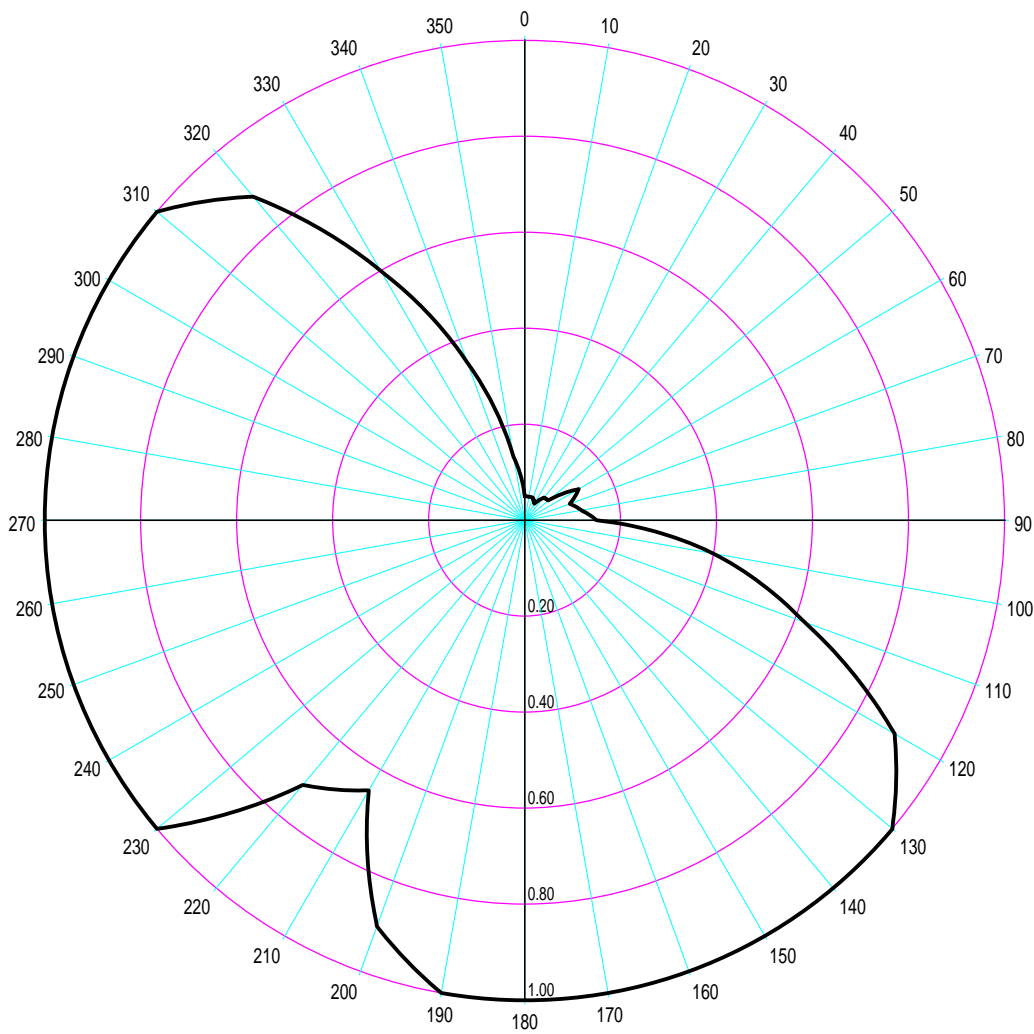


## Portion of USGS 7.5 Minute Series Map Entitled: "Oak Hill, Texas"



Map Indicating KLZT 70.04 dBu Contour (Blue)  
at Proposed Translator Site





Azim	Rel.FS	ERP [W]	dBk
0.0	0.050	0.248	-36.064
5.0	0.050	0.248	-36.064
10.0	0.050	0.248	-36.064
15.0	0.050	0.248	-36.064
20.0	0.050	0.248	-36.064
25.0	0.045	0.200	-36.979
30.0	0.040	0.158	-38.002
35.0	0.051	0.257	-35.892
40.0	0.062	0.381	-34.196
45.0	0.063	0.393	-34.057
50.0	0.065	0.418	-33.785
55.0	0.097	0.931	-30.308
60.0	0.130	1.673	-27.765
65.0	0.115	1.309	-28.830
70.0	0.100	0.990	-30.044
75.0	0.110	1.198	-29.216
80.0	0.120	1.426	-28.460
85.0	0.135	1.804	-27.437

Azim	Rel.FS	ERP [W]	dBk
90.0	0.150	2.228	-26.522
95.0	0.275	7.487	-21.257
100.0	0.400	15.840	-18.002
105.0	0.510	25.750	-15.892
110.0	0.620	38.056	-14.196
115.0	0.755	56.432	-12.485
120.0	0.890	78.418	-11.056
125.0	0.945	88.409	-10.535
130.0	1.000	99.000	-10.044
135.0	1.000	99.000	-10.044
140.0	1.000	99.000	-10.044
145.0	1.000	99.000	-10.044
150.0	1.000	99.000	-10.044
155.0	1.000	99.000	-10.044
160.0	1.000	99.000	-10.044
165.0	1.000	99.000	-10.044
170.0	1.000	99.000	-10.044
175.0	1.000	99.000	-10.044

Azim	Rel.FS	ERP [W]	dBk
180.0	1.000	99.000	-10.044
185.0	1.000	99.000	-10.044
190.0	1.000	99.000	-10.044
195.0	0.950	89.347	-10.489
200.0	0.900	80.190	-10.959
205.0	0.775	59.462	-12.258
210.0	0.650	41.828	-13.785
215.0	0.685	46.453	-13.330
220.0	0.720	51.322	-12.897
225.0	0.860	73.220	-11.354
230.0	1.000	99.000	-10.044
235.0	1.000	99.000	-10.044
240.0	1.000	99.000	-10.044
245.0	1.000	99.000	-10.044
250.0	1.000	99.000	-10.044
255.0	1.000	99.000	-10.044
260.0	1.000	99.000	-10.044
265.0	1.000	99.000	-10.044

Azim	Rel.FS	ERP [W]	dBk
270.0	1.000	99.000	-10.044
275.0	1.000	99.000	-10.044
280.0	1.000	99.000	-10.044
285.0	1.000	99.000	-10.044
290.0	1.000	99.000	-10.044
295.0	1.000	99.000	-10.044
300.0	1.000	99.000	-10.044
305.0	1.000	99.000	-10.044
310.0	1.000	99.000	-10.044
315.0	0.940	87.476	-10.581
320.0	0.880	76.666	-11.154
325.0	0.740	54.212	-12.659
330.0	0.600	35.640	-14.481
335.0	0.475	22.337	-16.510
340.0	0.350	12.127	-19.162
345.0	0.242	5.798	-22.367
350.0	0.135	1.804	-27.437
355.0	0.092	0.838	-30.768