

## Engineering Statement Regarding Second &/or Third Adjacent Channel Interference

---

This application proposes an FM translator that will, according to the FCC Rules cause interference to facilities on either or both of the second or third adjacent channels in the area immediately surrounding the proposed FMT site.

It either or both cases, the applicant will demonstrate with map diagrams and/or text descriptions that demonstrate that the interference, while predicted, will not cause actual interference.

The applicant hereby requests a waiver of section 73.1204 of the rules based on paragraph 73.1204(d) of the rules, in that the proposed area of interference is uninhabited and/or unpopulated and thus will there not cause any actual interference.

Further, the applicant hereby requests that the Commission allow the applicant to calculate and demonstrate the area of interference using the well established principles of Undesirable/Desirable signal ratio of 40 dBu, as outlined in section 73.215(2) of the rules.

In making these requests, the applicant submits that by granting them, the Commission would allow additional service that would otherwise not be permitted, and that are in conformity with the Commission's rules. The public interest would thus be served.

Channel Study											
Proposed 297 Loveland											
Average Protected F(50-50)= 3.15 km											
HAAT=0.0 M, COR= 2078 M											
DISPLAY DATES											
DATA 07-19-03											
SEARCH 08-03-03											
REFERENCE	CH#	297D	-	107.3 MHz,	Pwr= 0.01 kW,	HAAT=0.0 M,	COR=	2078 M			
40 29 36 N											
105 10 52 W	Ave. F(50-10)	40	dBu= 10.2	54	dBu= 4.4	80	dBu= 1.6	100	dBu= .2		
CH	CALL	TYPE	AZI	DI ST	LAT	Pwr(kW)	COR(M)	PRO(km)	*IN*	*OUT*	
CITY	STATE		<--	FILE #	LNG	HAAT(M)	INT(km)	LICENSEE	(Overlap	in km)	
300C1 KPAW Fort Collins	LIC C CO	44.0 224.0	29.00 BLH19981216KC	40 40 50 104 56 32	100.000 256	1790 0.2	68.7 Jacor Broadcasting	6.98	-39.96*<		
300C1 ALLO Fort Collins	USE CO	44.0 224.0	29.00 BLH6757	40 40 50 104 56 32	100.000 -1534	0 0.2	31.0	13.18	-2.19*<		
Coordinates updated from LIC record											
300C1 KPAW. A Fort Collins	APP ZCX CO	358.6 178.6	44.62 BPH20030602ACS	40 53 42 105 11 38	100.000 326	2170 0.1	74.3 Jacor Broadcasting	26.07	-29.81*<		
298C KQKS Lakewood	LIC C CO	179.1 359.1	88.56 BLH19991214ABI	39 41 45 105 09 54	100.000 352	2081 3.8	76.3 Jefferson-pilot	-25.45<	8.49	Communicat	
298C ALLO Lakewood	USE CO	179.1 359.1	88.56 BMLH860418KJ	39 41 45 105 09 54	100.000 -1729	0 3.8	31.0	27.46	53.78		
Coordinates updated from LIC record											
294C ALLO Denver	USE CO	183.2 3.2	84.55 RM BLH851120KC	39 43 59 105 14 12	100.000 -1828	0 0.0	31.0	78.76	53.55		
Coordinates updated from LIC record											
294C KBPI Denver	LIC CN CO	183.2 3.2	84.55 BLH19851120KC	39 43 59 105 14 12	100.000 488	2316 0.0	86.0 Jacor Broadcasting	69.43	-1.48*<		
294C KBPI. A Denver	APP CY CO	183.2 3.2	84.58 BPH20030424AAP	39 43 58 105 14 08	100.000 467	2292 0.0	84.6 Jacor Broadcasting	69.64	-0.09*<		
294C KBPI. A Denver	APP CY CO	183.2 3.2	84.58 BPH20030424AAP	39 43 58 105 14 08	100.000 467	2292 0.0	84.6 Jacor Broadcasting	69.64	-0.09*<		
296C1 KSIRFM< Brush	LIC NHN CO	104.7 284.7	94.63 BLH19950915KB	40 16 24 104 06 16	100.000 278	1640 11.1	70.6 Kkdd-fm Broadcasters	-15.13<	13.00		
295D AP295 Masonville	APP C CO	318.1 138.1	18.56 BNPFT20030317EIK	40 37 03 105 19 40	0.003 472	2549 0.0	8.5 Mitche l l A. Beranek	17.67	10.03		
296C KSIRFM< Bennett	CP NCX CO	121.3 301.3	120.90 BMPH20030109AFL	39 55 22 103 58 18	92.000 643	2105 3.9	92.6 Kkdd-fm Broadcasters	-18.45<	24.46		
296C1 ALLO Brush	USE CO	100.7 280.7	133.61	40 15 39 103 38 15	100.000 -1302	0 12.3	31.0	66.73	90.34		
296D KSIRF1 Hudson	LIC DC CO	130.0 310.0	64.20 BLFTB19991227ABB	40 07 15 104 36 13	8.721 129	1629 1.6	34.7 Kkdd-fm Broadcasters	10.74	27.97		
300D AP300 Bergen Park	APP DC CO	180.8 0.8	57.90 BNPFT20030310AAD	39 58 19 105 11 25	0.000 1728	3310 0.0	0.0 Timothy C. Cutforth	55.61	57.88		
297C3 KKA Albin	LIC NC WY	39.3 219.3	144.23 BLH20001201ABA	41 29 31 104 05 07	9.300 81	1719 45.5	28.3 Tsb l i, Inc	41.07	70.37		
296C ALLO Brush	USE CO	113.5 293.5	159.77	39 54 34 103 27 58	100.000 -1383	0 7.4	31.0	96.45	121.45		
296C ALLO Brush	USE CO	113.5 293.5	159.77	39 54 34 103 27 58	100.000 -1383	0 7.4	31.0	96.45	121.45		
295D AP295 Buford	APP C WY	358.6 178.6	64.98 BNPFT20030317LVW	41 04 42 105 11 59	0.034 225	2388 0.1	11.9 Mary Medi cus	56.54	52.98		
297C3 ALLO Albin	USE WY	38.0 218.0	152.15	41 34 00 104 03 24	25.000 -1568	0 45.3	22.7	39.78	84.17		
296D AP296 Cheyenne	APP C WY	29.8 209.8	82.12 BNPFT20030317LMI	41 08 00 104 41 37	0.250 -5	1865 18.6	7.1 Mi tchel l A. Beranek	59.80	56.44		
298D K298AE Laramie	LIC DC WY	345.0 165.0	85.08 BLFT20010717AAR	41 13 58 105 26 42	0.003 203	2724 4.8	6.0 Western Inspi rati onal Broa	73.06	74.29		
296D K296BO Laramie	LIC CN WY	344.1 164.1	86.03 BLFT19810724IA	41 14 16 105 27 48	0.080 140	2661 4.8	11.5 Laramie Plains Ant. Tv Ass	65.98	69.72		
TRANSLATOR FOR KVOD, DENVER, CO.											
297C2 ALLO Hayden	USE CO	271.7 91.7	179.30	40 31 16 107 17 46	50.000 -2039	0 3.0	26.5	62.66	149.80		
From channel 297A per one-step application											

CH CITY	CALL	TYPE STATE	AZI. <--	DIST FILE #	LAT. LNG.	Pwr(kW) HAAT(M)	COR(M) INT(km)	PRO(km) LICENSEE	*IN* (Overlap in km)	*OUT*
297C2 Hayden	KRMR	LIC C CO	271.7 91.7	179.30 BLH20000731ACV	40 31 16 107 17 46	29.000 213	2252 3.0	53.5 Salisbury Broadcasting Col	44.26	122.80

\*\*\*Affixed to 'IN' or 'Out' values = site inside protected contour.  
ERP and HAAT are on direct line to and from reference station.  
"«" = Station meets FCC minimum distance spacing for its class. "<" = Contour Overlap

Terrain and Contour Study

N. Lat. = 40 29 36 W. Lng. = 105 10 52

HAAT and Distance to Contour - FCC Method - 03 Arc. Sec.

Proposed 297 Loveland

Azi.	AV EL	HAAT	ERP kW	dBk	Field	60-F5	54-F1	100-F1
000	1735.6	342.4	0.0043	-23.65	0.657	8.52	12.36	0.15
030	1585.4	492.6	0.0091	-20.40	0.955	12.20	18.63	0.21
060	1552.0	526.0	0.0089	-20.50	0.944	12.38	19.11	0.21
090	1533.7	544.3	0.0039	-24.04	0.628	9.72	15.01	0.14
120	1562.2	515.8	0.0001	-39.85	0.102	2.16	4.01	0.02
150	1586.0	492.0	0.0000	-49.12	0.035	0.78	1.55	0.01
180	1621.6	456.4	0.0001	-39.08	0.111	2.33	4.29	0.02
210	1803.5	274.5	0.0006	-32.27	0.244	3.99	6.41	0.05
240	1963.2	114.8	0.0006	-32.38	0.240	2.88	4.25	0.05
270	2144.5	-66.5	0.0001	-40.37	0.096	1.61	1.61	0.02
300	1917.7	160.3	0.0000	-49.37	0.034	0.75	1.50	0.01
330	1878.6	199.4	0.0002	-37.71	0.130	2.35	3.78	0.03

Ave El= 1740.34 M HAAT= 337.66 M AMSL= 2078

Channel Study  
Proposed 297 Level and vs KQKS

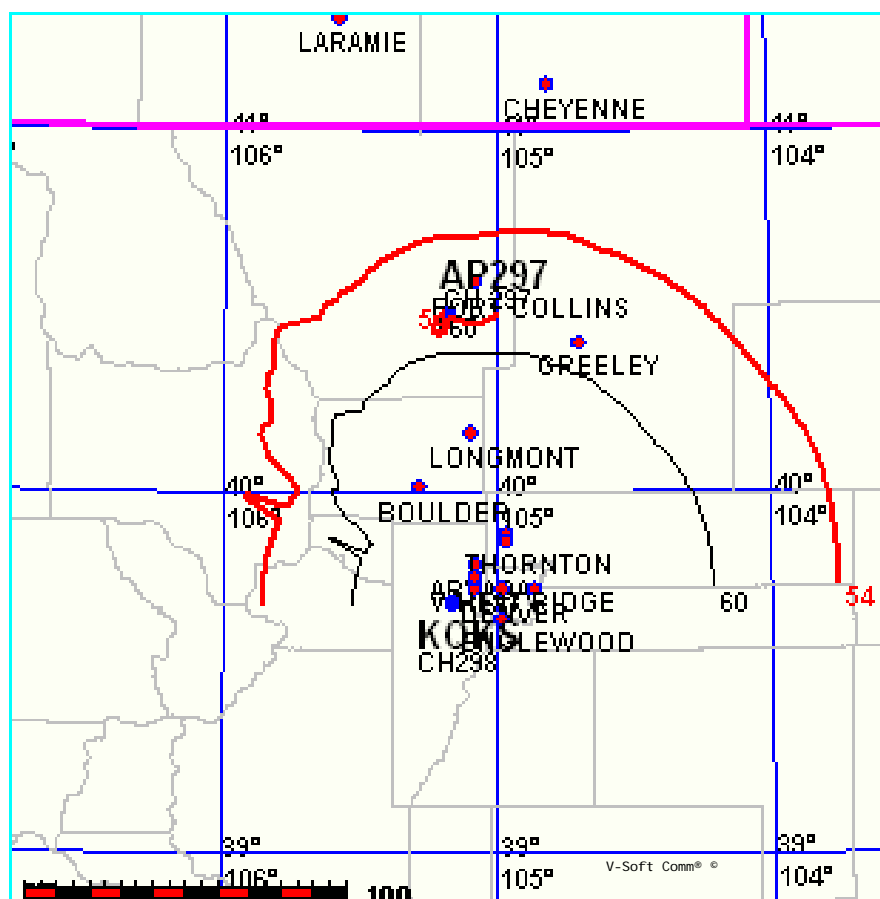
FMCONT Allocation Study

08-03-2003

AP297 CH 297 D  
.01 kW 2078M COR DA  
Prot. = 60 dBu  
Intef. = 54 dBu

KQKS CH 298 C  
100kW, 2081 M COR  
Prot. = 60 dBu  
Intef. = 54 dBu  
File # BLH19991214ABI

1: 2, 500, 000



Channel Study  
Proposed 297 Level and vs KSIR

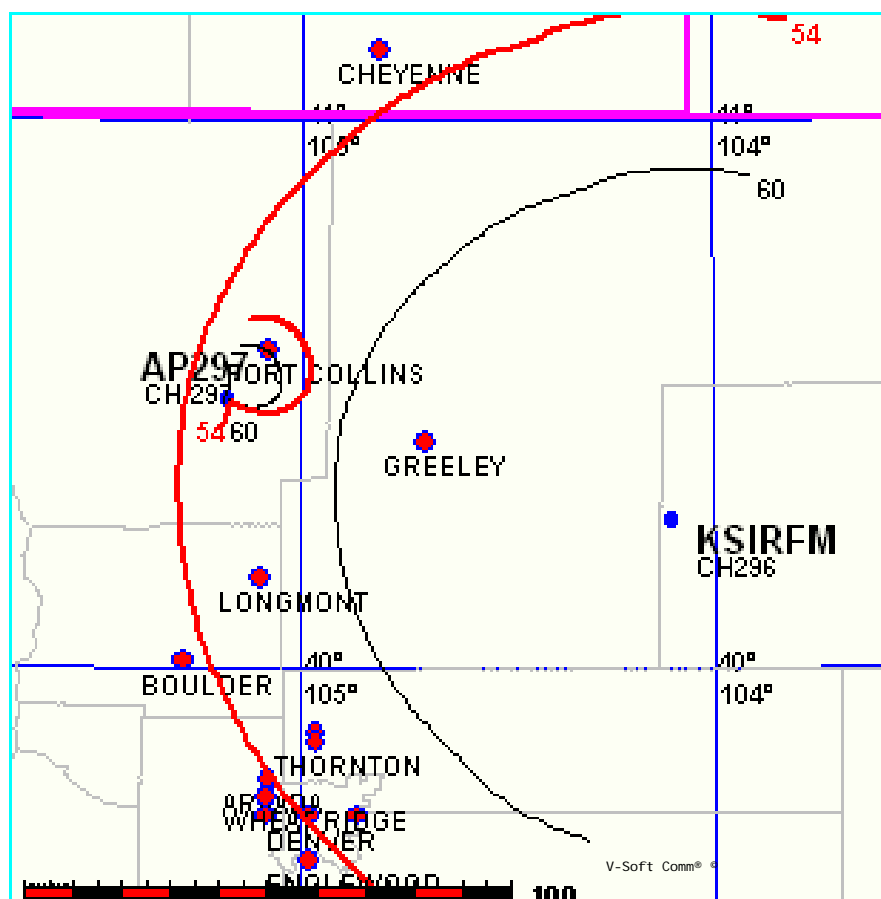
FMCONT Allocation Study

08-03-2003

AP297 CH 297 D  
.01 kW 2078M COR DA  
Prot. = 60 dBu  
Intef. = 54 dBu

KSIRFM CH 296 C1  
100kW, 1640 M COR  
Prot. = 60 dBu  
Intef. = 54 dBu  
File # BLH19950915KB

1: 1,648,438





# EXHIBIT 12b

## Demonstration of No Population in 100 dBu Interference Contour

