

**Exhibit 11**  
**Parties to the Application**

The tables below, which correspond to the table included in Section III, Item 4(a) list the following:

- 1) Names and residence<sup>1</sup> of the Assignee and, if applicable, its officers, directors, stockholders, other entities with attributable interests, and partners.
- 2) Citizenship.
- 3) Positional Interest: Office, director, general or limited partner, LLC member, investor/creditor attributable under the equity/debt plus standard, etc.
- 4) Percentage of votes.
- 5) Percentage of total assets (debt plus equity).<sup>2</sup>

As depicted in Figures 1 and 2 attached hereto, and described in the tables below, the Managing Directors of Thomas H. Lee Advisors, LLC ("T.H. Lee") and Bain Capital Investors, LLC ("Bain") ultimately control the Assignee through intermediate subsidiaries.

The ownership and control of the proposed Assignee, **Clear Channel Broadcasting Licenses, Inc.**, is as follows:

(1)	(2)	(3)	(4)	(5)
Clear Channel Holdings, Inc. 2625 S. Memorial Dr., Ste. A Tulsa, OK 74129	U.S. Corp.	Sole Shareholder	100%	100%
Mays, L. Lowry 500 Alameda Circle San Antonio, TX 78212	U.S.	Director	0%	0%
Mays, Mark P.	U.S.	Director	0%	0%

<sup>1</sup> An address for each individual is provided only once—in the first table in which that individual appears as an officer, director or shareholder. Bain Capital Investors, LLC is located at 111 Huntington Avenue, Boston, MA 02119. Ropes & Gray is located at One International Place, Boston, MA 02110 and mail should be addressed to the attention of David C. Chapin. Thomas H. Lee Partners is located at 100 Federal Street, 35th Floor, Boston, MA 02110. Individuals associated with Highfields Capital Management LP ("HCMLP") can be reached care of Joseph F. Mazzella, General Counsel at the following address: 200 Clarendon Street, 59<sup>th</sup> Floor, Boston, MA 02116.

<sup>2</sup> The information provided in response to Item 4(a) subpart 5 is the percentage of total voting and non-voting equity in Clear Channel Communications, Inc. ("CCC") or its licensee subsidiaries held by each party to the application, after applying the correct multiplier, if any. No debt or non-attributable equity holder will have an attributable interest in the Assignee by virtue of the "equity debt plus" rule. See 47 C.F.R. § 73.3555, Note 2(i).

(1)	(2)	(3)	(4)	(5)
120 Primrose San Antonio, TX 78209				
Mays, Randall T. 400 Genesco Road San Antonio, TX 78209	U.S.	Director	0%	0%
Hogan, John 30899 Venturer Fair Oaks Ranch, TX 78015	U.S.	President/Chief Executive Officer/Radio Division	0%	0%
Levin, Andrew W. 13751 Bluff Villas Court San Antonio, TX 78216	U.S.	Executive VP/Chief Legal Officer/Secretary	0%	0%
Littlejohn, Jeff 50 E. River Center Blvd., Ste. 1200 Covington, KY 41011	U.S.	Executive VP/Distribution Development	0%	0%
Owens, Tom 5 Merrivale Place San Antonio, TX 78257	U.S.	Executive Vice President/Content Development	0%	0%
Davis, Stephen G. 10701 E. 74 <sup>th</sup> Place Tulsa, Ok 74133	U.S.	Senior VP/Engineering & Capital Management	0%	0%
Hill, Herbert W., Jr. 235 Cloverleaf San Antonio, TX 78209	U.S.	Senior Vice President/Chief Accounting Officer	0%	0%
Coleman, Brian 219 Ridgehaven Place San Antonio, TX 78209	U.S.	Senior Vice President/Treasurer	0%	0%
Dan, Charles G., III 503 Circle St. San Antonio, TX 78209	U.S.	Senior Vice President/Real Estate	0%	0%
Rosales, Stephanie 9531 Shining Elm San Antonio, TX 78254	U.S.	Senior Vice President/ Corporate Accounting and Regulatory Compliance	0%	0%
Tippit, John T. 404 Charles Road San Antonio, TX 78209	U.S.	Senior Vice President/Strategic Development	0%	0%
Rice, Jeff 24938 Birdie Ridge San Antonio, Texas 78260	U.S.	Senior Vice President/Accounting for Radio	0%	0%
Eller, Dirk 438 Abiso Avenue San Antonio, TX 78209	U.S.	Senior Vice President/Corporate Development	0%	0%
Stich, Mary 2602 Friar Tuck San Antonio, TX 78209	U.S.	Vice President/Associate General Counsel	0%	0%
Wolf, Richard W. 139 Parklane Dr. San Antonio, TX 78212	U.S.	Vice President/Corporate Counsel	0%	0%
Bick, Scott 13811 Ridge Farm San Antonio, TX 78230	U.S.	Vice President/Domestic Tax	0%	0%
Harrington, Chris 24823 Shining Arrow San Antonio, TX 78258	U.S.	Vice President/International Tax	0%	0%

(1)	(2)	(3)	(4)	(5)
Newsom, Hamlet T., Jr. 6 Rock Ridge San Antonio, TX 78209	U.S.	Assistant Secretary	0%	0%

The ownership and control of **Clear Channel Holdings, Inc.**, parent of Clear Channel Broadcasting Licenses, Inc., is as follows:

(1)	(2)	(3)	(4)	(5)
Clear Channel Communications, Inc. 2625 S. Memorial Dr., Ste A Tulsa, OK 74129	U.S. Corp.	Sole Shareholder	100%	100%
Mays, L. Lowry	U.S.	Director/Chairman of the Board	0%	0%
Mays, Mark P.	U.S.	Director/Executive Vice President/COO	0%	0%
Mays, Randall T.	U.S.	Director/President/CFO/Secretary	0%	0%
Levin, Andrew W.	U.S.	Executive VP/Chief Legal Officer/Secretary	0%	0%
Coleman, Brian	U.S.	Senior Vice President/Treasurer	0%	0%
Hill, Herbert W., Jr.	U.S.	Senior Vice President/CAO	0%	0%
Dan, Charles G., III	U.S.	Senior Vice President/Real Estate	0%	0%
Rosales, Stephanie	U.S.	Senior VP/Corporate Accounting and Regulatory Compliance	0%	0%
Stich, Mary	U.S.	Vice President/Associate General Counsel	0%	0%
Wolf, Richard W.	U.S.	Vice President/Corporate Counsel	0%	0%
Bick, Scott	U.S.	Vice President/International Tax	0%	0%
Harrington, Chris	U.S.	Vice President/Domestic Tax	0%	0%
Newsom, Hamlet T., Jr.	U.S.	Assistant Secretary	0%	0%

The ownership and control of **Clear Channel Communications, Inc.**, parent of Clear Channel Holdings, Inc., is as follows:

(1)	(2)	(3)	(4)	(5)
Clear Channel Capital I, LLC c/o Ropes & Gray	U.S.	Sole Shareholder	100%	100%
Mays, L. Lowry	U.S.	Director/Chairman	0%	0%
Mays, Mark P.	U.S.	Director/CEO/COO	0%	0%
Mays, Randall T.	U.S.	Director/President/CFO	0%	0%
Feld, Alan 1700 Pacific Ave, Ste. 4100 Dallas, TX 75201	U.S.	Director	0%	0%
Lewis, Perry c/o CRT Capital Group LLC 262 Harbor Drive Stamford, CT 06902	U.S.	Director	0%	0%
McCombs, B.J. 825 Contour Dr. San Antonio, TX 78209	U.S.	Director	0%	0%
Riggins, Phyllis 3412 St. John's Dr. Dallas, TX 75225	U.S.	Director	0%	0%
Strauss, Theodore H. 5100 Park Lane	U.S.	Director	0%	0%

(1)	(2)	(3)	(4)	(5)
Dallas, TX 75220				
Watts, J.C. 2705 Calais Court Norman, OK 73072	U.S.	Director	0%	0%
Williams, John H. 4737 Lafayette Ft. Worth, TX 76107	U.S.	Director	0%	0%
Zachry, John B. 527 Logwood San Antonio, TX 78221	U.S.	Director	0%	0%
Hogan, John	U.S.	President/CEO—Clear Channel Radio	0%	0%
Cohen, Bob 308 Elizabeth Road San Antonio, TX 78209	U.S.	President—Clear Channel International Radio	0%	0%
Meyer, Paul 200 East Basse Road San Antonio, TX 78209	U.S.	Global President/COO—Clear Channel Outdoor Worldwide	0%	0%
Levin, Andrew W.	U.S.	Executive Vice President/Chief Legal Officer/Secretary	0%	0%
Dollinger, Lisa 2100 Robinhood Trail Austin, TX 78703	U.S.	Chief Communications Officer	0%	0%
Coleman, Brian	U.S.	Senior Vice President/Treasurer	0%	0%
Dan, Charles G., III	U.S.	Senior Vice President/Real Estate	0%	0%
Hamersly, Bill 9543 Legend Isle Drive San Antonio, TX 78250	U.S.	Senior Vice President/Human Resources	0%	0%
Hill, Herbert W., Jr.	U.S.	Senior Vice President/CAO/Assistant Secretary	0%	0%
Johnson, Kathryn Mays 528 Terrell Road San Antonio, TX 78209	U.S.	Senior Vice President/Corporate Relations	0%	0%
Marventano, Jessica 2419 North Lincoln Street Arlington, VA 22207	U.S.	Senior Vice President/Government Affairs	0%	0%
Palmer, Randy 13914 Blenheim Ridge San Antonio, TX 78321	U.S.	Senior Vice President/Investor Relations	0%	0%
Rosales, Stephanie	U.S.	Senior Vice President/ Corporate Accounting and Regulatory Compliance	0%	0%
Tippit, John T.	U.S.	Senior Vice President/Strategic Development	0%	0%
Wilson, David E. 2603 Quail Knoll San Antonio, TX 78231	U.S.	Senior Vice President/Chief Information Officer	0%	0%
Bick, Scott	U.S.	Vice President/Domestic Tax	0%	0%
Eller, Dirk	U.S.	Senior Vice President/Corporate Development	0%	0%
Harrington, Chris	U.S.	Vice President/International Tax	0%	0%
Horan, Ace 74 Sable Heights San Antonio, TX 78258	U.S.	Vice President/Financial Systems	0%	0%
Peterson, Paul 6202 Welles Brook Dr. San Antonio, TX 78240	U.S.	Vice President/Corporate Services	0%	0%
Shannon, Joe 914 Foxton Drive	U.S.	Vice President/Chief Technology Officer	0%	0%

(1)	(2)	(3)	(4)	(5)
San Antonio, TX				
Stich, Mary	U.S.	Vice President/Associate General Counsel	0%	0%
Newsom, Hamlet T., Jr.	U.S.	Assistant Secretary	0%	0%

The ownership and control of **Clear Channel Capital I, LLC**, parent of Clear Channel Communications, Inc., is as follows:

(1)	(2)	(3)	(4)	(5)
Clear Channel Capital I, LLC c/o Ropes & Gray	DE LLC	--	--	--
Clear Channel Capital II, LLC c/o Ropes & Gray	DE LLC	Sole Member	100%	100%

The ownership and control of **Clear Channel Capital II, LLC**, parent of Clear Channel Capital I, LLC, is as follows:

(1)	(2)	(3)	(4)	(5)
Clear Channel Capital II, LLC c/o Ropes & Gray	DE LLC	--	--	--
CC Media Holdings, Inc. c/o Ropes & Gray	DE Corp.	Sole Member	100%	100%

The ownership and control of **CC Media Holdings, Inc.**, parent of Clear Channel Capital II, LLC, is as follows:

(1)	(2)	(3)	(4)	(5)
Clear Channel Capital IV, LLC c/o Ropes & Gray	DE U.S.	Single Majority Shareholder	71.6% <sup>3</sup>	71.6% <sup>4</sup>

<sup>3</sup> Clear Channel Media Holdings, Inc. ("CCMH") has a board of directors composed of twelve (12) members. Clear Channel Capital IV, LLC ("CCC IV") has the power to determine ten (10) members, or 83.3% of the CCMH board. T.H. Lee and Bain each have caused CCC IV to vote its shares in CCMH to elect four (4) directors proposed by each entity, as well as to elect Mark P. Mays and Randall Mays. The remaining two (2) members of the CCMH board of directors, or 16.7%, are elected by its public shareholders. One of these two directors has been selected by HCMLP, the investment manager of several funds that each hold less than 5% of the voting stock of CCMH. The other director has been chosen by the nominating committee of CCMH in consultation with HCMLP and other significant public shareholders. In the future, the two independent directors will be selected by public shareholders in CCMH; provided, that until HCMLP owns less than 5% of the outstanding voting securities of CCMH, CCMH will nominate one independent director who is selected by HCMLP and will nominate the other independent director after consultation with HCMLP and other significant public shareholders.

<sup>4</sup> A majority of CCC IVs equity interest in CCC ultimately will be held by affiliates and associated investors of T.H. Lee and Bain in the form of non-voting, non-attributable stock in CCMH, but any such investment will not reduce the approximately 71.6% voting control by CCC IV in CCMH.

(1)	(2)	(3)	(4)	(5)
Mays, Mark P.	U.S.	Director/CEO/COO	0%	<1%
Mays, Randall T.	U.S.	Director/President/CFO	0%	<1%
Barnes, Stephen W. c/o Bain Capital Investors, LLC	U.S.	Director	0%	<1%
Connaughton, John P. c/o Bain Capital Investors, LLC	U.S.	Director	0%	<1%
Han, Edward J. c/o Bain Capital Investors, LLC	U.S.	Director	0%	<1%
Loring, Ian K. c/o Bain Capital Investors, LLC	U.S.	Director	0%	<1%
Bressler, Richard J. c/o Thomas H. Lee Partners	U.S.	Director	0%	<1%
Brizius, Charles A. c/o Thomas H. Lee Partners	U.S.	Director	0%	<1%
Sperling, Scott M. c/o Thomas H. Lee Partners	U.S.	Director	0%	<1%
Weldon, Kent R. c/o Thomas H. Lee Partners	U.S.	Director	0%	<1%
Abrams, David c/o Joseph F. Mazzella	U.S.	Director	0%	<1%
Jacobson, Jonathon c/o Joseph F. Mazzella	U.S.	Director	0%	<1%
Mays, L. Lowry	U.S.	Chairman Emeritus	0%	<1%
Hogan, John	U.S.	Senior Vice President	0%	0%
Cohen, Bob	U.S.	Senior Vice President	0%	0%
Meyer, Paul	U.S.	Senior Vice President	0%	0%
Levin, Andrew W.	U.S.	Executive VP, Chief Legal Officer, Secretary	0%	0%
Coleman, Brian	U.S.	Senior Vice President, Treasurer	0%	0%
Dan, Charles G., III	U.S.	Senior Vice President, Real Estate	0%	0%
Hamersly, Bill	U.S.	Senior Vice President, Human Resources	0%	0%
Hill, Herbert W., Jr.	U.S.	Senior Vice President, CAO, Assistant Secretary	0%	0%
Johnson, Kathryn Mays	U.S.	Senior Vice President, Corporate Relations	0%	0%
Marventano, Jessica	U.S.	Senior Vice President, Government Affairs	0%	0%
Palmer, Randy	U.S.	Senior Vice President, Investor Relations	0%	0%
Rosales, Stephanie	U.S.	Senior Vice President/ Corporate Accounting and Regulatory Compliance	0%	0%
Wilson, David E.	U.S.	Senior Vice President, Chief Information Officer	0%	0%
Bick, Scott	U.S.	Vice President, Domestic Tax	0%	0%
Eller, Dirk	U.S.	Senior VP, Corporate Development	0%	0%
Harrington, Chris	U.S.	Vice President, International Tax	0%	0%
Horan, Ace	U.S.	Vice President, Financial Systems	0%	0%
Peterson, Paul	U.S.	Vice President, Corporate Services	0%	0%
Shannon, Joe	U.S.	Vice President, Chief Technology Officer	0%	0%
Stich, Mary	U.S.	Vice President, Associate General Counsel	0%	0%
Newsom, Hamlet T., Jr.	U.S.	Assistant Secretary	0%	0%
Dollinger, Lisa	U.S.	Chief Communications Officer	0%	0%

The ownership and control of **Clear Channel Capital IV, LLC**, which holds 71.6% of the voting stock of Clear Channel Media Holdings, Inc., is as follows:

(1)	(2)	(3)	(4) <sup>5</sup>	(5)
Bain Capital (CC) IX, L.P. c/o Bain Capital Investors, LLC	DE LP	Member	50%	50%
Thomas H. Lee Equity Fund VI, L.P. c/o Thomas H. Lee Partners	DE LP	Member	50%	50%
Barnes, Stephen W.	U.S.	Member, Board of Managers	0%	0%
Connaughton, John P.	U.S.	Member, Board of Managers	0%	0%
Han, Edward J.	U.S.	Member, Board of Managers	0%	0%
Loring, Ian K.	U.S.	Member, Board of Managers	0%	0%
Bressler, Richard J.	U.S.	Member, Board of Managers	0%	0%
Brizius, Charles A.	U.S.	Member, Board of Managers	0%	0%
Sperling, Scott M.	U.S.	Member, Board of Managers	0%	0%
Weldon, Kent R.	U.S.	Member, Board of Managers	0%	0%

The ownership and control of **Bain Capital (CC) IX, L.P.**, which has a 50% interest in Clear Channel Capital IV, LLC is as follows:

(1)	(2)	(3)	(4)	(5)
Bain Capital Partners (CC) IX, L.P. c/o Bain Capital Investors, LLC	DE LP	General Partner	100%	<1%
Insulated Limited Partners	--	Insulated Limited Partners	0%	>99%

The ownership and control of **Bain Capital Partners (CC) IX, L.P.**, which controls Bain Capital (CC) IX, L.P., is as follows:

(1)	(2)	(3)	(4)	(5)
Bain Capital Investors, LLC	DE LLC	General Partner	100%	<1%
Limited Partners	--	Limited Partners <sup>6</sup>	0%	>99%

<sup>5</sup> Each member of the eight-member board of managers has one vote, with half the members appointed by Bain and half by T.H. Lee. Any action by the board of managers requires a majority vote of those managers present, with at least one vote from a Bain representative and one vote from a T.H. Lee representative.

<sup>6</sup> The limited partners of Bain Capital Partners (CC) IX, L.P. are individuals identified as managing directors or members of Bain Capital Investors, LLC, related entities such as family trusts established by such individuals, and investment funds created for the benefit of employees of affiliates of Bain Capital Investors, LLC.

The ownership and control of **Bain Capital Investors, LLC**, which controls Bain Capital Partners (CC) IX, L.P. is as follows:

(1)	(2)	(3)	(4) <sup>7</sup>	(5)
Balson, Andrew B. c/o Bain Capital Investors, LLC	U.S.	Managing Director, Member	7.69%	<10%
Barnes, Stephen W.	U.S.	Managing Director, Member	7.69%	<10%
Bekenstein, Joshua c/o Bain Capital Investors, LLC	U.S.	Managing Director, Member	7.69%	<10%
Connaughton, John P.	U.S.	Managing Director, Member	7.69%	<10%
Edgerley, Paul B. c/o Bain Capital Investors, LLC	U.S.	Managing Director, Member	7.69%	<10%
Hitch, S. Jordan c/o Bain Capital Investors, LLC	U.S.	Managing Director, Member	7.69%	<10%
Levin, Matthew S. c/o Bain Capital Investors, LLC	U.S.	Managing Director, Member	7.69%	<10%
Loring, Ian K.	U.S.	Managing Director, Member	7.69%	<10%
Loughlin, Philip H. IV c/o Bain Capital Investors, LLC	U.S.	Managing Director, Member	7.69%	<10%
Nunnally, Mark E. c/o Bain Capital Investors, LLC	U.S.	Managing Director, Member	7.69%	<10%
Pagliuca, Stephen G. c/o Bain Capital Investors, LLC	U.S.	Managing Director, Member	7.69%	<10%
Ward, Michael c/o Bain Capital Investors, LLC	U.S.	Managing Director, Member	7.69%	<10%
Zide, Stephen M. c/o Bain Capital Investors, LLC	U.S.	Managing Director, Member	7.69%	<10%

The following members of Bain Capital Investors, LLC, although not insulated by the entity's limited liability company agreement, will not participate in the investment and disposition decisions of Bain Capital Investors, LLC.

(1)	(2)	(3)	(4) <sup>7</sup>	(5)
Agarwal, Ajay c/o Bain Capital Investors, LLC	U.S.	Member	0%	<10%
Albright, Richard C. c/o Bain Capital Investors, LLC	U.S.	Member	0%	<10%
Awad, Dewey J. c/o Bain Capital Investors, LLC	U.S.	Member	0%	<10%
Barns, Timothy c/o Bain Capital Investors, LLC	U.S.	Member	0%	<10%
Bevacqua, Michael c/o Bain Capital Investors, LLC	U.S.	Member	0%	<10%
Carter, Philip J.	U.S.	Member	0%	<10%

<sup>7</sup> Investment and disposition decisions by Bain Capital Investors, LLC are made by a majority vote of the 13 managing directors (as modified from time to time to reflect admissions and resignations), each of whom has a single vote, which equates currently to a voting interest with respect to such investment or disposition decisions of approximately 7.69 percent of the total vote. In the aggregate, the members of Bain Capital Investors, LLC own 100% of the ownership interests in that entity.



(1)	(2)	(3)	(4) <sup>7</sup>	(5)
c/o Bain Capital Investors, LLC				
Davies, Stuart c/o Bain Capital Investors, LLC	U.S.	Member	0%	<10%
DeSimone, Jonathan c/o Bain Capital Investors, LLC	U.S.	Member	0%	<10%
Exter, Diane J. c/o Bain Capital Investors, LLC	U.S.	Member	0%	<10%
Ferrante, Domenic J. c/o Bain Capital Investors, LLC	U.S.	Member	0%	<10%
Goldstein, Dennis c/o Bain Capital Investors, LLC	U.S.	Member	0%	<10%
Goodman, Jonathan c/o Bain Capital Investors, LLC	U.S.	Member	0%	<10%
Goss, Michael F. c/o Bain Capital Investors, LLC	U.S.	Member	0%	<10%
Gross-Loh, David c/o Bain Capital Investors, LLC	U.S.	Member	0%	<10%
Hawkins, Jeffrey c/o Bain Capital Investors, LLC	U.S.	Member	0%	<10%
Kellogg, James F. III c/o Bain Capital Investors, LLC	U.S.	Member	0%	<10%
Huang, Jingsheng c/o Bain Capital Investors, LLC	U.S.	Member	0%	<10%
Krupka, Michael A. c/o Bain Capital Investors, LLC	U.S.	Member	0%	<10%
Lavine, Jonathan S. c/o Bain Capital Investors, LLC	U.S.	Member	0%	<10%
McCarthy, David c/o Bain Capital Investors, LLC	U.S.	Member	0%	<10%
McPherron, Matthew P. c/o Bain Capital Investors, LLC	U.S.	Member	0%	<10%
Moore, Mark c/o Bain Capital Investors, LLC	U.S.	Member	0%	<10%
More, Anand c/o Bain Capital Investors, LLC	U.S.	Member	0%	<10%
Mugford, Kristin W. c/o Bain Capital Investors, LLC	U.S.	Member	0%	<10%
Nahirny, James J. c/o Bain Capital Investors, LLC	U.S.	Member	0%	<10%
Nye, Benjamin c/o Bain Capital Investors, LLC	U.S.	Member	0%	<10%
Pappendick, William E. IV c/o Bain Capital Investors, LLC	U.S.	Member	0%	<10%
Poler, Dwight M. c/o Bain Capital Investors, LLC	U.S.	Member	0%	<10%
Reynolds, Ian c/o Bain Capital Investors, LLC	U.S.	Member	0%	<10%
Riehl, Peter W. c/o Bain Capital Investors, LLC	U.S.	Member	0%	<10%
Rudisch, Douglas J. c/o Bain Capital Investors, LLC	U.S.	Member	0%	<10%
Sarkis, S. Walid c/o Bain Capital Investors, LLC	U.S.	Member	0%	<10%
Schwartz, Jeffrey M.	U.S.	Member	0%	<10%

(1)	(2)	(3)	(4) <sup>7</sup>	(5)
c/o Bain Capital Investors, LLC				
Toussaint, John c/o Bain Capital Investors, LLC	U.S.	Member	0%	<10%
Wolin, Steven c/o Bain Capital Investors, LLC	U.S.	Member	0%	<10%
Woolbert, Jeffrey c/o Bain Capital Investors, LLC	U.S.	Member	0%	<10%
Biffar, Ulrich c/o Bain Capital Investors, LLC	Germany <sup>8</sup>	Member	0%	<10%
Chandra, Amit c/o Bain Capital Investors, LLC	India	Member	0%	<10%
Hildebrandt, James H. c/o Bain Capital Investors, LLC	Canada	Member	0%	<10%
Merry del Val, Felipe c/o Bain Capital Investors, LLC	Italy	Member	0%	<10%
Plantevin, Michel c/o Bain Capital Investors, LLC	France	Member	0%	<10%
Shiroshita, Junichi c/o Bain Capital Investors, LLC	Japan	Member	0%	<10%
Siefke, Michael c/o Bain Capital Investors, LLC	Germany	Member	0%	<10%
Sugimoto, Yuji c/o Bain Capital Investors, LLC	Japan	Member	0%	<10%
Zhu, Jonathan c/o Bain Capital Investors, LLC	HKSAR	Member	0%	<10%

The ownership and control of **Thomas H. Lee Equity Fund VI, L.P.**, which has a 50% interest in Clear Channel Capital IV, LLC is as follows:

(1)	(2)	(3)	(4)	(5)
THL Equity Advisors VI, LLC c/o Thomas H. Lee Partners	DE LLC	General Partner	100%	<1%
Insulated Limited Partners	U.S.	Insulated Limited Partners	0%	>99%

The ownership and control of **THL Equity Advisors VI, LLC**, which controls Thomas H. Lee Equity Fund VI, L.P is as follows:

(1)	(2)	(3)	(4)	(5)
Thomas H. Lee Partners, L.P. c/o Thomas H. Lee Partners	DE LP	Sole Member	100%	100%

<sup>8</sup> Each foreign Member is insulated with respect to Bain Capital Investors, LLC's investment in CCC. None will have any material involvement, directly or indirectly, in the management or operation of the media-related activities of CCC.

The ownership and control of **Thomas H. Lee Partners, L.P.**,<sup>9</sup> which controls THL Equity Advisors VI, LLC is as follows:

(1)	(2)	(3)	(4)	(5)
Thomas H. Lee Advisors, LLC c/o Thomas H. Lee Partners	DE LLC	General Partner	100%	<1%
Abbrecht, Todd M. c/o Thomas H. Lee Partners	U.S.	Limited Partner, Managing Director of General Partner	0%	<10%
Brizius, Charles A.	U.S.	Limited Partner, Managing Director of General Partner	0%	<10%
DiNovi, Anthony J. c/o Thomas H. Lee Partners	U.S.	Limited Partner, Managing Director of General Partner	0%	<10%
Hagerty, Thomas M. c/o Thomas H. Lee Partners	U.S.	Limited Partner, Managing Director of General Partner	0%	<10%
Jaeckel, Scott L.. c/o Thomas H. Lee Partners	U.S.	Limited Partner, Managing Director of General Partner	0%	<10%
Lawry, Seth W. c/o Thomas H. Lee Partners	U.S.	Limited Partner, Managing Director of General Partner	0%	<10%
Schoen, Scott A. c/o Thomas H. Lee Partners	U.S.	Limited Partner, Managing Director of General Partner	0%	<10%
Sperling, Scott M.	U.S.	Limited Partner, Managing Director of General Partner	0%	<10%
Weldon, Kent R.	U.S.	Limited Partner, Managing Director of General Partner	0%	<10%
Alexandrov, Alex c/o Thomas H. Lee Partners	U.S.	Limited Partner	0%	<10%
Berman, Beverly c/o Thomas H. Lee Partners	U.S.	Limited Partner	0%	<10%
Bresler, Joshua c/o Thomas H. Lee Partners	U.S.	Limited Partner	0%	<10%
Bressler, Richard J.	U.S.	Limited Partner	0%	<10%
Carlisle, James C. c/o Thomas H. Lee Partners	U.S.	Limited Partner	0%	<10%
Covell, Margaret c/o Thomas H. Lee Partners	U.S.	Limited Partner	0%	<10%
DeLaite, Alexandra c/o Thomas H. Lee Partners	U.S.	Limited Partner	0%	<10%
Holden, Charles P. c/o Thomas H. Lee Partners	U.S.	Limited Partner	0%	<10%
McClellan, John c/o Thomas H. Lee Partners	U.S.	Limited Partner	0%	<10%
Nelson, Joshua M. c/o Thomas H. Lee Partners	U.S.	Limited Partner	0%	<10%
Pesce, Joseph F. c/o Thomas H. Lee Partners	U.S.	Limited Partner	0%	<10%
Prasad, Dhruv c/o Thomas H. Lee Partners	U.S.	Limited Partner	0%	<10%

<sup>9</sup> The limited partners of Thomas H. Lee Partners, L.P. also include trusts or family limited partnerships established as estate planning vehicles by individuals who are listed in the table as limited partners of this entity. Collectively, the Managing Directors of Thomas H, Lee Partners, L.P. hold a majority of the ownership of the limited partnership.

(1)	(2)	(3)	(4)	(5)
Rao, Ganesh B. c/o Thomas H. Lee Partners	U.S.	Limited Partner	0%	<10%
Sharma, Vivek c/o Thomas H. Lee Partners	U.S.	Limited Partner	0%	<10%
Swenson, Jeff T. c/o Thomas H. Lee Partners	U.S.	Limited Partner	0%	<10%
Taylor, George R. c/o Thomas H. Lee Partners	U.S.	Limited Partner	0%	<10%
White, Gregory A. c/o Thomas H. Lee Partners	U.S.	Limited Partner	0%	<10%
Wolkon, Shari c/o Thomas H. Lee Partners	U.S.	Limited Partner	0%	<10%
Boll, C. Hunter* <sup>10</sup> c/o Thomas H. Lee Partners	U.S.	Limited Partner	0%	<10%
Harkins, David V.* c/o Thomas H. Lee Partners	U.S.	Limited Partner	0%	<10%
Lee, Thomas H.* c/o Thomas H. Lee Partners	U.S.	Limited Partner	0%	<10%
Mullen, Terrence M.* c/o Thomas H. Lee Partners	U.S.	Limited Partner	0%	<10%
Smith, Warren C. Jr.* c/o Thomas H. Lee Partners	U.S.	Limited Partner	0%	<10%
Insulated Limited Partners	--	Insulated Limited Partners	0%	<33%

The ownership and control of **Thomas H. Lee Advisors, LLC**, which controls Thomas H. Lee Partners, L.P. is as follows:

(1)	(2)	(3)	(4) <sup>11</sup>	(5)
Abbrecht, Todd M.	U.S.	Managing Director	11%	<10%
Brizius, Charles A.	U.S.	Managing Director	11%	<10%
DiNovi, Anthony J.	U.S.	Managing Director	11%	<10%
Hagerty, Thomas M.	U.S.	Managing Director	11%	<10%
Jaeckel, Scott L..	U.S.	Managing Director	11%	<10%
Lawry, Seth W.	U.S.	Managing Director	11%	<10%
Schoen, Scott A.	U.S.	Managing Director	11%	<10%
Sperling, Scott M.	U.S.	Managing Director	11%	<10%
Weldon, Kent R.	U.S.	Managing Director	11%	<10%
Alexandrov, Alex	U.S.	Member	0%	<10%

<sup>10</sup> The Limited Partners denoted by asterisks do not participate in the investments of Thomas H. Lee Equity Fund VI, L.P., the entity that holds a 50% interest in CCC IV, through their interest in Thomas H. Lee Partners, L.P.

<sup>11</sup> Thomas H. Lee Advisors, LLC is governed by a majority vote of its Managing Directors, each of whom has a single vote, with certain categories of major decisions requiring a two-thirds majority and the concurrence of two of the three Co-Presidents. Collectively, the Managing Directors of Thomas H. Lee Advisors, LLC hold a majority of the ownership of the LLC. The members of Thomas H. Lee Advisors, LLC also include trusts and family limited partnerships established as estate planning vehicles of individuals who are members of the LLC.

(1)	(2)	(3)	(4) <sup>11</sup>	(5)
Berman, Beverly	U.S.	Member	0%	<10%
Bresler, Joshua	U.S.	Member	0%	<10%
Bressler, Richard J.	U.S.	Member	0%	<10%
Carlisle, James C.	U.S.	Member	0%	<10%
Covell, Margaret	U.S.	Member	0%	<10%
DeLaite, Alexandra	U.S.	Member	0%	<10%
Holden, Charles P.	U.S.	Member	0%	<10%
McClellan, John	U.S.	Member	0%	<10%
Nelson, Joshua M.	U.S.	Member	0%	<10%
Pesce, Joseph F.	U.S.	Member	0%	<10%
Prasad, Dhruv	U.S.	Member	0%	<10%
Rao, Ganesh B.	U.S.	Member	0%	<10%
Sharma, Vivek	U.S.	Member	0%	<10%
Swenson, Jeff T.	U.S.	Member	0%	<10%
Taylor, George R.	U.S.	Member	0%	<10%
White, Gregory A.	U.S.	Member	0%	<10%
Wolkon, Shari	U.S.	Member	0%	<10%
Boll, C. Hunter <sup>*12</sup>	U.S.	Member	0%	0%
Harkins, David V.*	U.S.	Member	0%	0%
Lee, Thomas H.*	U.S.	Member	0%	0%
Mullen, Terrence M.*	U.S.	Member	0%	0%
Smith, Warren C. Jr.*	U.S.	Member	0%	0%
Insulated Members	--	Members	0%	<33%

The ownership and control of **Highfields Capital Management LP**, the investment manager of several funds that each hold less than 5% of the voting stock of CCMH, is as follows:

(1)	(2)	(3)	(4) <sup>13</sup>	(5)
Highfields GP, LLC c/o Joseph F. Mazzella	DE LLC	Sole General Partner	100%	<5%
Alam, Shakeeb c/o Joseph F. Mazzella	U.S.	Limited Partner	0%	<5%
Berstein, Michael c/o Joseph F. Mazzella	U.S.	Limited Partner	0%	<5%
Botein, Matthew c/o Joseph F. Mazzella	U.S.	Limited Partner	0%	<5%
Farb, Daniel <sup>14</sup>	Canada	Limited Partner	0%	<5%

<sup>12</sup> The Members denoted by asterisks will not have an ownership interest in CCC through Thomas H. Lee Advisors, LLC.

<sup>13</sup> CCMH has a board of directors composed of 12 members of which 2, or 16.7%, are elected by its public shareholders. CCMH will nominate one independent director who is selected by HCMLP and will nominate the other independent director after consultation with HCMLP and any other significant public shareholders.

<sup>14</sup> Mr. Farb will have no material involvement with respect to decisions involving HCMLP's investment in CCMH.

(1)	(2)	(3)	(4) <sup>13</sup>	(5)
c/o Joseph F. Mazzella				
Flanagan, Joseph c/o Joseph F. Mazzella	U.S.	Limited Partner	0%	<5%
Marcus, Kristin c/o Joseph F. Mazzella	U.S.	Limited Partner	0%	<5%
Mazzella, Joseph F. c/o Joseph F. Mazzella	U.S.	Limited Partner	0%	<5%
Montesano, Joseph c/o Joseph F. Mazzella	U.S.	Limited Partner	0%	<5%
Piliptcheck, Elena c/o Joseph F. Mazzella	U.S.	Limited Partner	0%	<5%
Sidman, Matthew c/o Joseph F. Mazzella	U.S.	Limited Partner	0%	<5%
Stier, Jennifer c/o Joseph F. Mazzella	U.S.	Limited Partner	0%	<5%
Grubman, Richard c/o Joseph F. Mazzella	U.S.	Limited Partner	0%	-- <sup>15</sup>
Jacobson, Jonathon	U.S.	Limited Partner	0%	--

The ownership and control of **Highfields GP, LLC**, which controls Highfields Capital Management LP is as follows:

(1)	(2)	(3)	(4)	(5) <sup>16</sup>
Grubman, Richard	U.S.	Managing Member	50%	--
Jacobson, Jonathon	U.S.	Managing Member	50%	--

<sup>15</sup> Messrs. Jacobson and Grubman together hold over 90% of the equity ownership of HCMLP.

<sup>16</sup> Messrs. Jacobson and Grubman each exercise negative control of Highfields GP, LLC and together hold 100% of its equity interests.

### Figure 1

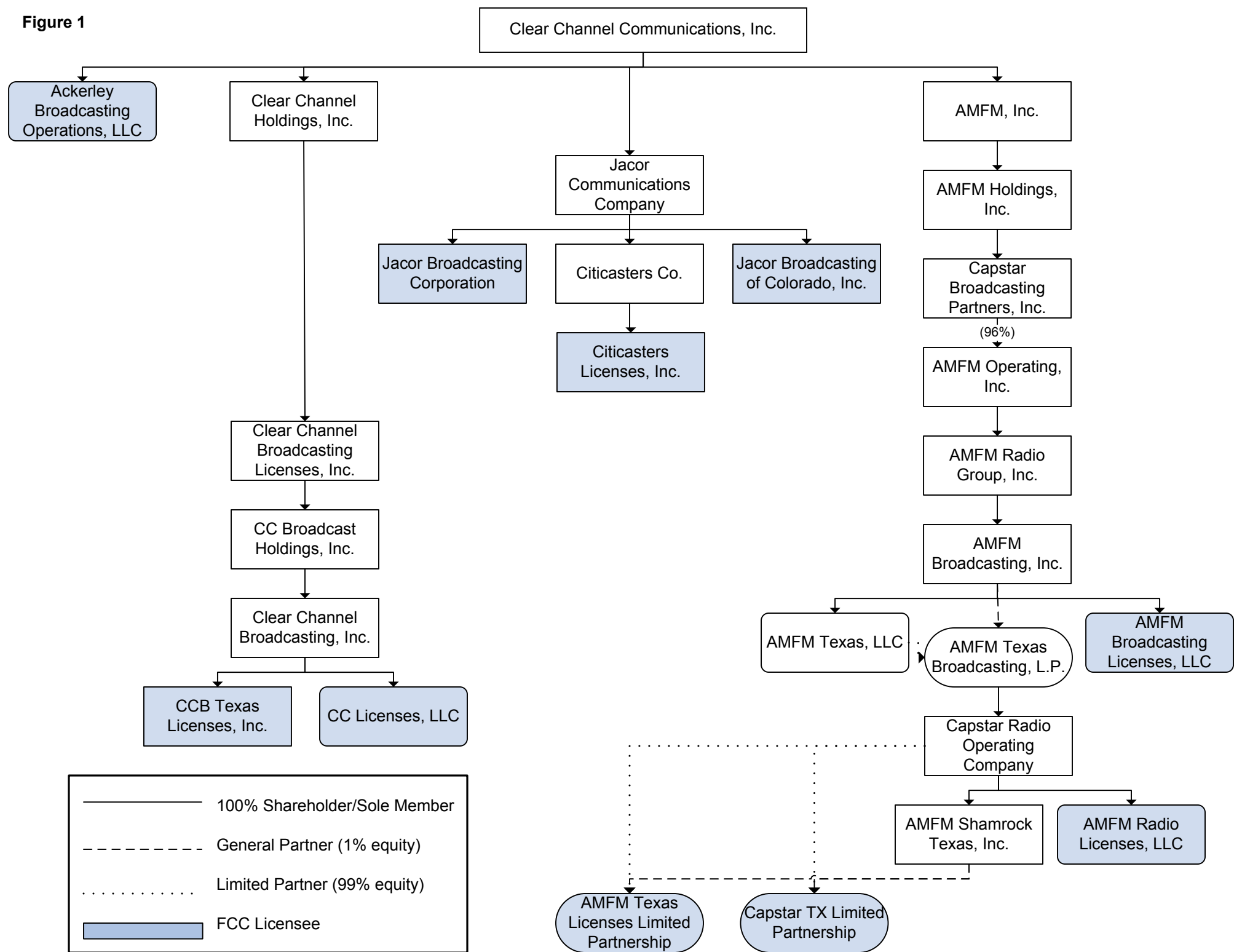
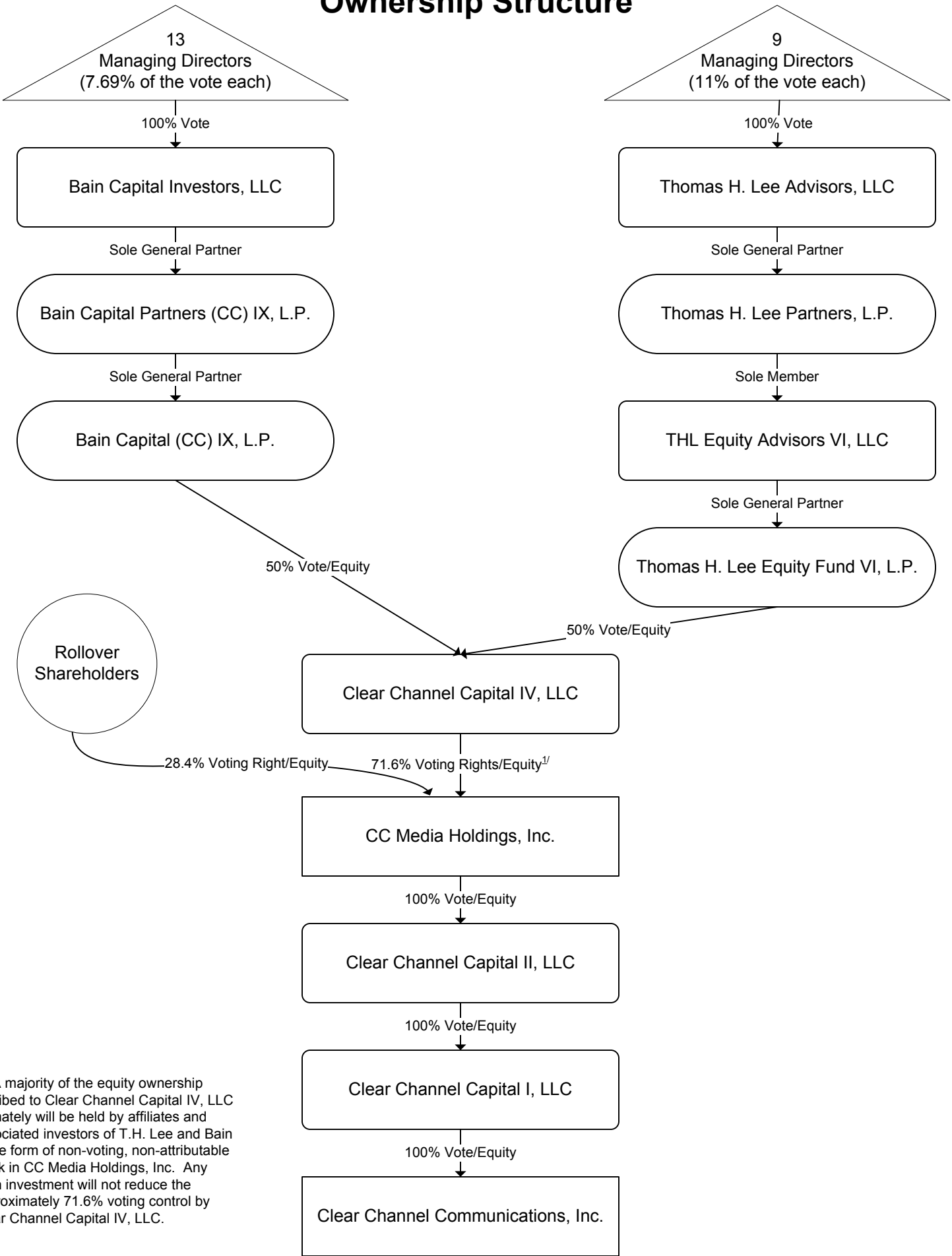


Figure 3

# Clear Channel Communications, Inc. Ownership Structure



<sup>1/</sup> A majority of the equity ownership ascribed to Clear Channel Capital IV, LLC ultimately will be held by affiliates and associated investors of T.H. Lee and Bain in the form of non-voting, non-attributable stock in CC Media Holdings, Inc. Any such investment will not reduce the approximately 71.6% voting control by Clear Channel Capital IV, LLC.