

## **EXHIBIT 12 – TECHNICAL EXHIBIT & WAIVER REQUEST OF 74.1204**

Applicant desires to establish FM Translator K237FD as a “**Fill-in**” translator for full-service facility KPMD, FID # 94097 Evanston, WY.

Let it be known that all relevant coverage/contour calculations were accomplished using the NED 03 SEC terrain database.

### **Contour Overlap Study**

The following study (**Figure 1**) of nearby facilities reveals the lack of conflict with any relevant 1<sup>st</sup>, 2<sup>nd</sup>, or 3<sup>rd</sup> adjacent authorizations or applications with the exception of full-service FM station KMGR(CP), Randolph, UT. There is also a close relationship with FM translator Application, FID # 146317, Garden City, UT.

### **With regard to KMGR(CP)**

The proposed FM translator is located within the protected 60 dBu F(50,50) contour of 3<sup>rd</sup> adjacent KMGR(CP), Randolph, UT. The predicted 60 dBu F(50,50) field strength of KMGR(CP) at the proposed translator site is 78.5 dBu (free space equation). Using the Undesired-to-Desired method for calculating proposed interference, the proposed interfering contour with respect to KMGR(CP) is 118.5 dBu (78.5 + 40) (free space contour method employed). This interfering signal would, in the worst case, at the maximum radial, extend 52.6 meters from the antenna.

The interference area described above is located in an unpopulated area at an established communications site on a remote mountaintop. Any structures in the immediate area house communications equipment only, and have no regular human occupancy.

To further support this waiver request, an interference area represented by a circle with a radius of 53 meters around the proposed site has been plotted on a section of the 7.5 min USGS **EVANSTON** (USGS) Topographical Map (see **Figure 2**). In addition the 118.5 dBu F(50,10) interference contour has been plotted on a recent aerial photo to illustrate the absence of any newer development in the area (see **Figure 3**).

Since no population inhabits the interference area, the Applicant respectfully requests waiver of the FM translator contour overlap requirement with respect to 3<sup>rd</sup> adjacent facility KMGR(CP).

K237FD Minor Modification											
Western Inspirational Broadcasters, Inc.											
REFERENCE	CH# 237D - 95.3 MHz, Pwr= 0.04 kW DA, HAAT= 467.3 M, COR= 2637 M								DISPLAY DATES		
41 21 12.2 N.	Average Protected F(50-50)= 39.6 km								DATA 04-16-13		
110 54 29.0 W.	Standard Directional								SEARCH 04-20-13		
CH	CALL	TYPE	ANT	AZI.	DIST	LAT.	Pwr(kw)	INT(km)	PRO(km)	*IN*	*OUT*
CITY			STATE	<--	FILE #	LNG.	HAAT(M)	COR(M)	LICENSEE	(Overlap	in km)
237D	K237FD	LIC	DV	0.0	0.00	41 21 12.2	0.011	30.1	8.4	-42.3*	-50.5*
Evanston			WY	0.0	BLFT20120117ACC	110 54 29.0		2637	Western Inspirational Broa		
240C	KMGR	CP	HX	187.8	54.11	40 52 16.0	89.000	15.9	99.2	19.7	-45.5*
Randolph			UT	7.7	BPH20080409ACT	110 59 43.0	647	3330	Slc Divestiture Trust Li (		
238C1	KYFO-FM	LIC	CN	264.5	111.54	41 14 59.0	100.000	97.0	65.8	-4.6	17.3
Ogden			UT	83.6	BLFD19981125KD	112 14 11.0	219	1509	Bible Broadcasting Network		
237D	1547261	APP	C	333.1	66.04	41 52 57.0	0.070	45.3	13.6	6.6	0.1
Garden City			UT	152.8	BNPFT20130325ALT	111 16 09.0		2321	Sun Valley Radio, Inc.		
236C	KYCS	LIC	CY	82.5	131.41	41 29 50.0	100.000	115.7	78.1	2.7	34.3
Rock Springs			WY	263.5	BLH19861015KA	109 20 36.0	355	2371	wagonwheel Communications		
237D	K237AL	LIC	HN	214.9	90.62	40 40 59.0	0.016	38.6	9.9	36.6	13.3
Park City, Etc.			UT	34.5	BLFT19840307MV	111 31 22.0		2276	Radio License Holding Cbc,		
236D	638896	APP	DC	332.3	64.39	41 51 57.0	0.250	28.7	19.4	19.9	22.8
Garden City			UT	152.1	BNPFT20030314ART	111 16 09.0	330	2321	Sun Valley Radio, Inc.		
237C	KZJH	LIC	CN	3.1	234.68	43 27 40.0	100.000	186.0	82.7	36.3	112.4
Jackson			WY	183.2	BLH19890714KA	110 45 09.0	322	2474	Rp Broadcasting Ls, Llc		
235C	KHTB	LIC	CY	216.4	147.15	40 16 58.0	48.000	12.5	96.0	115.0	50.4
Provo			UT	35.7	BLH19801219AI	111 56 11.0	853	2359	Radio License Holding Cbc,		
238D	K238AS	LIC	DV	208.6	100.01	40 33 44.0	0.218	5.2	2.9	75.2	61.7
Heber City			UT	28.2	BLFT20041203AEE	111 28 30.0	381	2564	wasatch County Commission		
236D	631104	APP	C	283.8	114.54	41 35 30.0	0.230	32.6	21.9	62.8	64.2
Corinne			UT	102.9	BNPFT20030310BJQ	112 14 45.0	262	1585	Utah State University Of A		
236D	639034	APP	DC	292.2	118.19	41 44 54.0	0.250	35.5	21.2	65.3	64.2
Tremonton			UT	111.4	BNPFT20030314ARG	112 13 37.0	303	1765	Sun Valley Radio, Inc.		
240C3	KLZX	LIC	CX	307.9	94.46	41 52 18.0	25.000	2.3	22.7	74.2	66.8
Weston			ID	127.3	BMLH20070117AAI	111 48 31.0	66	1750	Sun Valley Radio Inc		
238D	KYFO-FM1	LIC	DV	233.9	102.17	40 48 29.0	0.007	3.0	2.2	79.9	67.6
Salt Lake City			UT	53.3	BLFTB20080513ABV	111 53 22.0		1843	Bible Broadcasting Networ		
240D	KLZX-FM1	LIC	DC	292.2	118.19	41 44 54.0	5.000	3.4	39.4	96.0	69.1
Tremonton			UT	111.4	BLFTB20050901ACY	112 13 37.0		1760	Sun Valley Radio, Inc.		
237C3	AL2442	RSV-A		177.6	194.08	39 36 33.0	25.000	99.8	22.7	75.9	96.3
Price			UT	357.7	RM11365	110 48 50.0	100	1964			
238C2	KFMR	LIC	C	131.4	136.11	40 32 16.0	0.890	34.4	23.0	87.3	85.2
Ballard			UT	312.2	BLH20080418ABR	109 41 57.0	506	2637	Cochise Media Licenses Llc		
239D	K239AY	LIC	C	343.9	112.03	42 19 15.0	0.115	0.8	5.8	96.6	103.0
Montpelier			ID	163.6	BLFT20080305AEV	111 17 12.0	-86	1885	Bear Lake County Translato		

Terrain database is NED 03 SEC, R= 73.215 qualifying spacings or FCC minimum spacings in KM, M= Margin in KM  
In & Out distances between contours are shown at closest points. Reference Zone= West Zone, Co to 3rd adjacent.  
All separation margins (if shown) include rounding  
Ant Column: (D= DA Standard, Z= DA 73.215, N= Not DA 73.215, \_= Omni), Polarization (C,H,V,E), Beamtilt(Y,N,X)  
"\*"affixed to 'IN' or 'OUT' values = site inside protected contour.

Figure 1

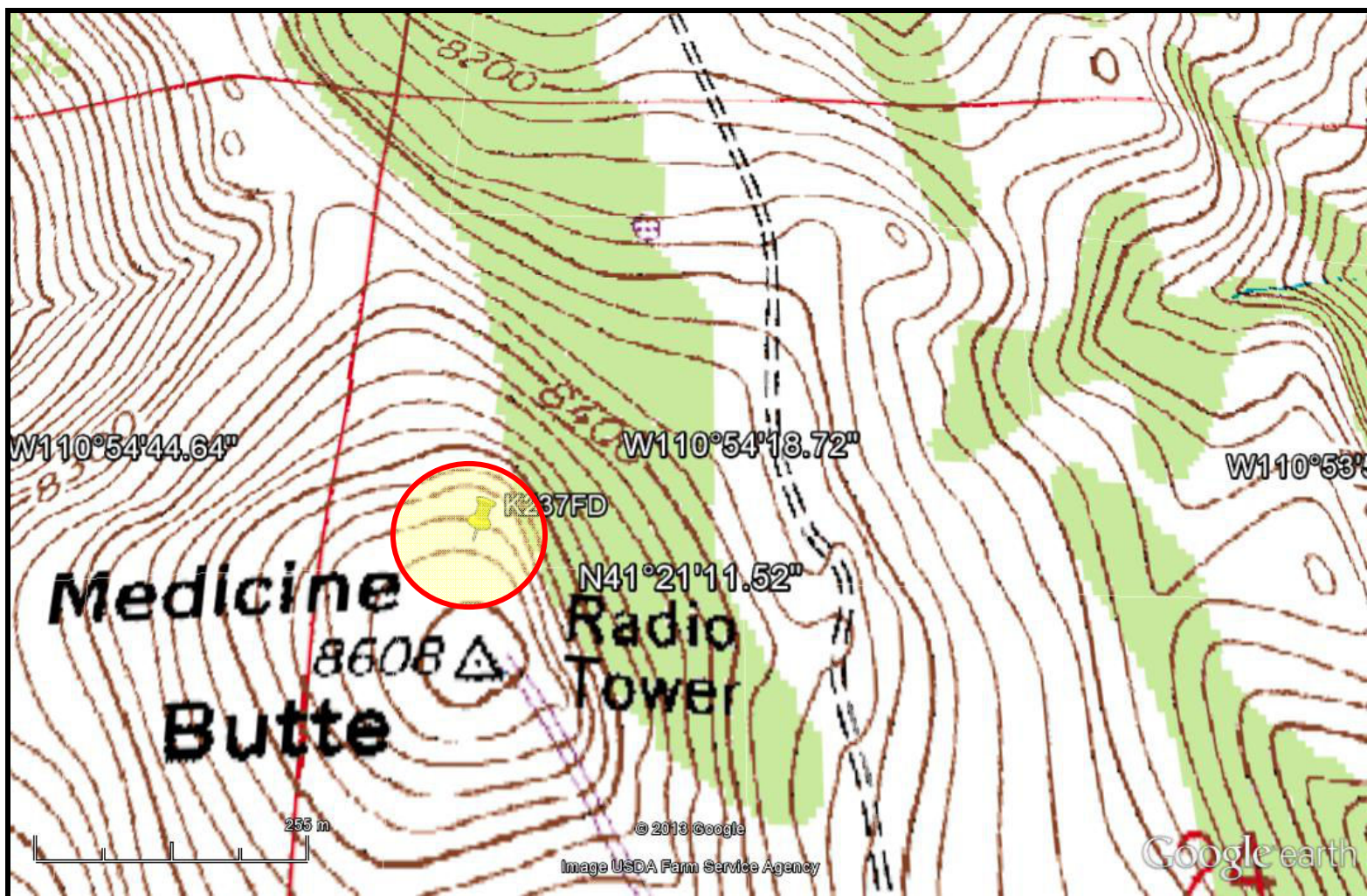
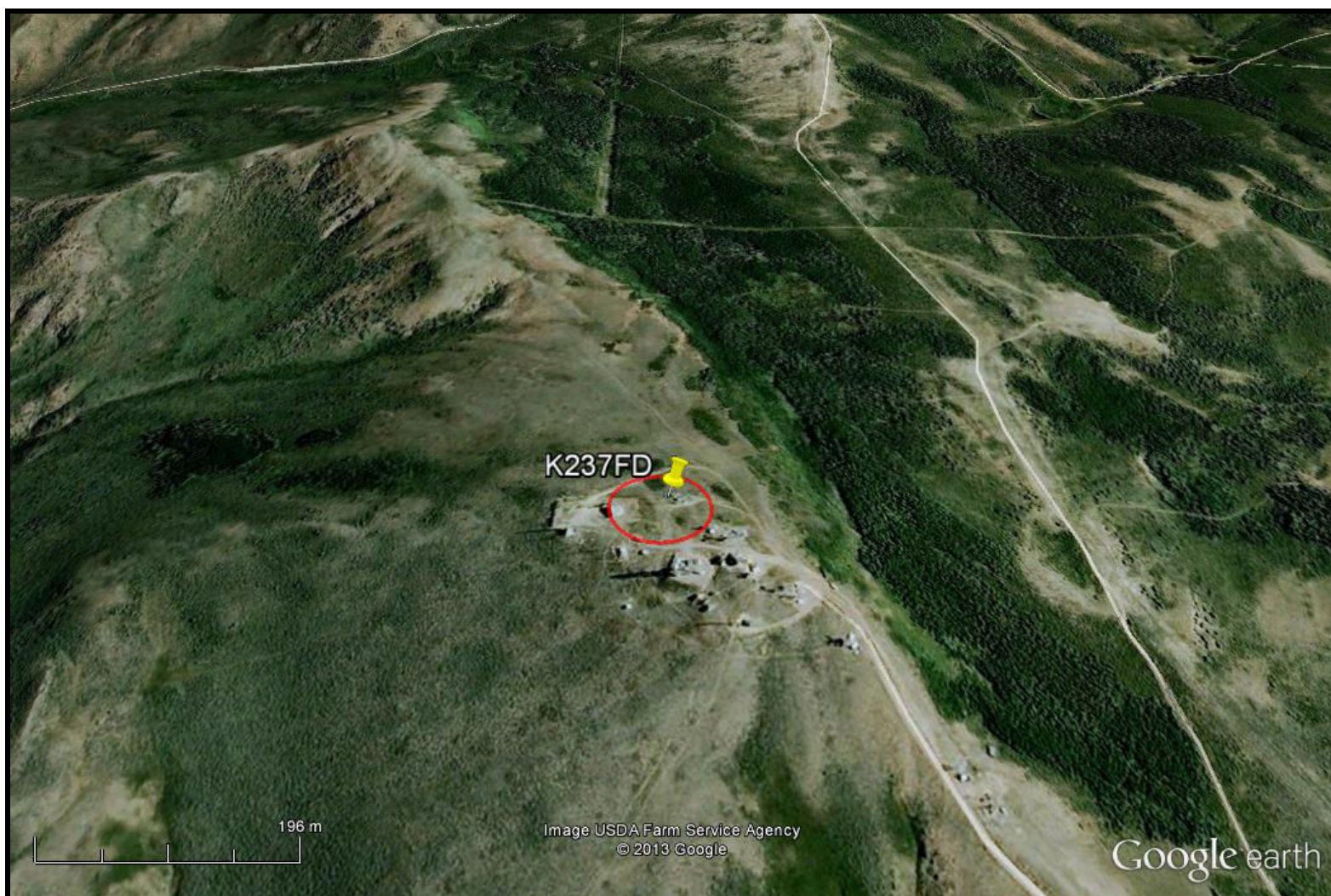


Figure 2





**Figure 3**

**With respect to FM translator Application, FID # 146317, Garden City, UT**

The close contour relationship FM translator Application, FID # 146317, Garden City, UT is shown in **Figure 4**, explored in an expanded manner in **Figure 5**, and reveals the lack of any contour overlap.

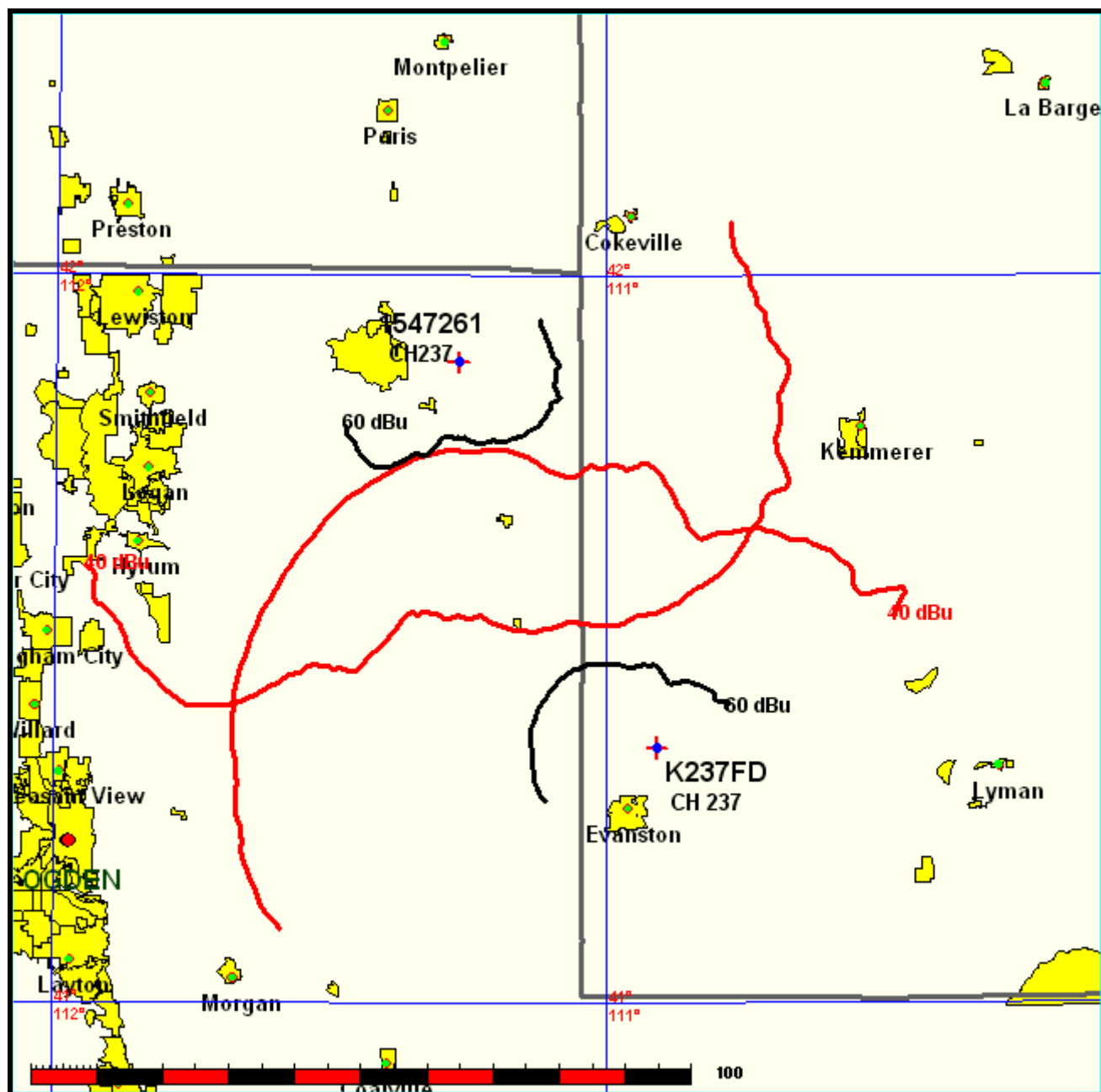


Figure 4

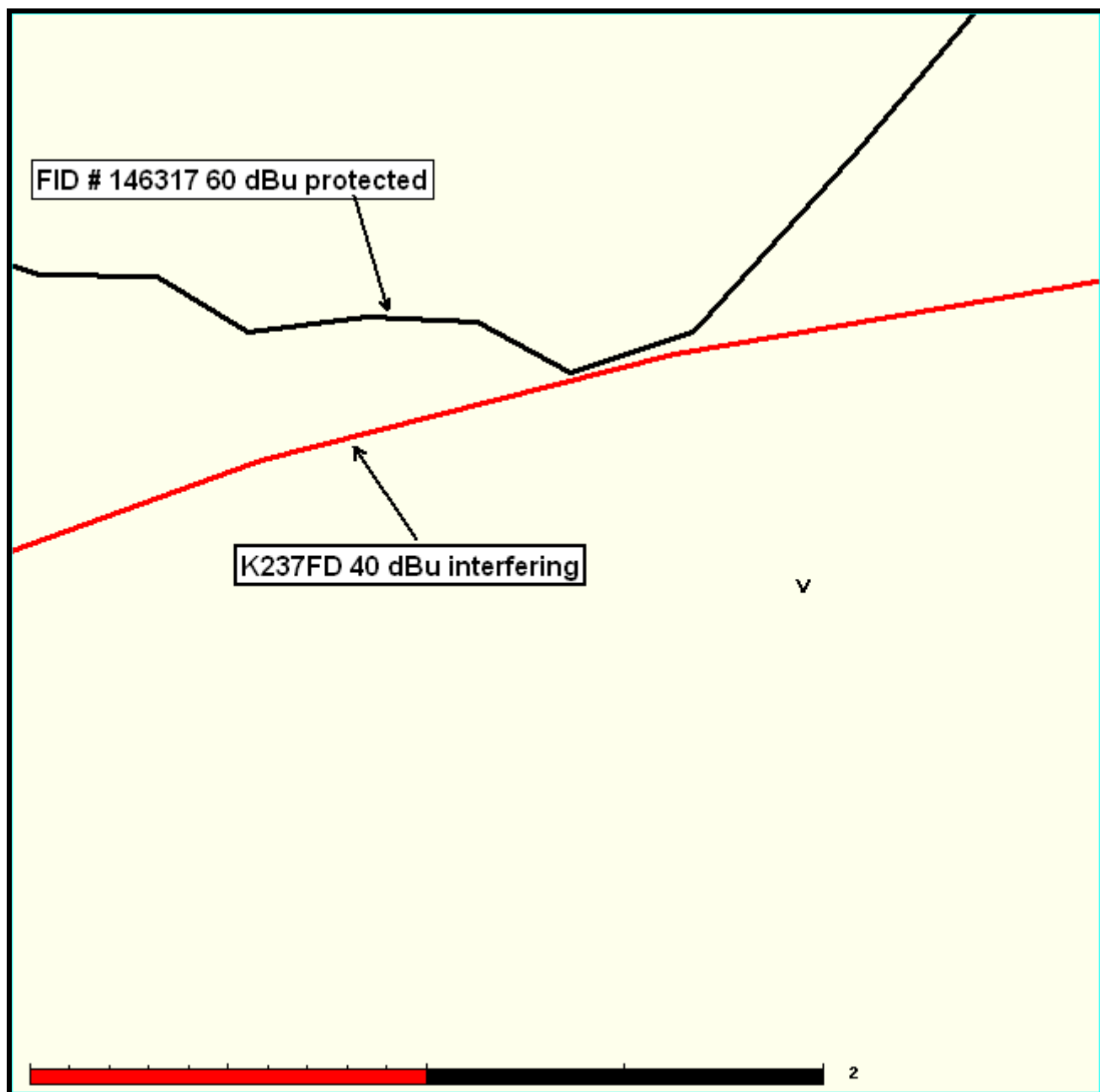


Figure 5

Proposed translator's 60 dBu contour is contained completely within the licensed primary KPMD 60 dBu contour.

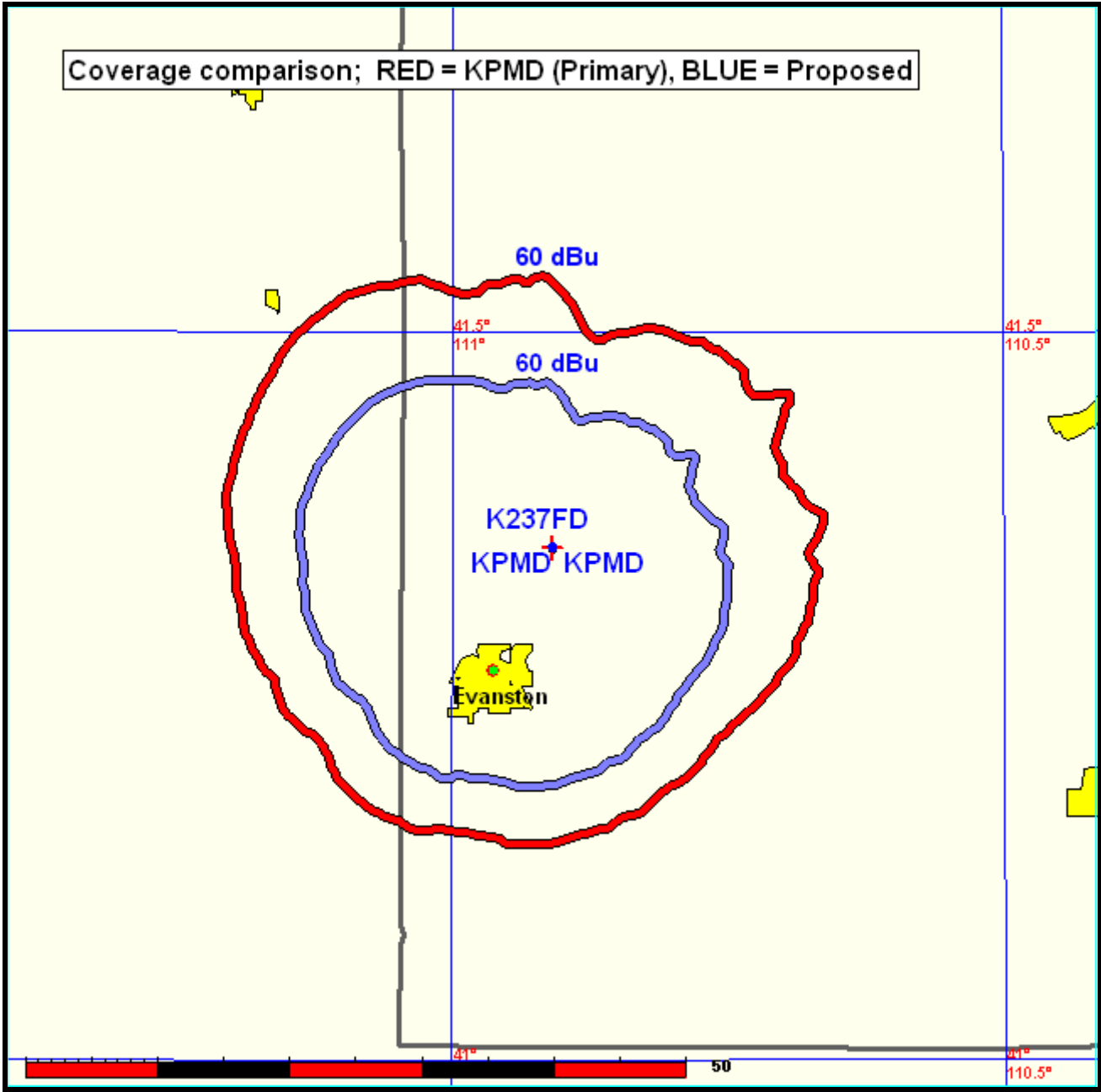


Figure 6