

**TECHNICAL EXHIBIT  
CONSTRUCTION PERMIT MODIFICATION  
KEZG (FM)  
CALICO ROCK, ARKANSAS  
CH 246 C3      5.2KW (MAX-DA)      218M HAAT**

Technical Narrative

Malvern Entertainment Corporation ("Malvern") hereby seeks a Modification of its Construction Permit (File # BNPH-20041216AEM) to specify a new site and technical parameters. The proposed facility will operate with a power of 5.2 kW at 218m HAAT. The proposed facility is fully spaced to all stations, allotments, and applications, with the exception of KXUS, Springfield, MO and KUPH, Mountain View, MO. Malvern proposes a directional antenna to provide contour protection for those stations.

All calculations herein were made using RF Investigator-FM version 2.6.15. The antenna will be mounted on a 106.4 meter tower (FCC Registration #1250397.) It is believed that this proposal conforms to all applicable rules and regulations of the FCC.

Proposed Transmitter Location

A map showing the transmitter site location is provided in Figure 1. Malvern proposes use of a directional 2-bay antenna mounted at 100.8m above ground level. The transmitter site is uniquely described as: 36-05-31 N / 92-15-46 W (NAD27). As can be noted from the topo map in Figure 1 (and according to the Antenna Structure

Registration), the site lies at 353.6m AMSL. Thus, the Center of Radiation Above Mean Sea Level will be 454.4m.

### Interference Concerns

The 115 dBu predicted “blanketing” contour will extend approximately 2 km from the transmitting site. There are fewer than six households within the blanketing contour. Applicant recognizes its responsibility to resolve complaints of interference, including blanketing and receiver-induced interference as required by Sections 73.315(b), 73.316(e), and 73.318.

### Coverage Contours

The predicted coverage contours for the proposed operation were calculated by employing the USGS 03-second terrain database in accordance with Section 73.313. The average terrain elevations from 3 to 16 kilometers along 8 radials evenly spaced at 45-degree intervals were obtained from the USGS 03-second terrain database. Figure 2 shows the height above average terrain data. The average elevation was calculated at 236.0 meters. Because the transmitter site lies at 353.6 meters above sea level, it is 117.6 meters above average terrain. With the antenna center of radiation at 100.8 meters above ground level, that places the HAAT at 218.4 meters ( $117.6 + 100.8$ ), which rounds to 218 meters.

The terrain elevations were then used in combination with the effective radiated power and relative field values for determining the distance to the coverage contours. Figure 3 shows the distance to contour values using 360 evenly spaced radials.

A contour coverage map is shown in Figure 4. The FCC predicted 70 dBu coverage contour encompasses 100% of the Calico Rock, Arkansas city limits, thus establishing compliance with the community coverage requirement. Figure 5 is a line of sight graph from the proposed site to the community of license.

#### Allocation Study

Figure 6 is an allocation study for Channel 246 C3 at the proposed site. The proposed site meets the FCC's minimum separation requirements in accordance with Section 73.207(b) to all assignments and stations with the exception of KXUS, Springfield, MO and KUPH, Mountain View, MO. Section 73.215 processing is requested toward KXUS and KUPH. The actual separation distance to KXUS is 139.2km; the minimum fully-spaced separation distance is 144km; the minimum short-spaced separation distance is 133km. The actual separation distance to KUPH is 108.3km; the minimum fully-spaced separation distance is 117km; the minimum short-spaced separation distance is 106km. Therefore, Malvern qualifies for short-spaced processing. Figure 7 is a short-spaced contour study, showing the predicted Protected and Interfering contours of KEZG (FM), KXUS and KUPH. It is clear from Figure 7 that there will be no overlap between the 54dBu Interfering Contour of KEZG (FM) and the 60dBu Protected Contour of KXUS and KUPH. Figure 8-A is a "zoom-in" on the area of concern which demonstrates that

there will be no overlap between the 60dBu Protected Contour of KEZG (FM) and the 54dBu Interfering Contour of KUPH. Figure 8-B is a “zoom-in” on the area of concern which demonstrates that there will be no overlap between the 60 dBu Protected Contour of KEZG (FM) and the 54dBu Interfering Contour of KXUS. Figure 9 is the numerical distance to contour output for the assumed maximum facilities of KXUS. Figure 10 is the numerical distance to contour output for the assumed maximum facilities of KUPH. Both Figures 9 and 10 assume maximum facilities for their respective classes since both stations are authorized pursuant to 73.207. The contours were determined by calculating all 360 radials using 3-second terrain data.

#### Directional Antenna

Malvern proposes to employ a directional antenna in order to protect KUPH and KXUS as discussed above. Figure 11 shows the directional antenna values utilized in all related maps herein. Figure 12 is a relative field pattern.

#### Environmental Considerations

The proposed facility has been evaluated in terms of potential radiofrequency electromagnetic field exposure at ground level in accordance with OST Bulletin No. 65, *Evaluating Compliance with FCC Specified Guidelines for Human Exposure to Radiofrequency Electromagnetic Fields*. The power density at the base of the tower was calculated using the appropriate procedure contained in Section 2, Supplement A,

*Additional Information for Radio and Television Broadcast Stations*, of the Bulletin. For the calculation, a combined horizontal and vertical polarized effective radiated power of 10.4 kilowatts is employed with a radiation center of 100.8 meters above ground level. A Shively 6800 series 2 bay one-wavelength spaced antenna is proposed. Using this antenna type in the Commission's *FM Model* RFR calculation program, it is calculated that the maximum power density at ground level resulting from this facility is less than 5  $\mu\text{W}/\text{cm}^2$ . (See Figure 13.) This is less than three percent of the maximum Commission guideline value in an uncontrolled environment for a FM radio station. There are no other known emitters in the nearby vicinity. Access to the transmitting site will be restricted and appropriately marked with warning signs. When it becomes necessary for workers to ascend the tower, appropriate measures, such as reduction or shut down of power if necessary, shall be taken to ensure that the human exposure to radiofrequency radiation will not exceed the FCC guidelines.

Should there be any questions regarding this application, please contact the undersigned.

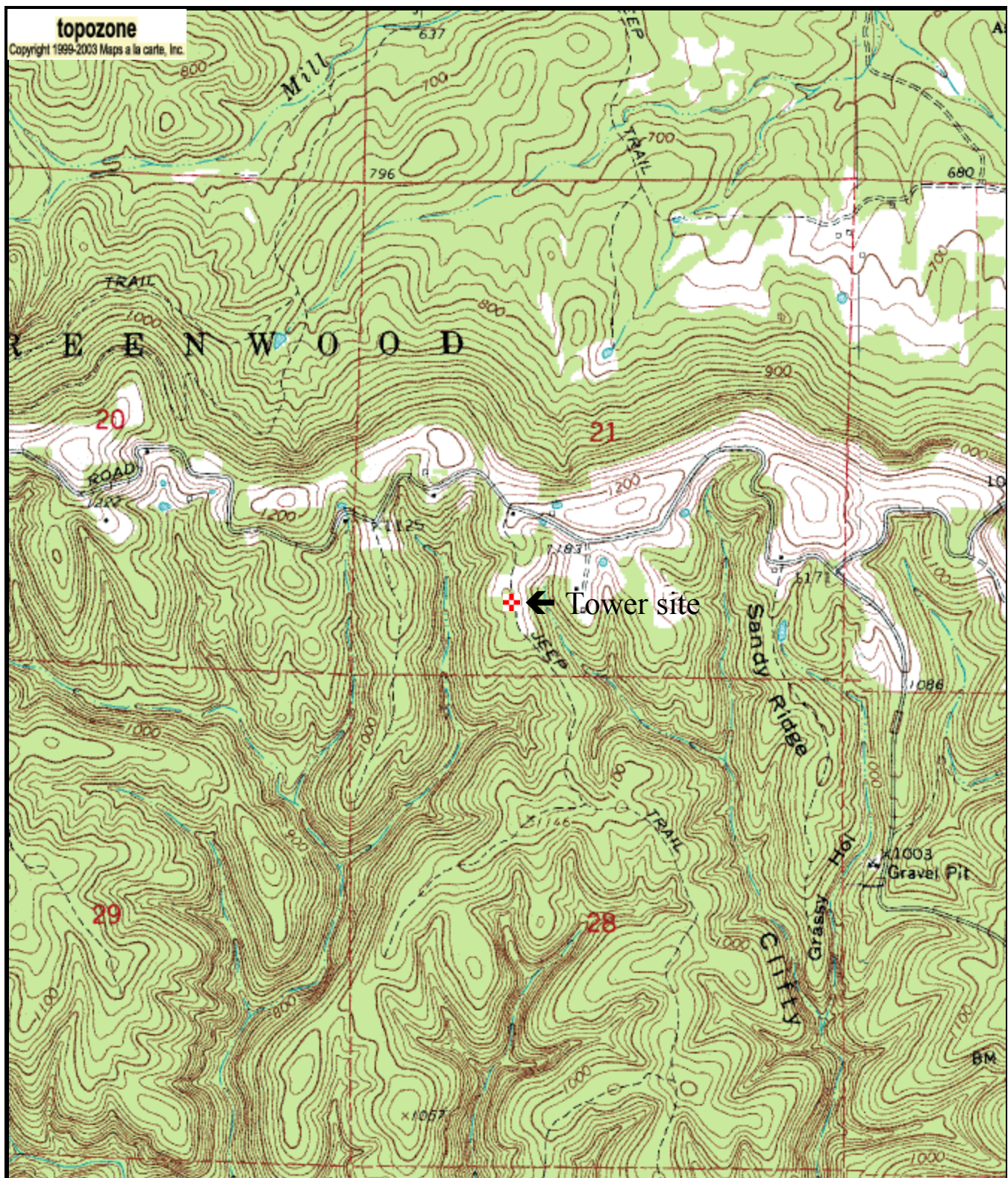


Scott A. Gray

October 13, 2005

Gray Media Corporation  
1031 Hickory Creek Drive  
Alexander, AR 72002  
501.794.2731  
scott@graymediacorp.com

FIGURE 1: Facility Location



Map center is 36° 05' 31"N, 92° 15' 46"W (NAD27)

**Norfolk SE** quadrangle

Projection is UTM Zone 15 NAD83 Datum

M=1.578  
G=0.434

KEZG (FM)  
Channel 246 C3  
Calico Rock, AR

Figure 2  
Terrain Data

KEZG (FM)	Site Latitude 36-05-31 N	Site Longitude 92-15-46 W	Radials Used 8
-----------	-----------------------------	------------------------------	-------------------

Site Elevation: 353.6m	Rad Center: 454.4m AMSL	Data Source: USGS 3-Sec DEM(DMA)
---------------------------	----------------------------	-------------------------------------

Bearing Degrees <u>True</u>	Average Height 3.0 to 16.0 km <u>meters</u>	Antenna Height HAAT <u>meters</u>	Min Height AMSL <u>meters</u>	Max Height AMSL <u>meters</u>
0	170.9	283.5	102.7	213.0
45	175.6	278.8	99.8	213.6
90	164.0	290.4	95.4	232.1
135	270.7	183.7	152.0	360.9
180	262.3	192.1	213.0	304.0
225	323.4	131.0	243.0	389.4
270	289.3	165.1	127.0	365.0
315	231.7	222.7	113.5	335.3
Average 8 radials:	236.0	218.4		

KEZG (FM)  
Ch 246 C3  
Calico Rock, Arkansas

Figure 3:  
Distances to Relevant Contours

'ID' KEZG (FM)		'Site Latitude' 36-05-31 N		'Site Longitude' 92-15-46 W	
'Antenna' Directional		'Radials Used' 360		'Antenna AMSL' 454.4	
				ERP (kW) 5.2	
'Bearing'	70dBu (F 50:50) 'To-Contour (km)'	60dBu (F 50:50) 'To-Contour (km)'	54 dBu (F 50:10) 'To-Contour (km)'	Height of Average Terrain (m)	'HAAT (meters)'
0	19.185	33.120	49.819	170.914	283.486
1	19.083	32.959	49.467	169.036	285.364
2	18.826	32.535	48.827	171.670	282.730
3	18.523	32.039	48.256	175.521	278.879
4	18.257	31.593	47.678	178.365	276.035
5	18.045	31.251	47.188	179.513	274.887
6	17.906	31.031	46.717	179.228	275.172
7	17.702	30.706	46.235	180.744	273.656
8	17.499	30.387	45.896	182.152	272.248
9	17.394	30.224	45.541	180.778	273.622
10	17.195	29.913	45.207	182.062	272.338
11	17.053	29.692	44.930	183.820	270.580
12	16.867	29.407	44.701	186.821	267.579
13	16.701	29.160	44.424	189.190	265.210
14	16.687	29.138	44.197	187.224	267.176
15	16.595	29.002	43.893	187.444	266.956
16	16.707	29.166	43.845	181.644	272.756
17	16.691	29.142	43.713	179.441	274.959
18	16.568	28.958	43.646	180.343	274.057
19	16.492	28.843	43.531	179.883	274.517
20	16.450	28.776	43.488	178.422	275.978
21	16.512	28.870	43.511	175.359	279.041
22	16.583	28.976	43.497	172.034	282.366
23	16.528	28.893	43.465	172.475	281.925
24	16.436	28.752	43.502	174.076	280.324
25	16.435	28.749	43.486	172.888	281.512
26	16.405	28.701	43.444	172.765	281.635
27	16.392	28.679	43.492	172.097	282.303
28	16.341	28.600	43.508	172.589	281.811
29	16.363	28.633	43.535	170.798	283.602
30	16.488	28.829	43.591	165.686	288.714
31	16.652	29.081	43.694	163.524	290.876
32	16.854	29.387	43.829	160.168	294.232
33	16.901	29.459	43.987	161.642	292.758
34	16.757	29.238	43.919	169.049	285.351
35	16.700	29.153	44.098	173.560	280.840
36	16.773	29.264	44.368	175.982	278.418
37	16.894	29.446	44.788	176.908	277.492
38	16.961	29.548	44.939	179.354	275.046
39	17.086	29.744	45.129	179.996	274.404
40	17.272	30.034	45.410	178.811	275.589
41	17.421	30.269	45.634	177.736	276.664
42	17.575	30.508	45.960	176.526	277.874
43	17.737	30.767	46.257	175.112	279.288
44	17.876	30.988	46.596	174.337	280.063



KEZG (FM)  
Ch 246 C3  
Calico Rock, Arkansas

Figure 3:  
Distances to Relevant Contours

45	17.944	31.096	46.956	175.581	278.819
46	18.082	31.312	47.210	178.100	276.300
47	18.113	31.353	47.306	183.559	270.841
48	18.276	31.614	47.663	185.031	269.369
49	18.458	31.913	48.106	185.828	268.572
50	18.554	32.065	48.346	188.970	265.430
51	18.666	32.239	48.560	192.266	262.134
52	18.777	32.412	48.773	195.393	259.007
53	19.143	33.011	49.609	191.441	262.959
54	19.467	33.540	50.348	188.466	265.934
55	19.846	34.148	51.236	183.997	270.403
56	20.263	34.814	52.153	179.022	275.378
57	20.622	35.380	52.935	175.556	278.844
58	20.947	35.882	53.631	173.021	281.379
59	21.278	36.394	54.380	170.166	284.234
60	21.598	36.885	55.101	167.546	286.854
61	21.970	37.443	55.867	164.305	290.095
62	22.363	38.037	56.726	160.293	294.107
63	22.728	38.576	57.511	157.073	297.327
64	23.037	39.027	58.191	155.344	299.056
65	23.329	39.451	58.835	153.939	300.461
66	23.572	39.801	59.297	154.523	299.877
67	23.772	40.080	59.680	156.213	298.187
68	24.025	40.437	60.189	156.361	298.039
69	24.253	40.760	60.643	157.020	297.380
70	24.466	41.062	61.094	157.908	296.492
71	24.796	41.520	61.755	156.685	297.715
72	25.181	42.060	62.521	153.955	300.445
73	25.584	42.624	63.386	150.668	303.732
74	26.004	43.200	64.273	147.111	307.289
75	26.389	43.735	65.095	144.203	310.197
76	26.547	43.951	65.634	144.435	309.965
77	26.671	44.114	66.080	145.524	308.876
78	26.790	44.271	66.486	146.649	307.751
79	26.857	44.356	66.269	148.950	305.450
80	26.952	44.481	66.121	150.535	303.865
81	27.048	44.615	66.331	148.297	306.103
82	27.003	44.552	66.232	149.348	305.052
83	26.789	44.257	65.766	154.315	300.085
84	26.774	44.237	65.734	154.654	299.746
85	26.846	44.335	65.889	153.000	301.400
86	26.979	44.518	66.179	149.914	304.486
87	26.905	44.416	66.017	151.635	302.765
88	26.780	44.245	65.747	154.518	299.882
89	26.535	43.908	65.220	160.115	294.285
90	26.367	43.669	64.850	164.027	290.373
91	26.144	43.351	64.356	169.213	285.187
92	25.907	43.016	63.834	174.673	279.727
93	25.657	42.664	63.293	180.339	274.061
94	25.447	42.368	62.837	185.110	269.290
95	25.295	42.151	62.504	188.606	265.794
96	25.294	42.150	62.504	188.614	265.786
97	25.292	42.147	62.498	188.668	265.732
98	25.338	42.213	62.599	187.608	266.792

KEZG (FM)  
Ch 246 C3  
Calico Rock, Arkansas

Figure 3:  
Distances to Relevant Contours

99	25.534	42.490	63.025	183.122	271.278
100	25.747	42.790	63.487	178.318	276.082
101	25.776	42.831	63.550	177.655	276.745
102	25.940	43.063	63.906	173.913	280.487
103	25.936	43.057	63.897	174.007	280.393
104	25.777	42.833	63.553	177.625	276.775
105	25.375	42.265	62.679	186.769	267.631
106	24.900	41.594	61.658	197.510	256.890
107	24.636	41.229	61.106	203.350	251.050
108	24.299	40.766	60.414	210.732	243.668
109	23.944	40.281	59.693	218.281	236.119
110	23.687	39.930	59.174	223.540	230.860
111	23.473	39.636	58.741	227.827	226.573
112	23.190	39.235	58.150	233.534	220.866
113	22.677	38.492	57.061	243.673	210.727
114	22.208	37.779	56.023	252.945	201.455
115	21.757	37.065	54.996	261.869	192.531
116	21.289	36.295	53.906	271.200	183.200
117	21.178	36.107	53.646	273.418	180.982
118	21.432	36.536	54.245	268.311	186.089
119	21.403	36.487	54.176	268.900	185.500
120	21.449	36.564	54.284	267.973	186.427
121	21.222	36.181	53.748	272.553	181.847
122	20.799	35.454	52.780	280.547	173.853
123	20.656	35.206	52.463	283.089	171.311
124	20.796	35.448	52.773	280.602	173.798
125	20.932	35.685	53.080	278.109	176.291
126	20.327	34.628	51.741	288.765	165.635
127	20.120	34.265	51.295	292.206	162.194
128	20.251	34.494	51.575	290.049	164.351
129	20.602	35.111	52.343	284.041	170.359
130	20.656	35.205	52.462	283.096	171.304
131	20.503	34.939	52.126	285.751	168.649
132	20.552	35.024	52.233	284.906	169.494
133	21.246	36.222	53.804	272.075	182.325
134	21.622	36.847	54.686	264.538	189.862
135	21.313	36.335	53.962	270.721	183.679
136	20.785	35.429	52.748	280.805	173.595
137	20.603	35.112	52.344	284.031	170.369
138	20.598	35.104	52.334	284.107	170.293
139	20.484	34.905	52.084	286.082	168.318
140	20.236	34.468	51.543	290.296	164.104
141	19.812	33.731	50.648	297.150	157.250
142	19.610	33.387	50.235	300.276	154.124
143	19.652	33.457	50.319	299.641	154.759
144	19.820	33.745	50.664	297.026	157.374
145	20.030	34.108	51.104	293.676	160.724
146	20.519	34.967	52.162	285.470	168.930
147	20.937	35.693	53.091	278.016	176.384
148	21.070	35.923	53.396	275.506	178.894
149	21.234	36.202	53.777	272.305	182.095
150	21.530	36.697	54.473	266.359	188.041
151	22.076	37.572	55.725	255.565	198.835
152	22.520	38.260	56.724	246.729	207.671

KEZG (FM)  
Ch 246 C3  
Calico Rock, Arkansas

Figure 3:  
Distances to Relevant Contours

153	22.566	38.328	56.822	245.840	208.560
154	22.537	38.285	56.760	246.405	207.995
155	22.514	38.251	56.710	246.849	207.551
156	22.615	38.401	56.928	244.879	209.521
157	22.575	38.342	56.842	245.659	208.741
158	22.571	38.336	56.834	245.729	208.671
159	22.610	38.393	56.916	244.984	209.416
160	22.616	38.403	56.931	244.851	209.549
161	22.558	38.317	56.807	245.980	208.420
162	22.432	38.127	56.529	248.476	205.924
163	22.385	38.055	56.424	249.412	204.988
164	22.444	38.145	56.556	248.236	206.164
165	22.355	38.008	56.356	250.013	204.387
166	22.253	37.849	56.125	252.052	202.348
167	22.461	38.170	56.592	247.907	206.493
168	22.749	38.598	57.217	242.252	212.148
169	23.009	38.976	57.770	237.133	217.267
170	23.249	39.320	58.275	232.342	222.058
171	23.193	39.240	58.157	233.466	220.934
172	23.022	38.994	57.796	236.886	217.514
173	23.063	39.053	57.883	236.065	218.335
174	23.084	39.083	57.926	235.656	218.744
175	22.884	38.794	57.504	239.613	214.787
176	22.520	38.261	56.724	246.725	207.675
177	22.349	37.998	56.342	250.135	204.265
178	22.218	37.794	56.046	252.751	201.649
179	22.022	37.487	55.603	256.628	197.772
180	21.734	37.028	54.942	262.335	192.065
181	21.539	36.713	54.495	266.173	188.227
182	21.423	36.520	54.222	268.500	185.900
183	21.265	36.254	53.849	271.693	182.707
184	21.091	35.959	53.444	275.106	179.294
185	21.069	35.920	53.393	275.535	178.865
186	21.104	35.980	53.473	274.863	179.537
187	21.156	36.069	53.594	273.857	180.543
188	21.207	36.156	53.714	272.842	181.558
189	21.271	36.265	53.864	271.564	182.836
190	21.394	36.472	54.155	269.079	185.321
191	21.432	36.534	54.243	268.327	186.073
192	21.413	36.503	54.199	268.698	185.702
193	21.404	36.488	54.178	268.881	185.519
194	21.412	36.501	54.196	268.726	185.674
195	21.295	36.304	53.919	271.092	183.308
196	21.078	35.935	53.413	275.367	179.033
197	20.822	35.492	52.830	280.145	174.255
198	20.541	35.004	52.208	285.102	169.298
199	20.502	34.937	52.124	285.768	168.632
200	20.343	34.656	51.774	288.502	165.898
201	20.227	34.453	51.525	290.439	163.961
202	20.581	35.075	52.297	284.401	169.999
203	20.750	35.367	52.669	281.439	172.961
204	20.574	35.063	52.282	284.518	169.882
205	20.424	34.800	51.953	287.106	167.294
206	20.363	34.691	51.818	288.164	166.236

KEZG (FM)  
Ch 246 C3  
Calico Rock, Arkansas

Figure 3:  
Distances to Relevant Contours

207	20.365	34.696	51.824	288.117	166.283
208	20.292	34.567	51.665	289.356	165.044
209	20.086	34.204	51.221	292.777	161.623
210	19.919	33.916	50.871	295.452	158.948
211	19.765	33.650	50.551	297.889	156.511
212	19.652	33.458	50.320	299.632	154.768
213	19.591	33.354	50.195	300.576	153.824
214	19.397	33.025	49.801	303.533	150.867
215	19.372	32.983	49.751	303.909	150.491
216	19.288	32.841	49.583	305.172	149.228
217	19.101	32.527	49.208	307.963	146.437
218	18.794	32.031	48.608	312.421	141.979
219	18.529	31.609	48.095	316.204	138.196
220	18.349	31.335	47.752	318.755	135.645
221	18.280	31.233	47.622	319.722	134.678
222	18.209	31.127	47.486	320.728	133.672
223	18.004	30.826	47.099	323.591	130.809
224	17.898	30.671	46.901	325.064	129.336
225	18.012	30.837	47.113	323.486	130.914
226	18.046	30.889	47.179	322.999	131.401
227	18.092	30.956	47.265	322.362	132.038
228	18.125	31.004	47.328	321.901	132.499
229	18.407	31.422	47.863	317.925	136.475
230	18.411	31.427	47.869	317.877	136.523
231	18.157	31.051	47.388	321.456	132.944
232	18.180	31.085	47.431	321.134	133.266
233	18.176	31.079	47.423	321.193	133.207
234	18.337	31.317	47.729	318.919	135.481
235	18.292	31.250	47.643	319.565	134.835
236	18.317	31.287	47.690	319.210	135.190
237	18.788	32.020	48.594	312.519	141.881
238	18.708	31.894	48.441	313.653	140.747
239	18.416	31.434	47.879	317.803	136.597
240	18.413	31.429	47.873	317.852	136.548
241	18.553	31.647	48.142	315.860	138.540
242	18.680	31.849	48.386	314.059	140.341
243	19.137	32.588	49.281	307.420	146.980
244	19.405	33.039	49.819	303.402	150.998
245	19.151	32.612	49.309	307.214	147.186
246	19.137	32.587	49.280	307.429	146.971
247	18.995	32.355	49.000	309.512	144.888
248	19.032	32.415	49.073	308.972	145.428
249	19.147	32.604	49.300	307.278	147.122
250	19.169	32.642	49.345	306.947	147.453
251	18.911	32.220	48.836	310.731	143.669
252	18.671	31.835	48.369	314.183	140.217
253	19.041	32.430	49.091	308.839	145.561
254	19.221	32.729	49.449	306.172	148.228
255	19.564	33.308	50.140	300.988	153.412
256	20.171	34.353	51.403	291.381	163.019
257	20.513	34.957	52.148	285.574	168.826
258	19.864	33.820	50.756	296.332	158.068
259	19.924	33.924	50.881	295.379	159.021
260	20.405	34.765	51.910	287.447	166.953

KEZG (FM)  
Ch 246 C3  
Calico Rock, Arkansas

Figure 3:  
Distances to Relevant Contours

261	19.795	33.702	50.612	297.420	156.980
262	18.967	32.309	48.945	309.924	144.476
263	18.713	31.902	48.450	313.585	140.815
264	18.707	31.892	48.439	313.667	140.733
265	18.377	31.377	47.805	318.356	136.044
266	18.136	31.020	47.348	321.750	132.650
267	18.834	32.095	48.684	311.852	142.548
268	19.934	33.941	50.901	295.227	159.173
269	20.484	34.906	52.084	286.076	168.324
270	20.297	34.575	51.675	289.275	165.125
271	20.059	34.159	51.166	293.201	161.199
272	19.950	33.970	50.936	294.957	159.443
273	19.992	34.042	51.023	294.290	160.110
274	19.341	32.930	49.689	304.378	150.022
275	19.343	32.934	49.693	304.346	150.054
276	20.412	34.778	51.926	287.320	167.080
277	21.198	36.140	53.692	273.031	181.369
278	21.715	36.998	54.900	262.698	191.702
279	21.685	36.949	54.829	263.303	191.097
280	20.970	35.749	53.165	277.412	176.988
281	20.295	34.572	51.671	289.307	165.093
282	20.504	34.940	52.128	285.734	168.666
283	20.979	35.766	53.187	277.235	177.165
284	20.417	34.787	51.936	287.236	167.164
285	19.677	33.500	50.371	299.249	155.151
286	19.147	32.604	49.300	307.282	147.118
287	18.968	32.311	48.947	309.910	144.490
288	18.837	32.099	48.690	311.811	142.589
289	18.334	31.313	47.723	318.964	135.436
290	18.545	31.635	48.127	315.969	138.431
291	18.934	32.255	48.879	310.410	143.990
292	18.687	31.860	48.399	313.962	140.438
293	18.319	31.291	47.695	319.175	135.225
294	18.513	31.584	48.065	316.425	137.975
295	18.716	31.906	48.456	313.545	140.855
296	19.052	32.447	49.111	308.686	145.714
297	19.390	33.014	49.788	303.633	150.767
298	20.224	34.446	51.517	290.500	163.900
299	20.580	35.074	52.295	284.415	169.985
300	20.653	35.201	52.456	283.141	171.259
301	20.440	34.828	51.987	286.838	167.562
302	20.517	34.964	52.158	285.499	168.901
303	20.785	35.428	52.747	280.809	173.591
304	21.117	36.002	53.503	274.619	179.781
305	21.395	36.473	54.156	269.069	185.331
306	21.443	36.557	54.672	264.659	189.741
307	21.719	37.006	55.238	255.645	198.755
308	21.639	36.881	54.961	253.606	200.794
309	21.512	36.682	54.574	252.447	201.953
310	21.629	36.869	54.766	246.285	208.115
311	21.752	37.062	55.041	239.113	215.287
312	21.885	37.262	55.355	231.487	222.913
313	21.830	37.177	55.253	227.554	226.846
314	21.378	36.485	54.299	232.047	222.353

KEZG (FM)  
Ch 246 C3  
Calico Rock, Arkansas

Figure 3:  
Distances to Relevant Contours

315	21.149	36.128	53.833	231.715	222.685
316	20.876	35.698	53.095	233.852	220.548
317	20.734	35.476	52.682	233.075	221.325
318	21.024	35.941	53.256	222.569	231.831
319	21.109	36.073	53.371	216.333	238.067
320	20.800	35.598	53.166	219.102	235.298
321	20.762	35.540	52.981	218.311	236.089
322	20.780	35.569	52.976	216.192	238.208
323	20.736	35.502	52.952	215.505	238.895
324	20.591	35.278	52.971	217.187	237.213
325	20.512	35.156	52.576	217.306	237.094
326	20.694	35.436	52.826	209.292	245.108
327	20.773	35.558	52.843	203.485	250.915
328	20.518	35.167	52.696	205.890	248.510
329	20.392	34.970	52.484	205.098	249.302
330	20.268	34.776	52.054	204.195	250.205
331	20.196	34.666	51.862	200.785	253.615
332	20.297	34.837	52.092	192.625	261.775
333	20.396	35.010	52.291	184.142	270.258
334	20.429	35.080	52.380	177.137	277.263
335	20.368	34.994	52.431	172.585	281.815
336	20.509	35.216	52.474	172.505	281.895
337	20.501	35.194	52.636	176.618	277.782
338	20.502	35.185	52.810	180.407	273.993
339	20.557	35.264	53.103	182.609	271.791
340	20.828	35.685	53.376	178.946	275.454
341	21.098	36.107	53.706	174.990	279.410
342	21.223	36.298	54.044	174.981	279.419
343	21.272	36.368	54.337	177.011	277.389
344	21.372	36.518	54.676	177.609	276.791
345	21.585	36.846	55.014	175.139	279.261
346	21.826	37.224	55.355	166.882	287.518
347	21.881	37.313	55.729	163.623	290.777
348	21.866	37.294	56.106	162.262	292.138
349	21.872	37.307	56.110	160.286	294.114
350	21.880	37.323	55.751	158.246	296.154
351	21.755	37.143	55.466	155.566	298.834
352	21.505	36.771	54.923	156.232	298.168
353	21.234	36.354	54.279	157.600	296.800
354	20.778	35.646	53.348	164.086	290.314
355	20.367	35.001	52.453	169.196	285.204
356	20.031	34.464	51.649	172.656	281.744
357	19.825	34.140	51.190	172.219	282.181
358	19.578	33.751	50.636	172.797	281.603
359	19.374	33.425	50.212	172.120	282.280

KEZG (FM) Ch 246 C3

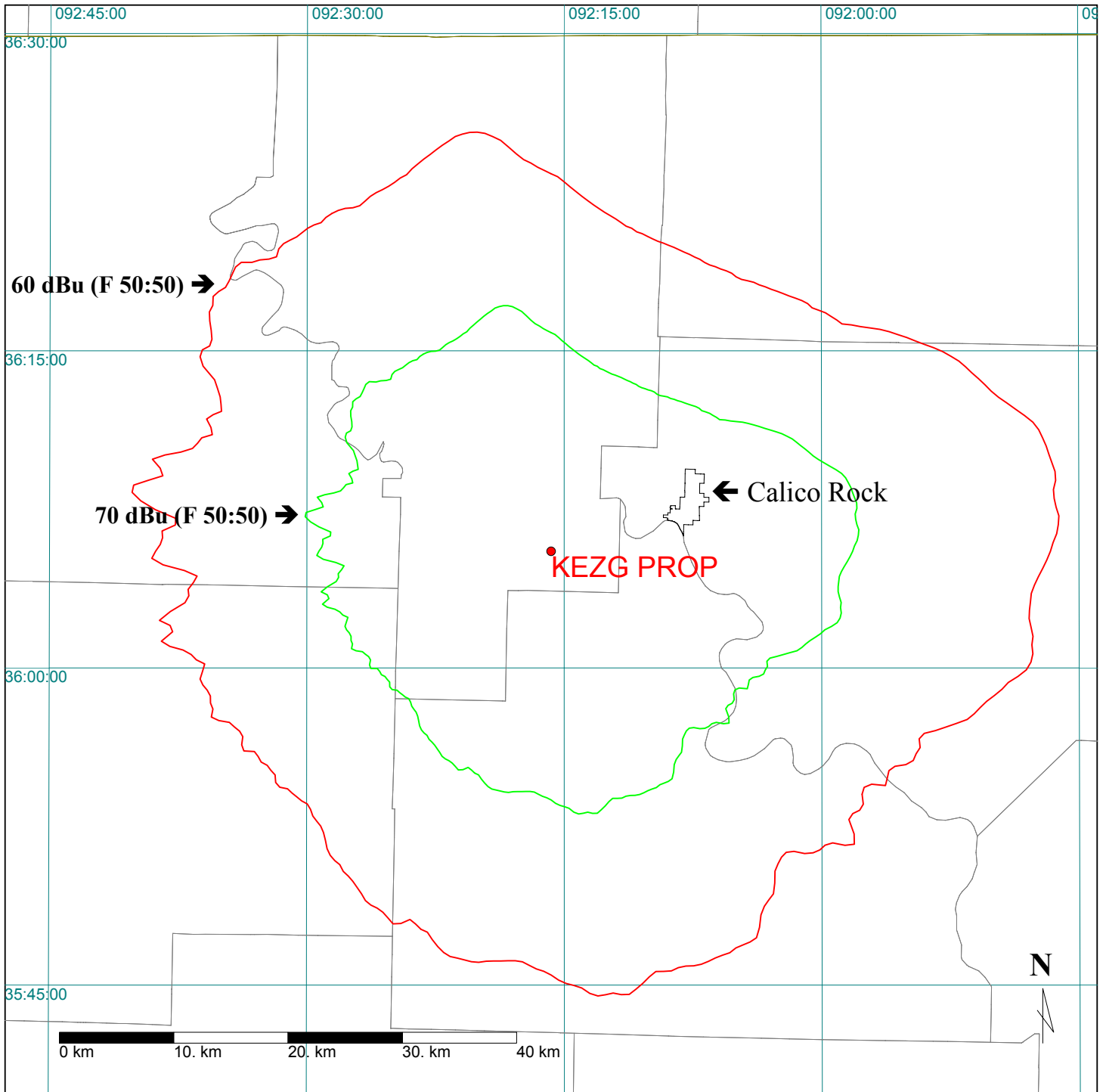
Calico Rock, AR

FIGURE 4

Proposed Contour Coverage Map

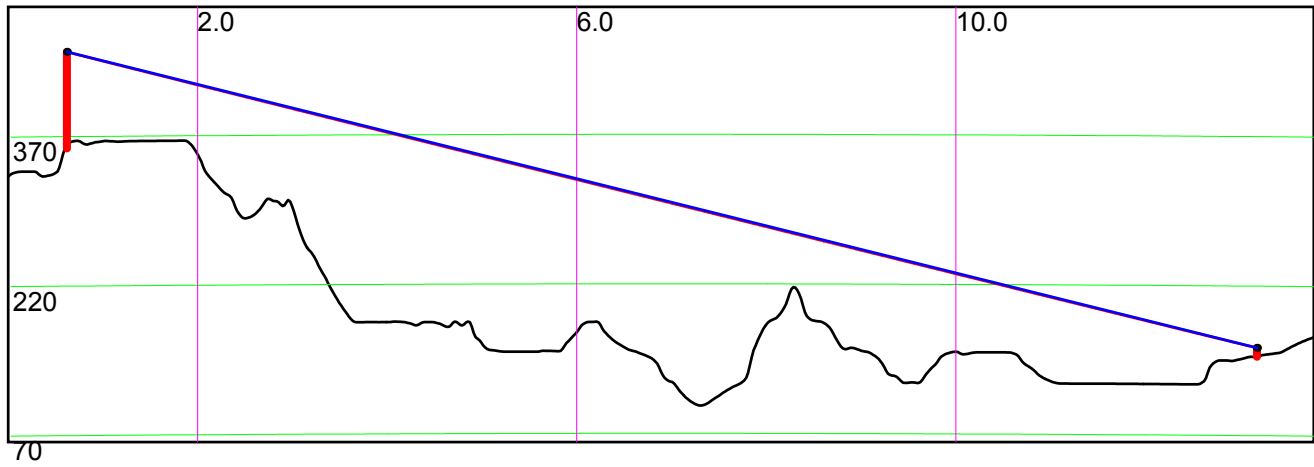
5.2kW (MAX-DA) @ 218m HAAT

36:05:31 N / 92:15:46 W



## FIGURE 5: Terrain Profile

Antenna to Community of License





KEZG (FM) - CH 246 C3  
Calico Rock, Arkansas

Allocation Study at  
Proposed Site

N 36:05:31 / W 92:15:46

Figure 6

Note	Callsign	Latitude (NAD27)	Longitude (NAD27)	City	State	Channel	Class	Status	Dist (km)	Req'd Min	Clearance	ERP	HAAT	Bearing
1	KEZG	N36:06:24	W092:18:53	CALICO ROCK	AR	246 : 97.1 MHz	C3	CP	0.0	153	-148.0	4.40	238	289
2	KUPH	N36:59:29	W091:47:41	MOUNTAIN VIEW	MO	245 : 96.9 MHz	C2	LIC	108.3	117	-8.7	50.00	150	23
3	KXUS	N37:11:10	W093:01:23	SPRINGFIELD	MO	247 : 97.3 MHz	C1	LIC	139.2	144	-4.8	100.00	177	331
	WHRK	N35:13:23	W090:02:33	MEMPHIS	TN	246 : 97.1 MHz	C1	LIC	223.0	211	12.0	100.00	162	116
	KOKR	N35:29:16	W091:26:13	NEWPORT	AR	244 : 96.7 MHz	C2	LIC	100.3	56	44.3	40.00	167	132
	KWLR	N34:53:33	W092:24:50	MAUMELLE	AR	245 : 96.9 MHz	A	LIC	133.8	89	44.8	4.60	115	186
	NEW	N35:37:47	W092:14:10	FAIRFIELD BAY	AR	247 : 97.3 MHz	DX	APP	51.3	0	51.3	0.03	0	177
	NEW	N35:37:47	W092:14:10	FAIRFIELD BAY	AR	246 : 97.1 MHz	DX	APP	51.3	0	51.3	0.03	0	177
	KJSM-FM	N35:10:36	W091:23:49	AUGUSTA	AR	249 : 97.7 MHz	C1	LIC	128.3	76	52.3	100.00	189	142
	STAT:RSV	N35:10:36	W091:23:49	AUGUSTA	AR	249 : 97.7 MHz	C1	RSV	128.3	76	52.3	0.00	0	142
	NEW	N35:46:28	W091:41:15	BATESVILLE	AR	247 : 97.3 MHz	DX	APP	62.7	0	62.7	0.06	0	124
	KMMY	N35:15:35	W095:25:52	MUSKOGEE	OK	246 : 97.1 MHz	C	CP	301.3	237	64.3	100.00	451	252
	KMMY	N35:15:35	W095:25:52	MUSKOGEE	OK	246 : 97.1 MHz	C	LIC	301.3	237	64.3	100.00	380	252
	STAT:ADD	N35:15:35	W095:25:52	MUSKOGEE	OK	246 : 97.1 MHz	C0	ADD	301.3	226	75.3	0.00	0	252
	KSPW	N36:57:16	W093:17:22	SPARTA	MO	243 : 96.5 MHz	C2	LIC	132.7	56	76.7	50.00	150	316
	KDEW-FM	N34:25:52	W091:26:08	DE WITT	AR	247 : 97.3 MHz	C2	LIC	199.0	117	82.0	50.00	83	158
	KOEA	N36:35:20	W090:49:10	DONIPHAN	MO	248 : 97.5 MHz	C2	LIC	140.8	56	84.8	40.00	176	67

1 Present CP for subject station.

2 73.215 Short-Spaced processing requested; 106km req'd under 73.215.

3 73.215 Short-Spaced processing requested; 133km req'd under 73.215.

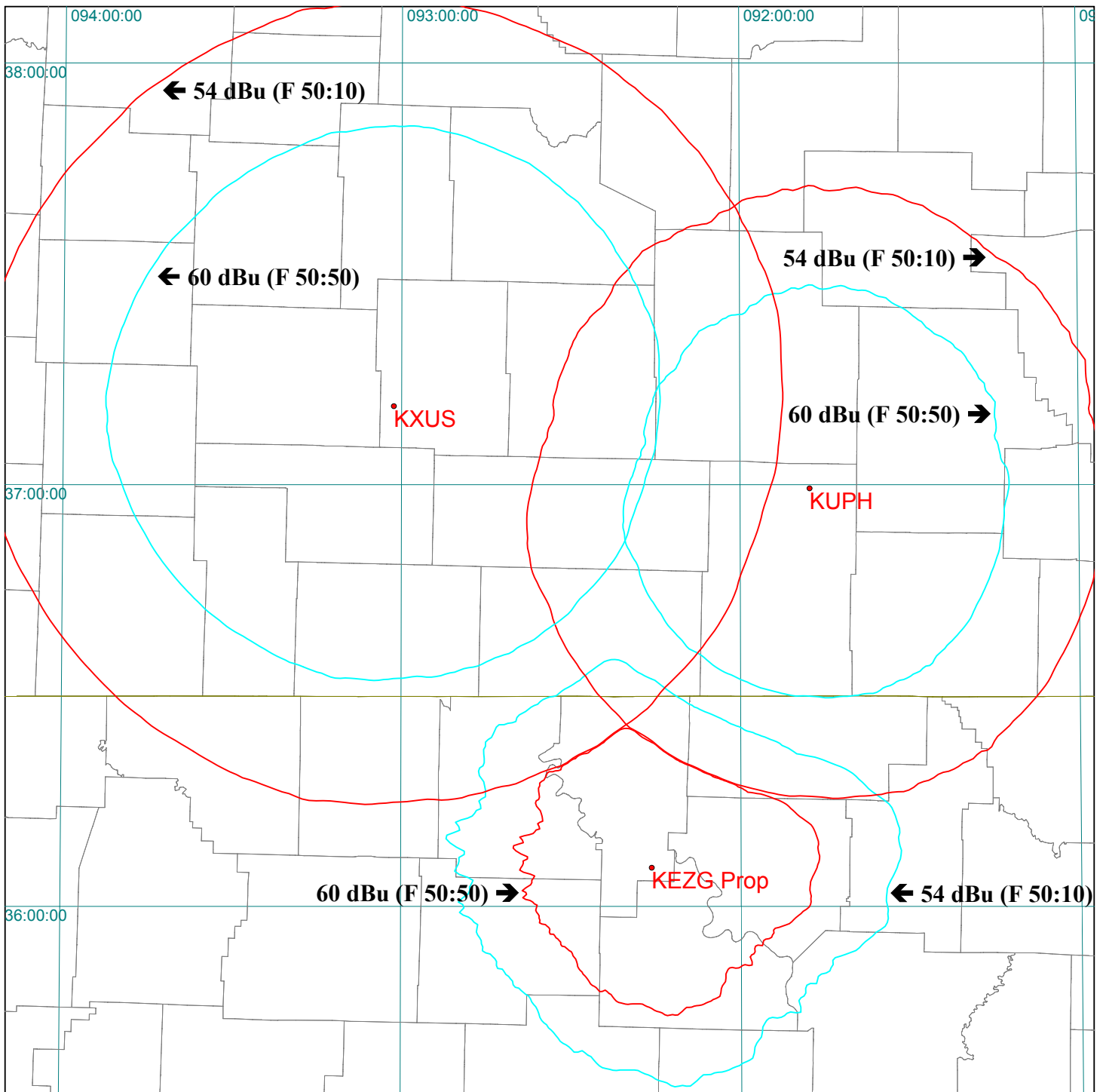
Database Date: OCT 11 2005

KEZG (FM) Ch 246 C3

Calico Rock, AR

FIGURE 7

Section 73.215 Allocation Study

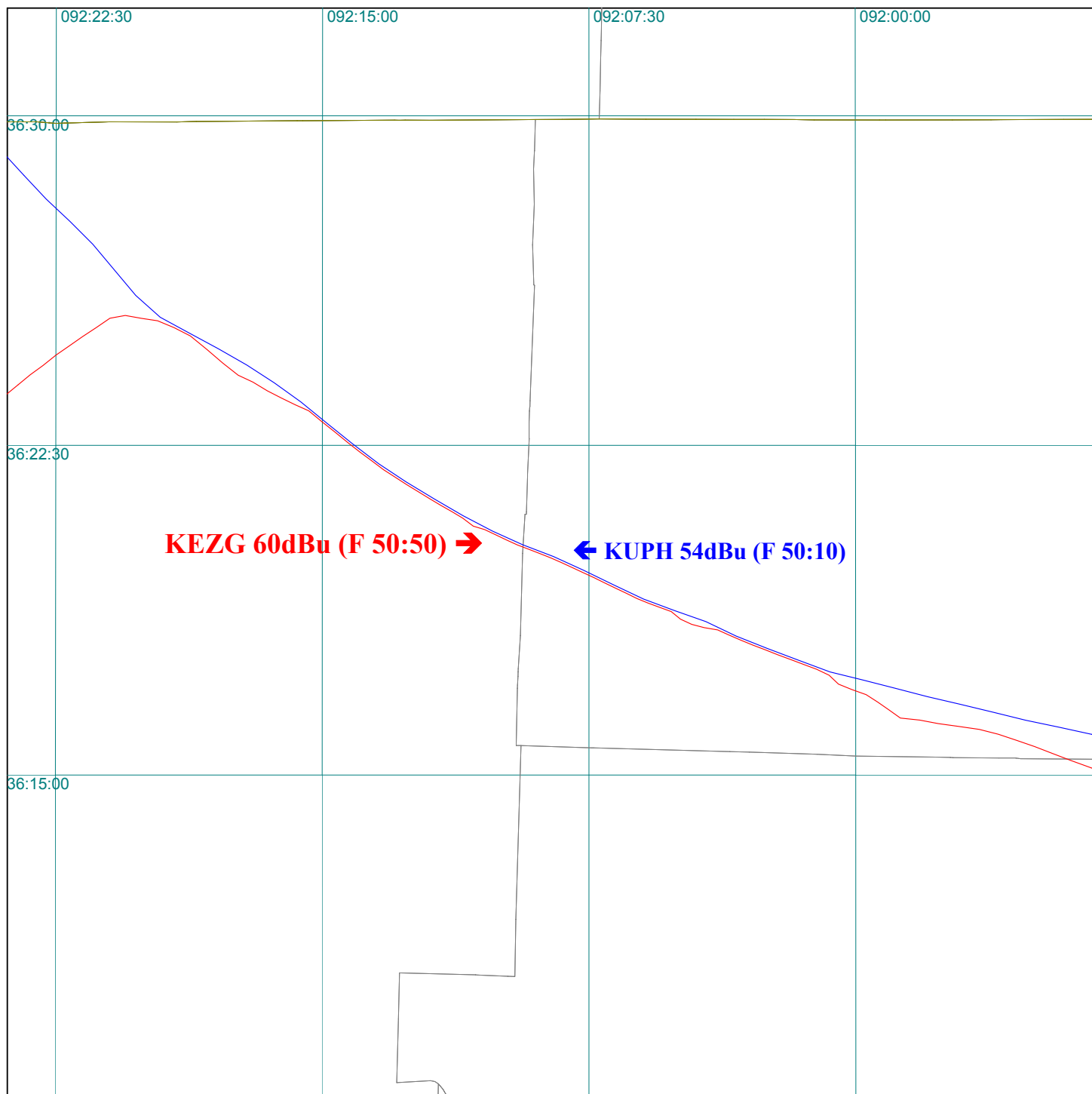


KEZG (FM) Ch 246 C3

Calico Rock, AR

FIGURE 8-A

Section 73.215 Allocation Study “Zoom”

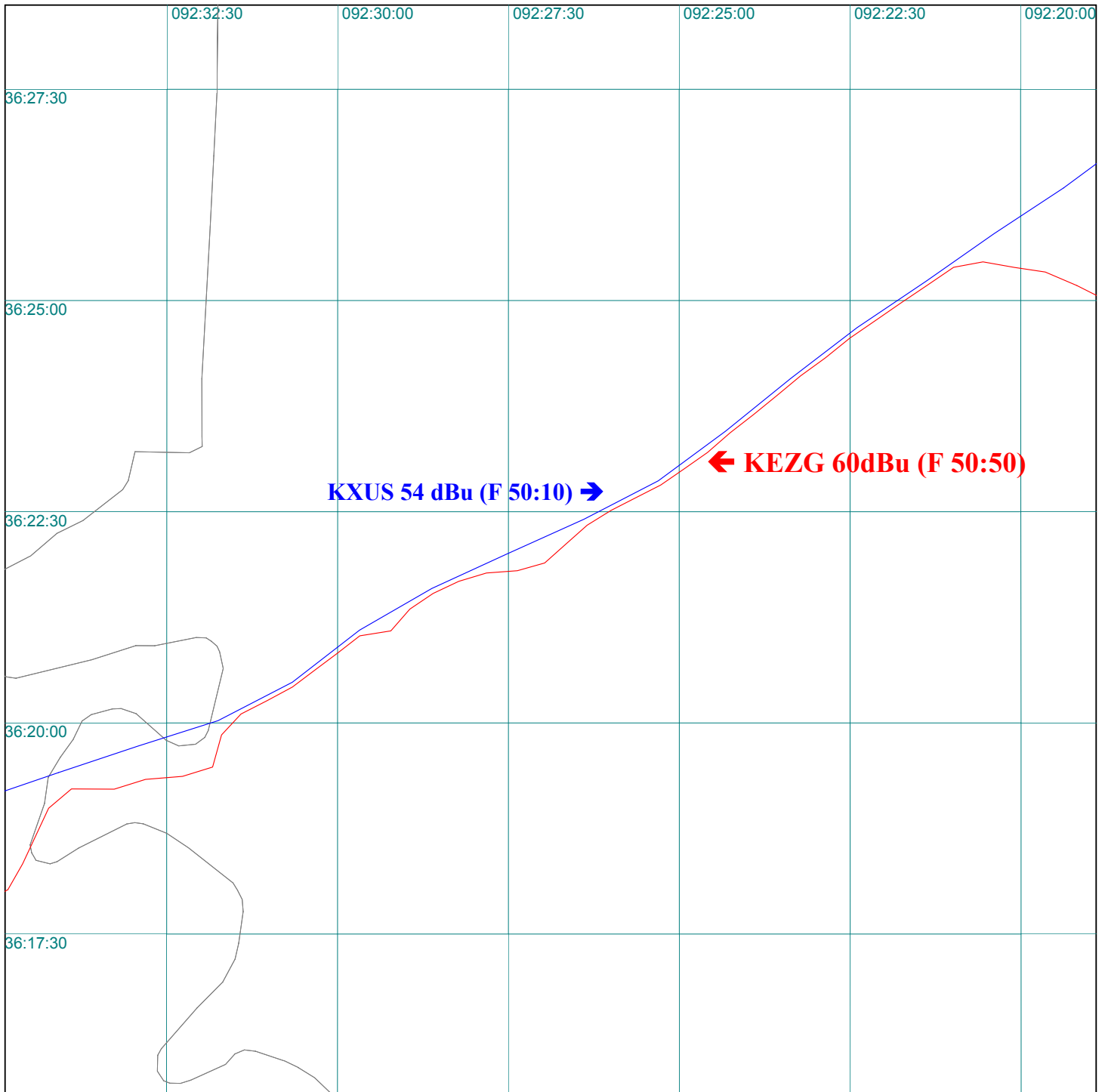


KEZG (FM) Ch 246 C3

Calico Rock, AR

FIGURE 8-B

Section 73.215 Allocation Study “Zoom”



KEZG (FM)  
Ch 246 C3  
Calico Rock, Arkansas

Figure 9:  
Distances to Relevant Contours of KXUS, Springfield, MO

'ID'	'Site Latitude'	'Site Longitude'		
KXUS (FM)	37-11-10 N	93-01-23 W		
'Antenna'	'Radials Used'	'Antenna AMSL'	ERP (kW)	
Omni	360	732	100.0	
	60dBu (F 50:50)	54 dBu (F 50:10)	Height of	
'Bearing'	'To-Contour (km)'	'To-Contour (km)'	Average Terrain (m)	'HAAT (meters)'
0	73.726	106.944	413.542	317.971
1	73.604	106.754	415.186	316.327
2	73.641	106.811	414.685	316.828
3	73.836	107.122	412.054	319.459
4	73.926	107.271	410.835	320.678
5	73.906	107.237	411.112	320.401
6	73.757	106.993	413.123	318.391
7	73.837	107.124	412.035	319.478
8	73.849	107.143	411.883	319.631
9	73.665	106.848	414.365	317.148
10	73.492	106.582	416.706	314.808
11	73.433	106.493	417.496	314.017
12	73.424	106.479	417.625	313.888
13	73.436	106.497	417.464	314.050
14	73.385	106.422	418.140	313.373
15	73.322	106.328	418.999	312.515
16	73.156	106.089	421.237	310.276
17	72.978	105.844	423.628	307.885
18	72.870	105.699	425.081	306.432
19	72.879	105.711	424.962	306.551
20	72.784	105.587	426.234	305.279
21	72.781	105.583	426.270	305.243
22	72.687	105.462	427.527	303.986
23	72.686	105.461	427.539	303.974
24	72.718	105.502	427.116	304.397
25	72.715	105.499	427.150	304.363
26	72.778	105.579	426.311	305.203
27	72.872	105.702	425.051	306.462
28	72.933	105.784	424.225	307.288
29	73.014	105.892	423.147	308.366
30	72.860	105.687	425.205	306.308
31	72.733	105.522	426.909	304.604
32	72.654	105.419	427.973	303.540
33	72.528	105.260	429.629	301.884
34	72.431	105.137	430.896	300.617
35	72.227	104.883	433.519	297.994
36	72.164	104.806	434.315	297.199
37	72.219	104.874	433.614	297.899
38	72.076	104.698	435.434	296.079
39	71.987	104.589	436.551	294.962
40	71.998	104.602	436.417	295.096
41	72.097	104.723	435.172	296.341
42	72.182	104.828	434.090	297.423

KEZG (FM)  
Ch 246 C3  
Calico Rock, Arkansas

Figure 9:  
Distances to Relevant Contours of KXUS, Springfield, MO

43	72.002	104.608	436.360	295.154
44	71.845	104.416	438.330	293.183
45	71.742	104.292	439.599	291.914
46	71.599	104.120	441.356	290.157
47	71.536	104.045	442.126	289.387
48	71.477	103.973	442.857	288.656
49	71.569	104.084	441.724	289.789
50	71.697	104.238	440.151	291.362
51	71.588	104.106	441.501	290.013
52	71.478	103.974	442.843	288.671
53	71.401	103.883	443.778	287.735
54	71.242	103.695	445.703	285.810
55	71.015	103.427	448.438	283.076
56	71.027	103.441	448.292	283.222
57	70.985	103.392	448.796	282.717
58	71.046	103.464	448.062	283.451
59	71.187	103.630	446.372	285.141
60	71.254	103.710	445.558	285.955
61	71.124	103.555	447.134	284.380
62	70.936	103.333	449.393	282.120
63	71.076	103.498	447.712	283.801
64	71.137	103.571	446.975	284.539
65	71.017	103.429	448.421	283.092
66	70.978	103.384	448.879	282.634
67	70.965	103.368	449.041	282.472
68	70.832	103.211	450.630	280.883
69	71.008	103.419	448.520	282.993
70	71.187	103.630	446.370	285.144
71	71.212	103.660	446.064	285.449
72	71.225	103.675	445.911	285.603
73	71.284	103.745	445.194	286.319
74	71.232	103.683	445.824	285.689
75	71.237	103.690	445.762	285.751
76	71.282	103.742	445.226	286.287
77	71.139	103.573	446.950	284.563
78	70.976	103.381	448.902	282.611
79	70.856	103.239	450.348	281.165
80	70.687	103.040	452.363	279.150
81	70.489	102.808	454.716	276.797
82	70.277	102.560	457.236	274.277
83	70.115	102.370	459.151	272.362
84	70.037	102.278	460.077	271.436
85	69.925	102.147	461.398	270.115
86	69.888	102.103	461.838	269.675
87	69.916	102.136	461.505	270.008
88	69.948	102.173	461.130	270.384
89	69.910	102.129	461.580	269.933
90	69.796	101.995	462.923	268.591
91	69.661	101.836	464.523	266.990
92	69.557	101.714	465.755	265.758
93	69.523	101.674	466.159	265.355
94	69.476	101.618	466.717	264.797

KEZG (FM)  
Ch 246 C3  
Calico Rock, Arkansas

Figure 9:  
Distances to Relevant Contours of KXUS, Springfield, MO

95	69.428	101.562	467.283	264.230
96	69.393	101.520	467.697	263.816
97	69.455	101.593	466.964	264.550
98	69.509	101.658	466.320	265.193
99	69.518	101.668	466.219	265.294
100	69.467	101.608	466.822	264.691
101	69.327	101.442	468.484	263.029
102	69.155	101.236	470.536	260.978
103	69.009	101.061	472.275	259.238
104	68.921	100.956	473.325	258.188
105	68.800	100.812	474.765	256.749
106	68.776	100.782	475.058	256.455
107	68.880	100.907	473.818	257.696
108	68.940	100.979	473.092	258.422
109	68.960	101.002	472.862	258.652
110	68.974	101.019	472.695	258.819
111	68.967	101.012	472.768	258.746
112	68.924	100.960	473.287	258.226
113	69.003	101.055	472.338	259.175
114	69.107	101.179	471.103	260.410
115	69.191	101.279	470.108	261.405
116	69.306	101.417	468.735	262.779
117	69.537	101.690	465.997	265.516
118	69.889	102.104	461.823	269.691
119	70.116	102.371	459.137	272.377
120	70.295	102.582	457.012	274.501
121	70.410	102.716	455.655	275.859
122	70.469	102.784	454.958	276.555
123	70.510	102.833	454.461	277.052
124	70.613	102.953	453.240	278.273
125	70.653	103.000	452.761	278.752
126	70.612	102.952	453.253	278.260
127	70.590	102.926	453.514	277.999
128	70.655	103.002	452.746	278.768
129	70.633	102.977	453.000	278.514
130	70.666	103.015	452.616	278.897
131	70.623	102.965	453.123	278.390
132	70.622	102.963	453.138	278.376
133	70.576	102.910	453.680	277.834
134	70.543	102.871	454.073	277.440
135	70.513	102.837	454.428	277.085
136	70.474	102.791	454.887	276.626
137	70.634	102.978	452.989	278.524
138	70.905	103.297	449.763	281.750
139	71.215	103.663	446.031	285.482
140	71.392	103.873	443.887	287.627
141	71.347	103.820	444.430	287.083
142	71.378	103.856	444.062	287.451
143	71.355	103.828	444.342	287.171
144	71.275	103.734	445.309	286.204
145	71.266	103.723	445.420	286.093
146	71.256	103.711	445.541	285.972

KEZG (FM)  
Ch 246 C3  
Calico Rock, Arkansas

Figure 9:  
Distances to Relevant Contours of KXUS, Springfield, MO

147	71.367	103.843	444.187	287.326
148	71.547	104.057	441.997	289.517
149	71.683	104.221	440.327	291.186
150	71.603	104.124	441.318	290.196
151	71.468	103.963	442.959	288.554
152	71.370	103.846	444.156	287.357
153	71.441	103.931	443.289	288.224
154	71.747	104.298	439.541	291.973
155	71.801	104.363	438.877	292.637
156	71.622	104.147	441.085	290.428
157	71.491	103.990	442.685	288.828
158	71.397	103.878	443.831	287.682
159	71.485	103.982	442.761	288.753
160	71.558	104.071	441.861	289.653
161	71.761	104.315	439.367	292.146
162	71.872	104.449	437.996	293.518
163	71.783	104.341	439.097	292.417
164	71.567	104.081	441.754	289.759
165	71.479	103.976	442.824	288.689
166	71.618	104.143	441.123	290.390
167	71.797	104.358	438.926	292.588
168	71.749	104.301	439.513	292.001
169	71.779	104.336	439.150	292.364
170	71.990	104.593	436.515	294.998
171	71.985	104.587	436.573	294.940
172	71.970	104.569	436.764	294.749
173	71.821	104.388	438.620	292.893
174	71.535	104.043	442.141	289.372
175	71.324	103.792	444.714	286.799
176	71.368	103.845	444.175	287.338
177	71.472	103.967	442.916	288.597
178	71.593	104.113	441.429	290.084
179	71.615	104.139	441.164	290.349
180	71.657	104.190	440.645	290.868
181	71.865	104.441	438.078	293.435
182	71.977	104.576	436.682	294.831
183	72.208	104.860	433.754	297.759
184	72.349	105.033	431.960	299.554
185	72.348	105.033	431.963	299.551
186	72.326	105.005	432.248	299.265
187	72.328	105.007	432.227	299.286
188	72.377	105.069	431.590	299.923
189	72.446	105.156	430.701	300.813
190	72.619	105.375	428.435	303.078
191	72.920	105.766	424.408	307.106
192	73.127	106.048	421.622	309.891
193	73.122	106.042	421.685	309.828
194	72.926	105.775	424.319	307.195
195	72.718	105.502	427.112	304.401
196	72.762	105.559	426.524	304.989
197	72.677	105.450	427.655	303.858
198	72.596	105.346	428.730	302.783



KEZG (FM)  
Ch 246 C3  
Calico Rock, Arkansas

Figure 9:  
Distances to Relevant Contours of KXUS, Springfield, MO

199	72.516	105.244	429.791	301.722
200	72.489	105.211	430.131	301.382
201	72.525	105.256	429.664	301.850
202	72.663	105.431	427.849	303.664
203	72.540	105.274	429.475	302.038
204	72.540	105.275	429.473	302.040
205	72.506	105.232	429.914	301.600
206	72.451	105.163	430.630	300.883
207	72.366	105.055	431.733	299.781
208	72.303	104.977	432.545	298.968
209	72.275	104.942	432.909	298.604
210	72.206	104.857	433.788	297.725
211	72.190	104.837	433.994	297.519
212	72.207	104.858	433.779	297.734
213	72.226	104.882	433.525	297.988
214	72.322	105.000	432.306	299.208
215	72.449	105.159	430.661	300.852
216	72.526	105.257	429.660	301.853
217	72.607	105.360	428.585	302.928
218	72.576	105.321	428.994	302.519
219	72.503	105.227	429.960	301.553
220	72.577	105.322	428.982	302.531
221	72.662	105.431	427.858	303.655
222	72.724	105.510	427.028	304.485
223	72.739	105.528	426.841	304.673
224	72.686	105.461	427.538	303.975
225	72.689	105.465	427.498	304.015
226	72.720	105.504	427.091	304.423
227	72.734	105.523	426.901	304.612
228	72.763	105.560	426.509	305.004
229	72.805	105.615	425.947	305.567
230	72.853	105.678	425.303	306.211
231	72.898	105.737	424.703	306.811
232	72.940	105.793	424.137	307.376
233	72.983	105.851	423.556	307.957
234	73.040	105.928	422.795	308.718
235	73.100	106.010	421.991	309.522
236	73.159	106.093	421.195	310.319
237	73.218	106.178	420.392	311.121
238	73.283	106.271	419.525	311.988
239	73.336	106.350	418.801	312.712
240	73.373	106.404	418.305	313.208
241	73.366	106.394	418.400	313.113
242	73.369	106.398	418.365	313.148
243	73.399	106.443	417.951	313.562
244	73.488	106.576	416.754	314.759
245	73.595	106.739	415.311	316.202
246	73.718	106.931	413.655	317.859
247	73.805	107.071	412.476	319.037
248	73.866	107.171	411.652	319.861
249	73.900	107.228	411.183	320.330
250	73.954	107.317	410.462	321.051

KEZG (FM)  
Ch 246 C3  
Calico Rock, Arkansas

Figure 9:  
Distances to Relevant Contours of KXUS, Springfield, MO

251	74.017	107.423	409.609	321.905
252	74.080	107.531	408.752	322.762
253	74.146	107.645	407.852	323.661
254	74.225	107.782	406.789	324.725
255	74.300	107.916	405.762	325.752
256	74.405	108.105	404.345	327.168
257	74.606	108.482	401.610	329.903
258	74.954	109.160	396.888	334.626
259	75.214	109.693	393.348	338.165
260	75.248	109.764	392.884	338.629
261	75.259	109.788	392.729	338.784
262	75.304	109.882	392.116	339.397
263	75.321	109.917	391.888	339.626
264	75.357	109.993	391.399	340.114
265	75.580	110.475	388.356	343.157
266	75.532	110.371	389.006	342.508
267	75.292	109.856	392.285	339.229
268	75.236	109.739	393.048	338.466
269	75.310	109.895	392.035	339.478
270	75.557	110.424	388.677	342.837
271	75.620	110.562	387.811	343.702
272	75.670	110.670	387.136	344.377
273	75.559	110.429	388.644	342.869
274	75.368	110.016	391.250	340.264
275	75.240	109.747	392.994	338.519
276	75.147	109.555	394.259	337.254
277	75.050	109.355	395.580	335.933
278	74.965	109.183	396.731	334.782
279	74.894	109.039	397.701	333.812
280	74.876	109.003	397.948	333.565
281	74.859	108.969	398.179	333.334
282	74.747	108.752	399.696	331.817
283	74.639	108.545	401.161	330.353
284	74.459	108.206	403.606	327.907
285	74.418	108.130	404.164	327.350
286	74.331	107.970	405.350	326.163
287	74.156	107.662	407.720	323.793
288	74.068	107.511	408.910	322.604
289	74.005	107.404	409.764	321.749
290	73.932	107.281	410.751	320.763
291	73.836	107.122	412.053	319.460
292	73.850	107.144	411.871	319.642
293	73.821	107.097	412.261	319.253
294	73.737	106.961	413.393	318.120
295	73.617	106.773	415.020	316.494
296	73.542	106.657	416.034	315.480
297	73.521	106.626	416.308	315.205
298	73.505	106.601	416.530	314.983
299	73.410	106.458	417.814	313.699
300	73.312	106.314	419.127	312.386
301	73.213	106.171	420.466	311.048
302	73.167	106.105	421.081	310.432

KEZG (FM)  
Ch 246 C3  
Calico Rock, Arkansas

Figure 9:  
Distances to Relevant Contours of KXUS, Springfield, MO

303	73.184	106.129	420.857	310.656
304	73.174	106.115	420.994	310.519
305	73.159	106.094	421.190	310.324
306	73.105	106.018	421.918	309.596
307	73.003	105.878	423.285	308.228
308	72.858	105.684	425.235	306.279
309	72.691	105.467	427.478	304.035
310	72.543	105.279	429.428	302.085
311	72.429	105.135	430.916	300.598
312	72.334	105.015	432.150	299.364
313	72.288	104.958	432.742	298.771
314	72.288	104.957	432.743	298.770
315	72.284	104.953	432.794	298.719
316	72.249	104.910	433.232	298.282
317	72.295	104.966	432.652	298.861
318	72.517	105.246	429.769	301.745
319	72.670	105.440	427.757	303.757
320	72.742	105.532	426.800	304.713
321	72.730	105.518	426.954	304.559
322	72.714	105.496	427.175	304.338
323	72.656	105.422	427.942	303.571
324	72.556	105.295	429.262	302.251
325	72.484	105.204	430.200	301.313
326	72.476	105.194	430.308	301.205
327	72.555	105.294	429.273	302.240
328	72.648	105.413	428.043	303.470
329	72.642	105.404	428.129	303.384
330	72.579	105.324	428.965	302.549
331	72.608	105.361	428.577	302.936
332	72.634	105.395	428.231	303.282
333	72.743	105.534	426.786	304.727
334	72.784	105.587	426.236	305.277
335	72.746	105.538	426.745	304.769
336	72.668	105.438	427.785	303.728
337	72.699	105.478	427.366	304.147
338	72.737	105.526	426.864	304.649
339	72.833	105.651	425.577	305.937
340	72.890	105.727	424.803	306.711
341	72.971	105.834	423.723	307.790
342	73.165	106.102	421.116	310.397
343	73.269	106.252	419.704	311.809
344	73.286	106.277	419.478	312.035
345	73.436	106.498	417.452	314.061
346	73.715	106.926	413.693	317.821
347	73.822	107.099	412.239	319.274
348	73.707	106.915	413.794	317.719
349	73.529	106.638	416.202	315.311
350	73.266	106.247	419.753	311.761
351	73.259	106.236	419.850	311.663
352	73.340	106.356	418.746	312.767
353	73.379	106.413	418.224	313.290
354	73.504	106.600	416.539	314.975

KEZG (FM)  
Ch 246 C3  
Calico Rock, Arkansas

Figure 9:  
Distances to Relevant Contours of KXUS, Springfield, MO

355	73.604	106.754	415.185	316.329
356	73.611	106.764	415.097	316.416
357	73.572	106.704	415.626	315.888
358	73.576	106.711	415.562	315.951
359	73.699	106.902	413.905	317.608

KEZG (FM)  
Ch 246 C3  
Calico Rock, Arkansas

Figure 10:  
Distances to Relevant Contours of KUPH, Mountain View, MO

'ID'	'Site Latitude'	'Site Longitude'		
KUPH (FM)	36-59-29 N	91-47-41 W		
'Antenna'	'Radials Used'	'Antenna AMSL'	ERP (kW)	
Omni	360	504	50.0	
	60dBu (F 50:50)	54 dBu (F 50:10)	Height of	
'Bearing'	'To-Contour (km)'	'To-Contour (km)'	Average Terrain (m)	'HAAT (meters)'
0	53.705	79.845	341.989	162.011
1	53.645	79.774	342.501	161.499
2	53.139	79.183	346.656	157.344
3	52.755	78.743	349.699	154.301
4	52.719	78.702	349.984	154.016
5	52.874	78.879	348.765	155.235
6	53.110	79.150	346.887	157.113
7	53.557	79.671	343.232	160.768
8	53.877	80.050	340.525	163.475
9	54.166	80.400	338.010	165.990
10	54.117	80.340	338.440	165.560
11	53.858	80.027	340.692	163.308
12	53.758	79.908	341.545	162.455
13	53.804	79.962	341.153	162.847
14	53.857	80.025	340.703	163.298
15	54.135	80.362	338.278	165.722
16	54.319	80.589	336.635	167.366
17	54.298	80.563	336.825	167.175
18	54.121	80.345	338.402	165.598
19	53.938	80.124	339.999	164.002
20	53.916	80.097	340.191	163.809
21	54.060	80.271	338.941	165.059
22	54.195	80.435	337.749	166.251
23	53.913	80.093	340.221	163.779
24	53.654	79.785	342.421	161.579
25	53.555	79.668	343.249	160.751
26	53.561	79.675	343.203	160.797
27	53.632	79.758	342.611	161.389
28	53.593	79.712	342.938	161.062
29	53.488	79.589	343.808	160.192
30	53.338	79.413	345.046	158.954
31	53.164	79.211	346.457	157.543
32	53.095	79.132	347.007	156.993
33	52.973	78.992	347.981	156.019
34	53.071	79.105	347.198	156.802
35	52.821	78.817	349.188	154.812
36	52.548	78.508	351.309	152.691
37	52.626	78.597	350.704	153.296
38	52.587	78.552	351.007	152.993
39	52.527	78.484	351.474	152.526
40	52.767	78.756	349.610	154.390
41	53.096	79.133	347.000	157.000
42	53.266	79.331	345.625	158.375

KEZG (FM)  
Ch 246 C3  
Calico Rock, Arkansas

Figure 10:  
Distances to Relevant Contours of KUPH, Mountain View, MO

43	53.418	79.507	344.387	159.613
44	53.656	79.787	342.406	161.594
45	53.713	79.854	341.927	162.073
46	53.543	79.654	343.348	160.652
47	53.739	79.886	341.702	162.298
48	53.967	80.158	339.752	164.248
49	53.979	80.172	339.651	164.349
50	53.921	80.102	340.153	163.848
51	53.708	79.849	341.965	162.035
52	53.724	79.868	341.829	162.171
53	53.684	79.820	342.171	161.829
54	53.590	79.710	342.955	161.045
55	53.643	79.772	342.515	161.485
56	53.518	79.624	343.559	160.441
57	53.347	79.425	344.968	159.033
58	53.606	79.728	342.823	161.178
59	53.872	80.043	340.573	163.427
60	53.469	79.568	343.961	160.039
61	53.239	79.298	345.852	158.148
62	53.443	79.536	344.183	159.817
63	53.708	79.848	341.967	162.033
64	53.866	80.036	340.624	163.376
65	54.077	80.291	338.794	165.206
66	53.595	79.715	342.917	161.083
67	53.111	79.151	346.878	157.122
68	52.709	78.690	350.061	153.939
69	52.385	78.324	352.560	151.440
70	52.292	78.218	353.271	150.729
71	52.078	77.978	354.888	149.112
72	51.816	77.685	356.842	147.158
73	51.469	77.297	359.397	144.603
74	50.831	76.586	364.004	139.996
75	50.729	76.473	364.731	139.269
76	51.034	76.812	362.550	141.450
77	51.084	76.868	362.187	141.813
78	51.084	76.869	362.185	141.815
79	51.116	76.904	361.953	142.047
80	51.126	76.915	361.883	142.117
81	51.121	76.910	361.916	142.084
82	51.295	77.104	360.660	143.340
83	51.811	77.680	356.876	147.125
84	52.269	78.192	353.448	150.553
85	52.450	78.397	352.064	151.936
86	52.563	78.525	351.190	152.810
87	52.637	78.608	350.624	153.377
88	52.660	78.635	350.443	153.557
89	52.645	78.618	350.556	153.444
90	52.541	78.500	351.366	152.634
91	52.361	78.297	352.744	151.256
92	52.203	78.118	353.945	150.055
93	51.995	77.885	355.508	148.492
94	51.805	77.673	356.920	147.080

KEZG (FM)  
Ch 246 C3  
Calico Rock, Arkansas

Figure 10:  
Distances to Relevant Contours of KUPH, Mountain View, MO

95	51.691	77.545	357.768	146.232
96	51.577	77.418	358.603	145.397
97	51.727	77.586	357.498	146.502
98	51.839	77.711	356.668	147.332
99	51.905	77.784	356.181	147.819
100	51.935	77.818	355.959	148.041
101	51.959	77.845	355.778	148.222
102	51.990	77.879	355.546	148.454
103	52.022	77.916	355.303	148.697
104	52.116	78.020	354.601	149.400
105	52.158	78.067	354.287	149.713
106	52.258	78.180	353.530	150.471
107	52.427	78.371	352.238	151.762
108	52.544	78.503	351.341	152.659
109	52.591	78.556	350.980	153.020
110	52.590	78.555	350.987	153.013
111	52.599	78.565	350.916	153.084
112	52.659	78.633	350.451	153.549
113	52.714	78.696	350.021	153.979
114	52.720	78.703	349.974	154.026
115	52.775	78.765	349.546	154.454
116	52.874	78.879	348.765	155.235
117	52.971	78.989	347.999	156.001
118	53.024	79.051	347.574	156.426
119	53.100	79.138	346.969	157.031
120	53.200	79.253	346.167	157.833
121	53.291	79.359	345.425	158.575
122	53.382	79.465	344.684	159.316
123	53.492	79.594	343.776	160.224
124	53.555	79.667	343.254	160.746
125	53.645	79.774	342.497	161.503
126	53.798	79.955	341.203	162.797
127	54.005	80.205	339.417	164.583
128	54.247	80.499	337.287	166.713
129	54.449	80.749	335.458	168.542
130	54.548	80.874	334.544	169.456
131	54.604	80.944	334.022	169.978
132	54.653	81.006	333.562	170.439
133	54.710	81.079	333.023	170.978
134	54.735	81.111	332.789	171.211
135	54.804	81.200	332.128	171.872
136	54.837	81.242	331.811	172.189
137	54.913	81.341	331.079	172.922
138	54.896	81.319	331.243	172.757
139	54.930	81.364	330.906	173.094
140	55.151	81.656	328.706	175.294
141	55.183	81.698	328.390	175.610
142	55.243	81.779	327.773	176.227
143	55.329	81.896	326.884	177.116
144	55.690	82.403	322.987	181.013
145	56.208	83.161	317.054	186.946
146	56.302	83.300	315.966	188.034

KEZG (FM)  
Ch 246 C3  
Calico Rock, Arkansas

Figure 10:  
Distances to Relevant Contours of KUPH, Mountain View, MO

147	55.895	82.703	320.652	183.348
148	55.958	82.795	319.926	184.075
149	56.202	83.153	317.117	186.883
150	56.102	83.006	318.274	185.726
151	55.977	82.823	319.709	184.291
152	56.128	83.044	317.973	186.027
153	56.158	83.088	317.627	186.373
154	56.076	82.969	318.565	185.435
155	55.836	82.614	321.343	182.657
156	55.809	82.575	321.646	182.354
157	56.029	82.899	319.108	184.892
158	56.102	83.006	318.268	185.732
159	55.981	82.829	319.662	184.338
160	55.993	82.846	319.528	184.472
161	56.335	83.348	315.587	188.414
162	56.553	83.664	313.088	190.912
163	56.524	83.622	313.419	190.581
164	56.266	83.246	316.384	187.616
165	56.051	82.931	318.857	185.144
166	55.962	82.801	319.880	184.120
167	55.982	82.829	319.659	184.342
168	55.849	82.633	321.192	182.808
169	55.778	82.530	322.001	181.999
170	55.674	82.379	323.174	180.826
171	55.521	82.162	324.845	179.155
172	55.452	82.066	325.584	178.416
173	55.460	82.076	325.504	178.496
174	55.490	82.118	325.179	178.821
175	55.450	82.063	325.601	178.399
176	55.369	81.951	326.459	177.541
177	55.158	81.664	328.643	175.357
178	54.997	81.451	330.250	173.750
179	54.903	81.328	331.175	172.826
180	54.827	81.230	331.906	172.094
181	54.790	81.182	332.263	171.737
182	54.756	81.138	332.590	171.410
183	54.855	81.266	331.635	172.365
184	54.923	81.354	330.982	173.018
185	54.871	81.287	331.479	172.521
186	54.794	81.187	332.227	171.773
187	54.679	81.040	333.314	170.686
188	54.599	80.938	334.072	169.928
189	54.490	80.800	335.083	168.917
190	54.415	80.708	335.762	168.238
191	54.362	80.642	336.248	167.752
192	54.301	80.566	336.801	167.199
193	54.261	80.517	337.159	166.841
194	54.255	80.509	337.217	166.783
195	54.138	80.366	338.251	165.749
196	54.030	80.234	339.204	164.796
197	53.927	80.110	340.098	163.902
198	53.760	79.910	341.526	162.474



KEZG (FM)  
Ch 246 C3  
Calico Rock, Arkansas

Figure 10:  
Distances to Relevant Contours of KUPH, Mountain View, MO

199	53.738	79.884	341.715	162.285
200	53.718	79.860	341.885	162.115
201	53.616	79.739	342.744	161.256
202	53.524	79.631	343.511	160.489
203	53.483	79.583	343.849	160.151
204	53.531	79.640	343.449	160.551
205	53.535	79.645	343.414	160.586
206	53.488	79.590	343.804	160.197
207	53.411	79.500	344.440	159.560
208	53.332	79.407	345.093	158.907
209	53.227	79.285	345.944	158.056
210	53.058	79.089	347.306	156.694
211	52.883	78.889	348.693	155.307
212	52.717	78.699	350.002	153.998
213	52.647	78.620	350.542	153.458
214	52.655	78.629	350.480	153.520
215	52.749	78.736	349.749	154.251
216	52.899	78.907	348.568	155.432
217	53.062	79.093	347.278	156.722
218	52.971	78.989	348.000	156.001
219	52.726	78.710	349.926	154.074
220	52.501	78.455	351.668	152.332
221	52.401	78.341	352.440	151.560
222	52.359	78.294	352.758	151.242
223	52.268	78.192	353.448	150.552
224	52.185	78.098	354.081	149.919
225	52.160	78.070	354.270	149.730
226	52.125	78.030	354.535	149.465
227	51.988	77.877	355.561	148.440
228	51.807	77.674	356.911	147.089
229	51.608	77.452	358.378	145.622
230	51.437	77.262	359.629	144.371
231	51.424	77.248	359.720	144.280
232	51.371	77.188	360.109	143.891
233	51.258	77.062	360.931	143.069
234	51.227	77.027	361.156	142.844
235	51.231	77.032	361.125	142.875
236	51.205	77.003	361.313	142.687
237	51.135	76.926	361.815	142.185
238	51.034	76.813	362.545	141.455
239	50.918	76.684	363.376	140.624
240	50.837	76.594	363.958	140.042
241	50.660	76.395	365.226	138.774
242	50.510	76.228	366.289	137.711
243	50.373	76.074	367.260	136.740
244	50.116	75.786	369.074	134.926
245	49.899	75.543	370.596	133.404
246	49.827	75.462	371.101	132.899
247	49.892	75.534	370.649	133.351
248	50.044	75.705	369.581	134.419
249	50.181	75.859	368.614	135.386
250	50.300	75.992	367.775	136.225

KEZG (FM)  
Ch 246 C3  
Calico Rock, Arkansas

Figure 10:  
Distances to Relevant Contours of KUPH, Mountain View, MO

251	50.406	76.112	367.022	136.978
252	50.599	76.327	365.659	138.341
253	50.691	76.430	365.004	138.997
254	50.692	76.432	364.994	139.006
255	50.580	76.307	365.790	138.210
256	50.415	76.121	366.965	137.036
257	50.355	76.054	367.384	136.616
258	50.363	76.063	367.332	136.668
259	50.203	75.885	368.455	135.545
260	49.929	75.576	370.387	133.613
261	49.791	75.421	371.355	132.645
262	49.702	75.320	371.978	132.023
263	49.579	75.181	372.841	131.159
264	49.441	75.024	373.807	130.193
265	49.261	74.820	375.064	128.936
266	49.046	74.575	376.562	127.438
267	48.780	74.268	378.428	125.572
268	48.482	73.923	380.516	123.484
269	48.212	73.608	382.416	121.584
270	47.957	73.312	384.188	119.812
271	47.751	73.077	385.578	118.422
272	47.553	72.854	386.890	117.110
273	47.275	72.540	388.727	115.273
274	46.910	72.132	391.073	112.927
275	46.719	71.921	392.273	111.727
276	46.538	71.722	393.400	110.600
277	46.360	71.526	394.502	109.498
278	46.324	71.485	394.730	109.271
279	46.167	71.312	395.691	108.309
280	45.694	70.794	398.536	105.464
281	45.403	70.476	400.252	103.748
282	45.572	70.661	399.260	104.740
283	45.509	70.592	399.629	104.371
284	45.185	70.236	401.533	102.467
285	44.957	69.985	402.855	101.145
286	45.078	70.118	402.156	101.844
287	45.416	70.491	400.176	103.825
288	45.989	71.116	396.771	107.229
289	46.236	71.388	395.271	108.729
290	46.361	71.527	394.498	109.502
291	46.408	71.579	394.207	109.793
292	46.530	71.714	393.446	110.554
293	46.757	71.963	392.036	111.965
294	46.844	72.059	391.489	112.511
295	46.889	72.109	391.207	112.793
296	46.920	72.144	391.007	112.993
297	47.070	72.310	390.052	113.948
298	47.066	72.306	390.076	113.924
299	47.227	72.486	389.041	114.959
300	47.608	72.916	386.529	117.471
301	47.693	73.011	385.970	118.030
302	47.932	73.284	384.356	119.644

KEZG (FM)  
Ch 246 C3  
Calico Rock, Arkansas

Figure 10:  
Distances to Relevant Contours of KUPH, Mountain View, MO

303	47.939	73.291	384.313	119.687
304	48.132	73.514	382.982	121.018
305	48.133	73.515	382.974	121.026
306	47.936	73.288	384.332	119.668
307	47.825	73.161	385.085	118.915
308	47.945	73.299	384.268	119.732
309	47.792	73.124	385.302	118.699
310	47.628	72.938	386.399	117.601
311	47.386	72.666	387.994	116.006
312	47.337	72.610	388.320	115.680
313	47.636	72.947	386.346	117.654
314	47.822	73.158	385.103	118.897
315	48.115	73.495	383.095	120.905
316	48.670	74.141	379.195	124.805
317	48.960	74.476	377.166	126.834
318	49.116	74.655	376.073	127.927
319	49.227	74.781	375.299	128.701
320	49.268	74.828	375.013	128.987
321	49.396	74.973	374.120	129.880
322	49.858	75.496	370.886	133.114
323	50.040	75.701	369.608	134.392
324	50.300	75.993	367.773	136.227
325	50.665	76.401	365.186	138.814
326	50.526	76.246	366.175	137.825
327	50.457	76.169	366.663	137.337
328	50.418	76.125	366.943	137.057
329	50.246	75.932	368.158	135.842
330	49.862	75.501	370.857	133.143
331	49.799	75.430	371.296	132.704
332	50.070	75.735	369.397	134.604
333	50.195	75.876	368.512	135.488
334	50.067	75.731	369.419	134.582
335	50.213	75.896	368.384	135.616
336	50.105	75.775	369.146	134.854
337	49.764	75.391	371.544	132.456
338	49.557	75.155	372.997	131.003
339	49.254	74.812	375.110	128.890
340	49.363	74.936	374.350	129.650
341	49.930	75.577	370.382	133.619
342	50.614	76.344	365.551	138.449
343	50.697	76.437	364.960	139.040
344	50.669	76.406	365.156	138.844
345	51.017	76.794	362.666	141.334
346	51.545	77.382	358.840	145.160
347	52.079	77.979	354.881	149.119
348	52.184	78.097	354.088	149.912
349	52.166	78.077	354.221	149.779
350	52.213	78.129	353.871	150.129
351	52.033	77.927	355.226	148.774
352	52.033	77.927	355.224	148.776
353	52.297	78.224	353.234	150.766
354	52.663	78.638	350.419	153.581

KEZG (FM)  
Ch 246 C3  
Calico Rock, Arkansas

Figure 10:  
Distances to Relevant Contours of KUPH, Mountain View, MO

355	53.111	79.151	346.880	157.120
356	53.029	79.056	347.538	156.462
357	52.692	78.671	350.193	153.807
358	52.968	78.986	348.023	155.977
359	53.439	79.531	344.216	159.785

KEZG (FM)  
CH 246 C3  
Calico Rock, AR

FIGURE 11:  
Directional Antenna Values

<u>'Azimuth'</u>	<u>'Field Value'</u>	<u>'dB Gain'</u>
0	0.526	-5.5803
1	0.517	-5.7303
2	0.508	-5.8830
3	0.499	-6.0384
4	0.490	-6.1966
5	0.481	-6.3577
6	0.473	-6.4969
7	0.466	-6.6383
8	0.458	-6.7821
9	0.450	-6.9282
10	0.443	-7.0769
11	0.439	-7.1546
12	0.435	-7.2330
13	0.431	-7.3122
14	0.427	-7.3920
15	0.423	-7.4726
16	0.419	-7.5593
17	0.415	-7.6468
18	0.410	-7.7352
19	0.406	-7.8245
20	0.402	-7.9147
21	0.400	-7.9534
22	0.398	-7.9924
23	0.397	-8.0315
24	0.395	-8.0707
25	0.393	-8.1102
26	0.392	-8.1452
27	0.390	-8.1803
28	0.388	-8.2156
29	0.387	-8.2510
30	0.385	-8.2866
31	0.389	-8.1933
32	0.394	-8.1011
33	0.398	-8.0098
34	0.402	-7.9194
35	0.406	-7.8300
36	0.413	-7.6810
37	0.420	-7.5345
38	0.427	-7.3904
39	0.434	-7.2487
40	0.441	-7.1092
41	0.447	-7.0003
42	0.452	-6.8927
43	0.458	-6.7864
44	0.463	-6.6814
45	0.469	-6.5777

KEZG (FM)  
CH 246 C3  
Calico Rock, AR

FIGURE 11:  
Directional Antenna Values

46	0.480	-6.3683
47	0.492	-6.1638
48	0.503	-5.9640
49	0.515	-5.7687
50	0.526	-5.5777
51	0.539	-5.3683
52	0.552	-5.1638
53	0.565	-4.9640
54	0.578	-4.7687
55	0.590	-4.5777
56	0.605	-4.3683
57	0.619	-4.1638
58	0.634	-3.9640
59	0.648	-3.7687
60	0.662	-3.5777
61	0.679	-3.3683
62	0.695	-3.1638
63	0.711	-2.9640
64	0.727	-2.7687
65	0.743	-2.5777
66	0.761	-2.3683
67	0.779	-2.1638
68	0.798	-1.9640
69	0.816	-1.7687
70	0.834	-1.5777
71	0.854	-1.3683
72	0.875	-1.1638
73	0.895	-0.9640
74	0.915	-0.7687
75	0.936	-0.5777
76	0.949	-0.4590
77	0.961	-0.3420
78	0.974	-0.2265
79	0.987	-0.1125
80	1.000	0.0000
81	1.000	0.0000
82	1.000	0.0000
83	1.000	0.0000
84	1.000	0.0000
85	1.000	0.0000
86	1.000	0.0000
87	1.000	0.0000
88	1.000	0.0000
89	1.000	0.0000
90	1.000	0.0000
91	1.000	0.0000
92	1.000	0.0000

KEZG (FM)  
CH 246 C3  
Calico Rock, AR

FIGURE 11:  
Directional Antenna Values

93	1.000	0.0000
94	1.000	0.0000
95	1.000	0.0000
96	1.000	0.0000
97	1.000	0.0000
98	1.000	0.0000
99	1.000	0.0000
100	1.000	0.0000
101	1.000	0.0000
102	1.000	0.0000
103	1.000	0.0000
104	1.000	0.0000
105	1.000	0.0000
106	1.000	0.0000
107	1.000	0.0000
108	1.000	0.0000
109	1.000	0.0000
110	1.000	0.0000
111	1.000	0.0000
112	1.000	0.0000
113	1.000	0.0000
114	1.000	0.0000
115	1.000	0.0000
116	1.000	0.0000
117	1.000	0.0000
118	1.000	0.0000
119	1.000	0.0000
120	1.000	0.0000
121	1.000	0.0000
122	1.000	0.0000
123	1.000	0.0000
124	1.000	0.0000
125	1.000	0.0000
126	1.000	0.0000
127	1.000	0.0000
128	1.000	0.0000
129	1.000	0.0000
130	1.000	0.0000
131	1.000	0.0000
132	1.000	0.0000
133	1.000	0.0000
134	1.000	0.0000
135	1.000	0.0000
136	1.000	0.0000
137	1.000	0.0000
138	1.000	0.0000
139	1.000	0.0000

KEZG (FM)  
CH 246 C3  
Calico Rock, AR

FIGURE 11:  
Directional Antenna Values

140	1.000	0.0000
141	1.000	0.0000
142	1.000	0.0000
143	1.000	0.0000
144	1.000	0.0000
145	1.000	0.0000
146	1.000	0.0000
147	1.000	0.0000
148	1.000	0.0000
149	1.000	0.0000
150	1.000	0.0000
151	1.000	0.0000
152	1.000	0.0000
153	1.000	0.0000
154	1.000	0.0000
155	1.000	0.0000
156	1.000	0.0000
157	1.000	0.0000
158	1.000	0.0000
159	1.000	0.0000
160	1.000	0.0000
161	1.000	0.0000
162	1.000	0.0000
163	1.000	0.0000
164	1.000	0.0000
165	1.000	0.0000
166	1.000	0.0000
167	1.000	0.0000
168	1.000	0.0000
169	1.000	0.0000
170	1.000	0.0000
171	1.000	0.0000
172	1.000	0.0000
173	1.000	0.0000
174	1.000	0.0000
175	1.000	0.0000
176	1.000	0.0000
177	1.000	0.0000
178	1.000	0.0000
179	1.000	0.0000
180	1.000	0.0000
181	1.000	0.0000
182	1.000	0.0000
183	1.000	0.0000
184	1.000	0.0000
185	1.000	0.0000
186	1.000	0.0000



KEZG (FM)  
CH 246 C3  
Calico Rock, AR

FIGURE 11:  
Directional Antenna Values

187	1.000	0.0000
188	1.000	0.0000
189	1.000	0.0000
190	1.000	0.0000
191	1.000	0.0000
192	1.000	0.0000
193	1.000	0.0000
194	1.000	0.0000
195	1.000	0.0000
196	1.000	0.0000
197	1.000	0.0000
198	1.000	0.0000
199	1.000	0.0000
200	1.000	0.0000
201	1.000	0.0000
202	1.000	0.0000
203	1.000	0.0000
204	1.000	0.0000
205	1.000	0.0000
206	1.000	0.0000
207	1.000	0.0000
208	1.000	0.0000
209	1.000	0.0000
210	1.000	0.0000
211	1.000	0.0000
212	1.000	0.0000
213	1.000	0.0000
214	1.000	0.0000
215	1.000	0.0000
216	1.000	0.0000
217	1.000	0.0000
218	1.000	0.0000
219	1.000	0.0000
220	1.000	0.0000
221	1.000	0.0000
222	1.000	0.0000
223	1.000	0.0000
224	1.000	0.0000
225	1.000	0.0000
226	1.000	0.0000
227	1.000	0.0000
228	1.000	0.0000
229	1.000	0.0000
230	1.000	0.0000
231	1.000	0.0000
232	1.000	0.0000
233	1.000	0.0000

KEZG (FM)  
CH 246 C3  
Calico Rock, AR

FIGURE 11:  
Directional Antenna Values

234	1.000	0.0000
235	1.000	0.0000
236	1.000	0.0000
237	1.000	0.0000
238	1.000	0.0000
239	1.000	0.0000
240	1.000	0.0000
241	1.000	0.0000
242	1.000	0.0000
243	1.000	0.0000
244	1.000	0.0000
245	1.000	0.0000
246	1.000	0.0000
247	1.000	0.0000
248	1.000	0.0000
249	1.000	0.0000
250	1.000	0.0000
251	1.000	0.0000
252	1.000	0.0000
253	1.000	0.0000
254	1.000	0.0000
255	1.000	0.0000
256	1.000	0.0000
257	1.000	0.0000
258	1.000	0.0000
259	1.000	0.0000
260	1.000	0.0000
261	1.000	0.0000
262	1.000	0.0000
263	1.000	0.0000
264	1.000	0.0000
265	1.000	0.0000
266	1.000	0.0000
267	1.000	0.0000
268	1.000	0.0000
269	1.000	0.0000
270	1.000	0.0000
271	1.000	0.0000
272	1.000	0.0000
273	1.000	0.0000
274	1.000	0.0000
275	1.000	0.0000
276	1.000	0.0000
277	1.000	0.0000
278	1.000	0.0000
279	1.000	0.0000
280	1.000	0.0000

KEZG (FM)  
CH 246 C3  
Calico Rock, AR

FIGURE 11:  
Directional Antenna Values

281	1.000	0.0000
282	1.000	0.0000
283	1.000	0.0000
284	1.000	0.0000
285	1.000	0.0000
286	1.000	0.0000
287	1.000	0.0000
288	1.000	0.0000
289	1.000	0.0000
290	1.000	0.0000
291	1.000	0.0000
292	1.000	0.0000
293	1.000	0.0000
294	1.000	0.0000
295	1.000	0.0000
296	1.000	0.0000
297	1.000	0.0000
298	1.000	0.0000
299	1.000	0.0000
300	1.000	0.0000
301	1.000	0.0000
302	1.000	0.0000
303	1.000	0.0000
304	1.000	0.0000
305	1.000	0.0000
306	0.983	-0.1485
307	0.966	-0.2996
308	0.949	-0.4534
309	0.932	-0.6099
310	0.915	-0.7693
311	0.895	-0.9603
312	0.875	-1.1556
313	0.856	-1.3554
314	0.836	-1.5599
315	0.816	-1.7693
316	0.802	-1.9199
317	0.788	-2.0731
318	0.774	-2.2290
319	0.760	-2.3878
320	0.746	-2.5496
321	0.740	-2.6112
322	0.735	-2.6733
323	0.730	-2.7359
324	0.725	-2.7989
325	0.719	-2.8623
326	0.708	-2.9937
327	0.698	-3.1270

KEZG (FM)  
CH 246 C3  
Calico Rock, AR

FIGURE 11:  
Directional Antenna Values

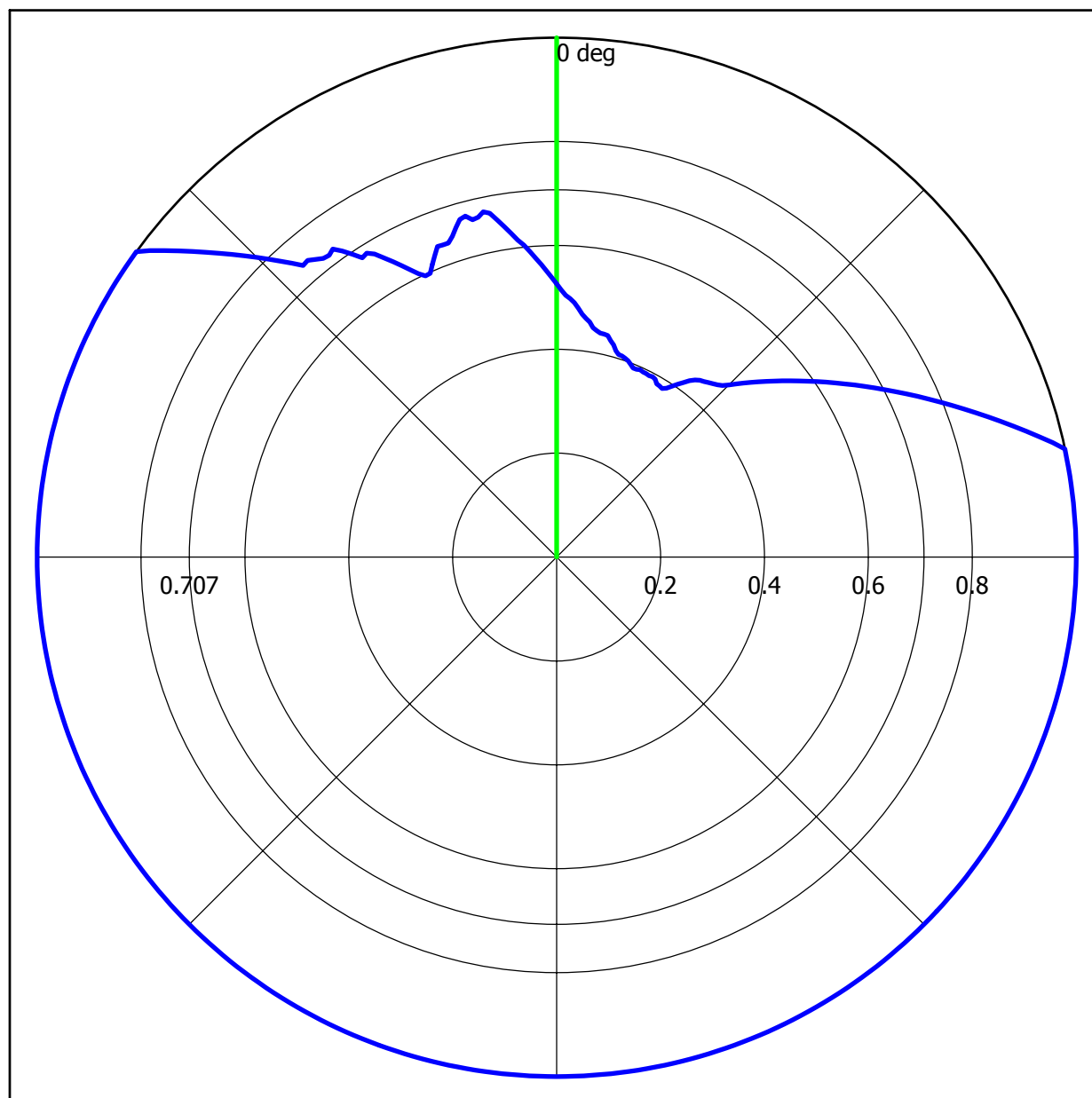
328	0.687	-3.2625
329	0.676	-3.4000
330	0.665	-3.5398
331	0.652	-3.7192
332	0.638	-3.9024
333	0.624	-4.0894
334	0.611	-4.2806
335	0.597	-4.4762
336	0.606	-4.3540
337	0.614	-4.2336
338	0.623	-4.1148
339	0.631	-3.9976
340	0.640	-3.8819
341	0.648	-3.7742
342	0.656	-3.6678
343	0.664	-3.5627
344	0.672	-3.4588
345	0.680	-3.3562
346	0.675	-3.4091
347	0.671	-3.4623
348	0.667	-3.5158
349	0.663	-3.5697
350	0.659	-3.6239
351	0.645	-3.8069
352	0.631	-3.9939
353	0.618	-4.1850
354	0.604	-4.3804
355	0.590	-4.5803
356	0.577	-4.7713
357	0.565	-4.9666
358	0.552	-5.1664
359	0.539	-5.3709

# Antenna Pattern (Azimuth)

## KEZG (FM) CH 246 C3

Calico Rock, AR

FIGURE 12



Degrees	Field	Degrees	Field	Degrees	Field	Degrees	Field
000	0.526	090	1.000	180	1.000	270	1.000
010	0.443	100	1.000	190	1.000	280	1.000
020	0.402	110	1.000	200	1.000	290	1.000
030	0.385	120	1.000	210	1.000	300	1.000
040	0.441	130	1.000	220	1.000	310	0.915
050	0.526	140	1.000	230	1.000	320	0.746
060	0.662	150	1.000	240	1.000	330	0.665
070	0.834	160	1.000	250	1.000	340	0.640
080	1.000	170	1.000	260	1.000	350	0.659

KEZG (FM)  
Ch 246 C3  
Calico Rock, AR

FIGURE 13

