

WEZJFM prop
Latitude: 36-44-43 N
Longitude: 084-11-24 W
ERP: 6.20 kW
Channel: 282
Frequency: 104.3 MHz
AMSL Height: 556.0 m
HAAT: 200.0 m
Horiz. Pattern: Directional
Vert. Pattern: No
Prop Model: FCC Curves

Exhibit 22.1 Coverage Area Study

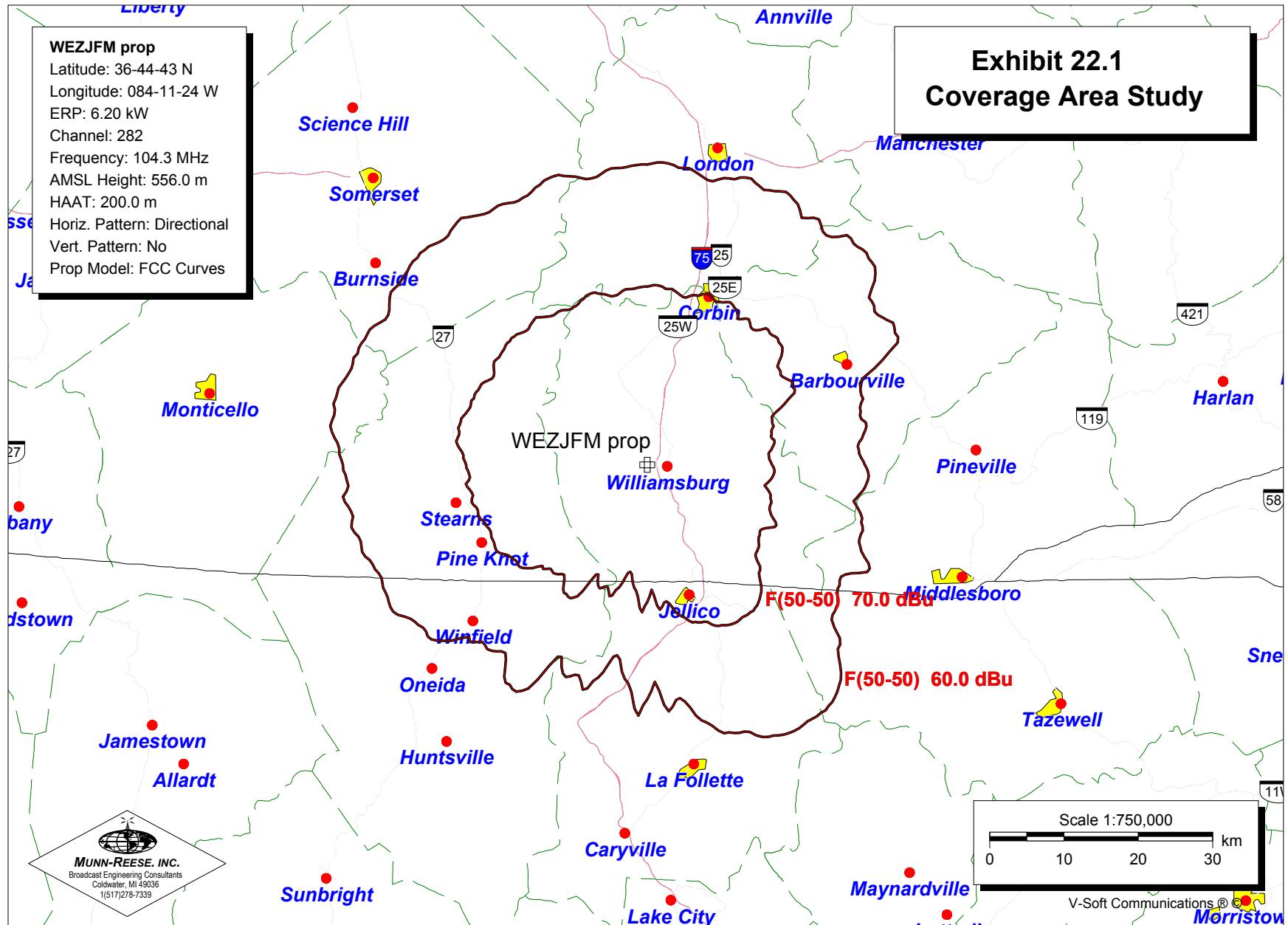


EXHIBIT 22.2

TABULATION OF POPULATION AND AREA

| <u>CONTOUR</u> | <u>AREA</u> | <u>POPULATION</u> |
|-----------------------|--------------------------|--------------------------|
| 3.16 mV/m | 1,505.19 km ² | 45,045 |
| 1.00 mV/m | 4,319.44 km ² | 114,860 |

The population within contours were determined by superimposing the desired contours onto U.S. Standard Civil Division maps of the 2000 Census, and assuming population centroid distribution within each minor civil division. The data was computer generated using the Probe II™ program from V-Soft™ Communications.

The computer generated contours were based on the average distance to the 60 dBu and 70 dBu service contour using 360 equally spaced radials.