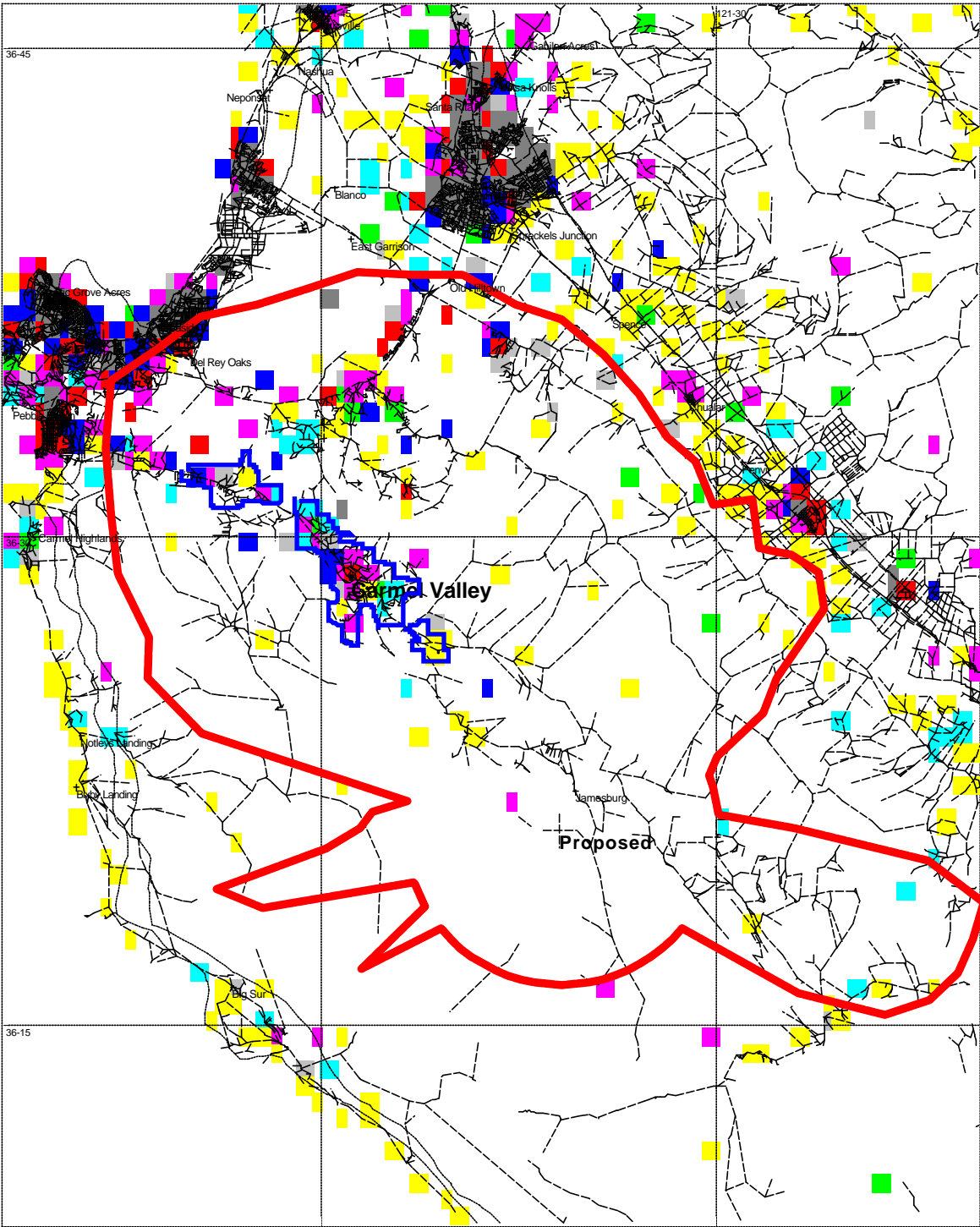


# Exhibit 4 Carmel Valley 290A CityGrade



The 70 dBu contour covers the entire Carmel Valley

Scale 1:362200

10 Km

- |               |                |                |                |               |
|---------------|----------------|----------------|----------------|---------------|
| FM City Grade | Highways       | Railroads      | State Borders  | Lat-Lon Grids |
| 1000+ pops    | 500 - 999 pops | 250 - 499 pops | 100 - 249 pops | 75 - 99 pops  |
| 50 - 74 pops  | 25 - 49 pops   | 1 - 24 pops    |                |               |