

Non-Interference Compliance

Regarding Facility id 149125

Channel 276

Description of Exhibit 13 Contents

This exhibit demonstrates that the proposed facility complies with contour overlap and interference protection provisions in all of the applicable rule sections and that this application for a construction permit is in full compliance with 47 C.F.R. § 74.1204.

Let it be noted that should any actual real world interference occur, the applicant acknowledges that it will promptly suspend operation of this translator in accordance with 47 C.F.R. § 74.1203.

Page 2 of this exhibit is an explanation of the method used to demonstrate compliance with contour overlap and interference provisions based on 47 C.F.R. § 74.1204(d), which states:

[A]n application otherwise precluded by this section will be accepted if it can be demonstrated that no actual interference will occur due to intervening terrain, lack of population or such other factors as may be applicable.

Page 3 contains a tabulation of the vertical radiation pattern of the proposed antenna and the minimum ground clearance of the interfering contour based on this pattern.

Pages 4 through 5 include a tabulation of the vertical radiation pattern for the proposed antenna provided by the antenna manufacturer.

Page 6 of this exhibit contains the tabulated data from the interference analysis, which shows all stations whose protected contours come within 50 km of the 34 dBμ F(50,10) contour of the proposed translator. These tabulated values were calculated using data from the FCC's CDBS files and 30 arc second terrain data. The column labeled "Adj" shows the number of channels difference between the entry and the proposed translator. The column labeled "Dist" shows the distance in km. The column labeled "Overlap" shows the area of contour overlap in square kilometers.

Page 7 of this exhibit is a portion of a USGS 1:24,000 scale 7.5 minute quadrangle at full scale with the calculated area of interference overlaid. The sheet includes the quadrangle name and measurement scale at the bottom-left corner (note: "Mt" refers to meters). The area of interference was calculated using the free space equation and 120 radials.

Page 8 of this exhibit is an aerial photo of the vicinity surrounding the proposed translator's tower site.

Compliance with 47 C.F.R. § 74.1204(d)

All authorized second and third adjacent stations with which the proposed translator has contour overlap are tabulated below. Column four show the station's signal level at the proposed translator's tower site, and column five gives the minimum value within the entire standard interfering contour of the proposed translator (100 dBμ for most classes, 94 for class B, 97 for class B1). The minimum second or third adjacent F(50,50) contour within the proposed translator's standard interfering contour was used to calculate the proposed translator's actual "worst-case" interfering contour.

Application_id	File Number	Callsign	Contour at Tower	Min. Contour
1356655	BMLH20100212AAW	WHPT	88.6	88.1
1420438	BLH20111004ADI	WFUS	70.7	70.7
Minimum F(50,50) Contour of Adjacent Station within Proposed Translator's Standard Interfering Contour				70.7

FCC 02-244 at Section II.A.5 states that "when demonstrating that 'no actual interference will occur due to . . . other factors,' pursuant to Section 74.1204(d), an applicant may use the undesired-to-desired signal ratio method." The undesired-to-desired ratio for second and third adjacent stations required by § 74.1204(a) is 40 dB. Since the minimum protected contour strength within the proposed translator's standard interference contour is **70.7 dBμ**, this makes the proposed translator's worst-case interfering contour **110.7 dBμ**. By the free-space equation, this contour is calculated to extend a maximum of **183 m** from the transmit antenna.

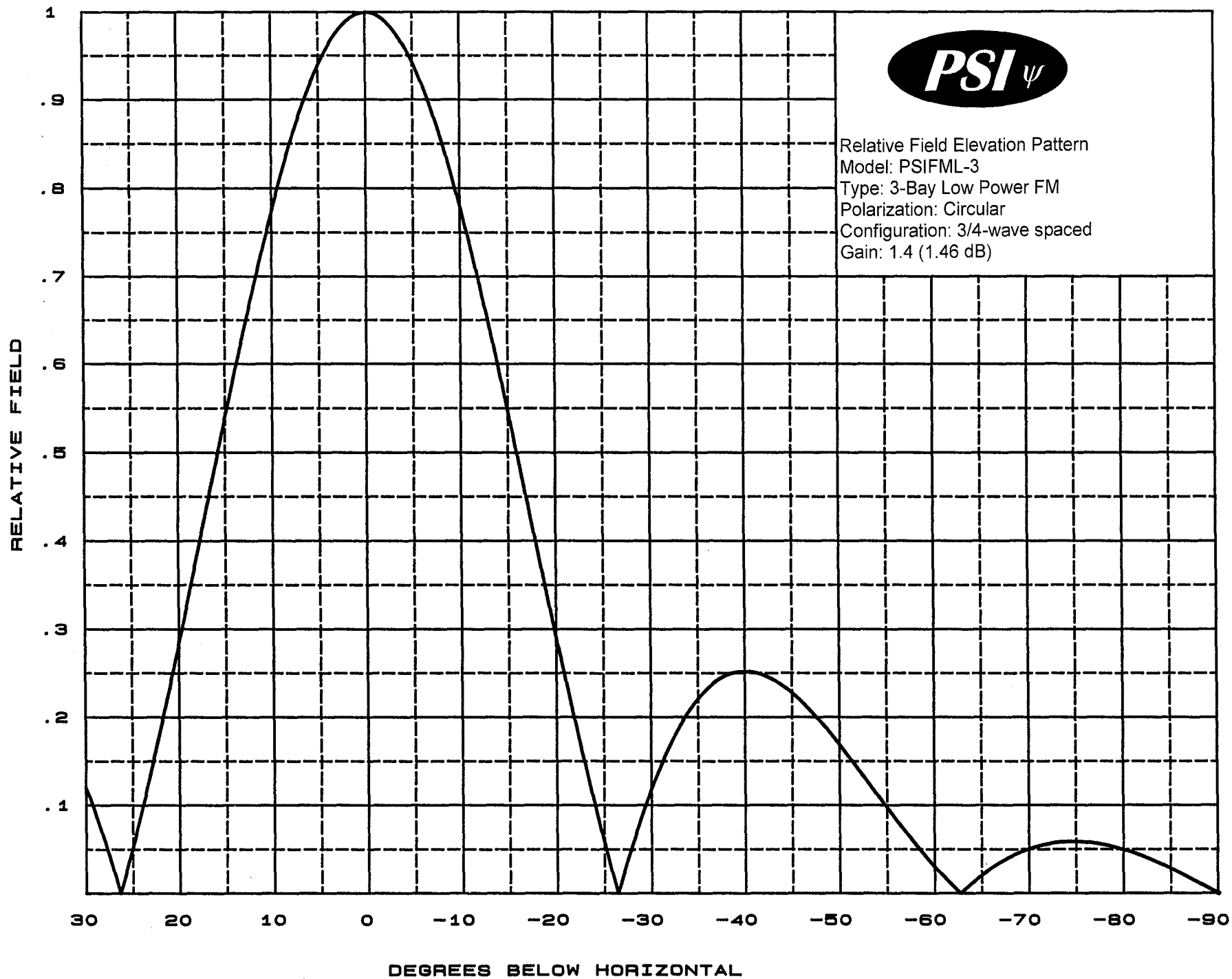
The maximum horizontal plane of the interfering contour was calculated for 120 radials and plotted on the pertinent portion of a USGS quadrangle (page 7 of this exhibit). However, the field strength of the proposed translator's antenna varies with angle of depression from horizontal. The antenna relative fields are tabulated on the following page at 5 degree increments, starting at 5 degrees below horizontal. Antenna relative field strength data was provided and certified by the manufacturer of the proposed antenna. Using a free-space calculation that neglects any loss due to reflection, the vertical ground clearance of the proposed translator's interference contour has been tabulated. As shown on the following page, the area of interference clears the tower ground level (TGL) by **16.4 m** at the lowest point. The applicant has taken into account USGS quadrangles and relevant aerial photography in stating that no structures, except possibly tower support structures, puncture the area of interference. Hence, in accordance with 47 C.F.R. § 74.1204(d) and the clarification provided by the FCC in the decision *Re: Living Way Ministries* (FCC 02-244), a lack of population has been demonstrated within the area of interference and this application is therefore in full compliance with 47 C.F.R. § 74.1204.

Antenna Manufacturer:	PSI
Antenna Model:	FML-3(.75)
CORAGL:	46 m
Maximum ERP:	0.08 kW
Interfering Contour:	110.7 dBμ
Max Int. Contour Distance:	183 m
Min Ground Clearance:	16.4 m

Depression Angle Below Horizontal	Antenna Relative Field	ERP (watts)	Distance to Interfering Contour from Antenna (m)	Horizontal Distance of Interfering Contour from Tower (m)	Vertical Clearance of Interfering Contour above TGL (m)
5	.941	70.8	172.2	171.6	31.0
10	.777	48.3	142.2	140.1	21.3
15	.543	23.6	99.4	96.0	20.3
20	.287	6.6	52.5	49.4	28.0
25	.055	0.2	10.1	9.1	41.7
30	.120	1.2	22.0	19.0	35.0
35	.222	3.9	40.6	33.3	22.7
40	.252	5.1	46.1	35.3	16.4
45	.227	4.1	41.5	29.4	16.6
50	.168	2.3	30.8	19.8	22.4
55	.096	0.7	17.6	10.1	31.6
60	.030	0.1	5.5	2.7	41.2
65	.021	0.0	3.8	1.6	42.5
70	.050	0.2	9.2	3.1	37.4
75	.059	0.3	10.8	2.8	35.6
80	.050	0.2	9.2	1.6	37.0
85	.028	0.1	5.1	0.4	40.9
90	.001	0.0	0.2	0.0	45.8
Minimum Clearance above TGL:					16.4 m



Relative Field Elevation Pattern
Model: PSIFML-3
Type: 3-Bay Low Power FM
Polarization: Circular
Configuration: 3/4-wave spaced
Gain: 1.4 (1.46 dB)





Propagation Systems Inc.

Elevation Pattern Tabulation

Antenna: PSIFML-3 Special

Bay spacing: 3/4 wave

Angle	Field	dB	Angle	Field	dB	Angle	Field	dB
-90.0	0.001	-60.000	-50.0	0.168	-15.500	-10.0	0.777	-2.194
-89.0	0.006	-44.795	-49.0	0.181	-14.829	-9.0	0.817	-1.761
-88.0	0.012	-38.775	-48.0	0.194	-14.240	-8.0	0.853	-1.379
-87.0	0.017	-35.329	-47.0	0.206	-13.714	-7.0	0.886	-1.049
-86.0	0.023	-32.869	-46.0	0.217	-13.266	-6.0	0.916	-0.766
-85.0	0.028	-31.047	-45.0	0.227	-12.881	-5.0	0.941	-0.529
-84.0	0.033	-29.622	-44.0	0.235	-12.562	-4.0	0.962	-0.338
-83.0	0.038	-28.467	-43.0	0.242	-12.308	-3.0	0.978	-0.190
-82.0	0.042	-27.510	-42.0	0.248	-12.126	-2.0	0.990	-0.085
-81.0	0.046	-26.705	-41.0	0.251	-12.010	-1.0	0.998	-0.021
-80.0	0.050	-26.073	-40.0	0.252	-11.968	0.0	1.000	0.000
-79.0	0.053	-25.559	-39.0	0.251	-12.004	1.0	0.998	-0.021
-78.0	0.055	-25.169	-38.0	0.248	-12.126	2.0	0.990	-0.085
-77.0	0.057	-24.887	-37.0	0.242	-12.336	3.0	0.978	-0.190
-76.0	0.058	-24.682	-36.0	0.233	-12.657	4.0	0.962	-0.338
-75.0	0.059	-24.614	-35.0	0.222	-13.092	5.0	0.941	-0.529
-74.0	0.059	-24.637	-34.0	0.207	-13.676	6.0	0.916	-0.766
-73.0	0.058	-24.772	-33.0	0.190	-14.432	7.0	0.886	-1.049
-72.0	0.056	-25.027	-32.0	0.170	-15.414	8.0	0.853	-1.379
-71.0	0.054	-25.411	-31.0	0.146	-16.700	9.0	0.817	-1.759
-70.0	0.050	-25.968	-30.0	0.120	-18.427	10.0	0.777	-2.194
-69.0	0.046	-26.733	-29.0	0.090	-20.871	11.0	0.734	-2.683
-68.0	0.041	-27.731	-28.0	0.058	-24.704	12.0	0.689	-3.233
-67.0	0.035	-29.081	-27.0	0.023	-32.754	13.0	0.642	-3.848
-66.0	0.028	-30.954	-26.0	0.015	-36.745	14.0	0.593	-4.534
-65.0	0.021	-33.656	-25.0	0.055	-25.217	15.0	0.543	-5.301
-64.0	0.012	-38.221	-24.0	0.098	-20.213	16.0	0.492	-6.156
-63.0	0.003	-50.816	-23.0	0.142	-16.928	17.0	0.441	-7.116
-62.0	0.007	-42.949	-22.0	0.189	-14.460	18.0	0.389	-8.196
-61.0	0.018	-34.880	-21.0	0.238	-12.484	19.0	0.338	-9.425
-60.0	0.030	-30.546	-20.0	0.287	-10.839	20.0	0.287	-10.834
-59.0	0.042	-27.541	-19.0	0.338	-9.425	21.0	0.238	-12.484
-58.0	0.055	-25.217	-18.0	0.389	-8.199	22.0	0.189	-14.460
-57.0	0.068	-23.307	-17.0	0.441	-7.116	23.0	0.143	-16.919
-56.0	0.082	-21.711	-16.0	0.492	-6.159	24.0	0.098	-20.200
-55.0	0.096	-20.335	-15.0	0.543	-5.301	25.0	0.055	-25.193
-54.0	0.111	-19.124	-14.0	0.593	-4.536	26.0	0.015	-36.745
-53.0	0.125	-18.051	-13.0	0.642	-3.850	27.0	0.023	-32.754
-52.0	0.140	-17.106	-12.0	0.689	-3.234	28.0	0.058	-24.704
-51.0	0.154	-16.253	-11.0	0.734	-2.683	29.0	0.090	-20.871
						30.0	0.120	-18.438

file: FML 3-bay elevation tabulation

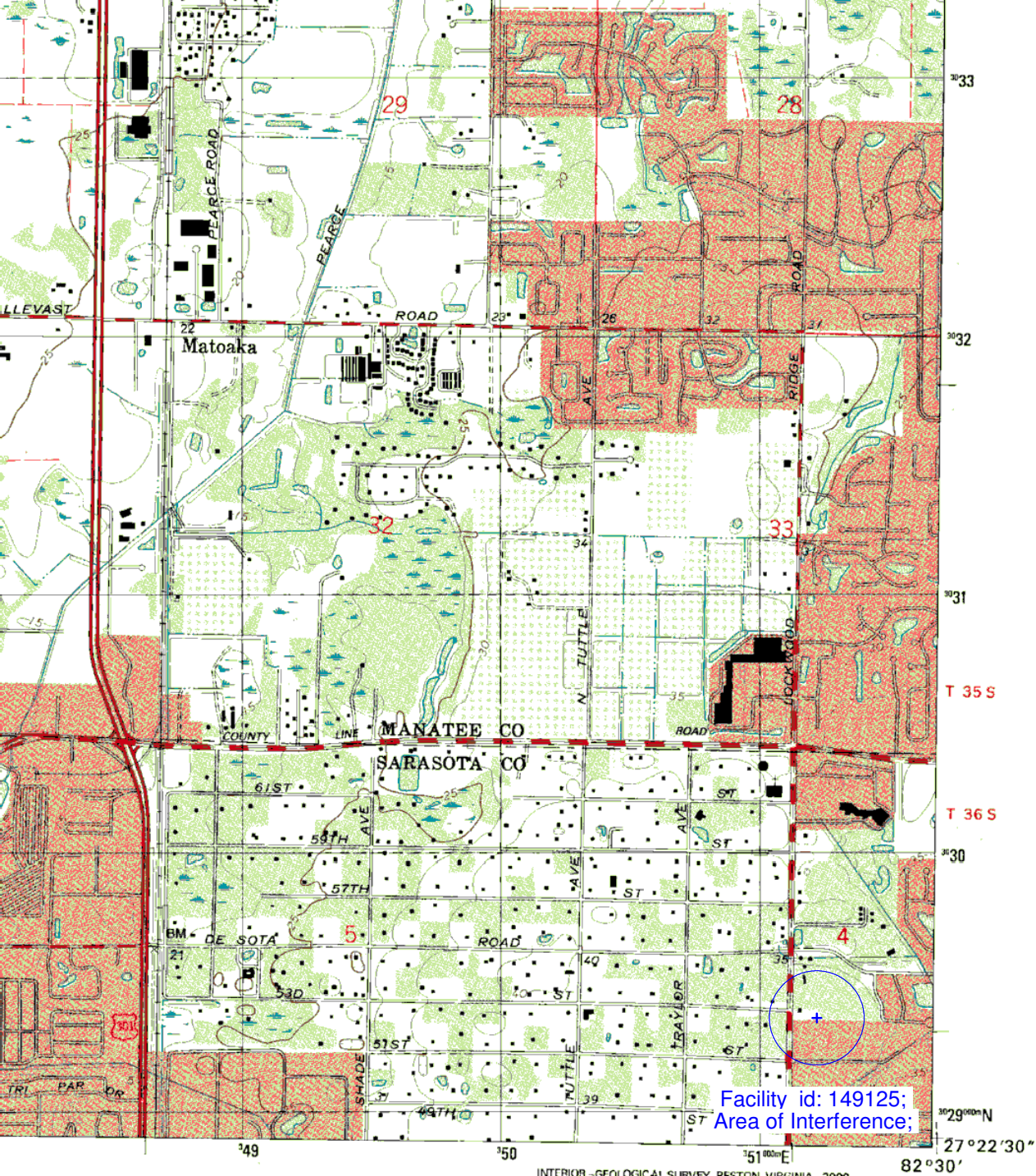
revision: A

Date: 1/28/08

Adjacent Channel Study **For Station NEW, Facility_id: 149125**

Co-channel through third adjacent:

App_id	Fac_id	File_Number	Call	Licensee	Class	City	State	Status	ERP	RCMSL	Chan	Adj	Dist	Overlap
1356655	51986	BMLH-20100212AAW	WHPT	COX RADIO, INC.	C	SARASOTA	FL	LIC	100	520	273	3	25.3	1.2364
1420438	63984	BLH-20111004ADI	WFUS	CITICASTERS LICENSES, INC.	C0	GULFPORT	FL	LIC	66	491	278	2	54.5	1.2364
1551397	139043	BNPFT-20030312AUD	NEW	CALVARY CHAPEL CHURCH, INC.	D	PUNTA GORDA BEA	FL	APP	0.038	76	279	3	56.9	0
1551180	140125	BNPFT-20030314BQV	NEW	CITICASTERS LICENSES, L.P.	D	PORT CHARLOTTE	FL	APP	0.075	34	277	1	57.5	0
1163930	148943	BLFT-20061208ABG	W275AX	GLADES MEDIA COMPANY, LLC	D	FORT MEADE	FL	LIC	0.027	117	275	1	83.6	0
1558686	148943	BMPFT-20130607ABG	W275AX	GLADES MEDIA COMPANY, LLC	D	BARTOW	FL	CP MOD	0.24	182	275	1	85.7	0
1241813	25568	BLH-20071212ABB	WJGO	RENDA BROADCASTING CORP. OF NEVADA	C1	TICE	FL	LIC	96	144	275	1	114.3	0



QUADRANGLE LOCATION

2	3	1 Anna Maria
		2 Palmetto
		3 Parrish
	5	4 Bradenton Beach
		5 Lorraine
		6
7	8	7 Sarasota
		8 Bee Ridge

7.5' QUADRANGLE NAMES

INTERIOR - GEOLOGICAL SURVEY, RESTON, VIRGINIA - 2000

ROAD CLASSIFICATION

Primary highway
hard surface
Secondary highway
hard surface
Light-duty road, hard or
improved surface
Unimproved road

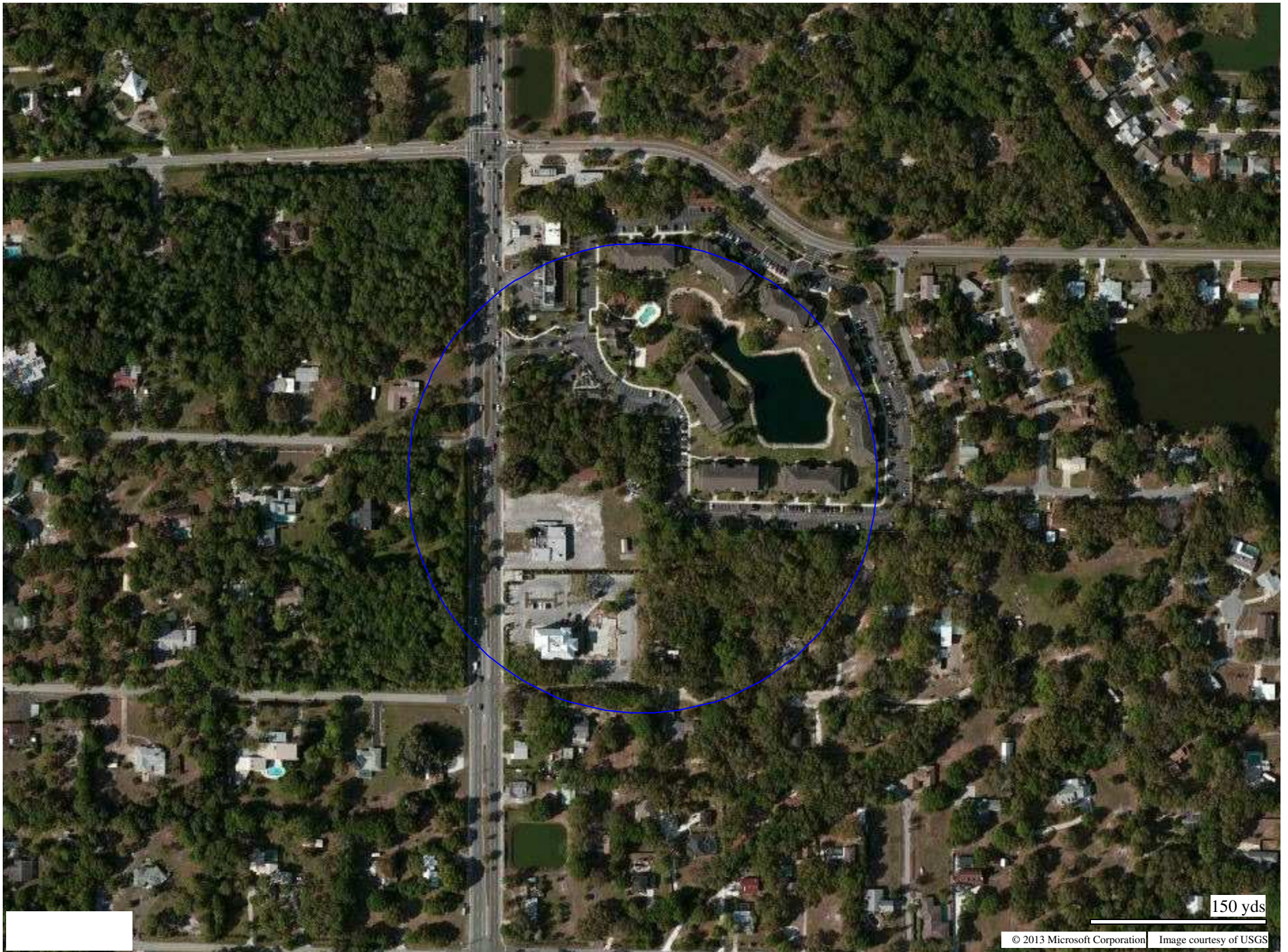
Interstate Route U.S. Route State Route

BRADENTON, FL

1994

NIMA 4438 I NE-SERIES V847





150 yds

© 2013 Microsoft Corporation Image courtesy of USGS