

CITY OF LICENSE
CALL LETTERS
FACILITY ID
PREPARED FOR
VERSION
JOB

Watkins Glen, NY
WRFI
173670
Ithaca Community Radio, Inc.
' .0
111034

CONSOLIDATED

ENGINEERING EXHIBIT

FCC Form 340 - Section VII - FM Engineering

ENGINEERING STATEMENT
PROPOSED MINOR-MODIFICATION OF CP 20071018AGB
WRFI, Watkins Glen, NY

This proposal is for a minor-modification of Construction Permit BNPED-20071018AGB - WRFI, Watkins Glen, NY, held by Ithaca Community Radio, Inc. (ICR). The minor modification proposes to modify the site, antenna height, antenna pattern and ERP of the CP.

As the CP expires on August 27, 2011, **expedited processing of this application is hereby requested.** ICR is ready to construct this facility *immediately* upon approval.

BROWN BROADCAST SERVICES
INCORPORATED

Michael D. Brown

3740 S.W. Comus St.

Portland, Oregon 97219-7418

503-245-6065

Exhibit 16 - Community of License Coverage

Brown Broadcast Services, Inc.
Job: WRFI 07052011db.fmj
Master Database: 2011_Jul_05.fmd
Lat: N42:23:20 Lon: W076:53:27 NAD-27
Scale: 1:200000
Channel: 220 Class: A

rfInvestigator Version 3.4.27
by rfSoftware, Inc.
Date: 7/18/2011 9:57:56 PM
Key:
City Grade
Protected
Co-Channel
1st Adj
2nd/3rd Adj

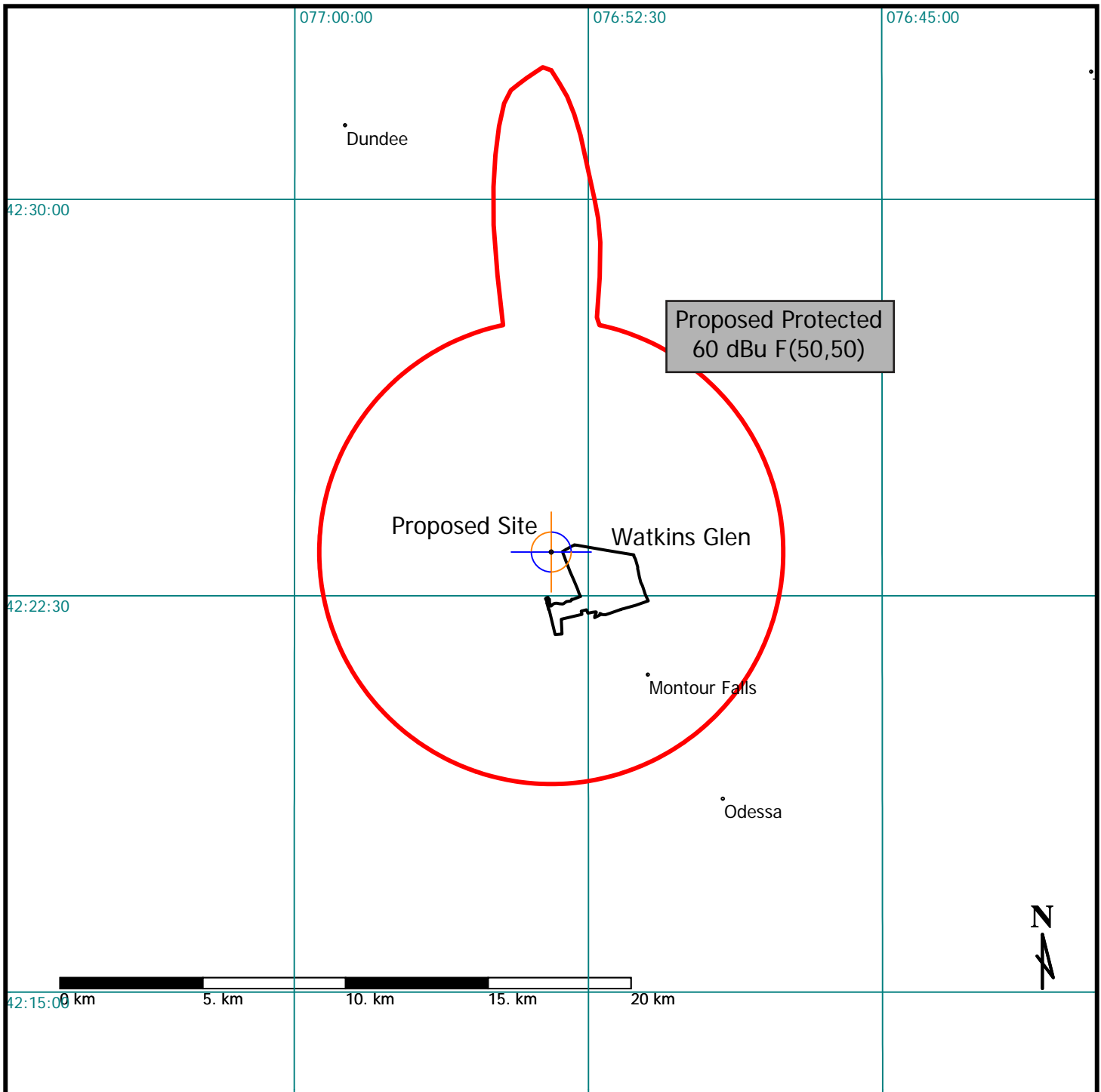


EXHIBIT 18

CONTOUR OVERLAP PROTECTION TO OTHER RESERVED-BAND STATIONS & SPACING REQUIREMENTS TO NON-RESERVED BAND STATIONS

This proposed minor-change meets the contour overlap requirements of §73.509 with respect to all other reserved-band stations.

Domestic reserved-band stations considered:

ID	City	St	Chan	CL	Stat	Prefix	ARN	Dist	Min 207	Clear 207
Co-channel										
WHVM	OWEGO	NY	220	B1	CP	BPED	20100708RNT	50.6	143	-92.4
WHVM	OWEGO	NY	220	A	LIC	BLED	20100610AEC	50.6	115	-64.4
1st Adj. channel										
WICB	ITHACA	NY	219	A	LIC	BLED	20070413AFA	32.8	72	-39.2
WCKR	HORNELL	NY	221	A	LIC	BLH	20030225AAJ	60.8	72	-11.2

This proposed minor-change meets the contour overlap requirements of §73.207 with respect to all non-reserved band stations.

Domestic non-reserved band stations considered:

ID	City	St	Chan	CL	Stat	Prefix	ARN	Dist	Min 207	Clear 207
WSEN-FM	BALDWINSVILLE	NY	221	B1	LIC	BLH	19880615KB	98.8	96	2.8

All contour calculations were made using the methods and procedures described in 47 CFR §73.313(c). Areas were calculated using a spline integration in one-degree increments. Population totals were calculated by testing each U.S. Census-defined block-centroid population point in the region with a point-in-polygon method. The population was summed for each point within the polygon using data from the 2000 Census.

FMOver calculations were done using V-Soft FM Commander software, using “HAAT method 0 (zero)”, 51 data points per radial, and the FCC-modified version of the NGDC 30 second terrain database. According to V-Soft, this combination results in “astounding agreement” with FCC software.

BROWN BROADCAST SERVICES INCORPORATED

Michael D. Brown

3740 S.W. Comus St.

Portland, Oregon 97219-7418

503-245-6065

Exhibit 18a - Co-channel Contour Protection

Brown Broadcast Services, Inc.
Job: WRFI 07052011db.fmj
Master Database: 2011_Jul_05.fmd
Lat: N42:23:20 Lon: W076:53:27 NAD-27
Scale: 1:750000
Channel: 220 Class: A

rfInvestigator Version 3.4.27
by rfSoftware, Inc.
Date: 7/18/2011 10:05:26 PM

PROPOSED
Protected: 60dBu F(50,50)
Interfering: 40dBu F(50,10)
AFFECTED
Protected: 60dBu F(50,50)
Interfering: 40dBu F(50,10)

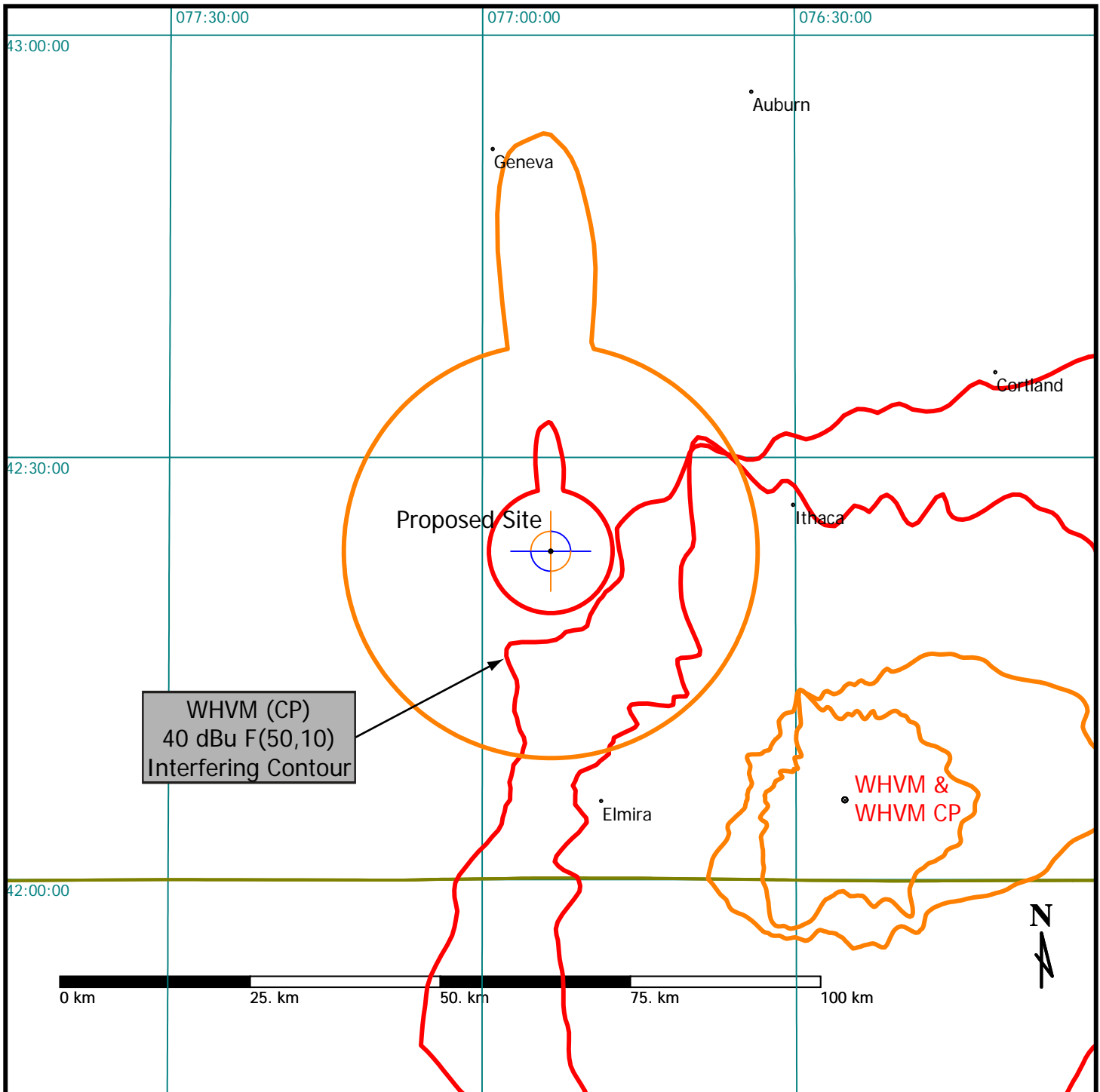


Exhibit 18b - 1st-Adjacent Channel Contour Protection

Brown Broadcast Services, Inc.
Job: WRFI 07052011db.fmj
Master Database: 2011_Jul_05.fmd
Lat: N42:23:20 Lon: W076:53:27 NAD-27
Scale: 1:750000
Channel: 220 Class: A

rfInvestigator Version 3.4.27
by rfSoftware, Inc.
Date: 7/18/2011 10:17:12 PM

PROPOSED
Protected: 60dBu F(50,50)
Interfering: 54dBu F(50,10)
AFFECTED
Protected: 60dBu F(50,50)
Interfering: 54dBu F(50,10)

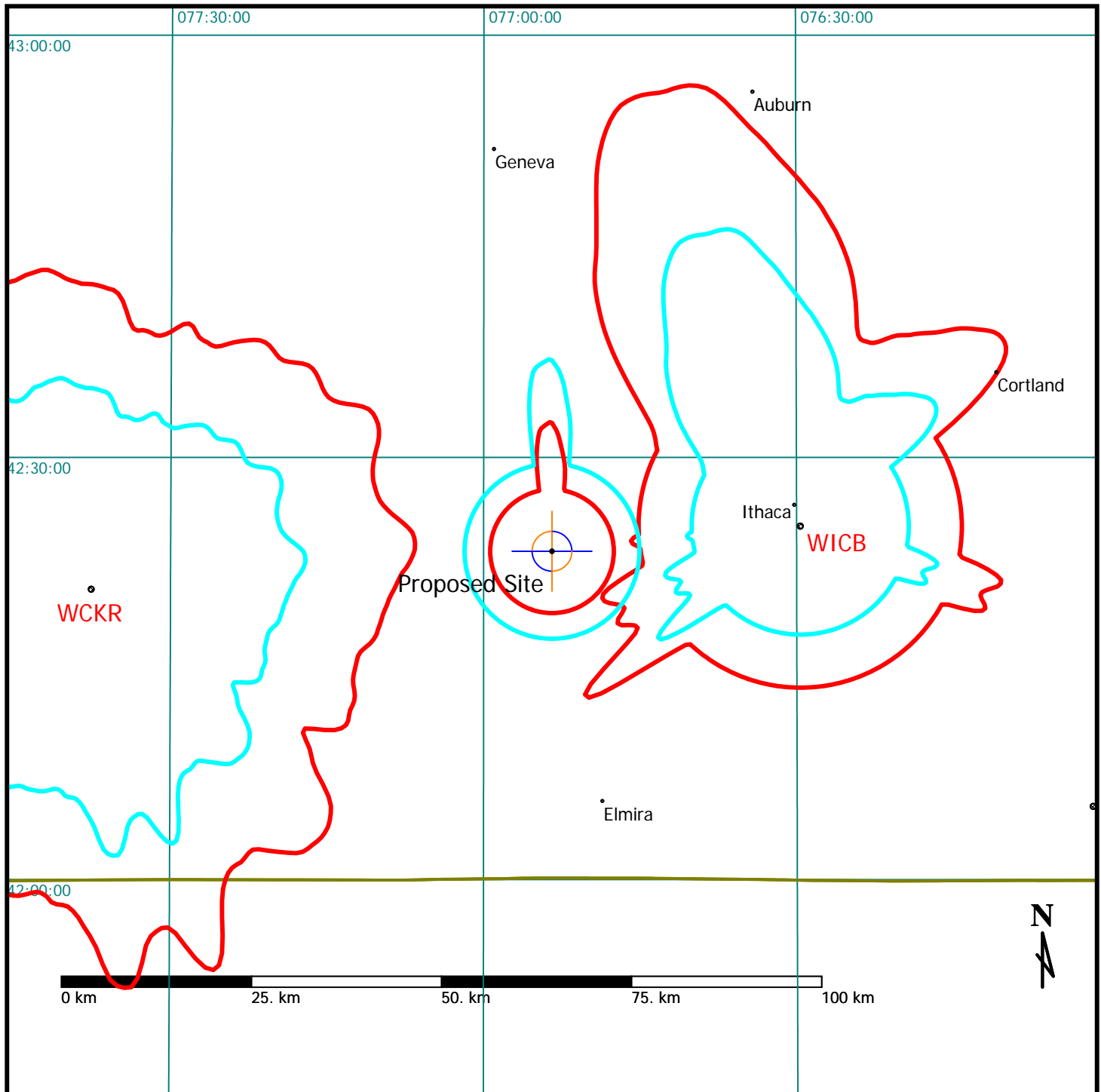


EXHIBIT 18c

FMOver Analysis -

WRFI (CP) Proposed Minor Mod. vs. WICB, Ithaca, NY

07-22-2011

Terrain Data: FCC NGDC 30 Sec

FMOver Analysis

WRFI CP Mod. proposed

WICB BLED20070413AFA

Channel = 220A
Max ERP = 0.42 kW
RCAMSL = 267.12 M
N. Lat. 42 23 19.6
W. Lng. 76 53 26.8
Protected
60 dBu

Channel = 219A
Max ERP = 4.1 kW
RCAMSL = 393.5 M
N. Lat. 42 25 07.0
W. Lng. 76 29 39.0
Interfering
54 dBu

Azimuth (degrees)	ERP (kW)	HAAT (m)	Dist (km)	Azimuth (degrees)	ERP (kW)	HAAT (m)	Dist (km)	Actual (dBu)	IX (km)
039.0	000.4200	-0148.7	008.1	276.3	004.1000	0019.3	027.7	49.60	
040.0	000.4200	-0149.9	008.1	276.2	004.1000	0019.3	027.6	49.67	
041.0	000.4200	-0150.2	008.1	276.0	004.1000	0019.4	027.5	49.74	
042.0	000.4200	-0149.3	008.1	275.8	004.1000	0019.4	027.3	49.81	
043.0	000.4200	-0146.8	008.1	275.6	004.1000	0019.5	027.2	49.88	
044.0	000.4200	-0142.5	008.1	275.5	004.1000	0019.6	027.1	49.94	
045.0	000.4200	-0136.1	008.1	275.3	004.1000	0019.6	027.0	50.01	
046.0	000.4200	-0128.0	008.1	275.1	004.1000	0019.7	026.9	50.07	
047.0	000.4200	-0118.7	008.1	274.9	004.1000	0019.7	026.8	50.14	
048.0	000.4200	-0109.3	008.1	274.7	004.1000	0019.8	026.7	50.20	
049.0	000.4200	-0101.1	008.1	274.4	004.1000	0019.9	026.6	50.26	
050.0	000.4200	-0094.6	008.1	274.2	004.1000	0020.0	026.5	50.32	
051.0	000.4200	-0090.2	008.1	274.0	004.1000	0020.1	026.4	50.39	
052.0	000.4200	-0087.9	008.1	273.8	004.1000	0020.4	026.3	50.44	
053.0	000.4200	-0088.1	008.1	273.5	004.1000	0020.7	026.2	50.50	
054.0	000.4200	-0090.8	008.1	273.3	004.1000	0020.9	026.1	50.56	
055.0	000.4200	-0096.2	008.1	273.1	004.1000	0020.9	026.0	50.62	
056.0	000.4200	-0103.4	008.1	272.8	004.1000	0021.1	025.9	50.67	
057.0	000.4200	-0111.8	008.1	272.6	004.1000	0021.4	025.9	50.72	
058.0	000.4200	-0120.1	008.1	272.3	004.1000	0021.8	025.8	50.78	
059.0	000.4200	-0127.3	008.1	272.0	004.1000	0022.2	025.7	50.83	
060.0	000.4200	-0133.2	008.1	271.8	004.1000	0022.6	025.6	50.87	
061.0	000.4200	-0137.7	008.1	271.5	004.1000	0023.0	025.6	50.92	
062.0	000.4200	-0140.8	008.1	271.2	004.1000	0023.4	025.5	50.97	
063.0	000.4200	-0142.5	008.1	270.9	004.1000	0023.8	025.4	51.01	
064.0	000.4200	-0143.2	008.1	270.6	004.1000	0024.2	025.4	51.05	
065.0	000.4200	-0143.9	008.1	270.4	004.1000	0024.7	025.3	51.09	
066.0	000.4200	-0144.9	008.1	270.1	004.1000	0025.1	025.2	51.13	
067.0	000.4200	-0145.6	008.1	269.8	004.1000	0025.6	025.2	51.17	
068.0	000.4200	-0146.3	008.1	269.5	004.1000	0026.1	025.1	51.21	
069.0	000.4200	-0146.2	008.1	269.2	004.1000	0026.5	025.1	51.24	
070.0	000.4200	-0146.9	008.1	268.9	004.1000	0027.0	025.0	51.27	
071.0	000.4200	-0148.2	008.1	268.6	004.1000	0027.4	025.0	51.30	
072.0	000.4200	-0149.3	008.1	268.2	004.1000	0028.4	024.9	51.33	
073.0	000.4200	-0151.0	008.1	267.9	004.1000	0029.3	024.9	51.35	
074.0	000.4200	-0153.5	008.1	267.6	004.1000	0030.3	024.9	51.45	
075.0	000.4200	-0156.3	008.1	267.3	004.1000	0031.3	024.8	51.72	
076.0	000.4200	-0159.7	008.1	267.0	004.1000	0032.3	024.8	51.97	

BROWN BROADCAST SERVICES
INCORPORATED

Michael D. Brown

3740 S.W. Comus St.

Portland, Oregon 97219-7418

503-245-6065

Azimuth (degrees)	ERP (kW)	HAAT (m)	Dist (km)	Azimuth (degrees)	ERP (kW)	HAAT (m)	Dist (km)	Actual (dBu)	IX (km)
077.0	000.4200	-0163.9	008.1	266.6	004.1000	0033.2	024.8	52.20	
078.0	000.4200	-0168.3	008.1	266.3	004.1000	0034.1	024.8	52.43	
079.0	000.4200	-0171.9	008.1	266.0	004.1000	0035.0	024.8	52.65	
080.0	000.4200	-0175.3	008.1	265.7	004.1000	0035.4	024.7	52.76	
081.0	000.4200	-0178.0	008.1	265.3	004.1000	0035.6	024.7	52.81	
082.0	000.4200	-0178.9	008.1	265.0	004.1000	0035.6	024.7	52.82	
083.0	000.4200	-0179.4	008.1	264.7	004.1000	0035.5	024.7	52.80	
084.0	000.4200	-0179.7	008.1	264.4	004.1000	0035.2	024.7	52.74	
085.0	000.4200	-0180.0	008.1	264.0	004.1000	0034.9	024.7	52.65	
086.0	000.4200	-0178.4	008.1	263.7	004.1000	0034.3	024.7	52.52	
087.0	000.4200	-0176.5	008.1	263.4	004.1000	0033.6	024.7	52.35	
088.0	000.4200	-0174.3	008.1	263.0	004.1000	0032.7	024.7	52.12	
089.0	000.4200	-0172.7	008.1	262.7	004.1000	0031.5	024.8	51.83	
090.0	000.4200	-0172.3	008.1	262.4	004.1000	0030.3	024.8	51.53	
091.0	000.4200	-0172.0	008.1	262.1	004.1000	0029.6	024.8	51.43	
092.0	000.4200	-0171.6	008.1	261.7	004.1000	0028.9	024.8	51.42	
093.0	000.4200	-0171.7	008.1	261.4	004.1000	0028.3	024.8	51.40	
094.0	000.4200	-0171.3	008.1	261.1	004.1000	0027.9	024.9	51.38	
095.0	000.4200	-0170.6	008.1	260.8	004.1000	0027.6	024.9	51.36	
096.0	000.4200	-0169.2	008.1	260.5	004.1000	0027.3	024.9	51.33	
097.0	000.4200	-0166.7	008.1	260.1	004.1000	0027.1	025.0	51.31	
098.0	000.4200	-0163.5	008.1	259.8	004.1000	0027.1	025.0	51.28	
099.0	000.4200	-0159.8	008.1	259.5	004.1000	0027.2	025.1	51.25	
100.0	000.4200	-0158.4	008.1	259.2	004.1000	0027.5	025.1	51.21	
101.0	000.4200	-0159.0	008.1	258.9	004.1000	0027.7	025.2	51.18	
102.0	000.4200	-0159.8	008.1	258.6	004.1000	0027.7	025.2	51.14	
103.0	000.4200	-0159.1	008.1	258.3	004.1000	0027.8	025.3	51.10	
104.0	000.4200	-0155.0	008.1	258.0	004.1000	0027.9	025.3	51.06	
105.0	000.4200	-0149.6	008.1	257.8	004.1000	0028.0	025.4	51.02	
106.0	000.4200	-0144.0	008.1	257.5	004.1000	0028.3	025.5	50.98	
107.0	000.4200	-0138.3	008.1	257.2	004.1000	0028.6	025.5	50.93	
108.0	000.4200	-0132.9	008.1	256.9	004.1000	0029.1	025.6	50.88	
109.0	000.4200	-0126.7	008.1	256.7	004.1000	0029.7	025.7	50.84	
110.0	000.4200	-0121.8	008.1	256.4	004.1000	0030.3	025.8	50.86	
111.0	000.4200	-0118.3	008.1	256.1	004.1000	0031.0	025.8	50.97	
112.0	000.4200	-0115.0	008.1	255.9	004.1000	0031.6	025.9	51.07	
113.0	000.4200	-0111.2	008.1	255.6	004.1000	0032.3	026.0	51.17	
114.0	000.4200	-0105.7	008.1	255.4	004.1000	0033.0	026.1	51.28	
115.0	000.4200	-0099.0	008.1	255.1	004.1000	0033.7	026.2	51.39	
116.0	000.4200	-0091.1	008.1	254.9	004.1000	0034.5	026.3	51.52	
117.0	000.4200	-0082.0	008.1	254.7	004.1000	0035.3	026.4	51.65	
118.0	000.4200	-0072.7	008.1	254.5	004.1000	0036.3	026.5	51.80	
119.0	000.4200	-0064.6	008.1	254.2	004.1000	0037.2	026.6	51.94	
120.0	000.4200	-0057.9	008.1	254.0	004.1000	0038.1	026.7	52.08	
121.0	000.4200	-0052.4	008.1	253.8	004.1000	0039.0	026.8	52.21	
122.0	000.4200	-0047.0	008.1	253.6	004.1000	0039.8	026.9	52.32	
123.0	000.4200	-0041.4	008.1	253.4	004.1000	0040.6	027.0	52.43	
124.0	000.4200	-0035.6	008.1	253.2	004.1000	0041.4	027.1	52.54	
125.0	000.4200	-0029.8	008.1	253.0	004.1000	0042.2	027.2	52.63	
126.0	000.4200	-0024.5	008.1	252.9	004.1000	0043.0	027.3	52.72	
127.0	000.4200	-0019.9	008.1	252.7	004.1000	0043.8	027.4	52.81	
128.0	000.4200	-0016.6	008.1	252.5	004.1000	0044.5	027.6	52.89	

BROWN BROADCAST SERVICES
INCORPORATED

Michael D. Brown

3740 S.W. Comus St.

Portland, Oregon 97219-7418

503-245-6065

Page 3 of 4

07-22-2011

Terrain Data: FCC NGDC 30 Sec

FMOver Analysis

WICB BLED20070413AFA

WRFI CP Mod. proposed

Channel = 219A
Max ERP = 4.1 kW
RCAMSL = 393.5 M
N. Lat. 42 25 07.0
W. Lng. 76 29 39.0
Protected
60 dBu

Channel = 220A
Max ERP = 0.42 kW
RCAMSL = 267.12 M
N. Lat. 42 23 19.6
W. Lng. 76 53 26.8
Interfering
54 dBu

Azimuth (degrees)	ERP (kW)	HAAT (m)	Dist (km)	Azimuth (degrees)	ERP (kW)	HAAT (m)	Dist (km)	Actual (dBu)	IX (km)
219.0	004.1000	0009.0	014.3	108.1	000.4200	-0132.1	024.9	41.44	
220.0	004.1000	0012.2	014.3	107.9	000.4200	-0133.4	024.7	41.59	
221.0	004.1000	0016.9	014.3	107.7	000.4200	-0134.6	024.5	41.75	
222.0	004.1000	0022.0	014.3	107.5	000.4200	-0135.9	024.3	41.91	
223.0	004.1000	0026.6	014.3	107.2	000.4200	-0137.2	024.0	42.06	
224.0	004.1000	0030.6	014.4	107.2	000.4200	-0137.2	023.7	42.26	
225.0	004.1000	0034.5	015.2	108.7	000.4200	-0128.3	023.1	42.69	
226.0	004.1000	0039.3	016.3	110.9	000.4200	-0118.5	022.4	43.22	
227.0	004.1000	0045.5	017.7	114.0	000.4200	-0105.5	021.6	43.86	
228.0	004.1000	0053.9	019.5	118.1	000.4200	-0071.7	020.6	44.58	
229.0	004.1000	0064.6	021.2	122.4	000.4200	-0044.7	019.8	45.27	
230.0	004.1000	0074.8	022.7	126.3	000.4200	-0023.0	019.0	45.87	
231.0	004.1000	0081.1	023.5	128.6	000.4200	-0015.4	018.4	46.36	
232.0	004.1000	0081.7	023.6	128.6	000.4200	-0015.5	018.0	46.70	
233.0	004.1000	0075.8	022.8	125.7	000.4200	-0025.9	017.8	46.85	
234.0	004.1000	0066.7	021.5	121.4	000.4200	-0050.5	017.9	46.78	
235.0	004.1000	0057.3	020.1	116.8	000.4200	-0083.6	018.2	46.55	
236.0	004.1000	0049.6	018.6	112.4	000.4200	-0113.5	018.6	46.18	
237.0	004.1000	0044.8	017.6	109.3	000.4200	-0125.2	019.0	45.90	
238.0	004.1000	0042.5	017.1	107.5	000.4200	-0135.9	019.1	45.82	
239.0	004.1000	0042.9	017.2	107.1	000.4200	-0138.0	018.8	46.05	
240.0	004.1000	0045.0	017.6	107.5	000.4200	-0135.5	018.3	46.50	
241.0	004.1000	0047.6	018.2	108.2	000.4200	-0131.6	017.6	47.01	
242.0	004.1000	0048.8	018.5	108.1	000.4200	-0132.4	017.2	47.35	
243.0	004.1000	0047.7	018.2	106.8	000.4200	-0139.5	017.2	47.40	
244.0	004.1000	0044.8	017.6	104.6	000.4200	-0151.6	017.4	47.19	
245.0	004.1000	0042.9	017.2	102.9	000.4200	-0159.3	017.6	47.06	
246.0	004.1000	0043.3	017.3	102.3	000.4200	-0160.0	017.3	47.29	
247.0	004.1000	0045.3	017.7	102.4	000.4200	-0160.0	016.8	47.73	
248.0	004.1000	0047.4	018.2	102.4	000.4200	-0160.0	016.2	48.22	
249.0	004.1000	0049.2	018.6	102.2	000.4200	-0160.0	015.7	48.64	
250.0	004.1000	0050.1	018.7	101.6	000.4200	-0159.5	015.4	48.93	
251.0	004.1000	0049.2	018.5	100.2	000.4200	-0158.5	015.4	48.93	
252.0	004.1000	0046.5	018.0	098.1	000.4200	-0162.9	015.7	48.61	
253.0	004.1000	0042.3	017.0	095.8	000.4200	-0169.7	016.5	48.00	
254.0	004.1000	0038.2	016.0	093.6	000.4200	-0171.4	017.3	47.31	
255.0	004.1000	0034.2	015.1	091.9	000.4200	-0171.6	018.0	46.67	
256.0	004.1000	0031.3	014.5	090.5	000.4200	-0172.2	018.6	46.24	
257.0	004.1000	0029.0	014.3	089.6	000.4200	-0172.5	018.8	46.08	
258.0	004.1000	0027.9	014.3	088.9	000.4200	-0172.7	018.7	46.13	
259.0	004.1000	0027.6	014.3	088.1	000.4200	-0174.1	018.7	46.16	
260.0	004.1000	0027.1	014.3	087.3	000.4200	-0175.8	018.6	46.19	
261.0	004.1000	0027.8	014.3	086.6	000.4200	-0177.3	018.6	46.22	

BROWN BROADCAST SERVICES
INCORPORATED

Michael D. Brown

3740 S.W. Comus St.

Portland, Oregon 97219-7418

503-245-6065

Azimuth (degrees)	ERP (kW)	HAAT (m)	Dist (km)	Azimuth (degrees)	ERP (kW)	HAAT (m)	Dist (km)	Actual (dBu)	IX (km)
262.0	004.1000	0029.4	014.3	085.8	000.4200	-0178.7	018.6	46.23	
263.0	004.1000	0032.6	014.8	085.1	000.4200	-0179.9	018.0	46.68	
264.0	004.1000	0034.8	015.3	084.3	000.4200	-0179.9	017.5	47.09	
265.0	004.1000	0035.6	015.5	083.4	000.4200	-0179.5	017.4	47.23	
266.0	004.1000	0035.0	015.3	082.5	000.4200	-0179.3	017.5	47.10	
267.0	004.1000	0032.2	014.7	081.8	000.4200	-0178.8	018.1	46.60	
268.0	004.1000	0029.1	014.3	081.2	000.4200	-0178.3	018.6	46.21	
269.0	004.1000	0026.8	014.3	080.4	000.4200	-0176.7	018.6	46.18	
270.0	004.1000	0025.2	014.3	079.7	000.4200	-0174.1	018.7	46.15	
271.0	004.1000	0023.7	014.3	078.9	000.4200	-0171.7	018.7	46.11	
272.0	004.1000	0022.2	014.3	078.2	000.4200	-0169.0	018.8	46.06	
273.0	004.1000	0021.0	014.3	077.4	000.4200	-0165.9	018.8	46.01	
274.0	004.1000	0020.1	014.3	076.7	000.4200	-0162.6	018.9	45.96	
275.0	004.1000	0019.7	014.3	076.0	000.4200	-0159.6	019.0	45.89	
276.0	004.1000	0019.4	014.3	075.3	000.4200	-0157.2	019.1	45.83	
277.0	004.1000	0019.2	014.3	074.6	000.4200	-0155.1	019.2	45.75	
278.0	004.1000	0019.3	014.3	073.9	000.4200	-0153.2	019.3	45.68	
279.0	004.1000	0020.0	014.3	073.2	000.4200	-0151.5	019.4	45.59	
280.0	004.1000	0021.0	014.3	072.6	000.4200	-0150.1	019.5	45.50	
281.0	004.1000	0022.3	014.3	071.9	000.4200	-0149.2	019.6	45.41	
282.0	004.1000	0024.2	014.3	071.3	000.4200	-0148.5	019.7	45.31	
283.0	004.1000	0026.5	014.3	070.7	000.4200	-0147.8	019.8	45.21	
284.0	004.1000	0028.2	014.3	070.1	000.4200	-0147.0	020.0	45.10	
285.0	004.1000	0029.2	014.3	069.5	000.4200	-0146.4	020.1	44.99	
286.0	004.1000	0029.0	014.3	068.9	000.4200	-0146.2	020.3	44.87	
287.0	004.1000	0027.6	014.3	068.3	000.4200	-0146.3	020.4	44.75	
288.0	004.1000	0026.3	014.3	067.8	000.4200	-0146.3	020.6	44.63	
289.0	004.1000	0025.2	014.3	067.3	000.4200	-0145.9	020.7	44.50	
290.0	004.1000	0024.6	014.3	066.8	000.4200	-0145.4	020.9	44.37	
291.0	004.1000	0025.0	014.3	066.3	000.4200	-0145.1	021.1	44.24	
292.0	004.1000	0025.8	014.3	065.8	000.4200	-0144.6	021.3	44.10	
293.0	004.1000	0026.6	014.3	065.3	000.4200	-0144.2	021.4	43.96	
294.0	004.1000	0027.5	014.3	064.9	000.4200	-0143.8	021.6	43.82	
295.0	004.1000	0028.7	014.3	064.5	000.4200	-0143.4	021.8	43.68	
296.0	004.1000	0030.1	014.3	064.0	000.4200	-0143.2	022.0	43.54	
297.0	004.1000	0031.6	014.6	063.0	000.4200	-0142.4	022.0	43.53	
298.0	004.1000	0033.1	014.9	061.9	000.4200	-0140.6	022.0	43.51	
299.0	004.1000	0034.3	015.2	061.0	000.4200	-0137.6	022.1	43.46	
300.0	004.1000	0035.3	015.4	060.1	000.4200	-0133.9	022.2	43.37	
301.0	004.1000	0036.4	015.6	059.3	000.4200	-0129.0	022.3	43.28	
302.0	004.1000	0037.5	015.9	058.4	000.4200	-0122.8	022.5	43.19	
303.0	004.1000	0038.9	016.2	057.3	000.4200	-0114.1	022.6	43.11	
304.0	004.1000	0040.7	016.7	056.0	000.4200	-0103.1	022.7	43.04	
305.0	004.1000	0043.0	017.2	054.4	000.4200	-0092.9	022.8	42.98	
306.0	004.1000	0045.9	017.8	052.6	000.4200	-0087.8	022.8	42.91	
307.0	004.1000	0049.2	018.5	050.7	000.4200	-0091.1	023.0	42.83	
308.0	004.1000	0052.8	019.3	048.8	000.4200	-0102.6	023.1	42.71	

BROWN BROADCAST SERVICES
INCORPORATED

Michael D. Brown

3740 S.W. Comus St.

Portland, Oregon 97219-7418

503-245-6065

EXHIBIT 23

INTERNATIONAL BORDERS

This proposal is within the 320km Canadian border zone. There are no affected foreign stations within range.

BROWN BROADCAST SERVICES
INCORPORATED

Michael D. Brown

3740 S.W. Comus St.

Portland, Oregon 97219-7418

503-245-6065

EXHIBIT 24

ENVIRONMENTAL PROTECTION ACT / NIER ANALYSIS

The applicant proposes mounting a new antenna on an existing 14 meter pole. The proposed center of radiation is 9.4m AGL. A single element Bext TFC2K circularly-polarized antenna is proposed. Calculations were made using FM Model for Windows, version 2.10, using the “Jampro “Double V”” setting, which is the functional equivalent of the Bext TFC2K. FM Model predicted a peak exposure of $141 \mu\text{w}/\text{cm}^2$, at 7.6 meters from the tower.

Translator W273BI is also located in the vicinity. Their antenna does not match any standard setting in FM Model for Windows, so the “worst-case” Ring Stub/Dipole setting was employed. With licensed parameters of 50 watts-vertical at 12 meters, the predicted peak RF exposure is $15.9 \mu\text{w}/\text{cm}^2$, at 2.2 meters from the tower. There are no other sources of RF exposure in the vicinity.

Although the points of peak exposure from these two facilities do not correspond, they are added herein for simplicity. On that basis, the total peak exposure is predicted to be $156.9 \mu\text{w}/\text{cm}^2$, or 78.5% of the Maximum Permissible Exposure (MPE) of $200 \mu\text{w}/\text{cm}^2$ for uncontrolled environments.

The applicant will ensure that public access to the tower is restricted by fencing, anti-climb devices, or other appropriate measures. The site will be posted with appropriate RF exposure warning signs. If tower climbing by authorized personnel becomes necessary, transmitter power will be reduced or operation will cease, as necessary, so as to not exceed the RF exposure limits.

BROWN BROADCAST SERVICES
INCORPORATED

Michael D. Brown 3740 S.W. Comus St. Portland, Oregon 97219-7418 503-245-6065