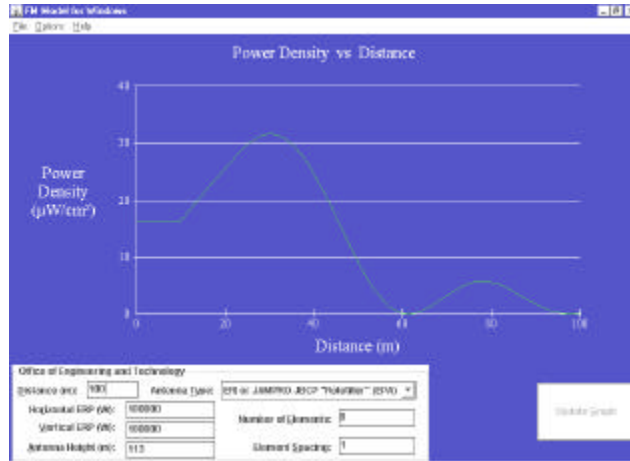


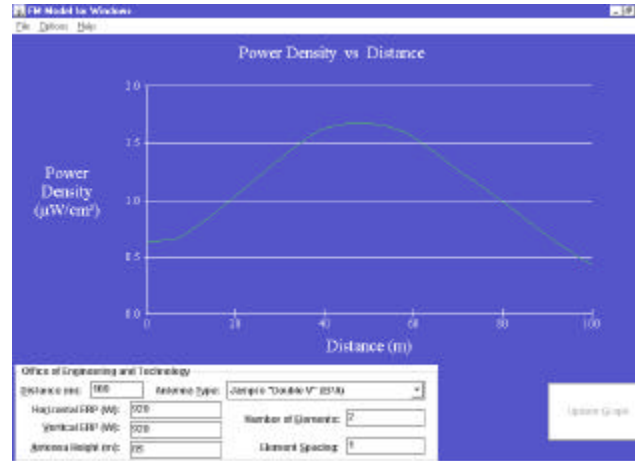
## Human Exposure to Radiofrequency Radiation



### Study 1

WOKK

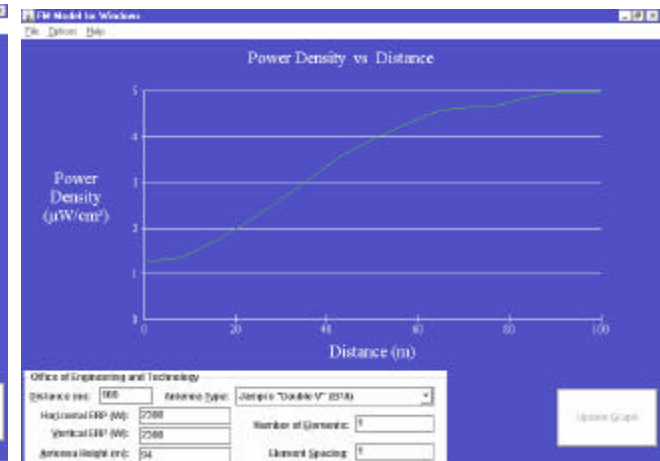
ERP – 100KW  
Ht. AGL – 113m  
Power Density –  $17\mu\text{W}/\text{cm}^2$   
Antenna – ERI Rototiller, 8 bay



### Study 2

WMMZ

ERP – 0.920KW  
Ht. AGL – 85m  
Power Density –  $0.65\mu\text{W}/\text{cm}^2$   
Antenna – ERI Rototiller, 2 bay



### Study 3

WVLV

ERP – 2.3KW  
Ht. AGL – 94m  
Power Density –  $1.25\mu\text{W}/\text{cm}^2$   
Antenna – Jampro Double V, 1 bay

Detail studies were conducted by using the OST FM Model for Windows for all facilities on the existing tower. Listed above are the graphs with results of each study. The combined power density for all facilities is  $17.85\mu\text{W}/\text{cm}^2$ , well below the required  $0.2\text{mW}/\text{cm}^2$  for occupational and  $1.0\text{mW}/\text{cm}^2$  for general public.