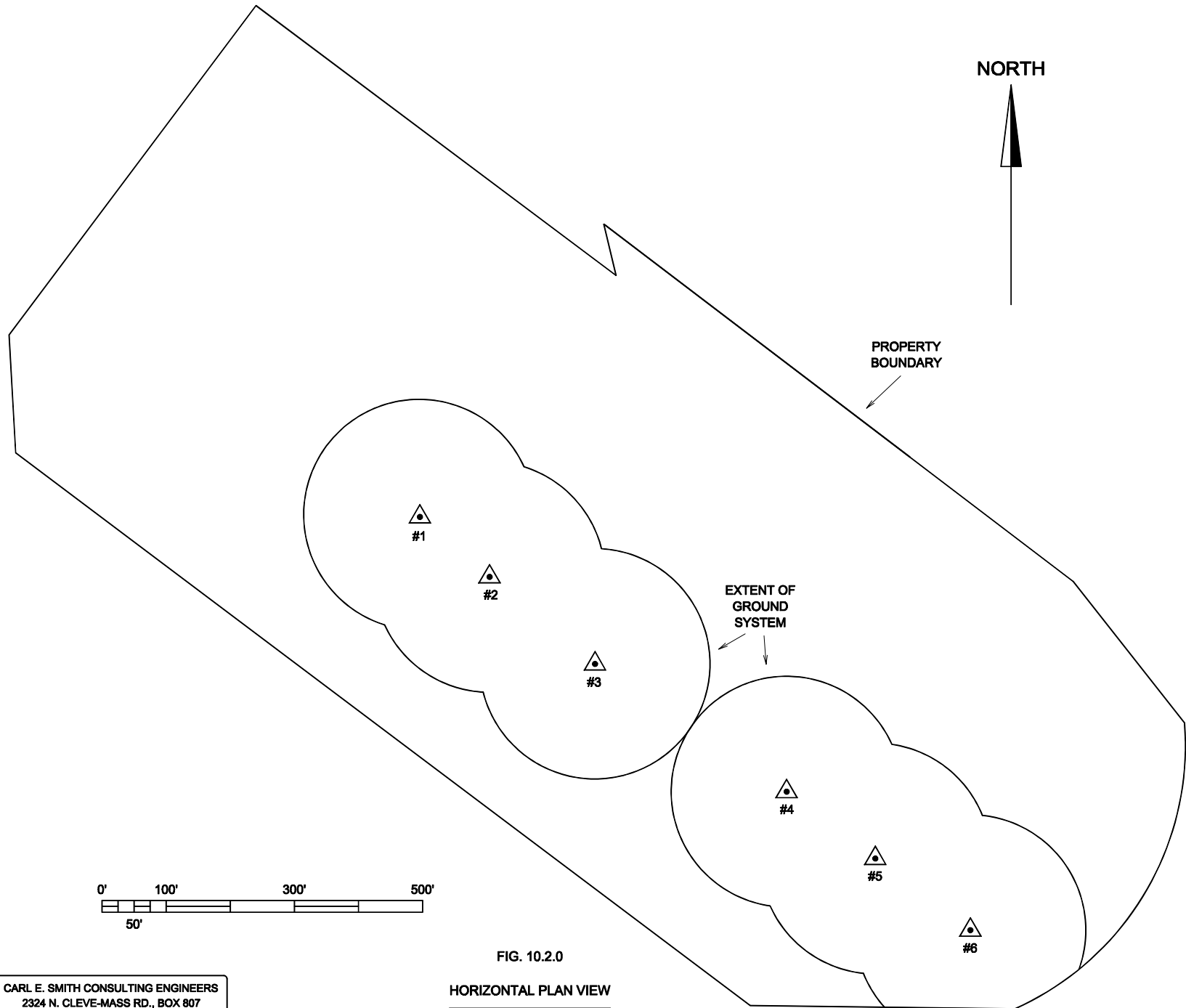


EXHIBIT 10.2
(Page 1 of 3)

NIGHTTIME TRANSMITTER
SITE INFORMATION
M-10 Broadcasting, Inc.
Pikesville, MD

The modified 1370 kHz nighttime facilities specified in the attached amendment will operate from the nighttime transmitter site authorized for WWLG by construction permit BMJP-20001023ACJ at a power level of 7.8 kilowatts using a modified six tower directional antenna system. This site is located at 750 Music Fair Road, in Owings Mills, Baltimore County, Maryland. The geographic coordinates specified for this nighttime antenna system in the attached amendment differ just slightly from those presently specified for this nighttime antenna system in the above referenced construction permit. This is the result of this antenna system being shifted to a slightly different location on the same parcel of land. Figure 10.2.0 is a horizontal plan view showing the placement of these nighttime towers on this site. Figure 10.2.1 is a topographic map showing the location of this site. No photographs of this transmitter site are included as a part of the attached application since photographs of this site are presently on file with the FCC.



CARL E. SMITH CONSULTING ENGINEERS
2324 N. CLEVE-MASS RD., BOX 807
BATH, OHIO 44210-0807
(330) 659-4440

FIG. 10.2.0

HORIZONTAL PLAN VIEW
M-10 BROADCASTING, INC.
PIKESVILLE, MD

