

ADDENDUM 3 TO EXHIBIT 15

PARTIES TO THE APPLICATION

In Exhibit 15, the Applicants set forth information regarding the post-consummation ownership structure of the joint venture. By this Addendum, the Applicants submit updated information.

The following sections of Exhibit 15 are replaced with the versions attached hereto:

- Parties to the Application (Introduction);
- Part II – Ownership Information in Joint Venture Entity; and
- Part IV – Chart Showing Ownership Structure After Consummation of Proposed Transaction.

In Part III, the following persons are removed from the table for NBC Universal Media, LLC (f/k/a NBC Universal, Inc. and which was referred to as NBC Universal, LLC in the original tables and charts in Exhibit 15) after the closing of the joint venture transaction: Keith Sherin, Jeffrey Zucker, Jeffrey Immelt and Margaret Lazo.

In Part III, the following person is added to the table for NBC Universal Media, LLC (f/k/a NBC Universal, Inc.) after the closing of the joint venture transaction:

Name/Address	Citizenship	Positional Interest	% of Votes	% of Total Assets
Stephen B. Burke c/o Comcast Corporation One Comcast Center Philadelphia, PA 19103-2838	U.S.	Chief Executive Officer	0	0

In Part III, the positional interests of the following persons listed in the table for NBC Universal Media, LLC (f/k/a NBC Universal, Inc.) upon conversion to a limited liability company are updated:¹

Name/Address	Citizenship	Positional Interest	% of Votes	% of Total Assets
Lynn Calpeter NBC Universal 30 Rockefeller Plaza New York, NY 10112	U.S.	Executive Vice President, Chief Financial Officer and Treasurer	0	0
John Eck NBC Universal 30 Rockefeller Plaza New York, NY 10112	U.S.	Executive Vice President	0	0
Salil Mehta NBC Universal 30 Rockefeller Plaza New York, NY 10112	U.S.	Executive Vice President	0	0
Richard Cotton NBC Universal 30 Rockefeller Plaza New York, NY 10112	U.S.	Executive Vice President, General Counsel and Secretary	0	0
Marc Chini NBC Universal 30 Rockefeller Plaza New York, NY 10112	U.S.	Executive Vice President	0	0

¹ As previously reported and as described herein, in connection with the closing of the joint venture transaction, NBC Universal, Inc. will convert from a Delaware corporation into a Delaware limited liability company of which Newco will be the sole member. (NBC Universal, Inc., to be named NBC Universal Media, LLC in connection with the conversion.) Following the closing of the joint venture transaction, it is expected that NBCU will no longer have a board of directors. NBCU is expected to be managed by Newco as NBCU's sole member, and the board of directors of Newco effectively will be NBCU's governing body.

Name/Address	Citizenship	Positional Interest	% of Votes	% of Total Assets
Christy Rupert Shibata NBC Universal 30 Rockefeller Plaza New York, NY 10112	U.S.	Vice President and Assistant Treasurer	0	0
Allison Golust NBC Universal 30 Rockefeller Plaza New York, NY 10112	U.S.	Executive Vice President	0	0
Paula Madison NBC Universal 100 Universal City Plaza Universal City, CA 91608	U.S.	Executive Vice President and Chief Diversity Officer	0	0

The attached Introduction to Exhibit 15 reflects that GE purchased 7.7 percent of the common stock of NBCU from Vivendi S.A. on September 26, 2010. Vivendi's equity interest in NBCU has now been reduced to 12.3 percent. Vivendi will own no interest in NBCU or Newco following consummation of the joint venture transaction.

The attached Introduction to Exhibit 15 also reflects that the NBCU Financing has been completed. This was accomplished through bond offerings.

The attached Introduction to Exhibit 15 describes in general terms how Comcast will acquire its 51% interest in Newco and how GE through its indirect subsidiary, Navy Holdings, Inc., will retain a 49% interest. Additional information regarding GE's 49% interest in Newco is provided herein. The equity interests of certain NBCU subsidiaries (which do not include entities in the ownership chain of the broadcast licenses) will be contributed to newly formed holding companies. The equity interests in these holding companies will be distributed up the ownership chain to Navy Holdings. Navy Holdings will contribute its interest in NBCU to Newco and the new holding companies will contribute the equity interests they hold to Newco in exchange for equity interests in Newco. Newco will then contribute the equity interests in companies other than NBCU down the chain to VUE Newco LLC (except that the equity interests held by one of the holding companies will be contributed to NBCU). The new holding companies will sell their equity interests in Newco to a Comcast entity and Navy Holdings will sell a portion of its equity interest in Newco to a Comcast entity and will be left with GE's entire 49% interest in Newco upon completion of the consummation of the transaction. The ownership structure of GE's ownership of a 49% interest in Newco and of the broadcast and microwave

licensees post-closing has not changed from the structure described in the original applications as previously amended.

Part I of Exhibit 15 is clarified herein with respect to the conversion of certain corporations to limited liability companies. Generally, all of the corporations below NBCU (and including NBCU) in the ownership structure for the broadcast licensees are to be converted to LLCs. However, the states of incorporation for two of the corporations do not have a procedure for the conversion of corporations to LLCs. Accordingly, new LLCs will be formed and the corporations will be merged into the new LLCs. Specifically, WNJU-TV Broadcasting Corp. will be merged into newly formed WNJU-TV Broadcasting LLC and Video 44 Acquisition Corp., Inc. will be merged into Video 44 Acquisition LLC. The officers, directors and equity holders of these entities as shown in the tables in Part III of Exhibit 15 have not changed.

The Applicants hereby also conform all other relevant references in the Application, including the Public Interest Statement, to comport with this Addendum.²

² Please note that, to the extent necessary, the Applicants intend this conforming amendment to also apply to the Applicants' international and wireless applications on FCC Forms 312 and 603. *See, e.g.*, FCC Form 312 Lead Application File No. SES-ASG-20100201-00148; and FCC Form 603 Lead Application File No. 0004101576.

EXHIBIT 15

PARTIES TO APPLICATION

This application seeks FCC approval for the transfer of control of NBC Telemundo License Co., which will result from the creation by Comcast Corporation (“Comcast”) and General Electric Company (“GE”) of a new content-focused joint venture. As set forth in the Master Agreement by and among Comcast, GE, NBC Universal, Inc. (“NBCU”), and Navy, LLC (“Newco,” to be named NBC Universal, LLC) dated December 3, 2009, as amended (the “Master Agreement”), creation of the joint venture will occur in several steps. At the time of the closing, and immediately prior to the contribution of businesses and assets to Newco by Comcast and GE, both Comcast and GE will effect an internal restructuring of certain of the businesses and entities to be contributed to Newco. Certain of the steps in both of these internal restructurings will result in *pro forma* changes in control of FCC licensees. The *pro forma* changes in control relating to the Comcast restructuring do not involve the broadcast licensees and are not included herein. The *pro forma* changes in control relating to the NBCU restructuring involving the broadcast licensees are described in Part I below.

GE, through its wholly owned subsidiary, National Broadcasting Company Holding, Inc. (“NBC Holding”), will acquire the 12.3 percent of NBCU that it does not currently own in a transaction that does not require Commission approval.¹ Then, NBCU, which has borrowed \$9.1 billion from third-party lenders (the “NBCU Financing”), will distribute to GE the proceeds from the NBCU Financing, less amounts previously used by NBCU to repay certain indebtedness (the “NBCU Dividend”).² The contribution to Newco of NBCU as well as certain other assets used primarily in NBCU’s business will occur through a series of *pro forma* transfers of control as follows:

NBC Holding has created a new wholly owned subsidiary, Navy Holdings, Inc. (“Navy Holdings”), which in turn has created a new wholly owned subsidiary, Newco. NBC Holding will contribute its 100 percent interest in NBCU to Navy Holdings, and NBCU will convert from a corporation to an LLC. Then Navy Holdings will contribute its 100 percent interest in NBCU to Newco, and certain subsidiaries of Navy Holdings will contribute assets to Newco. Each of these steps is a *pro forma* change in control of the licensees indirectly owned by NBCU because GE will be the 100 percent indirect owner of the licensees both before and after each step.

Comcast then will contribute its content business comprising regional sports networks, other programming networks, and certain Internet businesses, as well as certain other assets used primarily in

¹ As of the date of this submission, Vivendi S.A. is the owner of 12.3 percent of the interest of NBCU. GE purchased 7.7 percent of the common stock of NBCU from Vivendi S.A. on September 26, 2010.

² Beginning shortly after closing, Newco is expected to maintain maximum leverage of 2.75x EBITDA (Earnings Before Interest, Taxes, Depreciation, and Amortization) and hold an investment grade credit rating. If any borrowings by Newco to fund GE’s redemptions would result in Newco’s leverage ratio exceeding 2.75x EBITDA or the venture losing investment-grade status, Comcast will provide a backstop of up to \$2.875 billion for each redemption, subject to a maximum amount of \$5.75 billion.

those businesses, to Newco³ and will make a payment of cash to Navy Holdings and certain of its subsidiaries and, as a result, will acquire 51 percent and control of Newco. The specific steps in this exchange will occur contemporaneously and are as follows:

An indirect subsidiary of Comcast, Comcast Navy Contribution, LLC, will contribute to Newco the ownership interests in the Comcast contributed entities, and in exchange Comcast Navy Contribution, LLC will receive, in the aggregate, 25.75 percent of the ownership of Newco. Navy Holdings and certain of its subsidiaries will transfer to Comcast Navy Acquisition, LLC (a new direct subsidiary of Comcast) a 25.25 percent ownership interest in Newco, and Comcast will pay to Navy Holdings and certain of its subsidiaries cash in the amount of approximately \$6.5 billion (the amount will be \$7.1 billion minus 51 percent of the free cash flow of NBCU between signing and closing).⁴

Information regarding the officers, directors, and equity holders of each entity in the ownership structure of the joint venture relating to the broadcast licensees is set forth in the tables on the following pages in this exhibit, which reflect the post-consummation ownership structure of the joint venture. Part II provides information regarding Newco and the entities holding direct and indirect attributable interests in Newco. Part III provides information regarding the various broadcast licensee entities and the entities holding direct and indirect attributable interests in such licensee entities up to Newco. Part IV contains a chart showing the ownership structure after consummation of the proposed transaction.

³ The Comcast content businesses will be contributed to NBC Universal Media, LLC as a wholly owned subsidiary of Newco, and not to Newco directly. To distinguish between pre- and post-transaction NBCU, these contributions are described herein as being made to Newco to make clear that the contributions will be made to the new joint venture and not to NBCU under its present ownership.

⁴ The amount of both the NBCU Dividend and the cash payment by Comcast to GE are subject to adjustment in certain circumstances.

Part II – Ownership Information in Joint Venture Entity

A. Ownership Information for NBC Universal, LLC (f/k/a Navy, LLC (Newco))

Name/Address	Citizenship	Positional Interest	% of Votes	% of Total Assets
NBC Universal, LLC c/o Comcast Corporation One Comcast Center Philadelphia, PA 19103-2838	Delaware Limited Liability Company	N/A	N/A	N/A
Stephen B. Burke c/o Comcast Corporation One Comcast Center Philadelphia, PA 19103-2838	United States	Chief Executive Officer, President, and Director	0	0
Brian L. Roberts c/o Comcast Corporation One Comcast Center Philadelphia, PA 19103-2838	United States	Director	0	0
Michael J. Angelakis c/o Comcast Corporation One Comcast Center Philadelphia, PA 19103-2838	United States	Director	0	0
Jeffrey R. Immelt c/o General Electric Company 3135 Easton Turnpike Fairfield, CT 06828	United States	Director	0	0
Keith S. Sherin c/o General Electric Company 3135 Easton Turnpike Fairfield, CT 06828	United States	Director	0	0
Comcast Navy Acquisition, LLC c/o Comcast Corporation One Comcast Center Philadelphia, PA 19103-2838	To be organized in a U.S. jurisdiction	Member	25.25%	19.09%

Name/Address	Citizenship	Positional Interest	% of Votes	% of Total Assets
Comcast Navy Contribution, LLC c/o Comcast Corporation One Comcast Center Philadelphia, PA 19103-2838	To be organized in a U.S. jurisdiction	Member	25.75%	19.47%
Comcast Corporation One Comcast Center Philadelphia, PA 19103-2838	Pennsylvania Corporation	Member	51% (In the aggregate)	38.56% (In the aggregate)
Navy Holdings, Inc. 1299 Pennsylvania Avenue, NW Washington, DC 20004	Delaware Corporation	Member	49%	37.04%

B. Ownership Information for Comcast Entities

Ownership Information for Comcast Navy Contribution, LLC

Name/Address	Citizenship	Positional Interest	% of Votes	% of Total Assets
Comcast Navy Contribution, LLC c/o Comcast Corporation One Comcast Center Philadelphia, PA 19103-2838	Delaware Limited Liability Company	N/A	N/A	N/A
Comcast Programming Development, Inc. c/o Comcast Corporation One Comcast Center Philadelphia, PA 19103-2838	Delaware Corporation	Member	100% in the aggregate. The final percentage interests are subject to change, pending a final valuation report on the relative values of what was contributed.	100% in the aggregate. The final percentage interests are subject to change, pending a final valuation report on the relative values of what was contributed.
G4 Holding Company c/o Comcast Corporation One Comcast Center Philadelphia, PA 19103-2838	Delaware Corporation	Member		
Versus Holdings, LLC c/o Comcast Corporation One Comcast Center Philadelphia, PA 19103-2838	Delaware Limited Liability Company	Member		
Golfnow Holdings, Inc. c/o Comcast Corporation One Comcast Center Philadelphia, PA 19103-2838	Delaware Corporation	Member		
TGC Holdings, Inc. c/o Comcast Corporation One Comcast Center Philadelphia, PA 19103-2838	Delaware Corporation	Member		
E! Holdings, Inc. c/o Comcast Corporation One Comcast Center Philadelphia, PA 19103-2838	Delaware Corporation	Member		

Name/Address	Citizenship	Positional Interest	% of Votes	% of Total Assets
Comcast SportsNet New England Holdings, LLC c/o Comcast Corporation One Comcast Center Philadelphia, PA 19103-2838	Delaware Limited Liability Company	Member		
Comcast SportsNet Philadelphia Holdings, LLC c/o Comcast Corporation One Comcast Center Philadelphia, PA 19103-2838	Delaware Limited Liability Company	Member		
CSN Bay Area Holdings, Inc. c/o Comcast Corporation One Comcast Center Philadelphia, PA 19103-2838	Delaware Corporation	Member		
CHC, LLC c/o Comcast Corporation One Comcast Center Philadelphia, PA 19103-2838	Delaware Limited Liability Company	Member		
Comcast Contribution Holdings, LLC c/o Comcast Corporation One Comcast Center Philadelphia, PA 19103-2838	Delaware Limited Liability Company	Member		

Ownership Information for Comcast Programming Development, Inc.

Name/Address	Citizenship	Positional Interest	% of Votes	% of Total Assets
Comcast Programming Development, Inc. c/o Comcast Corporation One Comcast Center Philadelphia, PA 19103-2838	Delaware Corporation	N/A	N/A	N/A
Stephen B. Burke c/o Comcast Corporation One Comcast Center Philadelphia, PA 19103-2838	United States	Vice Chairman	0	0
Michael J. Angelakis c/o Comcast Corporation One Comcast Center Philadelphia, PA 19103-2838	United States	Chief Financial Officer, Executive Vice President	0	0
David L. Cohen c/o Comcast Corporation One Comcast Center Philadelphia, PA 19103-2838	United States	Executive Vice President, Assistant Secretary	0	0
Arthur R. Block c/o Comcast Corporation One Comcast Center Philadelphia, PA 19103-2838	United States	Senior Vice President, Assistant Treasurer, Secretary, Director	0	0
Lawrence J. Salva c/o Comcast Corporation One Comcast Center Philadelphia, PA 19103-2838	United States	Senior Vice President, Chief Accounting Officer, Controller	0	0

Name/Address	Citizenship	Positional Interest	% of Votes	% of Total Assets
William E. Dordelman c/o Comcast Corporation One Comcast Center Philadelphia, PA 19103-2838	United States	Senior Vice President, Treasurer	0	0
Robert S. Pick c/o Comcast Corporation One Comcast Center Philadelphia, PA 19103-2838	United States	Senior Vice President - Corporate Development	0	0
Kristine A. Dankenbrink c/o Comcast Corporation One Comcast Center Philadelphia, PA 19103-2838	United States	Senior Vice President - Taxation	0	0
Joseph F. DiTrollo c/o Comcast Corporation One Comcast Center Philadelphia, PA 19103-2838	United States	Vice President - Financial Operations	0	0
Brian L. Roberts c/o Comcast Corporation One Comcast Center Philadelphia, PA 19103-2838	United States	Chairman	0	0
Comcast Holdings Corporation c/o Comcast Corporation One Comcast Center Philadelphia, PA 19103-2838	Pennsylvania Corporation	Sole Shareholder	100%	100%

Ownership Information for G4 Holding Company

Name/Address	Citizenship	Positional Interest	% of Votes	% of Total Assets
G4 Holding Company c/o Comcast Corporation One Comcast Center Philadelphia, PA 19103-2838	Delaware Corporation	N/A	N/A	N/A
David L. Cohen c/o Comcast Corporation One Comcast Center Philadelphia, PA 19103-2838	United States	Executive Vice President	0	0
Michael J. Angelakis c/o Comcast Corporation One Comcast Center Philadelphia, PA 19103-2838	United States	Executive Vice President	0	0
Stephen B. Burke c/o Comcast Corporation One Comcast Center Philadelphia, PA 19103-2838	United States	Executive Vice President	0	0
Arthur R. Block c/o Comcast Corporation One Comcast Center Philadelphia, PA 19103-2838	United States	Senior Vice President, Assistant Treasurer, Secretary, Director	0	0
Lawrence J. Salva c/o Comcast Corporation One Comcast Center Philadelphia, PA 19103-2838	United States	Senior Vice President, Chief Accounting Officer, Controller	0	0
Robert S. Pick c/o Comcast Corporation One Comcast Center Philadelphia, PA 19103-2838	United States	Senior Vice President - Corporation Development	0	0

Name/Address	Citizenship	Positional Interest	% of Votes	% of Total Assets
Kristine A. Dankenbrink c/o Comcast Corporation One Comcast Center Philadelphia, PA 19103-2838	United States	Senior Vice President - Taxation	0	0
Joseph F. DiTrollo c/o Comcast Corporation One Comcast Center Philadelphia, PA 19103-2838	United States	Vice President - Financial Operations	0	0
William E. Dordelman c/o Comcast Corporation One Comcast Center Philadelphia, PA 19103-2838	United States	Assistant Treasurer	0	0
Brian L. Roberts c/o Comcast Corporation One Comcast Center Philadelphia, PA 19103-2838	United States	Chairman	0	0
Comcast Holdings Corporation c/o Comcast Corporation One Comcast Center Philadelphia, PA 19103-2838	Pennsylvania Corporation	Sole Shareholder	100%	100%

Ownership Information for Versus Holdings, LLC

Name/Address	Citizenship	Positional Interest	% of Votes	% of Total Assets
Versus Holdings, LLC c/o Comcast Corporation One Comcast Center Philadelphia, PA 19103-2838	Delaware Limited Liability Company	N/A	N/A	N/A
Stephen B. Burke c/o Comcast Corporation One Comcast Center Philadelphia, PA 19103-2838	United States	Chief Operating Officer, Executive Vice President	0	0
Michael J. Angelakis c/o Comcast Corporation One Comcast Center Philadelphia, PA 19103-2838	United States	Chief Financial Officer, Executive Vice President	0	0
David L. Cohen c/o Comcast Corporation One Comcast Center Philadelphia, PA 19103-2838	United States	Executive Vice President, Assistant Secretary	0	0
Arthur R. Block c/o Comcast Corporation One Comcast Center Philadelphia, PA 19103-2838	United States	Senior Vice President, Assistant Treasurer, Secretary	0	0
Lawrence J. Salva c/o Comcast Corporation One Comcast Center Philadelphia, PA 19103-2838	United States	Senior Vice President, Chief Accounting Officer, and Controller	0	0

Name/Address	Citizenship	Positional Interest	% of Votes	% of Total Assets
William E. Dordelman c/o Comcast Corporation One Comcast Center Philadelphia, PA 19103-2838	United States	Senior Vice President, Treasurer	0	0
Robert S. Pick c/o Comcast Corporation One Comcast Center Philadelphia, PA 19103-2838	United States	Senior Vice President - Corporate Development	0	0
Kristine A. Dankenbrink c/o Comcast Corporation One Comcast Center Philadelphia, PA 19103-2838	United States	Senior Vice President - Taxation	0	0
Joseph F. DiTrollo c/o Comcast Corporation One Comcast Center Philadelphia, PA 19103-2838	United States	Vice President - Financial Operations	0	0
Brian L. Roberts c/o Comcast Corporation One Comcast Center Philadelphia, PA 19103-2838	United States	Chairman	0	0
Comcast Programming Ventures II, Inc. c/o Comcast Corporation One Comcast Center Philadelphia, PA 19103-2838	Delaware Corporation	Member	17%	17%
Comcast Holdings Corporation c/o Comcast Corporation One Comcast Center Philadelphia, PA 19103-2838	Pennsylvania Corporation	Member	83%	83%

Ownership Information for Comcast Programming Ventures II, Inc.

Name/Address	Citizenship	Positional Interest	% of Votes	% of Total Assets
Comcast Programming Ventures II, Inc. c/o Comcast Corporation One Comcast Center Philadelphia, PA 19103-2838	Delaware Corporation	N/A	N/A	N/A
Michael J. Angelakis c/o Comcast Corporation One Comcast Center Philadelphia, PA 19103-2838	United States	Chief Financial Officer, Executive Vice President	0	0
David L. Cohen c/o Comcast Corporation One Comcast Center Philadelphia, PA 19103-2838	United States	Executive Vice President, Assistant Secretary	0	0
Arthur R. Block c/o Comcast Corporation One Comcast Center Philadelphia, PA 19103-2838	United States	Senior Vice President, Assistant Treasurer, Secretary, Director	0	0
Lawrence J. Salva c/o Comcast Corporation One Comcast Center Philadelphia, PA 19103-2838	United States	Senior Vice President, Chief Accounting Officer, Controller	0	0
William E. Dordelman c/o Comcast Corporation One Comcast Center Philadelphia, PA 19103-2838	United States	Senior Vice President, Treasurer	0	0

Name/Address	Citizenship	Positional Interest	% of Votes	% of Total Assets
Robert S. Pick c/o Comcast Corporation One Comcast Center Philadelphia, PA 19103-2838	United States	Senior Vice President - Corporate Development	0	0
Kristine A. Dankenbrink c/o Comcast Corporation One Comcast Center Philadelphia, PA 19103-2838	United States	Senior Vice President - Taxation	0	0
Joseph F. DiTrollo c/o Comcast Corporation One Comcast Center Philadelphia, PA 19103-2838	United States	Vice President - Financial Operations	0	0
Brian L. Roberts c/o Comcast Corporation One Comcast Center Philadelphia, PA 19103-2838	United States	Chairman	0	0
Stephen B. Burke c/o Comcast Corporation One Comcast Center Philadelphia, PA 19103-2838	United States	Vice Chairman	0	0
Comcast Holdings Corporation c/o Comcast Corporation One Comcast Center Philadelphia, PA 19103-2838	Pennsylvania Corporation	Sole Shareholder	100%	100%

Ownership Information for Golfnow Holdings, Inc.

Name/Address	Citizenship	Positional Interest	% of Votes	% of Total Assets
Golfnow Holdings, Inc. c/o Comcast Corporation One Comcast Center Philadelphia, PA 19103-2838	Delaware Corporation	N/A	N/A	N/A
Stephen B. Burke c/o Comcast Corporation One Comcast Center Philadelphia, PA 19103-2838	United States	Chief Operating Officer, Executive Vice President	0	0
Michael J. Angelakis c/o Comcast Corporation One Comcast Center Philadelphia, PA 19103-2838	United States	Chief Financial Officer, Executive Vice President	0	0
David L. Cohen c/o Comcast Corporation One Comcast Center Philadelphia, PA 19103-2838	United States	Executive Vice President, Assistant Secretary	0	0
Arthur R. Block c/o Comcast Corporation One Comcast Center Philadelphia, PA 19103-2838	United States	Senior Vice President, Assistant Treasurer, Secretary, Director	0	0
Lawrence J. Salva c/o Comcast Corporation One Comcast Center Philadelphia, PA 19103-2838	United States	Senior Vice President, Chief Accounting Officer, Controller	0	0
William E. Dordelman c/o Comcast Corporation One Comcast Center Philadelphia, PA 19103-2838	United States	Senior Vice President, Treasurer	0	0

Name/Address	Citizenship	Positional Interest	% of Votes	% of Total Assets
Robert S. Pick c/o Comcast Corporation One Comcast Center Philadelphia, PA 19103-2838	United States	Senior Vice President - Corporate Development	0	0
Kristine A. Dankenbrink c/o Comcast Corporation One Comcast Center Philadelphia, PA 19103-2838	United States	Senior Vice President - Taxation	0	0
Joseph F. DiTrollo c/o Comcast Corporation One Comcast Center Philadelphia, PA 19103-2838	United States	Vice President - Financial Operations	0	0
Brian L. Roberts c/o Comcast Corporation One Comcast Center Philadelphia, PA 19103-2838	United States	Chairman	0	0
Comcast Holdings Corporation c/o Comcast Corporation One Comcast Center Philadelphia, PA 19103-2838	Pennsylvania Corporation	Sole Shareholder	100%	100%

Ownership Information for TGC Holdings, Inc.

Name/Address	Citizenship	Positional Interest	% of Votes	% of Total Assets
TGC Holdings, Inc. c/o Comcast Corporation One Comcast Center Philadelphia, PA 19103-2838	Delaware Corporation	N/A	N/A	N/A
Stephen B. Burke c/o Comcast Corporation One Comcast Center Philadelphia, PA 19103-2838	United States	Chief Operating Officer, Executive Vice President	0	0
Michael J. Angelakis c/o Comcast Corporation One Comcast Center Philadelphia, PA 19103-2838	United States	Chief Financial Officer, Executive Vice President	0	0
David L. Cohen c/o Comcast Corporation One Comcast Center Philadelphia, PA 19103-2838	United States	Executive Vice President, Assistant Secretary	0	0
Arthur R. Block c/o Comcast Corporation One Comcast Center Philadelphia, PA 19103-2838	United States	Senior Vice President, Assistant Treasurer, Assistant Secretary	0	0
Lawrence J. Salva c/o Comcast Corporation One Comcast Center Philadelphia, PA 19103-2838	United States	Senior Vice President, Chief Accounting Officer, and Controller	0	0
William E. Dordelman c/o Comcast Corporation One Comcast Center Philadelphia, PA 19103-2838	United States	Senior Vice President, Treasurer	0	0

Name/Address	Citizenship	Positional Interest	% of Votes	% of Total Assets
Robert S. Pick c/o Comcast Corporation One Comcast Center Philadelphia, PA 19103-2838	United States	Senior Vice President - Corporate Development	0	0
Kristine A. Dankenbrink c/o Comcast Corporation One Comcast Center Philadelphia, PA 19103-2838	United States	Senior Vice President - Taxation	0	0
Brian L. Roberts c/o Comcast Corporation One Comcast Center Philadelphia, PA 19103-2838	United States	Chairman	0	0
Comcast Holdings Corporation c/o Comcast Corporation One Comcast Center Philadelphia, PA 19103-2838	Pennsylvania Corporation	Sole Shareholder	100%	100%

Ownership Information for E! Holdings, Inc.

Name/Address	Citizenship	Positional Interest	% of Votes	% of Total Assets
E! Holdings, Inc. c/o Comcast Corporation One Comcast Center Philadelphia, PA 19103-2838	Delaware Corporation	N/A	N/A	N/A
Stephen B. Burke c/o Comcast Corporation One Comcast Center Philadelphia, PA 19103-2838	United States	Chief Operating Officer, Executive Vice President	0	0
Michael J. Angelakis c/o Comcast Corporation One Comcast Center Philadelphia, PA 19103-2838	United States	Chief Financial Officer, Executive Vice President	0	0
David L. Cohen c/o Comcast Corporation One Comcast Center Philadelphia, PA 19103-2838	United States	Executive Vice President, Assistant Secretary	0	0
Arthur R. Block c/o Comcast Corporation One Comcast Center Philadelphia, PA 19103-2838	United States	Senior Vice President, Assistant Treasurer, Assistant Secretary	0	0
Lawrence J. Salva c/o Comcast Corporation One Comcast Center Philadelphia, PA 19103-2838	United States	Senior Vice President, Chief Accounting Officer, and Controller	0	0
William E. Dordelman c/o Comcast Corporation One Comcast Center Philadelphia, PA 19103-2838	United States	Senior Vice President, Treasurer	0	0

Name/Address	Citizenship	Positional Interest	% of Votes	% of Total Assets
Robert S. Pick c/o Comcast Corporation One Comcast Center Philadelphia, PA 19103-2838	United States	Senior Vice President - Corporate Development	0	0
Kristine A. Dankenbrink c/o Comcast Corporation One Comcast Center Philadelphia, PA 19103-2838	United States	Senior Vice President - Taxation	0	0
Brian L. Roberts c/o Comcast Corporation One Comcast Center Philadelphia, PA 19103-2838	United States	Chairman	0	0
Comcast Holdings Corporation c/o Comcast Corporation One Comcast Center Philadelphia, PA 19103-2838	Pennsylvania Corporation	Sole Shareholder	100%	100%

Ownership Information for Comcast SportsNet New England Holdings, LLC

Name/Address	Citizenship	Positional Interest	% of Votes	% of Total Assets
Comcast SportsNet New England Holdings, LLC c/o Comcast Corporation One Comcast Center Philadelphia, PA 19103-2838	Delaware Limited Liability Company	N/A	N/A	N/A
Stephen B. Burke c/o Comcast Corporation One Comcast Center Philadelphia, PA 19103-2838	United States	Chief Operating Officer, Executive Vice President	0	0
Michael J. Angelakis c/o Comcast Corporation One Comcast Center Philadelphia, PA 19103-2838	United States	Chief Financial Officer, Executive Vice President	0	0
David L. Cohen c/o Comcast Corporation One Comcast Center Philadelphia, PA 19103-2838	United States	Executive Vice President, Assistant Secretary	0	0
Arthur R. Block c/o Comcast Corporation One Comcast Center Philadelphia, PA 19103-2838	United States	Senior Vice President, Assistant Treasurer, Assistant Secretary	0	0
Lawrence J. Salva c/o Comcast Corporation One Comcast Center Philadelphia, PA 19103-2838	United States	Senior Vice President, Chief Accounting Officer, and Controller	0	0
William E. Dordelman c/o Comcast Corporation One Comcast Center Philadelphia, PA 19103-2838	United States	Senior Vice President, Treasurer	0	0

Name/Address	Citizenship	Positional Interest	% of Votes	% of Total Assets
Robert S. Pick c/o Comcast Corporation One Comcast Center Philadelphia, PA 19103-2838	United States	Senior Vice President - Corporate Development	0	0
Kristine A. Dankenbrink c/o Comcast Corporation One Comcast Center Philadelphia, PA 19103-2838	United States	Senior Vice President - Taxation	0	0
Brian L. Roberts c/o Comcast Corporation One Comcast Center Philadelphia, PA 19103-2838	United States	Chairman	0	0
CSNNE Partner, LLC c/o Comcast Corporation One Comcast Center Philadelphia, PA 19103-2838	Delaware Limited Liability Company	Member	50%	50%
Comcast SportsNet NE Holdings, Inc. c/o Comcast Corporation One Comcast Center Philadelphia, PA 19103-2838	Delaware Corporation	Member	50%	50%

Ownership Information for CSNNE Partner, LLC

Name/Address	Citizenship	Positional Interest	% of Votes	% of Total Assets
CSNNE Partner, LLC c/o Comcast Corporation One Comcast Center Philadelphia, PA 19103-2838	Delaware Limited Liability Company	N/A	N/A	N/A
Stephen B. Burke c/o Comcast Corporation One Comcast Center Philadelphia, PA 19103-2838	United States	Chief Operating Officer, Executive Vice President	0	0
Michael J. Angelakis c/o Comcast Corporation One Comcast Center Philadelphia, PA 19103-2838	United States	Chief Financial Officer, Executive Vice President	0	0
David L. Cohen c/o Comcast Corporation One Comcast Center Philadelphia, PA 19103-2838	United States	Executive Vice President, Assistant Secretary	0	0
Arthur R. Block c/o Comcast Corporation One Comcast Center Philadelphia, PA 19103-2838	United States	Senior Vice President, Assistant Treasurer, Assistant Secretary	0	0
Lawrence J. Salva c/o Comcast Corporation One Comcast Center Philadelphia, PA 19103-2838	United States	Senior Vice President	0	0
William E. Dordelman c/o Comcast Corporation One Comcast Center Philadelphia, PA 19103-2838	United States	Senior Vice President, Treasurer	0	0

Name/Address	Citizenship	Positional Interest	% of Votes	% of Total Assets
Robert S. Pick c/o Comcast Corporation One Comcast Center Philadelphia, PA 19103-2838	United States	Senior Vice President - Corporate Development	0	0
Kristine A. Dankenbrink c/o Comcast Corporation One Comcast Center Philadelphia, PA 19103-2838	United States	Senior Vice President - Taxation	0	0
Brian L. Roberts c/o Comcast Corporation One Comcast Center Philadelphia, PA 19103-2838	United States	Chairman	0	0
Comcast Holdings Corporation c/o Comcast Corporation One Comcast Center Philadelphia, PA 19103-2838	Pennsylvania Corporation	Sole Member	100%	100%

Ownership Information for Comcast SportsNet NE Holdings, Inc.

Name/Address	Citizenship	Positional Interest	% of Votes	% of Total Assets
Comcast SportsNet NE Holdings, Inc. c/o Comcast Corporation One Comcast Center Philadelphia, PA 19103-2838	Delaware Corporation	N/A	N/A	N/A
Stephen B. Burke c/o Comcast Corporation One Comcast Center Philadelphia, PA 19103-2838	United States	Chief Operating Officer, Executive Vice President	0	0
Michael J. Angelakis c/o Comcast Corporation One Comcast Center Philadelphia, PA 19103-2838	United States	Chief Financial Officer, Executive Vice President	0	0
David L. Cohen c/o Comcast Corporation One Comcast Center Philadelphia, PA 19103-2838	United States	Executive Vice President, Assistant Secretary	0	0
Arthur R. Block c/o Comcast Corporation One Comcast Center Philadelphia, PA 19103-2838	United States	Senior Vice President, Assistant Treasurer, Assistant Secretary, Director	0	0
Lawrence J. Salva c/o Comcast Corporation One Comcast Center Philadelphia, PA 19103-2838	United States	Senior Vice President	0	0

Name/Address	Citizenship	Positional Interest	% of Votes	% of Total Assets
William E. Dordelman c/o Comcast Corporation One Comcast Center Philadelphia, PA 19103-2838	United States	Senior Vice President, Treasurer	0	0
Robert S. Pick c/o Comcast Corporation One Comcast Center Philadelphia, PA 19103-2838	United States	Senior Vice President - Corporate Development	0	0
Kristine Dankenbrink c/o Comcast Corporation One Comcast Center Philadelphia, PA 19103-2838	United States	Senior Vice President - Taxation	0	0
Brian L. Roberts c/o Comcast Corporation One Comcast Center Philadelphia, PA 19103-2838	United States	Chairman	0	0
Comcast Holdings Corporation c/o Comcast Corporation One Comcast Center Philadelphia, PA 19103-2838	Pennsylvania Corporation	Sole Shareholder	100%	100%

Ownership Information for Comcast SportsNet Philadelphia Holdings, LLC

Name/Address	Citizenship	Positional Interest	% of Votes	% of Total Assets
Comcast SportsNet Philadelphia Holdings, LLC c/o Comcast Corporation One Comcast Center Philadelphia, PA 19103-2838	Delaware Limited Liability Company	N/A	N/A	N/A
Stephen B. Burke c/o Comcast Corporation One Comcast Center Philadelphia, PA 19103-2838	United States	Chief Operating Officer, Executive Vice President	0	0
Michael J. Angelakis c/o Comcast Corporation One Comcast Center Philadelphia, PA 19103-2838	United States	Chief Financial Officer, Executive Vice President	0	0
David L. Cohen c/o Comcast Corporation One Comcast Center Philadelphia, PA 19103-2838	United States	Executive Vice President, Assistant Secretary	0	0
Arthur R. Block c/o Comcast Corporation One Comcast Center Philadelphia, PA 19103-2838	United States	Senior Vice President, Assistant Treasurer, Secretary, Director	0	0
Lawrence J. Salva c/o Comcast Corporation One Comcast Center Philadelphia, PA 19103-2838	United States	Senior Vice President, Chief Accounting Officer, Controller	0	0
William E. Dordelman c/o Comcast Corporation One Comcast Center Philadelphia, PA 19103-2838	United States	Senior Vice President, Treasurer	0	0

Name/Address	Citizenship	Positional Interest	% of Votes	% of Total Assets
Robert S. Pick c/o Comcast Corporation One Comcast Center Philadelphia, PA 19103-2838	United States	Senior Vice President - Corporate Development	0	0
Kristine A. Dankenbrink c/o Comcast Corporation One Comcast Center Philadelphia, PA 19103-2838	United States	Senior Vice President - Taxation	0	0
Joseph F. DiTrollo c/o Comcast Corporation One Comcast Center Philadelphia, PA 19103-2838	United States	Vice President - Financial Operations	0	0
Brian L. Roberts c/o Comcast Corporation One Comcast Center Philadelphia, PA 19103-2838	United States	Chairman	0	0
COM Sports Ventures, Inc. c/o Comcast Corporation One Comcast Center Philadelphia, PA 19103-2838	Delaware Corporation	Member	61.55%	61.55%
Comcast Holdings Corporation c/o Comcast Corporation One Comcast Center Philadelphia, PA 19103-2838	Pennsylvania Corporation	Member	38.45%	38.45%

Ownership Information for COM Sports Ventures, Inc.

Name/Address	Citizenship	Positional Interest	% of Votes	% of Total Assets
COM Sports Ventures, Inc. c/o Comcast Corporation One Comcast Center Philadelphia, PA 19103-2838	Delaware Corporation	N/A	N/A	N/A
Michael J. Angelakis c/o Comcast Corporation One Comcast Center Philadelphia, PA 19103-2838	United States	President, Chief Financial Officer, Director	0	0
David L. Cohen c/o Comcast Corporation One Comcast Center Philadelphia, PA 19103-2838	United States	Vice President, Secretary, Director	0	0
Arthur R. Block c/o Comcast Corporation One Comcast Center Philadelphia, PA 19103-2838	United States	Treasurer, Assistant Secretary, Director	0	0
Comcast Holdings Corporation c/o Comcast Corporation One Comcast Center Philadelphia, PA 19103-2838	Pennsylvania Corporation	Sole Shareholder	100%	100%

Ownership Information for CSN Bay Area Holdings, Inc.

Name/Address	Citizenship	Positional Interest	% of Votes	% of Total Assets
CSN Bay Area Holdings, Inc. c/o Comcast Corporation One Comcast Center Philadelphia, PA 19103-2838	Delaware Corporation	N/A	N/A	N/A
Stephen B. Burke c/o Comcast Corporation One Comcast Center Philadelphia, PA 19103-2838	United States	Chief Operating Officer, Executive Vice President	0	0
Michael J. Angelakis c/o Comcast Corporation One Comcast Center Philadelphia, PA 19103-2838	United States	Chief Financial Officer, Executive Vice President	0	0
David L. Cohen c/o Comcast Corporation One Comcast Center Philadelphia, PA 19103-2838	United States	Executive Vice President, Assistant Secretary	0	0
Arthur R. Block c/o Comcast Corporation One Comcast Center Philadelphia, PA 19103-2838	United States	Senior Vice President, Assistant Treasurer, Assistant Secretary, Director	0	0
Lawrence J. Salva c/o Comcast Corporation One Comcast Center Philadelphia, PA 19103-2838	United States	Senior Vice President, Chief Accounting Officer, and Controller	0	0
William E. Dordelman c/o Comcast Corporation One Comcast Center Philadelphia, PA 19103-2838	United States	Senior Vice President, Treasurer	0	0

Name/Address	Citizenship	Positional Interest	% of Votes	% of Total Assets
Robert S. Pick c/o Comcast Corporation One Comcast Center Philadelphia, PA 19103-2838	United States	Senior Vice President - Corporate Development	0	0
Kristine A. Dankenbrink c/o Comcast Corporation One Comcast Center Philadelphia, PA 19103-2838	United States	Senior Vice President - Taxation	0	0
Brian L. Roberts c/o Comcast Corporation One Comcast Center Philadelphia, PA 19103-2838	United States	Chairman	0	0
Comcast Holdings Corporation c/o Comcast Corporation One Comcast Center Philadelphia, PA 19103-2838	Pennsylvania Corporation	Sole Shareholder	100%	100%

Ownership Information for CHC, LLC

Name/Address	Citizenship	Positional Interest	% of Votes	% of Total Assets
CHC, LLC c/o Comcast Corporation One Comcast Center Philadelphia, PA 19103-2838	Delaware Corporation	N/A	N/A	N/A
Stephen B. Burke c/o Comcast Corporation One Comcast Center Philadelphia, PA 19103-2838	United States	Chief Operating Officer, Executive Vice President	0	0
Michael J. Angelakis c/o Comcast Corporation One Comcast Center Philadelphia, PA 19103-2838	United States	Chief Financial Officer, Executive Vice President	0	0
David L. Cohen c/o Comcast Corporation One Comcast Center Philadelphia, PA 19103-2838	United States	Executive Vice President, Assistant Secretary	0	0
Arthur R. Block c/o Comcast Corporation One Comcast Center Philadelphia, PA 19103-2838	United States	Senior Vice President, Assistant Treasurer, Assistant Secretary	0	0
Lawrence J. Salva c/o Comcast Corporation One Comcast Center Philadelphia, PA 19103-2838	United States	Senior Vice President, Chief Accounting Officer, and Controller	0	0
William E. Dordelman c/o Comcast Corporation One Comcast Center Philadelphia, PA 19103-2838	United States	Senior Vice President, Treasurer	0	0

Name/Address	Citizenship	Positional Interest	% of Votes	% of Total Assets
Robert S. Pick c/o Comcast Corporation One Comcast Center Philadelphia, PA 19103-2838	United States	Senior Vice President - Corporate Development	0	0
Kristine A. Dankenbrink c/o Comcast Corporation One Comcast Center Philadelphia, PA 19103-2838	United States	Senior Vice President - Taxation	0	0
Brian L. Roberts c/o Comcast Corporation One Comcast Center Philadelphia, PA 19103-2838	United States	Chairman	0	0
Comcast Holdings Corporation c/o Comcast Corporation One Comcast Center Philadelphia, PA 19103-2838	Pennsylvania Corporation	Sole Member	100%	100%

Ownership Information for Comcast Holdings Corporation

Name/Address	Citizenship	Positional Interest	% of Votes	% of Total Assets
Comcast Holdings Corporation c/o Comcast Corporation One Comcast Center Philadelphia, PA 19103-2838	Pennsylvania Corporation	N/A	N/A	N/A
Brian L. Roberts c/o Comcast Corporation One Comcast Center Philadelphia, PA 19103-2838	United States	President, Chief Executive Officer, Director	0	0
Stephen B. Burke c/o Comcast Corporation One Comcast Center Philadelphia, PA 19103-2838	United States	Chief Operating Officer, Executive Vice President	0	0
Michael J. Angelakis c/o Comcast Corporation One Comcast Center Philadelphia, PA 19103-2838	United States	Chief Financial Officer, Executive Vice President, Director	0	0
David L. Cohen c/o Comcast Corporation One Comcast Center Philadelphia, PA 19103-2838	United States	Executive Vice President, Assistant Secretary, Director	0	0
Arthur R. Block c/o Comcast Corporation One Comcast Center Philadelphia, PA 19103-2838	United States	Senior Vice President, Assistant Treasurer, General Counsel, Secretary, Director	0	0
Lawrence J. Salva c/o Comcast Corporation One Comcast Center Philadelphia, PA 19103-2838	United States	Senior Vice President, Chief Accounting Officer, Controller	0	0

Name/Address	Citizenship	Positional Interest	% of Votes	% of Total Assets
William E. Dordelman c/o Comcast Corporation One Comcast Center Philadelphia, PA 19103-2838	United States	Senior Vice President, Treasurer	0	0
Robert S. Pick c/o Comcast Corporation One Comcast Center Philadelphia, PA 19103-2838	United States	Senior Vice President - Corporate Development	0	0
Kristine A. Dankenbrink c/o Comcast Corporation One Comcast Center Philadelphia, PA 19103-2838	United States	Senior Vice President - Taxation	0	0
Joseph F. DiTrollo c/o Comcast Corporation One Comcast Center Philadelphia, PA 19103-2838	United States	Vice President - Financial Operations	0	0
Comcast Corporation One Comcast Center Philadelphia, PA 19103-2838	Pennsylvania Corporation	Sole Shareholder	100%	100%

Ownership Information for Comcast Corporation

Name/Address	Citizenship	Positional Interest	% of Votes	% of Total Assets
Comcast Corporation One Comcast Center Philadelphia, PA 19103-2838	Pennsylvania Corporation	N/A	N/A	N/A
Brian L. Roberts c/o Comcast Corporation One Comcast Center Philadelphia, PA 19103-2838	United States	Chairman, President, Chief Executive Officer	33.33%	<1%
Stephen B. Burke c/o Comcast Corporation One Comcast Center Philadelphia, PA 19103-2838	United States	Chief Operating Officer, Executive Vice President	<1%	<1%
Michael J. Angelakis c/o Comcast Corporation One Comcast Center Philadelphia, PA 19103-2838	United States	Chief Financial Officer, Executive Vice President	<1%	<1%
David L. Cohen c/o Comcast Corporation One Comcast Center Philadelphia, PA 19103-2838	United States	Executive Vice President, Assistant Secretary	<1%	<1%
Arthur R. Block c/o Comcast Corporation One Comcast Center Philadelphia, PA 19103-2838	United States	Senior Vice President, Assistant Treasurer, General Counsel, Secretary	<1%	<1%
Lawrence J. Salva c/o Comcast Corporation One Comcast Center Philadelphia, PA 19103-2838	United States	Senior Vice President, Chief Accounting Officer, Controller	<1%	<1%
William E. Dordelman c/o Comcast Corporation One Comcast Center Philadelphia, PA 19103-2838	United States	Senior Vice President, Treasurer	<1%	<1%

Name/Address	Citizenship	Positional Interest	% of Votes	% of Total Assets
D'Arcy F. Rudnay c/o Comcast Corporation One Comcast Center Philadelphia, PA 19103-2838	United States	Senior Vice President - Corporate Communications	<1%	<1%
Robert S. Pick c/o Comcast Corporation One Comcast Center Philadelphia, PA 19103-2838	United States	Senior Vice President - Corporate Development	<1%	<1%
Joseph W. Waz, Jr. c/o Comcast Corporation One Comcast Center Philadelphia, PA 19103-2838	United States	Senior Vice President - External Affairs and Public Policy	<1%	<1%
Amy L. Banse c/o Comcast Corporation One Comcast Center Philadelphia, PA 19103-2838	United States	Senior Vice President - Interactive Media	<1%	<1%
Marlene S. Dooner c/o Comcast Corporation One Comcast Center Philadelphia, PA 19103-2838	United States	Senior Vice President - Investor Relations	<1%	<1%
Robert S. Victor c/o Comcast Corporation One Comcast Center Philadelphia, PA 19103-2838	United States	Senior Vice President - Strategic and Financial Planning	<1%	<1%
Mark A. Coblitz c/o Comcast Corporation One Comcast Center Philadelphia, PA 19103-2838	United States	Senior Vice President - Strategic Planning	<1%	<1%
Kristine A. Dankenbrink c/o Comcast Corporation One Comcast Center Philadelphia, PA 19103-2838	United States	Senior Vice President - Taxation	<1%	<1%

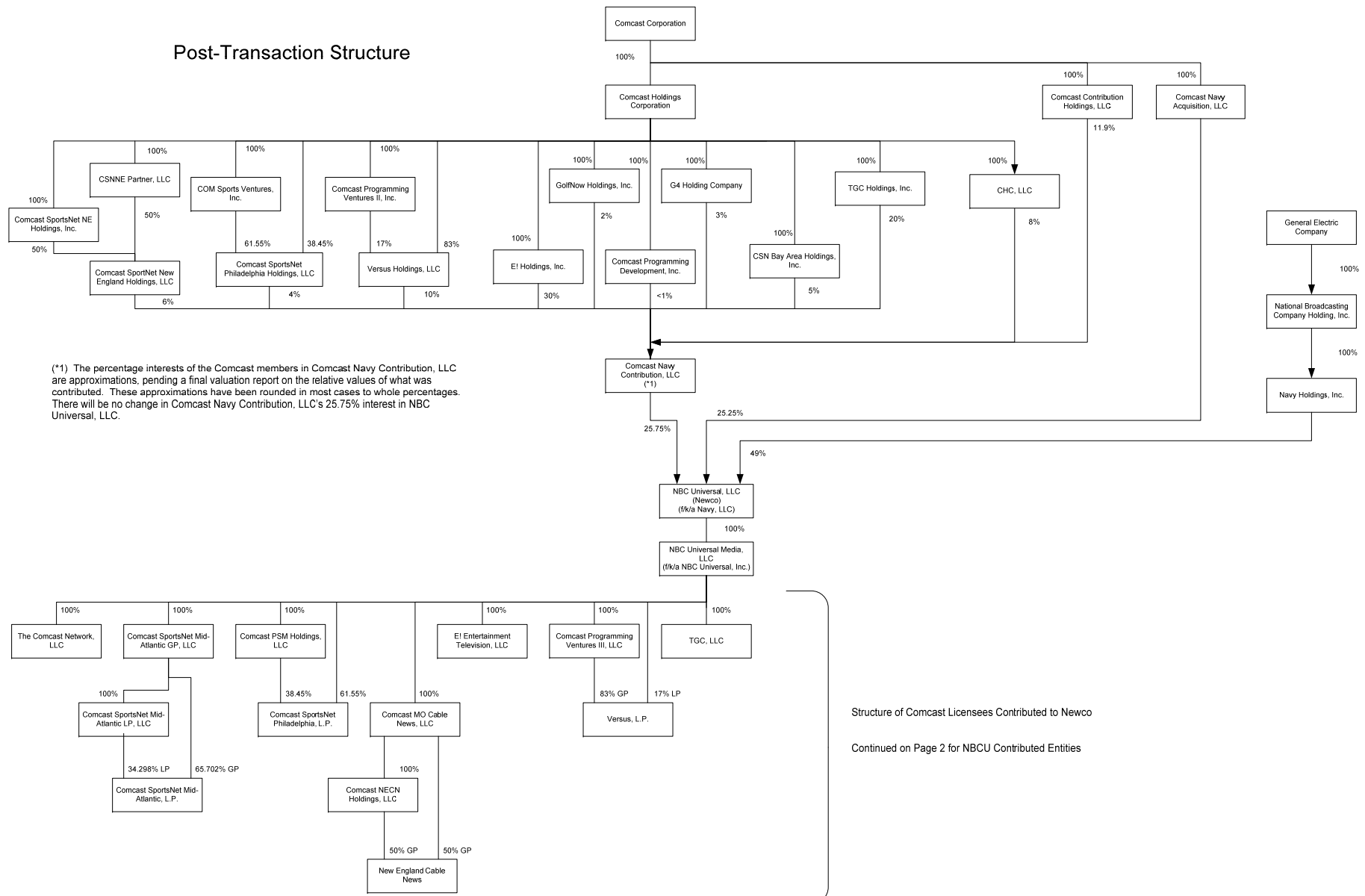
Name/Address	Citizenship	Positional Interest	% of Votes	% of Total Assets
Jennifer Khoury Newcomb c/o Comcast Corporation One Comcast Center Philadelphia, PA 19103-2838	United States	Vice President - Corporate Communications	<1%	<1%
Charisse R. Lillie c/o Comcast Corporation One Comcast Center Philadelphia, PA 19103-2838	United States	Vice President - Community Investment	<1%	<1%
Karen Dougherty Buchholz c/o Comcast Corporation One Comcast Center Philadelphia, PA 19103-2838	United States	Vice President - Corporate Administration	<1%	<1%
A. Melissa Maxfield c/o Comcast Corporation One Comcast Center Philadelphia, PA 19103-2838	United States	Vice President - Federal Government Affairs	<1%	<1%
Joseph F. DiTrollo c/o Comcast Corporation One Comcast Center Philadelphia, PA 19103-2838	United States	Vice President - Financial Operations	<1%	<1%
Leonard Gatti c/o Comcast Corporation One Comcast Center Philadelphia, PA 19103-2838	United States	Vice President - Financial Reporting	<1%	<1%
Kathryn Zachem c/o Comcast Corporation One Comcast Center Philadelphia, PA 19103-2838	United States	Vice President - Regulatory Affairs	<1%	<1%
James Finnegan c/o Comcast Corporation One Comcast Center Philadelphia, PA 19103-2838	United States	Vice President - Strategic Intellectual Property	<1%	<1%

Name/Address	Citizenship	Positional Interest	% of Votes	% of Total Assets
Payne D. Brown c/o Comcast Corporation One Comcast Center Philadelphia, PA 19103-2838	United States	Vice President - Strategic Initiatives	<1%	<1%
Thomas J. Donnelly Comcast Corporation One Comcast Center Philadelphia, PA 19103-2838	United States	Vice President - Taxation	<1%]	<1%
Sena Fitzmaurice Comcast Corporation One Comcast Center Philadelphia, PA 19103-2838	United States	Vice President - Government Communications	<1%	<1%
Colleen Rooney Comcast Corporation One Comcast Center Philadelphia, PA 19103-2838	United States	Vice President - Internal Communications	<1%	<1%
Cynthia Hook c/o Comcast Corporation One Comcast Center Philadelphia, PA 19103-2838	United States	Senior Vice President and General Auditor	<1%	<1%
Dr. Judith Rodin c/o Comcast Corporation One Comcast Center Philadelphia, PA 19103-2838	United States	Director	<1%	<1%
Gerald L. Hassell c/o Comcast Corporation One Comcast Center Philadelphia, PA 19103-2838	United States	Director	<1%	<1%
J. Michael Cook c/o Comcast Corporation One Comcast Center Philadelphia, PA 19103-2838	United States	Director	<1%	<1%

Name/Address	Citizenship	Positional Interest	% of Votes	% of Total Assets
Jeffrey A. Honickman c/o Comcast Corporation One Comcast Center Philadelphia, PA 19103-2838	United States	Director	<1%	<1%
Joseph J. Collins c/o Comcast Corporation One Comcast Center Philadelphia, PA 19103-2838	United States	Director	<1%	<1%
Julian A. Brodsky c/o Comcast Corporation One Comcast Center Philadelphia, PA 19103-2838	United States	Director	<1%	<1%
Kenneth J. Bacon c/o Comcast Corporation One Comcast Center Philadelphia, PA 19103-2838	United States	Director	<1%	<1%
Michael I. Sovern c/o Comcast Corporation One Comcast Center Philadelphia, PA 19103-2838	United States	Director	<1%	<1%
Edward D. Breen c/o Comcast Corporation One Comcast Center Philadelphia, PA 19103-2838	United States	Director	<1%	<1%
Ralph J. Roberts c/o Comcast Corporation One Comcast Center Philadelphia, PA 19103-2838	United States	Director	<1%	<1%
S. Decker Anstrom c/o Comcast Corporation One Comcast Center Philadelphia, PA 19103-2838	United States	Director	<1%	<1%

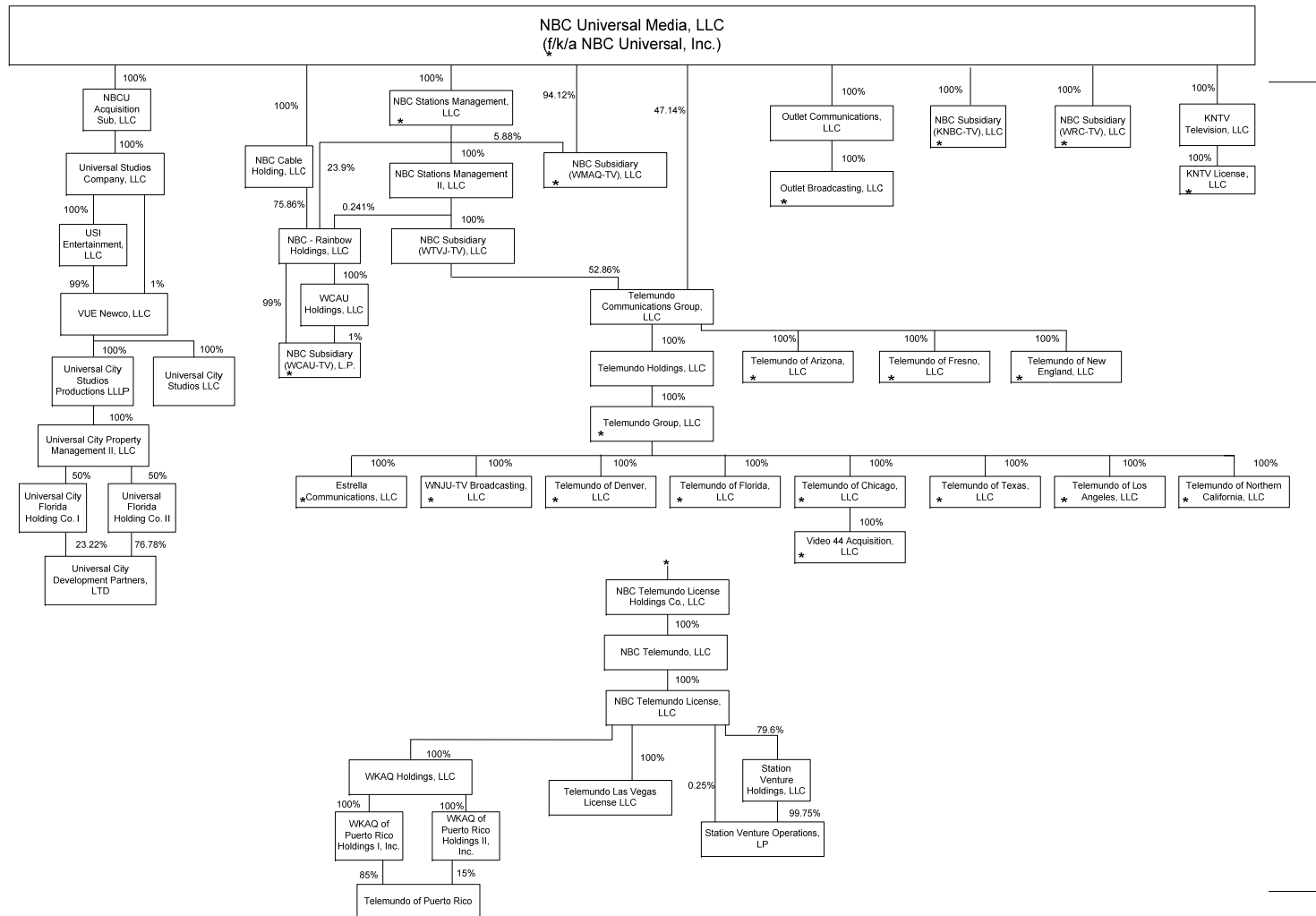
Name/Address	Citizenship	Positional Interest	% of Votes	% of Total Assets
Sheldon M. Bonovitz c/o Comcast Corporation One Comcast Center Philadelphia, PA 19103-2838	United States	Director	<1%	<1%

**Part IV – Chart Showing Ownership Structure
After Consummation of Proposed Transaction**



**Part IV – Chart Showing Ownership Structure
After Consummation of Proposed Transaction**

Post-Transaction Structure, Continued



Structure of NBCU Licensees Contributed to Newco

*Entities marked with an asterisk are direct owners of NBC Telemundo License Holding Co., LLC. In the aggregate these entities own 100% of NBC Telemundo License Co., LLC.