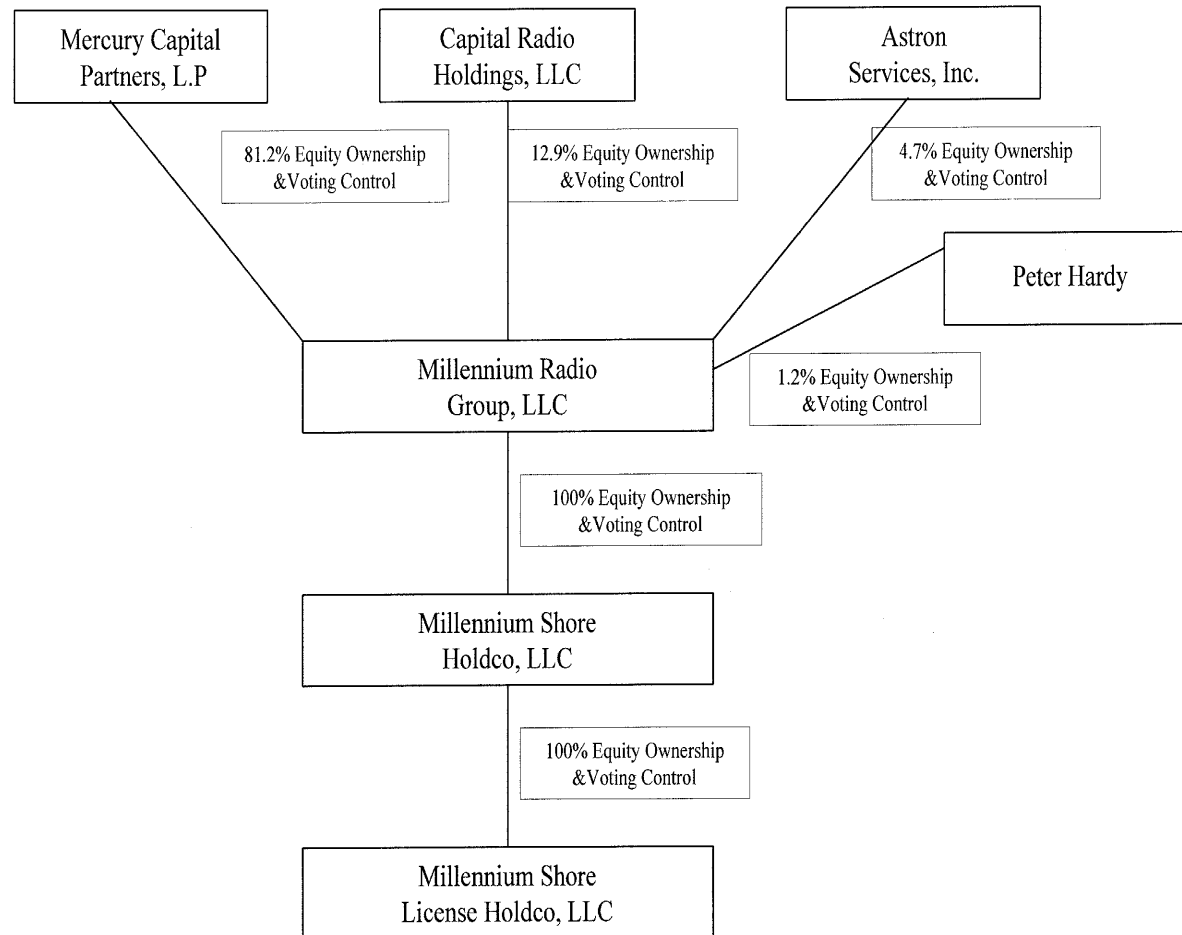
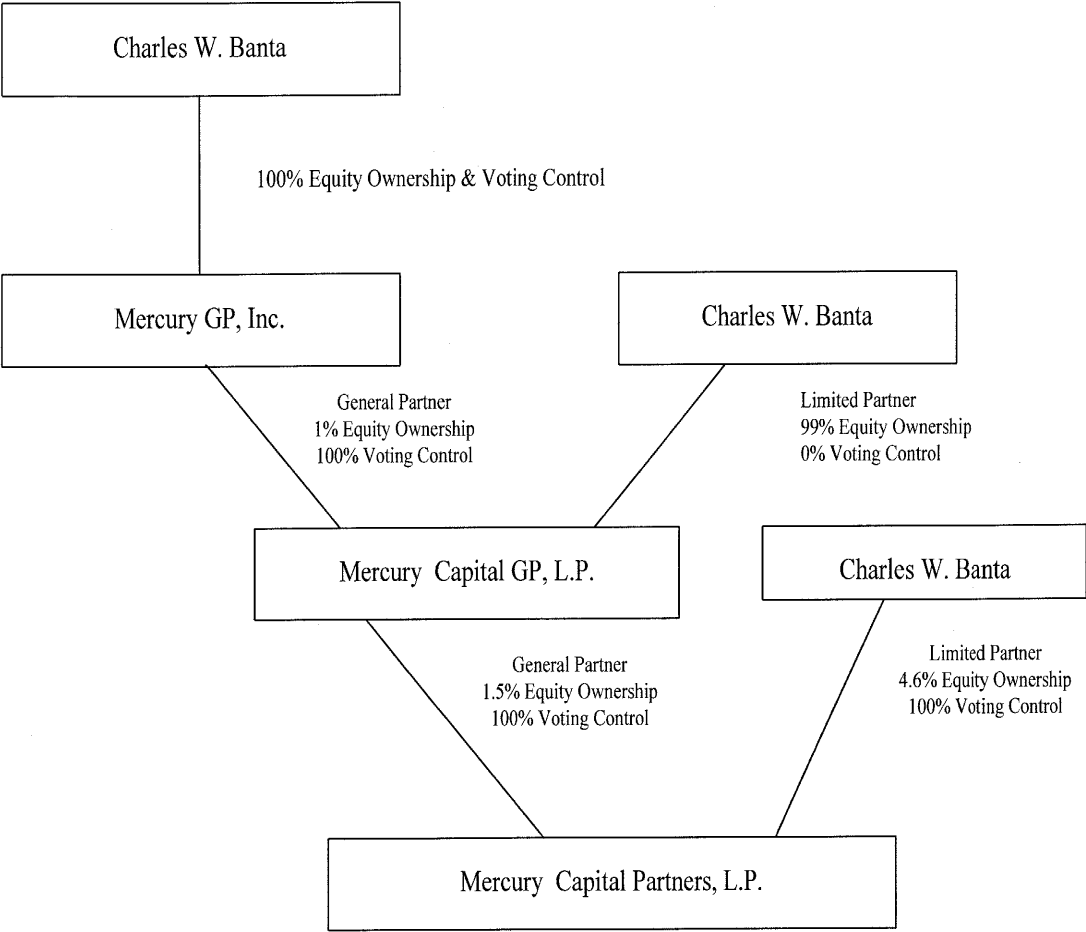


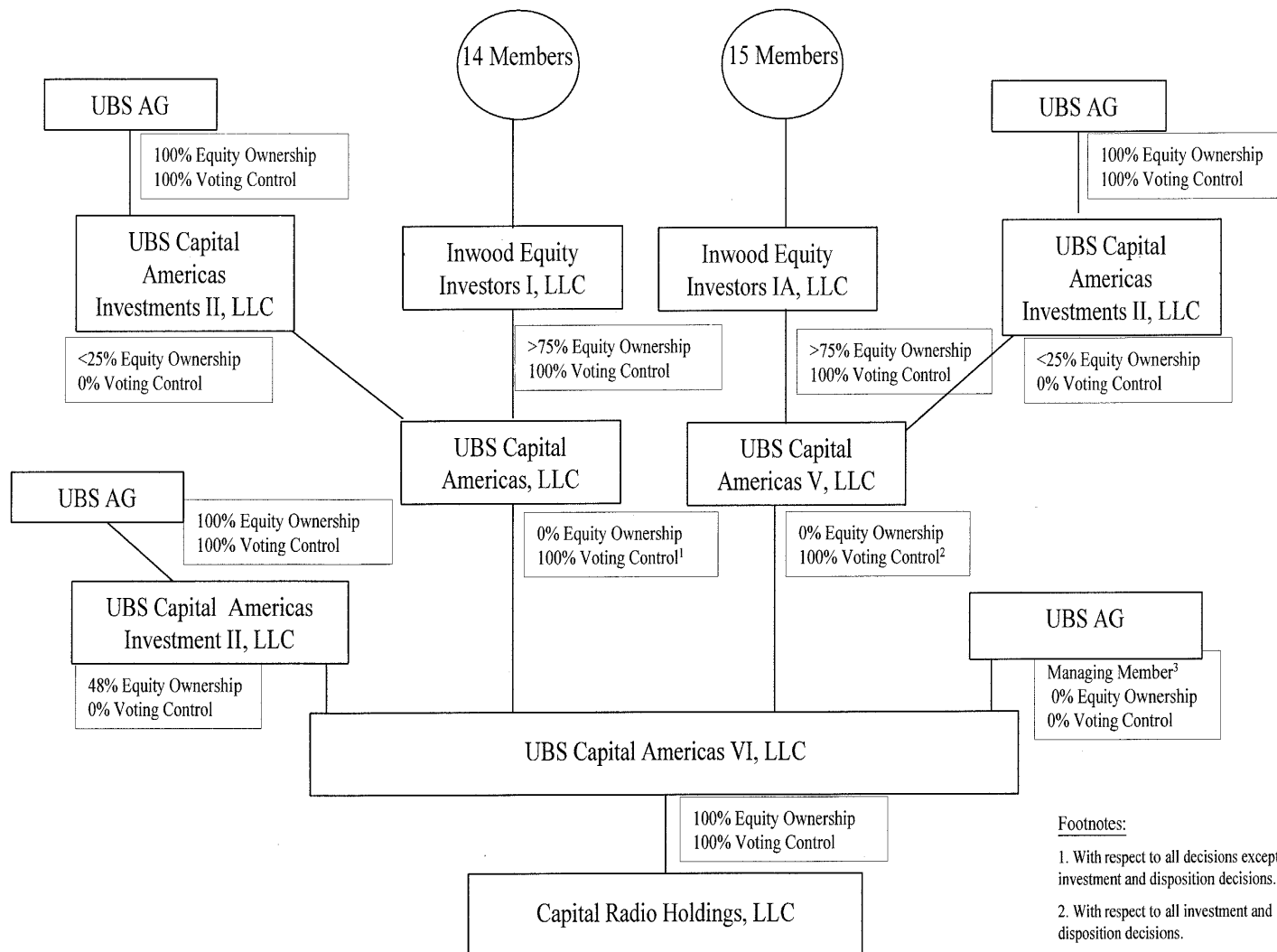
**Millennium Shore
License Holdco, LLC**



Mercury Capital Partners, L.P.



Capital Radio Holdings, LLC



Footnotes:

1. With respect to all decisions except investment and disposition decisions.
2. With respect to all investment and disposition decisions.
3. Duties as Managing Members are "ministerial" and purely administrative in nature.

Astron Services, Inc.

