

Exhibit 19 Page 1
Network of Glory, LLC
NCE FM Interference Area to TV 6
Manhattan, Kansas

The purpose of this exhibit is to show compliance with §73.525 of the Commission's Rules. The Rules require that an applicant proposing operation on FM Channel 210 must be 196 kilometers from a television channel 6 facility.

There is one affected TV 6 Class A station.

1. KTMJ-LP - 45 km distant

First, the relative HAAT figures were generated for the above station using the NGDC 30 Second Database and the data from the FCC TV Database. The distance to the 47 dBu contour was predicted according to the procedures specified in §73.684 of the Commission's Rules, "Prediction of Coverage," using the F(50,50) curves in Figure 9 of §73.699.

The applicant chooses to use circular polarization and adjustments for vertical only polarization or television receiving antenna directivity have not been utilized.

A table of the proposed NCE FM F(50,10) interfering contour to the KTMJ-LP television channel 6 F(50,50) protected contour may be seen as Table 1 of this exhibit.

A plot of the proposed NCE-FM stations 67.25 dBu F(50,10) interfering contour to the television channel 6 47 dBu F(50,50) protected contour may be seen as Figure 1 of this exhibit, note that these contours do not overlap. Therefore, it may be concluded that the proposed NCE-FM station will not cause any interference to the reception of TV-6, and the application complies with §73.525 of the Commission's Rules as pertains to interference to the reception of TV channel 6 by NCE-FM stations.

Exhibit 19 Table 1
Network of Glory, LLC
NCE FM Interference to Television Channel 6
Manhattan, Kansas

TV Contour dB	U/D Ratio dB	FM Contour dB
47.00	20.25	67.25

No Overlap with KTMJ-LP TV 6

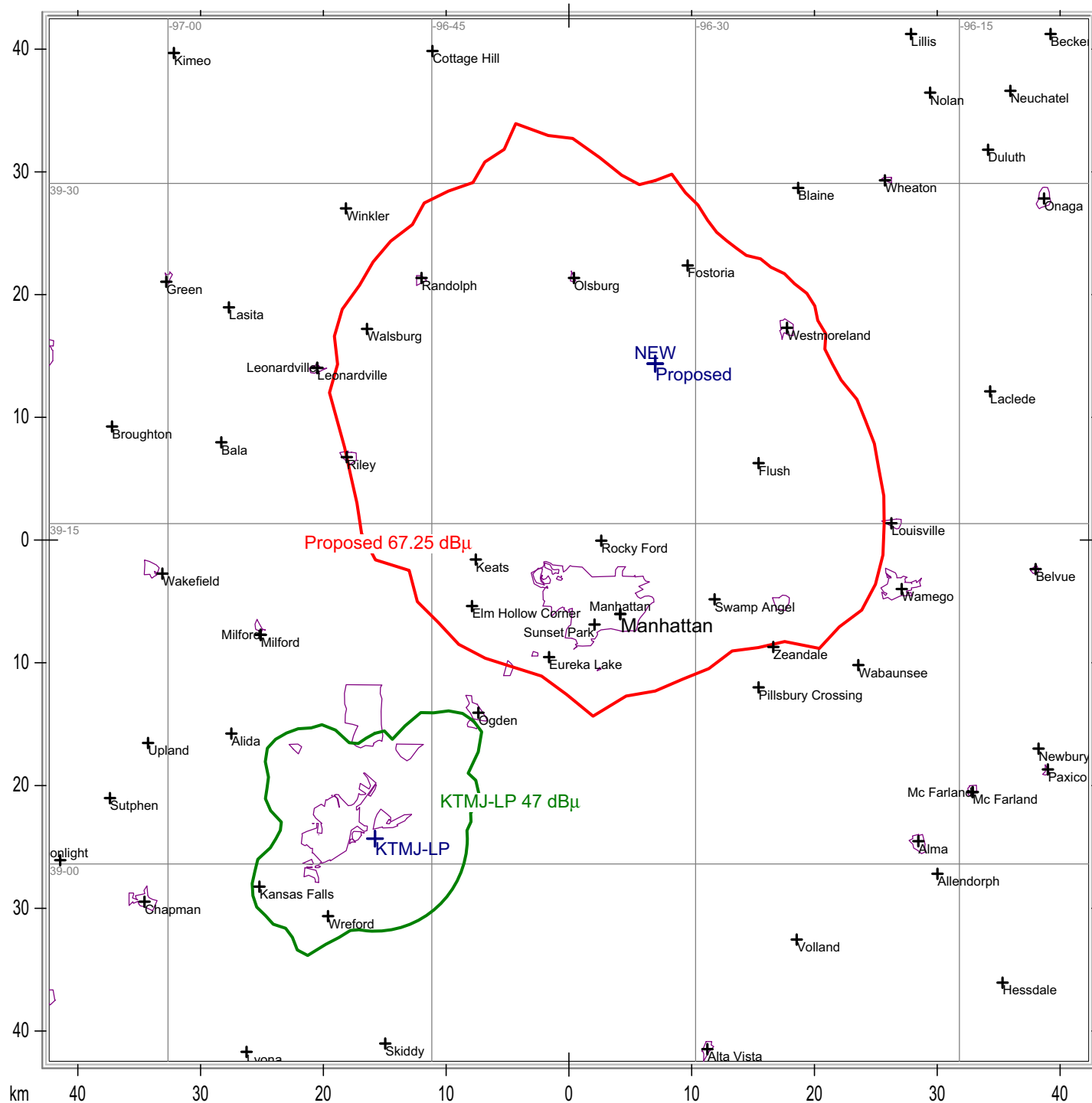


Exhibit 19 Figure 1
Network of Glory, LLC
No Overlap with TV 6
Manhattan, Kansas

State Borders City Borders Lat/Lon Grid