

**June 2008
New FM Translator
Sunnyslope, Washington Channel 232D
Allocation Study**

The attached spacing study shows the spacing between the proposed translator site and the location of cochannel and adjacent channel stations and proposals. This study was made with the Commission's Class A spacing requirements, and individual situations were examined to determine the lack of prohibited contour overlap per the requirements of §74.1204 of the Rules.

The proposed transmitter site is located inside the 60 dBu protected contour of second-adjacent-channel station KZAL 234C3 Manson. The proposed 100 dBu interfering contour, however, extends only 496 meters from the tower site, as calculated for free-space propagation and as depicted on the attached transmitter site map. This area is unpopulated, and therefore it is believed that the proposed facility satisfies interference protection requirements to KZAL.

The proposed operation is with less than 100 Watts ERP, and therefore the spacing restrictions to stations which are 53 or 54 channels removed from the proposed operation do not apply.

=====

SEARCH PARAMETERS FM Database Date: 080612

Channel: 232A 94.3 MHz Page 1
 Latitude: 47 26 16
 Longitude: 120 10 42
 Safety Zone: 50 km
 Job Title: SUNNYSLOPE 232D TRANSLATOR

Call Status	City St	FCC File No.	Channel Freq.	ERP(kW) HAAT(m)	Latitude Longitude	Bearing deg-True	Dist (km)	Req (km)
KXAA LIC	CLE ELUM WA BLH-021114AAA	229A 93.7	6.000 29.0	47-09-06 120-47-23	235.6	56.13 25.13	31 CLEAR	
KTAC LIC	EPHRATA WA BLH-020618AAE	230C3 93.9	18.000 117.0	47-19-13 119-34-22	105.8	47.56 5.56	42 CLOSE	
K230AX LIC	WENATCHEE, ETC. WA BLFT-070515ADE	230D 93.9	0.048 DA 784.0	47-30-33 120-14-22	330.0	9.18 0.00	0 TRANS	
KMPSaux LIC	SEATTLE WA BXMLH-020311AAS	231C 94.1	58.000 DA 714.0	47-30-14 121-58-29	273.8	135.62 0.00	0 AUX	
KMPS-FM LIC	SEATTLE WA BLH-001023AEZ	231C 94.1	73.000 698.0	47-30-17 121-58-04	273.8	135.11 -29.89	165 SHORT	
KMPSaux LIC	SEATTLE WA BXLH-060530AHC	231C 94.1	53.000 371.0	47-32-37 122-06-35	275.3	146.02 0.00	0 AUX	
NEW-T APP	CHELAN WA BNPFT-030314AVS	232D 94.3	0.250 -15.0	47-50-45 120-01-02	14.8	46.96 0.00	0 TRANS	
K232CV LIC	ELLENSBURG WA BLFT-940519TD	232D 94.3	0.036 DA 514.0	46-53-13 120-26-26	198.0	64.39 0.00	0 TRANS	
K232AN LIC	EPHRATA, ETC. WA BLFT-810601IE	232D 94.3	0.041 DA 234.0	47-18-56 119-35-08	106.7	46.78 0.00	0 TRANS	
NEW-T APP	MAZAMA WA BNPFT-030317EGP	232D 94.3	0.060 DA 213.0	48-29-00 120-15-08	357.3	116.39 0.00	0 TRANS	
NEW-T APP	SUNNYSLOPE WA BNPFT-030313AGE	232D 94.3	0.100 77.0	47-27-22 120-20-50	279.2	12.90 0.00	0 TRANS	
NEW-T APP	BREWSTER WA BNPFT-030317CDN	233D 94.5	0.001 1312.0	48-00-59 119-58-51	12.9	66.02 0.00	0 TRANS	
NEW-T APP	MANSON WA BNPFT-030317AAX	233D 94.5	0.007 522.0	47-51-15 120-10-00	1.1	46.30 0.00	0 TRANS	
NEW-T APP	WENATCHEE WA BNPFT-030317CDL	233D 94.5	0.002 549.0	48-30-33 120-14-22	357.8	119.21 0.00	0 TRANS	

=====

SEARCH PARAMETERS FM Database Date: 080612

Channel: 232A 94.3 MHz Page 2

Latitude: 47 26 16

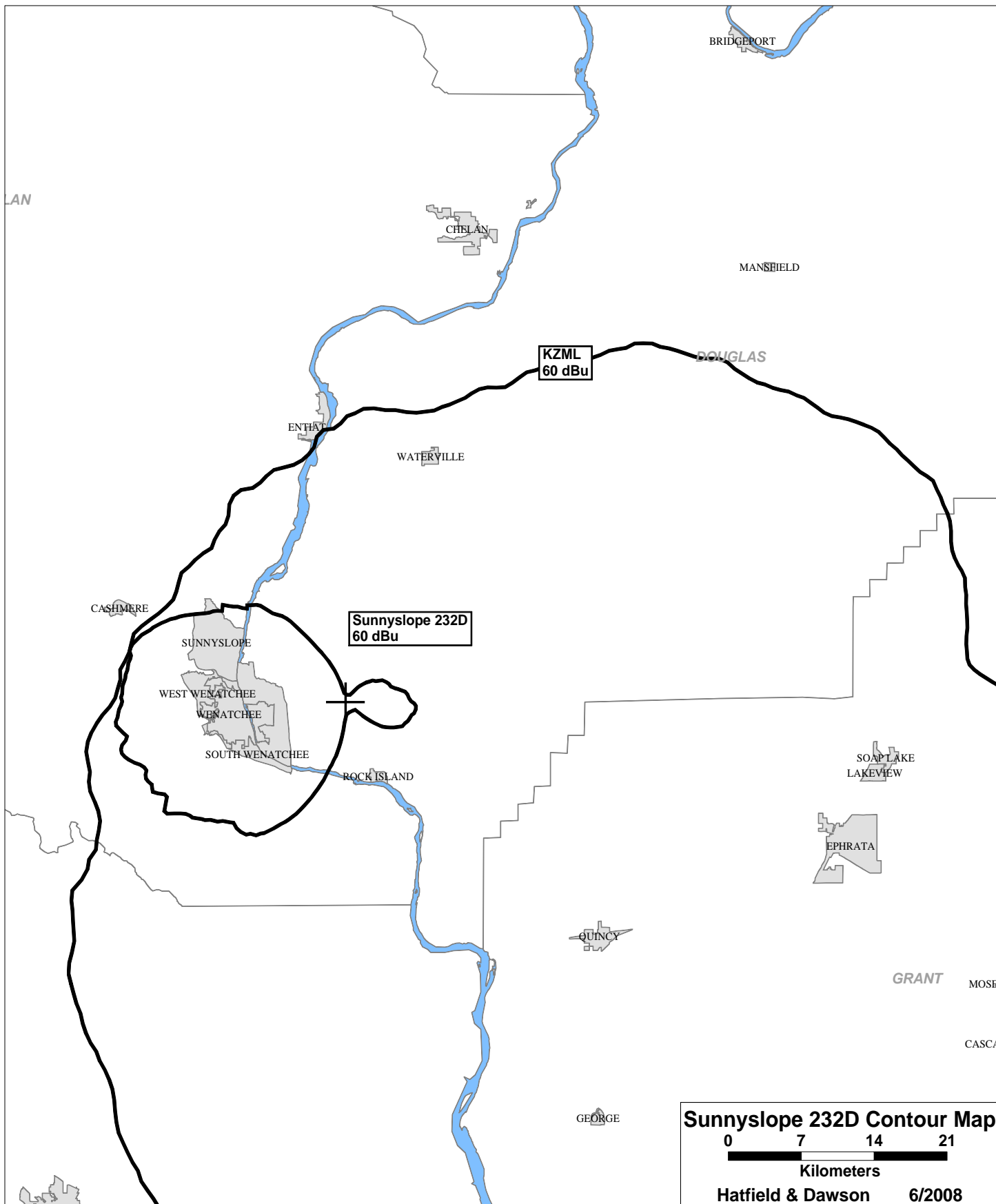
Longitude: 120 10 42

Safety Zone: 50 km

Job Title: SUNNYSLOPE 232D TRANSLATOR

Call Status	City St	FCC File No.	Channel Freq.	ERP(kW) HAAT(m)	Latitude Longitude	Bearing deg-True	Dist (km)	Req (km)
KATS LIC	YAKIMA WA	BLH-840625CS	233C1 94.5	100.000 277.0	46-31-59 120-30-14	193.9	103.58 -29.42	133 SHORT
KZAL LIC	MANSON WA	BLH-070201BRH	234C3 94.7	10.300 158.0	47-51-16 120-09-59	1.1	46.33 4.33	42 CLOSE
KZAL-FM1 LIC	WENATCHEE WA	BLFTB-070516ACL	234D 94.7	0.099 DA 0.0	47-22-51 120-17-15	232.4	10.39 0.00	0 BOOST
NEW-T APP	EAST WENATCHEE WA	BNPFT-030314BIE	286D 105.1	0.250 DA 175.0	47-27-44 120-21-28	281.5	13.80 0.00	0 TRANS
NEW-T APP	MANSON WA	BNPFT-030317ECU	286D 105.1	0.099 DA 240.0	47-51-42 120-02-20	12.4	48.28 0.00	0 TRANS
NEW-T APP	MANSON WA	BNPFT-030317CDH	286D 105.1	0.007 478.0	47-51-15 120-10-04	1.0	46.30 0.00	0 TRANS

44444 END OF FM SPACING STUDY FOR CHANNEL 232 44444



New 232D Chelan
BNPFT-20030314AVS
60 dBu F(50,50)

CHELAN

Sunnyslope 232D
40 dBu F(50,10)

DOUGLAS

K232AN 232D Ephrata
60 dBu F(50,50)

GRANT

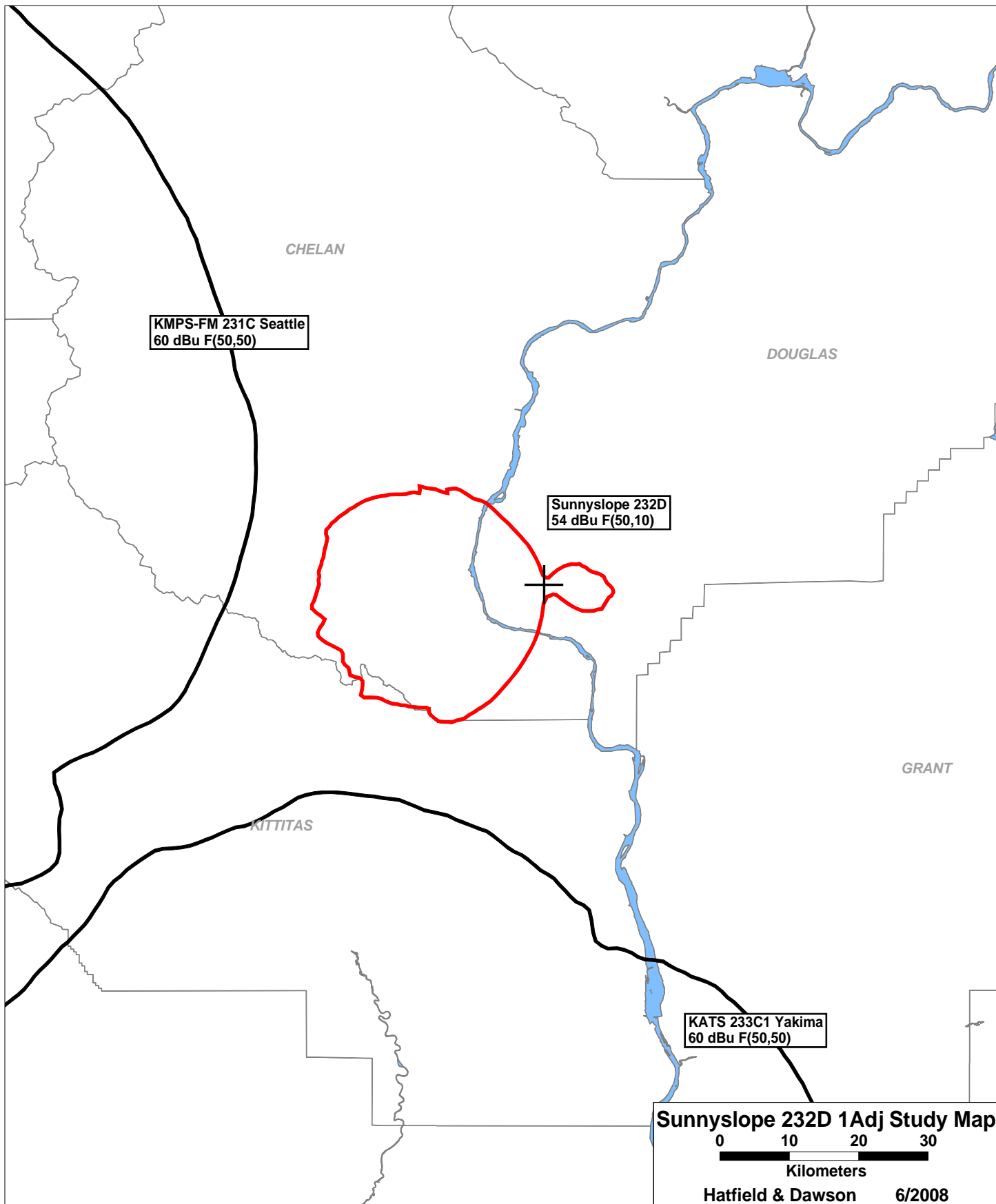
KITTITAS

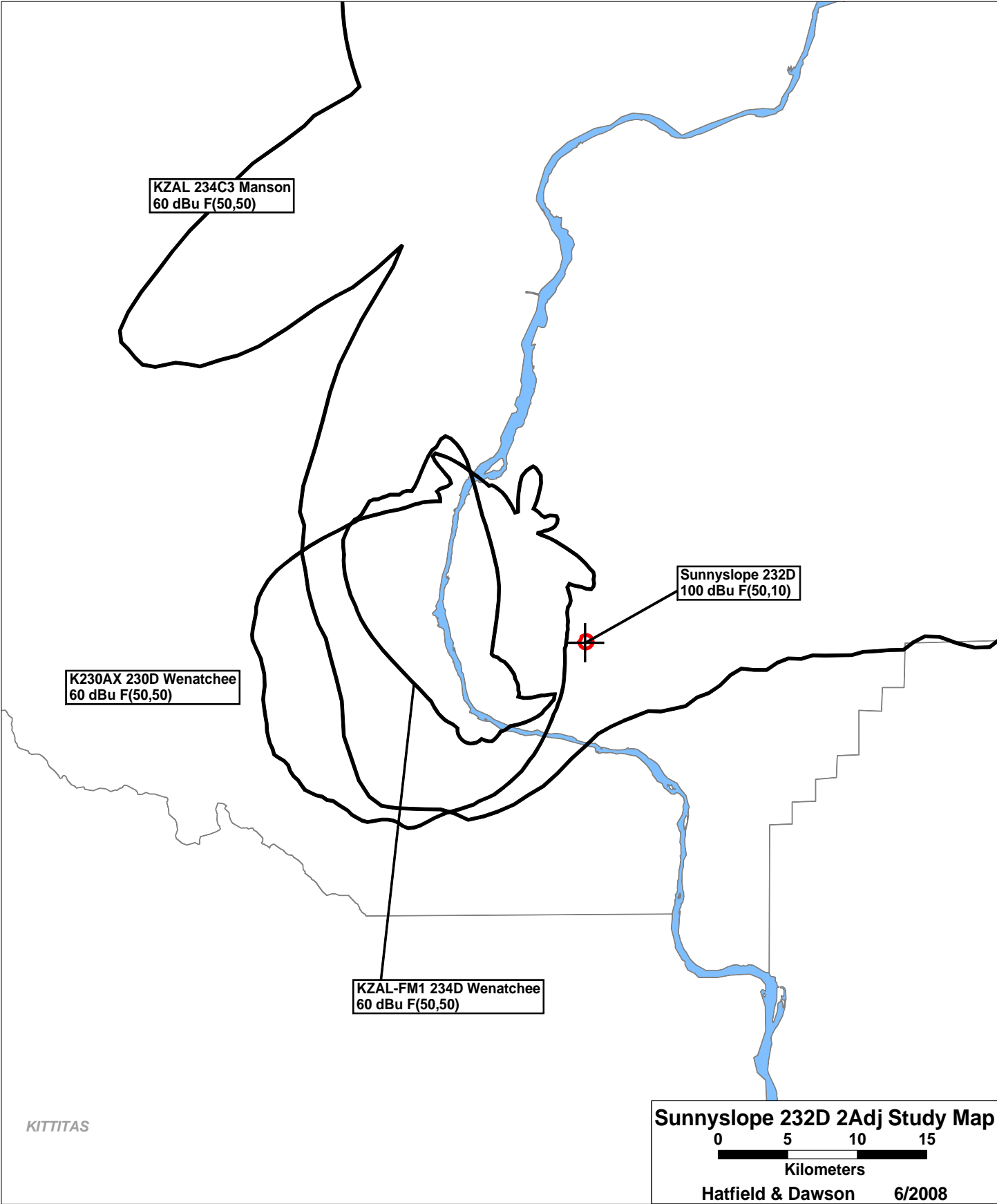
K232CV 232D Ellensburg
60 dBu F(50,50)

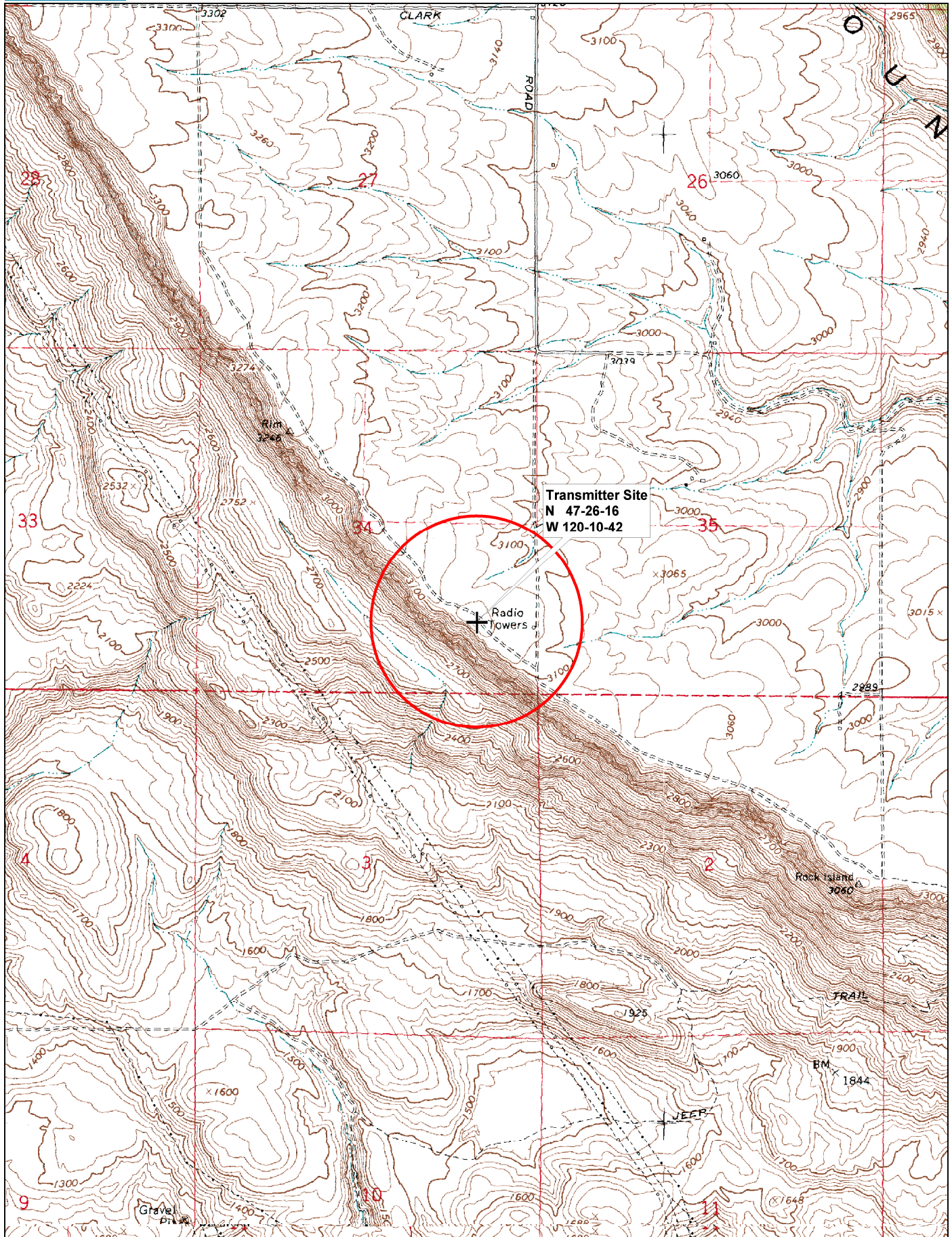
Sunnyslope 232D Cochannel Study Map

0 10 20 30
Kilometers

Hatfield & Dawson 6/2008







**June 2008
New FM Translator
Sunnyslope, Washington Channel 232D
NIER Study**

Facilities Proposed

The proposed operation will be on Channel 232D (94.3 MHz) with an effective radiated power of 15 Watts. Operation is proposed with an antenna to be mounted on an existing tower on Badger Mountain. The FCC Antenna Structure Registration Number for this tower is 1257329.

NIER Calculations

Section 1.1307(b)(1) of the Commission's Rules exempts FM translators and boosters operating with an effective radiated power of 100 Watts or less from the requirement to submit an Environmental Assessment to determine compliance with FCC specified guidelines for human exposure to radiofrequency radiation. The applicant proposes operation with a maximum lobe effective radiated power of 50 Watts and therefore no calculations have been submitted. Nonetheless, public access to the site is restricted and all station personnel and contractors are required to follow appropriate safety procedures, including turning off the transmitter if necessary, prior to commencing work on the antenna tower.