

Exhibit 12  
Hastings, NE

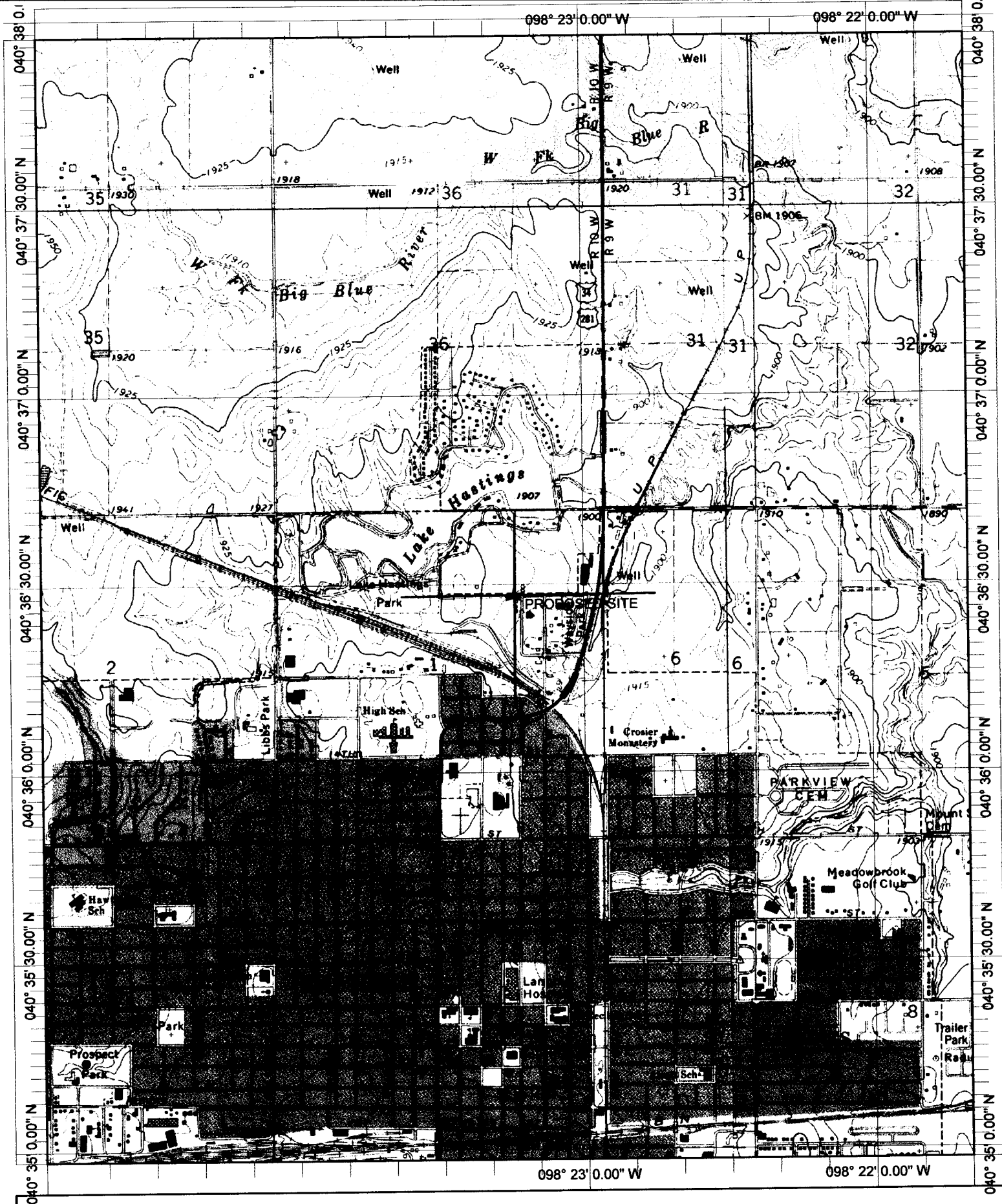
REFERENCE  
40 36 28 N  
98 23 14 W

CH# 229D - 93.7 MHz, Pwr= 0.25 kw, HAAT=41.5 M, COR= 611 M  
Average Protected F(50-50)= 8.34 km  
Ave. F(50-10) 40 dBu= 27.8 54 dBu= 11.8 80 dBu= 2.7 100 dBu= 1.1

DISPLAY DATES  
DATA 08-16-03  
SEARCH 08-27-03

CH CITY	CALL	TYPE STATE	AZI. <--	DIST FILE #	LAT. LNG.	Pwr(kw) HAAT(M)	COR(M) INT(km)	PRO(km) LICENSEE	*IN* (Overlap in km)	*OUT* (in km)
229D Hastings	AP229	APP NE	C 203.9 23.9	3.65 BNPFT20030314BAO	40 34 40 98 24 17	0.250 44	630 23.8	8.6 Educational Media Foundati	-32.01*	-28.71*
282D Grand Island	AP282	APP NE	C 6.0 186.0	35.70 BNPFT20030312AXZ	40 55 39 98 20 34	0.250 54	621 7.1	9.6 Community Broadcasting, In	3.2R	32.5M
228C1 Columbus	KKOT	LIC NE	CN 29.5 209.5	119.52 BLH19910822KC	41 32 28 97 40 45	100.000 306	808 10.1	72.8 Three Eagles Of Columbus,	6.80	36.55
226C1 Lexington	KRVNFM	LIC NE	CN 275.3 95.3	118.89 BLH19840123AN	40 41 50 99 47 17	100.000 146	865 1.1	57.9 Nebraska Rural Radio Assoc	104.81	59.87
229A Firth	ALLO	VAC NE		89.4 144.02 269.4 RM10262	40 36 32 96 41 08	6.000 -409	0 27.8	15.8	67.36	100.46
229C1 Salina	KYEZ	LIC KS	CN 159.8 339.8	195.38 BLH6686	38 57 14 97 36 29	100.000 153	538 26.5	58.8 Ebc Inc.	32.10	110.03
231C2 Downs	KDNS	LIC KS	CN 177.1 357.1	122.26 BLH19940428KS	39 30 29 98 18 57	28.000 90	548 1.1	38.3 Hoefflicker Broadcasting Co	110.57	82.84

\*\*\*Affixed to 'IN' or 'Out' values = site inside protected contour.  
ERP and HAAT are on direct line to and from reference station.



Name: HASTINGS WEST  
 Date: 8/27/2003  
 Scale: 1 inch equals 2000 feet

Location: 040° 36' 27.8" N 098° 23' 16.4" W  
 Caption: Exhibit 12  
 Site 40-36-28 / 98-23-14