

Exhibit 22

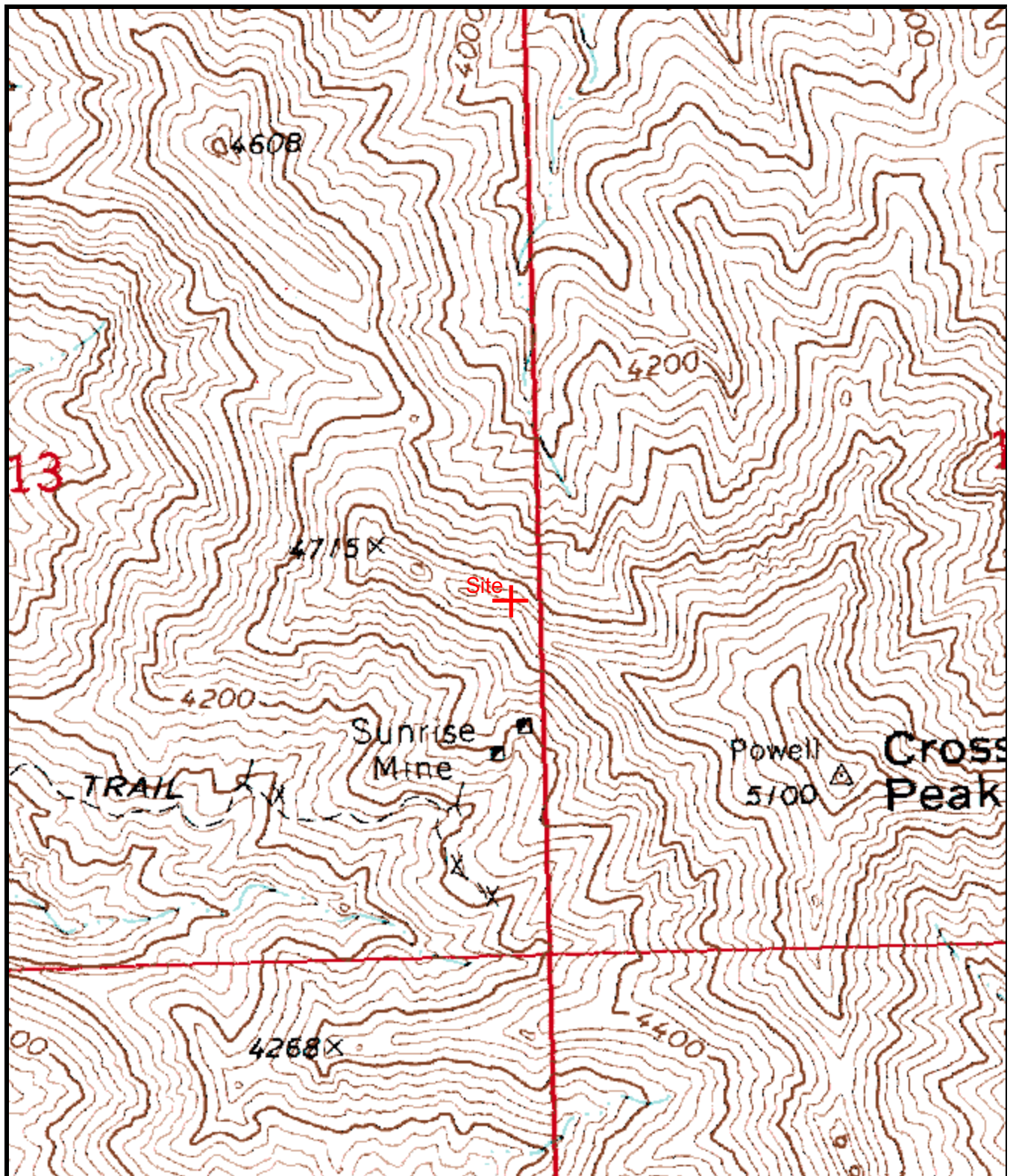
New Life Christian School

RF Compliance

Lake Havasu City, Arizona

The applicant proposes securing the site with a fence to ensure compliance with FCC OET Guidelines for human exposure to radiofrequency electromagnetic fields. RF Worksheet #1 was used to determine the maximum distance for fencing. The site is located in an isolated area, accessible only by a dirt road. A fence, 36 meters from the tower, will be constructed to surround the area of RF exposure. This represents a worst-case calculation and may be refined upon actual field measurements. Exhibit 22 Figures 1 and 2 show a topographic map and an aerial photograph, at 1:24000 scale, to show a lack of population within the area of the Site.

Exhibit 22 Figure 1

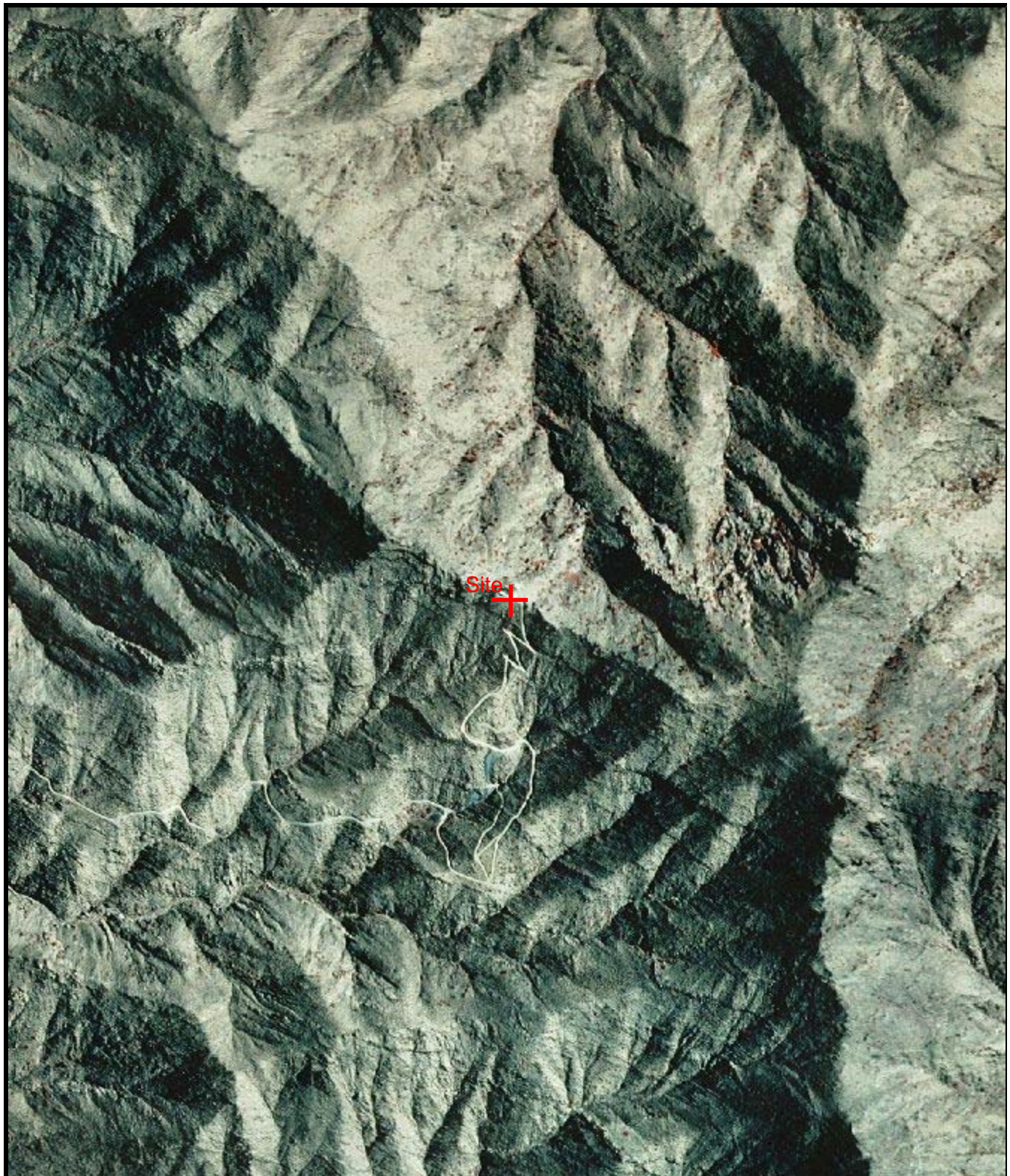


0 0.1 0.2 0.3 0.4 0.5 km
0 0.09 0.18 0.27 0.36 0.45 mi

Map center is 34° 33' 06"N, 114° 11' 37"W (NAD27)
Crossman Peak quadrangle - Elevation 4,660.0 ft / 1,420.0 m (USGS NED)
Projection is UTM Zone 11 NAD83 Datum

* M
G
M=12.743
G=1.592

Exhibit 22 Figure 2



0 0.1 0.2 0.3 0.4 0.5 km
0 0.09 0.18 0.27 0.36 0.45 mi

Map center is 34° 33' 06"N, 114° 11' 37"W (NAD27)
Crossman Peak quadrangle - Elevation 4,660.0 ft / 1,420.0 m (USGS NED)
Projection is UTM Zone 11 NAD83 Datum

* M
G
M=12.743
G=1.592