

## CERTIFICATION

### WRTI / PHILADELPHIA


This is a certification that Metz Engineers performed a field survey on September 17, 2010 in Philadelphia County, PA. The survey was performed for Temple University Public Radio, WRTI/Philadelphia, PA.

Radio Tower is located at 310 Domino Lane, Philadelphia, PA 19128.

The survey consisted of a Differential Global Positioning (DGPS) to determine true north. Upon completion of our base line azimuth determination, we checked the alignment of the newly installed WRTI antenna system. The orientation as shown on Electronics Research Inc. Plan entitled; Surveyor Orientation (Additional Information) WRTI / Philadelphia, PA., Drawing No. IA25459A-2, dated August 12, 2010. As shown the antenna was confirmed to be aligned properly at 277° degrees from true north.

Several field and office checks were performed to verify instrument position and azimuth direction. All checks that were made verified the fieldwork was correct. Therefore, Metz Engineers certifies that the WRTI antenna is aligned in accordance with the manufactures drawing.



  
Kenneth M. Fretz, Sr., P.L.S.

Date 9/20/10

4

3

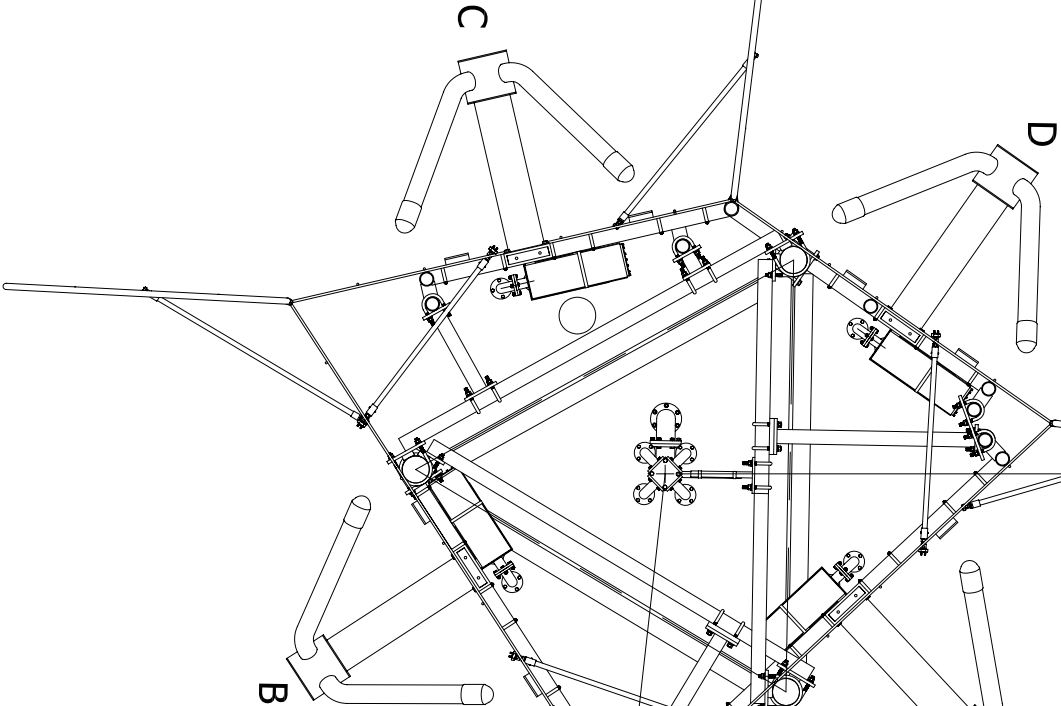
2

1

0°  
TRUE  
NORTH

N 277° E  
(S 97° W)  
SURVEYOR ORIENTATION

N 96° E  
SURVEYOR ORIENTATION



This document/drawing contains information considered confidential by Electronics Research, Inc. ("ERI"). This information is disclosed on a confidential basis and only authorized for use in the installation, operation, and maintenance of ERI tower and antenna equipment, as appropriate. Reproduction, transmission, disclosure of ERI's technology, trade secrets, confidential information, or other proprietary information without ERI's written consent is prohibited. UNAUTHORIZED DUPLICATION, REPRODUCTION, OR DISCLOSURE OF THIS INFORMATION IS A VIOLATION OF FEDERAL LAW.  
COPYRIGHT 2010 ERI, ELECTRONICS RESEARCH INC.

THIRD ANGLE PROJECTION




MATERIAL

FINISH

TOLERANCES

OVERALL-NOT CUMULATIVE  
UNLESS OTHERWISE SPECIFIED,  
ALL DIMENSIONS ARE IN INCHES  
AND APPLICABLE AT 20°C (68°F)  
INTERPRET DIMENSIONS AND TOLERANCES  
PER ASME Y14.5M-1994

1 PLACE DECIMAL ± .1  
2 PLACE DECIMAL ± .03  
3 PLACE DECIMAL ± .010  
ANGULAR ± .5°  
FRACTIONAL ± 1/16"

PROJECT NO.	25719/4		<div><div><div>Electronics Research Inc.</div><div>ESTABLISHED 1943</div></div><div>7777 GARDNER RD. CHANDLER, IN 47610-9219 PHONE: (812) 925-6000 FAX: (812) 925-4030</div></div>			
ERI APPROVAL	NAME	DATE				
DRAWN BY	S.DEOM	08/12/2010				
DRAFTING						
DESIGN MGR.						
ENG.			TITLE: SURVEYOR ORIENTATION (ADDITIONAL INFORMATION) WRIT / PHILADELPHIA, PA 1184-2CP-DA			
MANUF.						
EXT. APPROVAL						
COMPANY						
SUPERCEDES PART NO.						
SIZE	GAGE CODE	DWG NO.	SCALE: 1:32			
B	OZNS1	IA25459A-2				
WEIGHT:		SHEET:	1			
		REV.				