

Channel Study

REFERENCE		CH# 224D - 92.7 MHz, Pwr= 0.092 kW, HAAT= 101.9 M, COR= 668 M								DISPLAY DATES	
30 04 44.0 N.		Average Protected F(50-50)= 10.2 km								DATA 08-13-13	
99 07 59.0 W.		Omni-directional								SEARCH 08-13-13	
CH CITY	CALL	TYPE STATE	ANT	AZI. <--	DIST FILE #	LAT. LNG.	Pwr (kW) HAAT (M)	INT (km) COR (M)	PRO (km) LICENSEE	*IN* (Overlap in km)	*OUT*
224D Kerrville	1564861	APP TX	C	195.5 15.5	1.69 BNPFT20030314BTY	30 03 51.0 99 08 16.0	0.075	31.2 682	9.4 Educational Media Foundati	-41.5*	-48.0*
222C2 Kerrville	KRNH	LIC TX	NCX	105.6 285.7	7.10 BLH20070406AAQ	30 03 42.0 99 03 43.0	20.000 203	5.3 753	49.2 Radio Ranch, Ltd.	-9.3*	-42.7*
225C1 San Antonio	KROM	LIC TX	NCN	136.6 317.0	122.61 BLH19970530KA	29 16 29.0 98 15 52.0	45.000 412	106.2 570	72.1 Tichenor License Corporati	4.3	33.7
224C3 Mullin	1549770	APP TX	CX	19.1 199.4	162.53 BNPH20120523ABP	31 27 32.0 98 34 17.0	18.000 119	116.2 564	44.4 Crawford, Charles E	37.1	87.3
224C3 Mullin	AU9358046	VAC TX		15.1 195.3	170.26 RM10395	31 33 24.0 98 39 55.0	25.000 100	121.5 546	45.5 Mullin Broadcasters	39.4	93.3
224C3 Mullin	1496436	APP TX		15.1 195.3	170.26 BSFH20120104ACR	31 33 24.0 98 39 55.0	25.000 100	121.5 546	45.5 Crawford, Charles E	39.4	93.3
227C Cedar Park	KGSR	LIC TX	CX	56.4 237.0	131.14 BLH20020404AAD	30 43 34.0 97 59 23.0	100.000 587	13.1 928	89.8 Emmis Austin Radio Broadca	108.5	40.9
223C2 Devine	KRPT	LIC TX	C	176.3 356.4	128.49 BLH19981026KD	28 55 32.0 99 02 53.0	50.000 150	73.0 336	47.8 Cc Licenses, Llc	42.2	61.0
226A Leakey	KXQK	RSV-A TX		237.0 56.7	78.55	29 41 34.0 99 48 56.0	6.000 100	3.3 678	34.0 Radio Dalhart, Inc.	65.0	43.2
226A Leakey	KXQK	APP TX	NCX	237.0 56.7	78.55 BPH20130221AAO	29 41 34.0 99 48 56.0	1.900 181	2.6 760	32.0 Radio Dalhart, Inc.	65.7	45.5
Terrain database is NGDC 30 SEC, R= 73.215 qualifying spacings or FCC minimum spacings in KM, M= Margin in KM In & Out distances between contours are shown at closest points. Reference Zone= West Zone, Co to 3rd adjacent. All separation margins (if shown) include rounding Ant Column: (D= DA Standard, Z= DA 73.215, N= Not DA 73.215, _= Omni), Polarization (C,H,V,E), Beamtilt(Y,N,X) "-"affixed to 'IN' or 'OUT' values = site inside protected contour.											

Compliance with C.F.R. 74.1204

The proposed FM Translator is located within the protected 60 dBu contour of second adjacent channel station KRNH, channel 222C2, Kerrville, Texas. According to 74.1204(a)(3), in order to protect second and third adjacent facilities, the difference in dBu between the two facilities must not exceed 40dBu.

The proposed ERP for NEW:	92 watts
The proposed COR for NEW:	84 meters
KRNH F(50/50) contour at proposed site:	95.4 dBu
The F(50/10) contour of proposed NEW	135.4 dBu

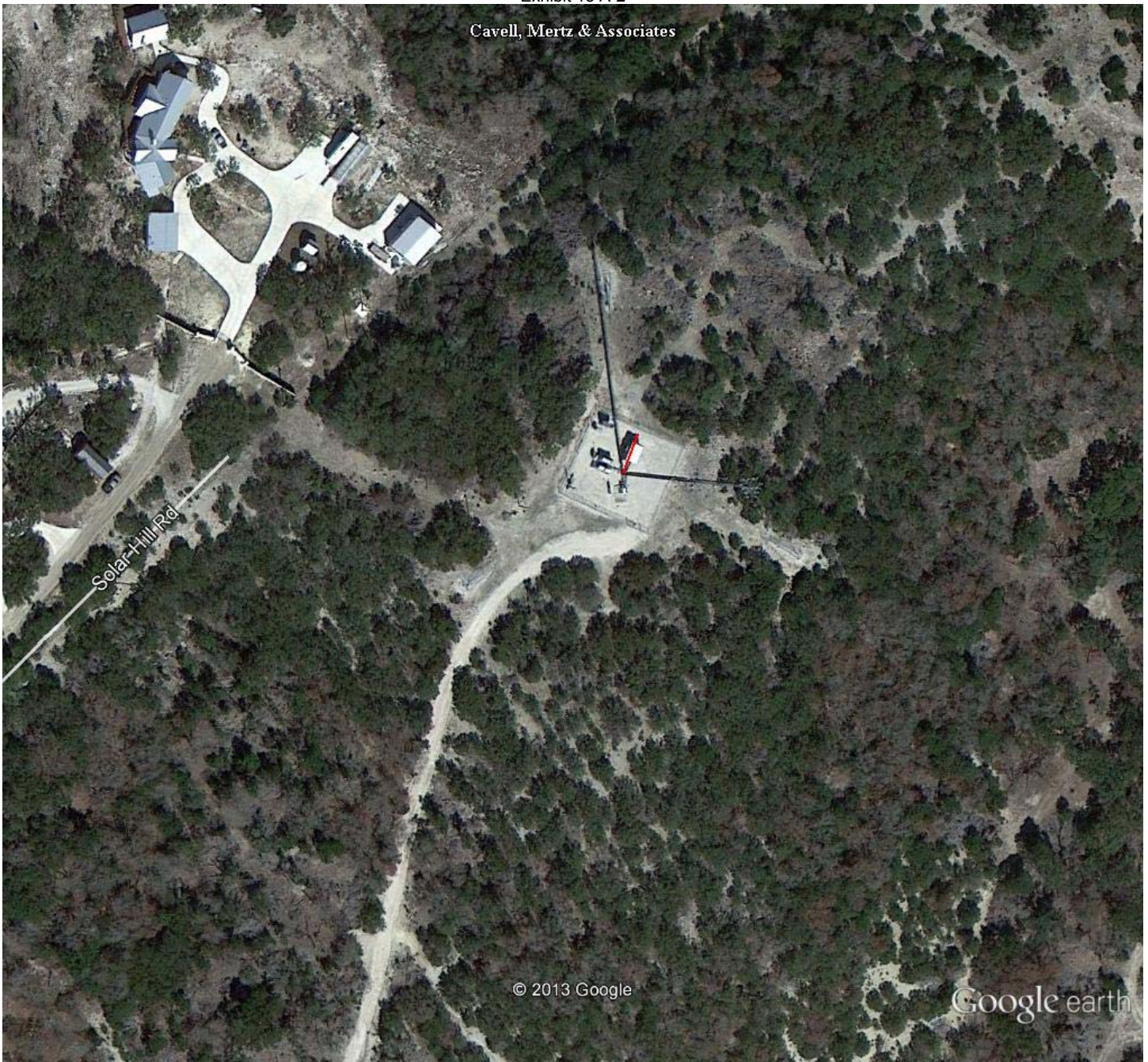
By taking into account the vertical elevation pattern for the Jampro JLCP antenna, it has been determined that the predicted interfering contour will not actually reach the ground (see Exhibit 13 A-1). The maximum distance to the interference contour is 11.4 meters. Please see Exhibit 13 A-2 for an aerial photo of the area that shows there are no regularly occupied structures in the predicted interference area.

Therefore, EMF respectfully requests a waiver of C.F.R. 74.1204 based on no population within the area of predicted interference.

EXHIBIT 13 - A1
74.1204(d) Showing
NEW
KERRVILLE, TX

ERP (kw): 0.092
Height of Antenna above Ground (m): 84
Translator's IX Contour: 135.4
Antenna Type: JLCP-1

<u>Depression Angle from Horizon</u>	<u>Antenna Relative Field</u>	<u>ERP (kw) from the Antenna RF</u>	<u>Dist. To IX Contour (m)</u>	<u>Height IX Contour Above Ground (m)</u>
0	1.000	0.0920	11.4260	84.000
5	0.994	0.0909	11.3574	83.010
10	0.975	0.0875	11.1403	82.065
15	0.940	0.0813	10.7404	81.220
20	0.910	0.0762	10.3977	80.444
25	0.880	0.0712	10.0549	79.751
30	0.840	0.0649	9.5978	79.201
35	0.770	0.0545	8.7980	78.954
40	0.710	0.0464	8.1125	78.785
45	0.650	0.0389	7.4269	78.748
50	0.600	0.0331	6.8556	78.748
55	0.520	0.0249	5.9415	79.133
60	0.450	0.0186	5.1417	79.547
65	0.380	0.0133	4.3419	80.065
70	0.320	0.0094	3.6563	80.564
75	0.250	0.0058	2.8565	81.241
80	0.180	0.0030	2.0567	81.975
85	0.140	0.0018	1.5996	82.406
90	0.010	0.0000	0.1143	83.886



Google earth

feet
meters



NAD27 COORDINATES

30 04 44 N

099 07 59 W

THE RED LINE MEASURES 11.4M FROM THE BASE OF THE
TOWER.