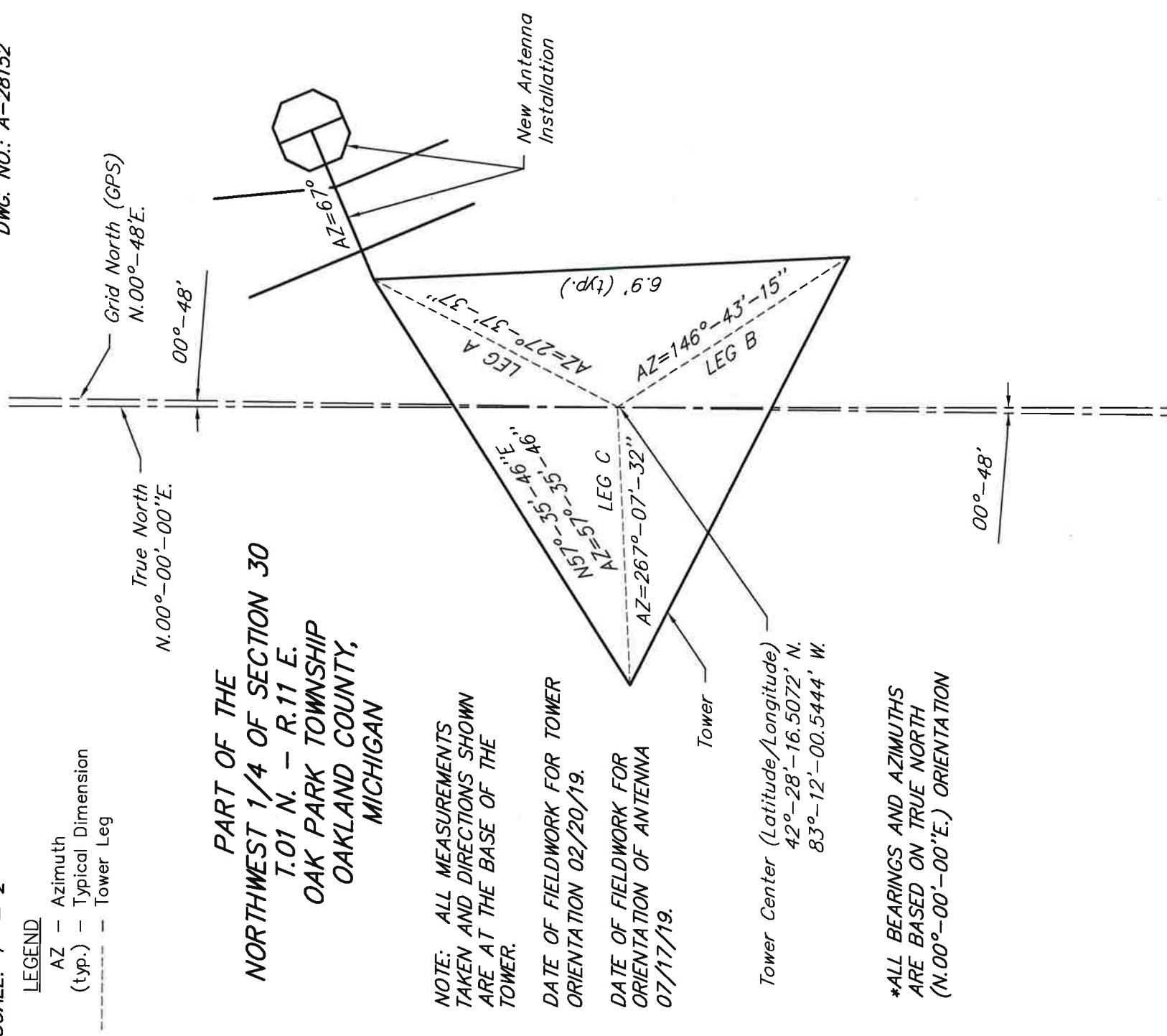


SCALE: 1" = 2'

LEGEND

AZ – Azimuth
(typ.) – Typical Dimension
--- Tower Leg

DWG. NO.: A-28152



ANTENNA CERTIFICATION FOR: Klove Air 1
5700 West Oaks Blvd.
Rocklin, CA. 95765

DATE: February 20, 2019

ANTENNA CERTIFICATION OF: WDKL Tower
Oak Park Township, Michigan



I hereby certify to the antenna direction and tower orientation as shown hereon:

By: Roger P. Mahoney
Roger P. Mahoney
Professional Surveyor No. 4111

Date: 6/1-22-19

REVISED 03/04/19
REVISED 07/22/19

DRAWN BY: JDT
CHECKED BY: RPM

PLOT DATE: 02/26/19
SHEET 1 OF 1

JOB#: 126736SG2019
DWG#: A-28152